

FIGURE 1
LED LCD TV (M/N: LC-50N8002U)
COVER REMOVED



FIGURE 2
LED LCD TV (M/N: LC-50N8002U)
LCD PANEL LABEL



FIGURE 3
LED LCD TV (M/N: LC-50N8002U)
MAIN BOARD (COMPONENT SIDE)



FIGURE 4
LED LCD TV (M/N: LC-50N8002U)
MAIN BOARD (SOLDERED SIDE)

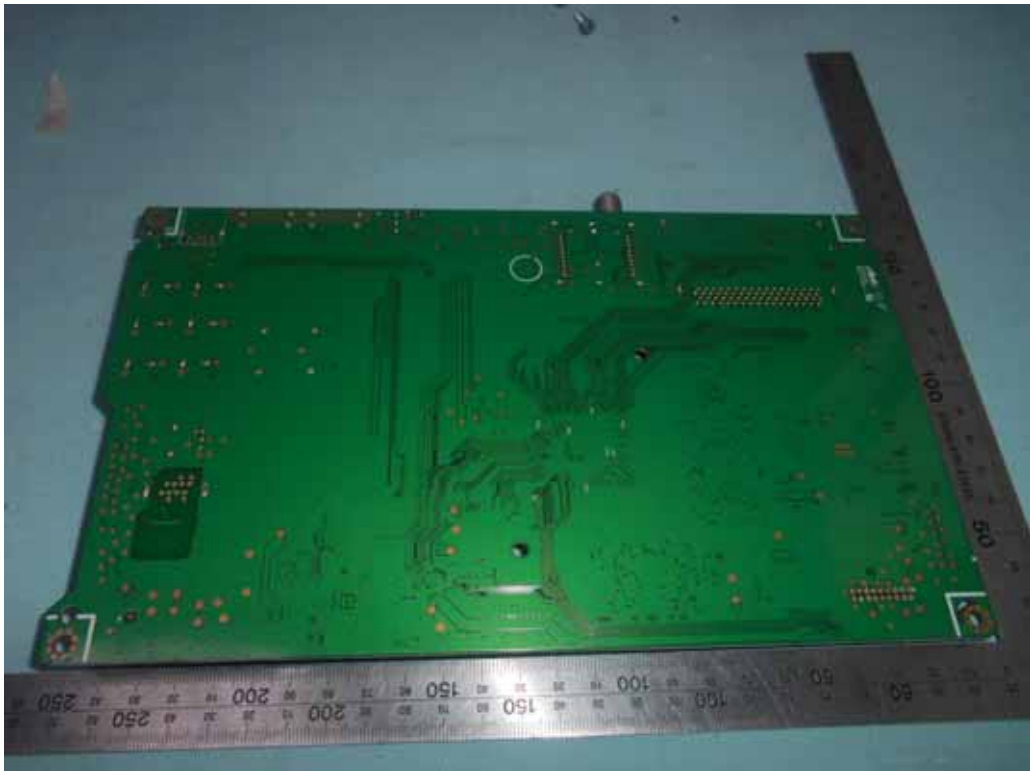


FIGURE 5
LED LCD TV (M/N: LC-50N8002U)
CHIP & CRYSTAL ON MAIN BOARD



FIGURE 6
LED LCD TV (M/N: LC-50N8002U)
TUNER



FIGURE 7
LED LCD TV (M/N: LC-50N8002U)
PANEL BOARD (COMPONENT SIDE)



FIGURE 8
LED LCD TV (M/N: LC-50N8002U)
PANEL BOARD (SOLDERED SIDE)



FIGURE 9
LED LCD TV (M/N: LC-50N8002U)
CHIP & CRYSTAL ON PANEL BOARD



FIGURE 10
LED LCD TV (M/N: LC-50N8002U)
RF BOARD (COMPONENT SIDE)



FIGURE 11
LED LCD TV (M/N: LC-50N8002U)
RF BOARD (SOLDERED SIDE)

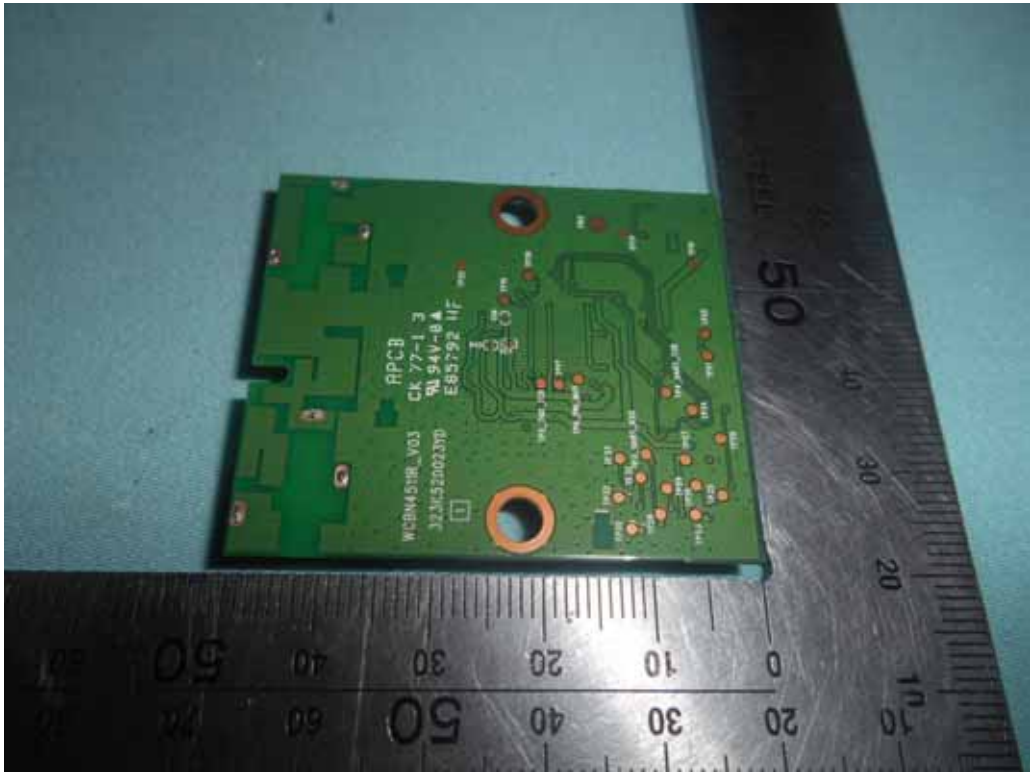


FIGURE 12
LED LCD TV (M/N: LC-50N8002U)
RF LABEL



FIGURE 13
LED LCD TV (M/N: LC-50N8002U)
POWER BOARD (COMPONENT SIDE)

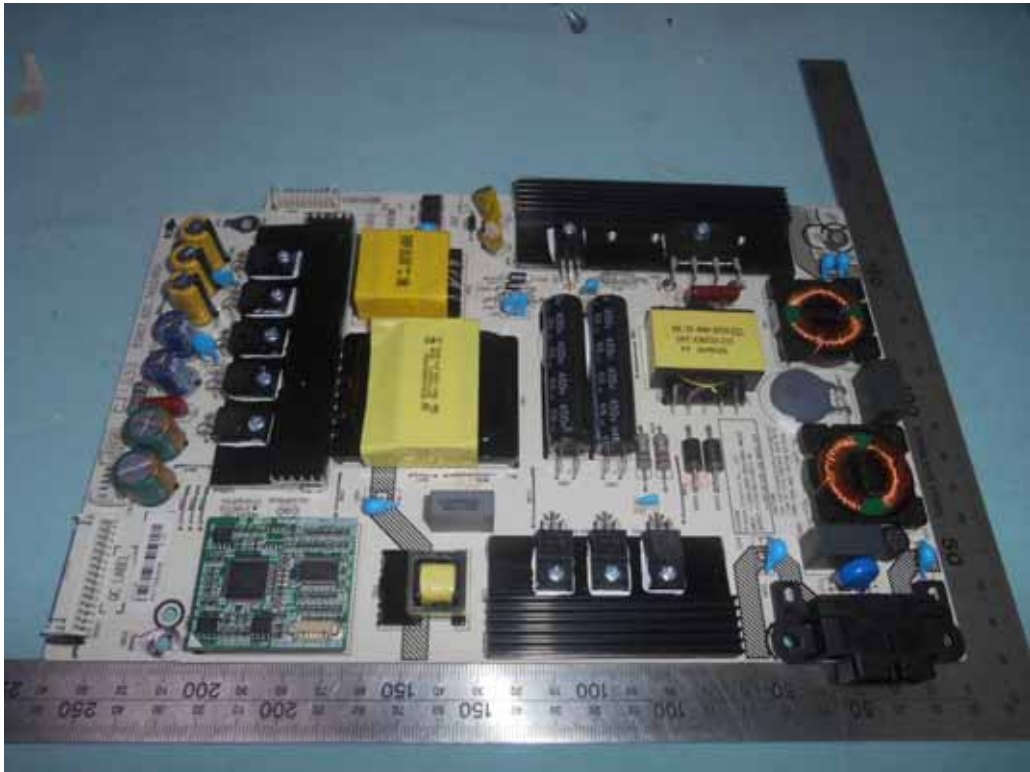


FIGURE 14
LED LCD TV (M/N: LC-50N8002U)
POWER BOARD (SOLDERED SIDE)

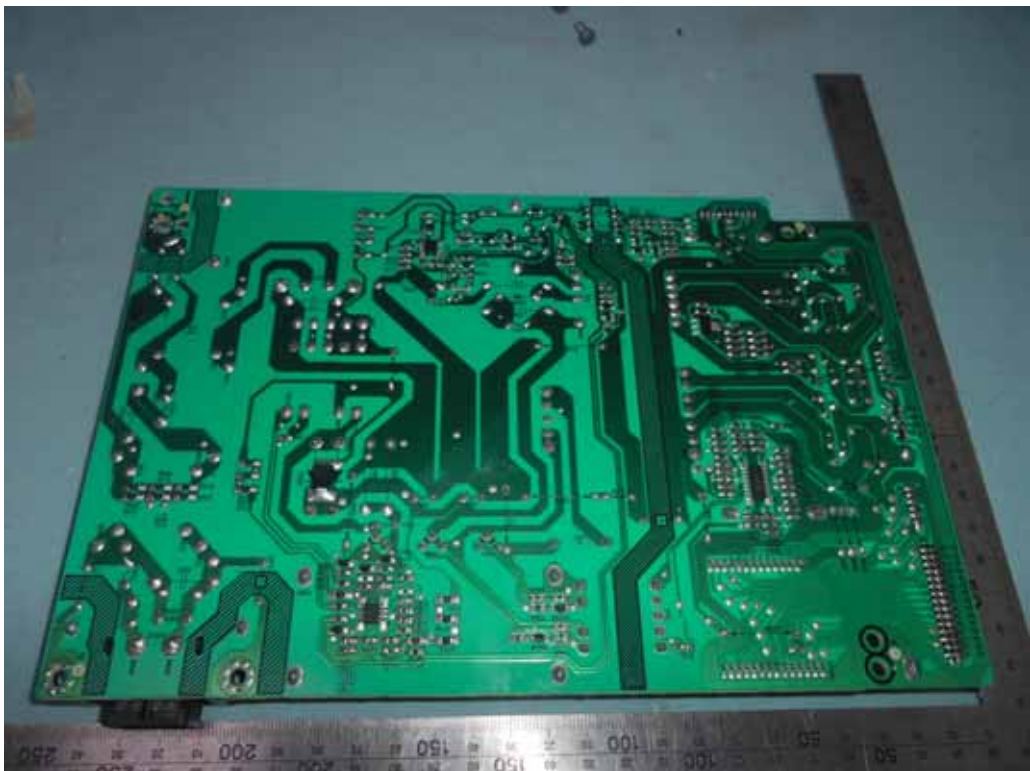


FIGURE 15
LED LCD TV (M/N: 50H8C)
AC BOARD (COMPONENT SIDE)

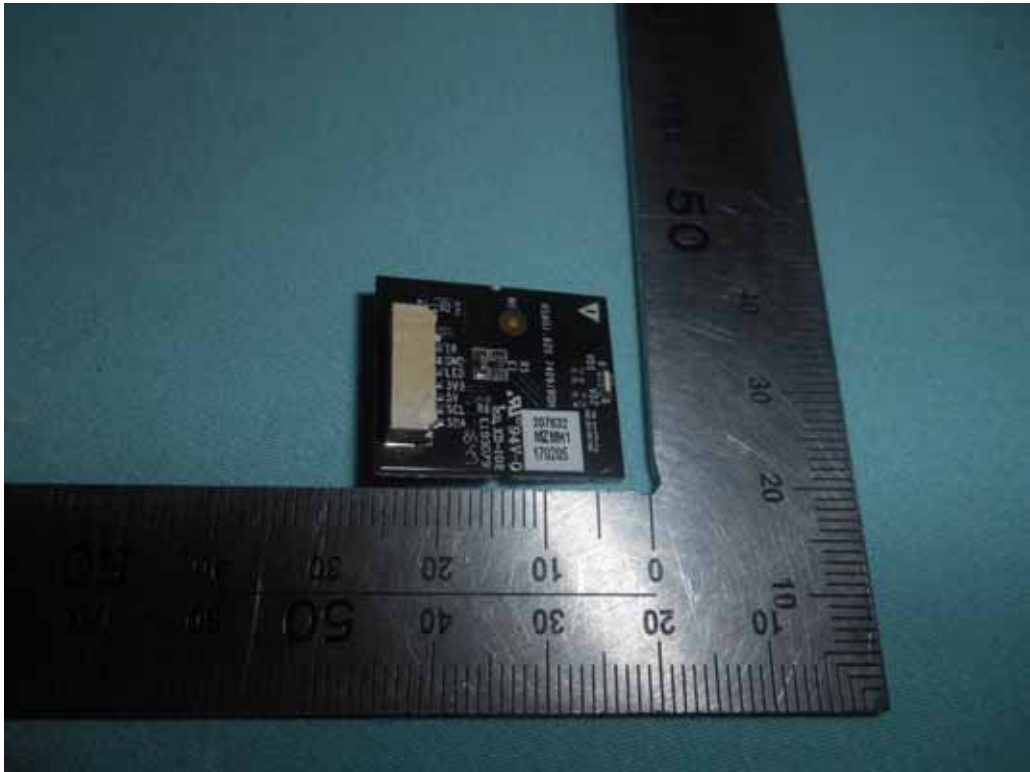


FIGURE 16
LED LCD TV (M/N: LC-50N8002U)
AC BOARD (SOLDERED SIDE)

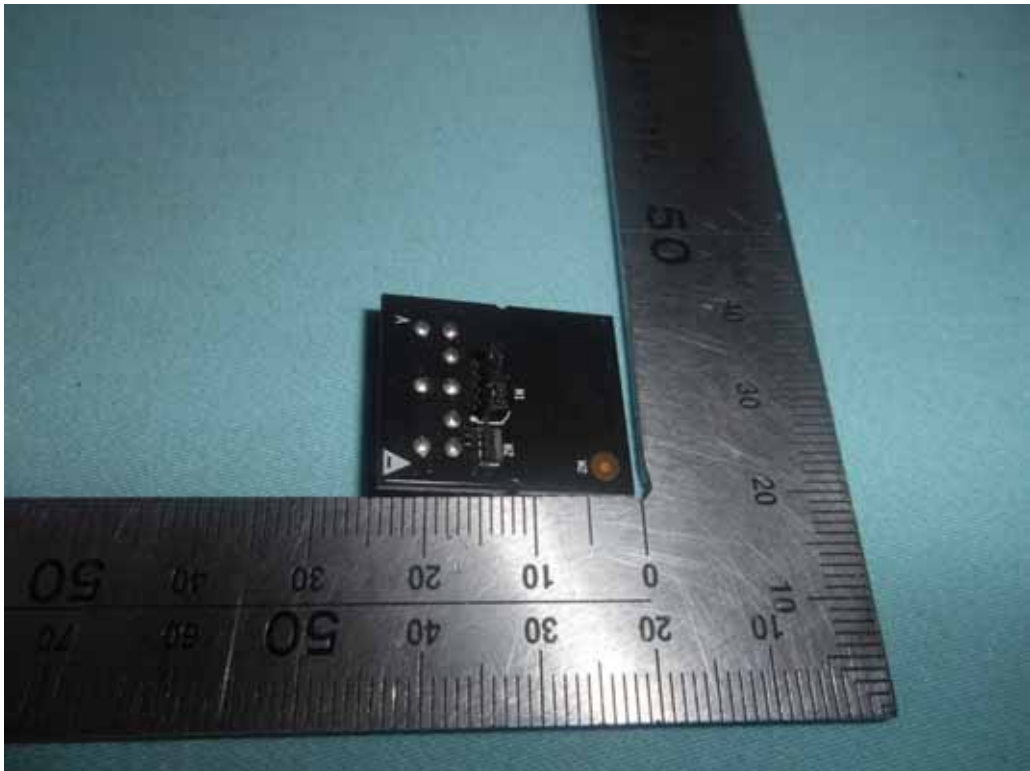


FIGURE 17
LED LCD TV (M/N: LC-50N8002U)
KEY BOARD (COMPONENT SIDE)

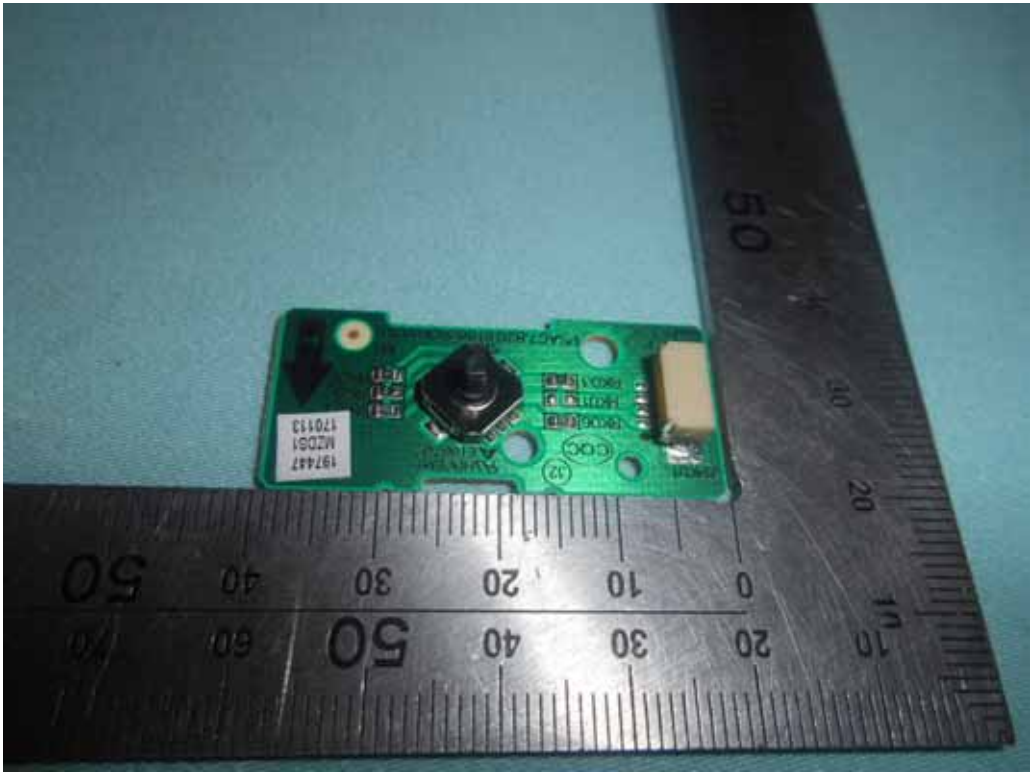


FIGURE 18
LED LCD TV (M/N: LC-50N8002U)
KEY BOARD (SOLDERED SIDE)

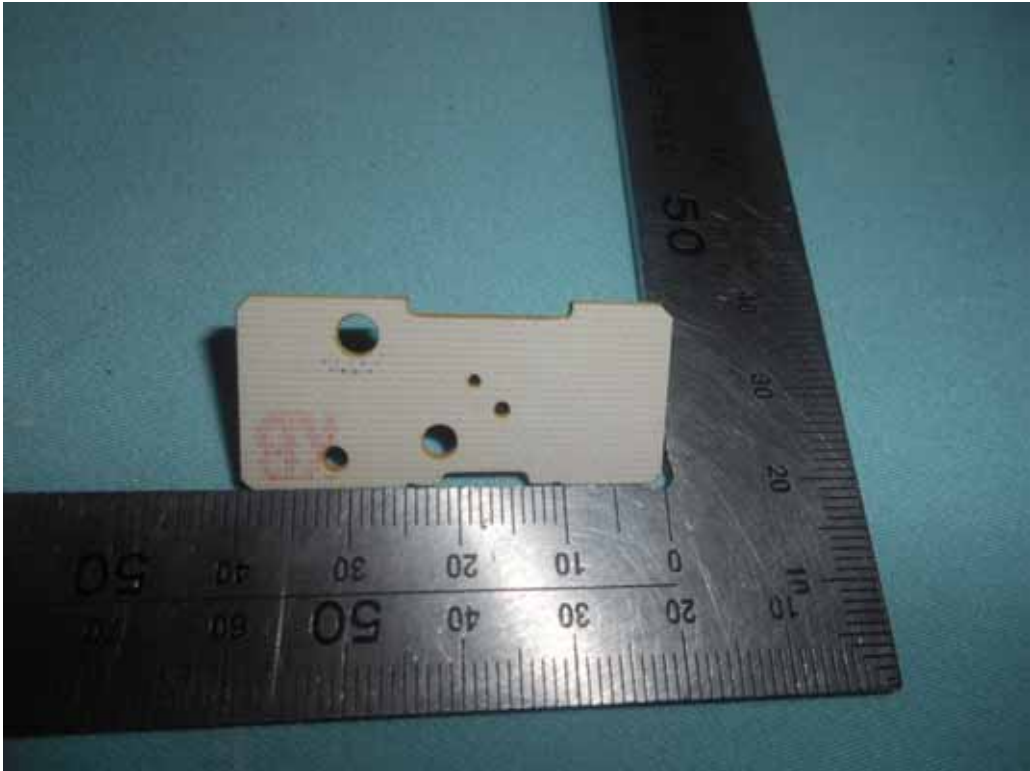


FIGURE 19
LED LCD TV (M/N: LC-50N8002U)
DEBUG

