

FIGURE 1
LED LCD TV (M/N: 65H9707)
COVER REMOVED



FIGURE 2
LED LCD TV (M/N: 65H9707)
LCD PANEL LABEL



FIGURE 3
LED LCD TV (M/N: 65H9707)
POWER BOARD (COMPONENT SIDE)

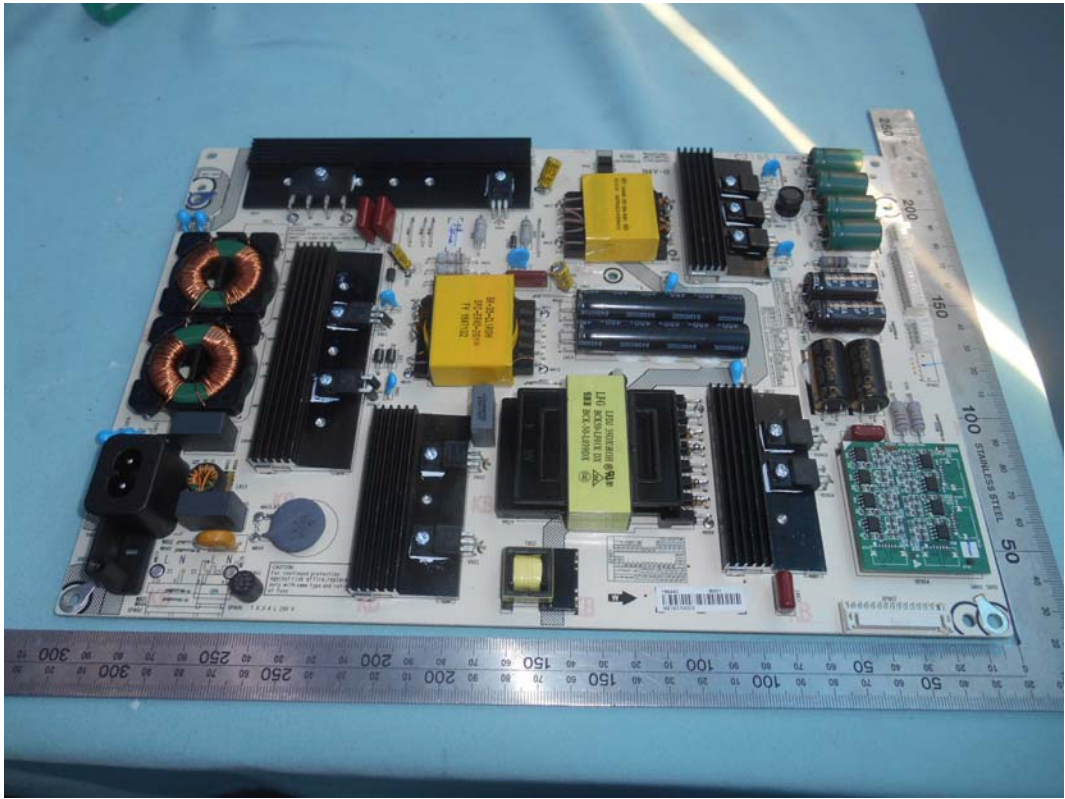


FIGURE 4
LED LCD TV (M/N: 65H9707)
POWER BOARD (SOLDERED SIDE)

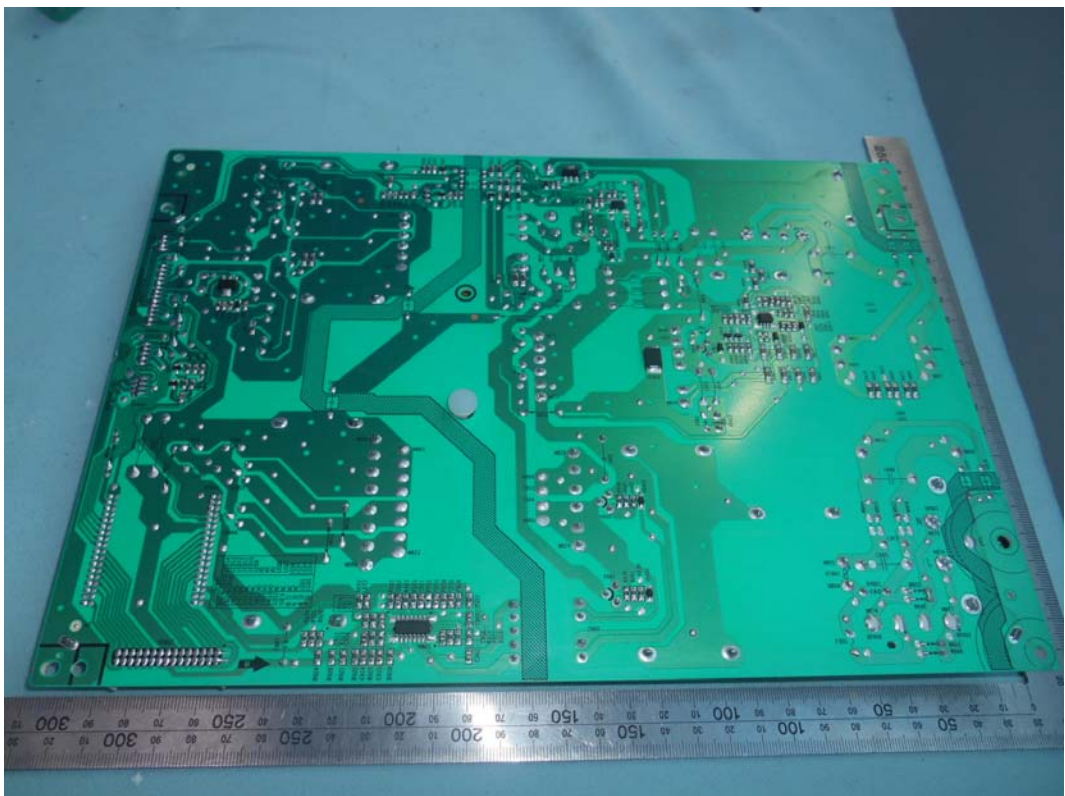


FIGURE 5
LED LCD TV (M/N: 65H9707)
IR BOARD (COMPONENT SIDE)

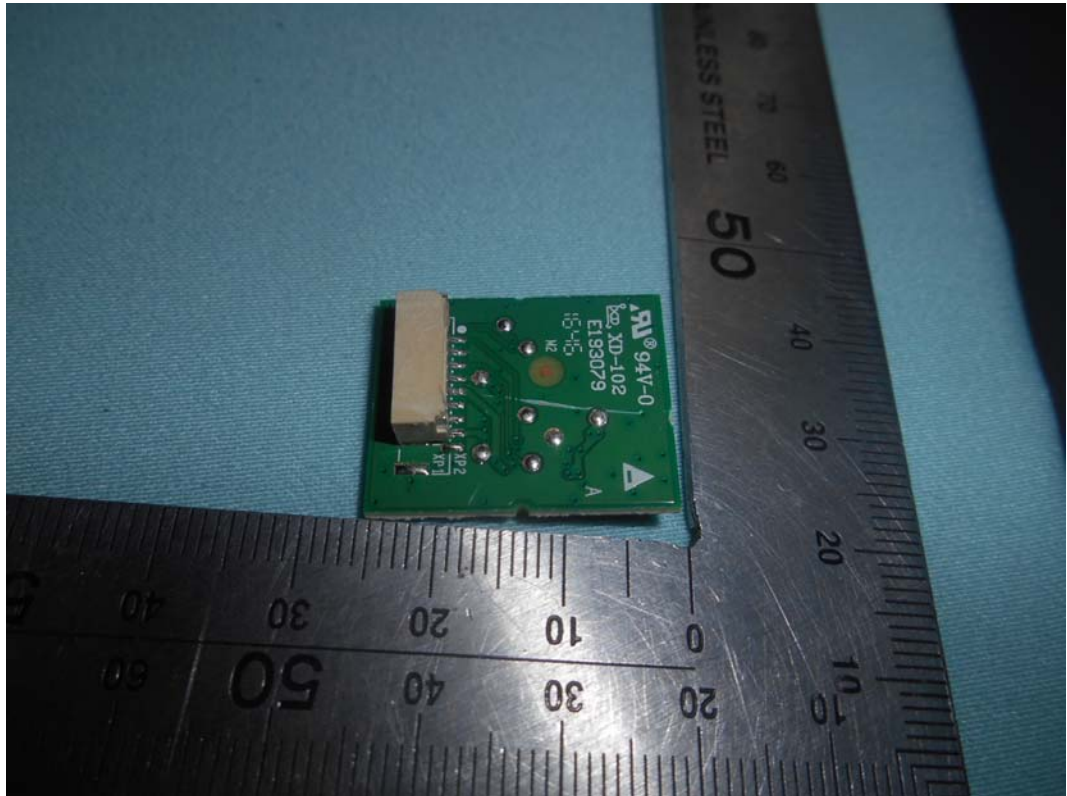
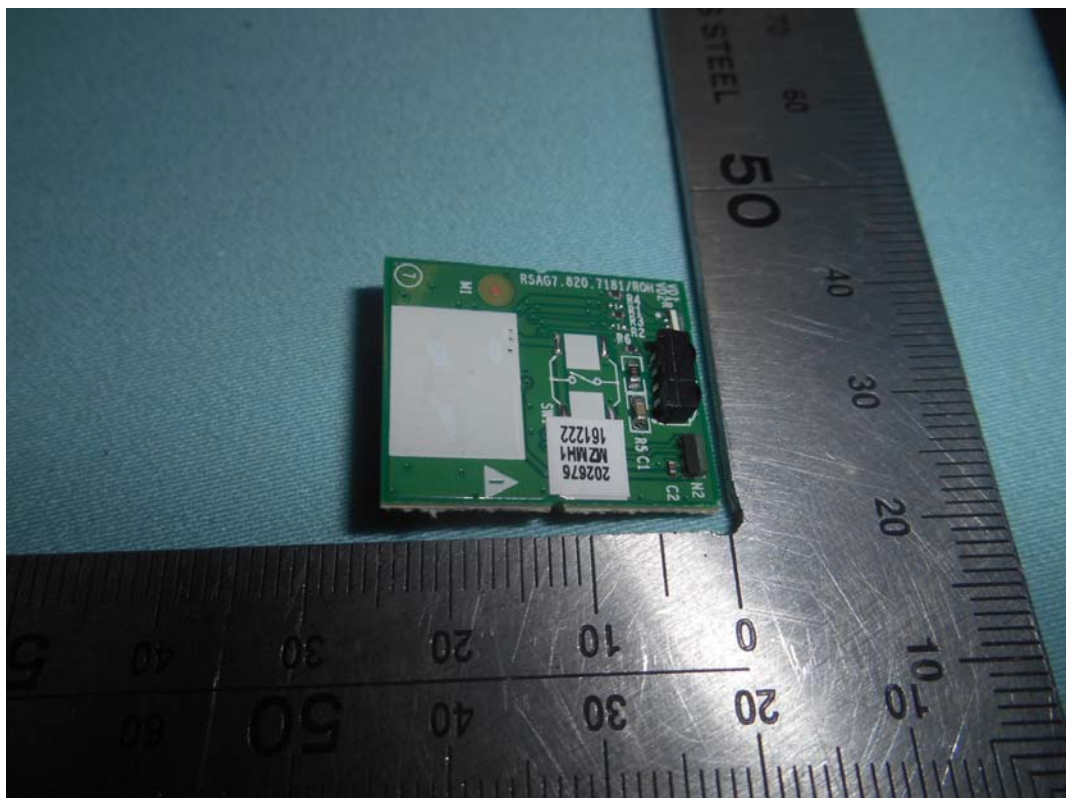


FIGURE 6
LED LCD TV (M/N: 65H9707)
IR BOARD (SOLDERED SIDE)



*FIGURE 7
LED LCD TV (M/N: 65H9707)
MAIN BOARD (COMPONENT SIDE)*



*FIGURE 8
LED LCD TV (M/N: 65H9707)
MAIN BOARD (SOLDERED SIDE)*

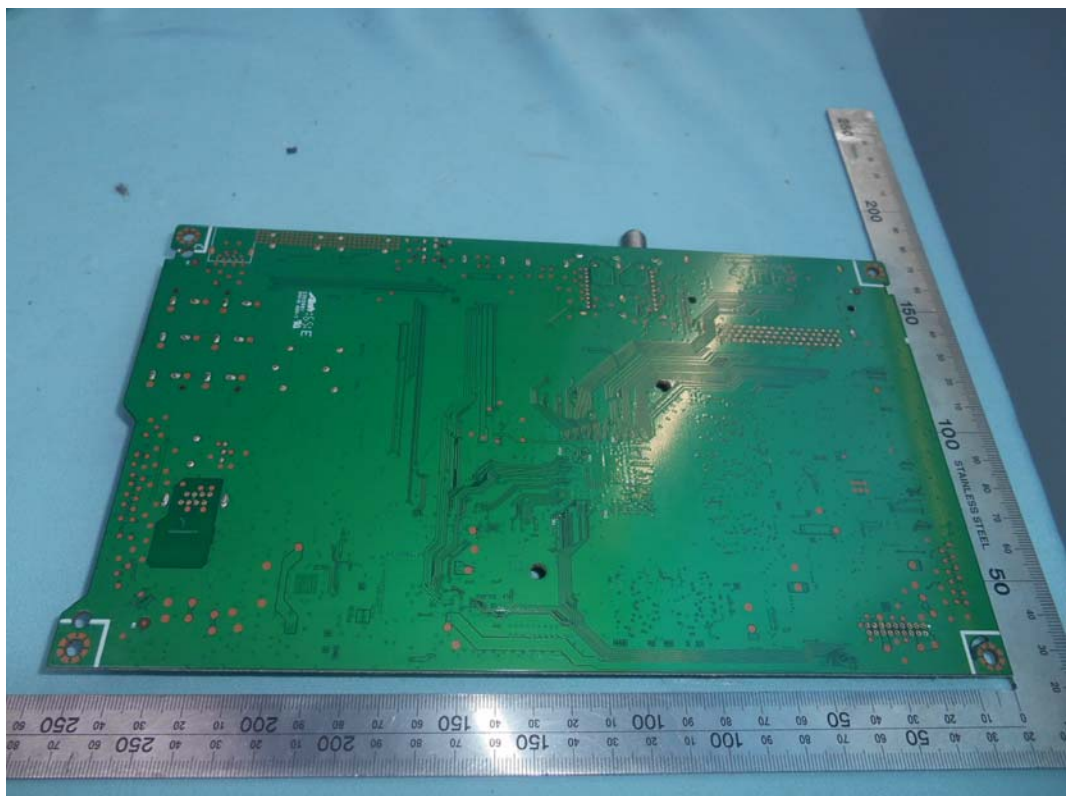


FIGURE 9
LED LCD TV (M/N: 65H9707)
CHIP AND CRYSTAL ON MAIN BOARD



FIGURE 10
LED LCD TV (M/N: 65H9707)
TUNER

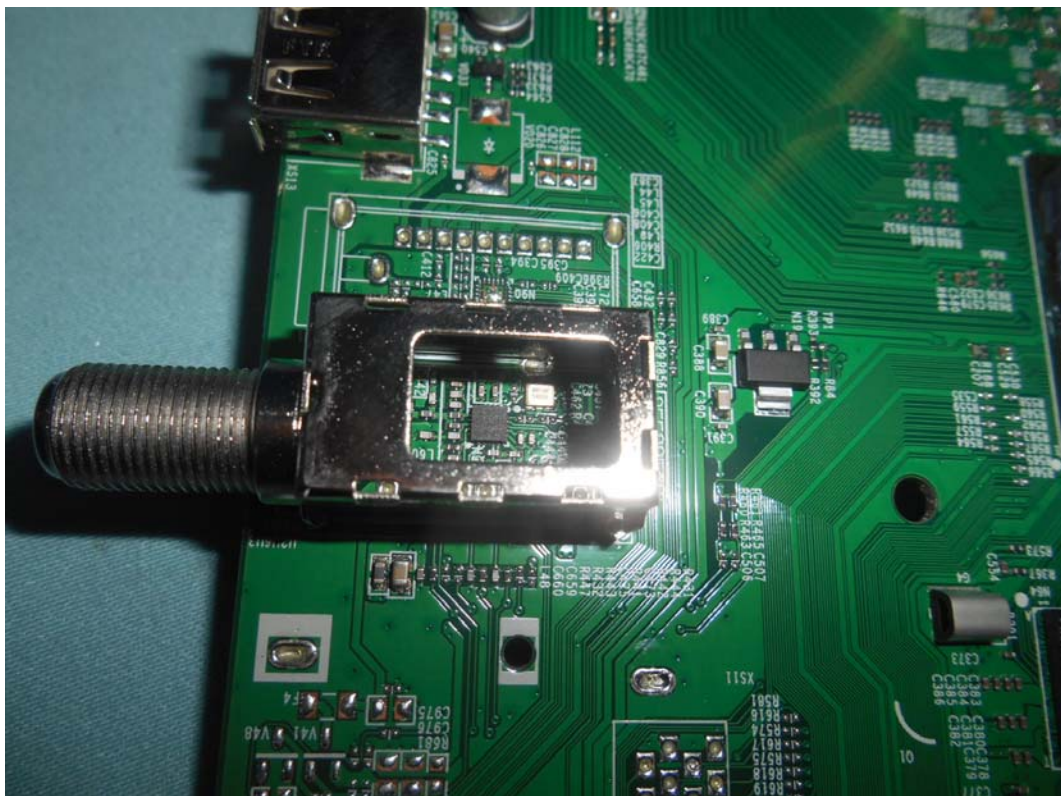


FIGURE 11
LED LCD TV (M/N: 65H9707)
KEY BOARD (COMPONENT SIDE)

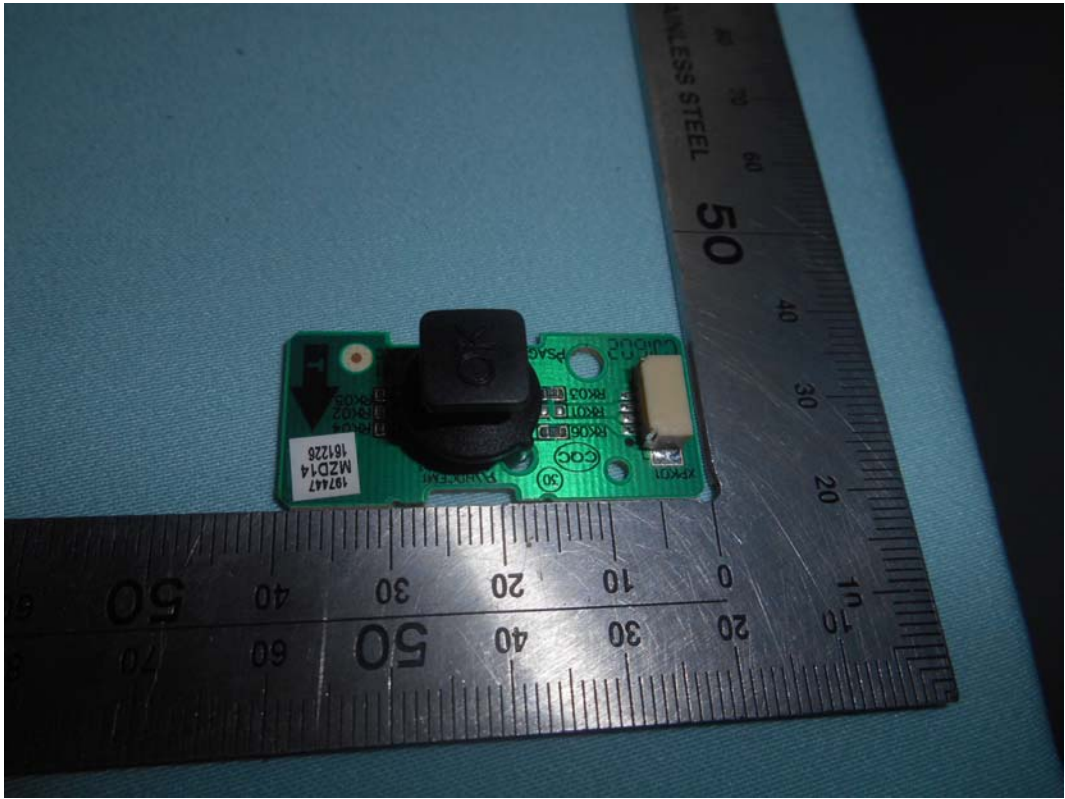


FIGURE 12
LED LCD TV (M/N: 65H9707)
KEY BOARD (SOLDERED SIDE)

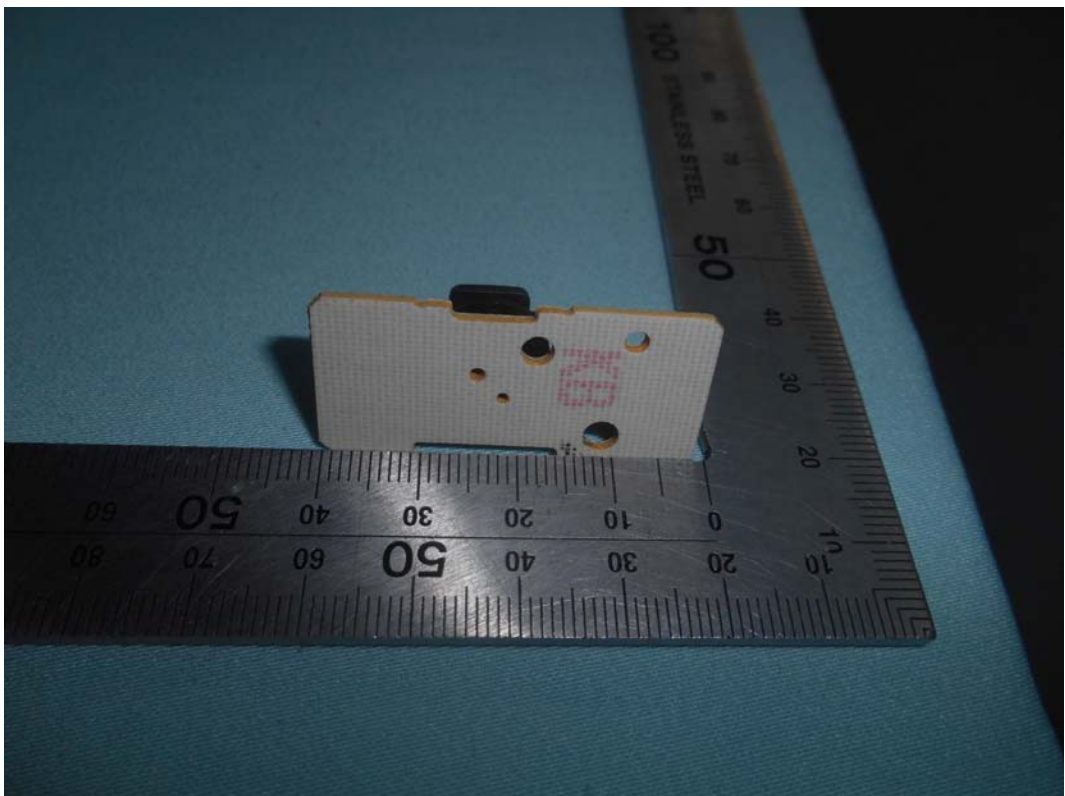


FIGURE 13
LED LCD TV (M/N: 65H9707)
RF BOARD (COMPONENT SIDE)



FIGURE 14
LED LCD TV (M/N: 65H9707)
RF BOARD (SOLDERED SIDE)

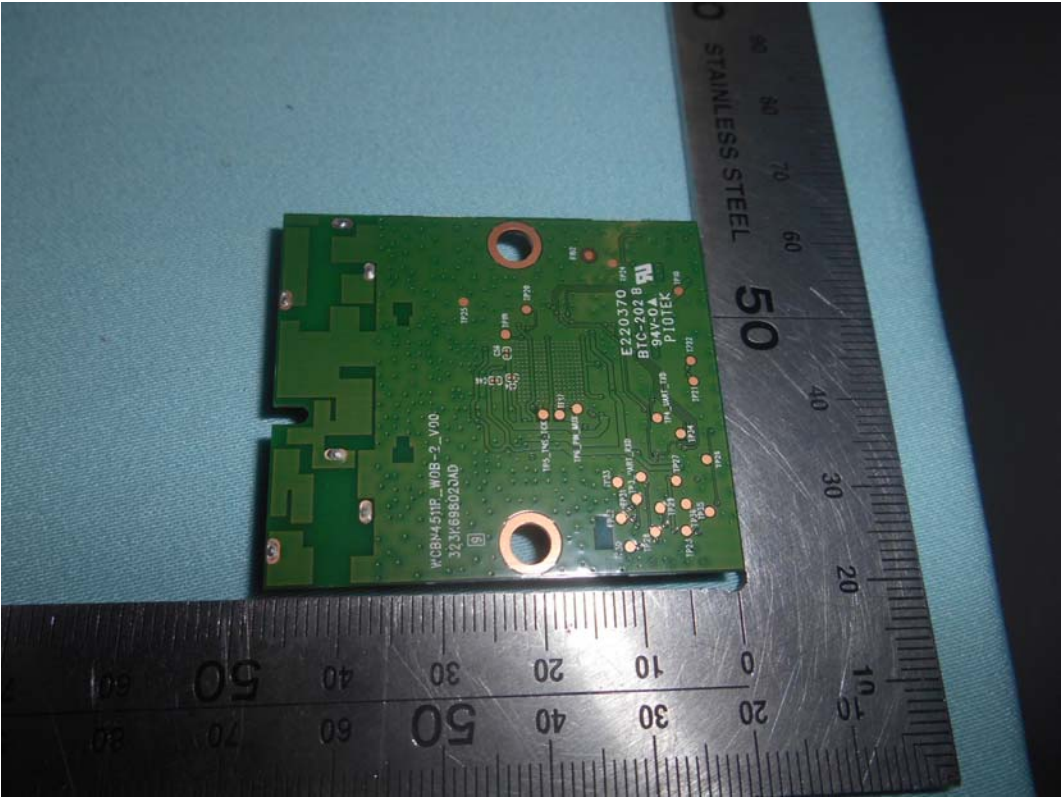


FIGURE 15
LED LCD TV (M/N: 65H9707)
RF LABEL



FIGURE 16
LED LCD TV (M/N: 65H9707)
CHIP AND CRYSTAL ON RF BOARD



FIGURE 17
LED LCD TV (M/N: 65H9707)
BOARD (COMPONENT SIDE)

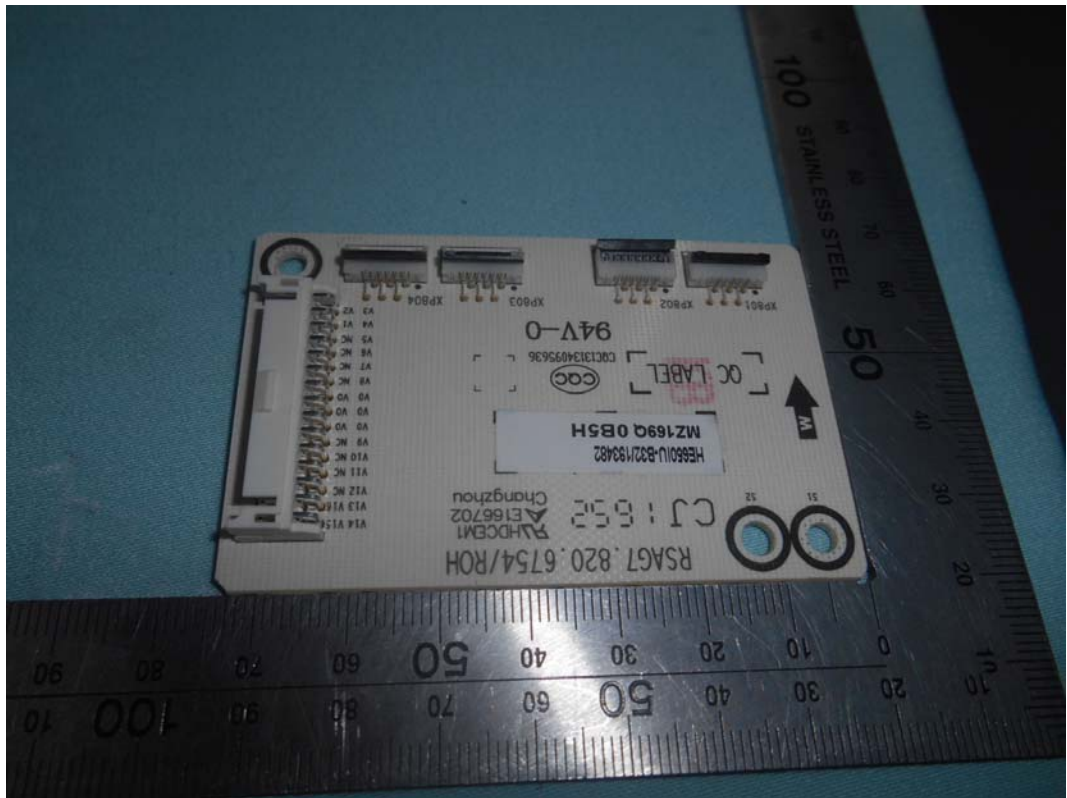


FIGURE 18
LED LCD TV (M/N: 65H9707)
BOARD (SOLDERED SIDE)

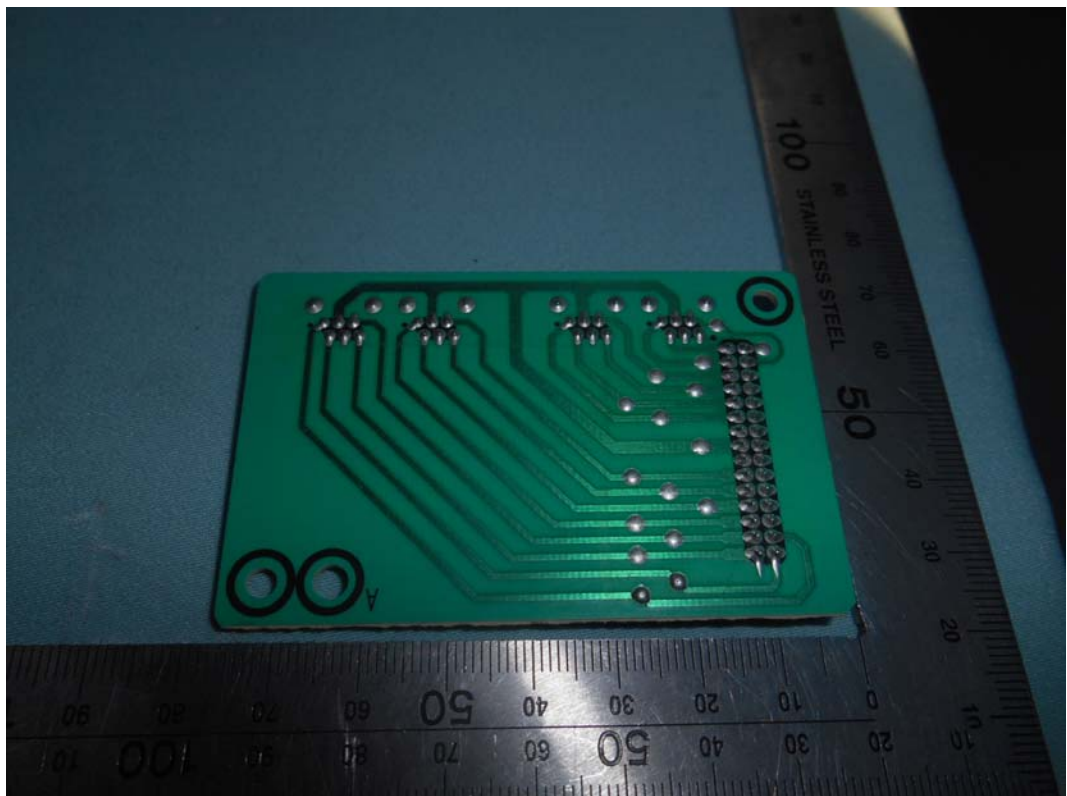


FIGURE 19
LED LCD TV (M/N: 65H9707)
PANEL BOARD (COMPONENT SIDE)

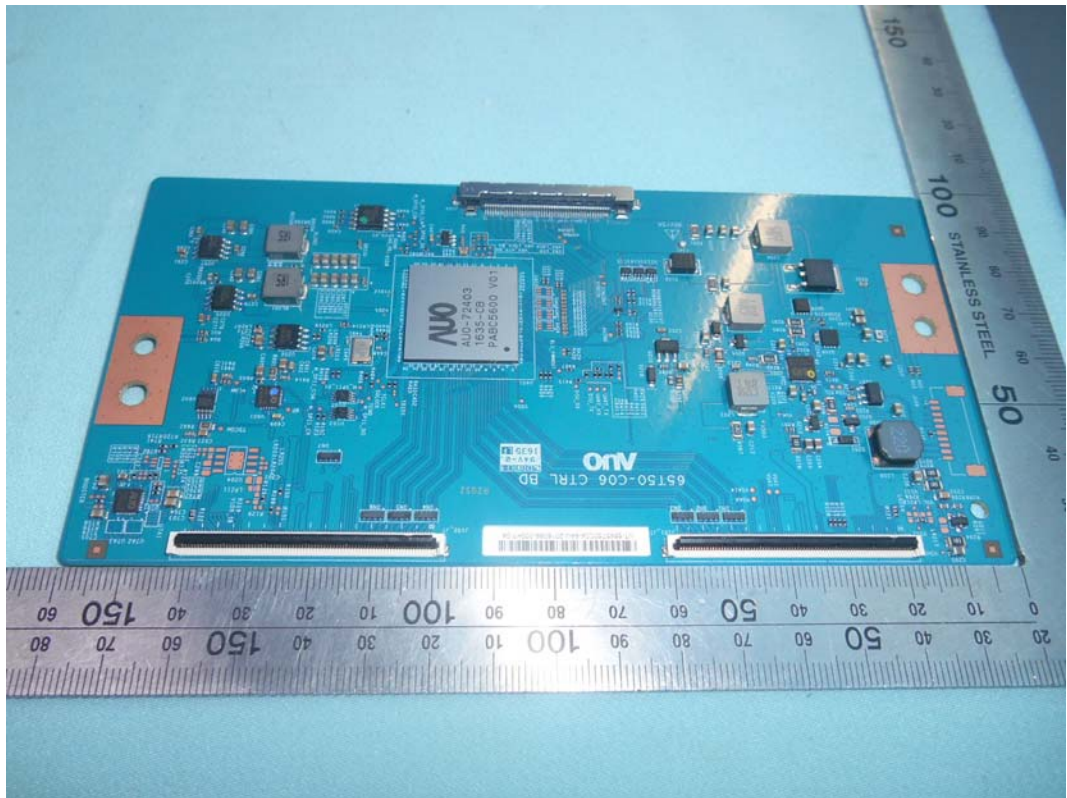


FIGURE 20
LED LCD TV (M/N: 65H9707)
PANEL BOARD (SOLDERED SIDE)

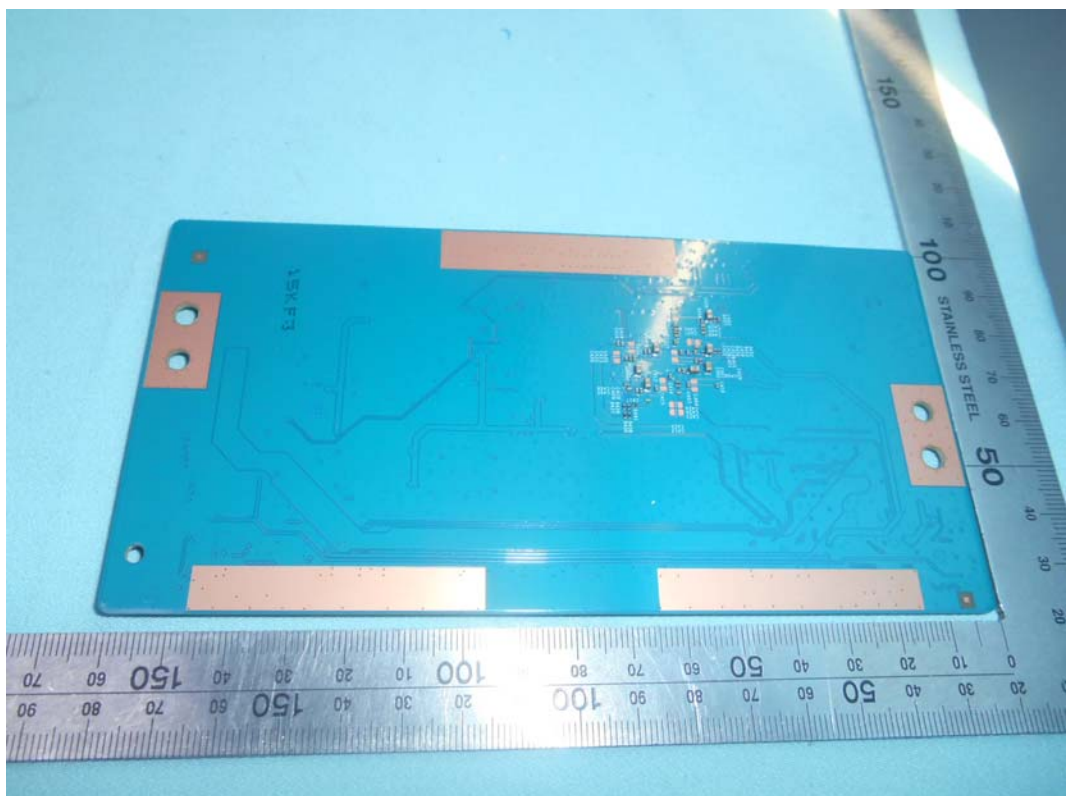


FIGURE 21
LED LCD TV (M/N: 65H9707)
CHIP AND CRYSTAL ON PANEL BOARD

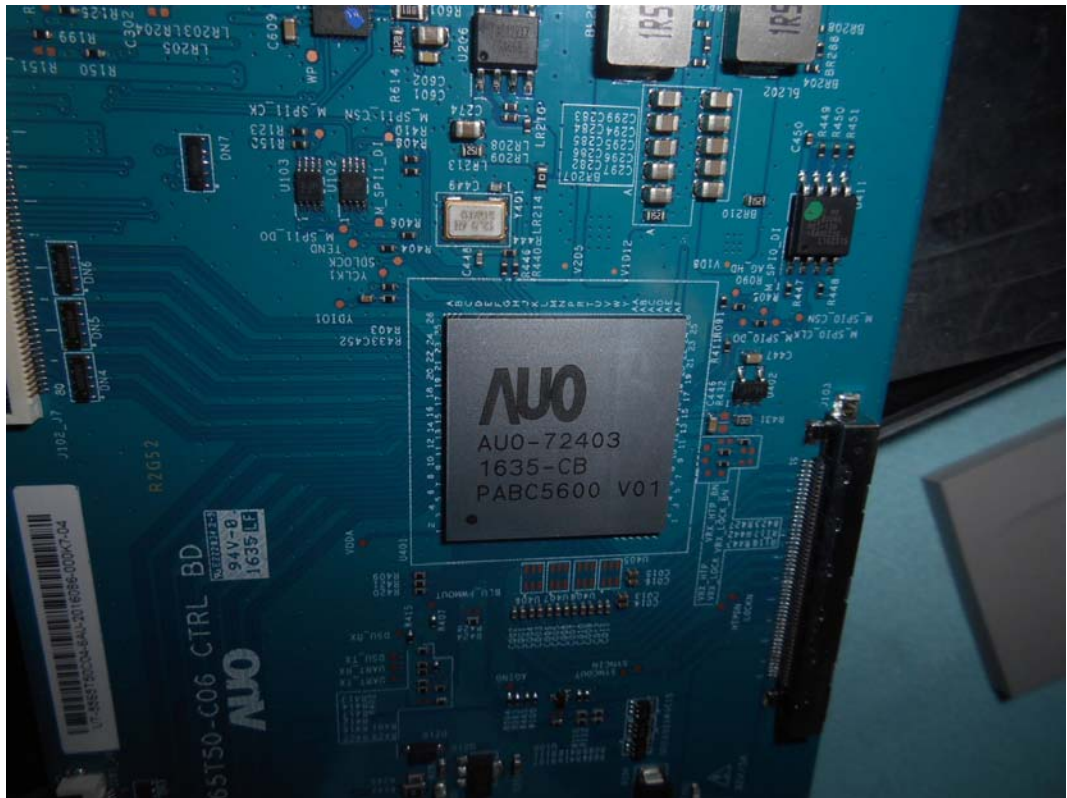


FIGURE 22
LED LCD TV (M/N: 65H9707)
DEBUG

