

FIGURE 1
LED LCD TV (M/N: 65H8C)
COVER REMOVED



FIGURE 2
LED LCD TV (M/N: 65H8C)
PANEL LABEL



FIGURE 3
LED LCD TV (M/N: 65H8C)
POWER BOARD (COMPONENT SIDE)

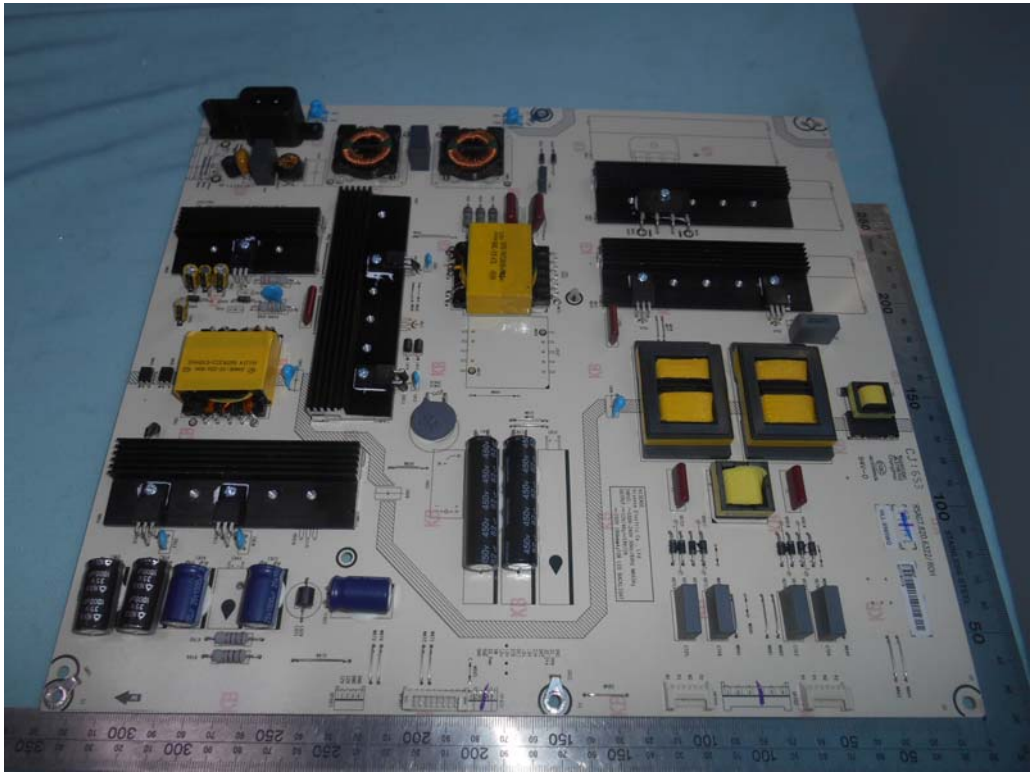


FIGURE 4
LED LCD TV (M/N: 65H8C)
POWER BOARD (SOLDERED SIDE)

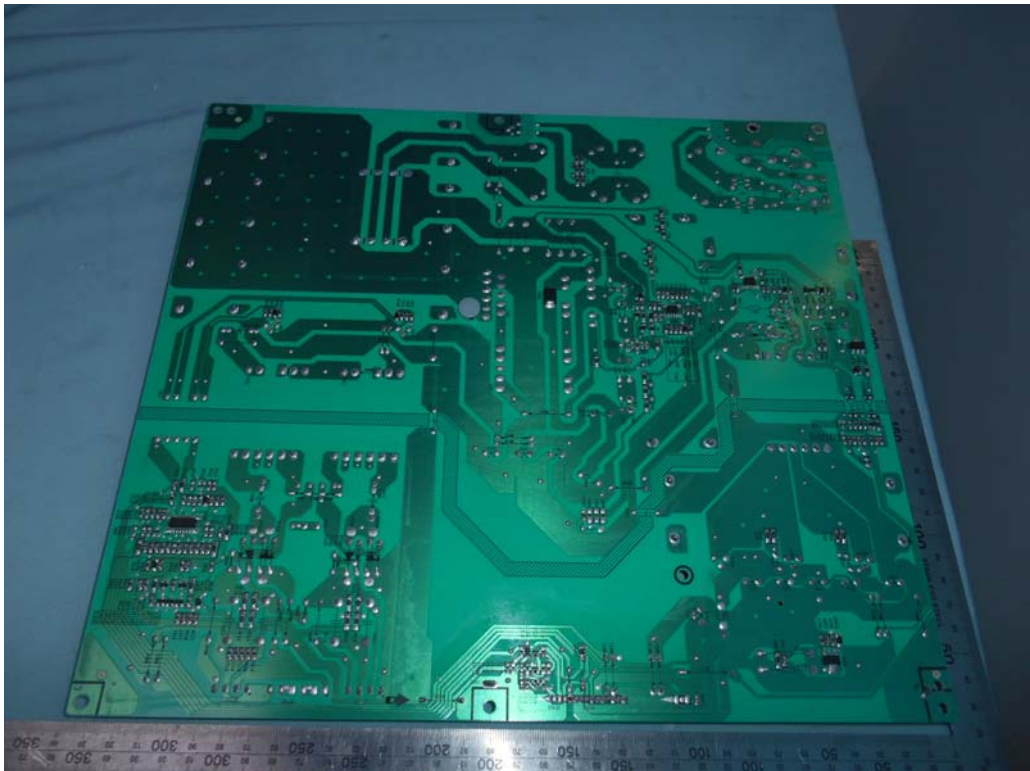


FIGURE 5
LED LCD TV (M/N: 65H8C)
MAIN BOARD (COMPONENT SIDE)



FIGURE 6
LED LCD TV (M/N: 65H8C)
MAIN BOARD (SOLDERED SIDE)

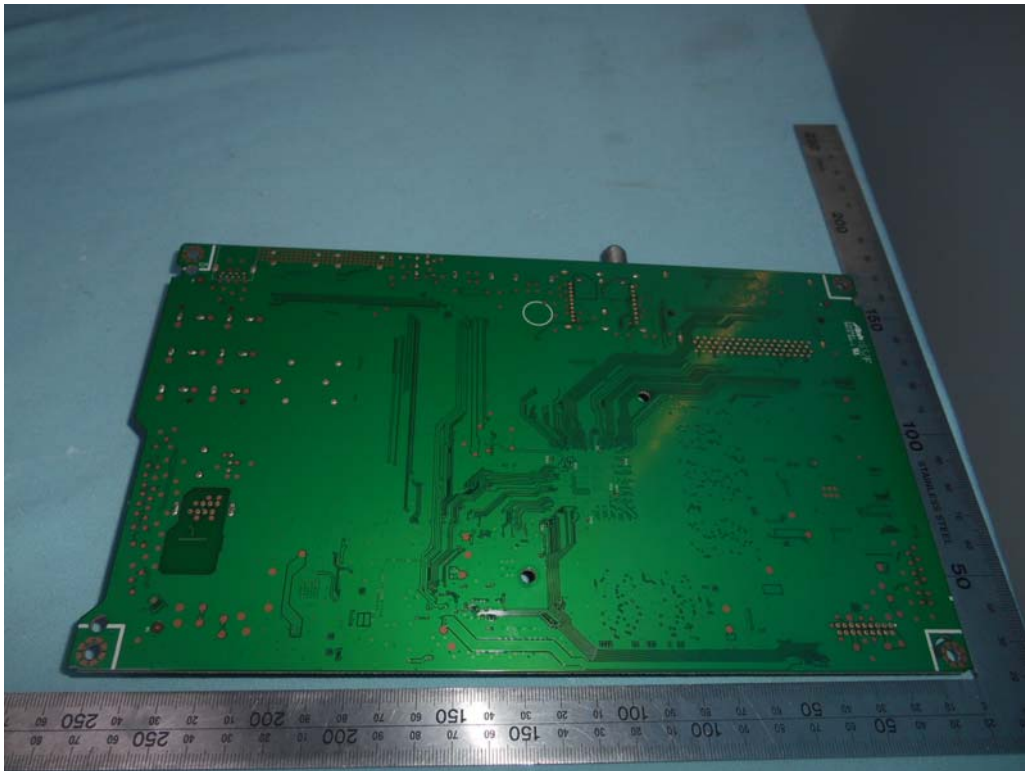


FIGURE 7
LED LCD TV (M/N: 65H8C)
CHIP & CRYSTAL ON MAIN BOARD



FIGURE 8
LED LCD TV (M/N: 65H8C)
TUNER

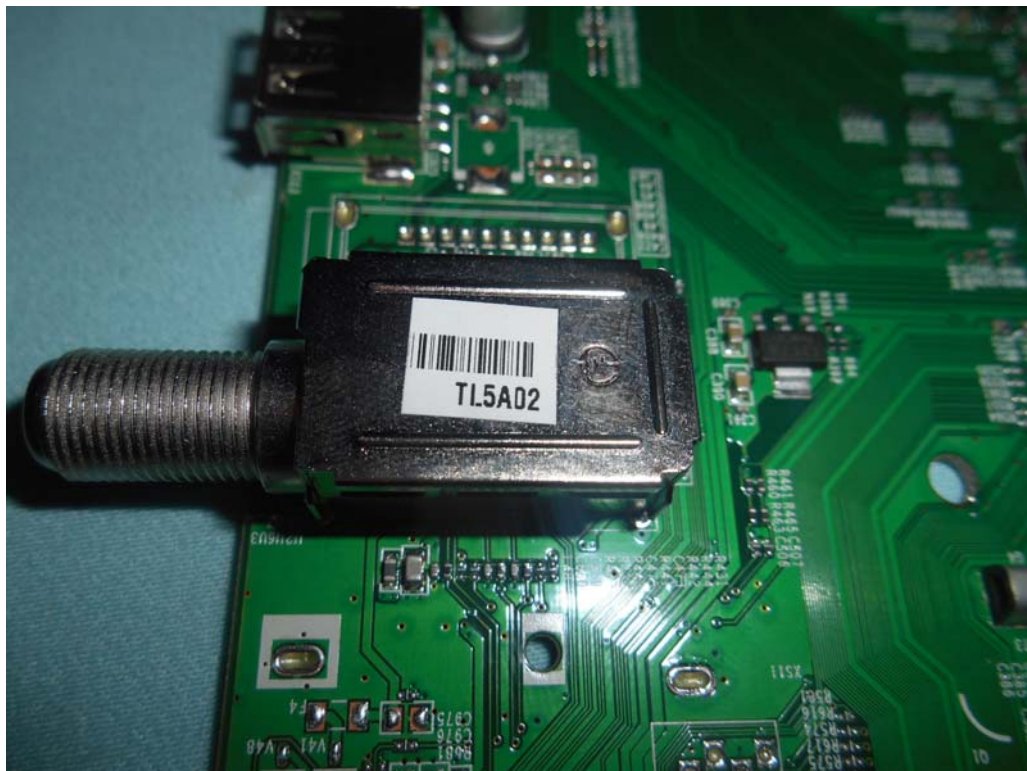


FIGURE 9
LED LCD TV (M/N: 65H8C)
TUNER COVER REMOVED

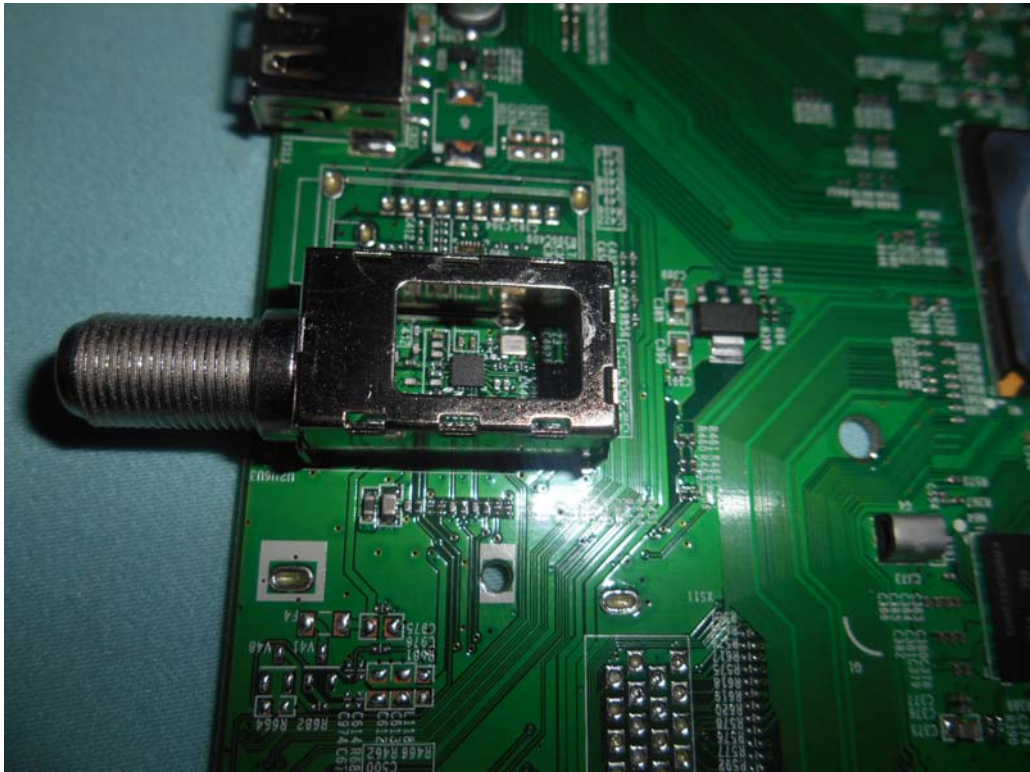


FIGURE 10
LED LCD TV (M/N: 65H8C)
PANEL CONTROL BOARD (COMPONENT SIDE)

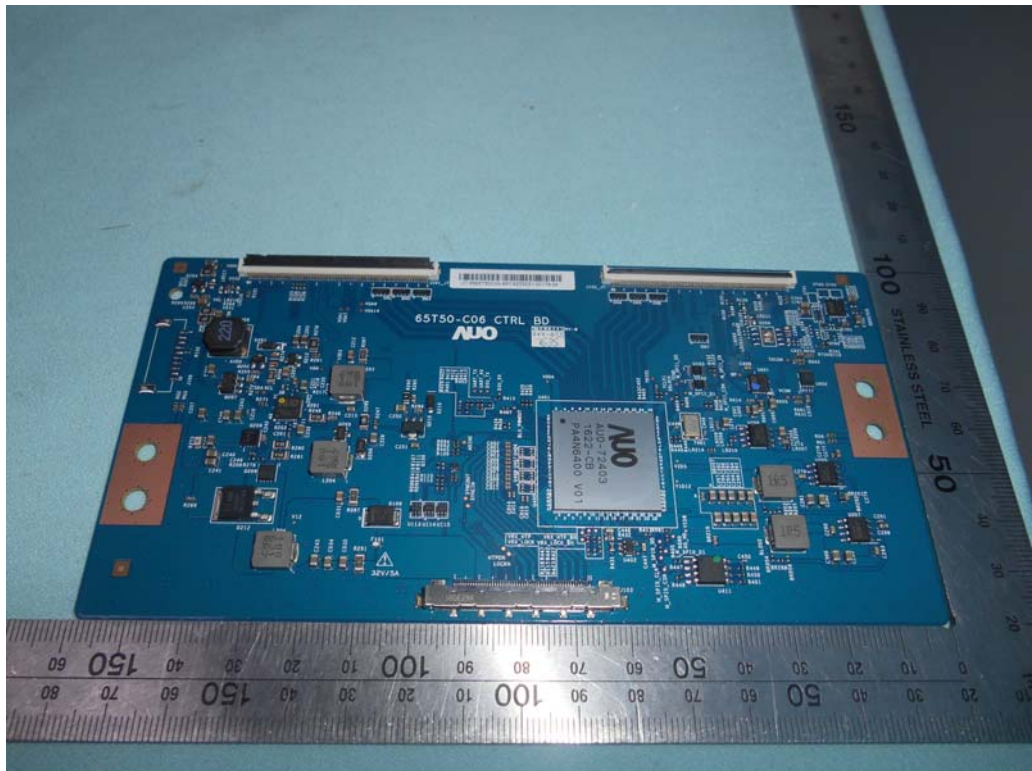


FIGURE 11
LED LCD TV (M/N: 65H8C)
PANEL CONTROL BOARD (SOLDERED SIDE)

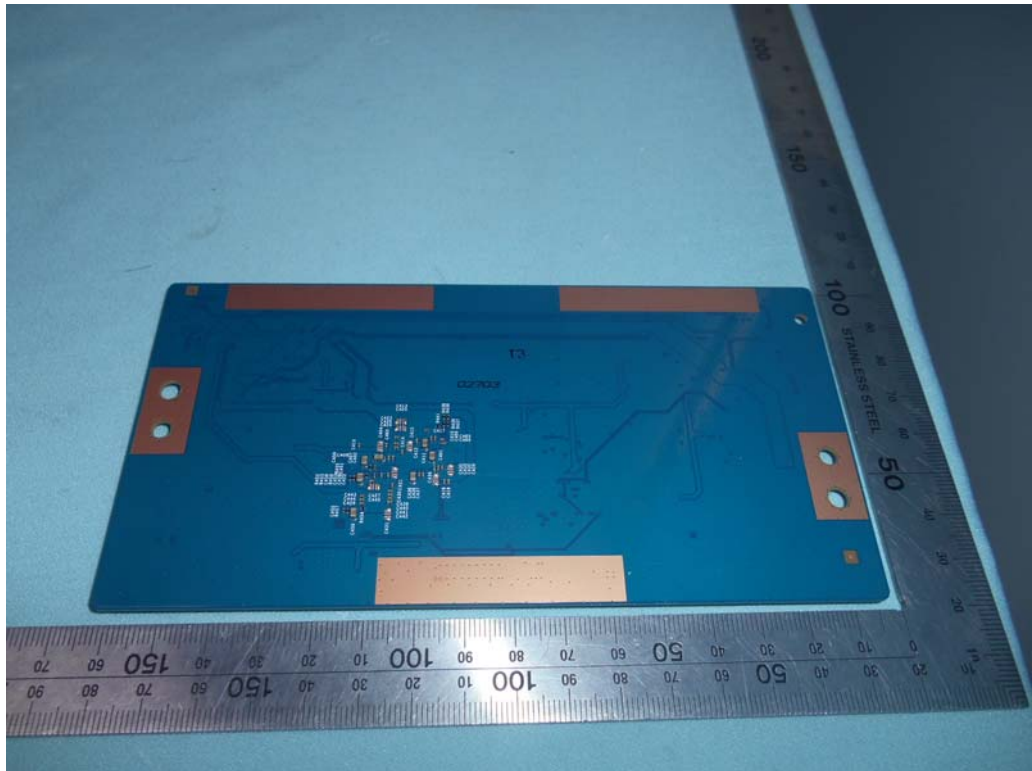


FIGURE 12
LED LCD TV (M/N: 65H8C)
CHIP & CRYSTAL ON PANEL BOARD

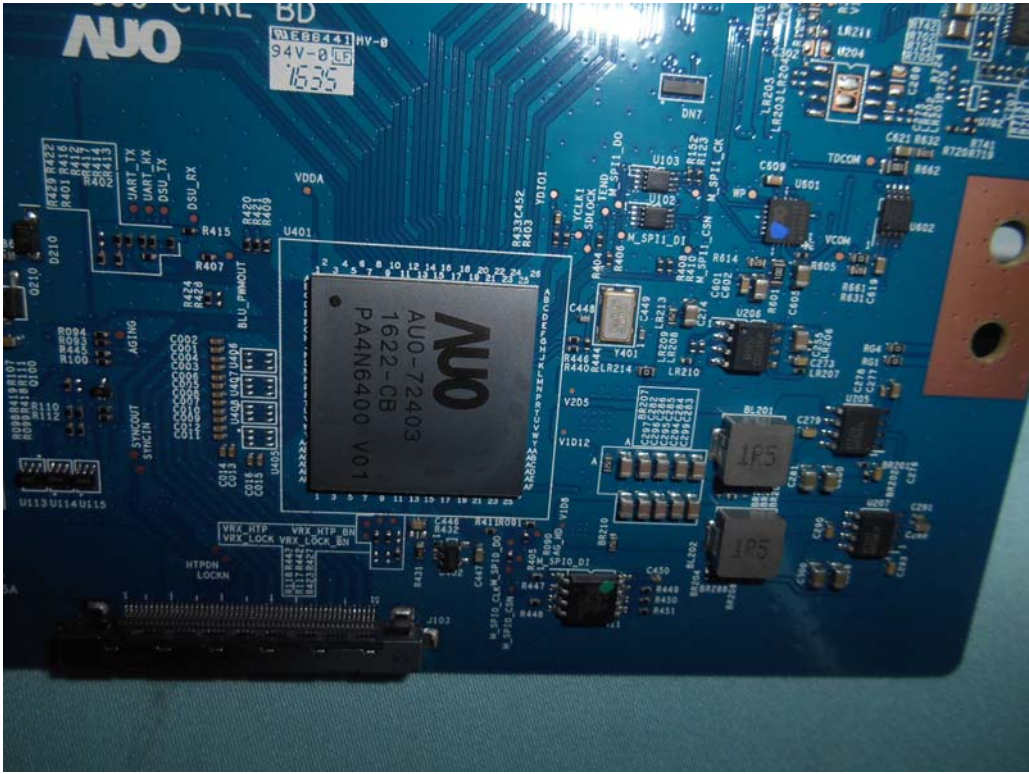


FIGURE 13
LED LCD TV (M/N: 65H8C)
RF BOARD (COMPONENT SIDE)



FIGURE 14
LED LCD TV (M/N: 65H8C)
RF BOARD (SOLDERED SIDE)

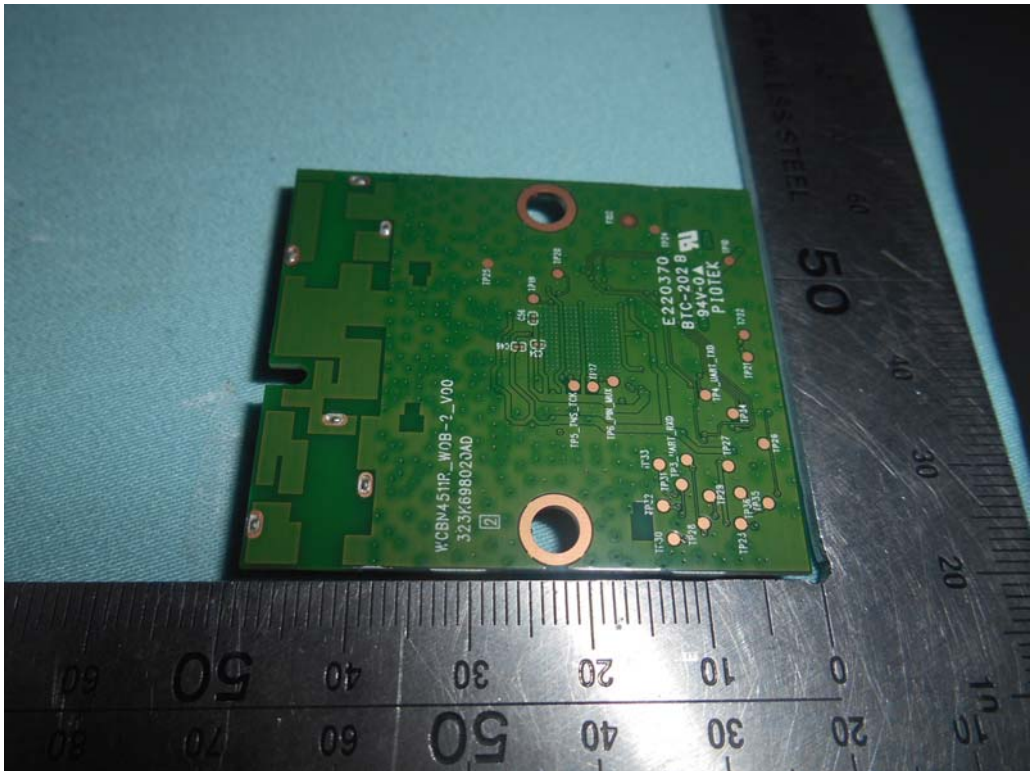


FIGURE 17
LED LCD TV (M/N: 65H8C)
KEY BOARD (COMPONENT SIDE)

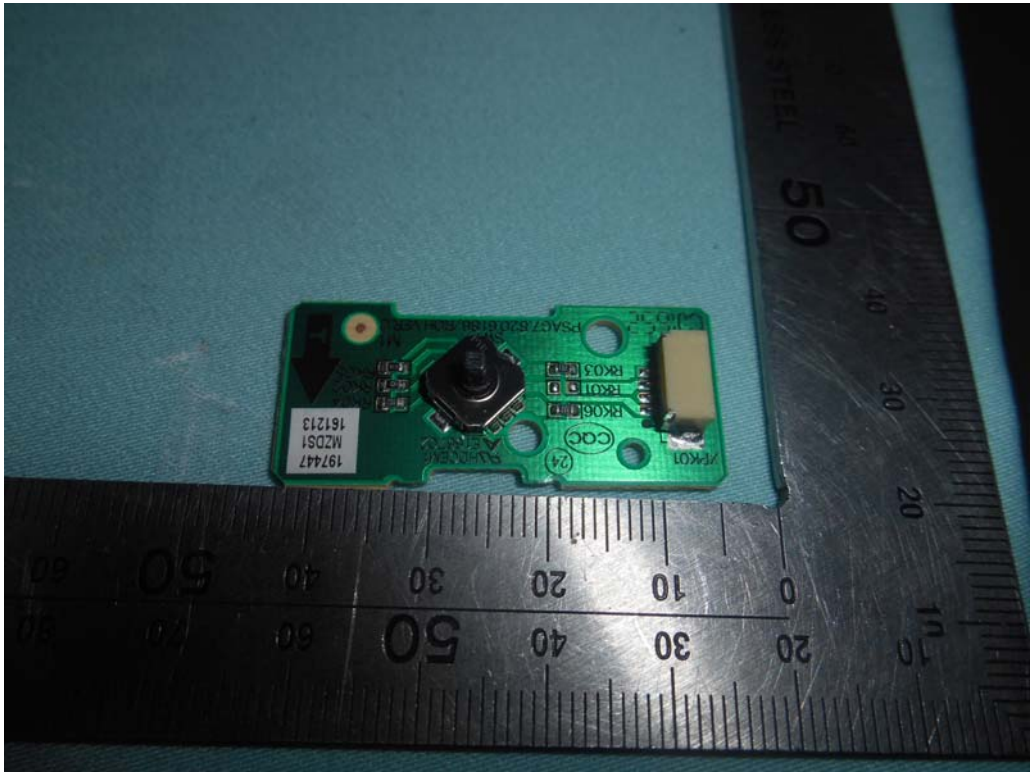


FIGURE 18
LED LCD TV (M/N: 65H8C)
KEY BOARD (SOLDERED SIDE)

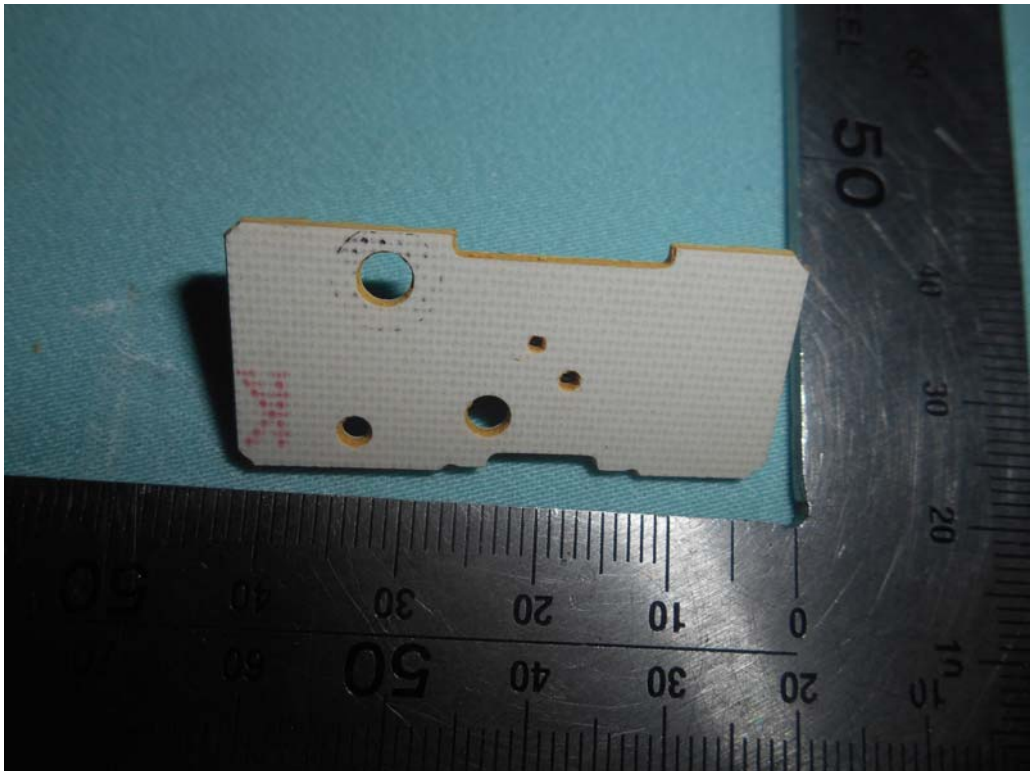


FIGURE 19
LED LCD TV (M/N: 65H8C)
IR BOARD (COMPONENT SIDE)

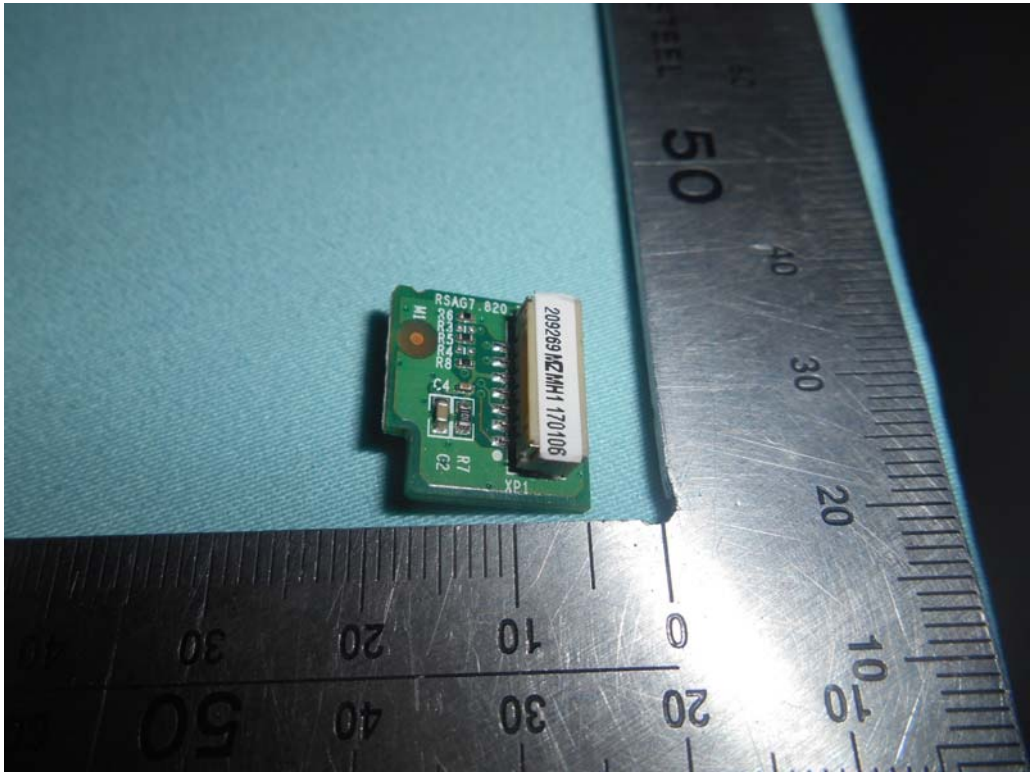


FIGURE 20
LED LCD TV (M/N: 65H8C)
IR BOARD (SOLDERED SIDE)

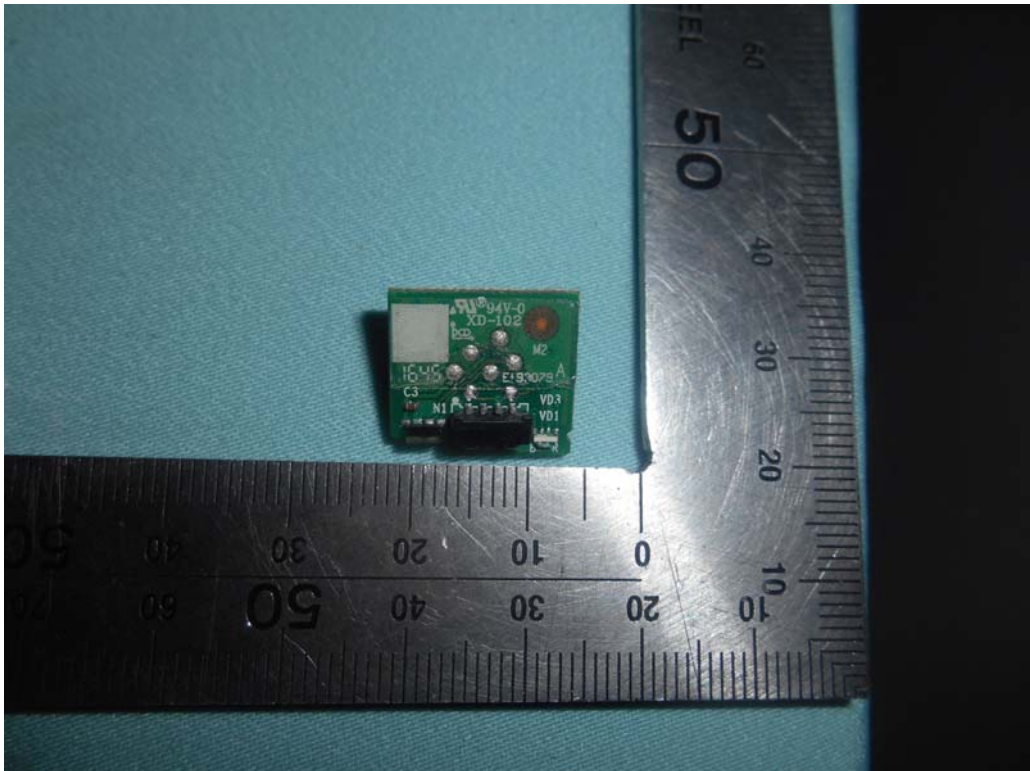


FIGURE 21
LED LCD TV (M/N: 65H8C)
DEBUG #1

