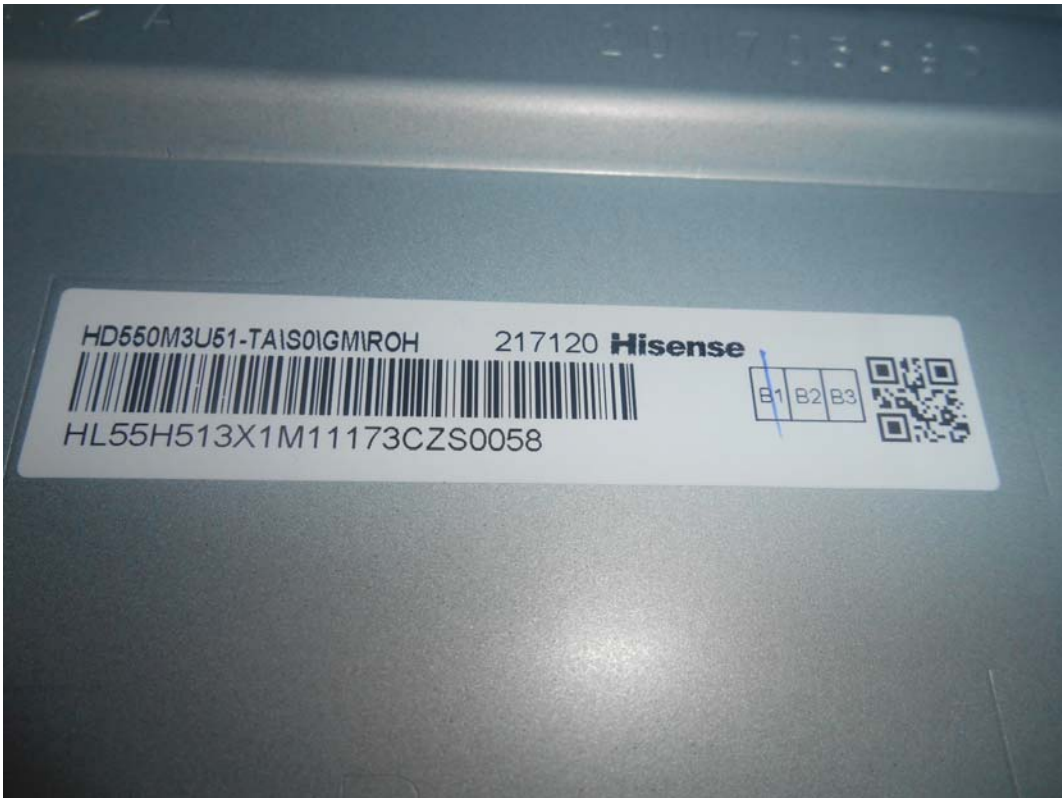


FIGURE 1  
LED LCD TV (M/N: 55H8D)  
COVER REMOVED



FIGURE 2  
LED LCD TV (M/N: 55H8D)  
PANEL LABEL



*FIGURE 3*  
*LED LCD TV (M/N: 55H8D)*  
*MAIN BOARD (COMPONENT SIDE)*



*FIGURE 4*  
*LED LCD TV (M/N: 55H8D)*  
*MAIN BOARD (SOLDERED SIDE)*

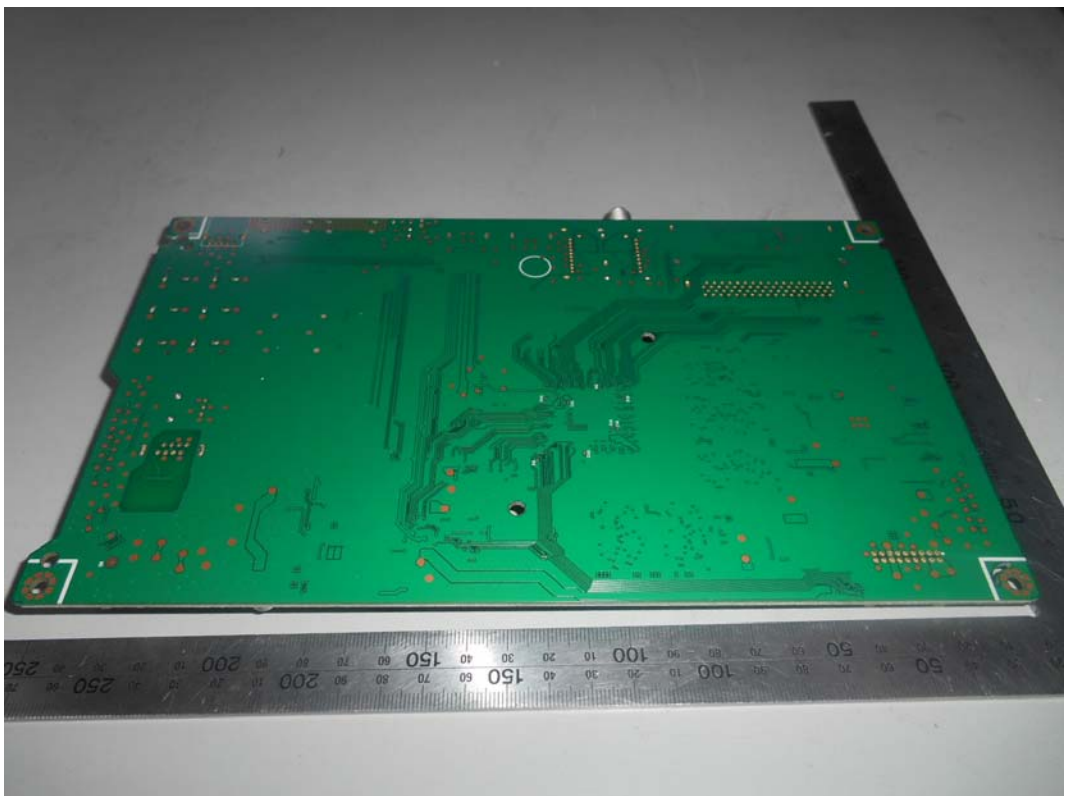
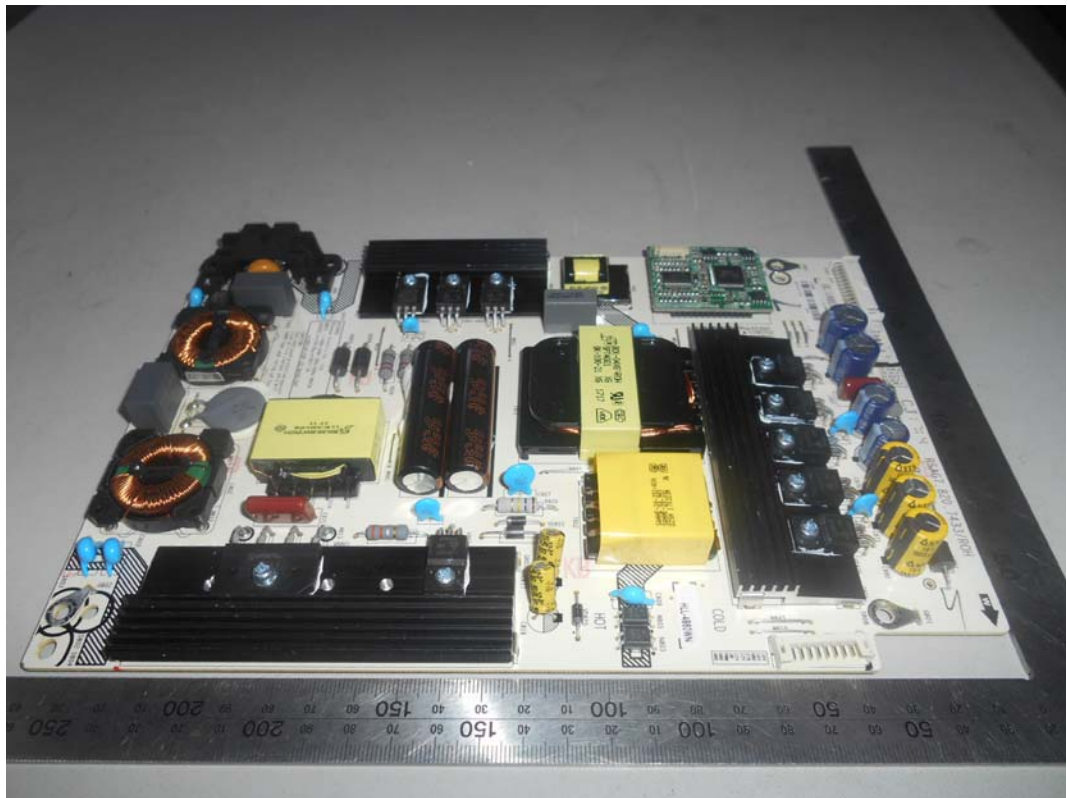


FIGURE 5  
LED LCD TV (M/N: 55H8D)  
CRYSTAL & CHIP ON MAIN BOARD



*FIGURE 6*  
*LED LCD TV (M/N: 55H8D)*  
*POWER BOARD (COMPONENT SIDE)*



*FIGURE 7*  
*LED LCD TV (M/N: 55H8D)*  
*POWER BOARD (SOLDERED SIDE)*

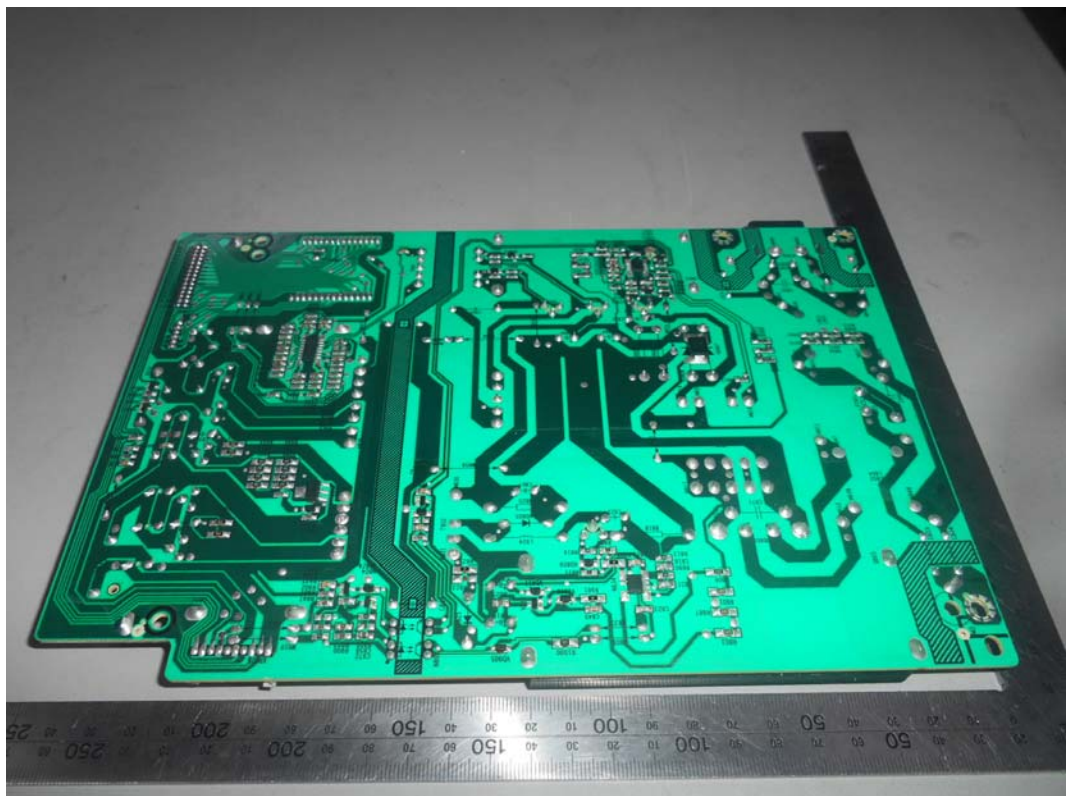


FIGURE 8  
LED LCD TV (M/N: 55H8D)  
TUNER BOARD

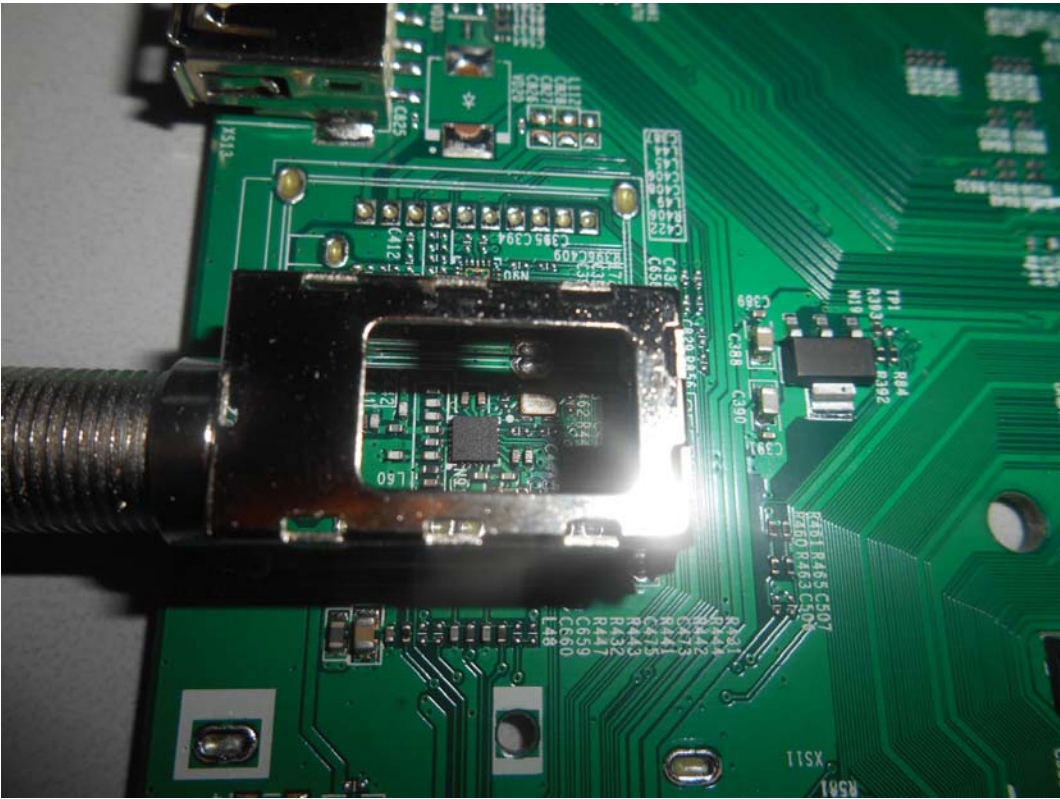


FIGURE 9  
LED LCD TV (M/N: 55H8D)  
IR BOARD (COMPONENT SIDE)

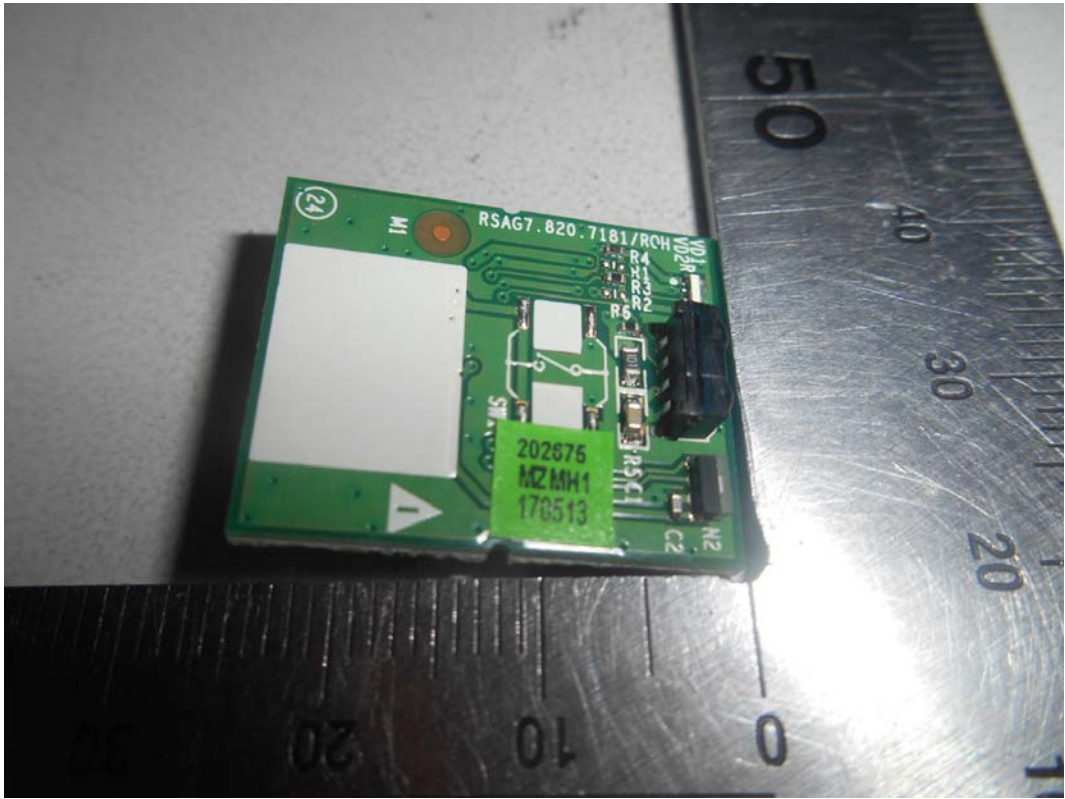


FIGURE 10  
LED LCD TV (M/N: 55H8D)  
IR BOARD (SOLDERED SIDE)



FIGURE 11  
LED LCD TV (M/N: 55H8D)  
RF BOARD (COMPONENT SIDE)



FIGURE 12  
LED LCD TV (M/N: 55H8D)  
RF BOARD (SOLDERED SIDE)

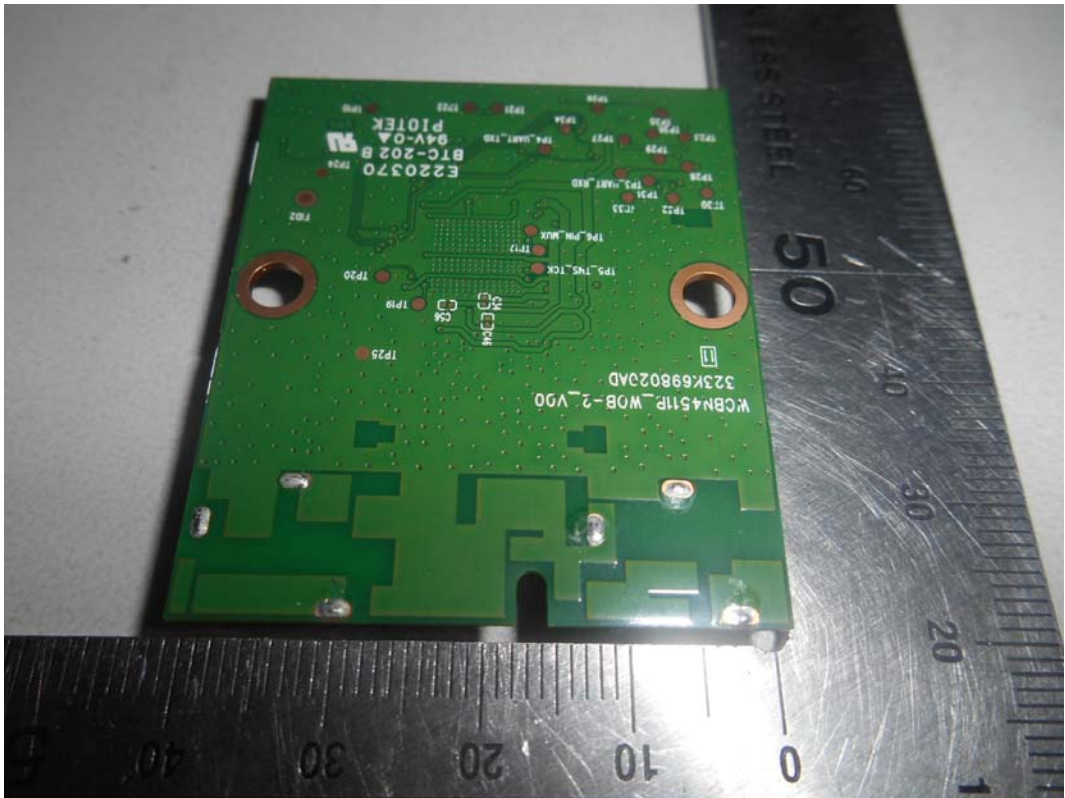


FIGURE 13  
LED LCD TV (M/N: 55H8D)  
RF BOARD LABEL



FIGURE 14  
LED LCD TV (M/N: 55H8D)  
CHIP AND CRYSTAL ON RF BOARD





FIGURE 15  
LED LCD TV (M/N: 55H8D)  
LCD PANEL BOARD (COMPONENT SIDE)



FIGURE 16  
LED LCD TV (M/N: 55H8D)  
LCD PANEL BOARD (SOLDERED SIDE)

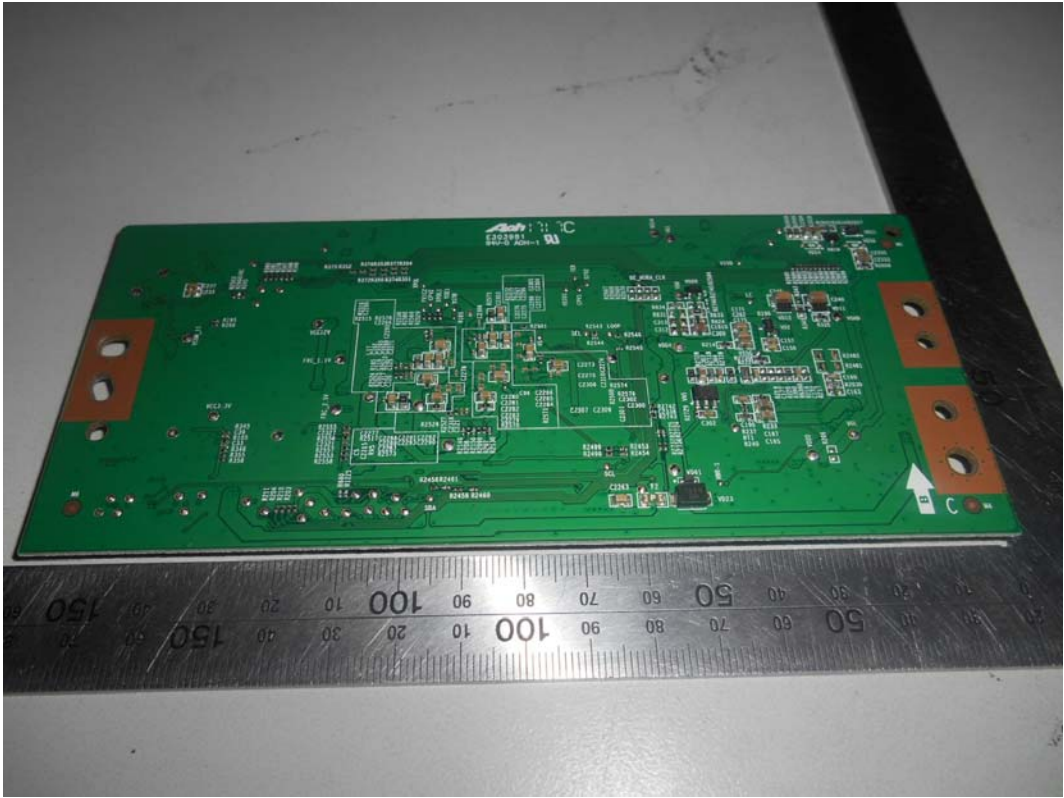


FIGURE 17  
LED LCD TV (M/N: 55H8D)  
CHIP ON LCD PANEL BOARD

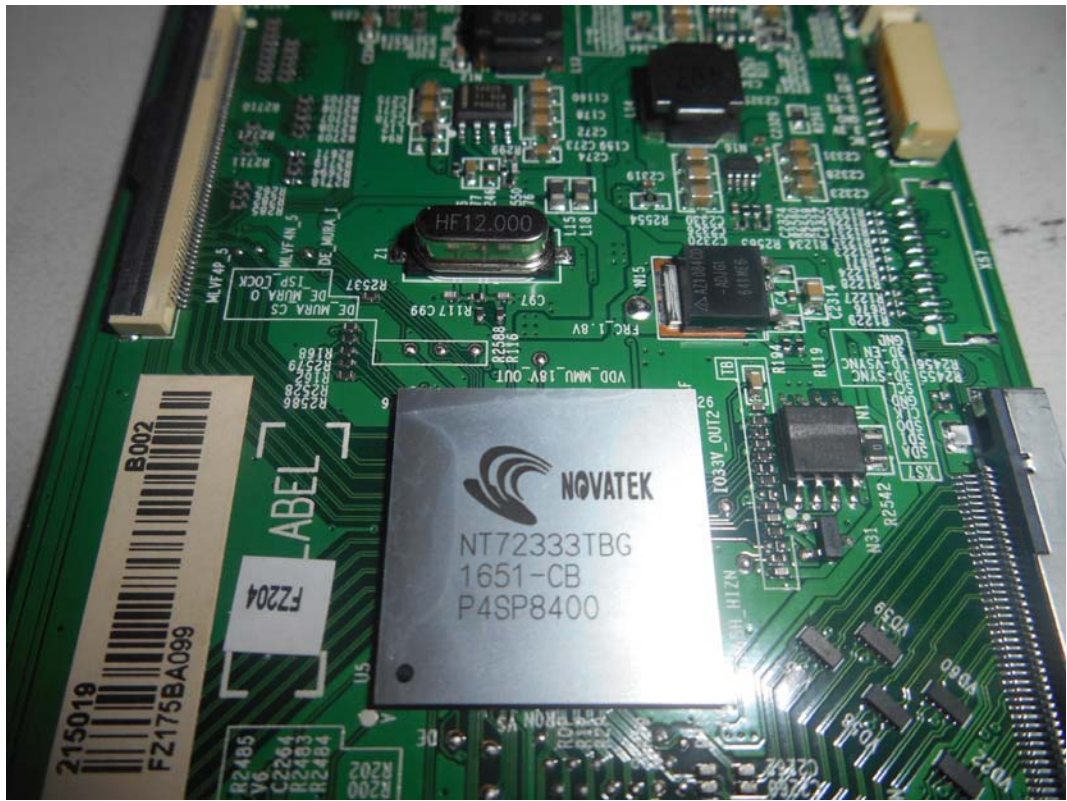


FIGURE 18  
LED LCD TV (M/N: 55H8D)  
KEY BOARD (COMPONENT SIDE)

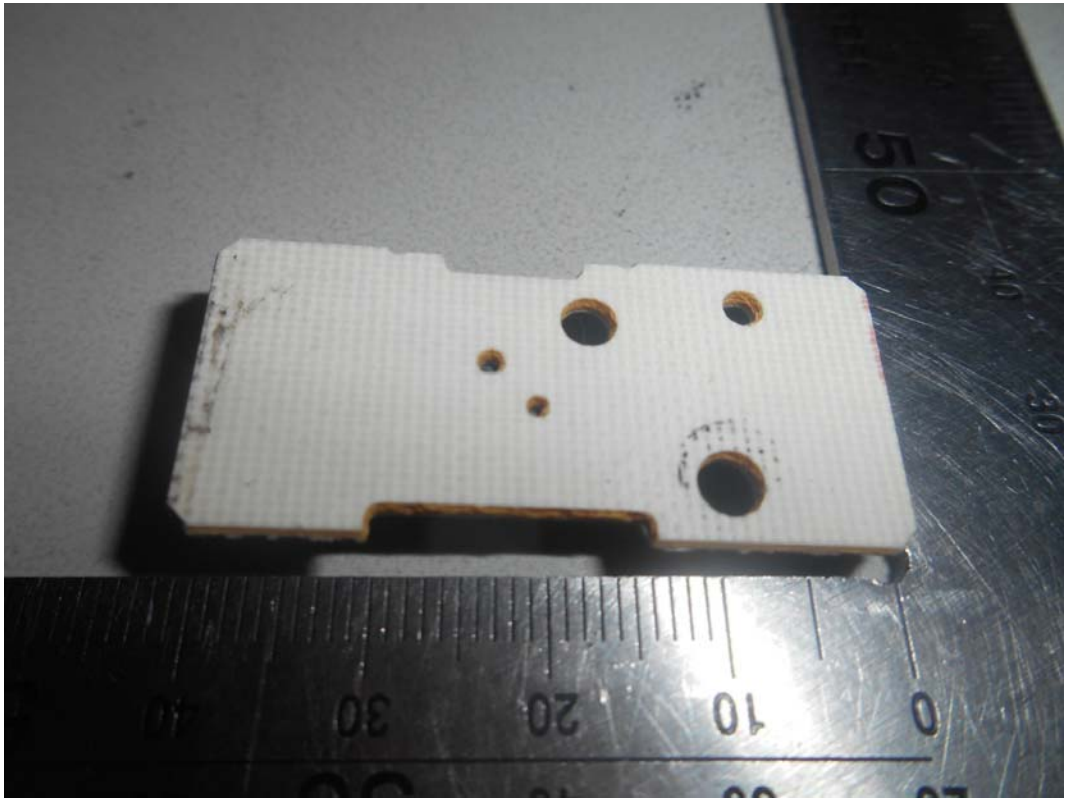


FIGURE 19  
LED LCD TV (M/N: 55H8D)  
KEY BOARD (SOLDERED SIDE)

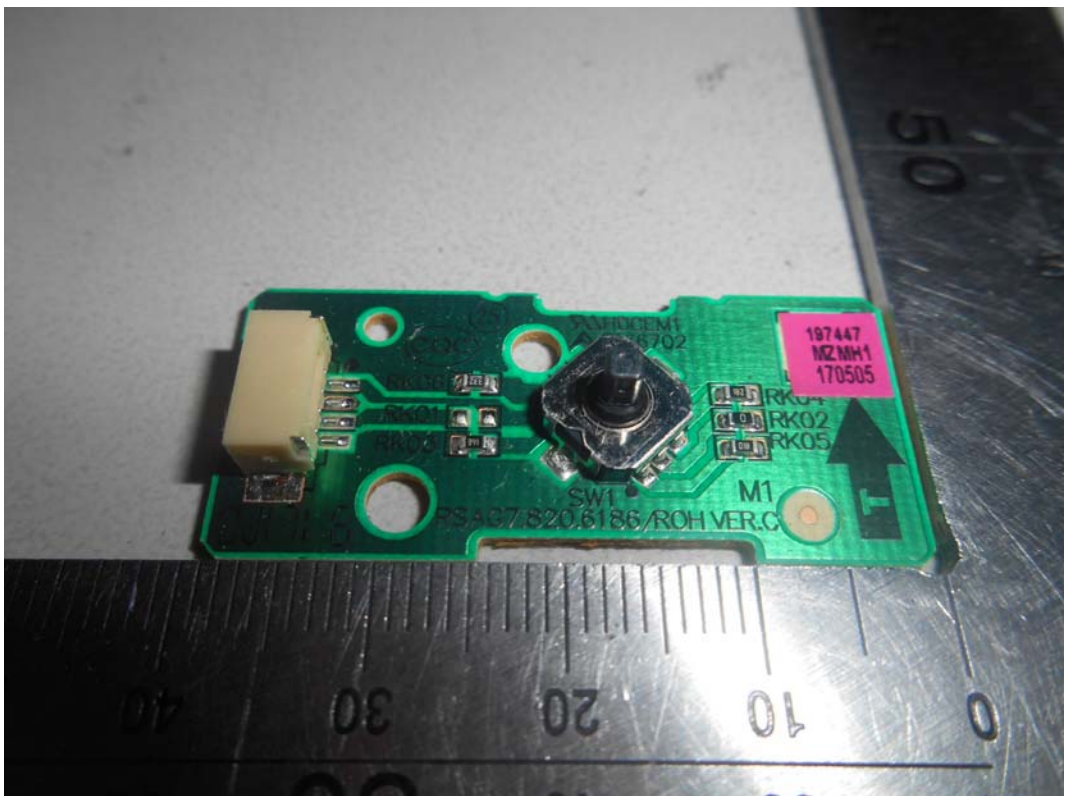


FIGURE 20  
LED LCD TV(M/N: 55H8D)  
DEBUG

