

*FIGURE 1*  
*LED LCD TV (M/N: 50H8C)*  
*COVER REMOVED*



*FIGURE 2*  
*LED LCD TV (M/N: 50H8C)*  
*LCD PANEL LABEL*



*FIGURE 3*  
*LED LCD TV (M/N: 50H8C)*  
*MAIN BOARD (COMPONENT SIDE)*



*FIGURE 4*  
*LED LCD TV (M/N: 50H8C)*  
*MAIN BOARD (SOLDERED SIDE)*

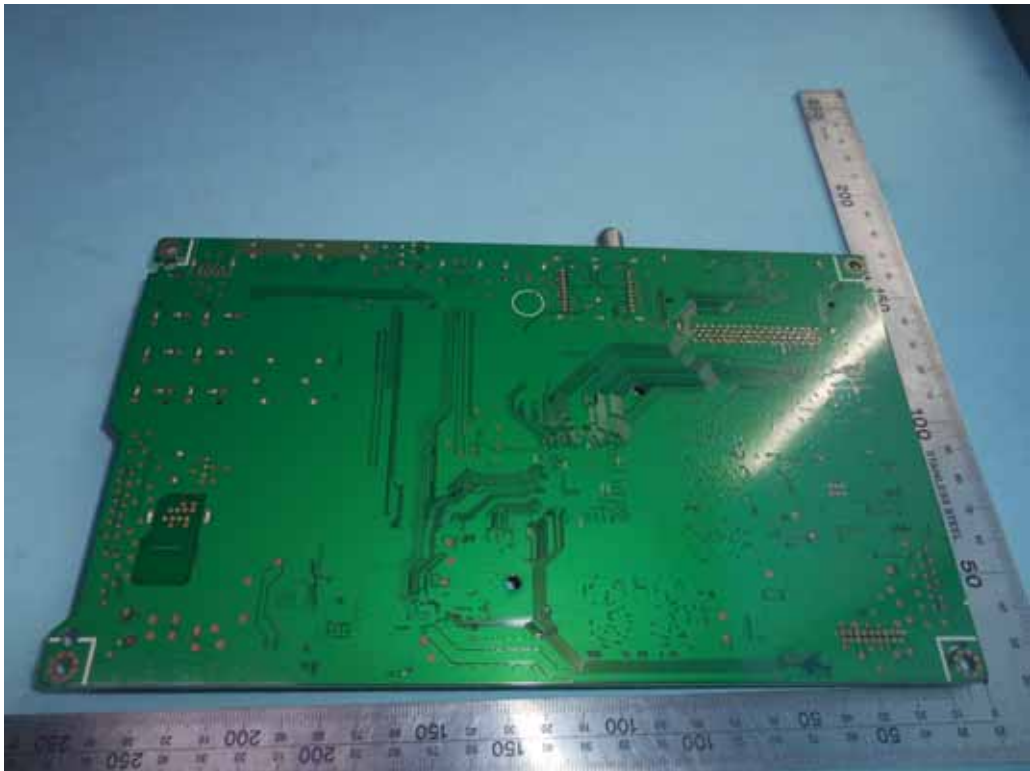


FIGURE 5  
LED LCD TV (M/N: 50H8C)  
CHIP & CRYSTAL ON MAIN BOARD



FIGURE 6  
LED LCD TV (M/N: 50H8C)  
TUNER



*FIGURE 7  
LED LCD TV (M/N: 50H8C)  
PANEL BOARD (COMPONENT SIDE)*



*FIGURE 8  
LED LCD TV (M/N: 50H8C)  
PANEL BOARD (SOLDERED SIDE)*

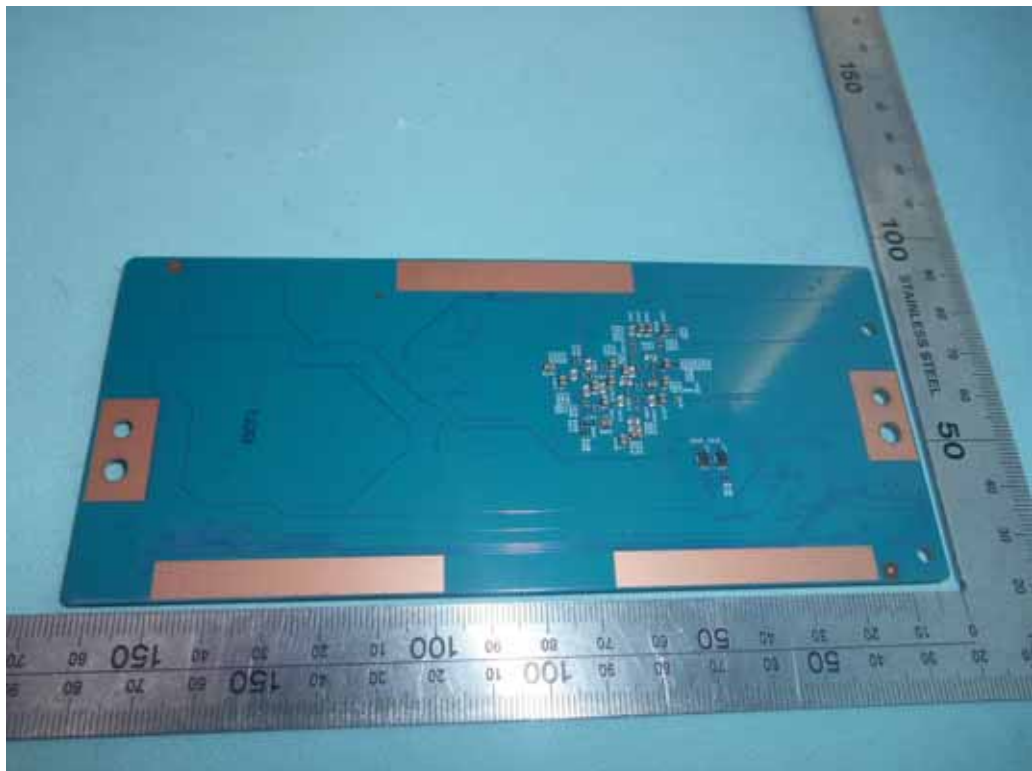


FIGURE 9  
LED LCD TV (M/N: 50H8C)  
CHIP & CRYSTAL ON PANEL BOARD



FIGURE 10  
LED LCD TV (M/N: 50H8C)  
RF BOARD (COMPONENT SIDE)

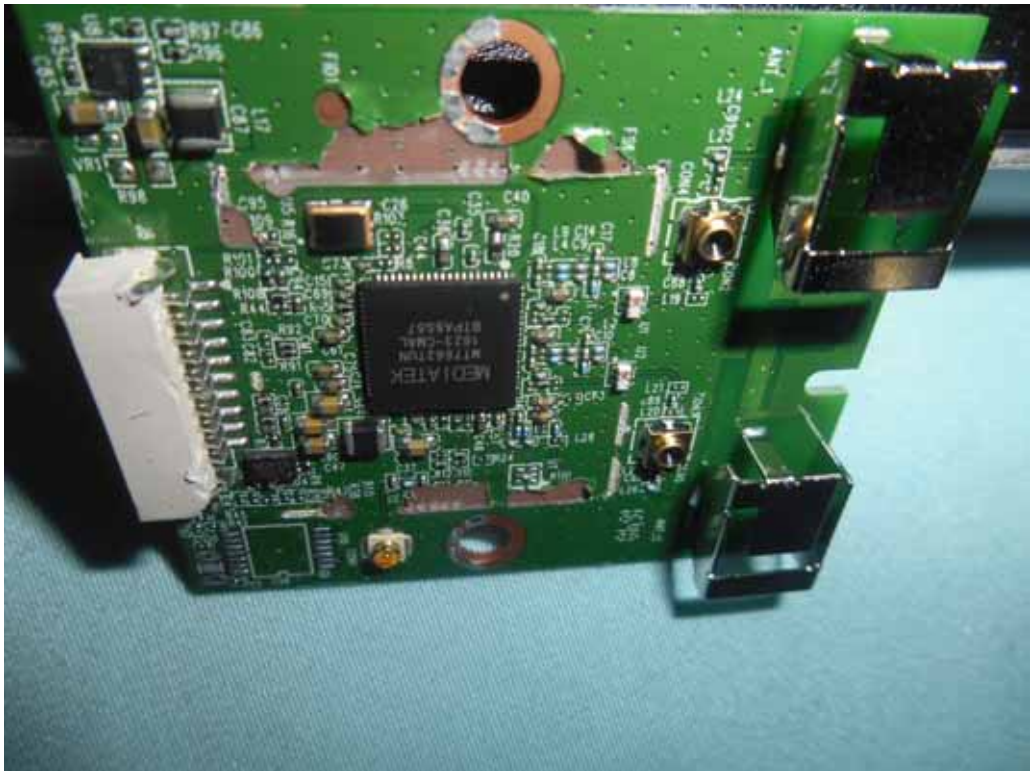


FIGURE 11  
LED LCD TV (M/N: 50H8C)  
RF BOARD (SOLDERED SIDE)

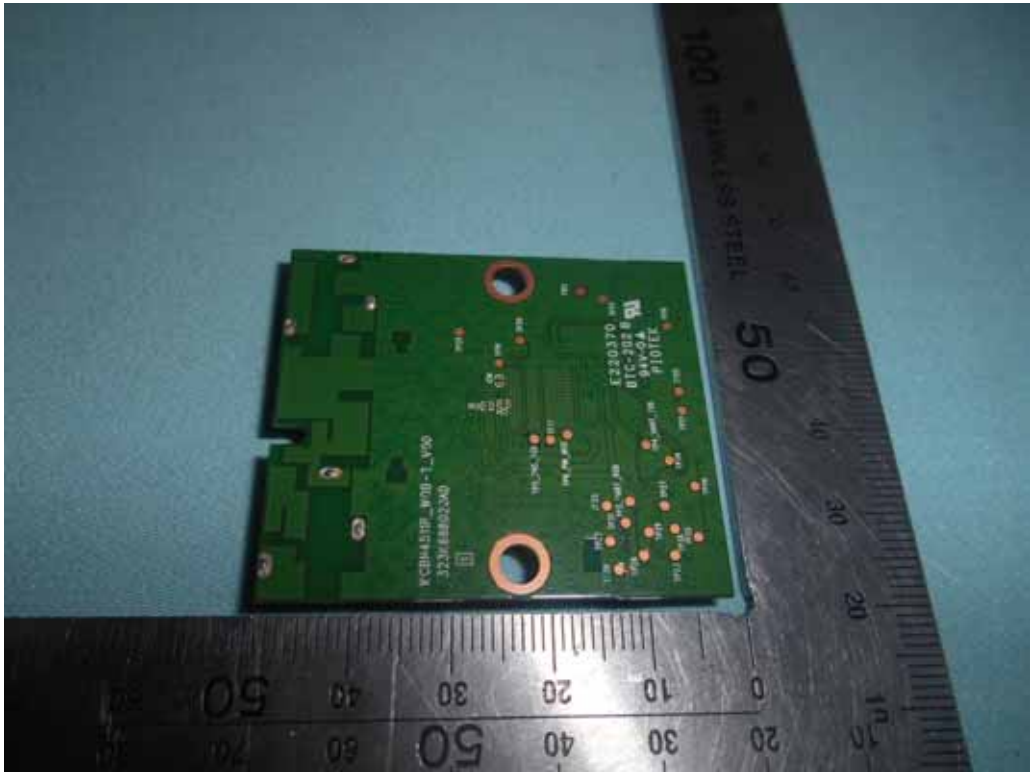


FIGURE 12  
LED LCD TV (M/N: 50H8C)  
RF LABEL



*FIGURE 13  
LED LCD TV (M/N: 50H8C)  
POWER BOARD (COMPONENT SIDE)*



*FIGURE 14  
LED LCD TV (M/N: 50H8C)  
POWER BOARD (SOLDERED SIDE)*

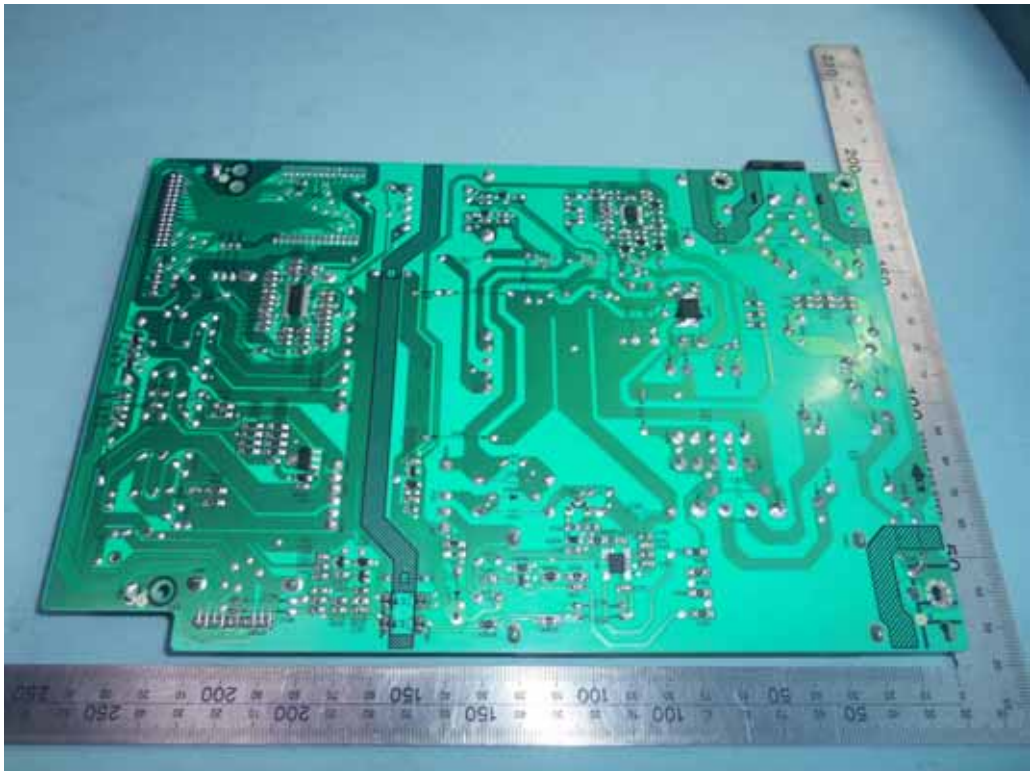


FIGURE 15  
LED LCD TV (M/N: 50H8C)  
AC BOARD (COMPONENT SIDE)

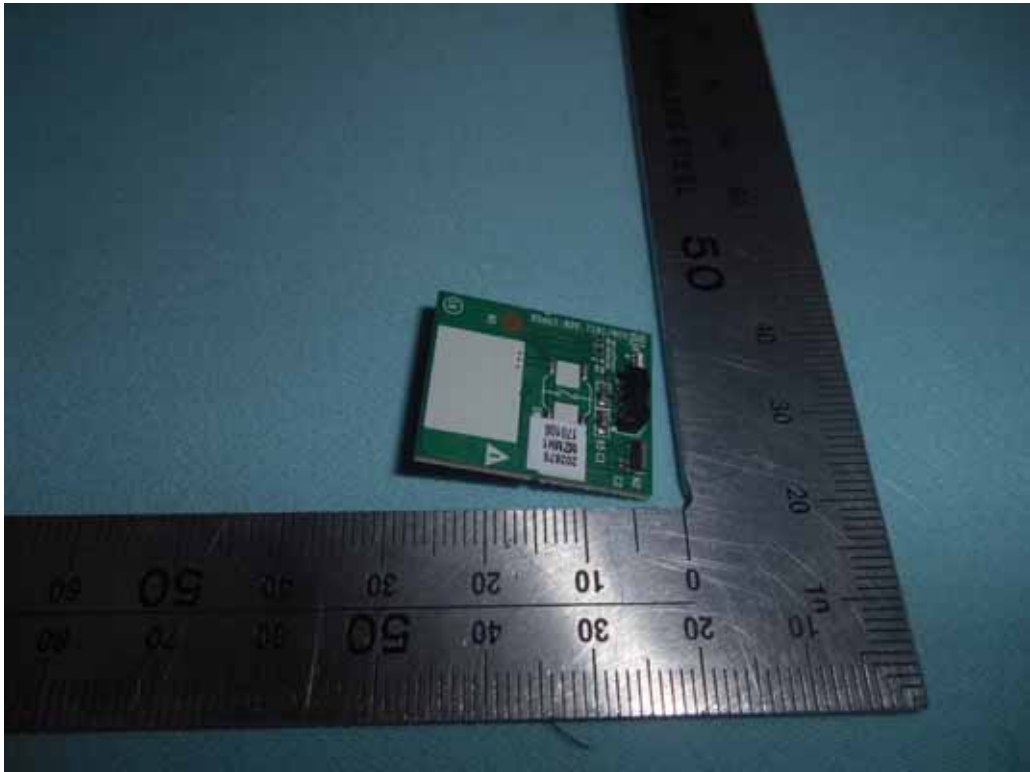
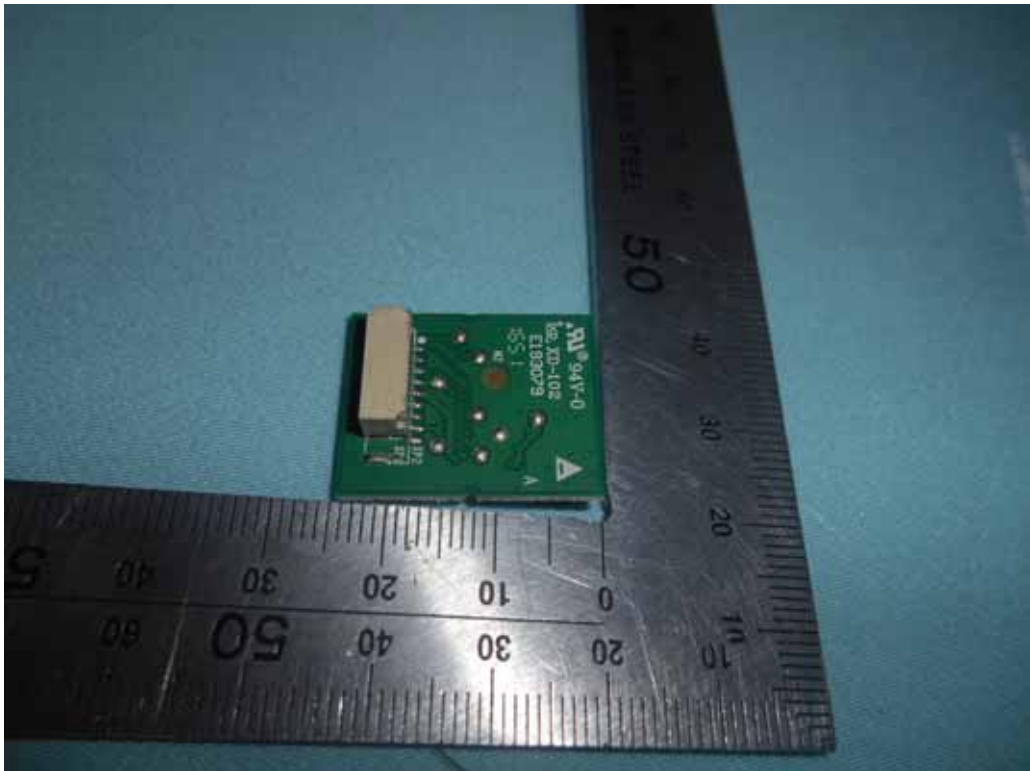
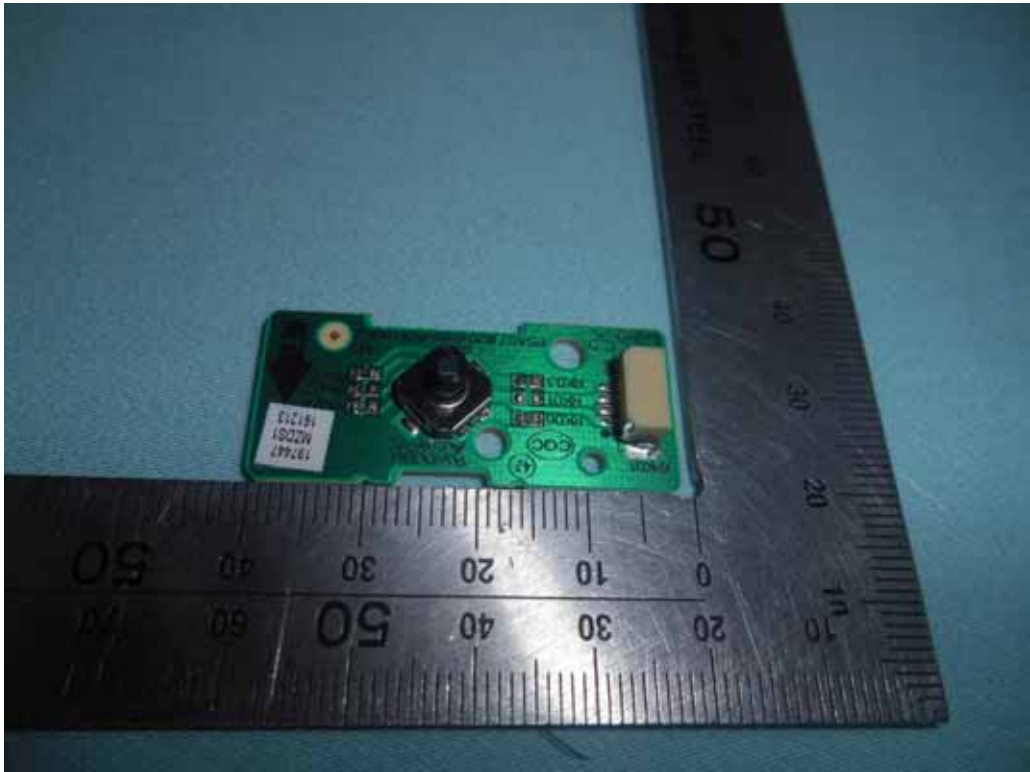


FIGURE 16  
LED LCD TV (M/N: 50H8C)  
AC BOARD (SOLDERED SIDE)

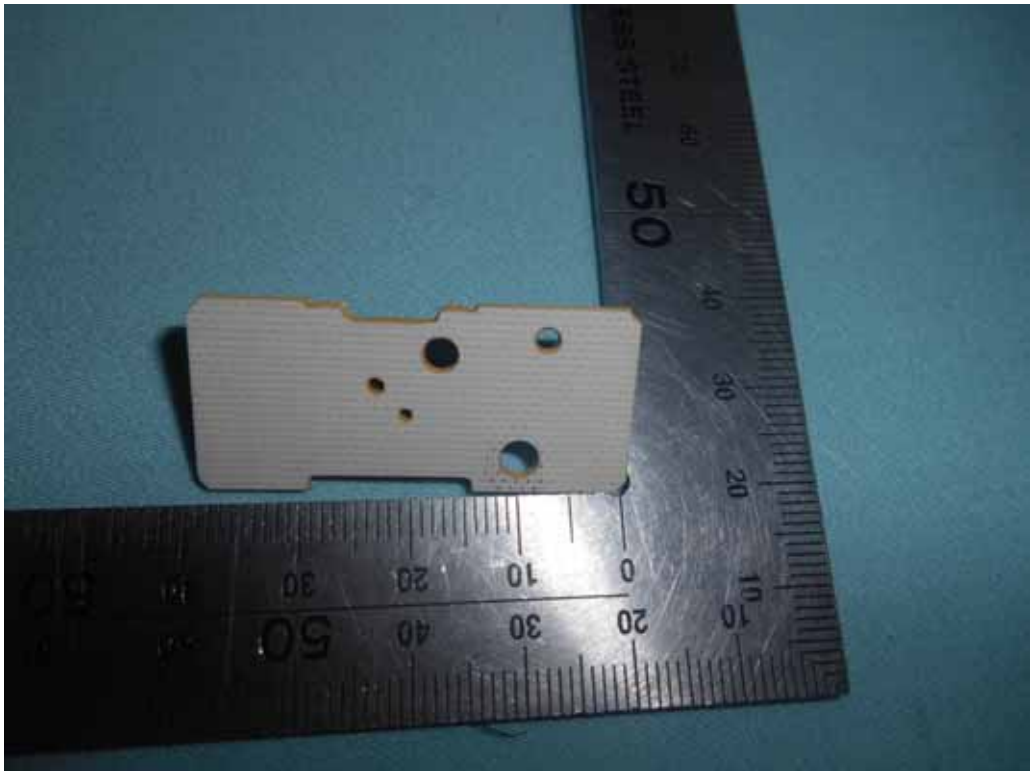




*FIGURE 17*  
*LED LCD TV (M/N: 50H8C)*  
*KEY BOARD (COMPONENT SIDE)*



*FIGURE 18*  
*LED LCD TV (M/N: 50H8C)*  
*KEY BOARD (SOLDERED SIDE)*



*FIGURE 19*  
*LED LCD TV (M/N: 50H8C)*  
*DEBUG*

