

FIGURE 1
LED LCD TV (M/N: 55H9D)
COVER REMOVED

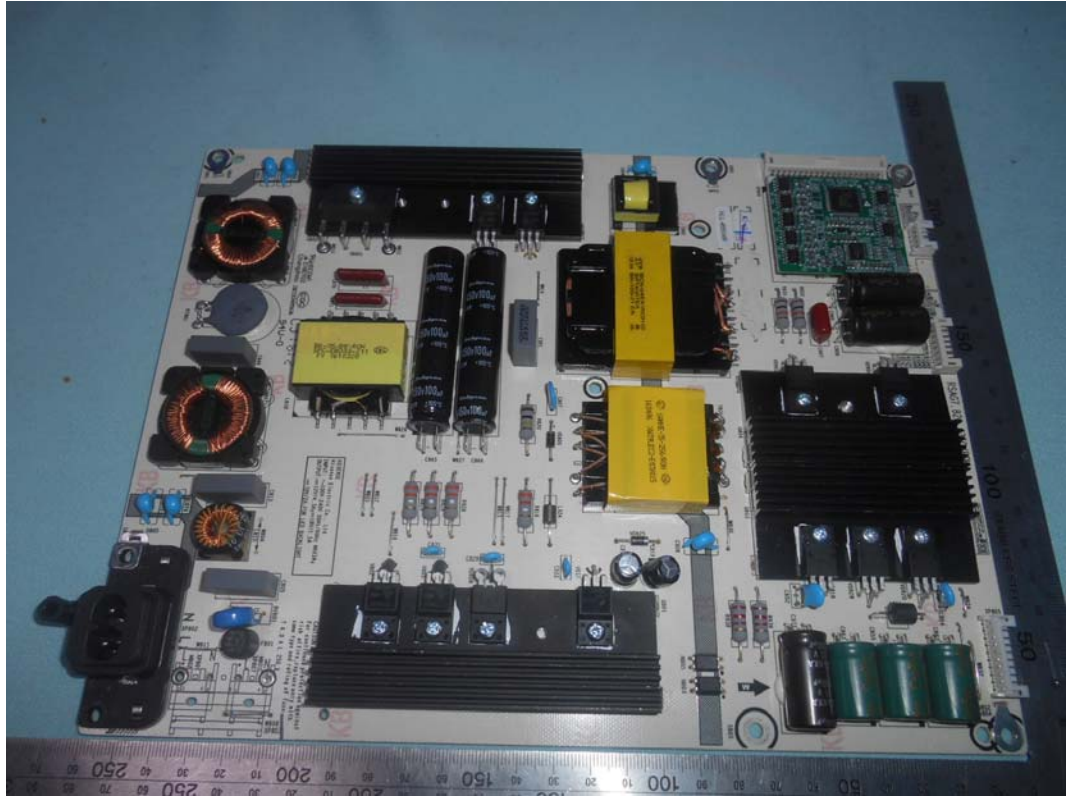


FIGURE 2
LED LCD TV (M/N: 55H9D)
LCD PANEL LABEL



FIGURE 3

*LED LCD TV (M/N: 55H9D)
POWER BOARD (COMPONENT SIDE)*



*FIGURE 4
LED LCD TV (M/N: 55H9D)
POWER BOARD (SOLDERED SIDE)*

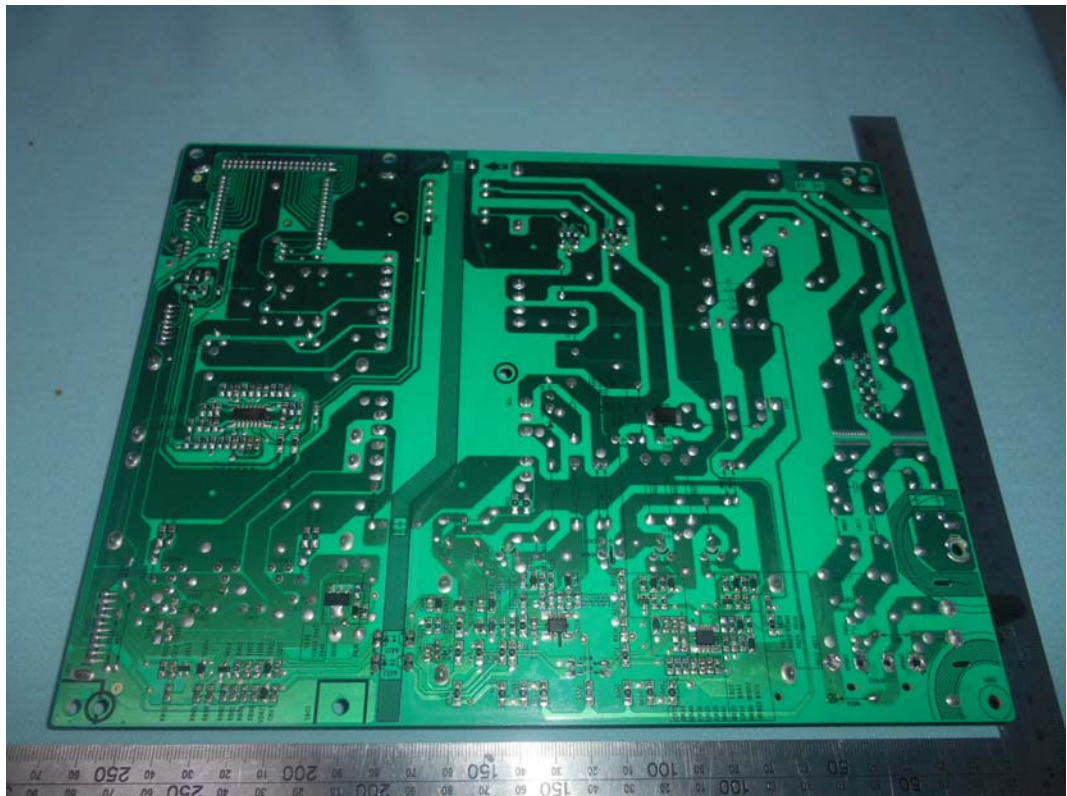


FIGURE 5
LED LCD TV (M/N: 55H9D)
IR BOARD (COMPONENT SIDE)

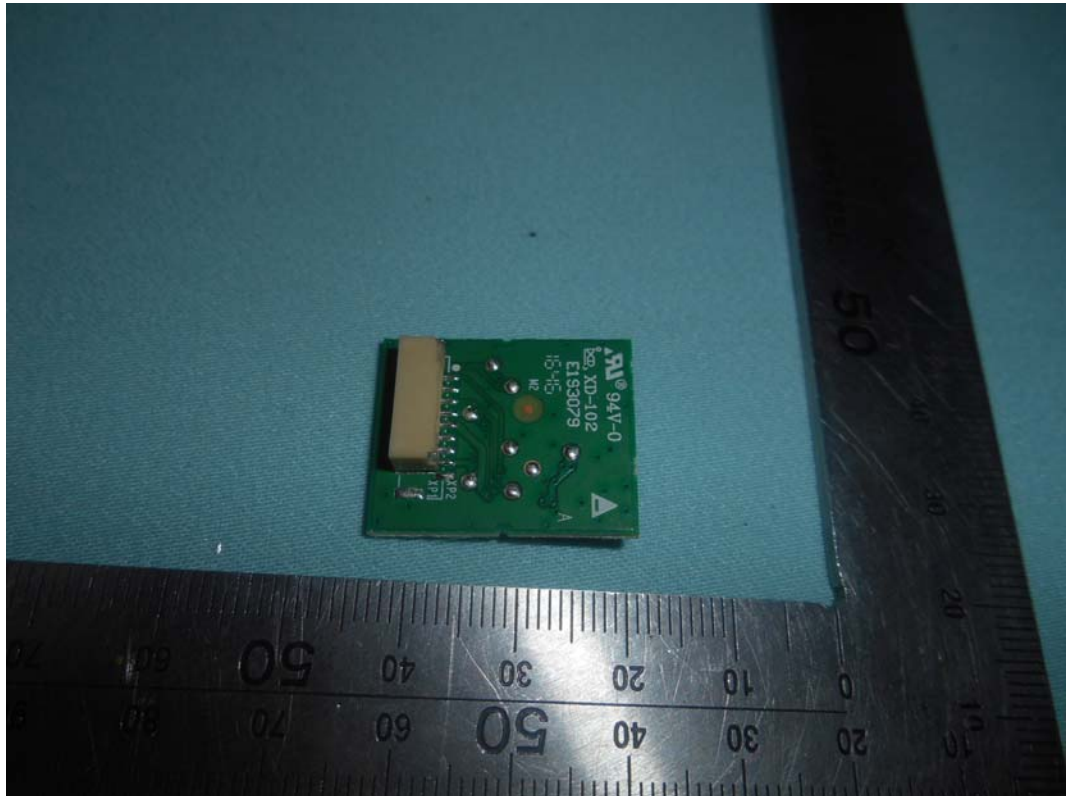
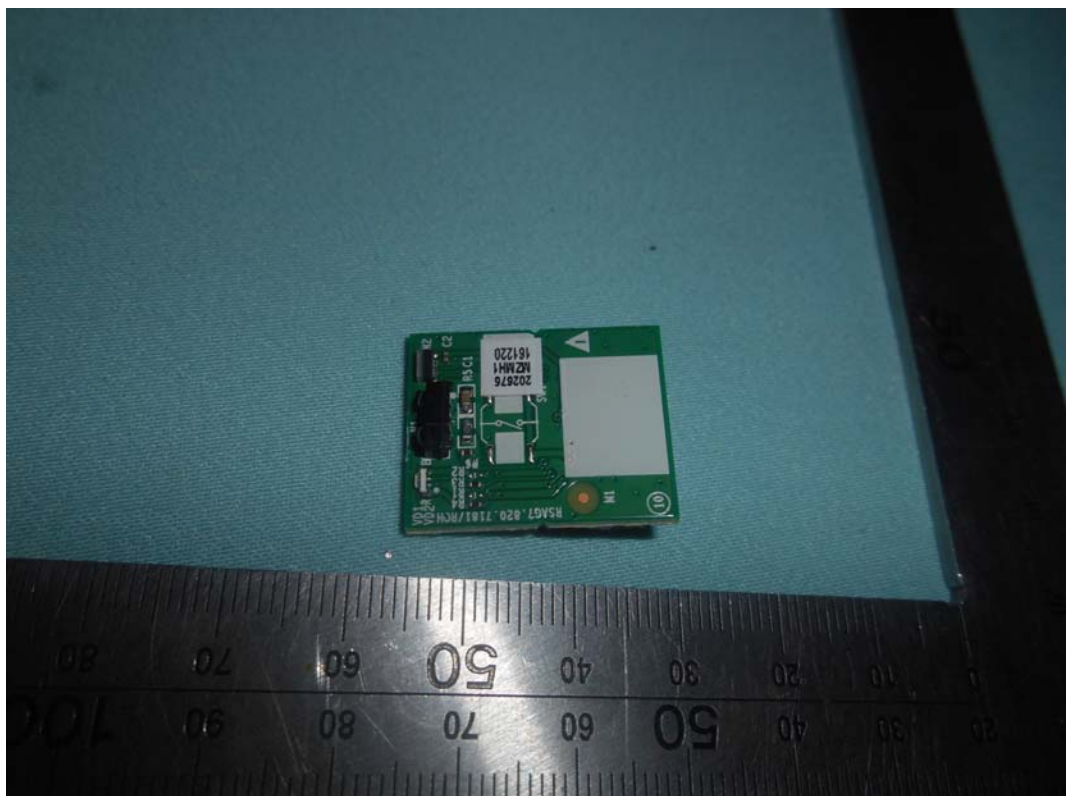
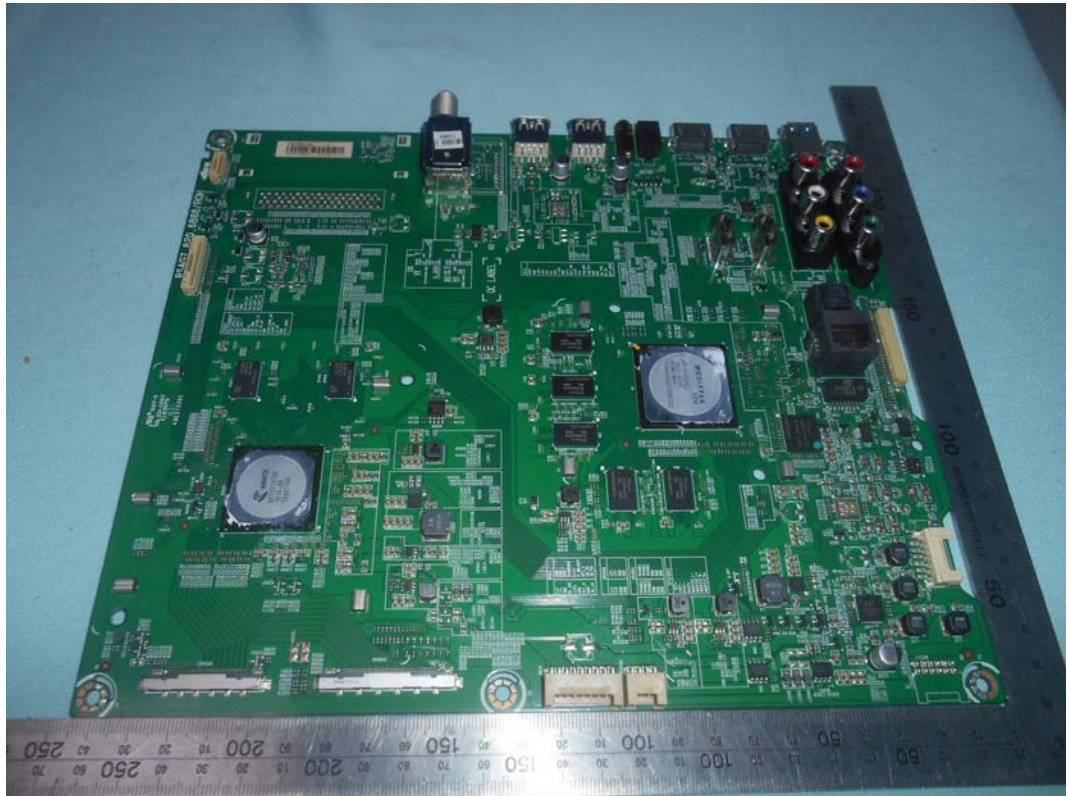


FIGURE 6
LED LCD TV (M/N: 55H9D)
IR BOARD (SOLDERED SIDE)



*FIGURE 7
LED LCD TV (M/N: 55H9D)
MAIN BOARD (COMPONENT SIDE)*



*FIGURE 8
LED LCD TV (M/N: 55H9D)
MAIN BOARD (SOLDERED SIDE)*

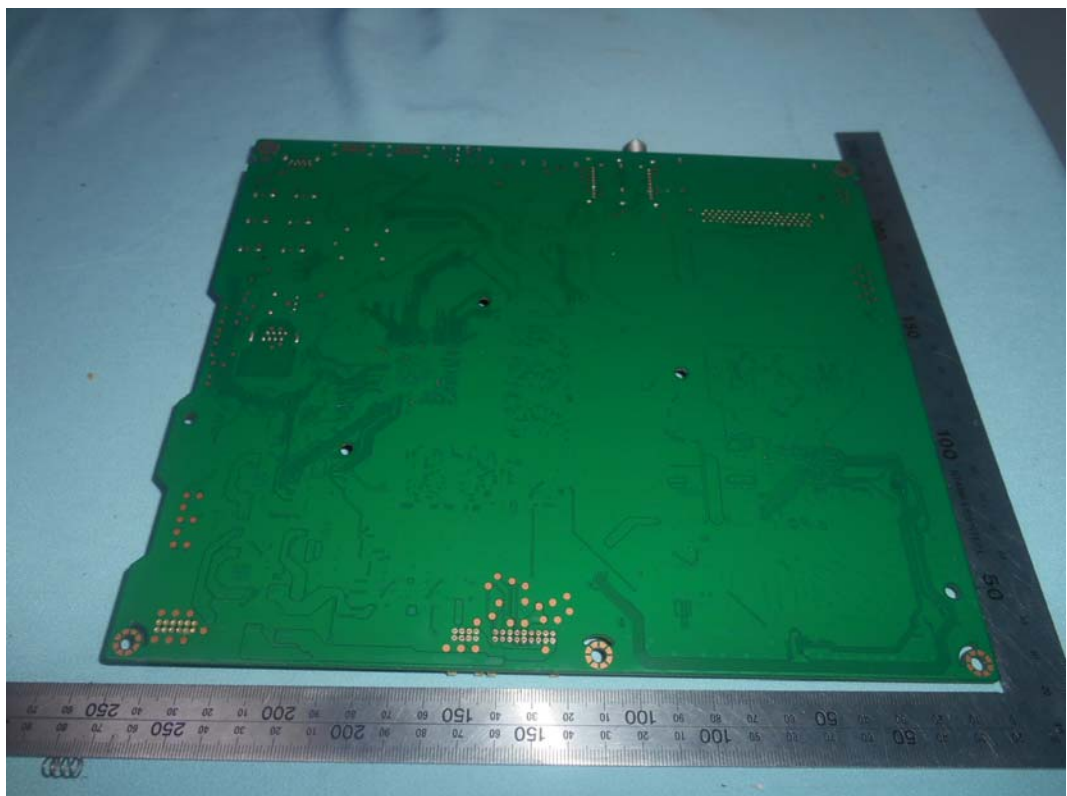


FIGURE 9
LED LCD TV(M/N: 55H9D)
CHIP#1 AND CRYSTAL#1 ON MAIN BOARD



FIGURE 10
LED LCD TV(M/N: 55H9D)
CHIP#2 AND CRYSTAL#2 ON MAIN BOARD

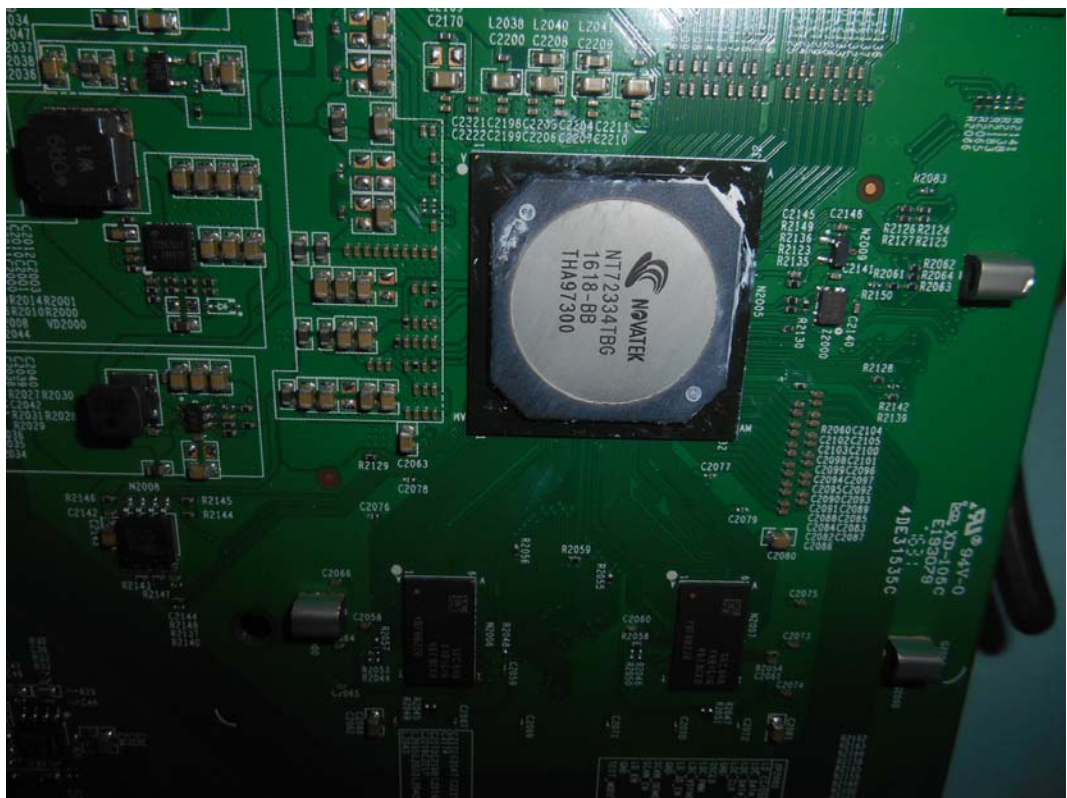
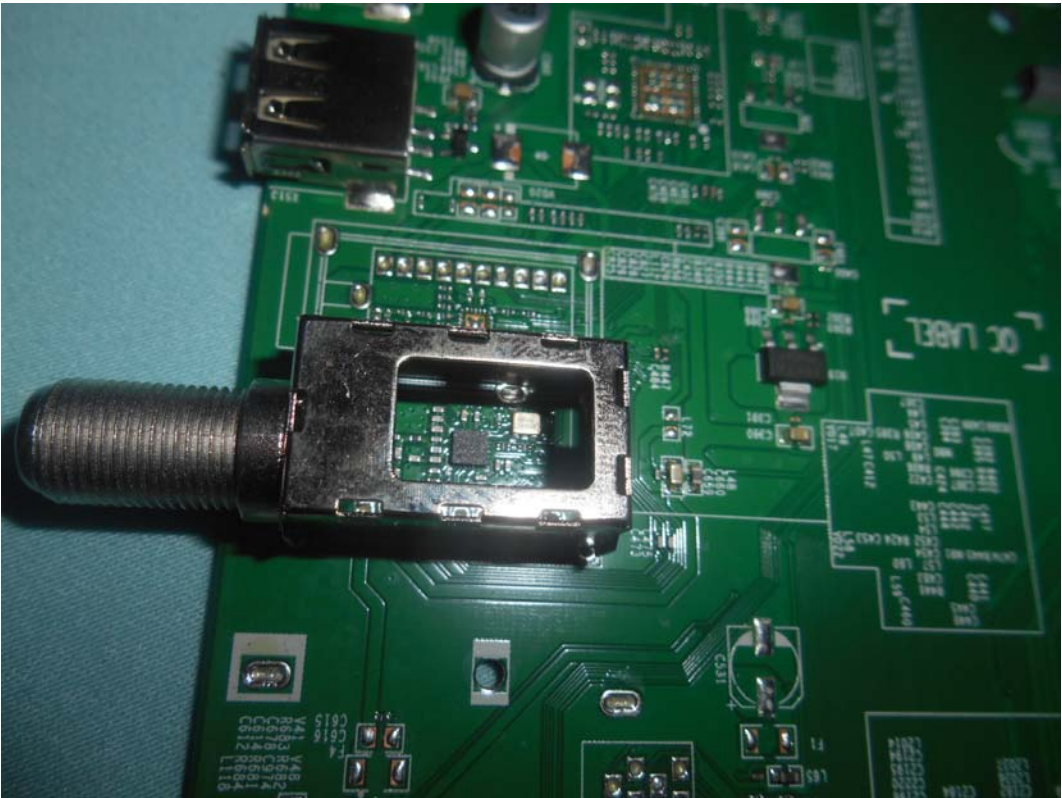


FIGURE 11
LED LCD TV (M/N: 55H9D)
TUNER



LED LCD TV (M/N: 55H9D)
KEY BOARD (COMPONENT SIDE)

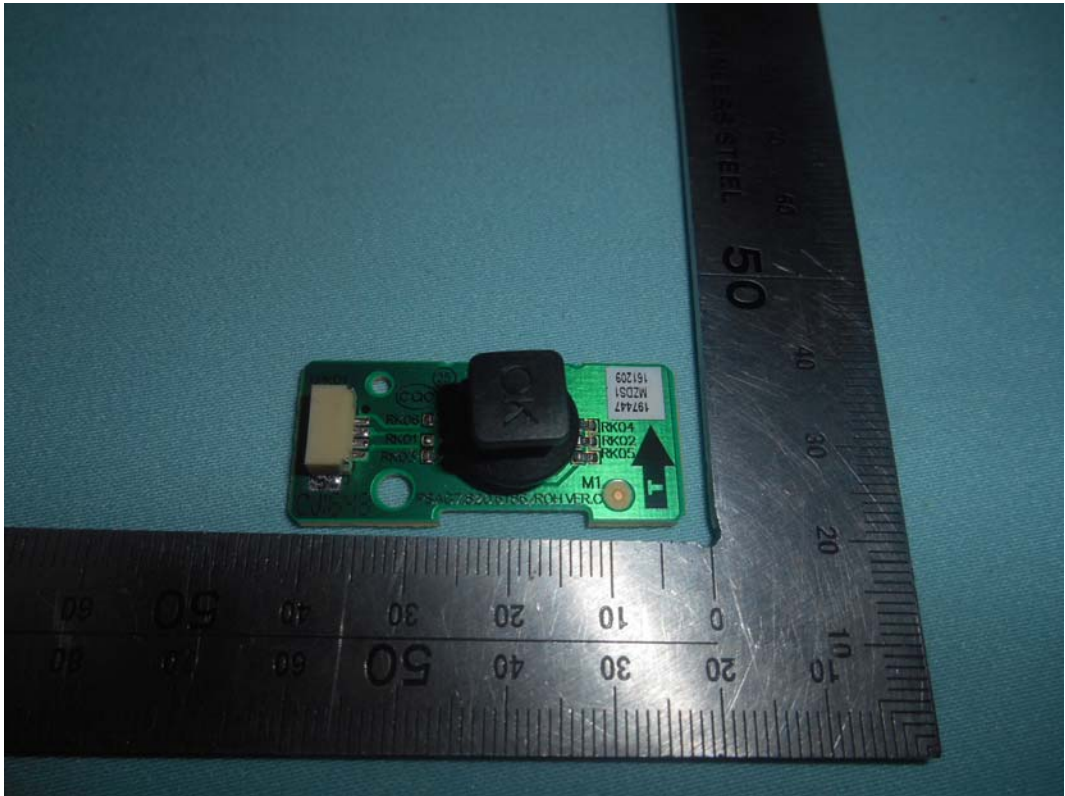


FIGURE 13
LED LCD TV (M/N: 55H9D)
KEY BOARD (SOLDERED SIDE)

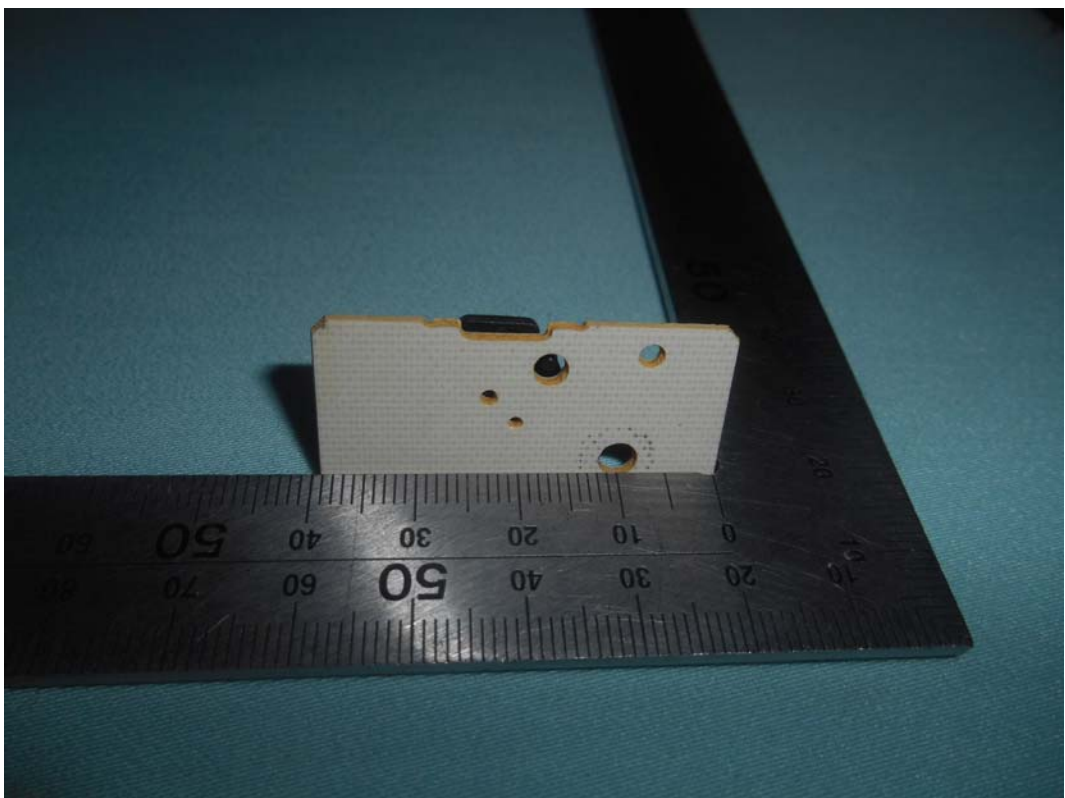


FIGURE 14
LED LCD TV (M/N: 55H9D)
RF BOARD (COMPONENT SIDE)



FIGURE 15
LED LCD TV (M/N: 55H9D)
RF BOARD (SOLDERED SIDE)

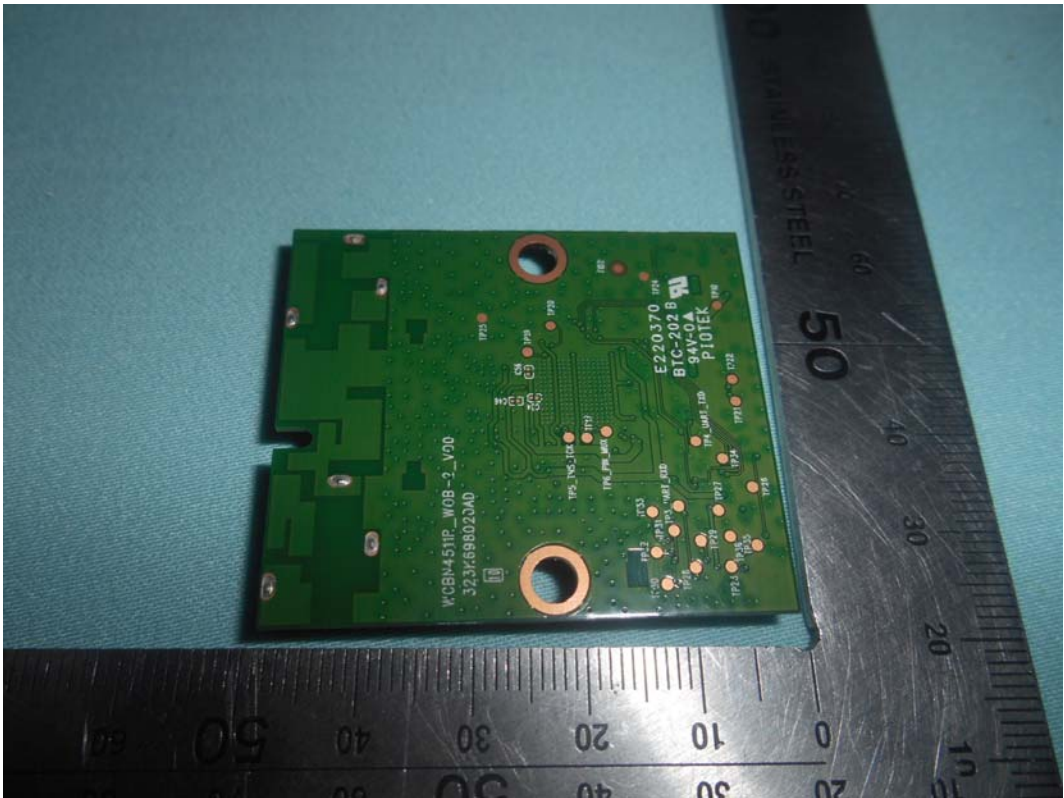


FIGURE 16
LED LCD TV (M/N: 55H9D)
RF LABEL



FIGURE 17
LED LCD TV (M/N: 55H9D)
CHIP AND CRYSTAL ON RF BOARD



FIGURE 18
LED LCD TV (M/N: 55H9D)
PANEL BOARD (COMPONENT SIDE)



FIGURE 19
LED LCD TV (M/N: 55H9D)
PANEL BOARD (SOLDERED SIDE)

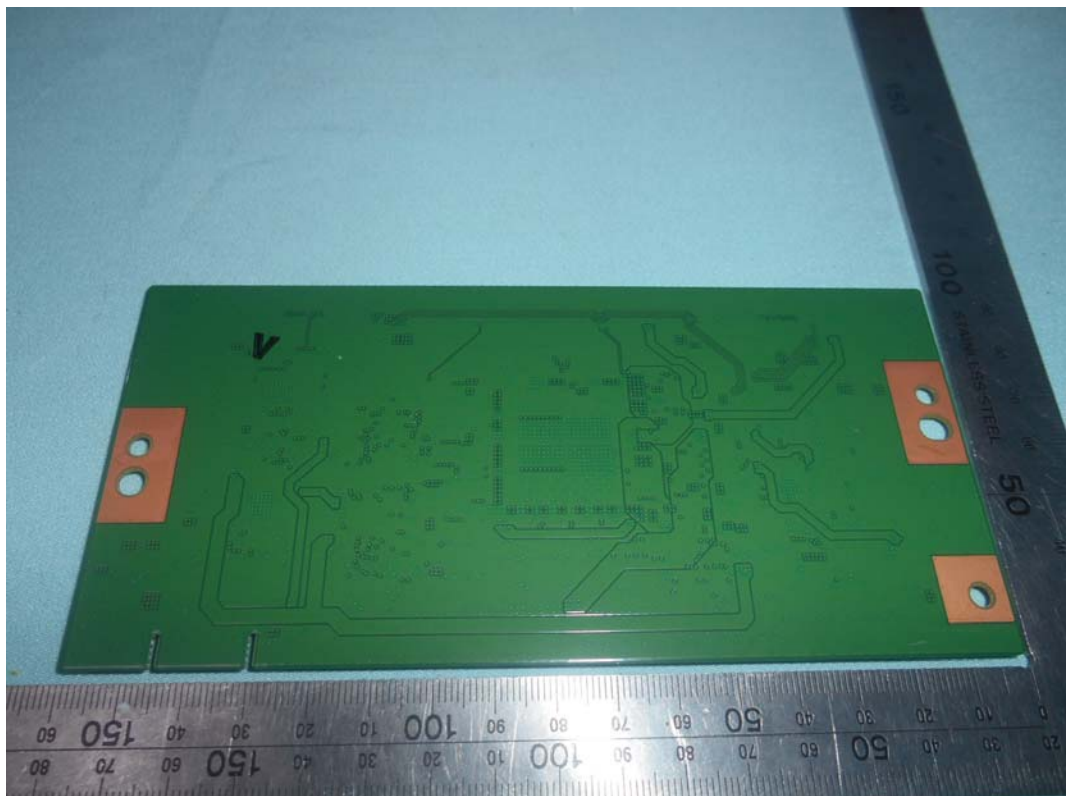


FIGURE 20
LED LCD TV(M/N: 55H9D)
CHIP AND CRYSTAL ON PANEL BOARD



FIGURE 21
LED LCD TV(M/N: 55H9D)
DEBUG#1

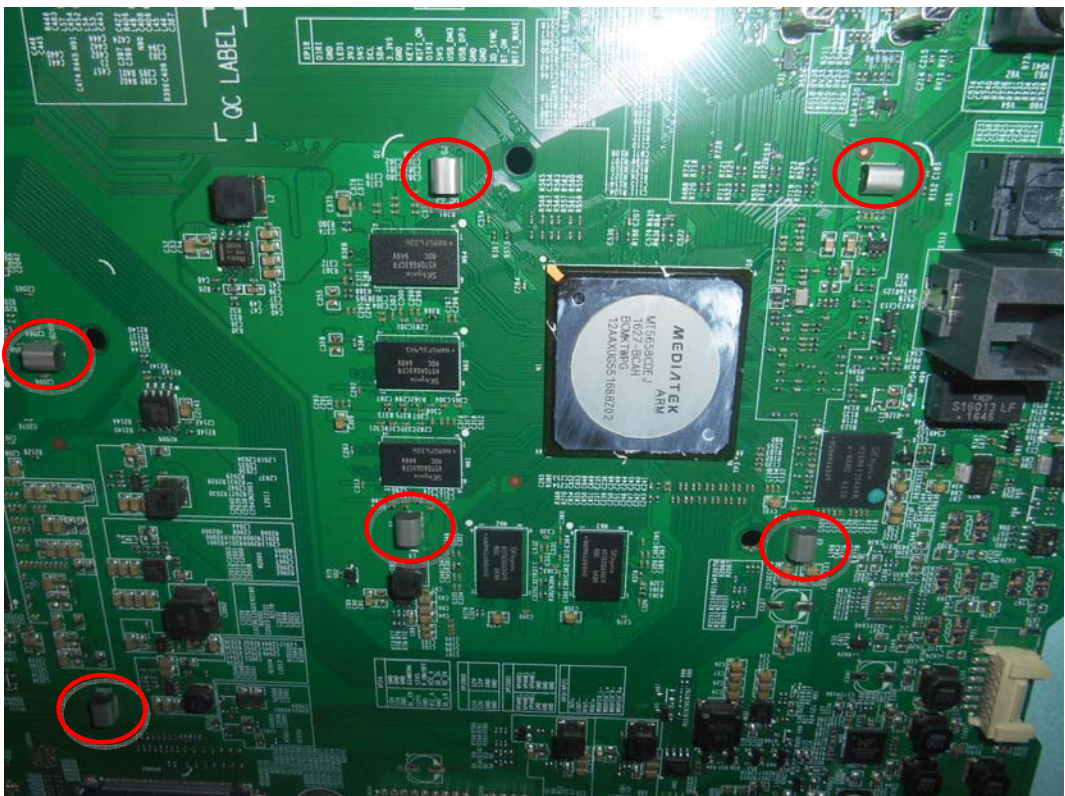


FIGURE 22
LED LCD TV (M/N: 55H9D)
DEBUG#2

