

FIGURE 1
LED LCD TV (M/N: 55H4D)
COVER REMOVED



FIGURE 2
LED LCD TV (M/N: 55H4D)
LCD PANEL LABEL



FIGURE 3
LED LCD TV (M/N: 55H4D)
MAIN BOARD (COMPONENT SIDE)



FIGURE 4
LED LCD TV (M/N: 55H4D)
MAIN BOARD (SOLDERED SIDE)

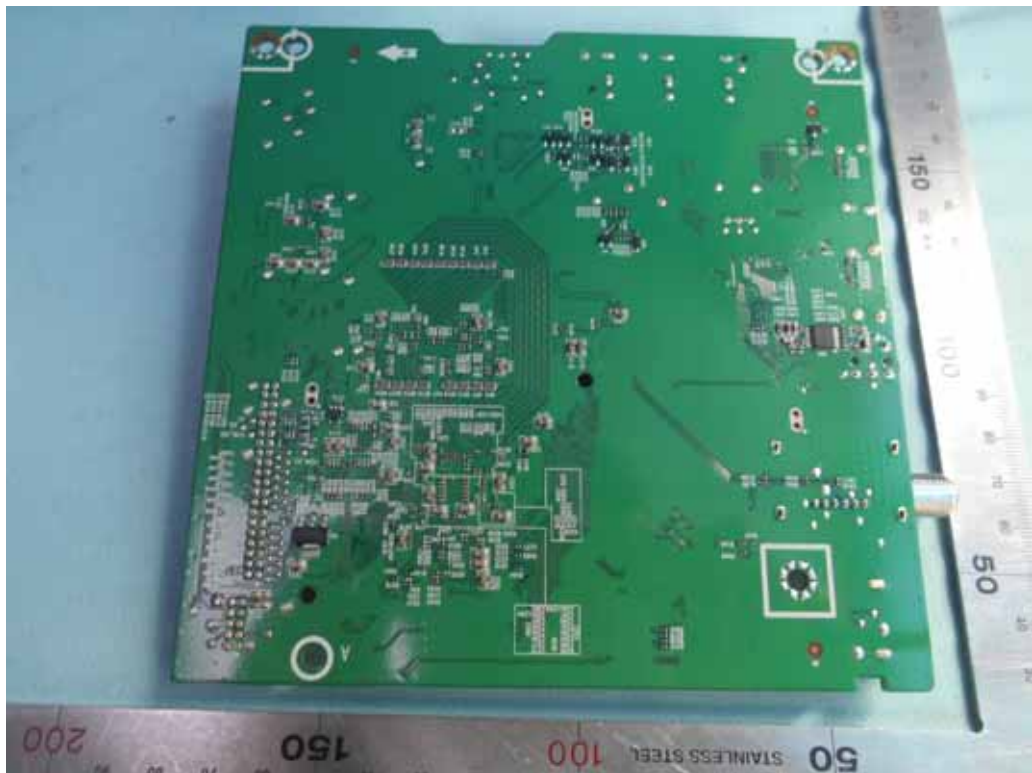


FIGURE 5
LED LCD TV (M/N: 55H4D)
CHIP & CRYSTAL ON MAIN BOARD



FIGURE 6
LED LCD TV (M/N: 55H4D)
TUNER



FIGURE 7
LED LCD TV (M/N: 55H4D)
RF BOARD (COMPONENT SIDE)



FIGURE 8
LED LCD TV (M/N: 55H4D)
RF BOARD (SOLDERED SIDE)

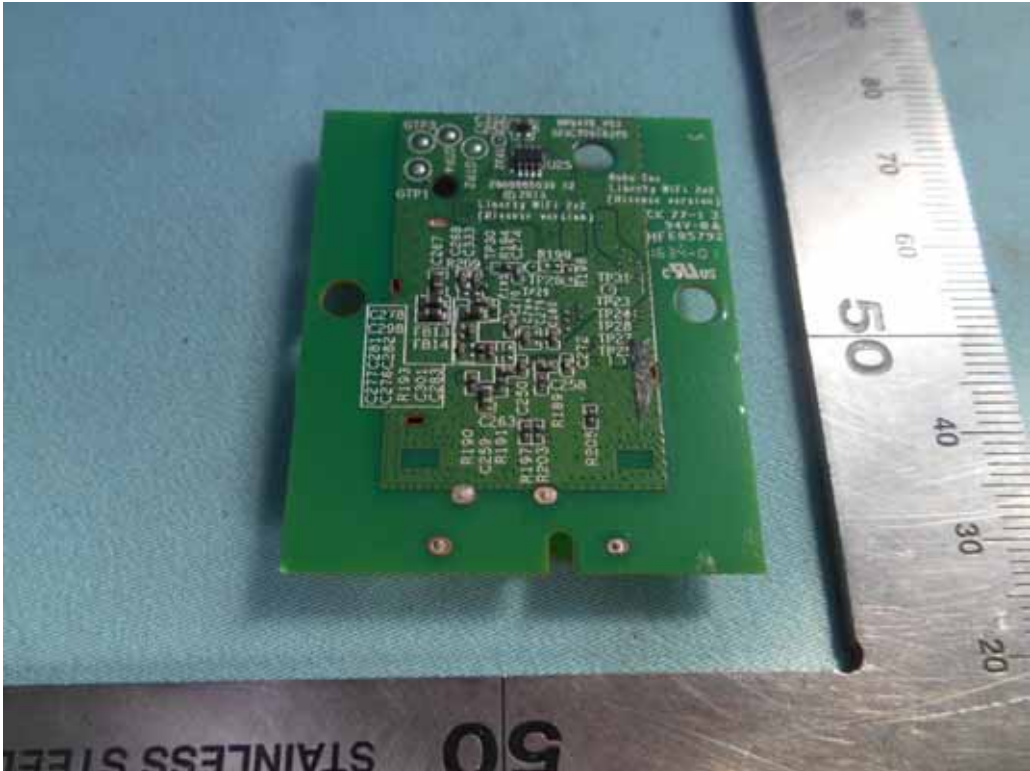


FIGURE 9
LED LCD TV (M/N: 55H4D)
RF LABEL



FIGURE 10
LED LCD TV (M/N: 55H4D)
POWER BOARD (COMPONENT SIDE)

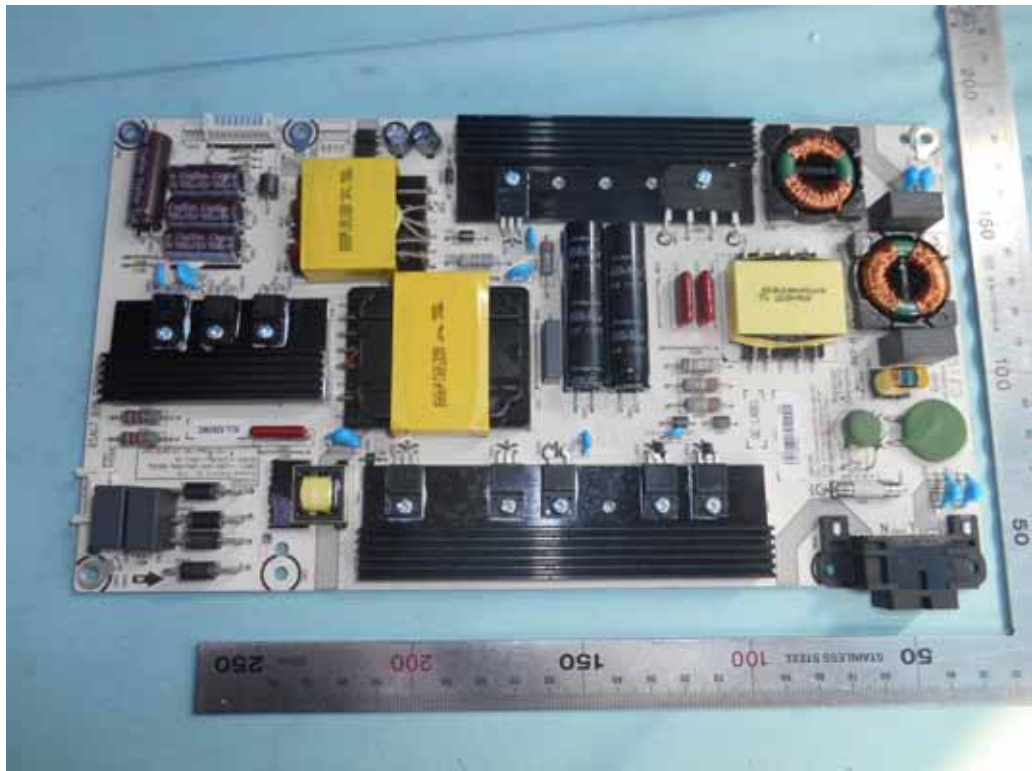


FIGURE 11
LED LCD TV (M/N: 55H4D)
POWER BOARD (SOLDERED SIDE)

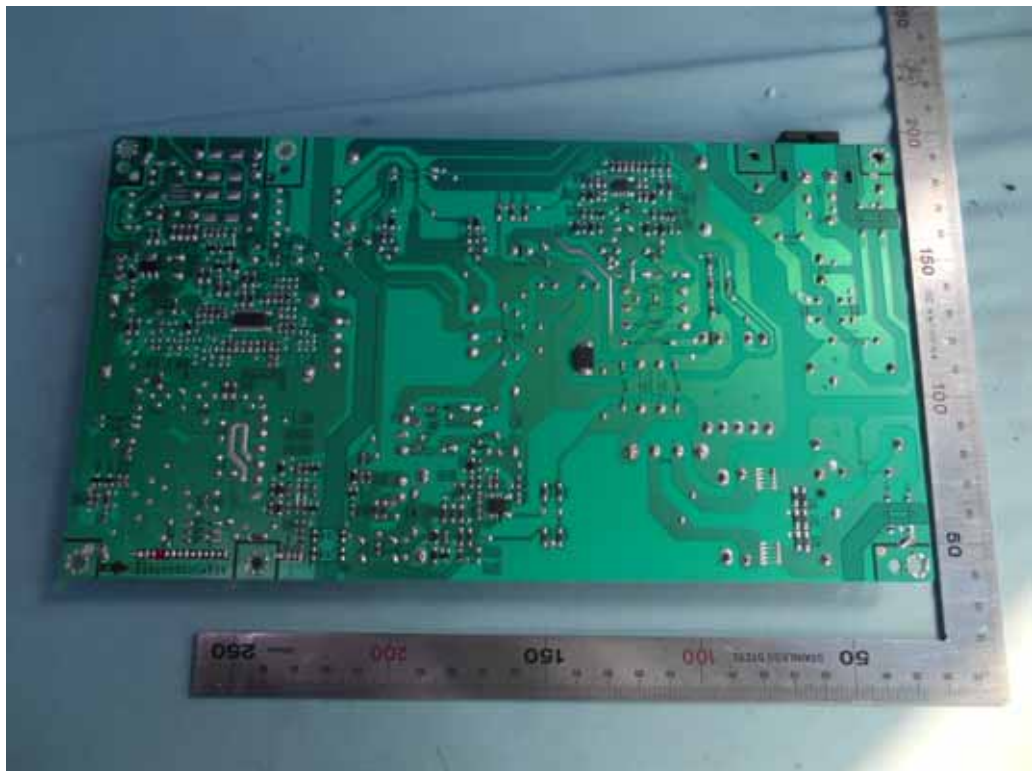


FIGURE 12
LED LCD TV (M/N: 55H4D)
AC BOARD (COMPONENT SIDE)

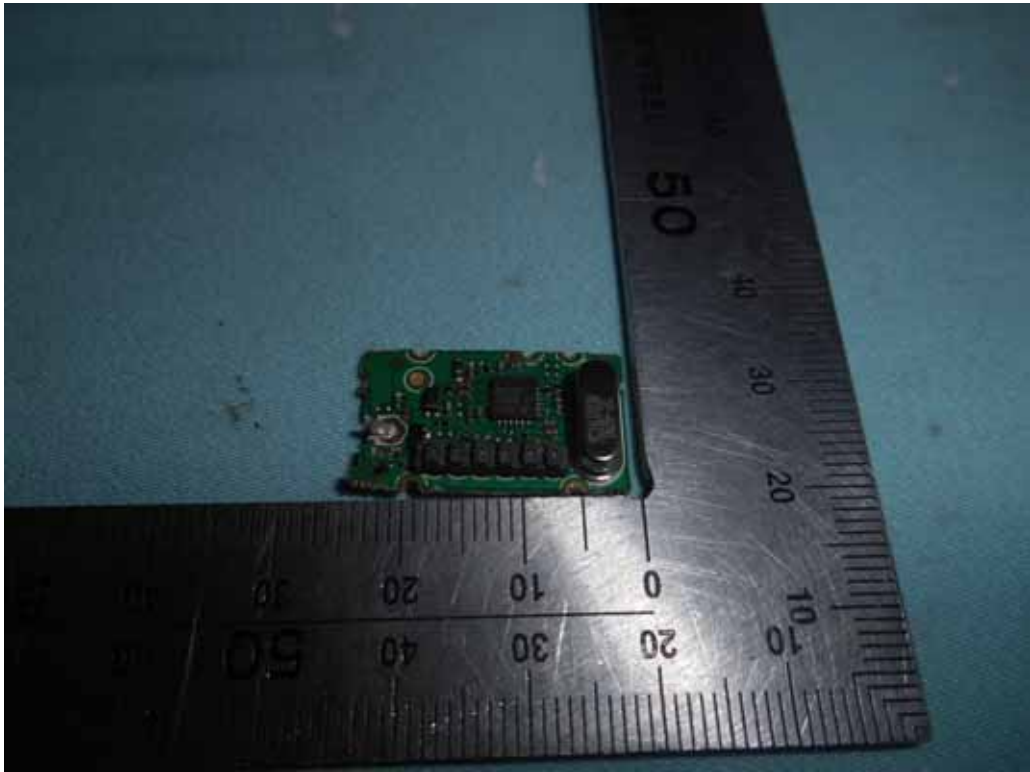


FIGURE 13
LED LCD TV (M/N: 55H4D)
AC BOARD (SOLDERED SIDE)

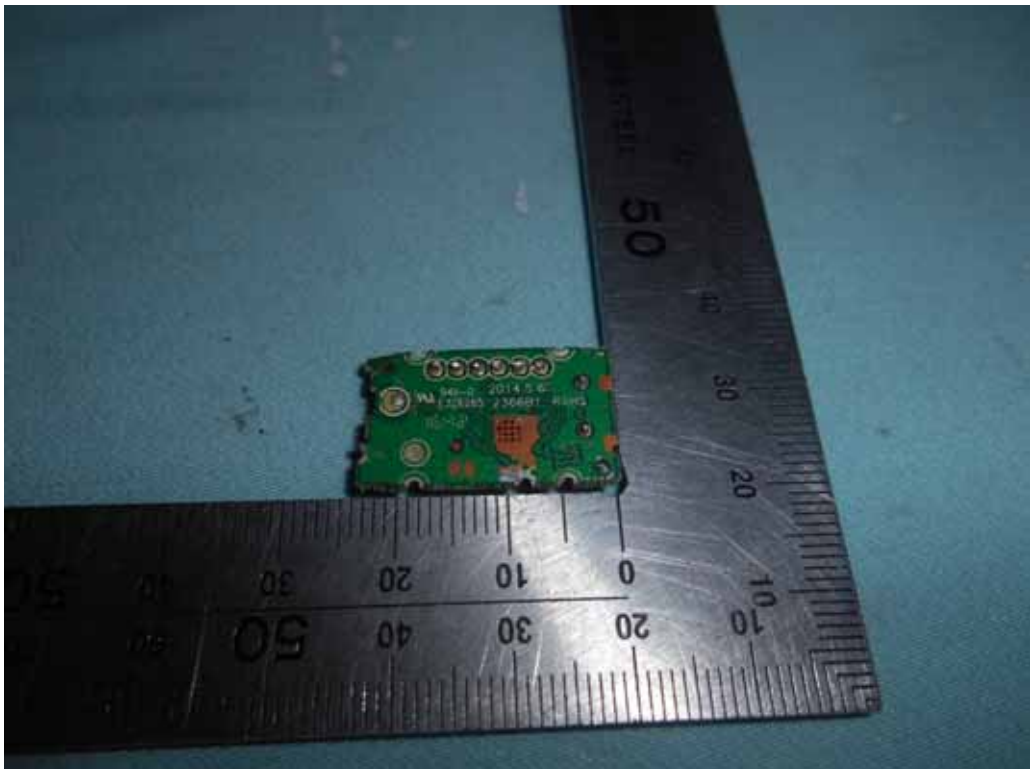


FIGURE 14
LED LCD TV (M/N: 55H4D)
KEY BOARD (COMPONENT SIDE)



FIGURE 15
LED LCD TV (M/N: 55H4D)
KEY BOARD (SOLDERED SIDE)

