

FIGURE 1
LED LCD TV (M/N: HU55N3000UW)
COVER REMOVED



FIGURE 2
LED LCD TV (M/N: HU55N3000UW)
PANEL LABEL



FIGURE 3
LED LCD TV (M/N: HU55N3000UW)
POWER BOARD (COMPONENT SIDE)

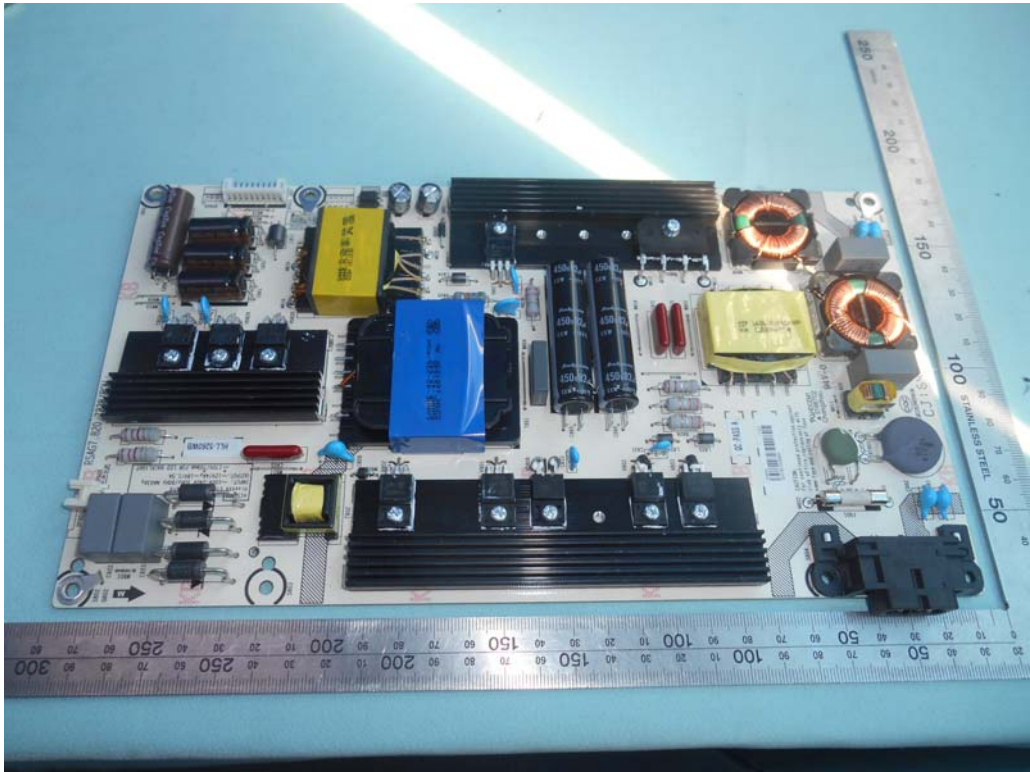


FIGURE 4
LED LCD TV (M/N: HU55N3000UW)
POWER BOARD (SOLDERED SIDE)

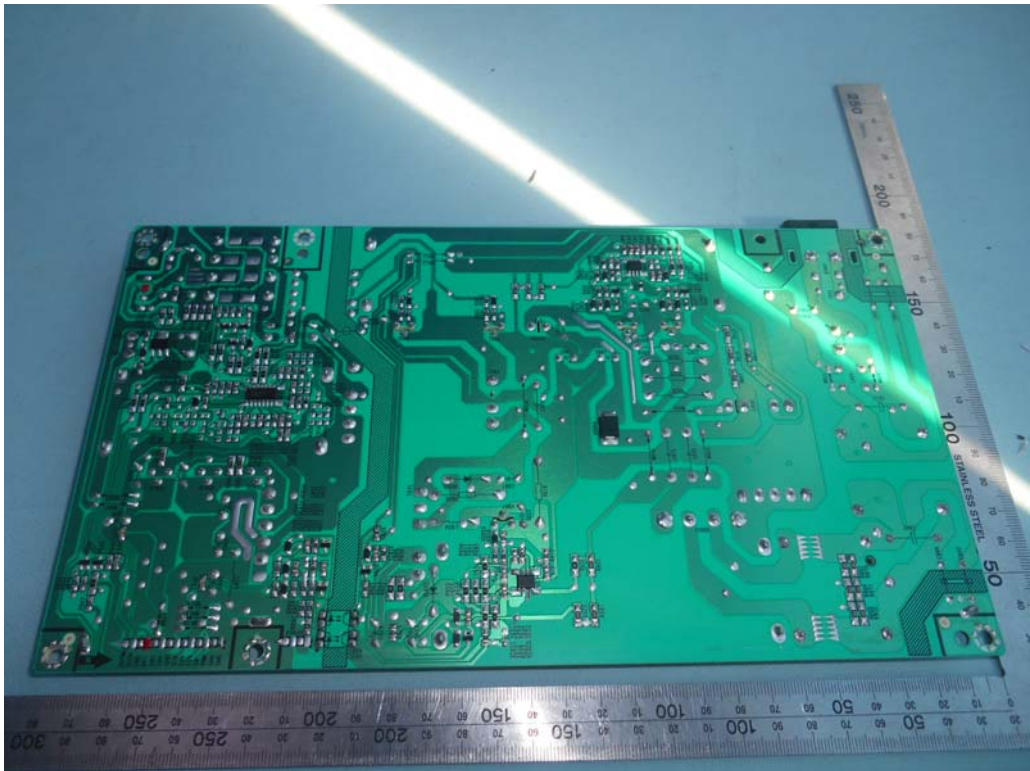


FIGURE 5
LED LCD TV (M/N: HU55N3000UW)
MAIN BOARD (COMPONENT SIDE)



FIGURE 6
LED LCD TV (M/N: HU55N3000UW)
MAIN BOARD (SOLDERED SIDE)

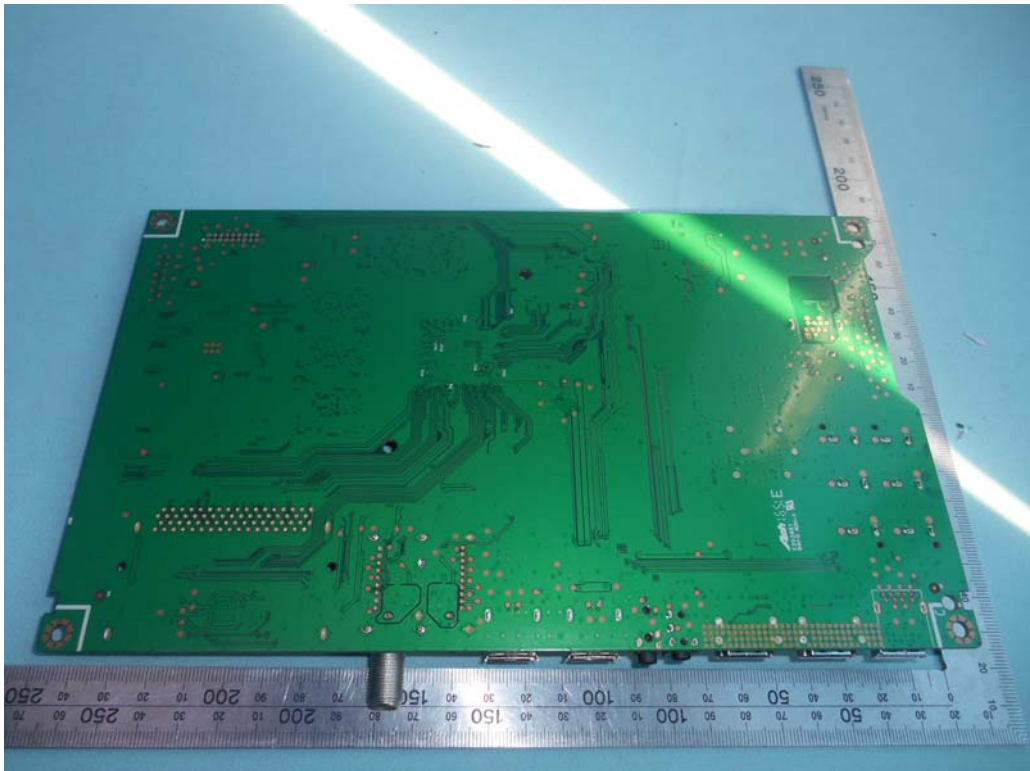


FIGURE 7
LED LCD TV (M/N: HU55N3000UW)
CHIP & CRYSTAL ON MAIN BOARD

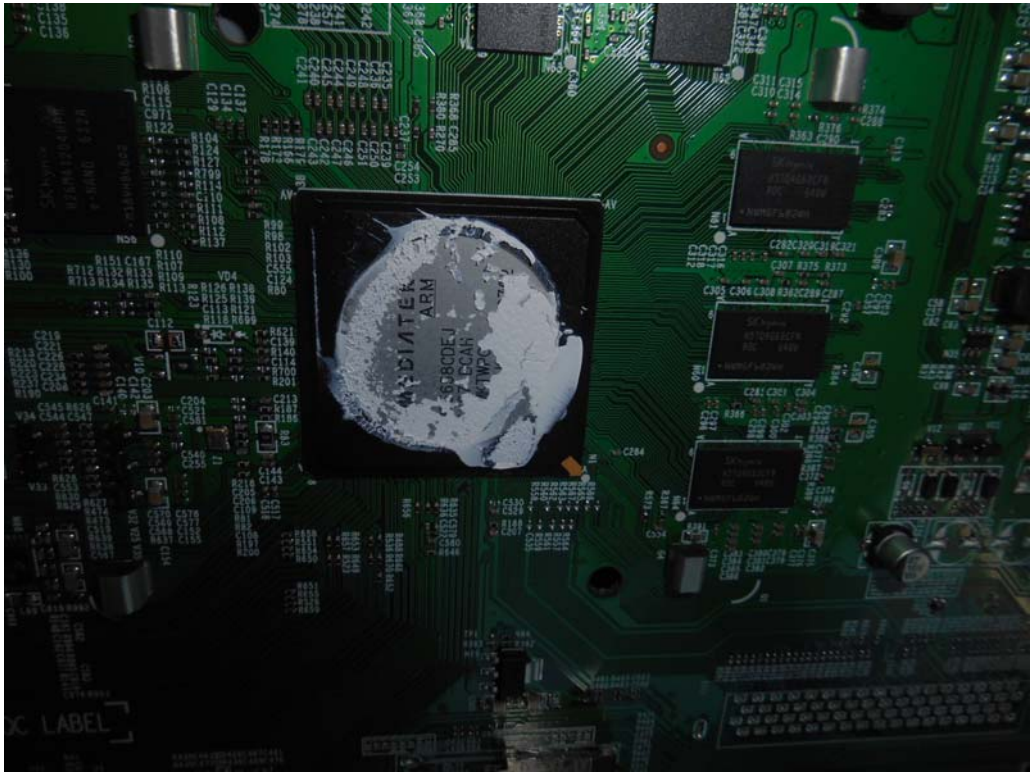


FIGURE 8
LED LCD TV (M/N: HU55N3000UW)
TUNER

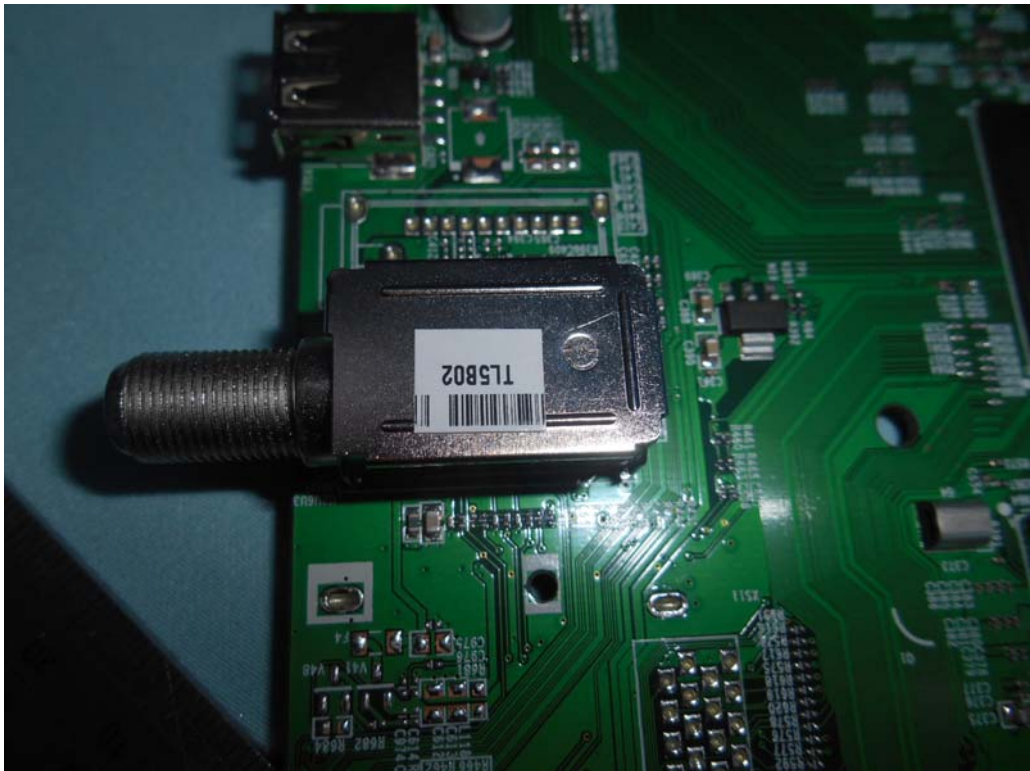


FIGURE 10
LED LCD TV (M/N: HU55N3000UW)
PANEL CONTROL BOARD (COMPONENT SIDE)

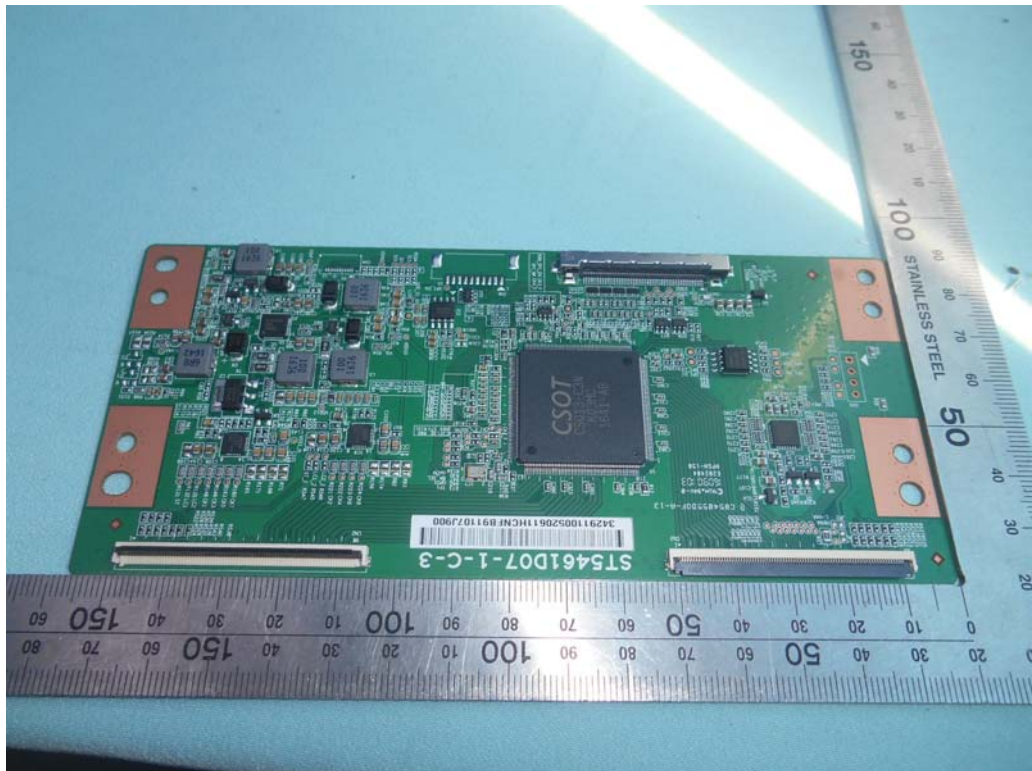


FIGURE 11
LED LCD TV (M/N: HU55N3000UW)
PANEL CONTROL BOARD (SOLDERED SIDE)

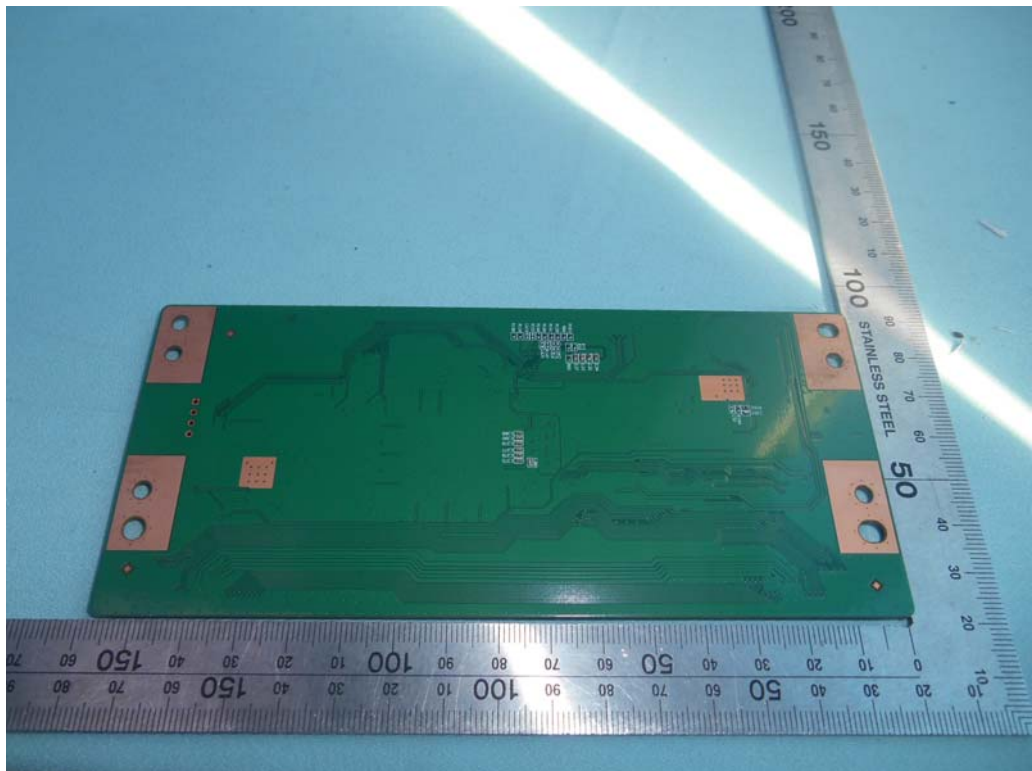


FIGURE 12
LED LCD TV (M/N: HU55N3000UW)
CHIP & CRYSTAL ON PANEL BOARD



FIGURE 13
LED LCD TV (M/N: HU55N3000UW)
RF BOARD (COMPONENT SIDE)



FIGURE 14
LED LCD TV (M/N: HU55N3000UW)
RF BOARD (SOLDERED SIDE)

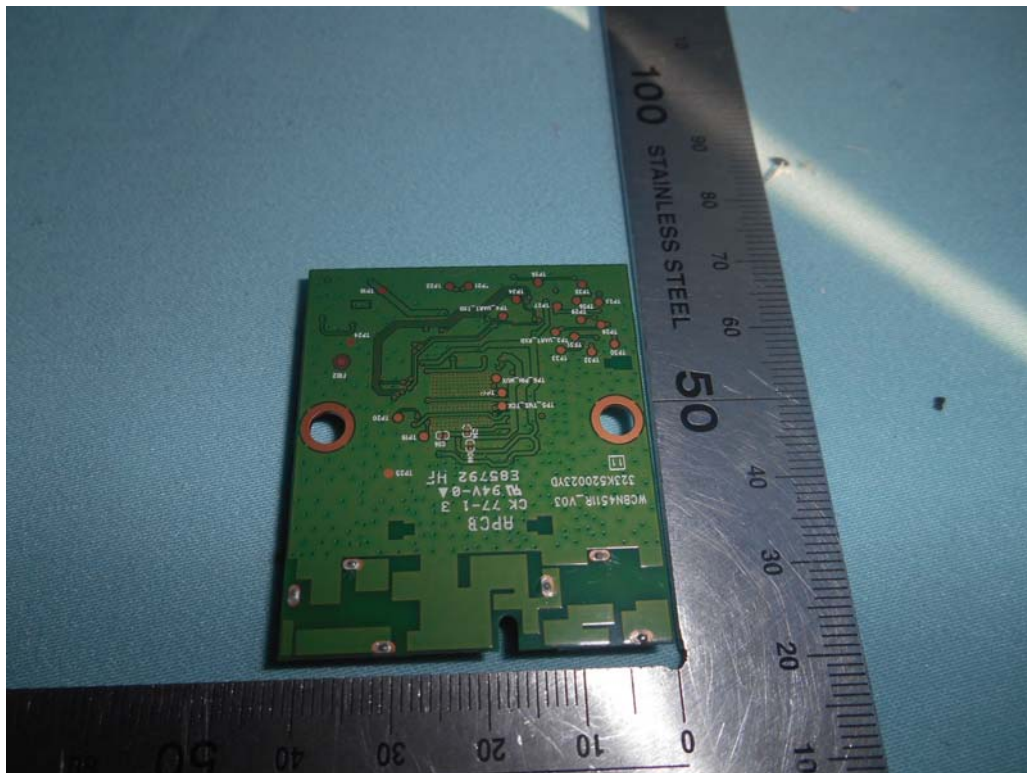


FIGURE 15
LED LCD TV (M/N: HU55N3000UW)
RF BOARD LABEL



FIGURE 16
LED LCD TV (M/N: HU55N3000UW)
RF BOARD COVER REMOVED

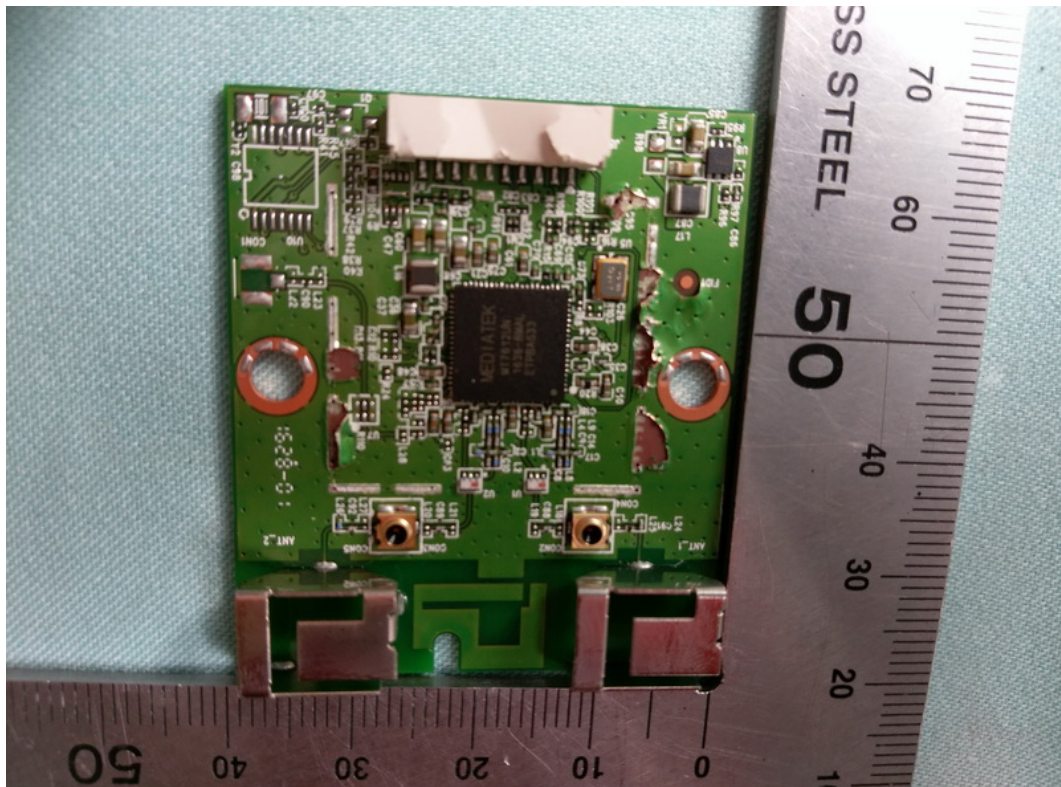


FIGURE 21
LED LCD TV (M/N: HU55N3000UW)
DEBUG #1

