

*FIGURE 1*  
*LED LCD TV (M/N: LC-55P8000U)*  
*COVER REMOVED*



*FIGURE 2*  
*LED LCD TV (M/N: LC-55P8000U)*  
*LCD PANEL LABEL*



*FIGURE 3*  
*LED LCD TV (M/N: LC-55P8000U)*  
*MAIN BOARD (COMPONENT SIDE)*



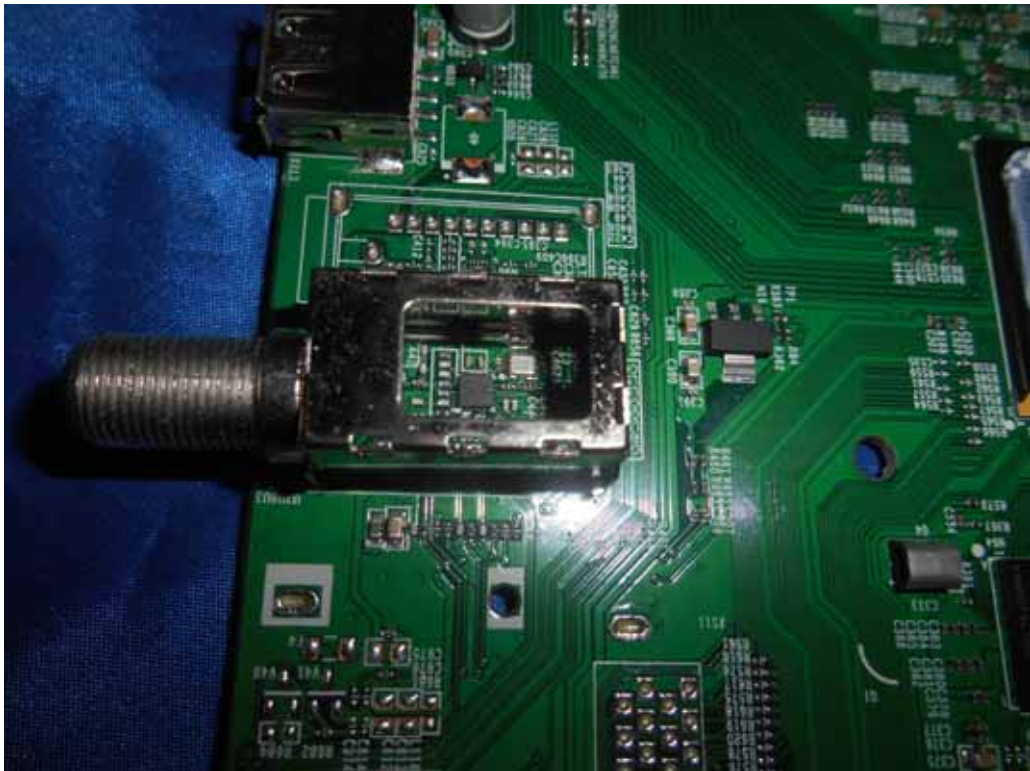
*FIGURE 4*  
*LED LCD TV (M/N: LC-55P8000U)*  
*MAIN BOARD (SOLDERED SIDE)*



*FIGURE 5  
LED LCD TV (M/N: LC-55P8000U)  
CHIP AND CRYSTAL ON MAIN BOARD*



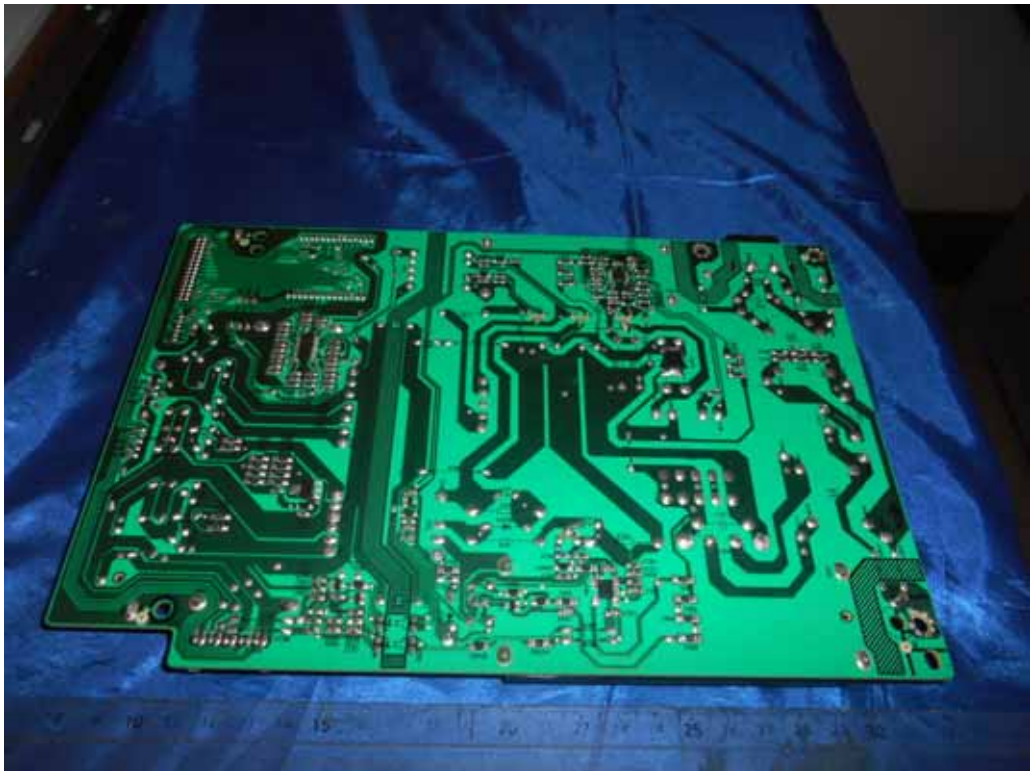
*FIGURE 6  
LED LCD TV (M/N: LC-55P8000U)  
TUNER*



*FIGURE 7*  
*LED LCD TV (M/N: LC-55P8000U)*  
*POWER BOARD (COMPONENT SIDE)*



*FIGURE 8*  
*LED LCD TV (M/N: LC-55P8000U)*  
*POWER BOARD (SOLDERED SIDE)*



*FIGURE 9*  
*LED LCD TV (M/N: LC-55P8000U)*  
*PANEL BOARD (COMPONENT SIDE)*



*FIGURE 10*  
*LED LCD TV (M/N: LC-55P8000U)*  
*PANEL BOARD (SOLDERED SIDE)*



FIGURE 11  
LED LCD TV (M/N: LC-55P8000U)  
CHIP AND CRYSTAL ON PANEL BOARD



FIGURE 12  
LED LCD TV (M/N: LC-55P8000U)  
IR BOARD (COMPONENT SIDE)



FIGURE 13  
LED LCD TV (M/N: LC-55P8000U)  
IR BOARD (SOLDERED SIDE)

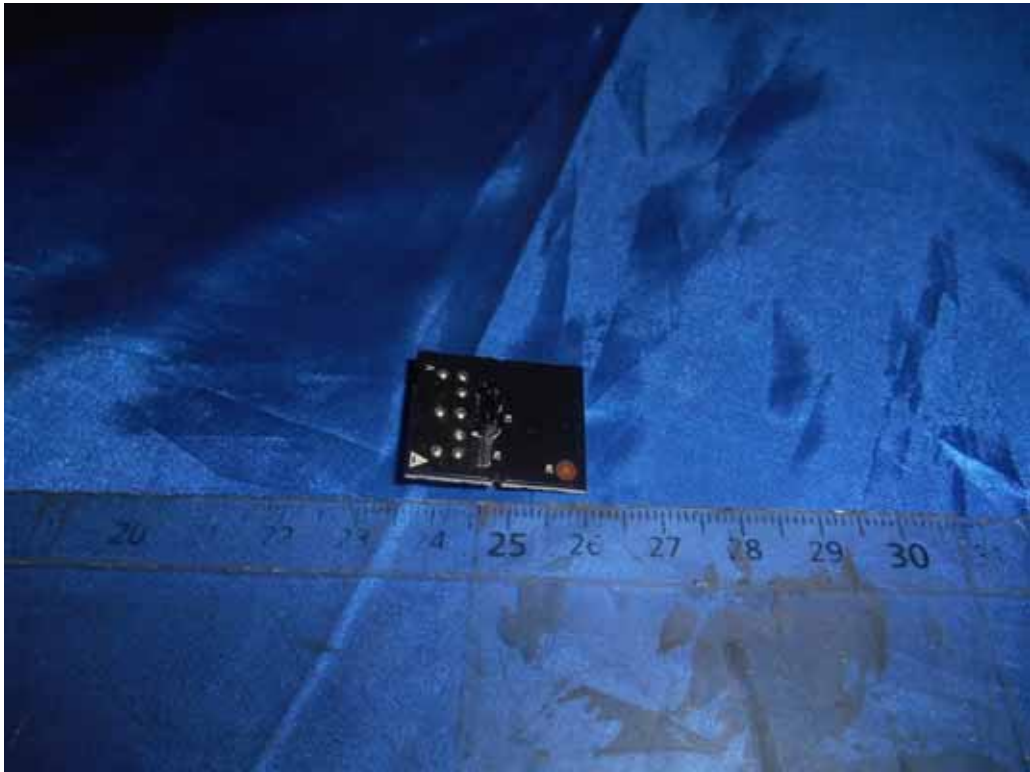
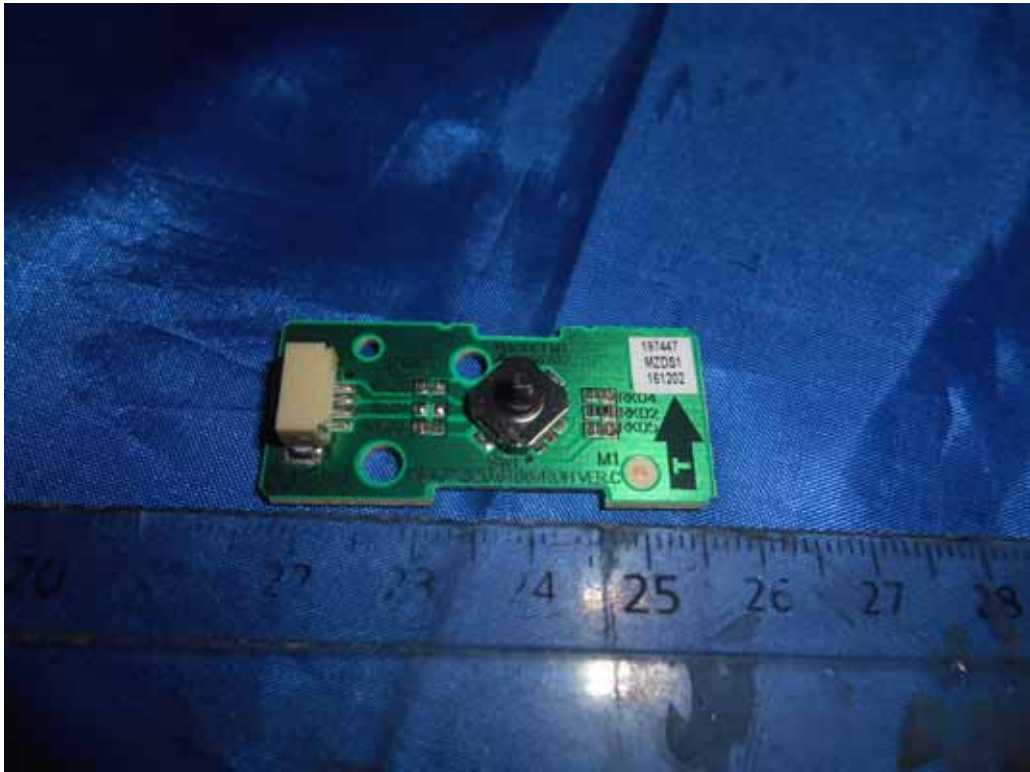


FIGURE 14  
LED LCD TV (M/N: LC-55P8000U)  
CHIP AND CRYSTAL ON IR BOARD



*FIGURE 15*  
*LED LCD TV (M/N: LC-55P8000U)*  
*KEYBOARD (COMPONENT SIDE)*



*FIGURE 16*  
*LED LCD TV (M/N: LC-55P8000U)*  
*KEYBOARD (SOLDERED SIDE)*





FIGURE 17  
LED LCD TV (M/N: LC-55P8000U)  
RF BOARD (COMPONENT SIDE)



FIGURE 18  
LED LCD TV (M/N: LC-55P8000U)  
RF BOARD (SOLDERED SIDE)



FIGURE 19  
LED LCD TV (M/N: LC-55P8000U)  
RF LABEL



FIGURE 20  
LED LCD TV (M/N: LC-55P8000U)  
DEBUG

