

*FIGURE 1*  
*LED LCD TV (M/N: 50H5C)*  
*COVER REMOVED*



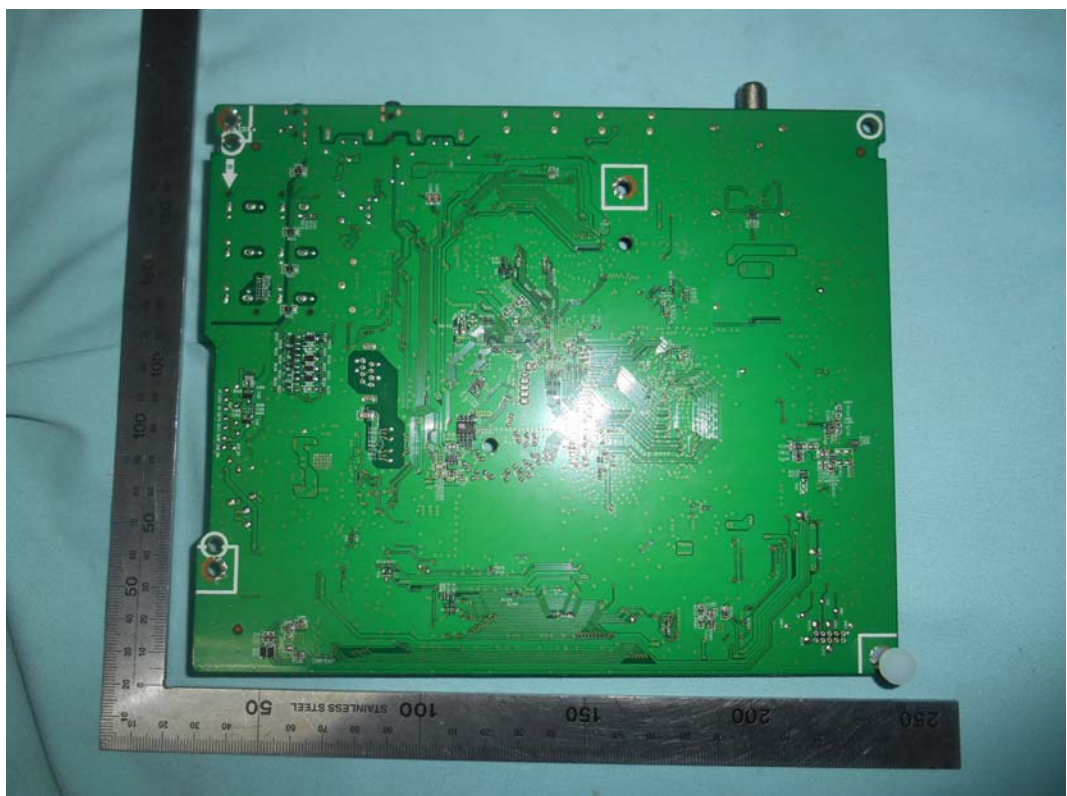
*FIGURE 2*  
*LED LCD TV (M/N: 50H5C)*  
*LCD PANEL LABEL*



*FIGURE 3*  
*LED LCD TV (M/N: 50H5C)*  
*MAIN BOARD (COMPONENT SIDE)*



*FIGURE 4*  
*LED LCD TV (M/N: 50H5C)*  
*MAIN BOARD (SOLDERED SIDE)*





*FIGURE 5*  
*LED LCD TV (M/N: 50H5C)*  
*CHIP AND CRYSTAL ON MAIN BOARD*



*FIGURE 6*  
*LED LCD TV (M/N: 50H5C)*  
*TUNER*



*FIGURE 7*  
*LED LCD TV (M/N: 50H5C)*  
*RF BOARD (COMPONENT SIDE)*



*FIGURE 8*  
*LED LCD TV (M/N: 50H5C)*  
*RF BOARD (SOLDERED SIDE)*

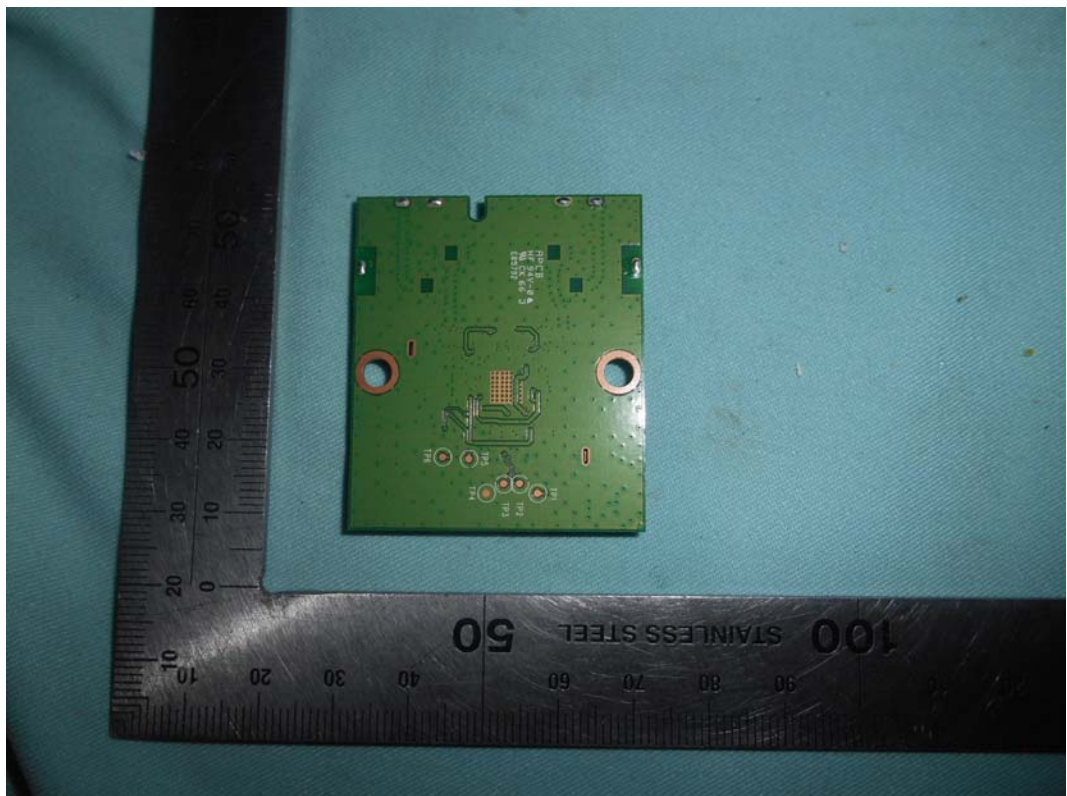




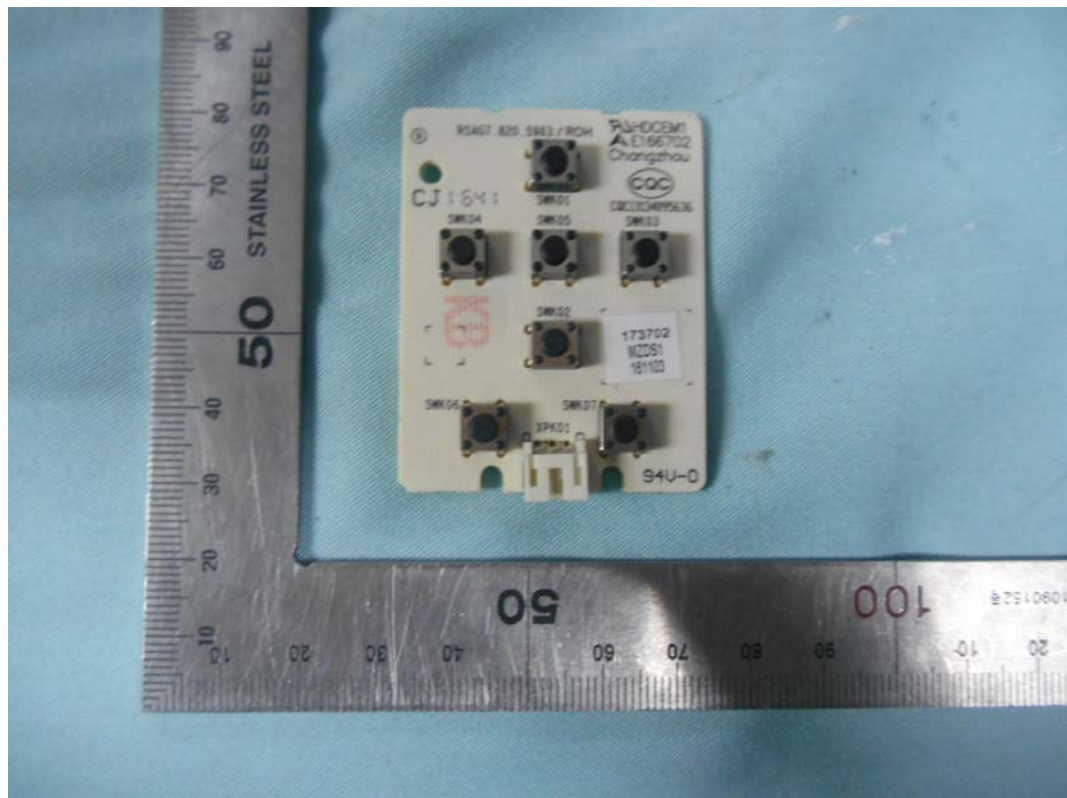
FIGURE 9  
LED LCD TV (M/N: 50H5C)  
RF BOARD LABEL



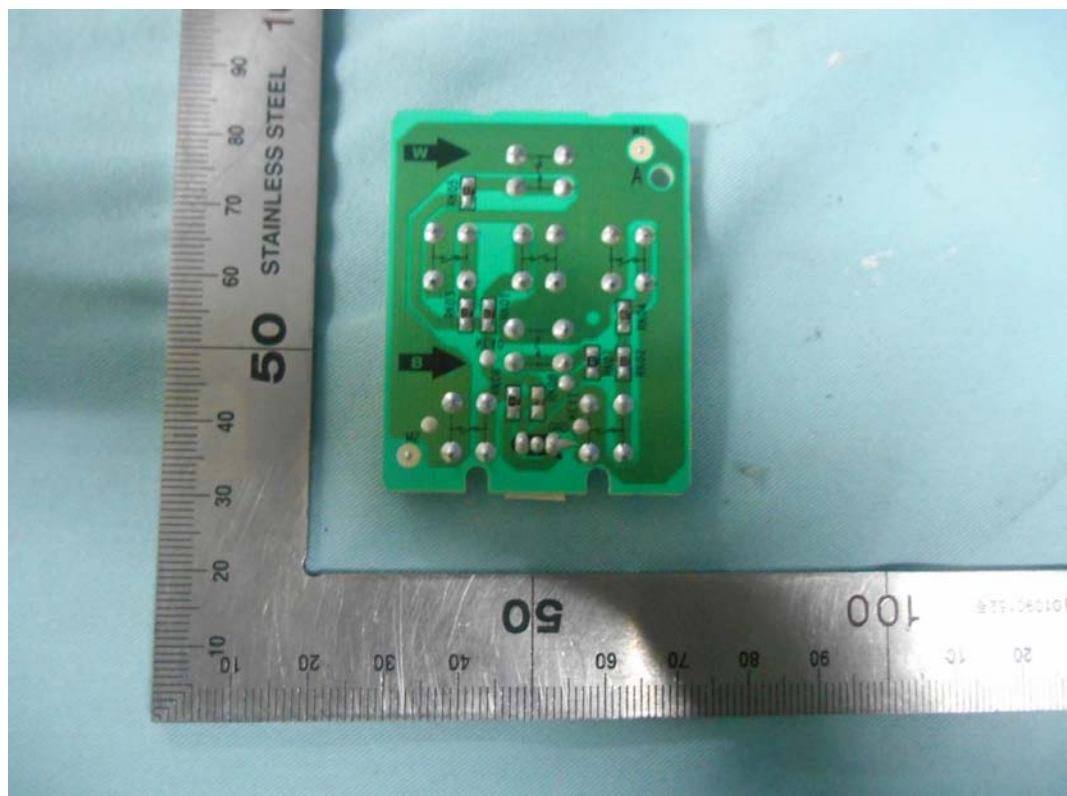
FIGURE 10  
LED LCD TV (M/N: 50H5C)  
CHIP AND CRYSTAL ON RF BOARD



**FIGURE 11**  
**LED LCD TV (M/N: 50H5C)**  
**KEY BOARD (COMPONENT SIDE)**

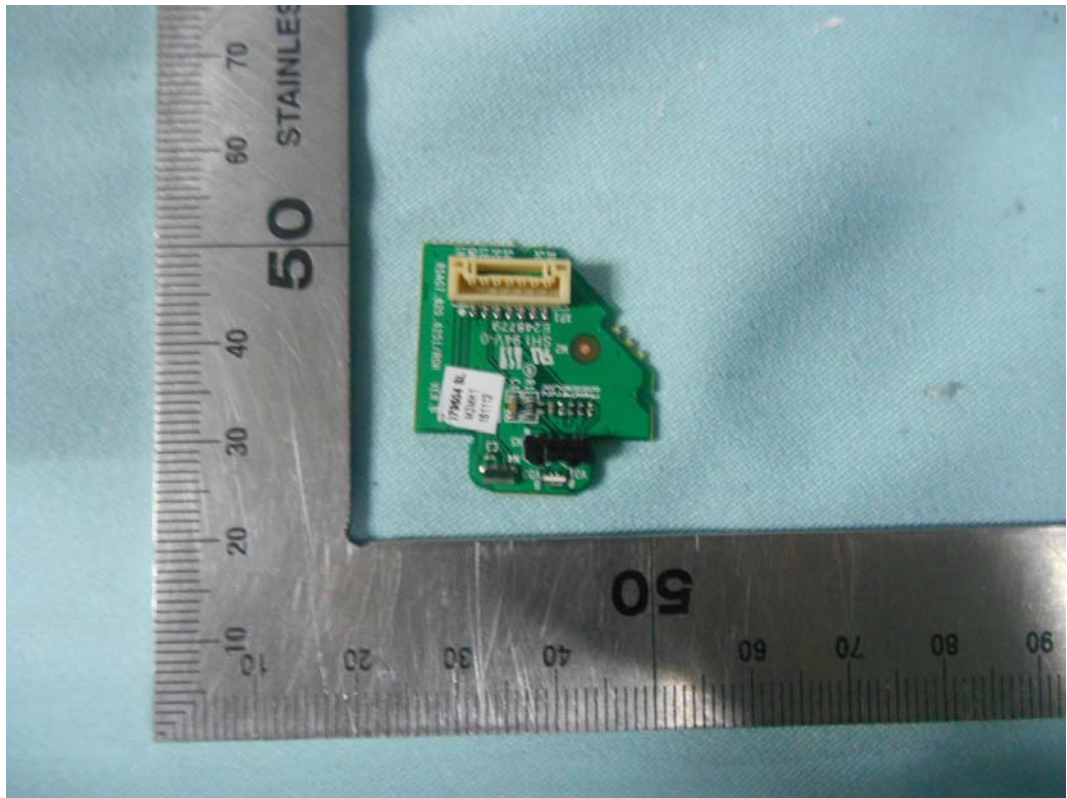


**FIGURE 12**  
**LED LCD TV (M/N: 50H5C)**  
**KEY BOARD (SOLDERED SIDE)**

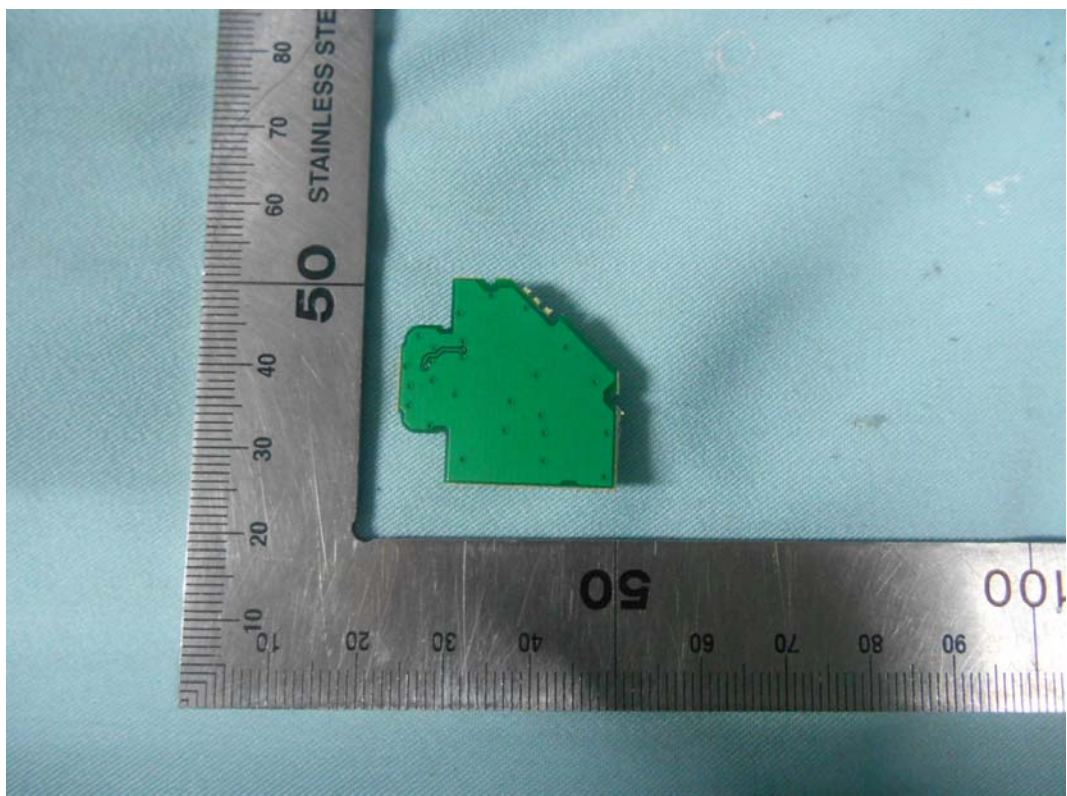




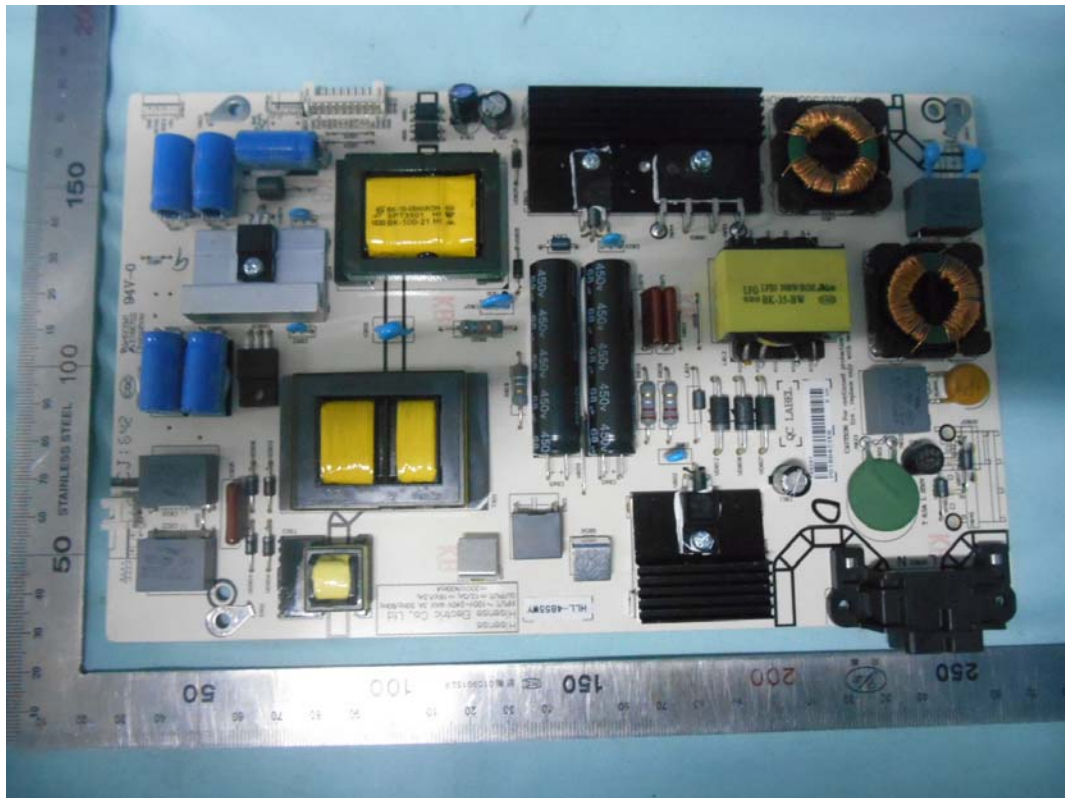
*FIGURE 13*  
*LED LCD TV (M/N: 50H5C)*  
*IR BOARD (COMPONENT SIDE)*



*FIGURE 14*  
*LED LCD TV (M/N: 50H5C)*  
*IR BOARD (SOLDERED SIDE)*



*FIGURE 15*  
*LED LCD TV (M/N: 50H5C)*  
*POWER BOARD (COMPONENT SIDE)*



*FIGURE 16*  
*LED LCD TV (M/N: 50H5C)*  
*POWER BOARD (SOLDERED SIDE)*

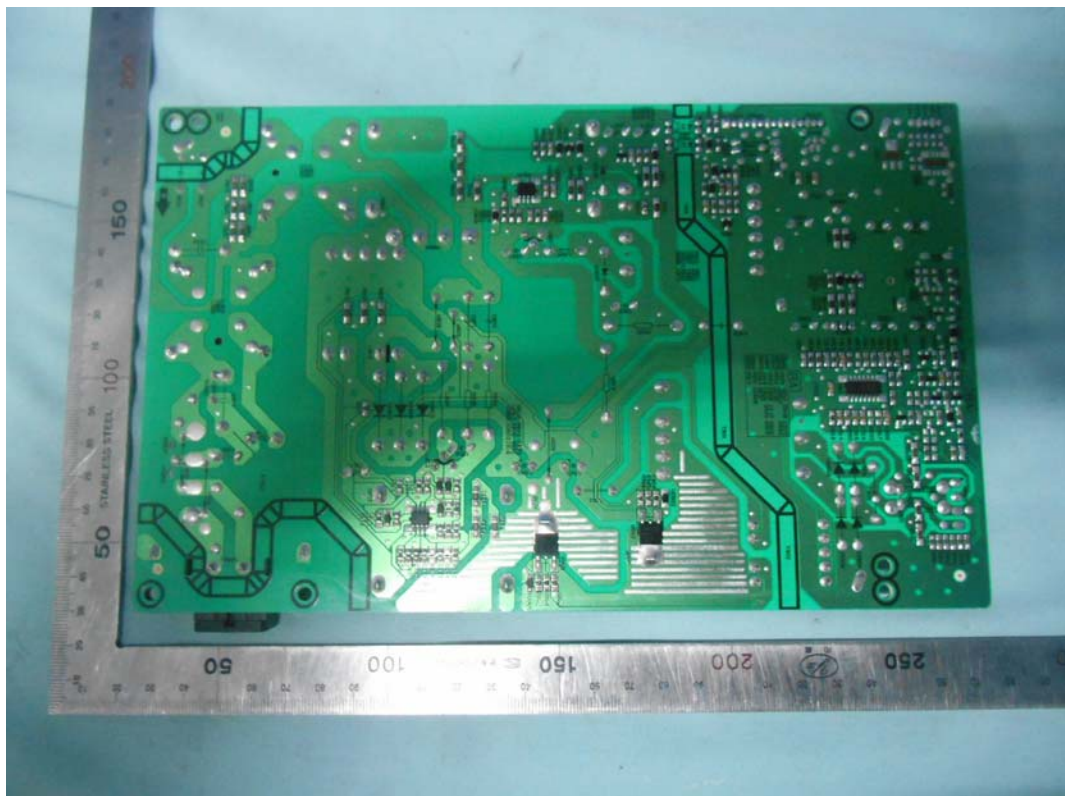




FIGURE 17  
LED LCD TV (M/N: 50H5C)  
DEBUG

