

FIGURE 1
LED LCD TV (M/N: HU65M5010UW)
COVER REMOVED



FIGURE 2
LED LCD TV (M/N: HU65M5010UW)
POWER BOARD (COMPONENT SIDE)

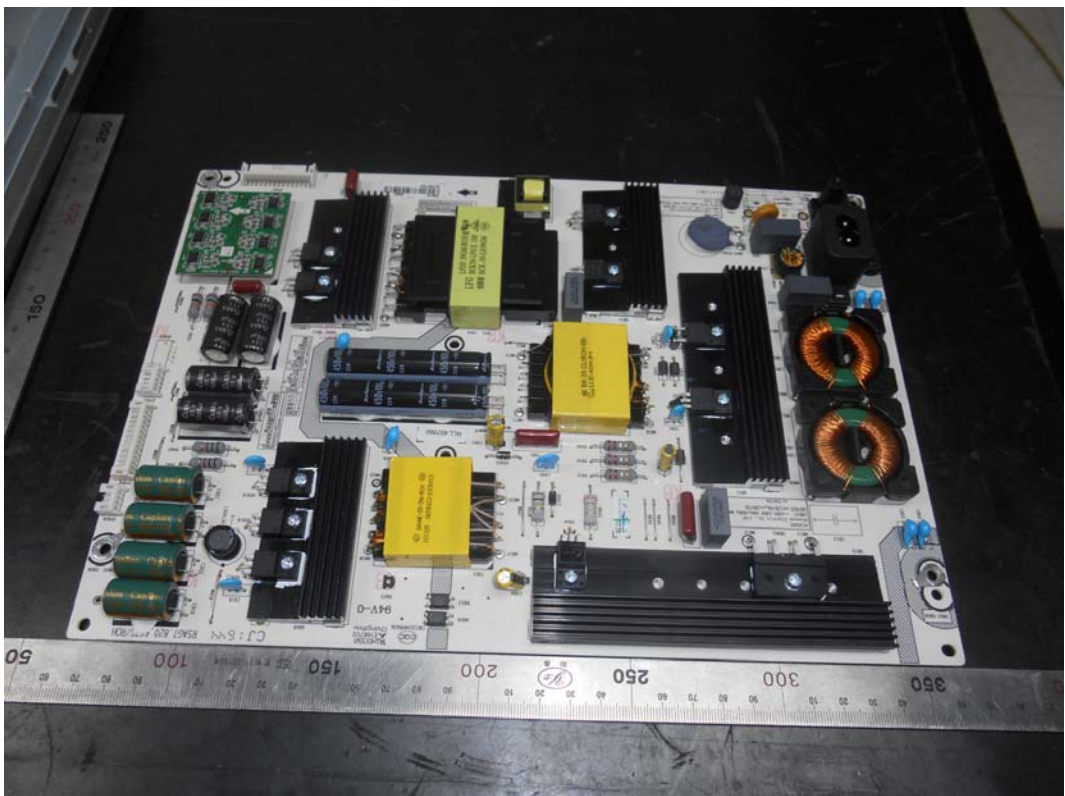


FIGURE 3
LED LCD TV (M/N: HU65M5010UW)
POWER BOARD (SOLDERED SIDE)

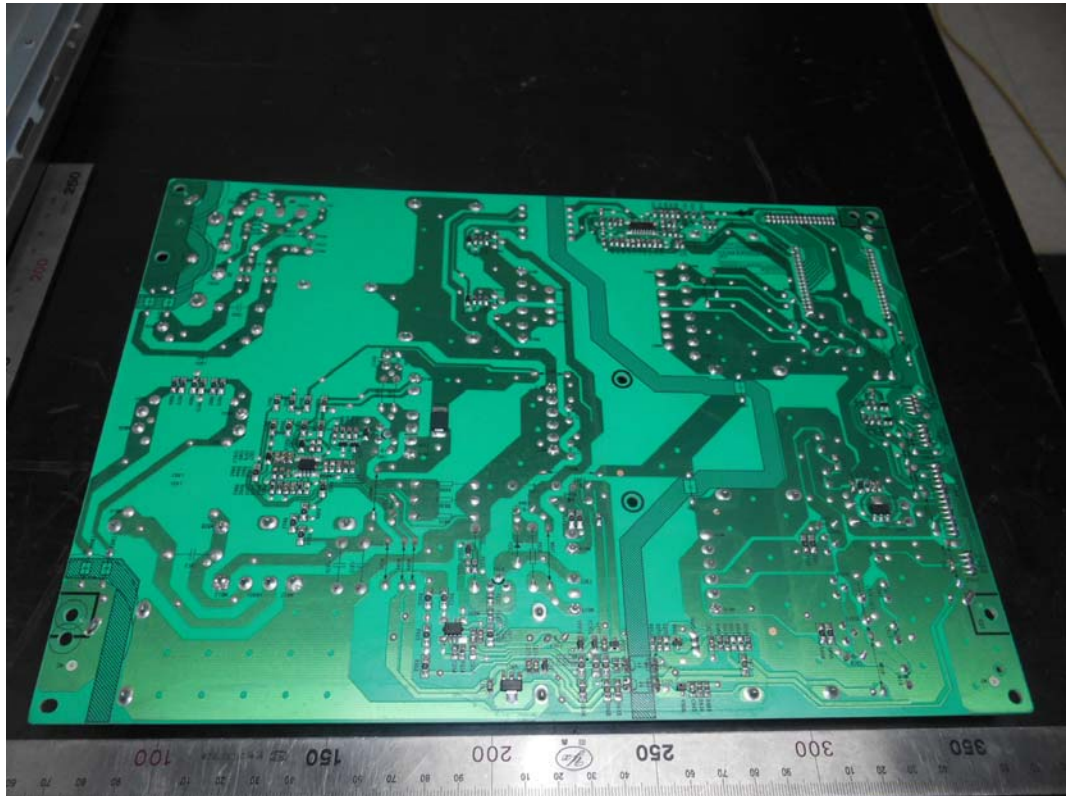


FIGURE 4
LED LCD TV (M/N: HU65M5010UW)
AC BOARD (COMPONENT SIDE)

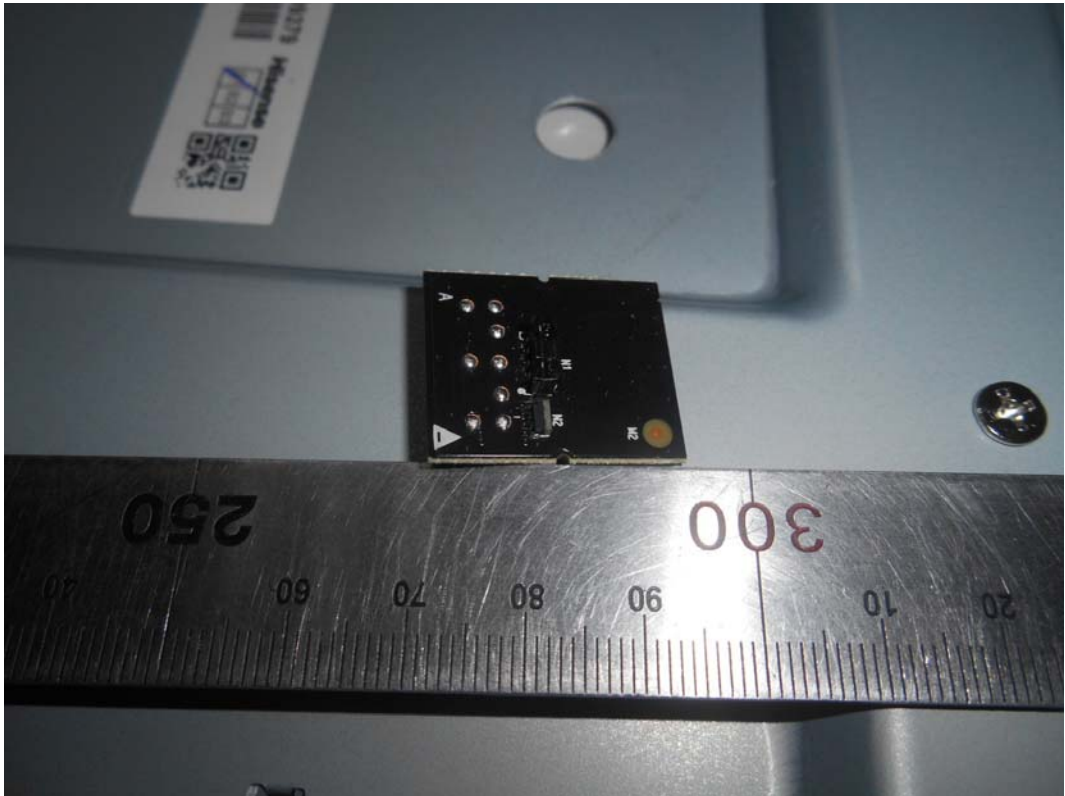


FIGURE 5
LED LCD TV (M/N: HU65M5010UW)
AC BOARD (SOLDERED SIDE)



FIGURE 6
LED LCD TV (M/N: HU65M5010UW)
MAIN BOARD (COMPONENT SIDE)



FIGURE 7
LED LCD TV (M/N: HU65M5010UW)
MAIN BOARD (SOLDERED SIDE)



FIGURE 8
LED LCD TV (M/N: HU65M5010UW)
CHIP AND CRYSTAL ON MAIN BOARD

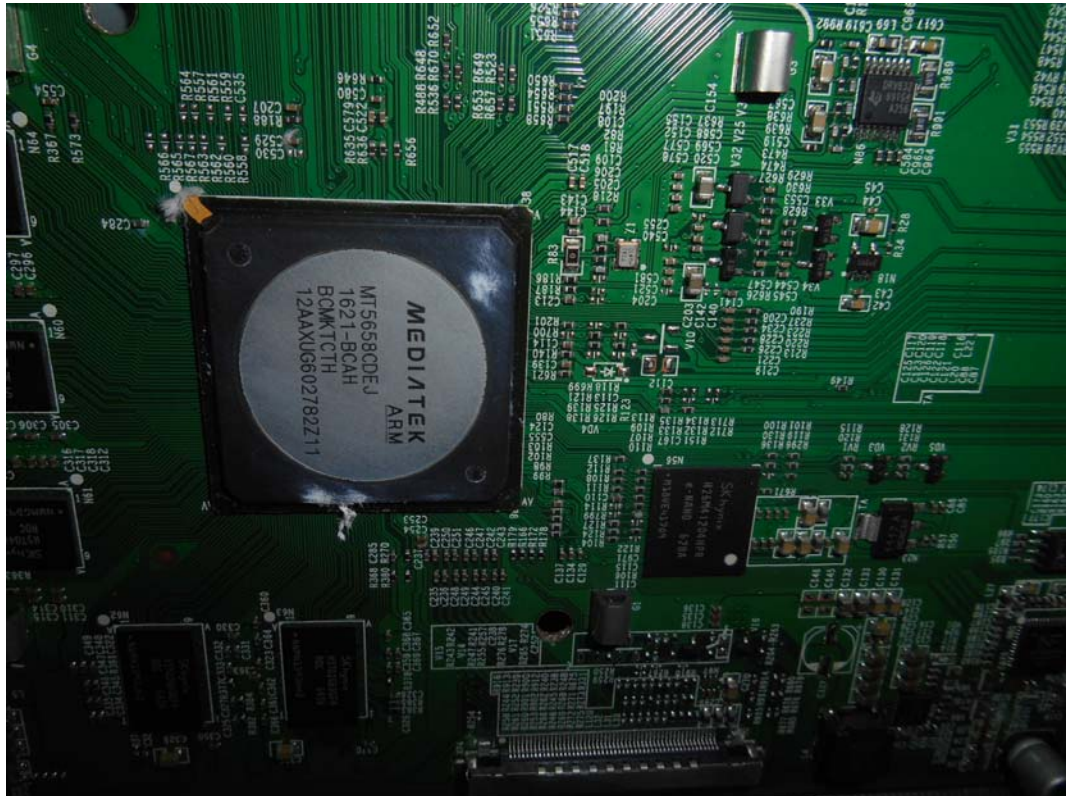
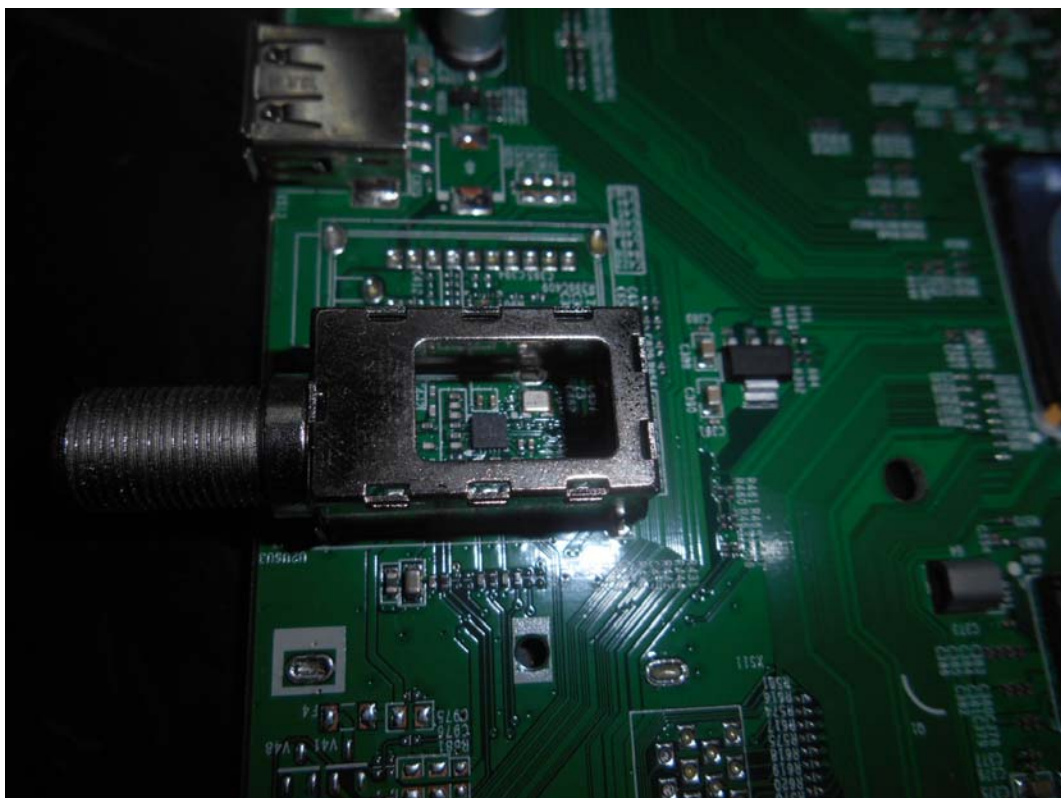


FIGURE 9
LED LCD TV (M/N: HU65M5010UW)
TUNER



LED LCD TV (M/N: HU65M5010UW)
KEY BOARD (COMPONENT SIDE)

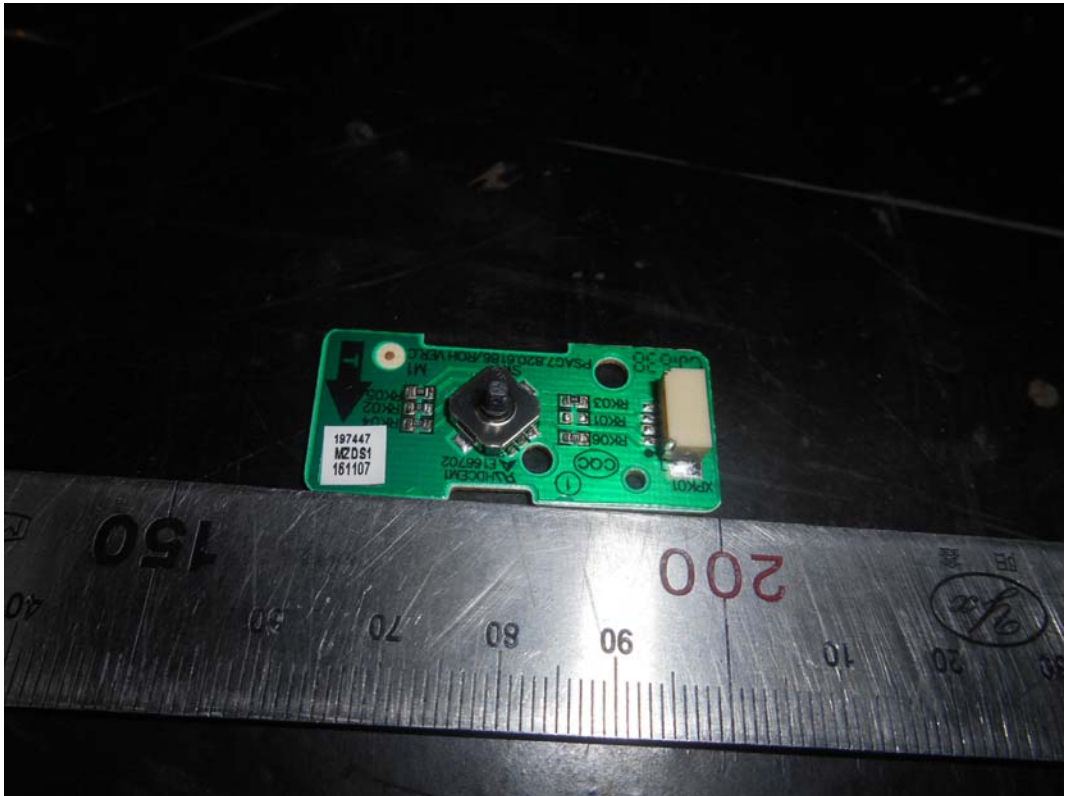


FIGURE 11
LED LCD TV (M/N: HU65M5010UW)
KEY BOARD (SOLDERED SIDE)



FIGURE 12
LED LCD TV (M/N: HU65M5010UW)
RF BOARD (COMPONENT SIDE)

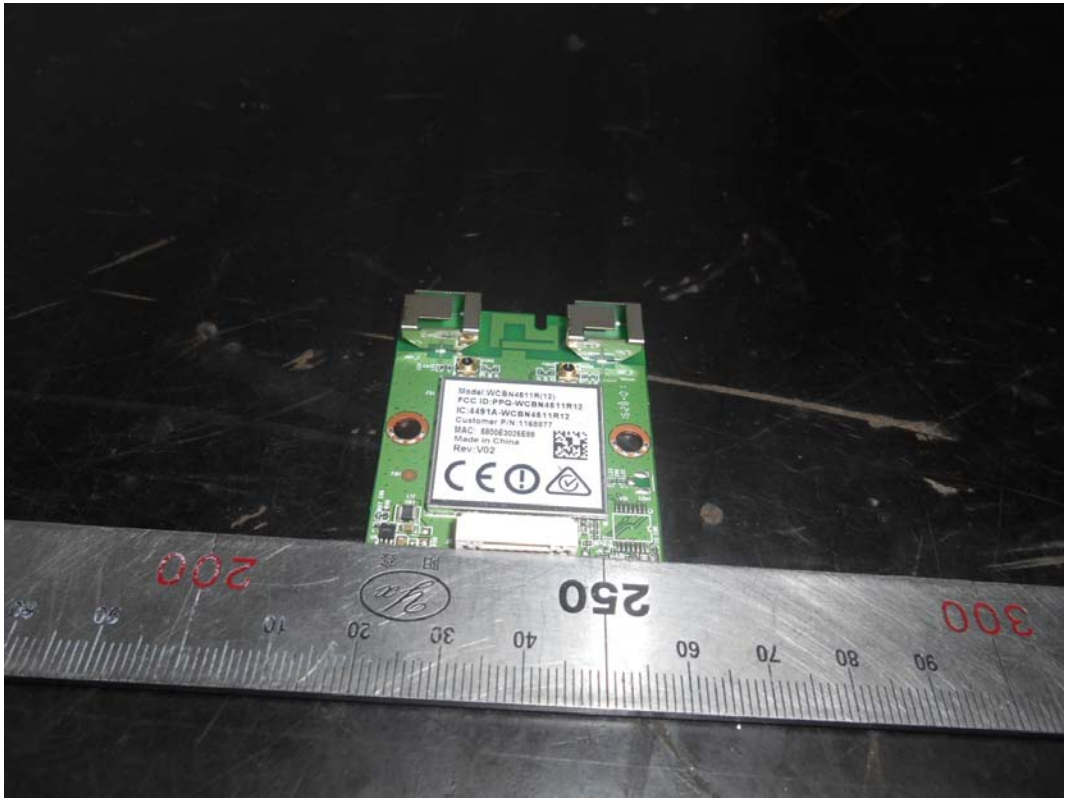


FIGURE 13
LED LCD TV (M/N: HU65M5010UW)
RF BOARD (SOLDERED SIDE)



FIGURE 14
LED LCD TV (M/N: HU65M5010UW)
RF LABEL



FIGURE 15
LED LCD TV (M/N: HU65M5010UW)
CHIP AND CRYSTAL ON RF BOARD



FIGURE 16
LED LCD TV (M/N: HU65M5010UW)
PANEL BOARD (COMPONENT SIDE)



FIGURE 17
LED LCD TV (M/N: HU65M5010UW)
PANEL BOARD (SOLDERED SIDE)

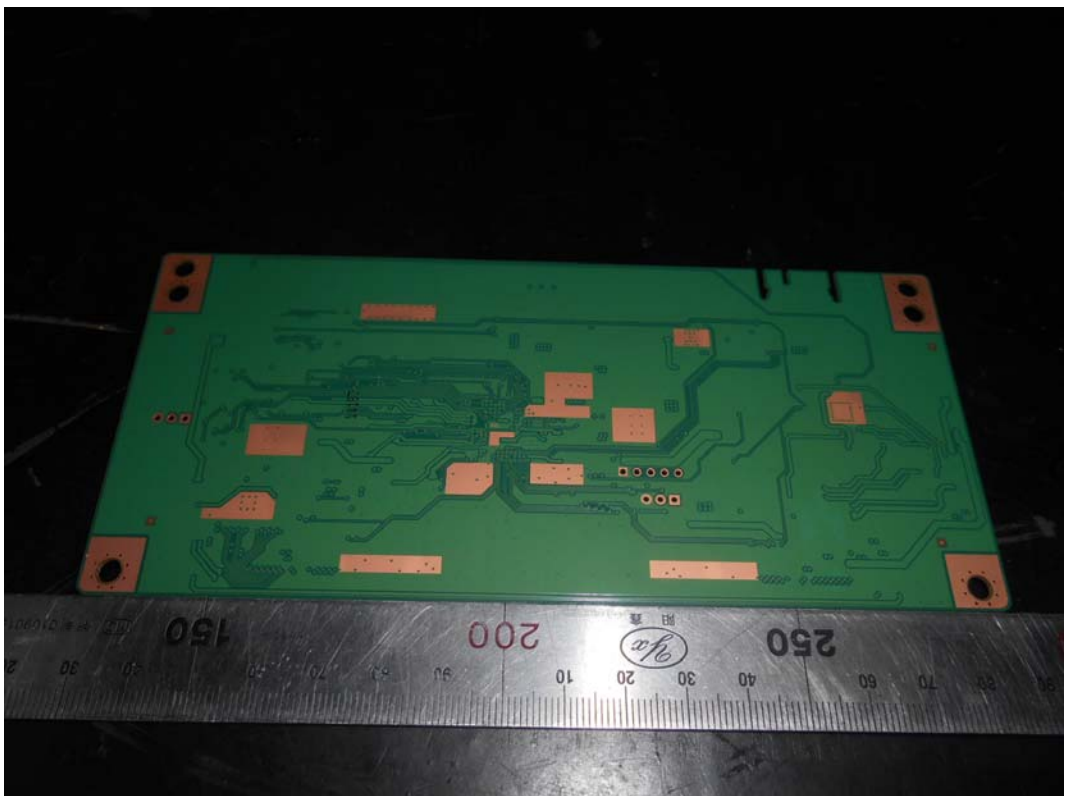


FIGURE 18
LED LCD TV (M/N: HU65M5010UW)
CHIP AND CRYSTAL ON PANEL BOARD

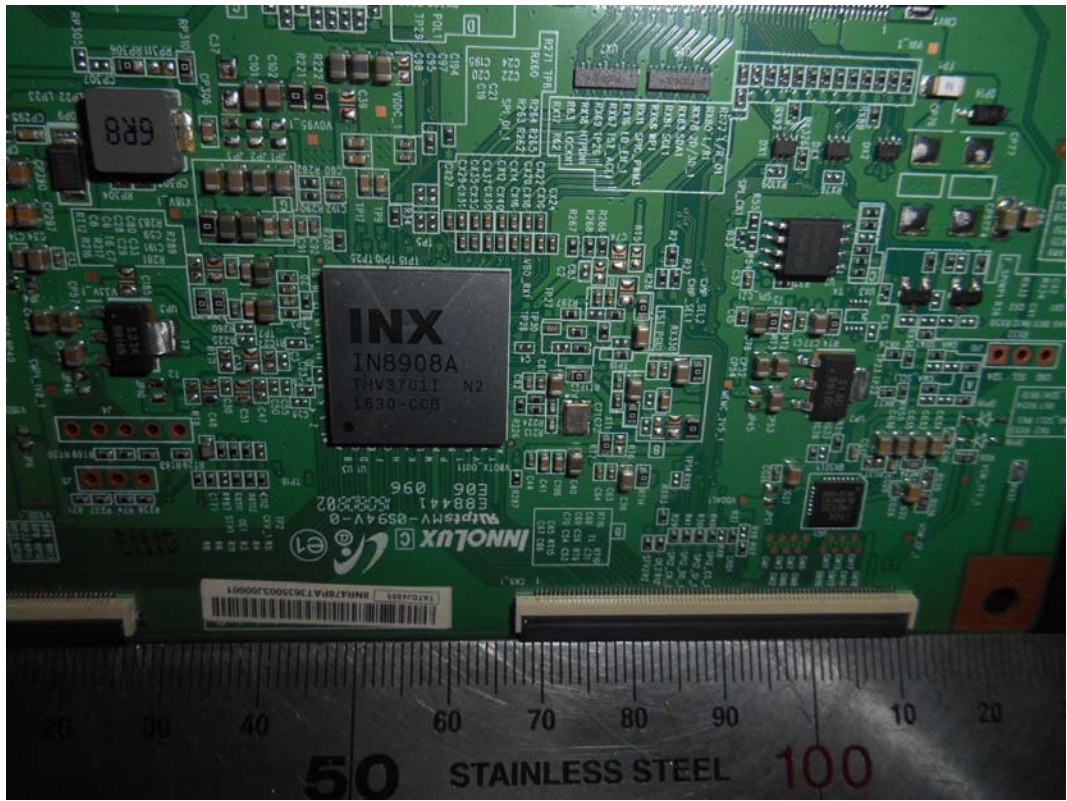


FIGURE 19
LED LCD TV (M/N: HU65M5010UW)
DEBUG

