

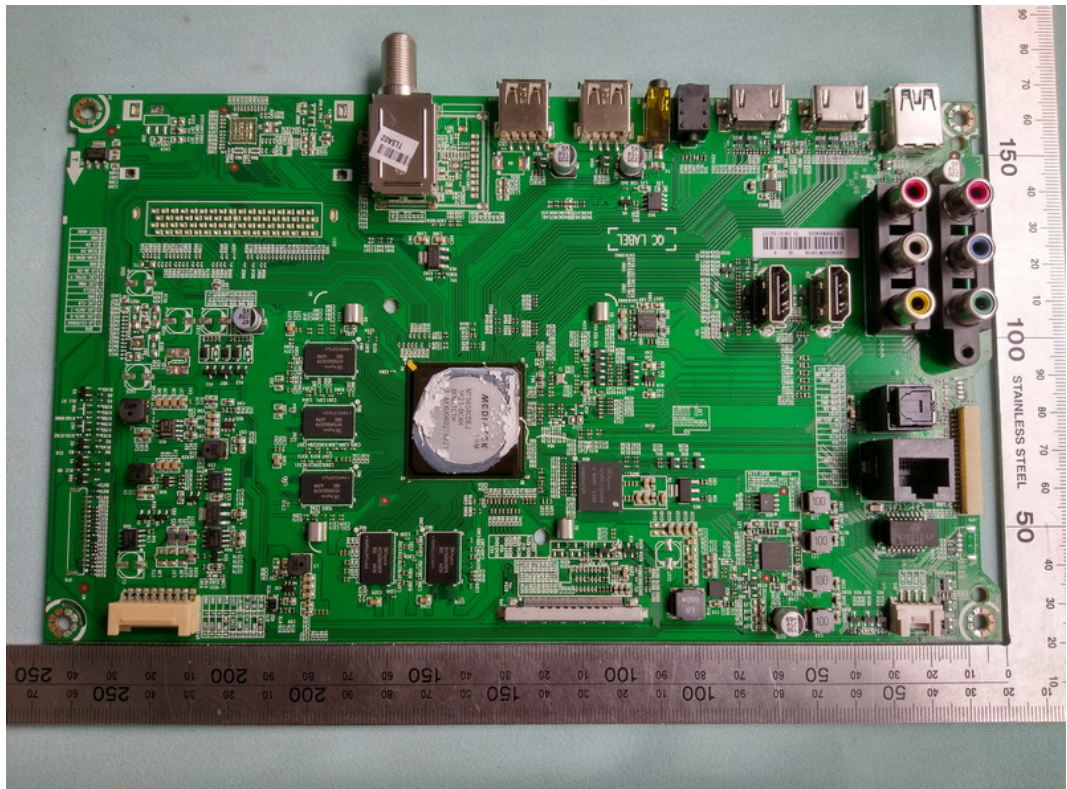
FIGURE 1
LED LCD TV (M/N: HU50N3000UW)
COVER REMOVED



FIGURE 2
LED LCD TV (M/N: HU50N3000UW)
LCD PANEL LABEL



*FIGURE 3
LED LCD TV (M/N: HU50N3000UW)
MAIN BOARD (COMPONENT SIDE)*



*FIGURE 4
LED LCD TV (M/N: HU50N3000UW)
MAIN BOARD (SOLDERED SIDE)*

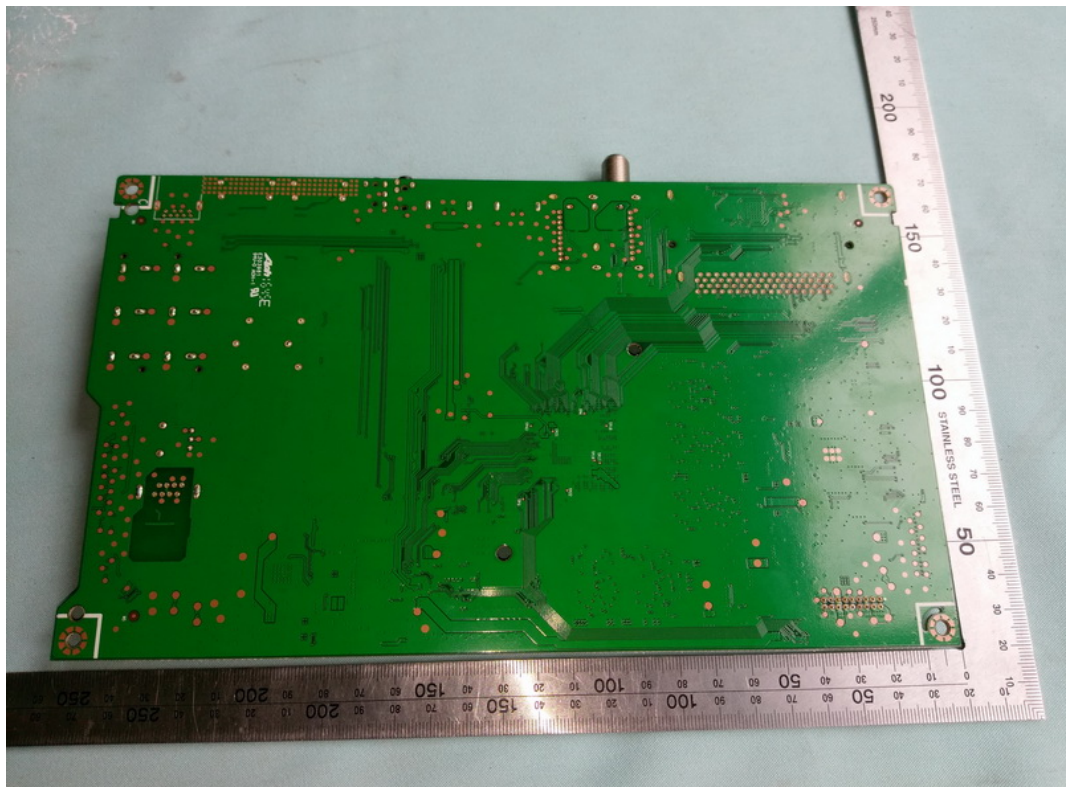


FIGURE 5
LED LCD TV (M/N: HU50N3000UW)
CHIP AND CRYSTAL ON MAIN BOARD

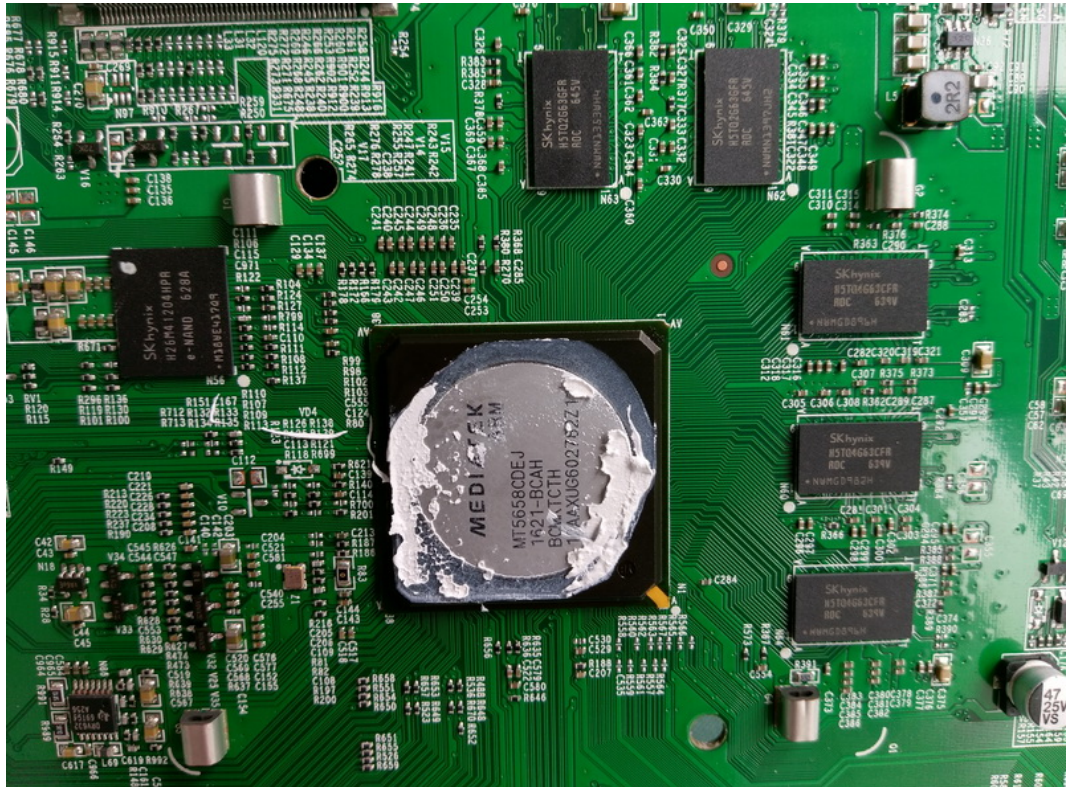


FIGURE 6
LED LCD TV (M/N: HU50N3000UW)
TUNER

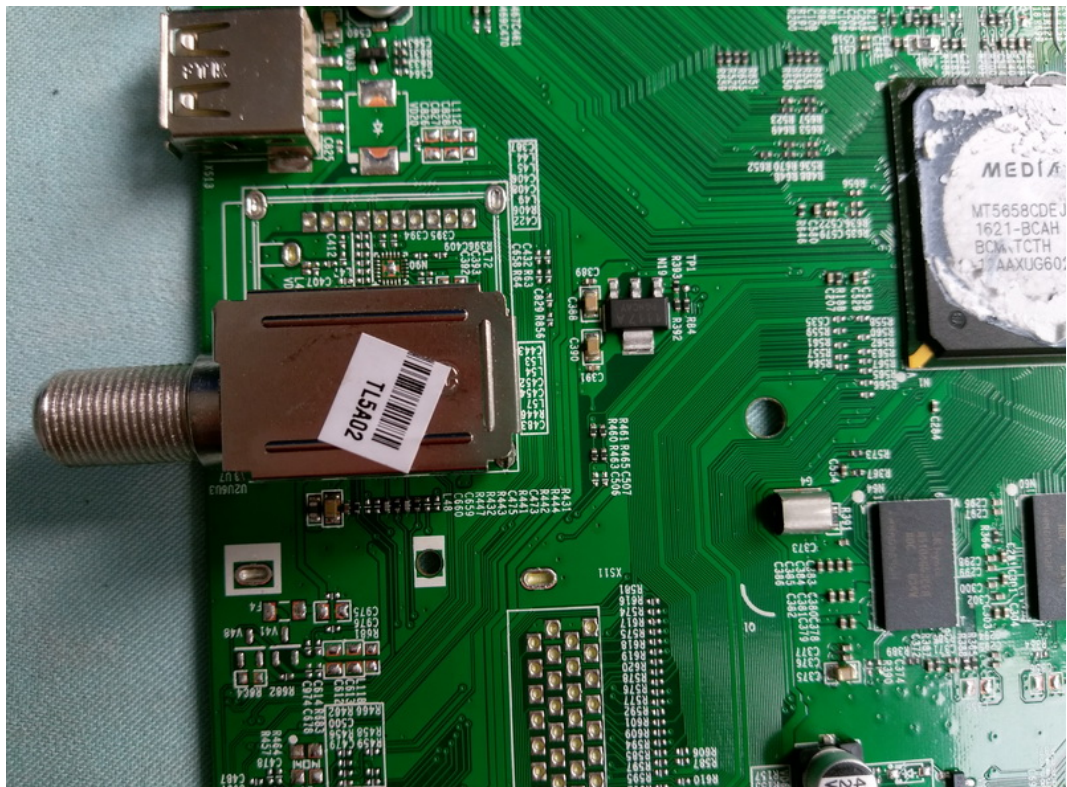


FIGURE 7
LED LCD TV (M/N: HU50N3000UW)
RF BOARD (COMPONENT SIDE)



FIGURE 8
LED LCD TV (M/N: HU50N3000UW)
RF BOARD (SOLDERED SIDE)

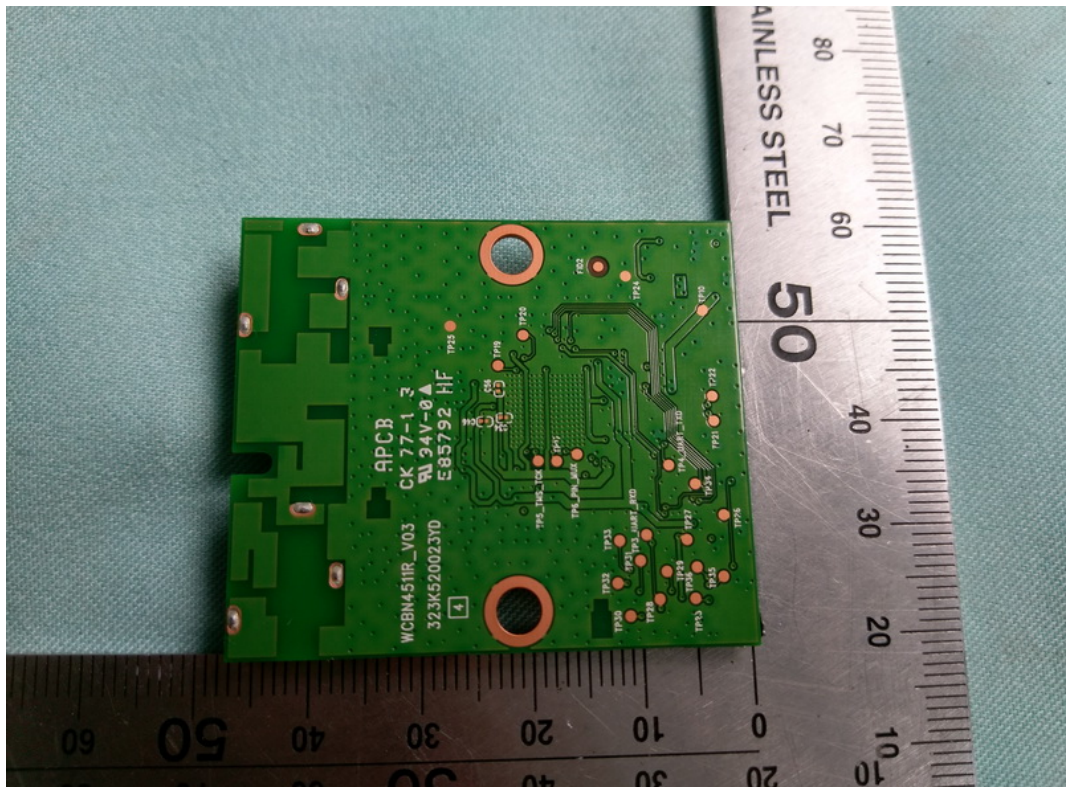


FIGURE 9
LED LCD TV (M/N: HU50N3000UW)
RF BOARD LABEL



FIGURE 10
LED LCD TV (M/N: HU50N3000UW)
CHIP AND CRYSTAL ON RF BOARD

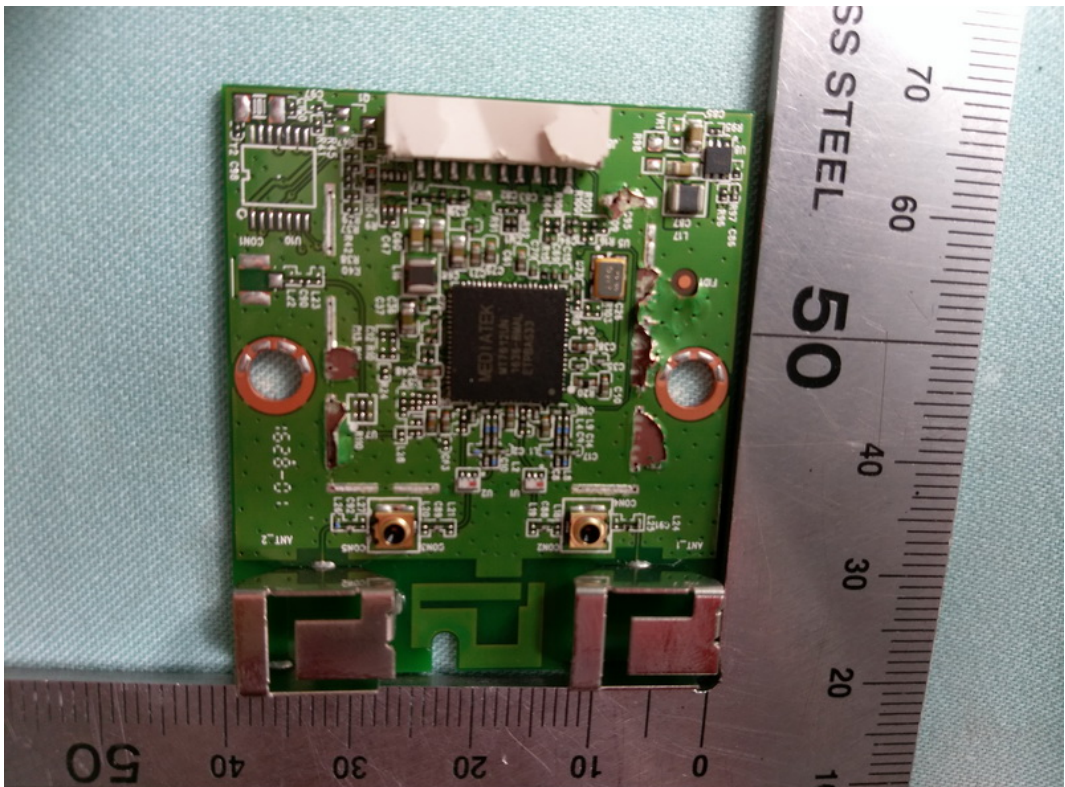


FIGURE 11
LED LCD TV (M/N: HU50N3000UW)
KEY BOARD (COMPONENT SIDE)

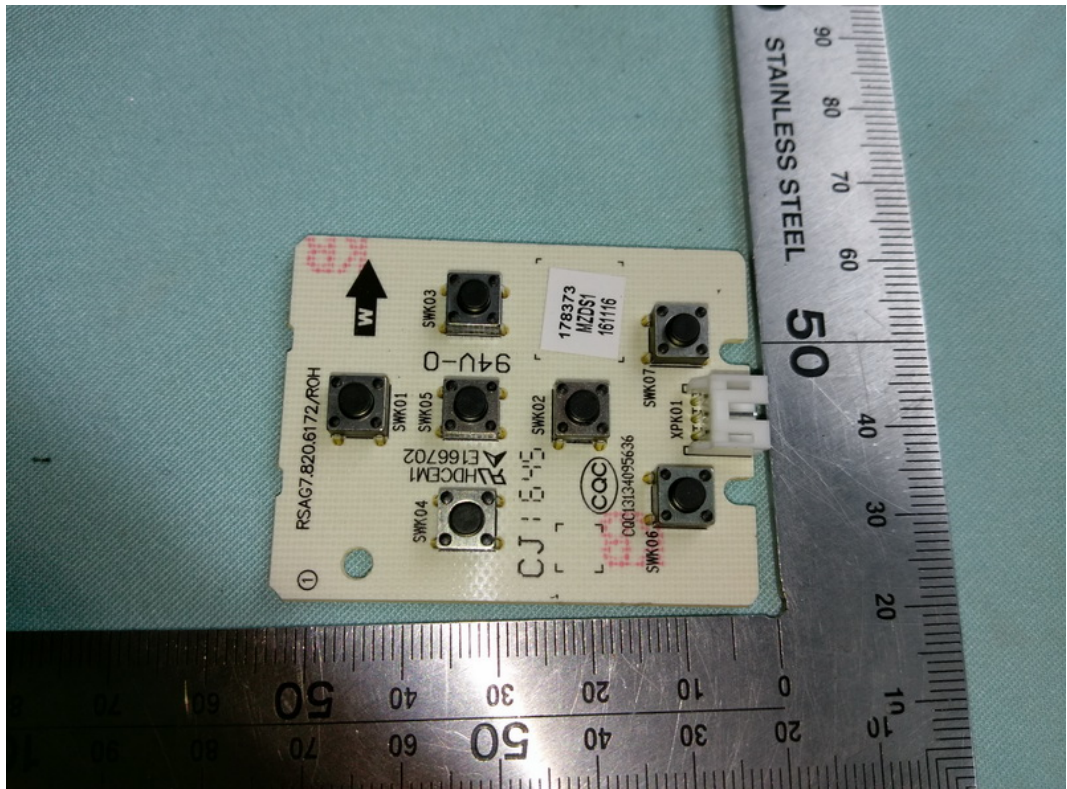


FIGURE 12
LED LCD TV (M/N: HU50N3000UW)
KEY BOARD (SOLDERED SIDE)

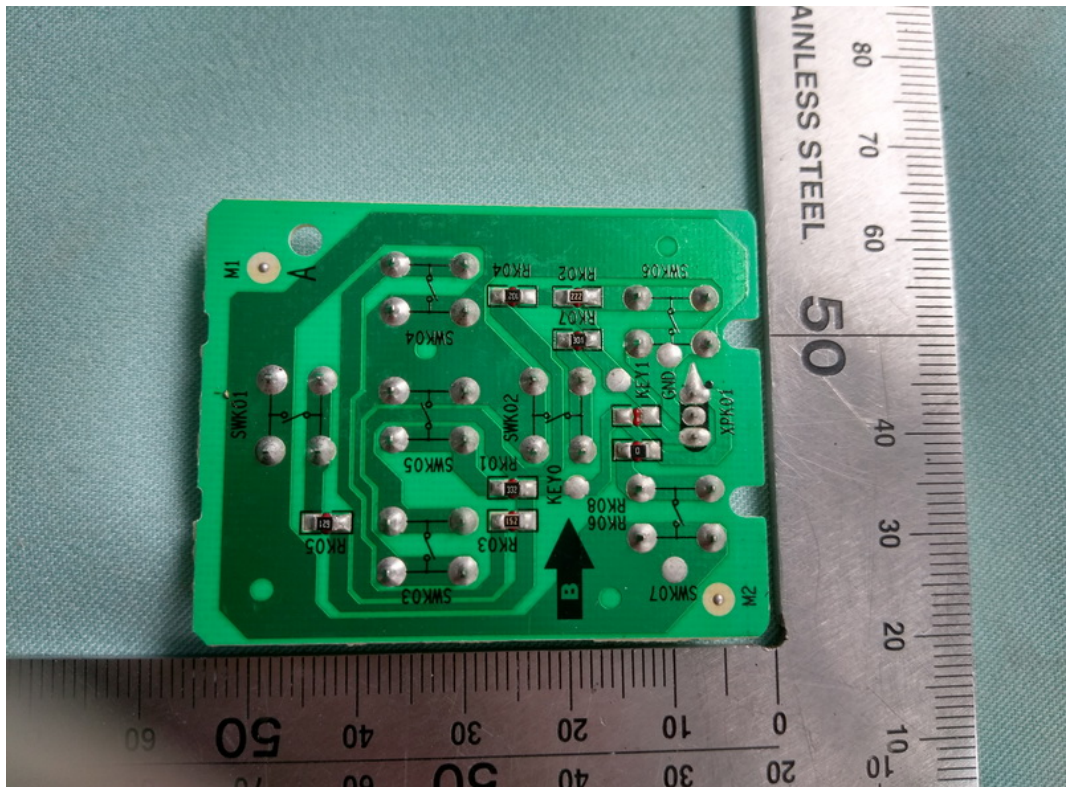


FIGURE 13
LED LCD TV (M/N: HU50N3000UW)
IR BOARD (COMPONENT SIDE)

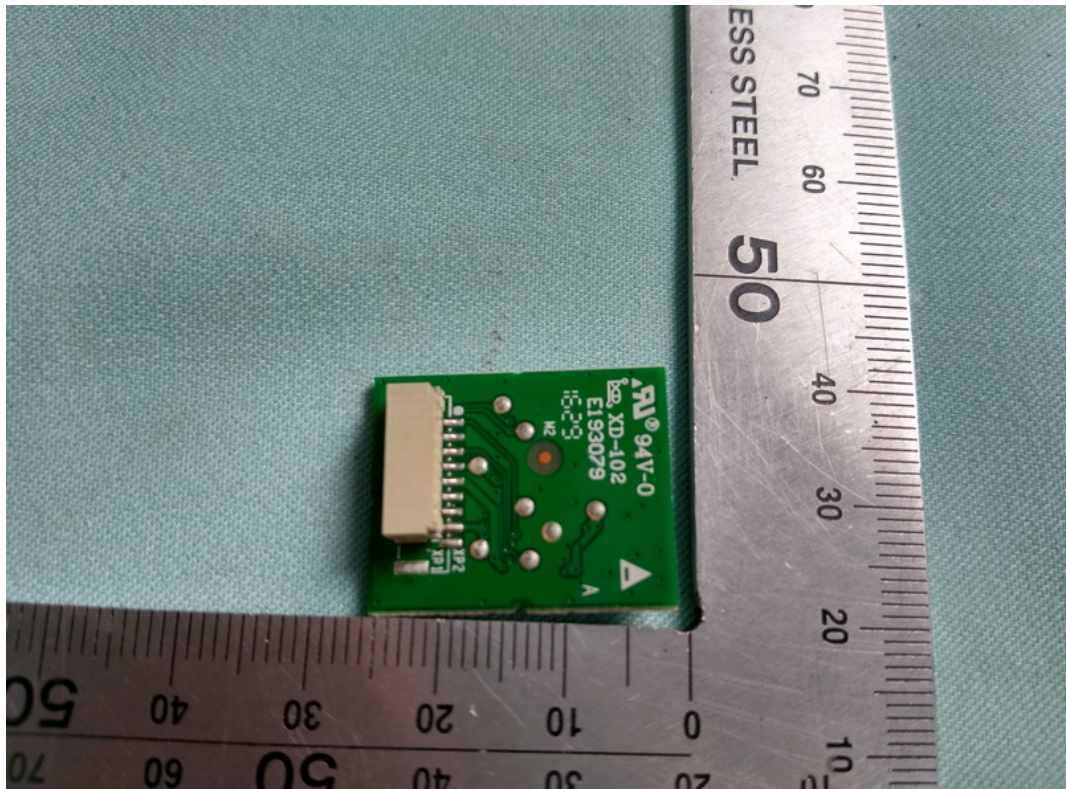


FIGURE 14
LED LCD TV (M/N: HU50N3000UW)
IR BOARD (SOLDERED SIDE)

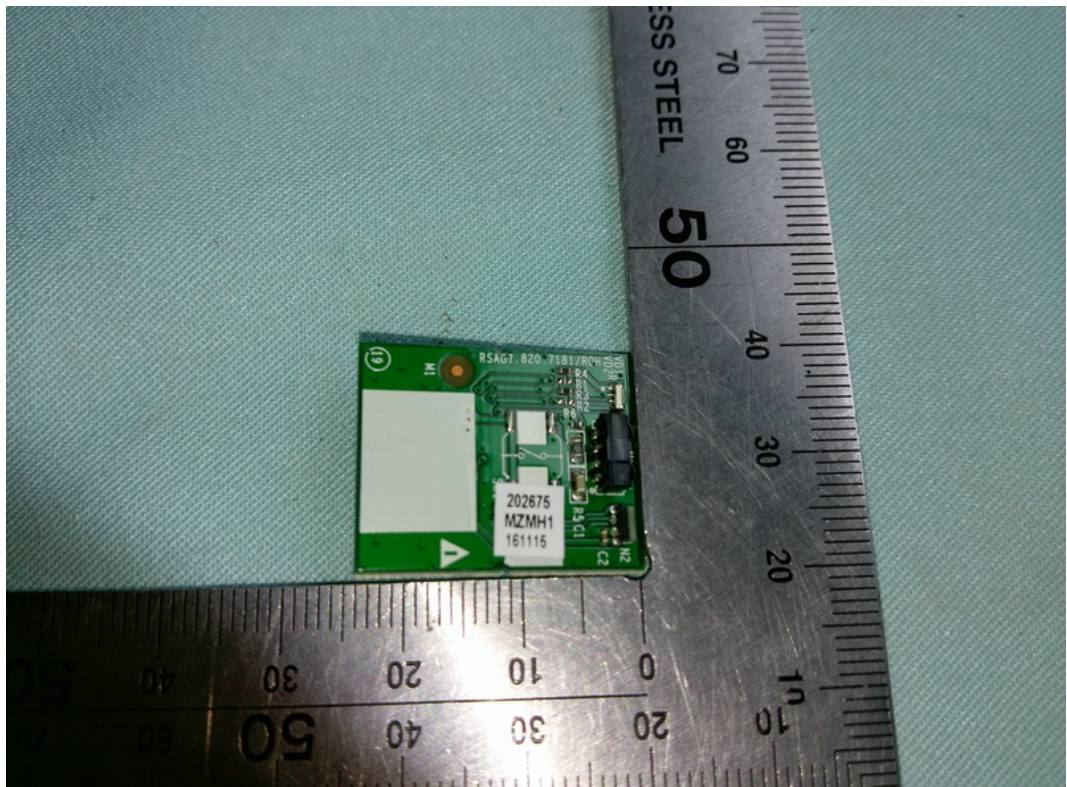


FIGURE 15
LED LCD TV (M/N: HU50N3000UW)
POWER BOARD (COMPONENT SIDE)

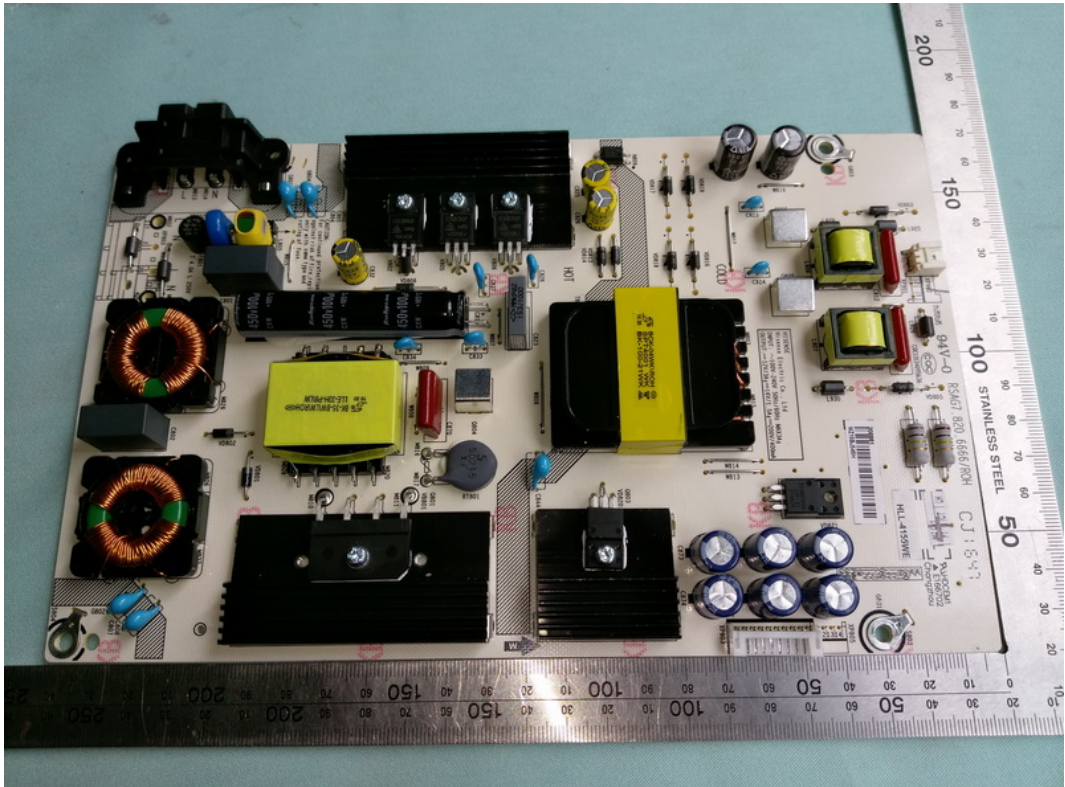


FIGURE 16
LED LCD TV (M/N: HU50N3000UW)
POWER BOARD (SOLDERED SIDE)

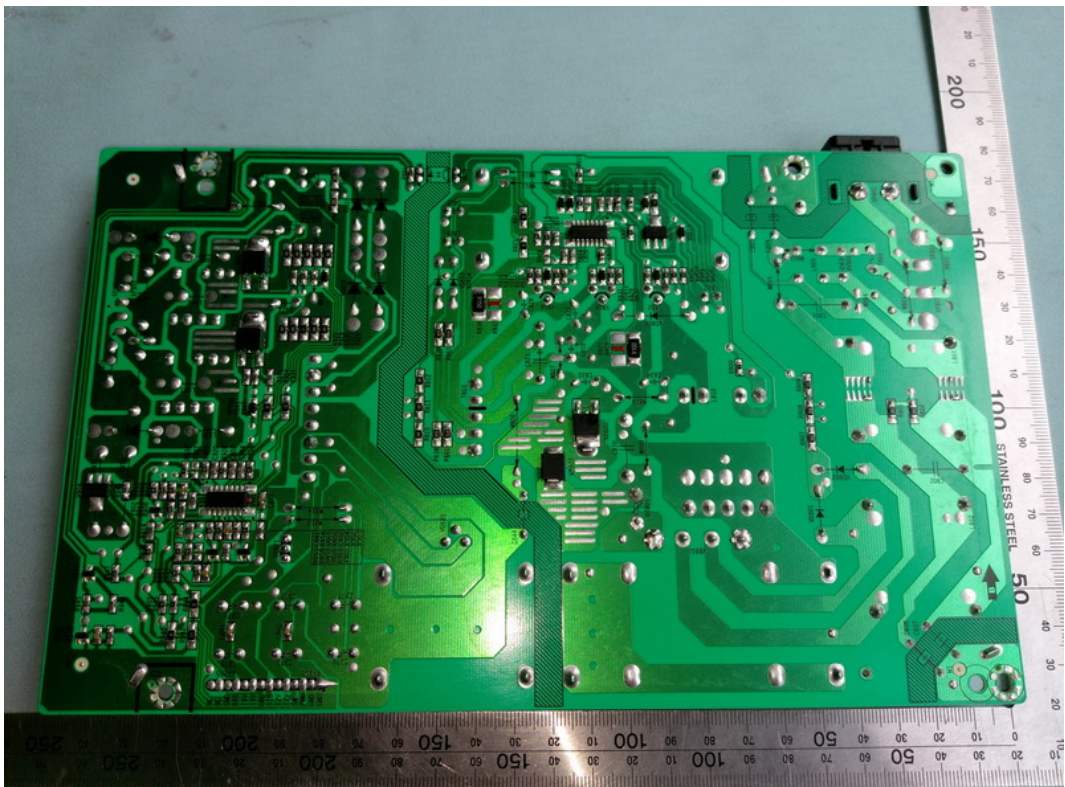


FIGURE 17
LED LCD TV (M/N: HU50N3000UW)
DEBUG

