

*FIGURE 1
LED LCD TV (M/N: 65H9D)
COVER REMOVED*



*FIGURE 2
LED LCD TV (M/N: 65H9D)
POWER BOARD (COMPONENT SIDE)*



FIGURE 3
LED LCD TV (M/N: 65H9D)
POWER BOARD (SOLDERED SIDE)

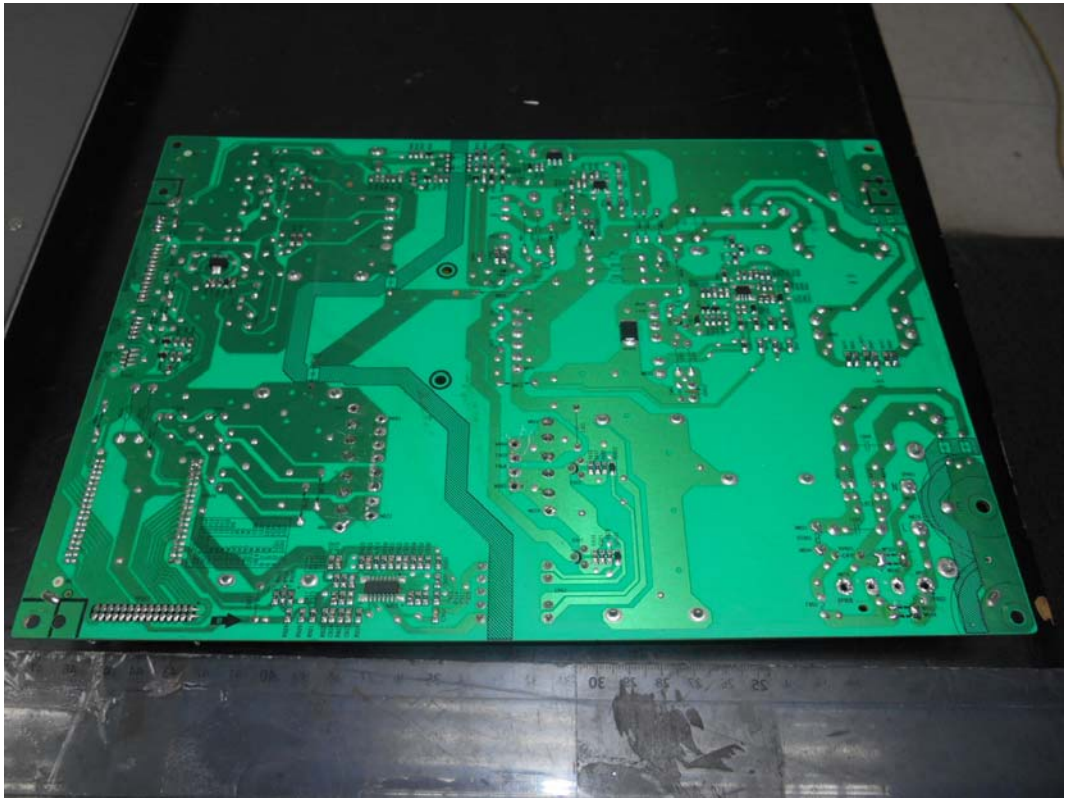


FIGURE 4
LED LCD TV (M/N: 65H9D)
IR BOARD (COMPONENT SIDE)



FIGURE 5
LED LCD TV (M/N: 65H9D)
IR BOARD (SOLDERED SIDE)



FIGURE 6
LED LCD TV (M/N: 65H9D)
DC BOARD (COMPONENT SIDE)



FIGURE 7
LED LCD TV (M/N: 65H9D)
DC BOARD (SOLDERED SIDE)

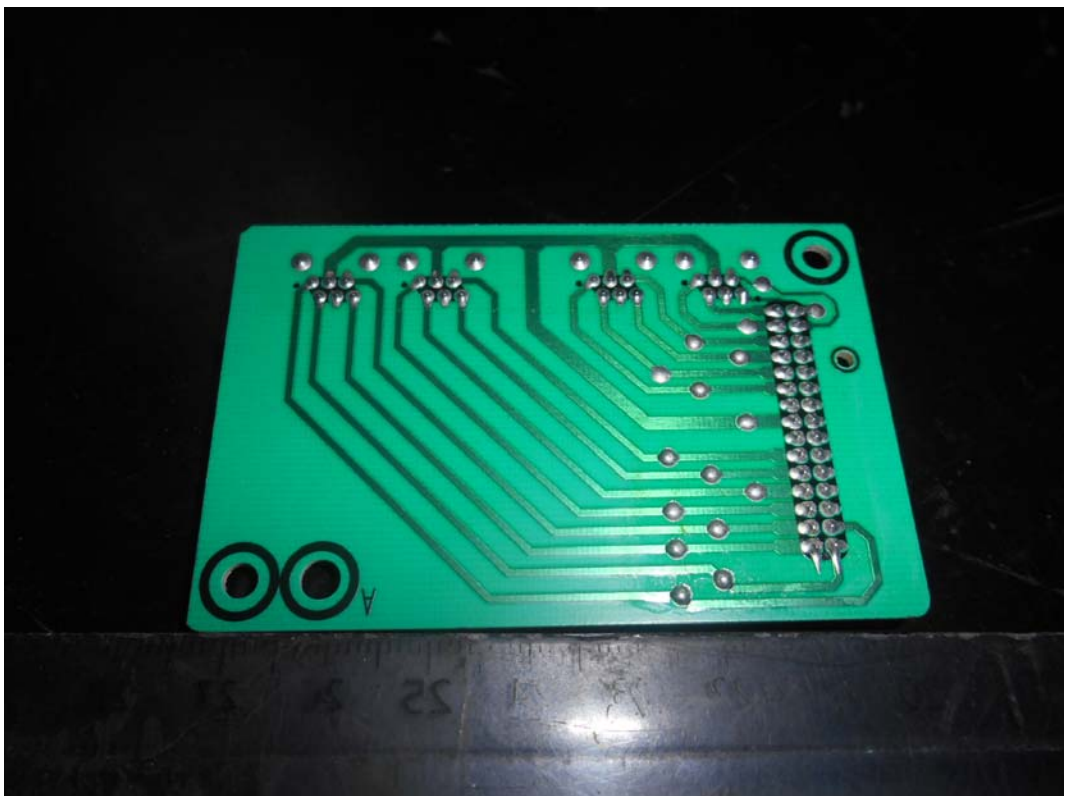


FIGURE 8
LED LCD TV (M/N: 65H9D)
MAIN BOARD (COMPONENT SIDE)



FIGURE 9
LED LCD TV (M/N: 65H9D)
MAIN BOARD (SOLDERED SIDE)

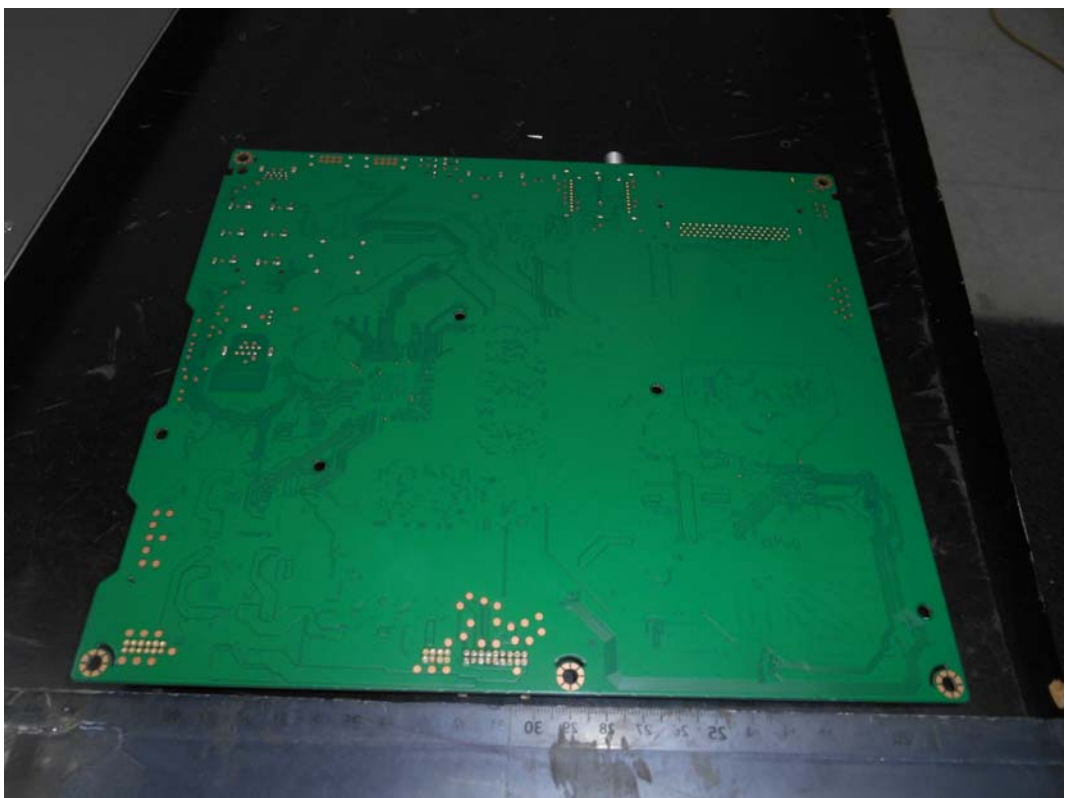


FIGURE 12
LED LCD TV (M/N: 65H9D)
TUNER

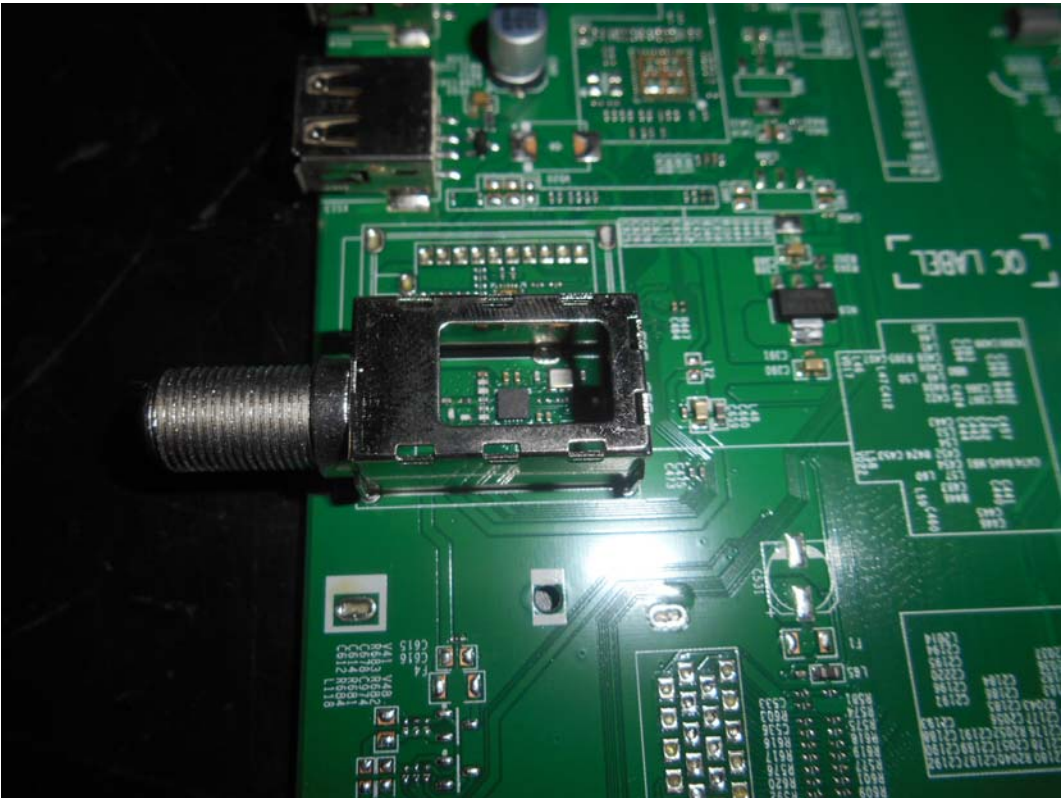


FIGURE 13
LED LCD TV (M/N: 65H9D)
KEY BOARD (COMPONENT SIDE)

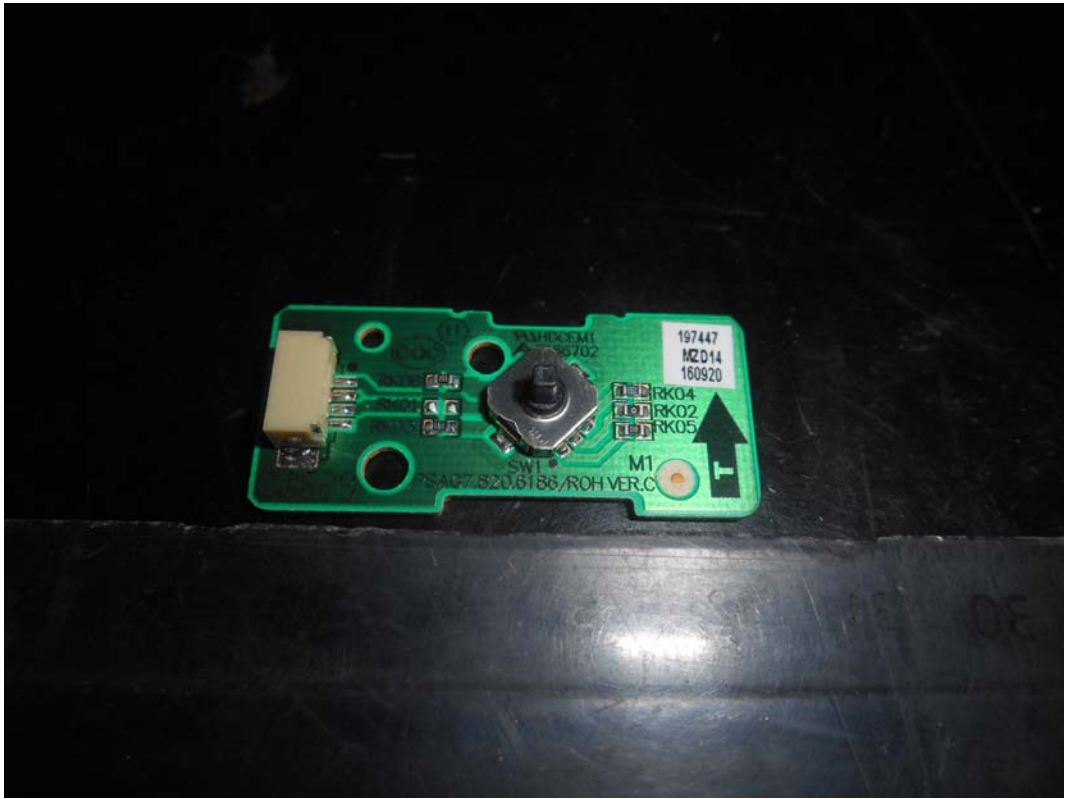


FIGURE 14
LED LCD TV (M/N: 65H9D)
KEY BOARD (SOLDERED SIDE)



FIGURE 15
LED LCD TV (M/N: 65H9D)
RF BOARD (COMPONENT SIDE)



FIGURE 16
LED LCD TV (M/N: 65H9D)
RF BOARD (SOLDERED SIDE)



FIGURE 17
LED LCD TV (M/N: 65H9D)
RF LABEL



FIGURE 18
LED LCD TV (M/N: 65H9D)
CHIP AND CRYSTAL ON RF BOARD

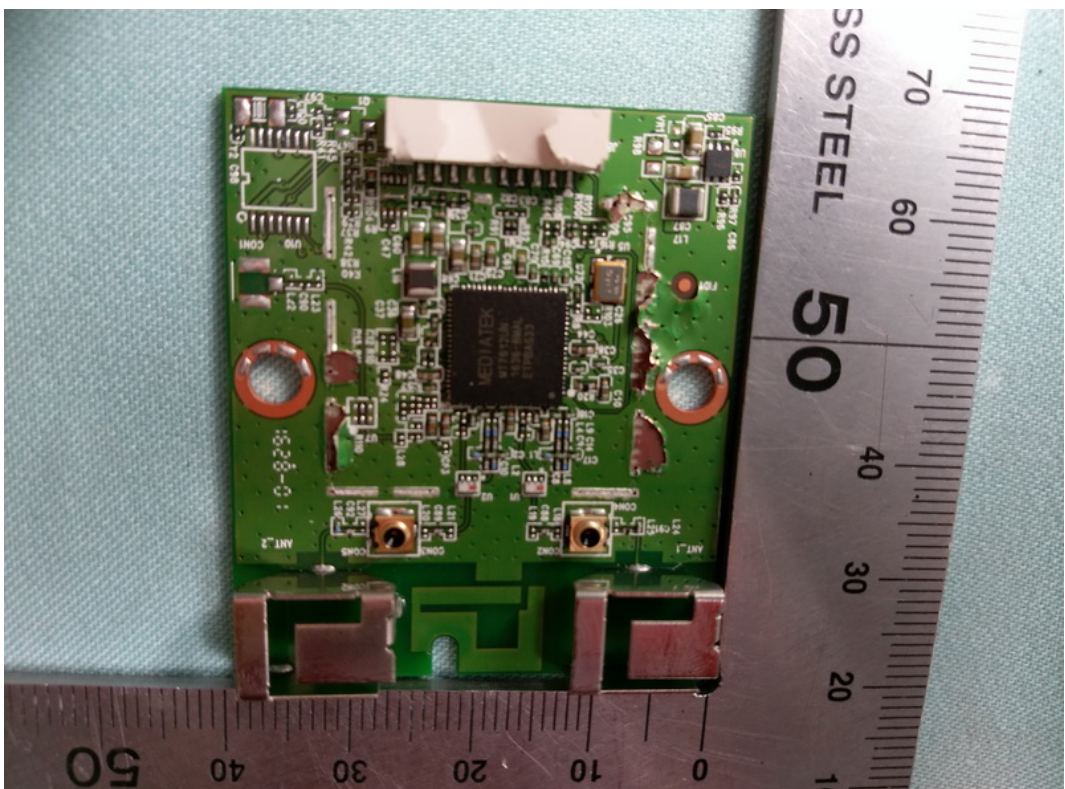


FIGURE 19
LED LCD TV (M/N: 65H9D)
PANEL BOARD (COMPONENT SIDE)



FIGURE 20
LED LCD TV (M/N: 65H9D)
PANEL BOARD (SOLDERED SIDE)

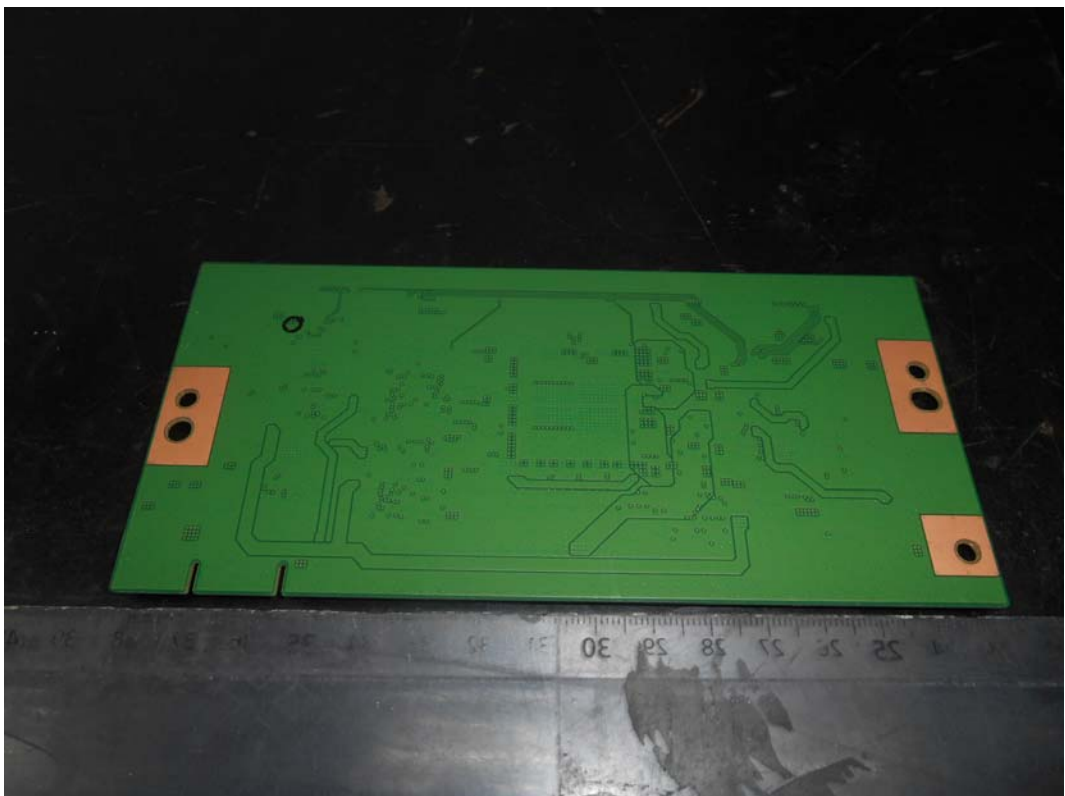


FIGURE 21
LED LCD TV(M/N: 65H9D)
CHIP AND CRYSTAL ON PANEL BOARD



FIGURE 22
LED LCD TV(M/N: 65H9D)
DEBUG#1

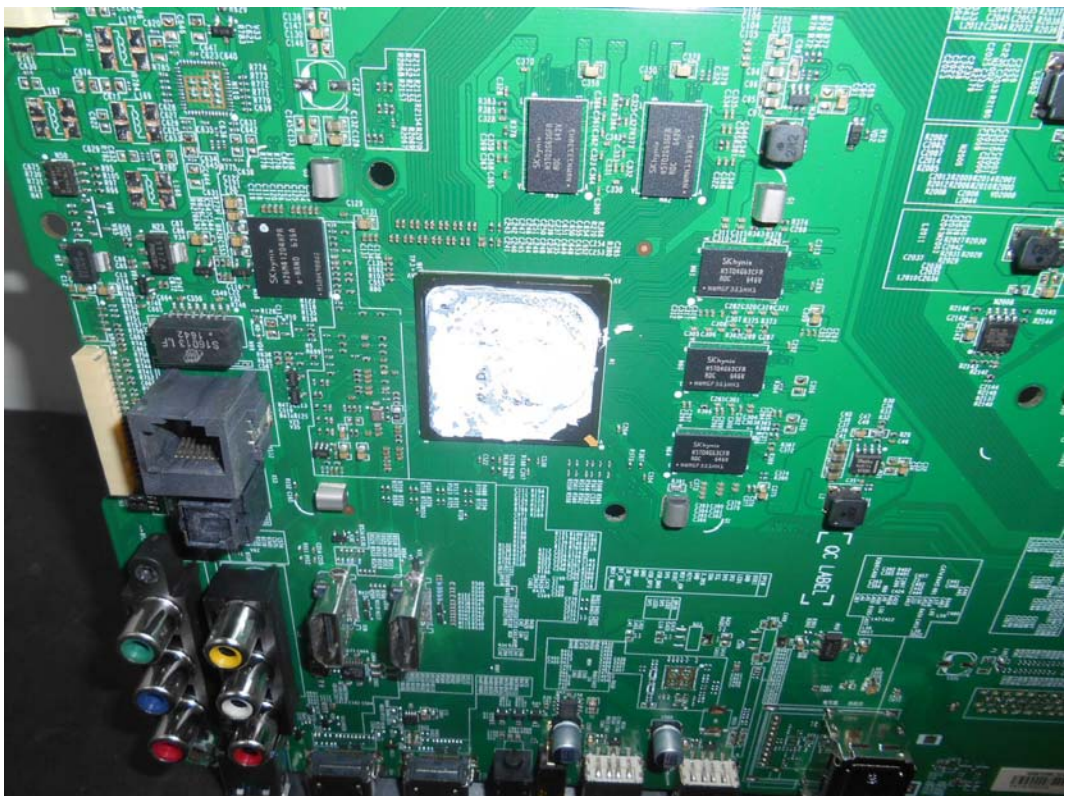


FIGURE 23
LED LCD TV (M/N: 65H9D)
DEBUG#2

