

FIGURE 1
LED LCD TV (M/N: LC-70N9100U)
COVER REMOVED



FIGURE 2
LED LCD TV (M/N: LC-70N9100U)
LCD PANEL LABEL



FIGURE 3
LED LCD TV (M/N: LC-70N9100U)
POWER BOARD (COMPONENT SIDE)



FIGURE 4
LED LCD TV (M/N: LC-70N9100U)
POWER BOARD (SOLDERED SIDE)



FIGURE 5
LED LCD TV (M/N: LC-70N9100U)
MAIN BOARD (COMPONENT SIDE)



FIGURE 6
LED LCD TV (M/N: LC-70N9100U)
MAIN BOARD (SOLDERED SIDE)



FIGURE 7
LED LCD TV (M/N: LC-70N9100U)
CHIP & CRYSTAL#1 ON MAIN BOARD



FIGURE 8
LED LCD TV (M/N: LC-70N9100U)
CHIP & CRYSTAL#2 ON MAIN BOARD



FIGURE 9
LED LCD TV (M/N: LC-70N9100U)
TUNER BOARD (COMPONENT SIDE)

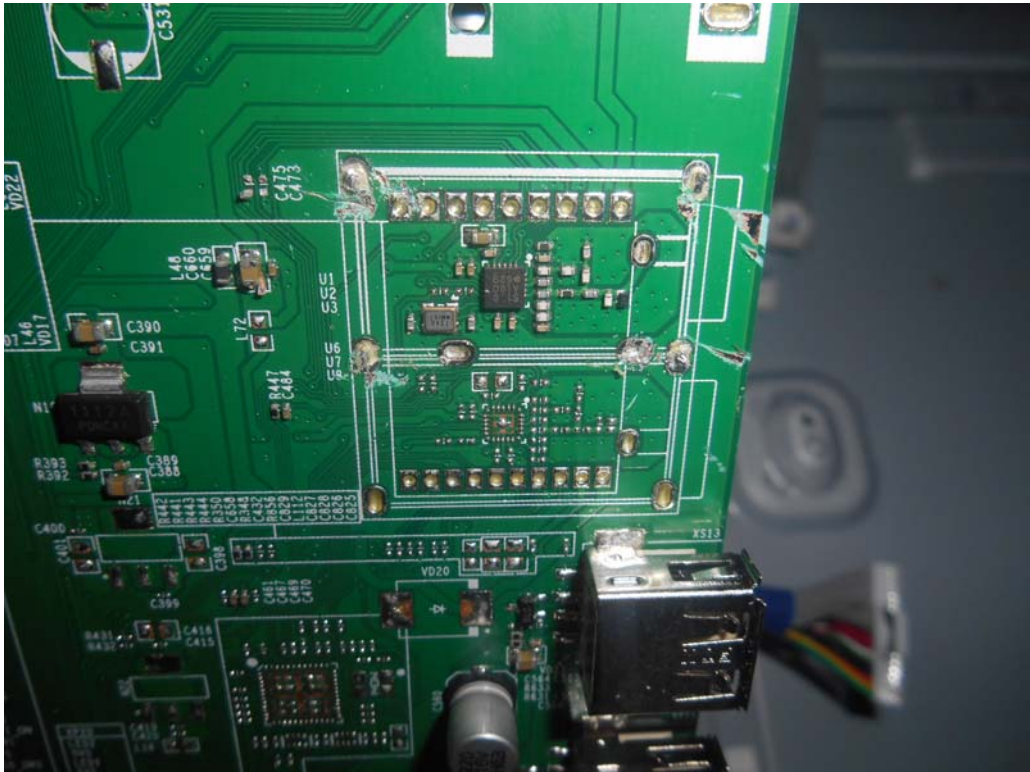


FIGURE 10
LED LCD TV (M/N: LC-70N9100U)
PANEL BOARD (COMPONENT SIDE)



FIGURE 11
LED LCD TV (M/N: LC-70N9100U)
PANEL BOARD (SOLDERED SIDE)

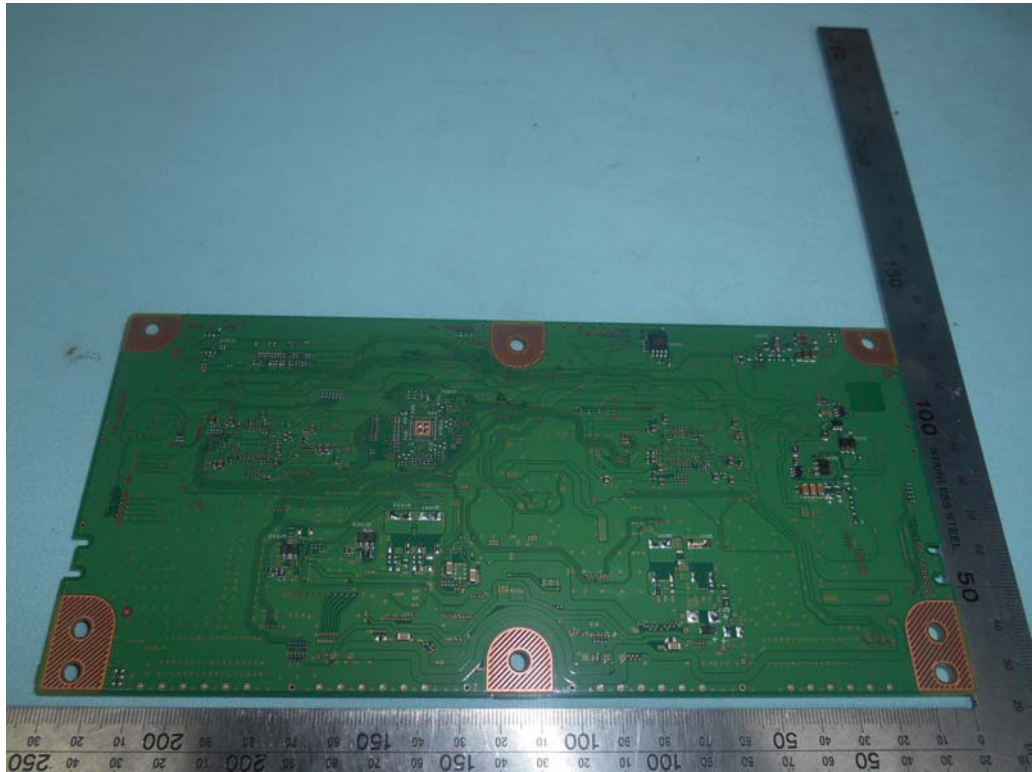


FIGURE 12
LED LCD TV (M/N: LC-70N9100U)
CHIP & CRYSTAL ON PANEL BOARD

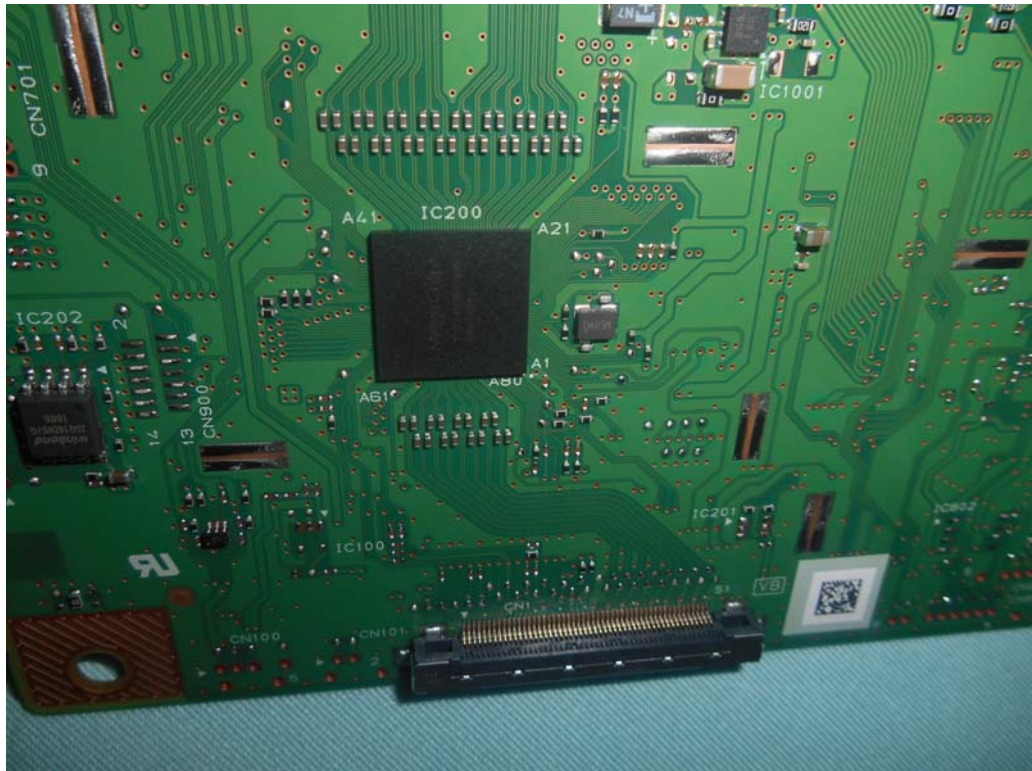


FIGURE 13
LED LCD TV (M/N: LC-70N9100U)
RF BOARD (COMPONENT SIDE)



FIGURE 14
LED LCD TV (M/N: LC-70N9100U)
RF BOARD (SOLDERED SIDE)



FIGURE 15
LED LCD TV (M/N: LC-70N9100U)
RF BOARD LABEL



FIGURE 16
LED LCD TV (M/N: LC-70N9100U)
RF BOARD COVER REMOVED



FIGURE 17
LED LCD TV (M/N: LC-70N9100U)
KEY BOARD (COMPONENT SIDE)

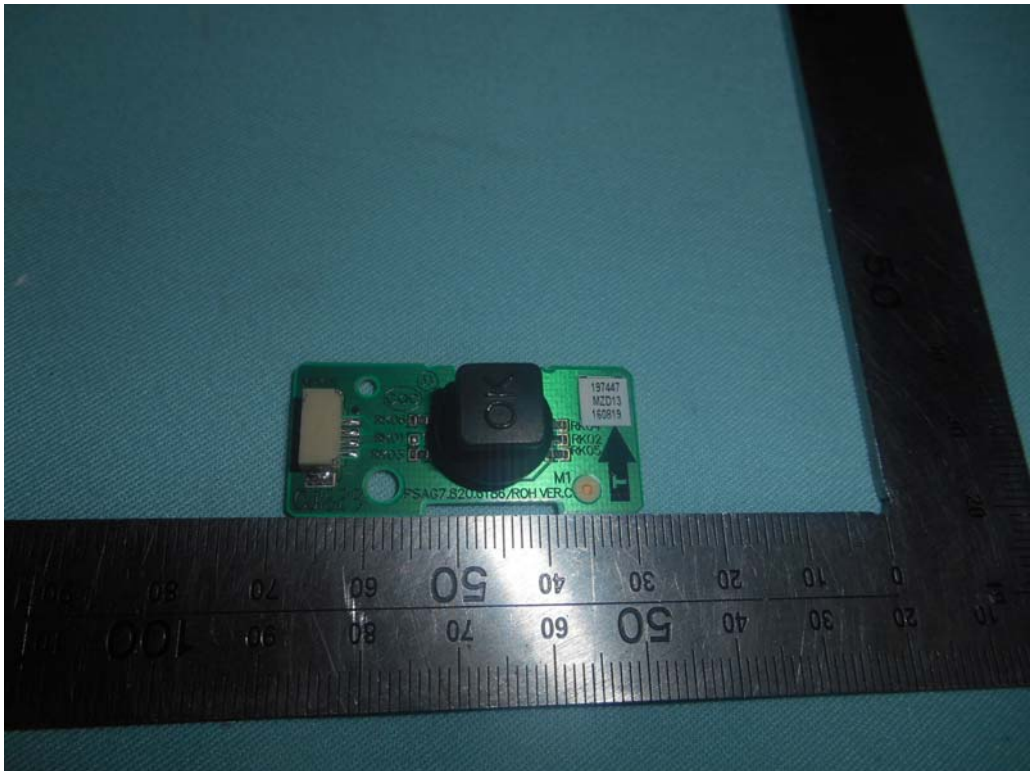


FIGURE 18
LED LCD TV (M/N: LC-70N9100U)
KEY BOARD (SOLDERED SIDE)

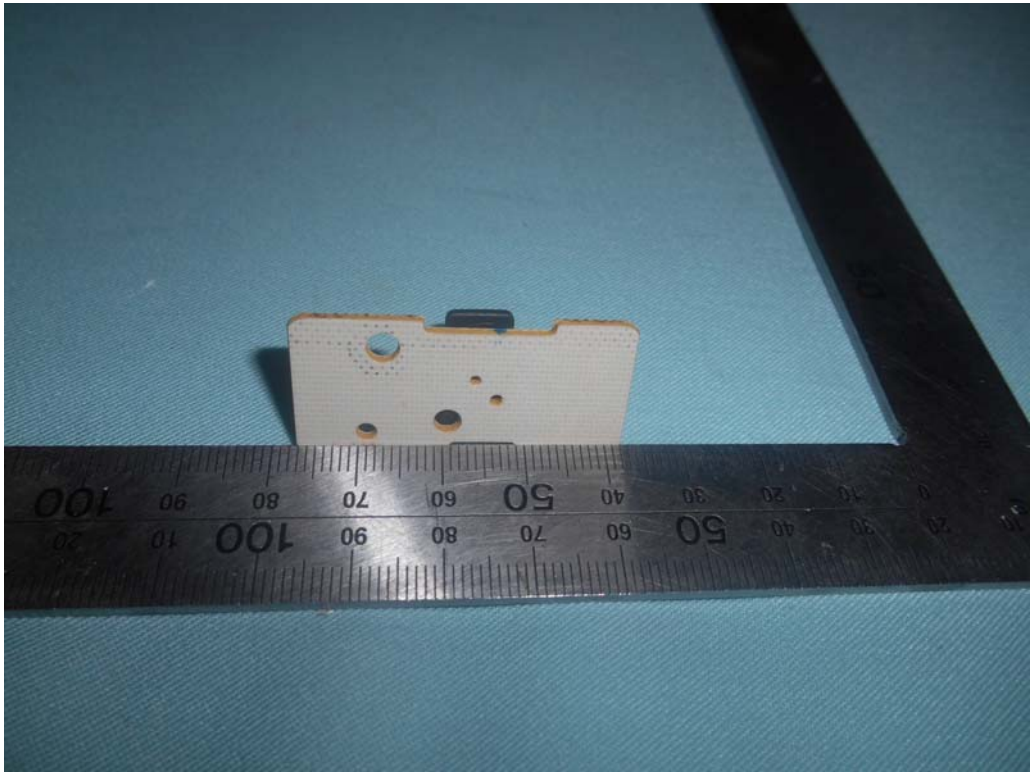
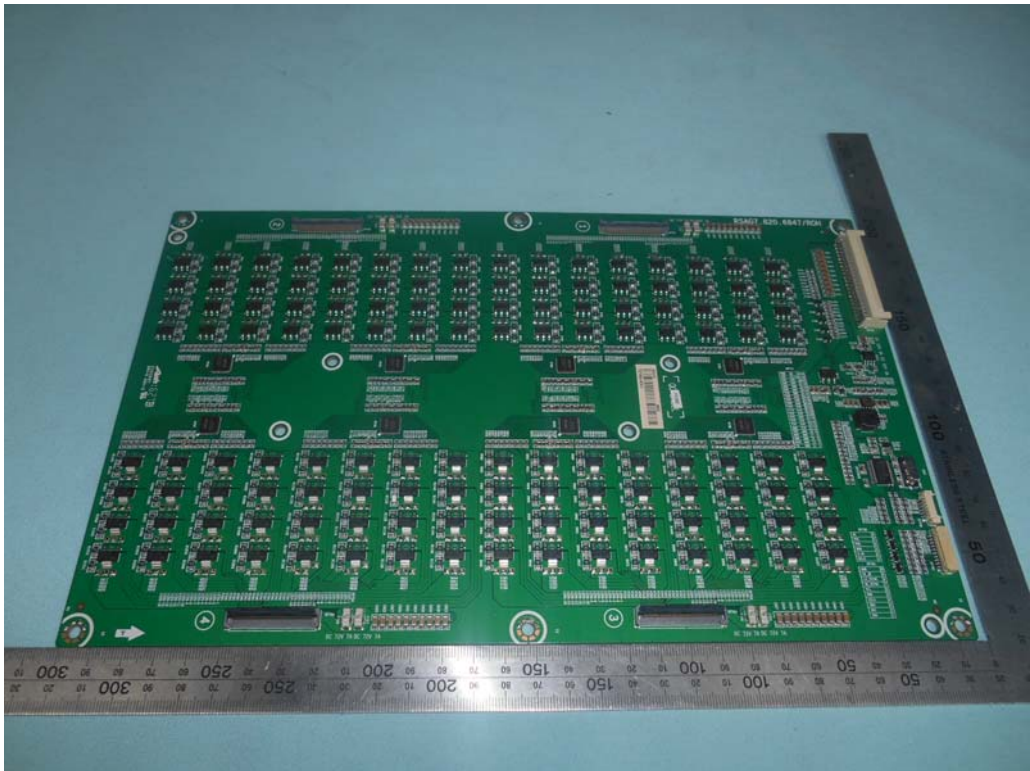
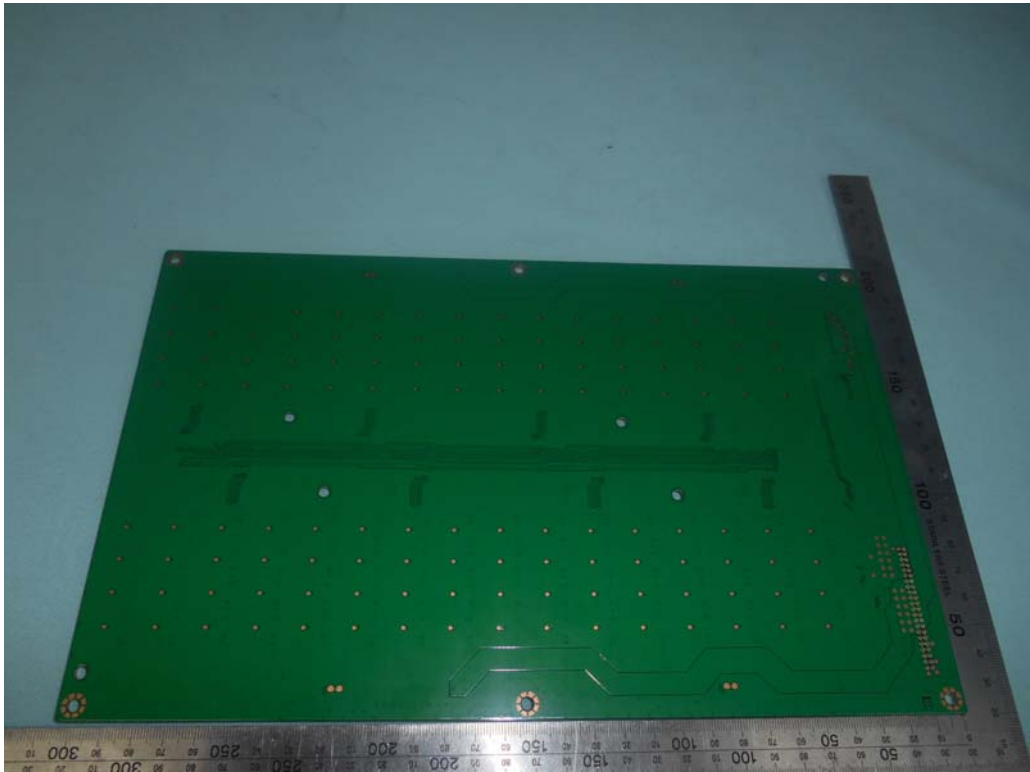


FIGURE 19
LED LCD TV (M/N: LC-70N9100U)
SIGNAL BOARD (COMPONENT SIDE)



*FIGURE 20
LED LCD TV (M/N: LC-70N9100U)
SIGNAL BOARD (SOLDERED SIDE)*



*FIGURE 21
LED LCD TV (M/N: LC-70N9100U)
CHIP & CRYSTAL# ON SIGNAL BOARD*

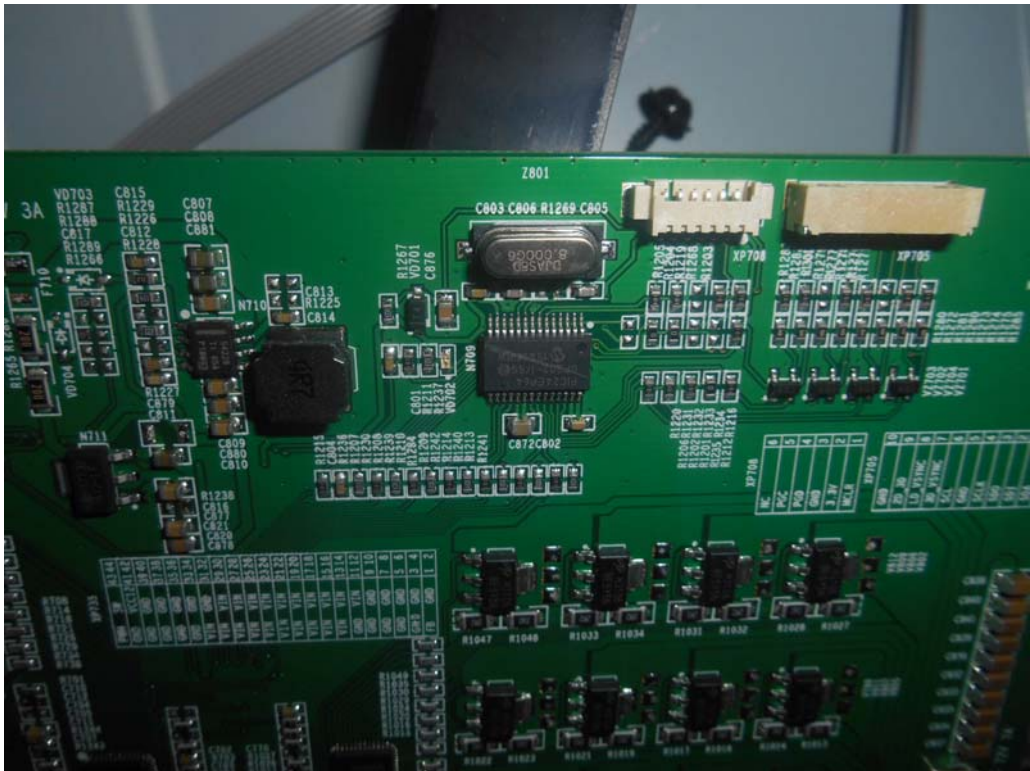


FIGURE 22
LED LCD TV (M/N: LC-70N9100U)
DEBUG #1

