

FIGURE 1
LED LCD TV (M/N: LC-75U)
LCD PANEL LABEL



FIGURE 2
LED LCD TV (M/N: LC-75U)
POWER BOARD (COMPONENT SIDE)

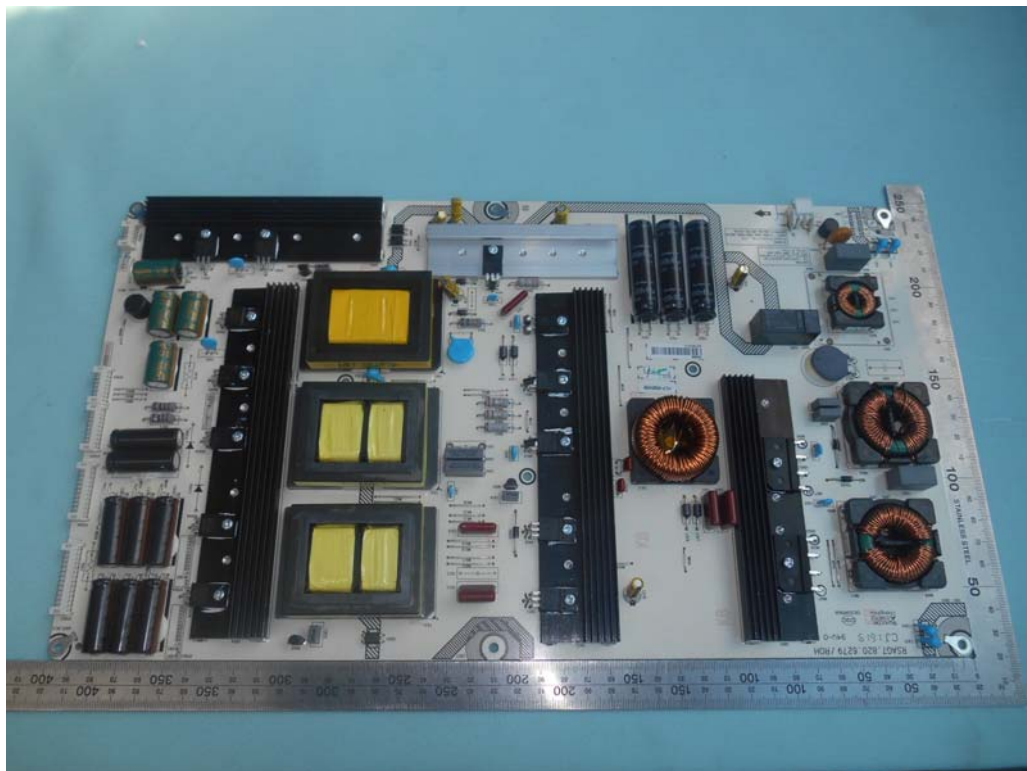


FIGURE 3
LED LCD TV (M/N: LC-75U)
POWER BOARD (SOLDERED SIDE)

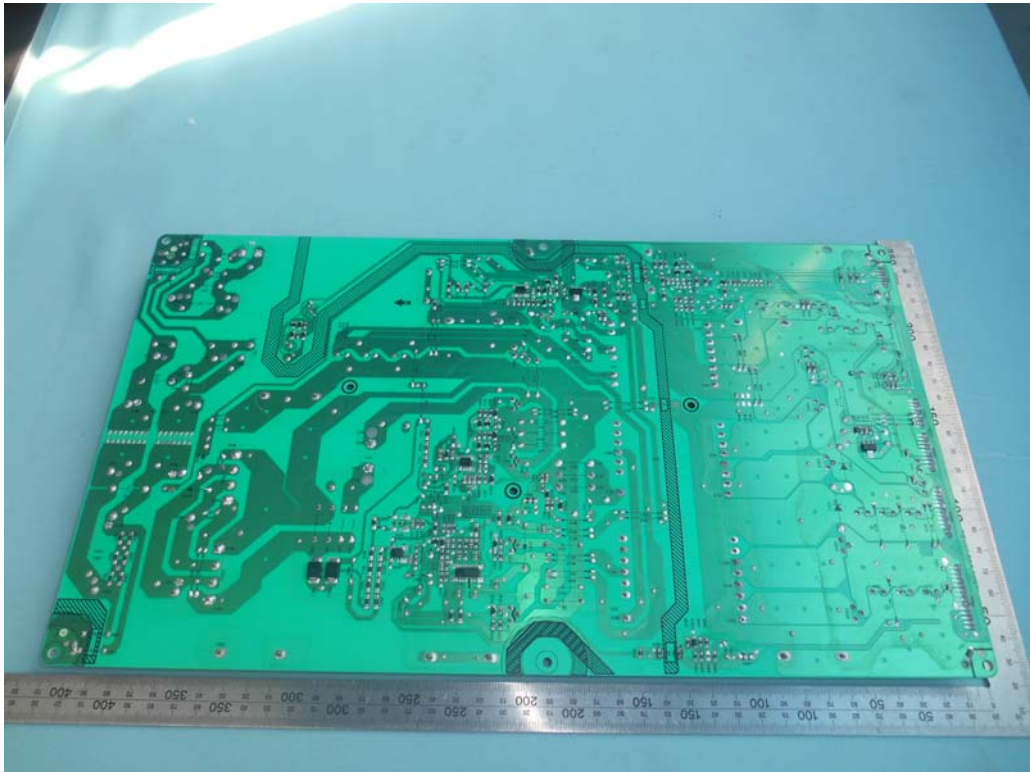


FIGURE 4
LED LCD TV (M/N: LC-75U)
AC BOARD (COMPONENT SIDE)

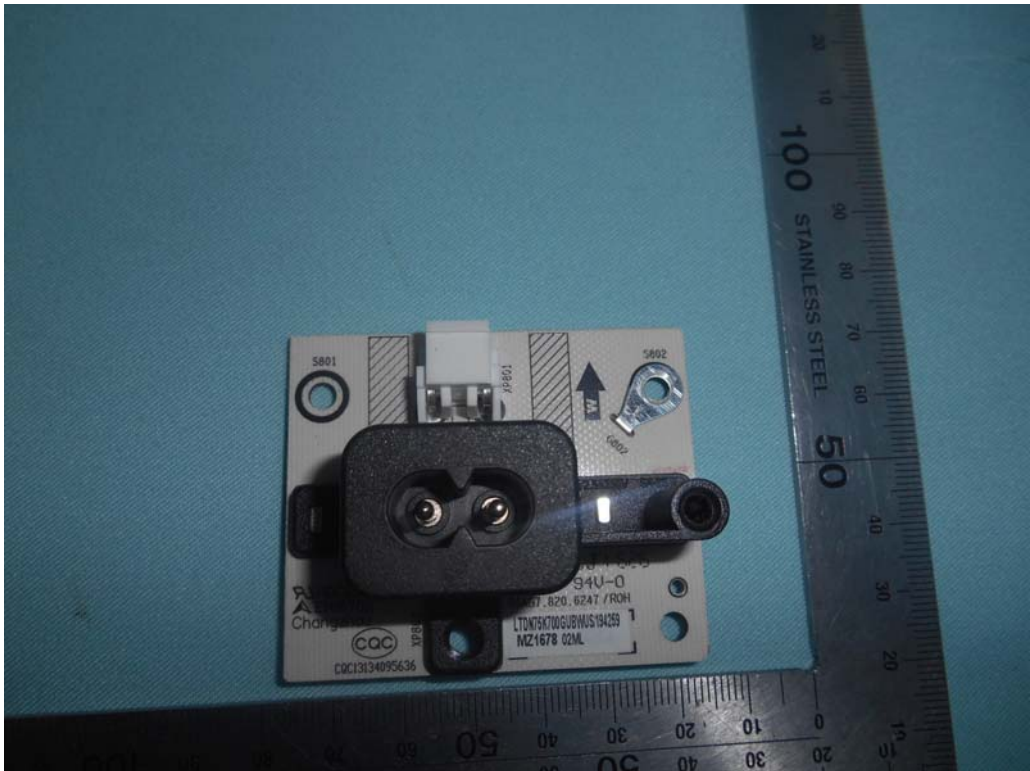


FIGURE 5
LED LCD TV (M/N: LC-75U)
AC BOARD (SOLDERED SIDE)

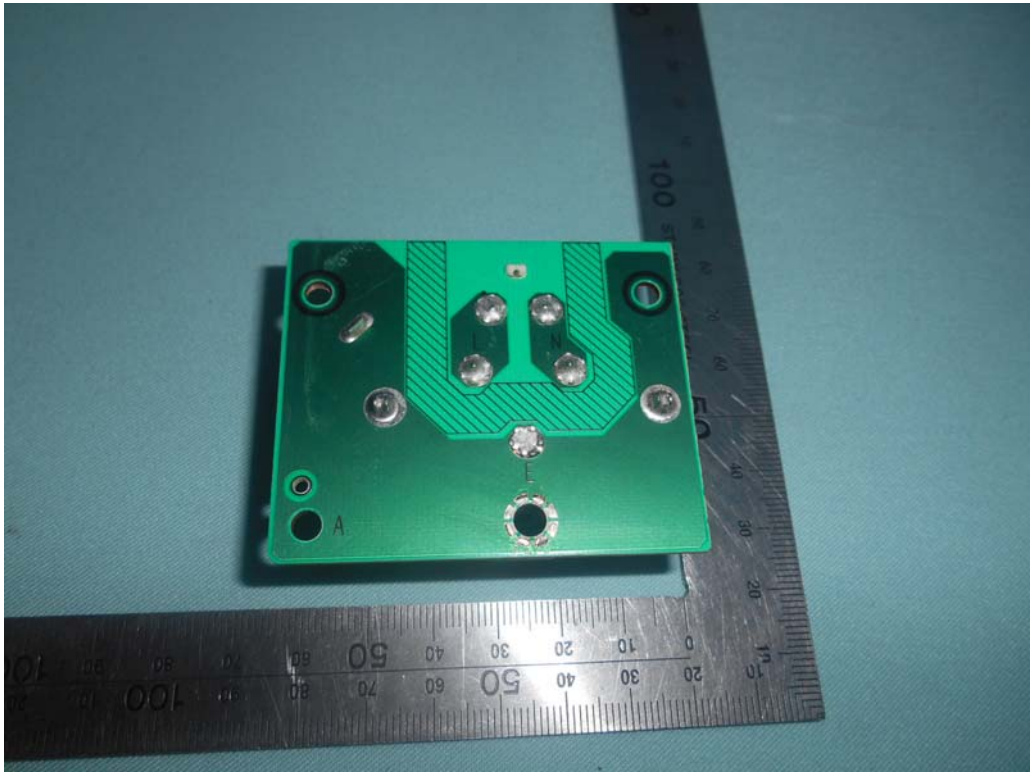


FIGURE 6
LED LCD TV (M/N: LC-75U)
MAIN BOARD (COMPONENT SIDE)



FIGURE 7
LED LCD TV (M/N: LC-75U)
MAIN BOARD (SOLDERED SIDE)

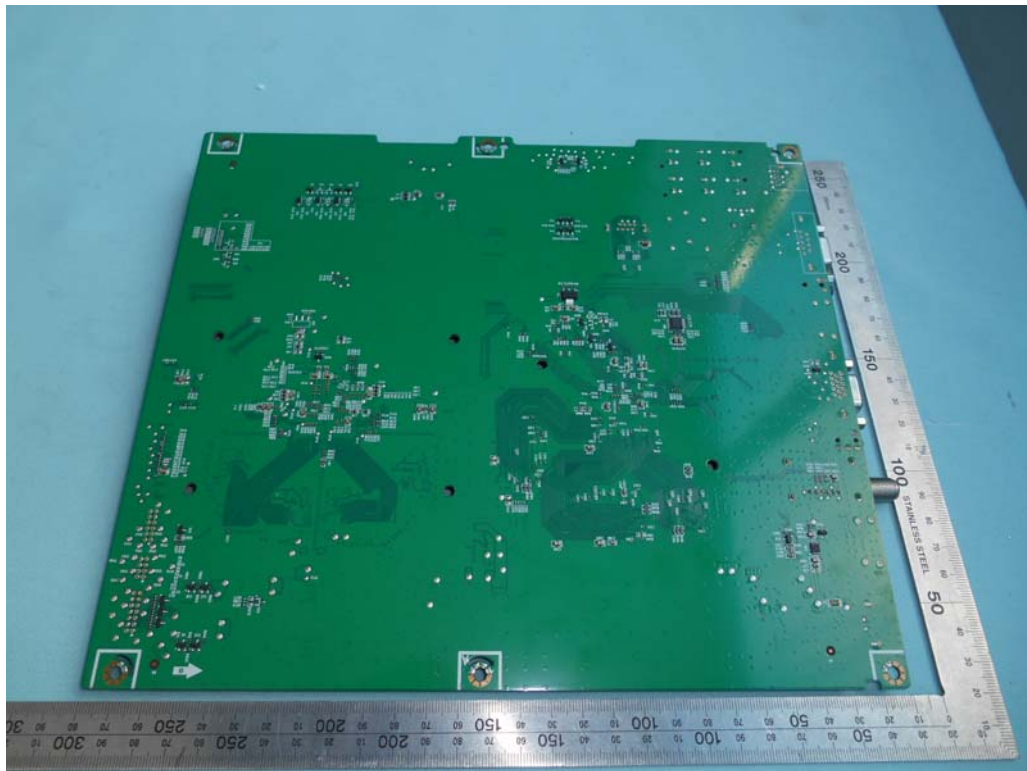


FIGURE 8
LED LCD TV (M/N: LC-75U)
CHIP AND CRYSTAL#1 ON MAIN BOARD



FIGURE 9
LED LCD TV (M/N: LC-75U)
CHIP AND CRYSTAL #2 ON MAIN BOARD



FIGURE 10
LED LCD TV (M/N: LC-75U)
TUNER

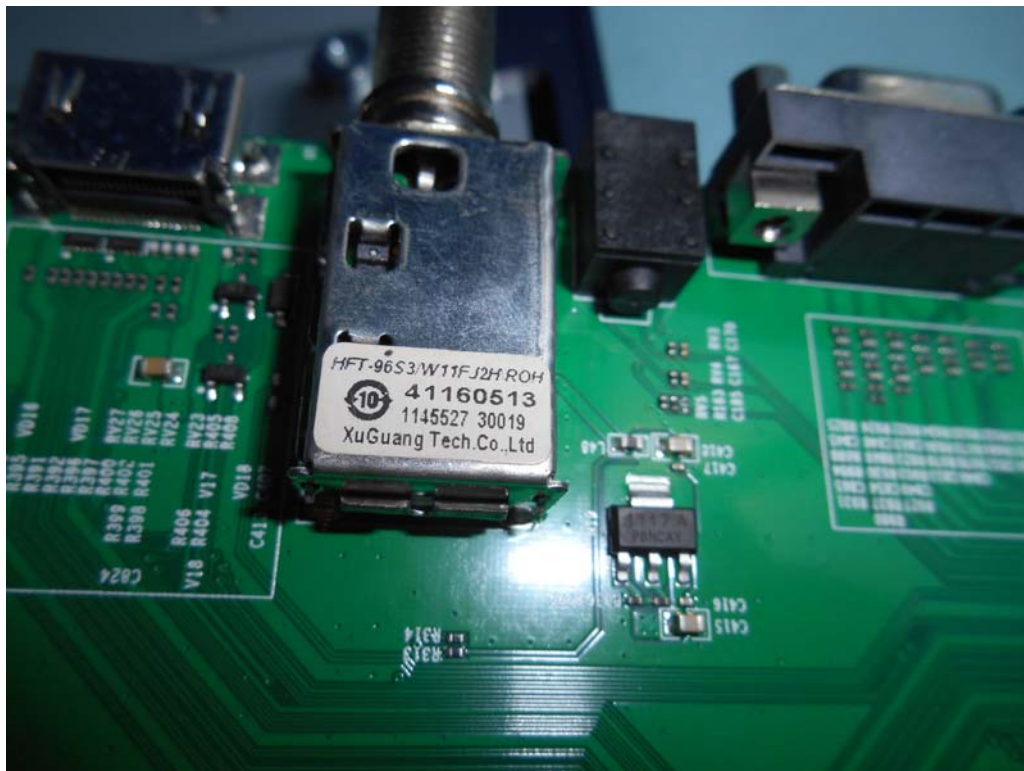


FIGURE 11
LED LCD TV (M/N: LC-75U)
TUNER BOARD (COMPONENT SIDE)



FIGURE 12
LED LCD TV (M/N: LC-75U)
TUNER BOARD (SOLDERED SIDE)

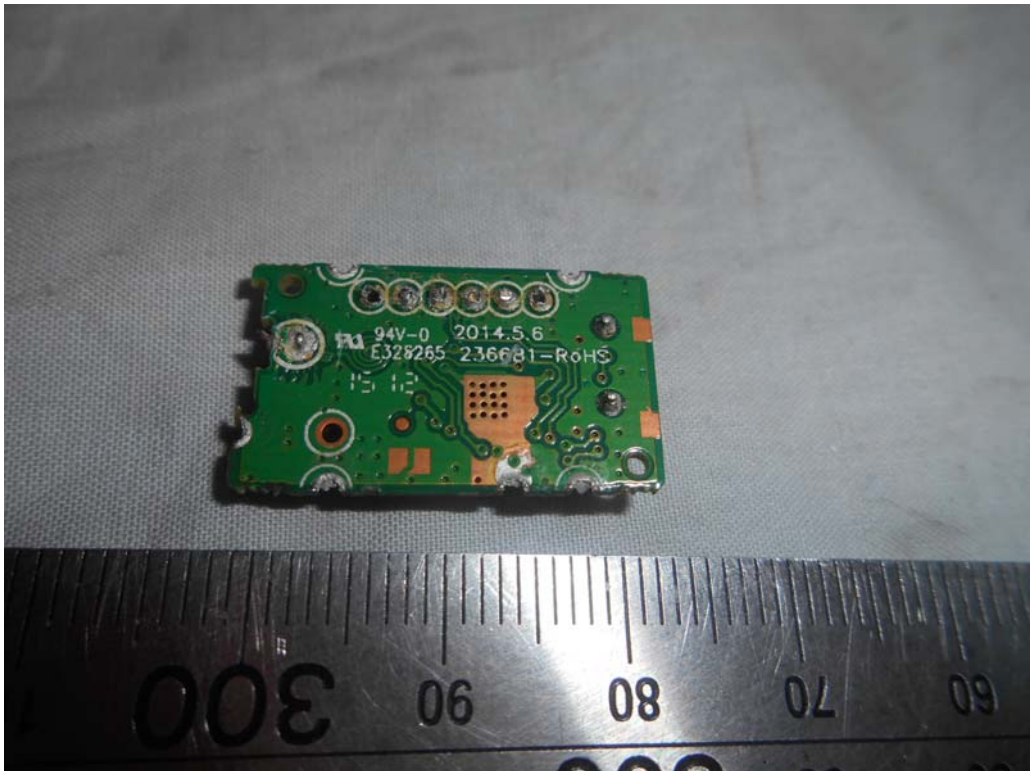


FIGURE 13
LED LCD TV (M/N: LC-75U)
KEY BOARD (COMPONENT SIDE)

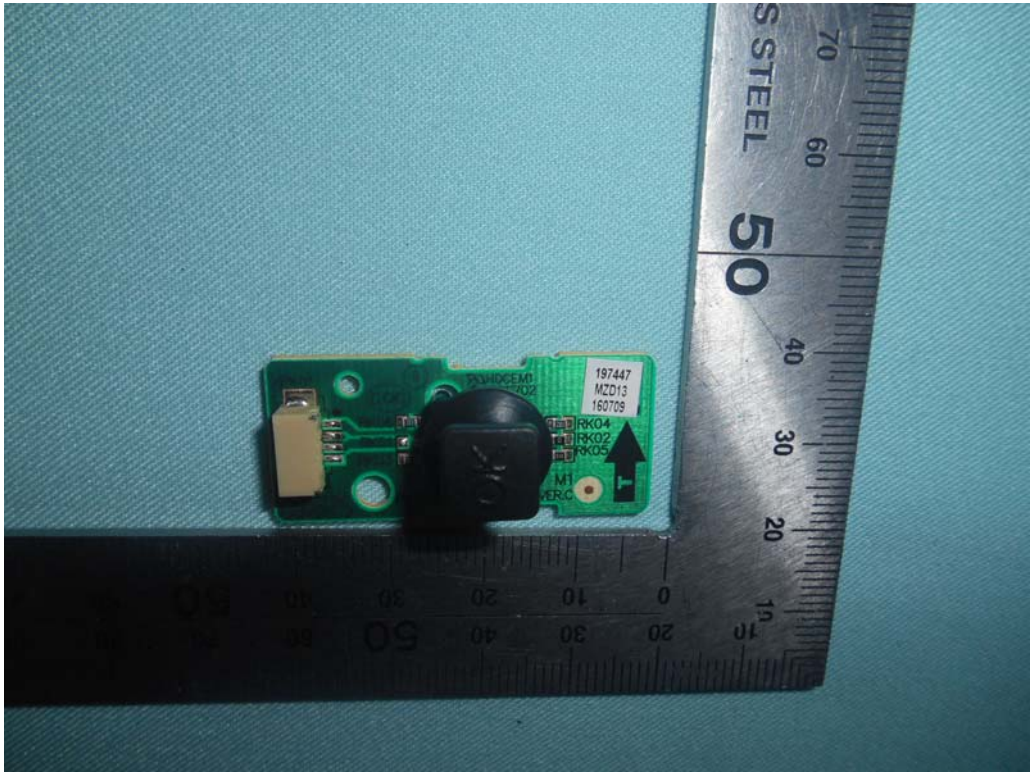


FIGURE 14
LED LCD TV (M/N: LC-75U)
KEY BOARD (SOLDERED SIDE)

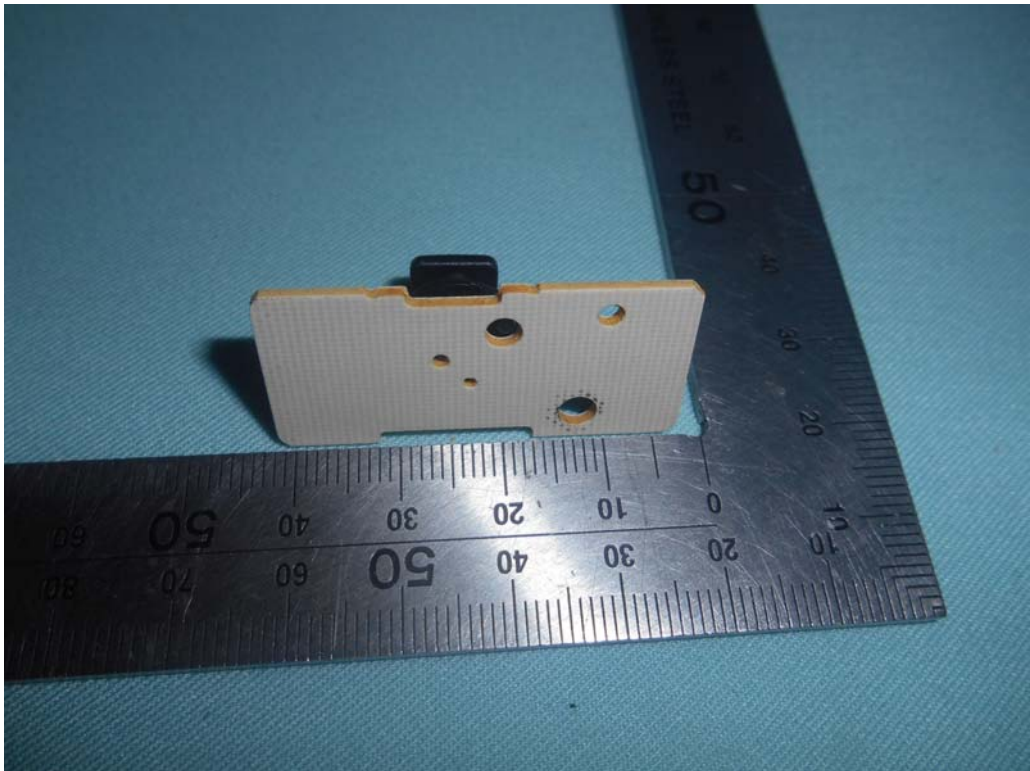


FIGURE 15
LED LCD TV (M/N: LC-75U)
PANEL BOARD (COMPONENT SIDE)



FIGURE 16
LED LCD TV (M/N: LC-75U)
PANEL BOARD (SOLDERED SIDE)

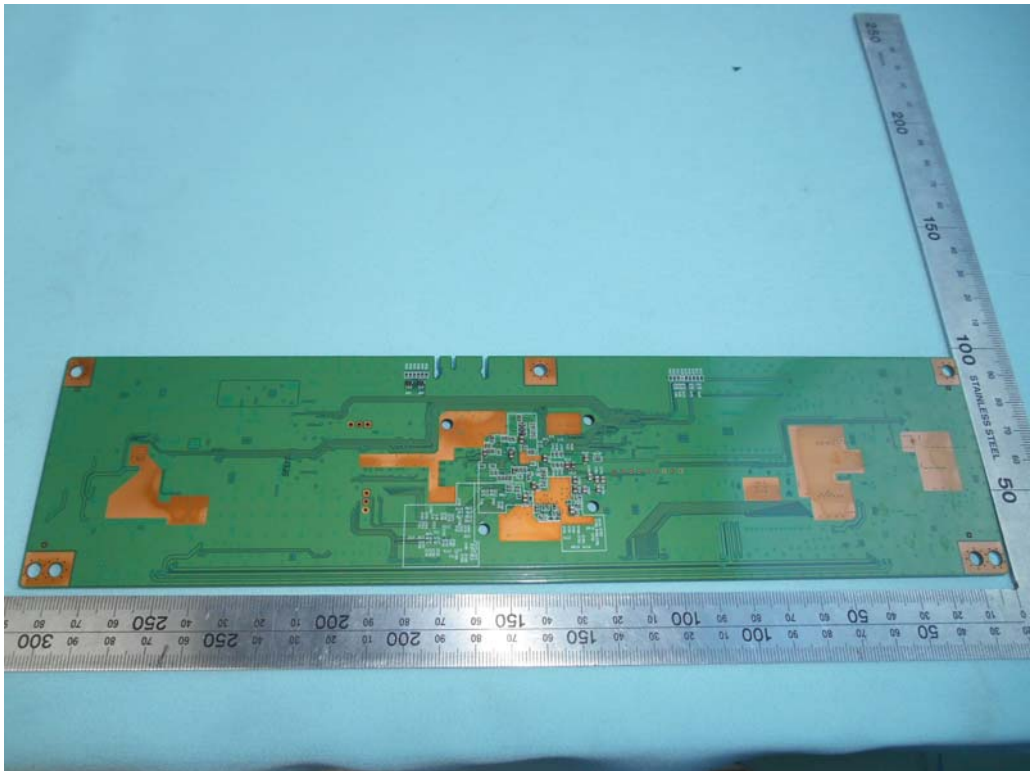


FIGURE 17
LED LCD TV (M/N: LC-75U)
CHIP AND CRYSTAL ON PANEL BOARD

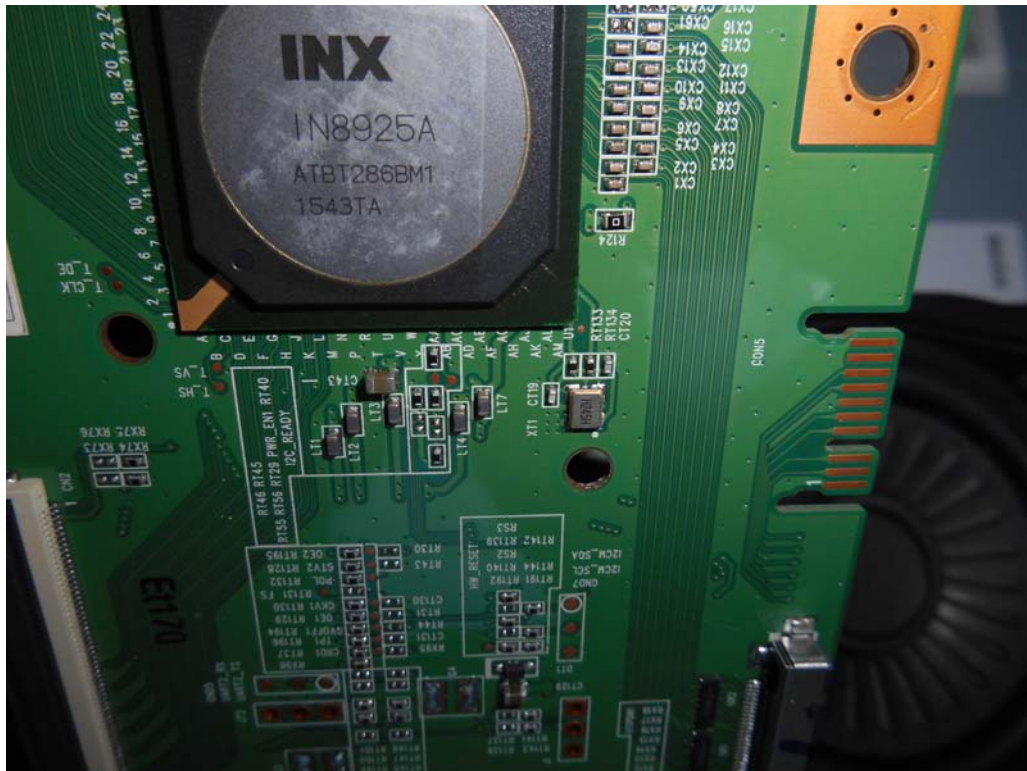


FIGURE 18
LED LCD TV (M/N: LC-75U)
SIGNAL BOARD (COMPONENT SIDE)

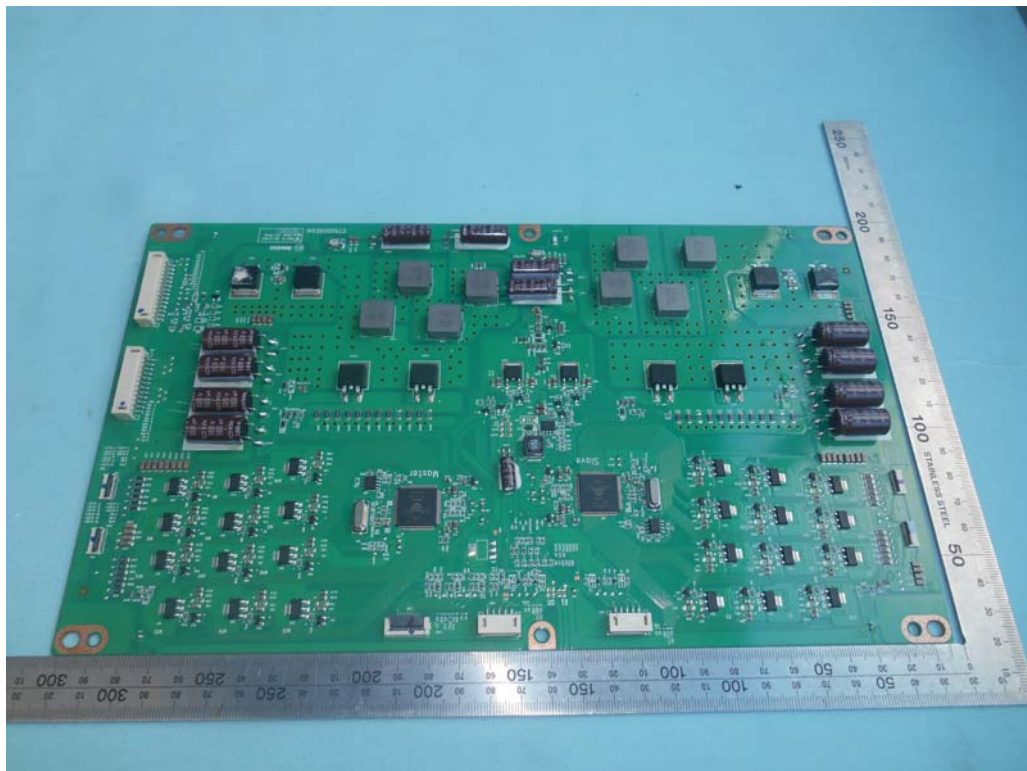


FIGURE 19
 LED LCD TV (M/N: LC-75U)
 SIGNAL BOARD (SOLDERED SIDE)

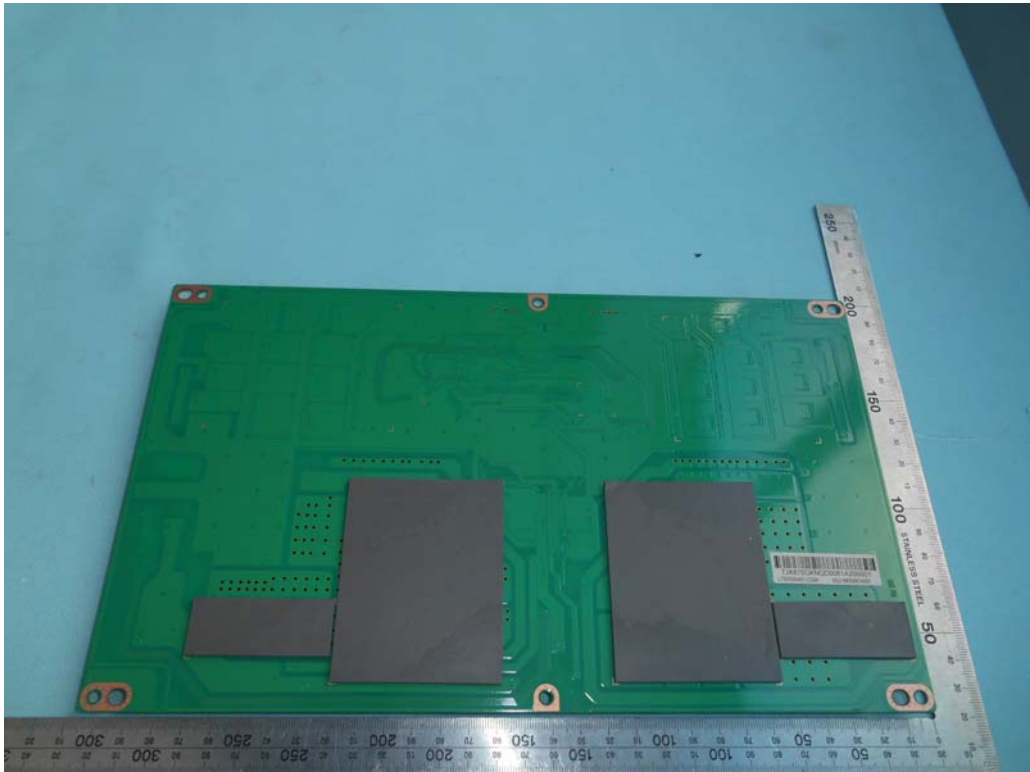


FIGURE 20
 LED LCD TV (M/N: LC-75U)
 CHIP AND CRYSTAL #1 ON SIGNAL BOARD

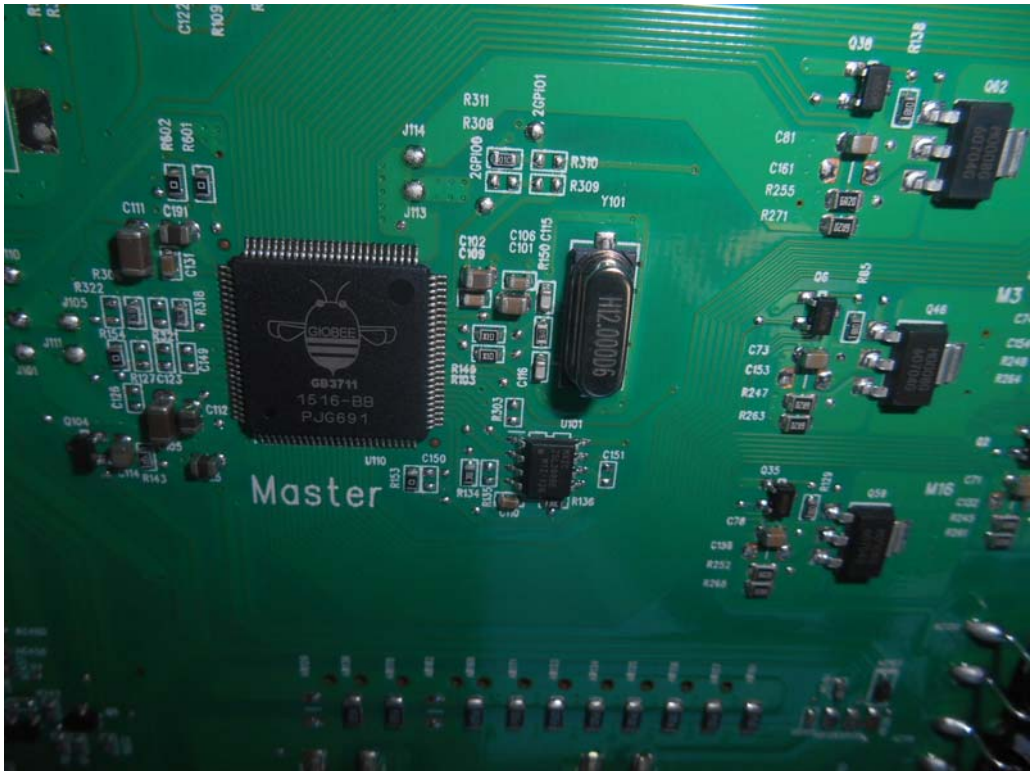


FIGURE 21
LED LCD TV (M/N: LC-75U)
CHIP AND CRYSTAL #2 ON SIGNAL BOARD

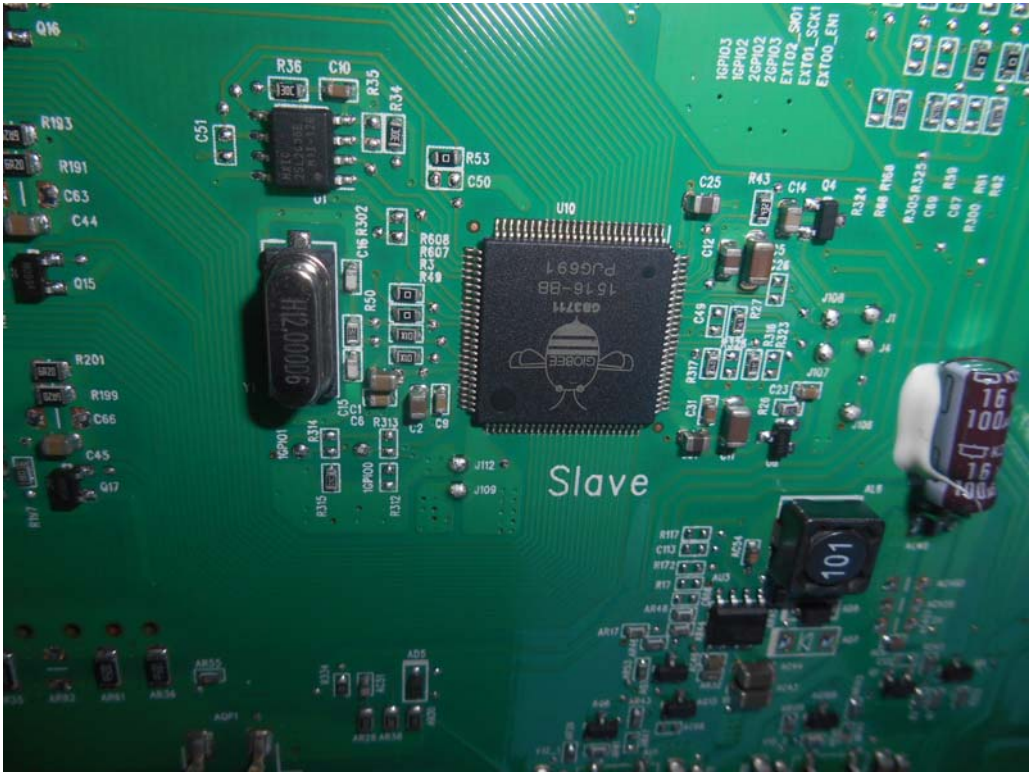


FIGURE 22
LED LCD TV (M/N: LC-75U)
DEBUG #1

