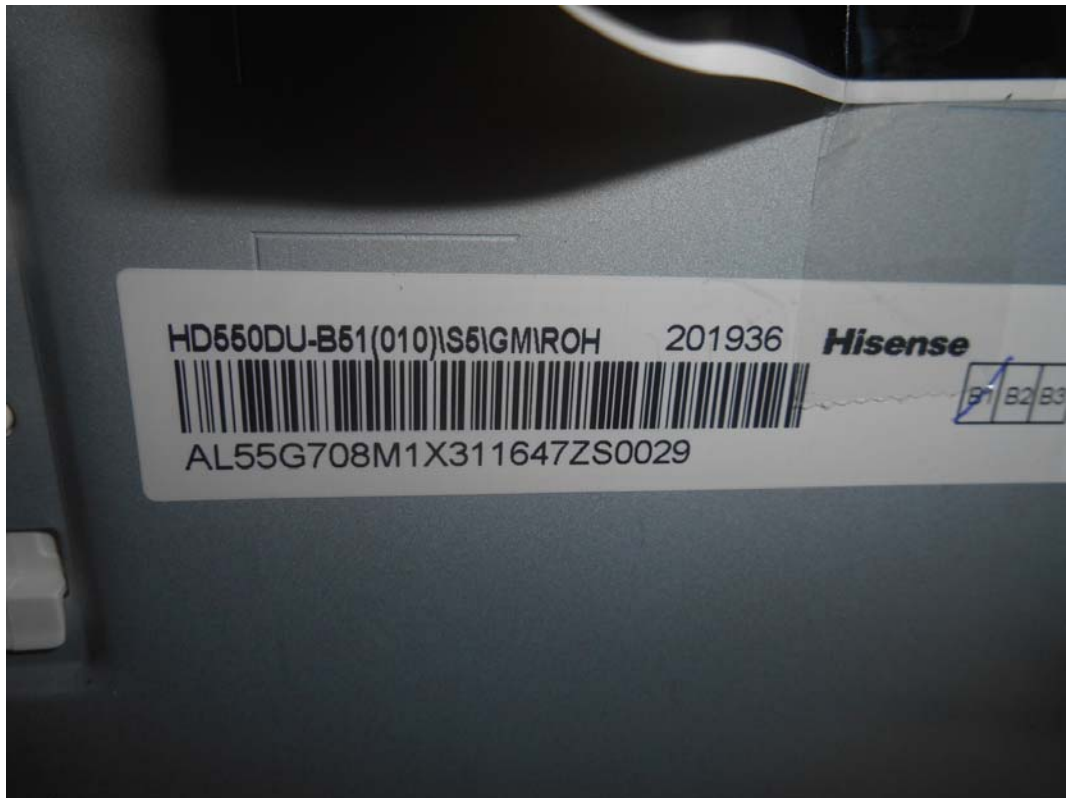


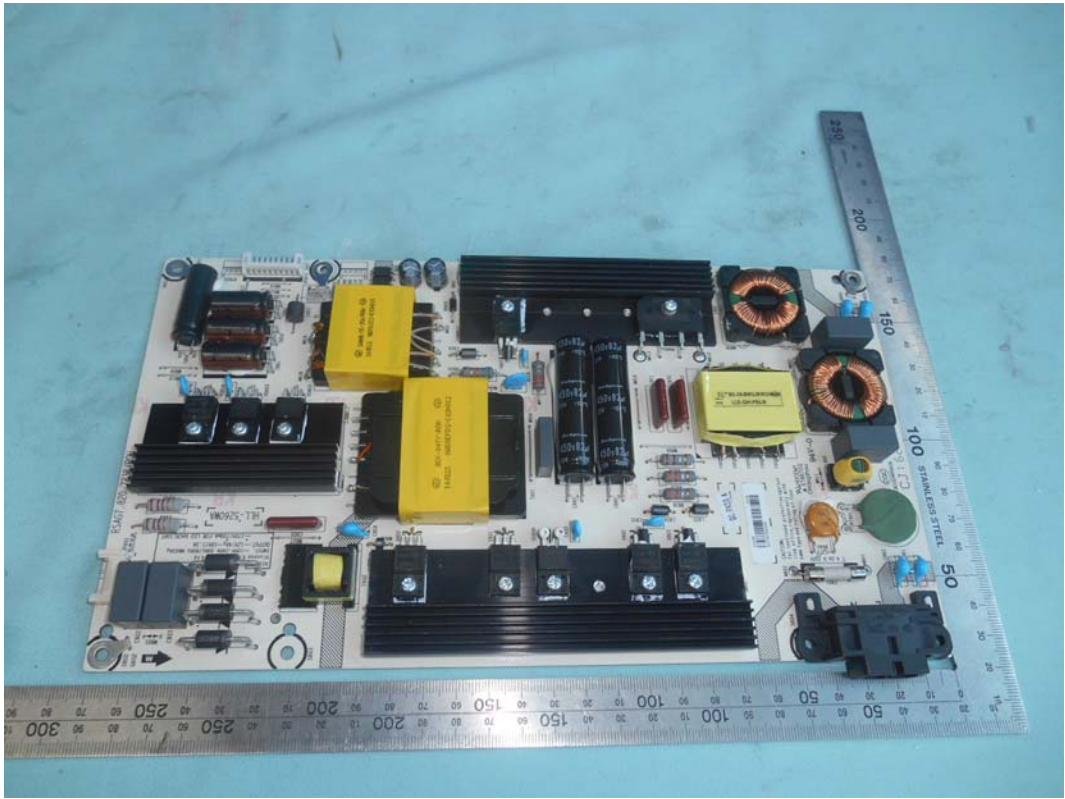
*FIGURE 1*  
*LED LCD TV (M/N: LC-55U)*  
*COVER REMOVED*



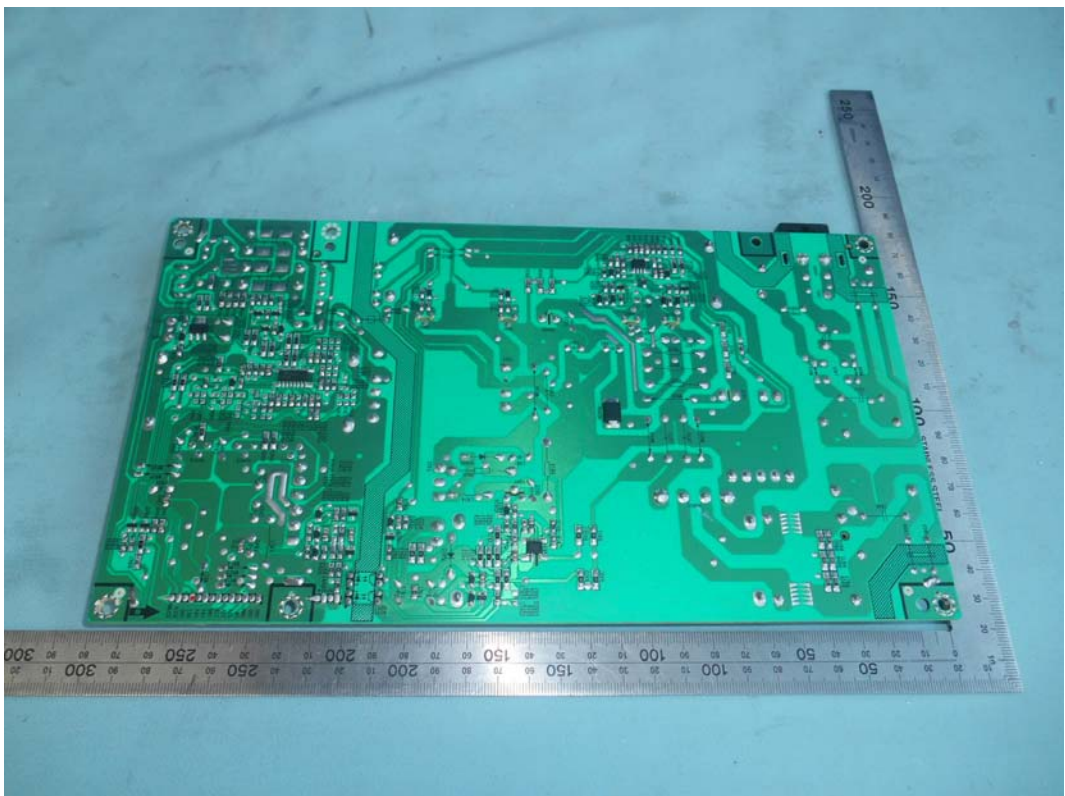
FIGURE 2  
LED LCD TV (M/N: LC-55U)  
LCD PANEL LABEL



*FIGURE 3*  
*LED LCD TV (M/N: LC-55U)*  
*POWER BOARD (COMPONENT SIDE)*



*FIGURE 4*  
*LED LCD TV (M/N: LC-55U)*  
*POWER BOARD (SOLDERED SIDE)*



*FIGURE 5  
LED LCD TV (M/N: LC-55U)  
MAIN BOARD (COMPONENT SIDE)*



*FIGURE 6  
LED LCD TV (M/N: LC-55U)  
MAIN BOARD (SOLDERED SIDE)*

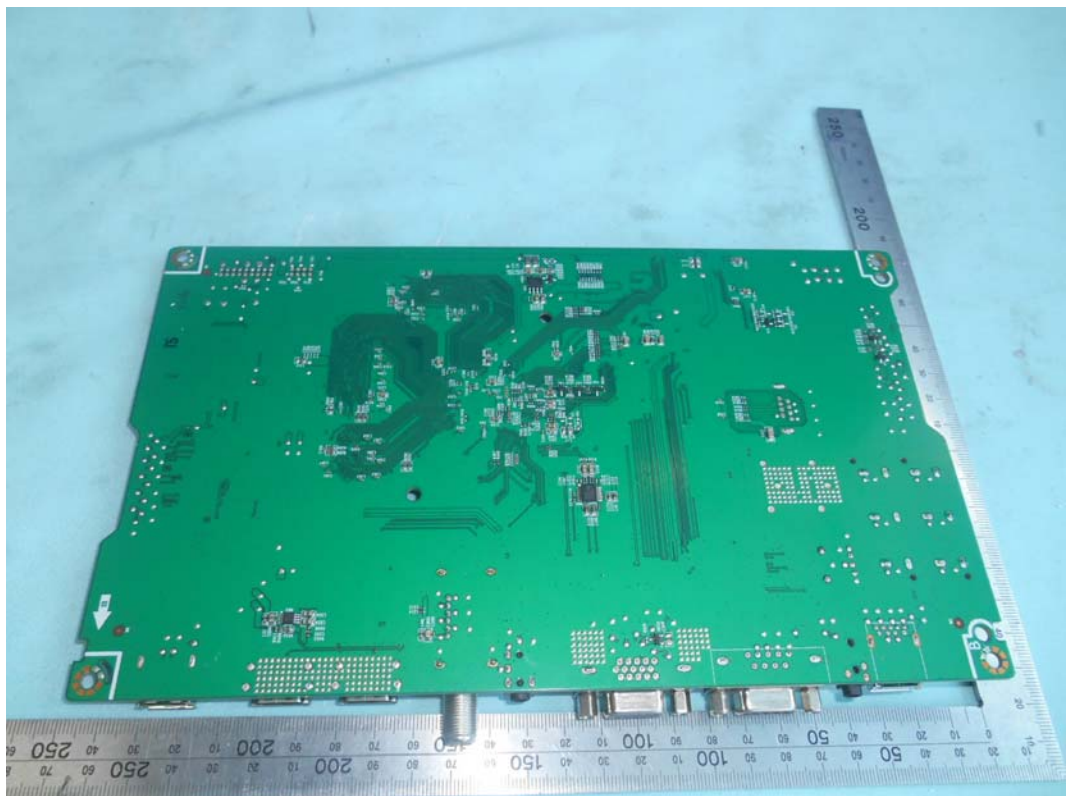
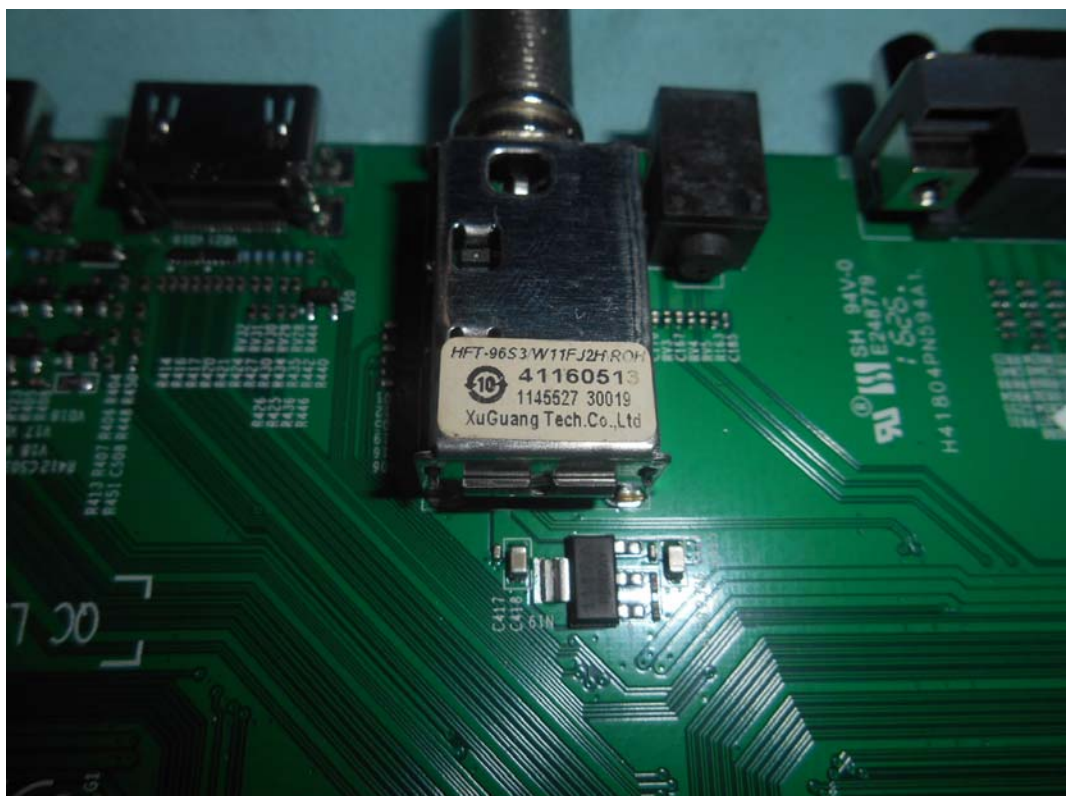


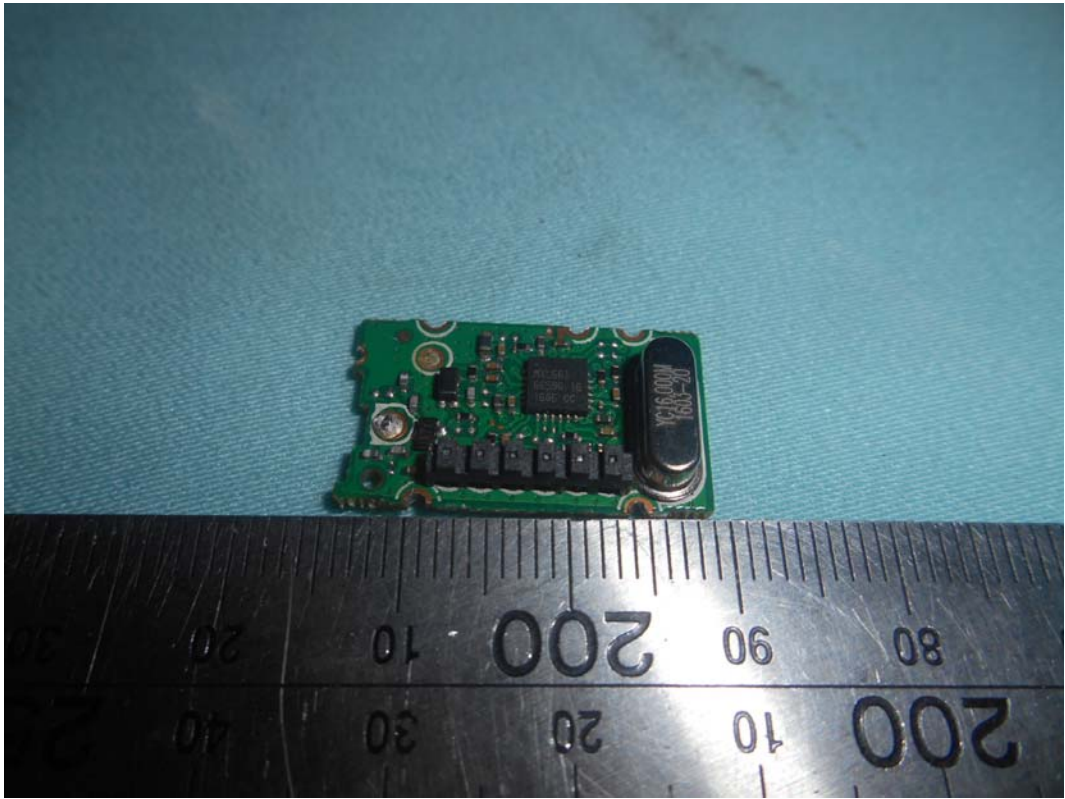
FIGURE 7  
LED LCD TV (M/N: LC-55U)  
CHIP AND CRYSTAL ON MAIN BOARD



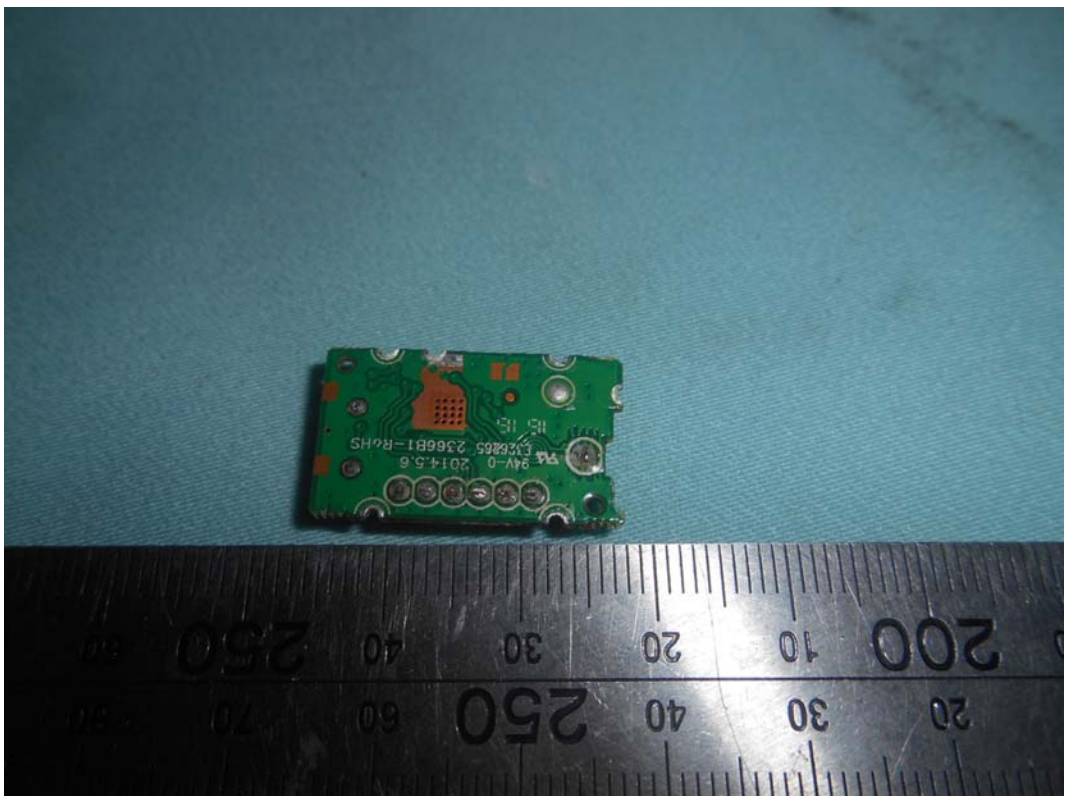
FIGURE 8  
LED LCD TV (M/N: LC-55U)  
TUNER



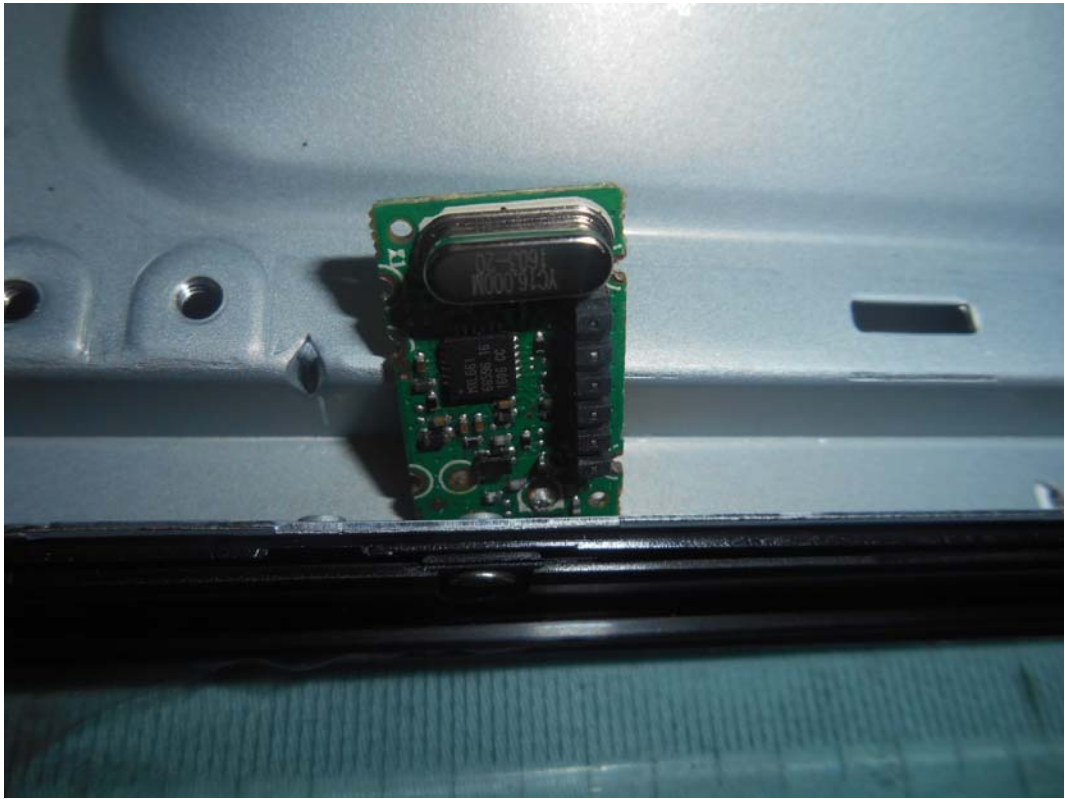
*FIGURE 9*  
*LED LCD TV (M/N: LC-55U)*  
*TUNER BOARD (COMPONENT SIDE)*



*FIGURE 10*  
*LED LCD TV (M/N: LC-55U)*  
*TUNER BOARD (SOLDERED SIDE)*



*FIGURE 11*  
*LED LCD TV (M/N: LC-55U)*  
*TUNER & CRYSTAL ON MAIN BOARD*



*FIGURE 12*  
*LED LCD TV (M/N: LC-55U)*  
*PANEL BOARD (COMPONENT SIDE)*



*FIGURE 13*  
*LED LCD TV (M/N: LC-55U)*  
*PANEL BOARD (SOLDERED SIDE)*

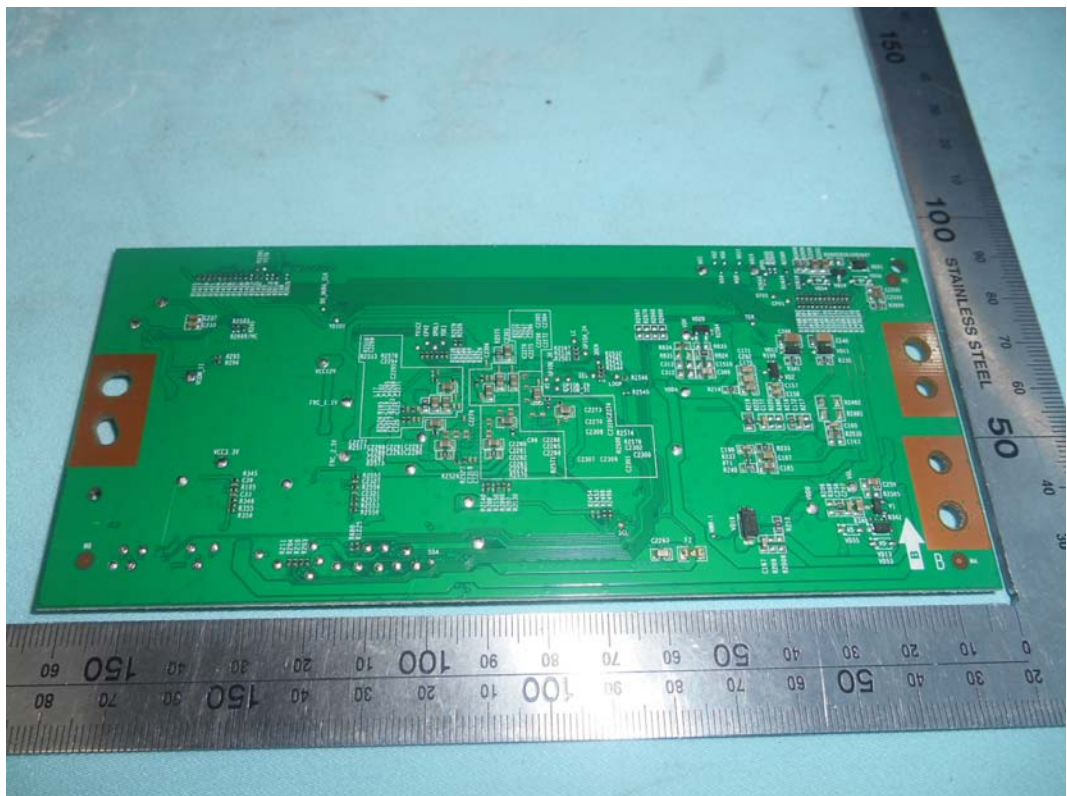
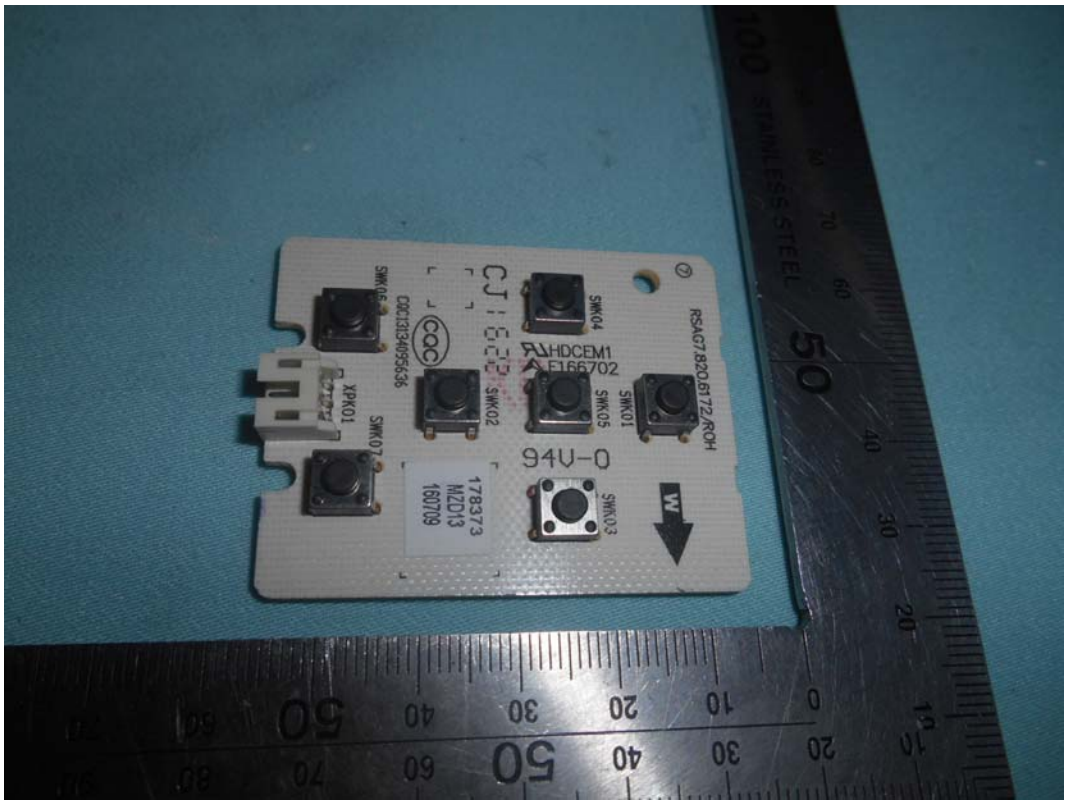




FIGURE 14  
LED LCD TV (M/N: LC-55U)  
CHIP ON PANEL BOARD



*FIGURE 15*  
*LED LCD TV (M/N: LC-55U)*  
*KEY BOARD (COMPONENT SIDE)*



*FIGURE 16*  
*LED LCD TV (M/N: LC-55U)*  
*KEY BOARD (SOLDERED SIDE)*

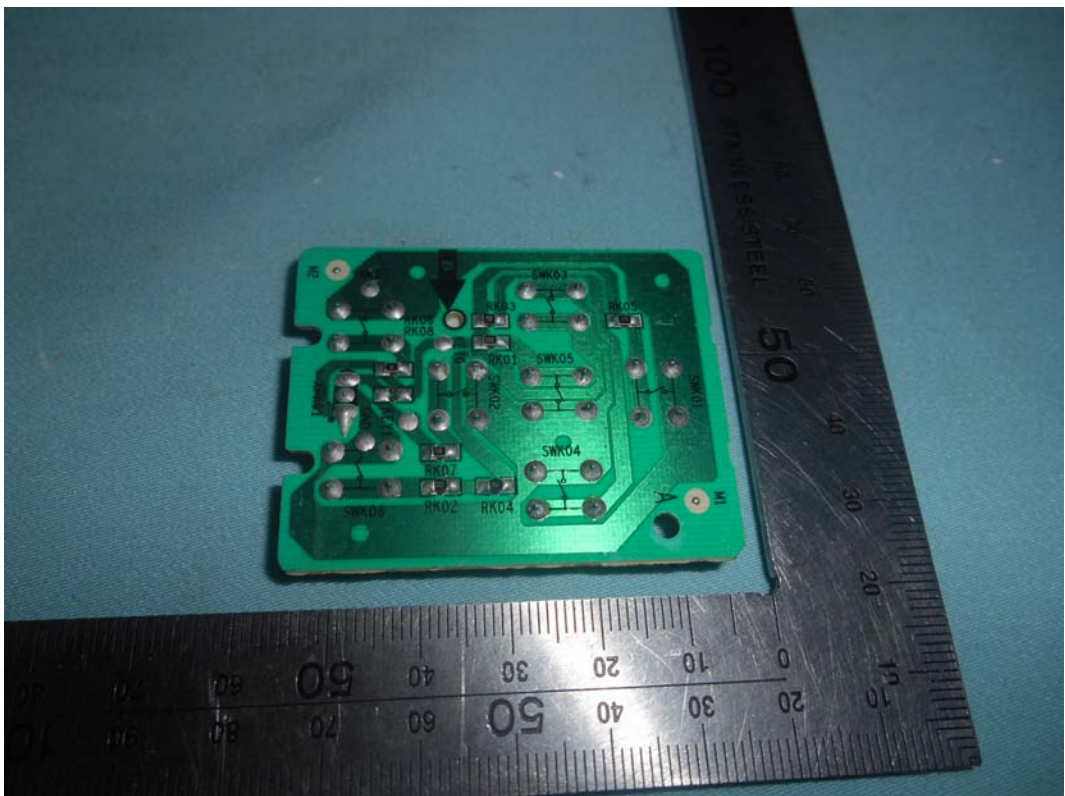


FIGURE 17  
LED LCD TV (M/N: LC-55U)  
IR BOARD (COMPONENT SIDE)

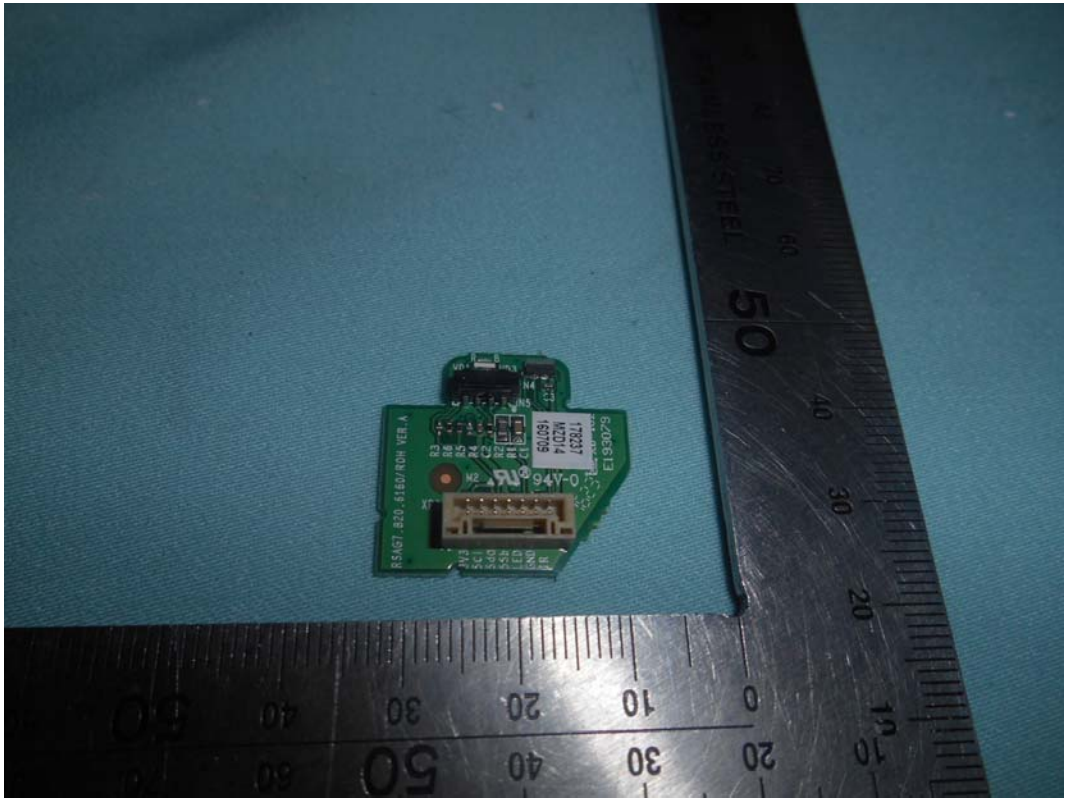


FIGURE 18  
LED LCD TV (M/N: LC-55U)  
IR BOARD (SOLDERED SIDE)

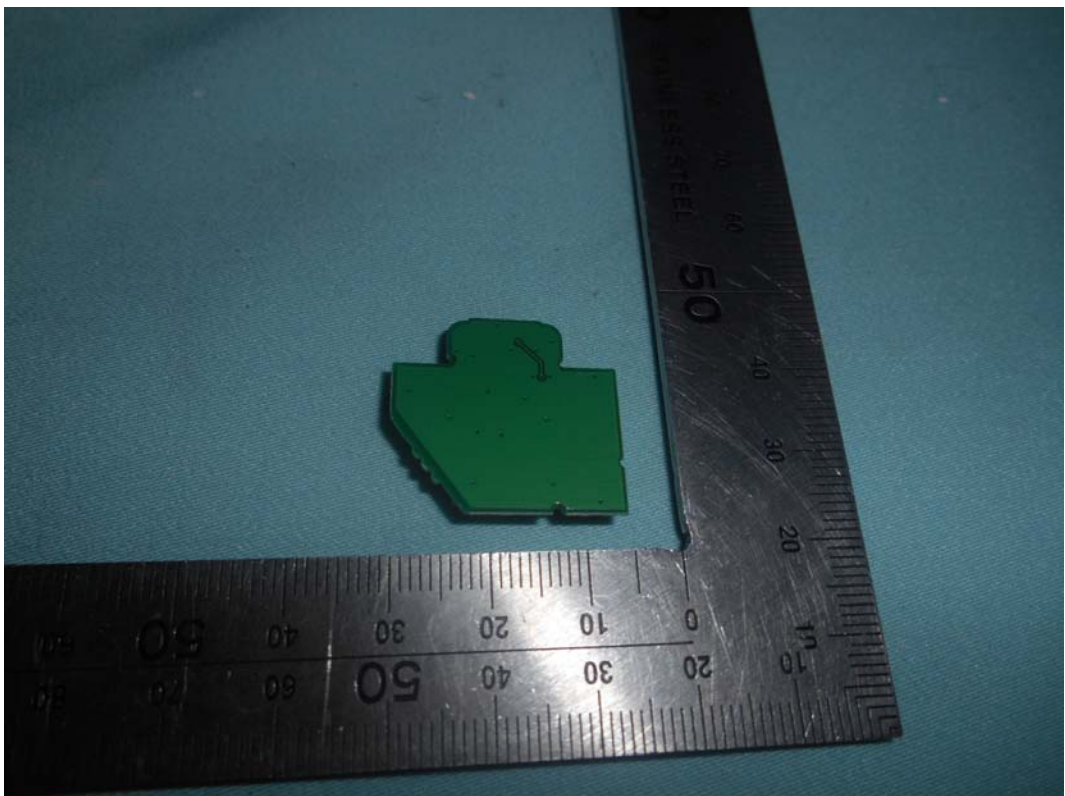


FIGURE 19  
LED LCD TV (M/N: LC-55U)  
RF BOARD (COMPONENT SIDE)

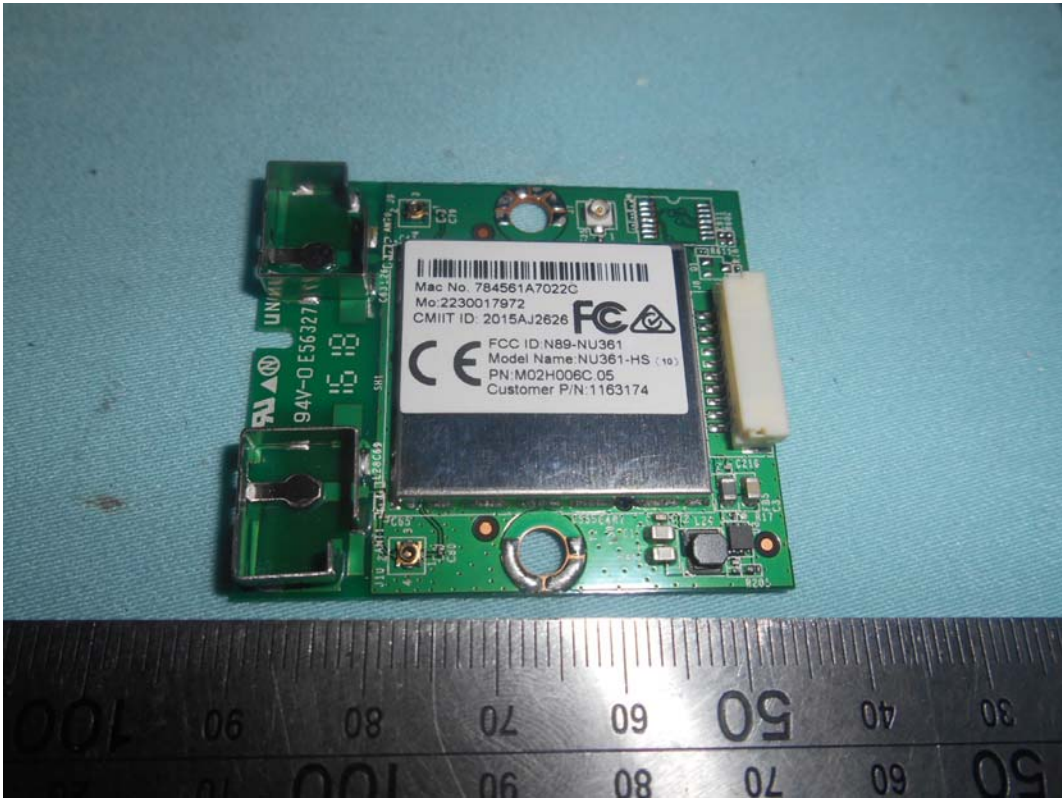


FIGURE 20  
LED LCD TV (M/N: LC-55U)  
RF BOARD (SOLDERED SIDE)

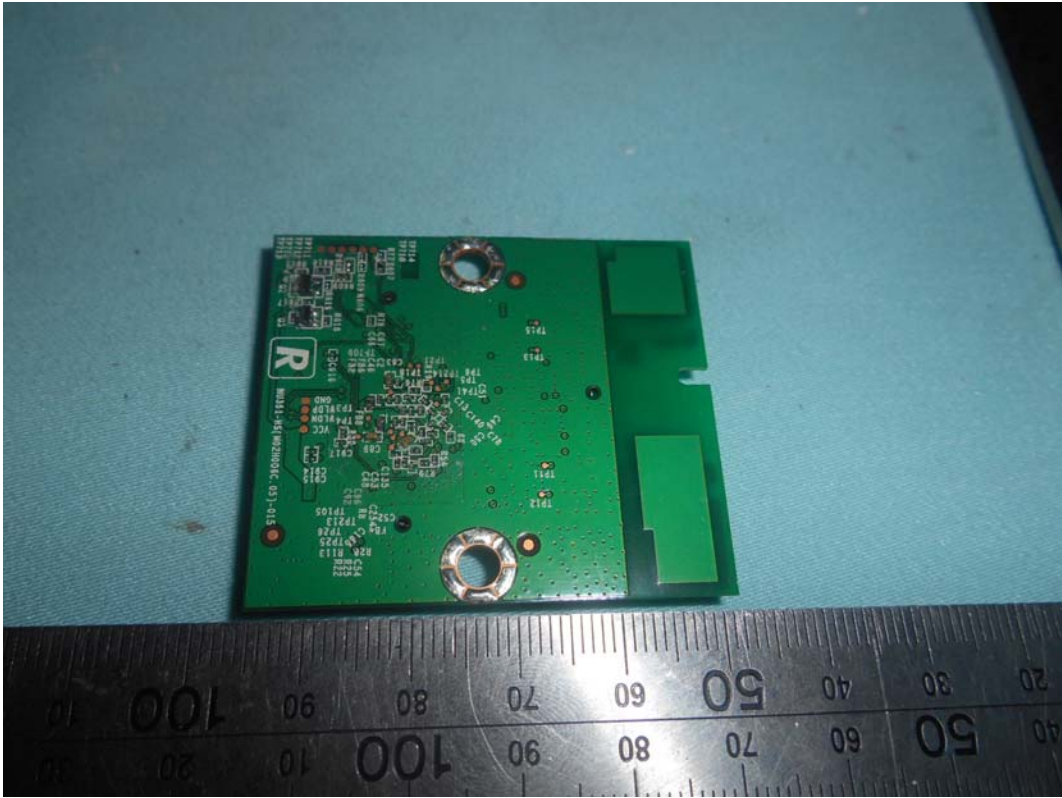
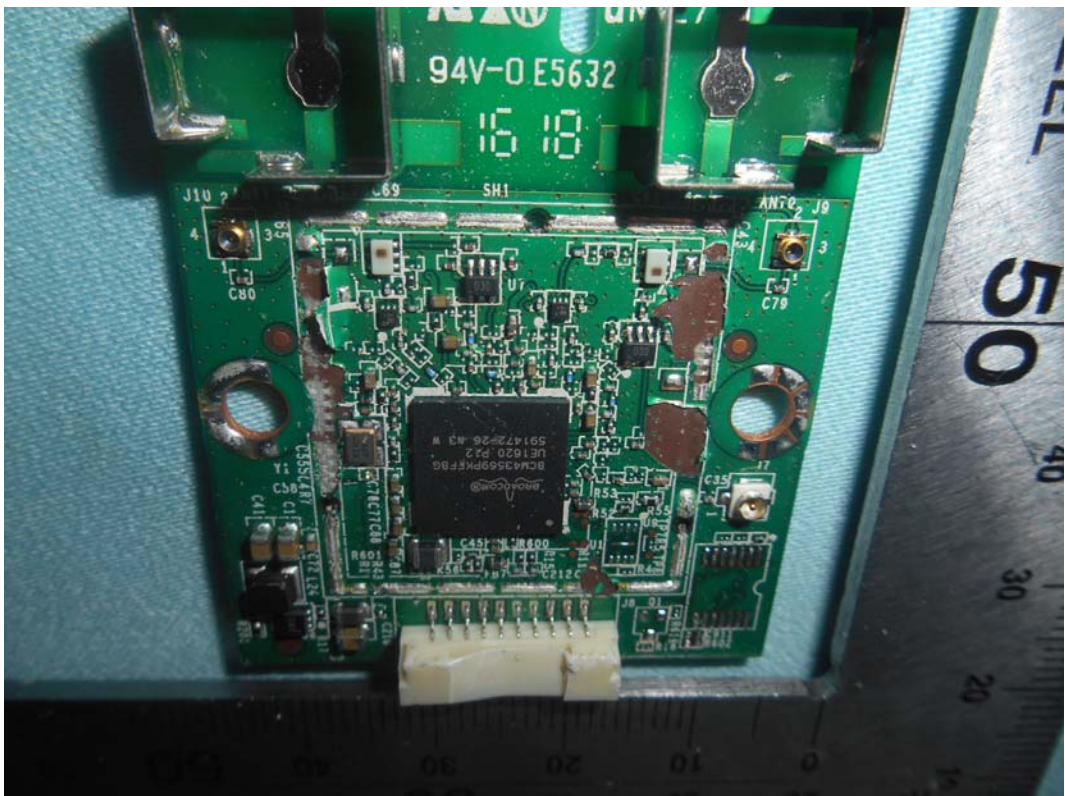


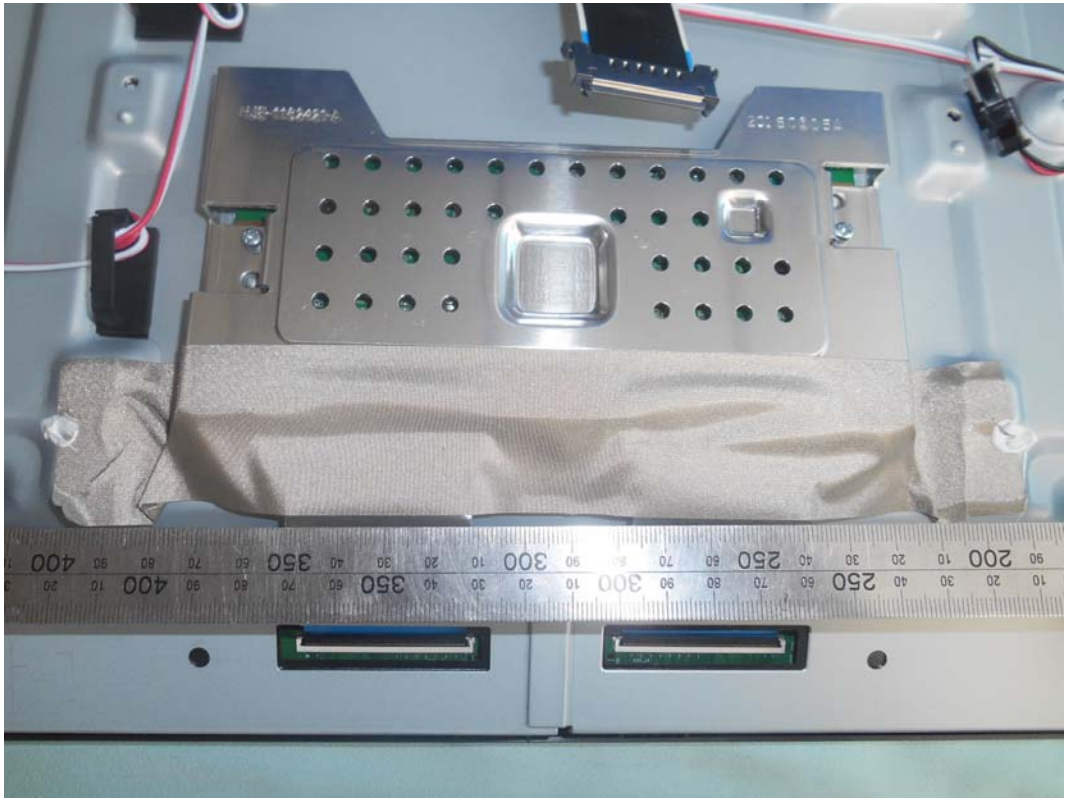
FIGURE 21  
LED LCD TV (M/N: LC-55U)  
RF BOARD LABEL



FIGURE 22  
LED LCD TV (M/N: LC-55U)  
CHIP AND CRYSTAL ON RF BOARD



*FIGURE 23*  
*LED LCD TV (M/N: LC-55U)*  
*DEBUG #1*



*FIGURE 24*  
*LED LCD TV (M/N: LC-55U)*  
*DEBUG #2*

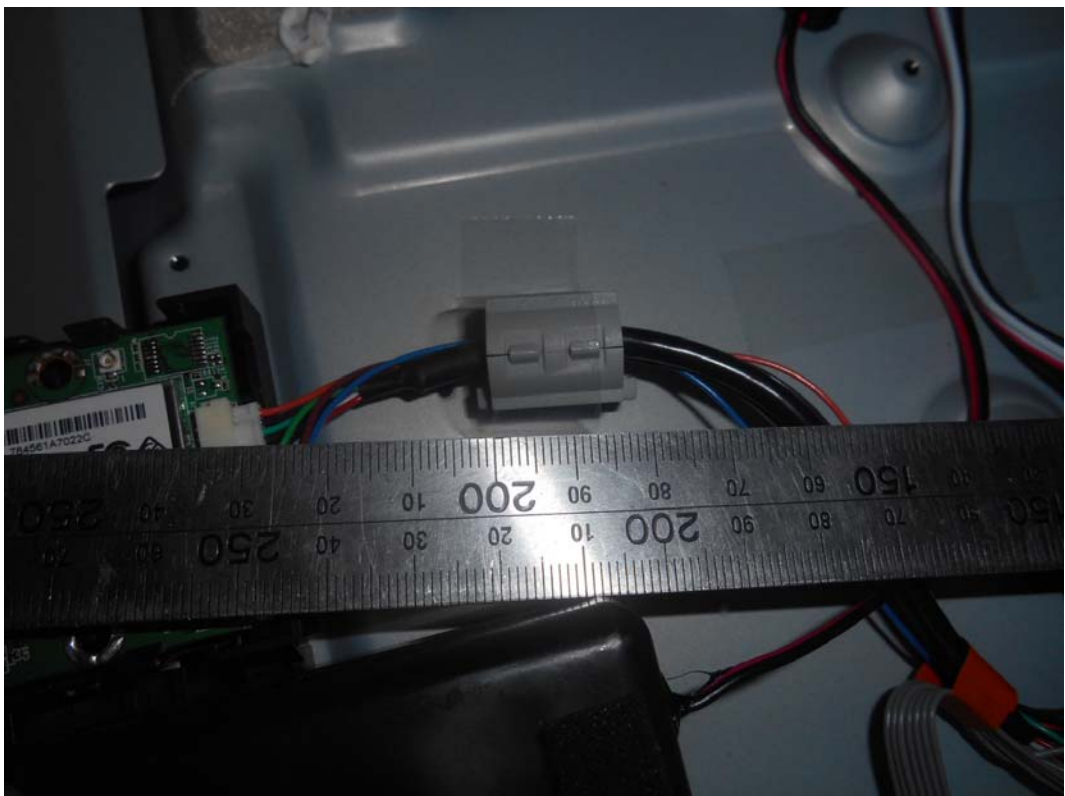


FIGURE 25  
LED LCD TV (M/N: LC-55U)  
DEBUG #3

