

FIGURE 1
LED LCD TV (M/N: LC-55F)
COVER REMOVED



FIGURE 2
LED LCD TV (M/N: LC-55F)
LCD PANEL LABEL



FIGURE 3
LED LCD TV (M/N: LC-55F)
POWER BOARD (COMPONENT SIDE)

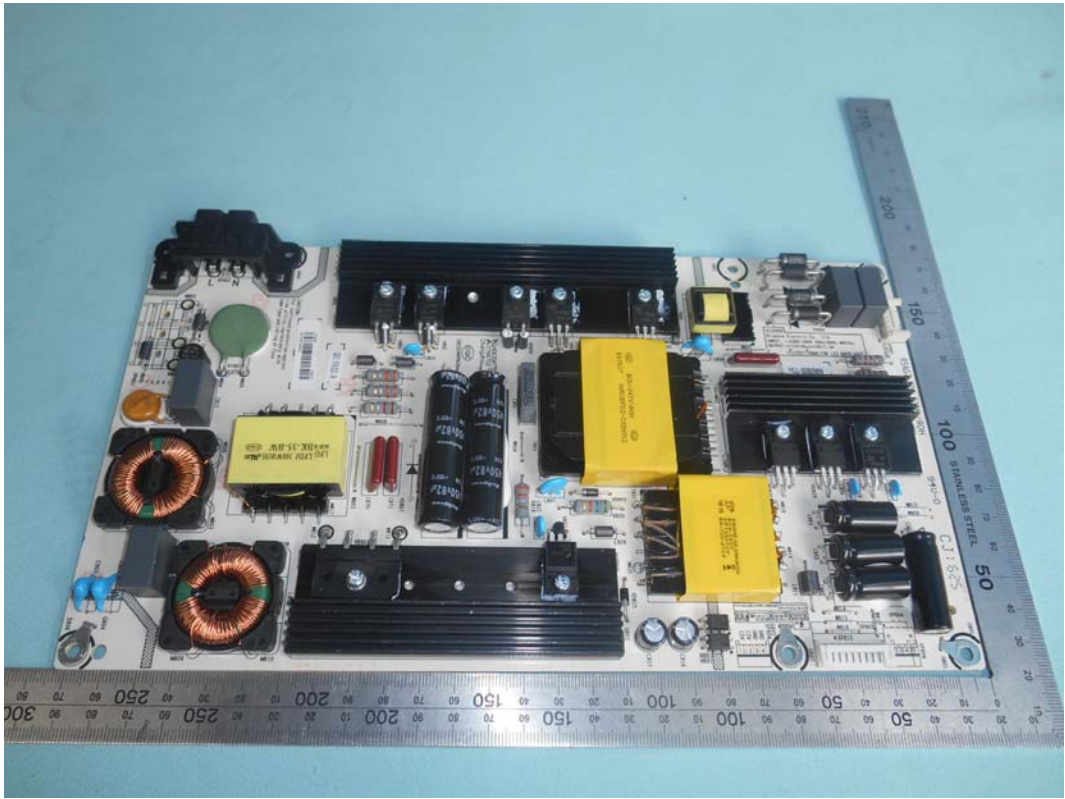
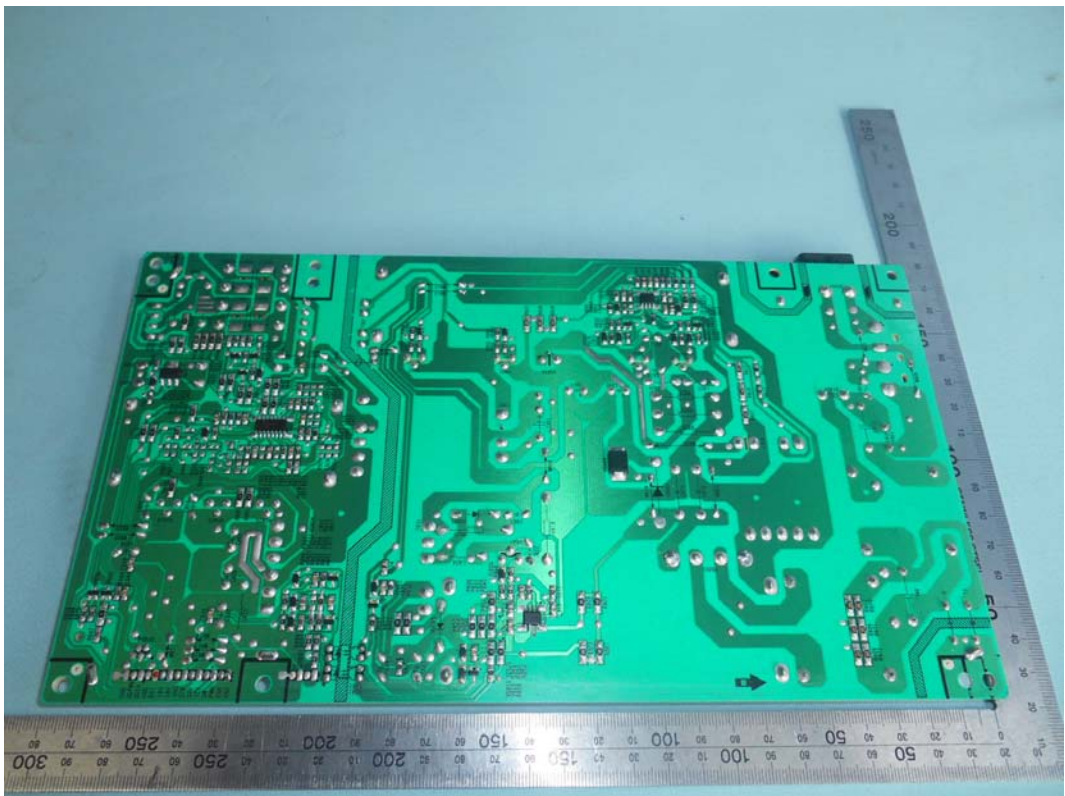


FIGURE 4
LED LCD TV (M/N: LC-55F)
POWER BOARD (SOLDERED SIDE)



*FIGURE 5
LED LCD TV (M/N: LC-55F)
MAIN BOARD (COMPONENT SIDE)*



*FIGURE 6
LED LCD TV (M/N: LC-55F)
MAIN BOARD (SOLDERED SIDE)*



FIGURE 7
LED LCD TV (M/N: LC-55F)
CHIP AND CRYSTAL ON MAIN BOARD

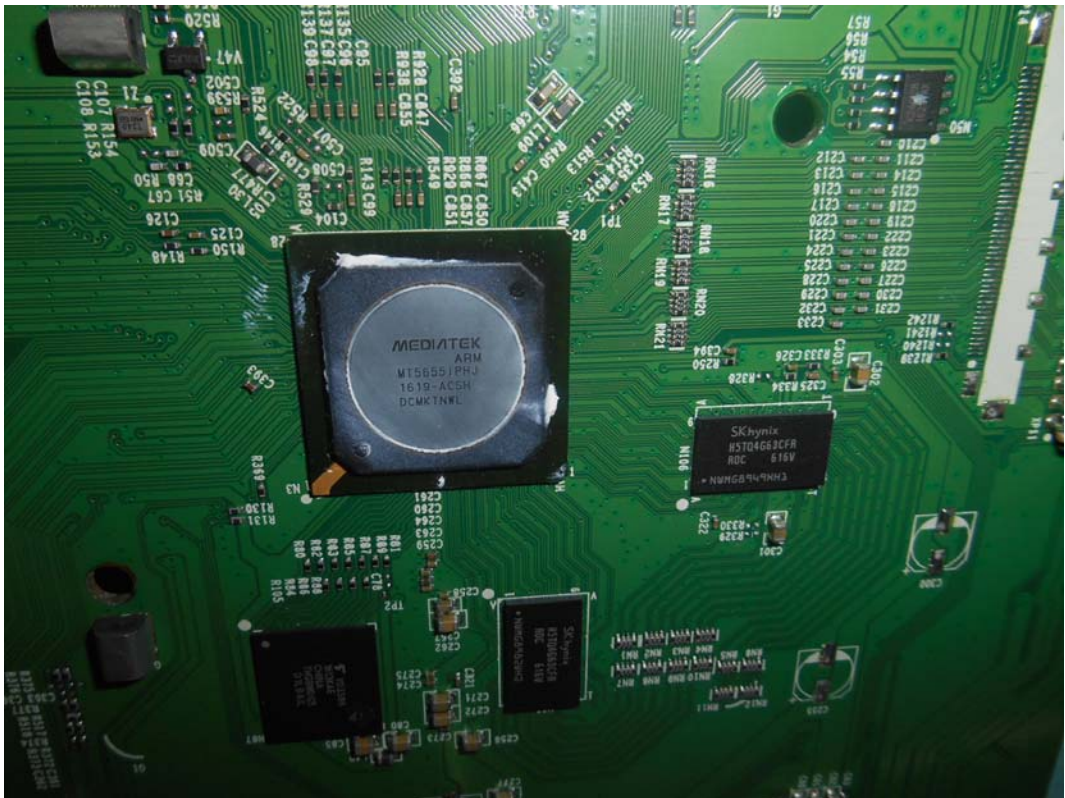


FIGURE 8
LED LCD TV (M/N: LC-55F)
TUNER



FIGURE 10
LED LCD TV (M/N: LC-55F)
PANEL BOARD (COMPONENT SIDE)

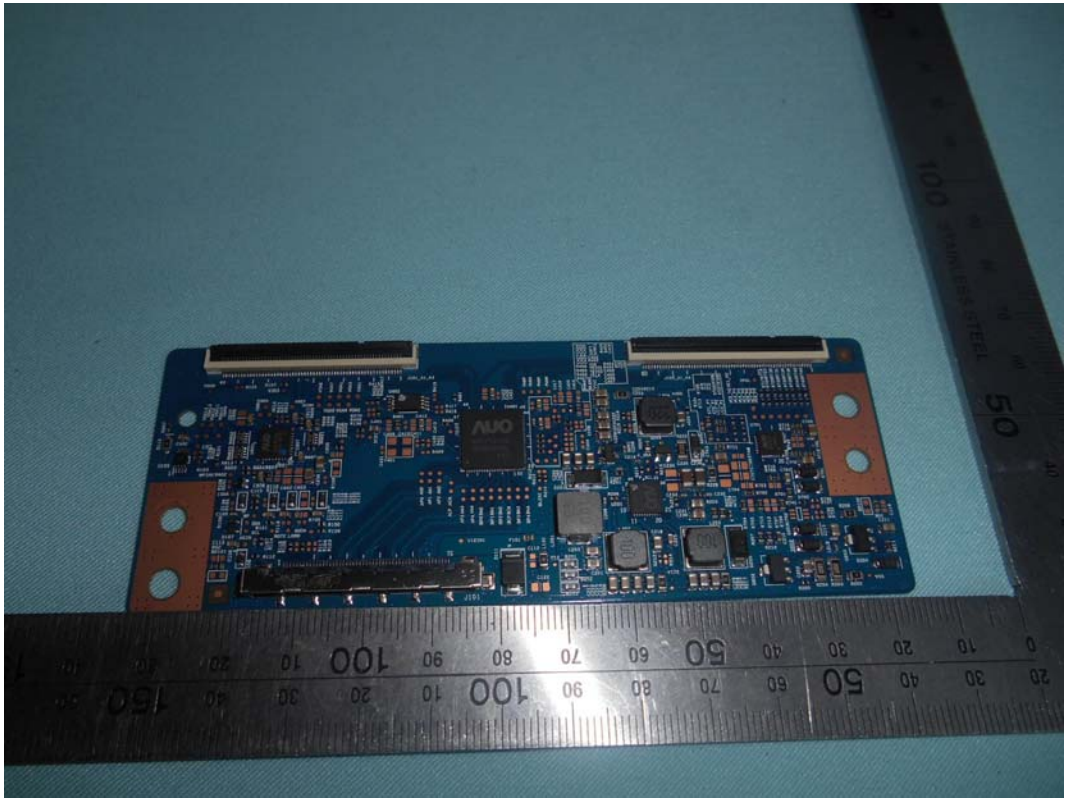


FIGURE 11
LED LCD TV (M/N: LC-55F)
PANEL BOARD (SOLDERED SIDE)

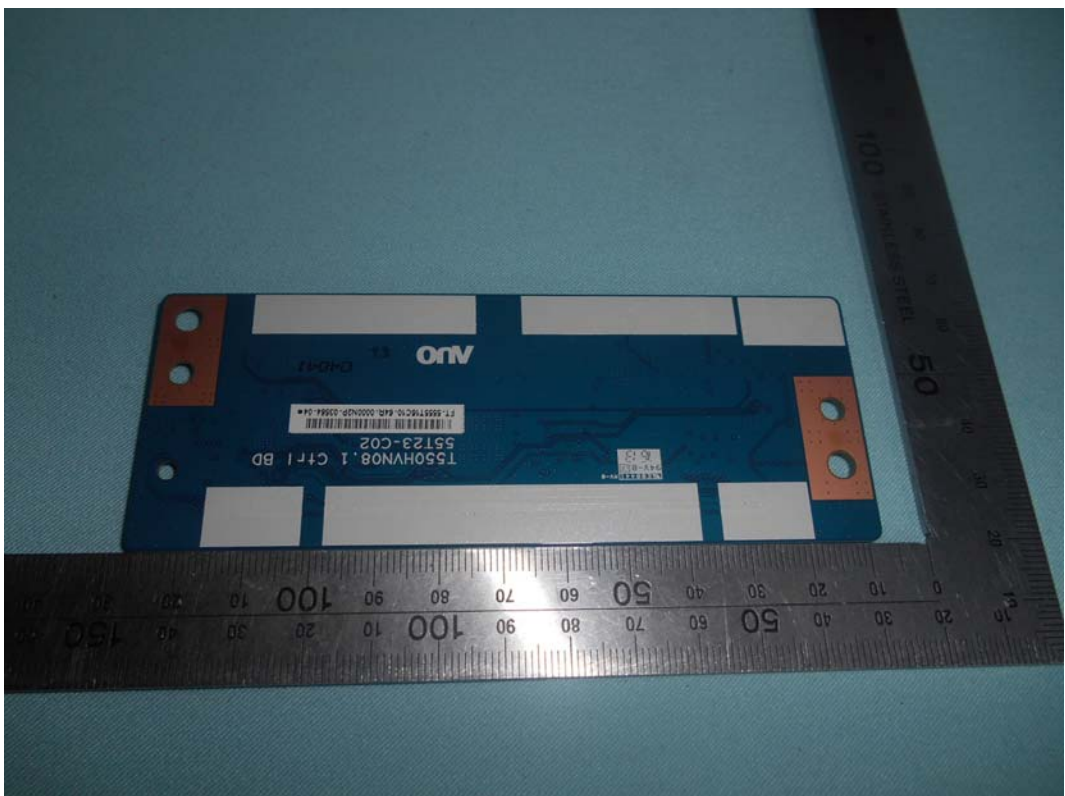


FIGURE 12
LED LCD TV (M/N: LC-55F)
CHIP ON PANEL BOARD

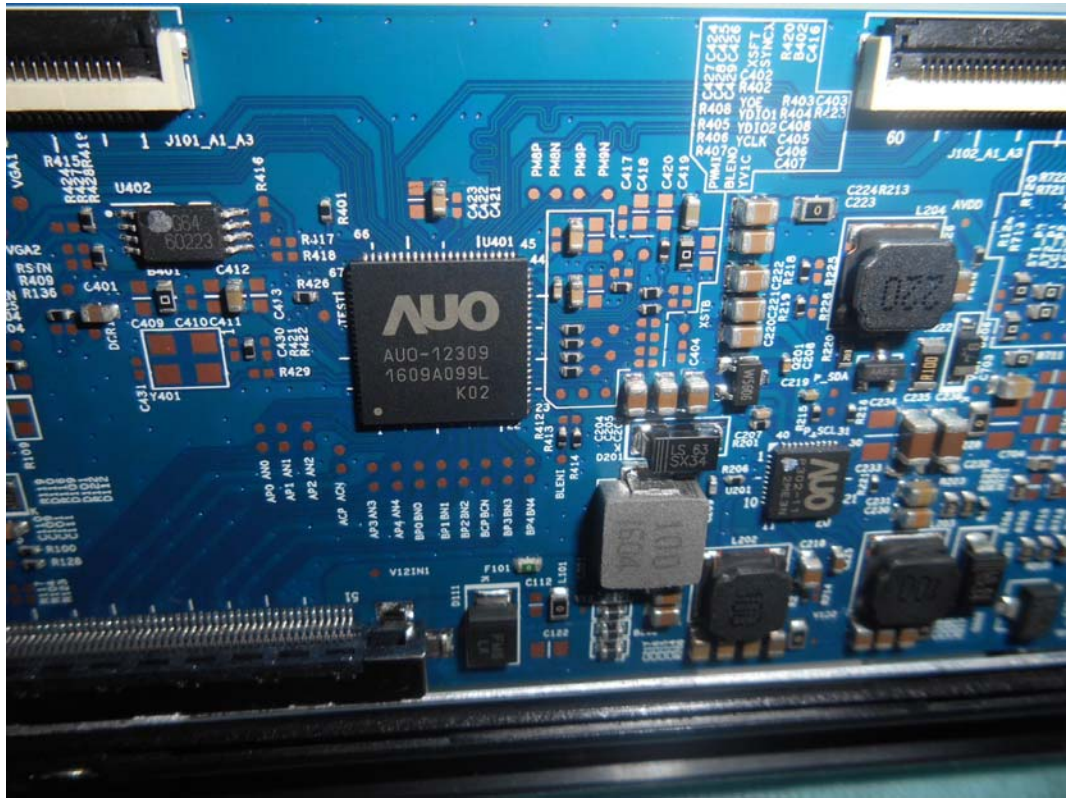


FIGURE 13
LED LCD TV (M/N: LC-55F)
KEY BOARD (COMPONENT SIDE)

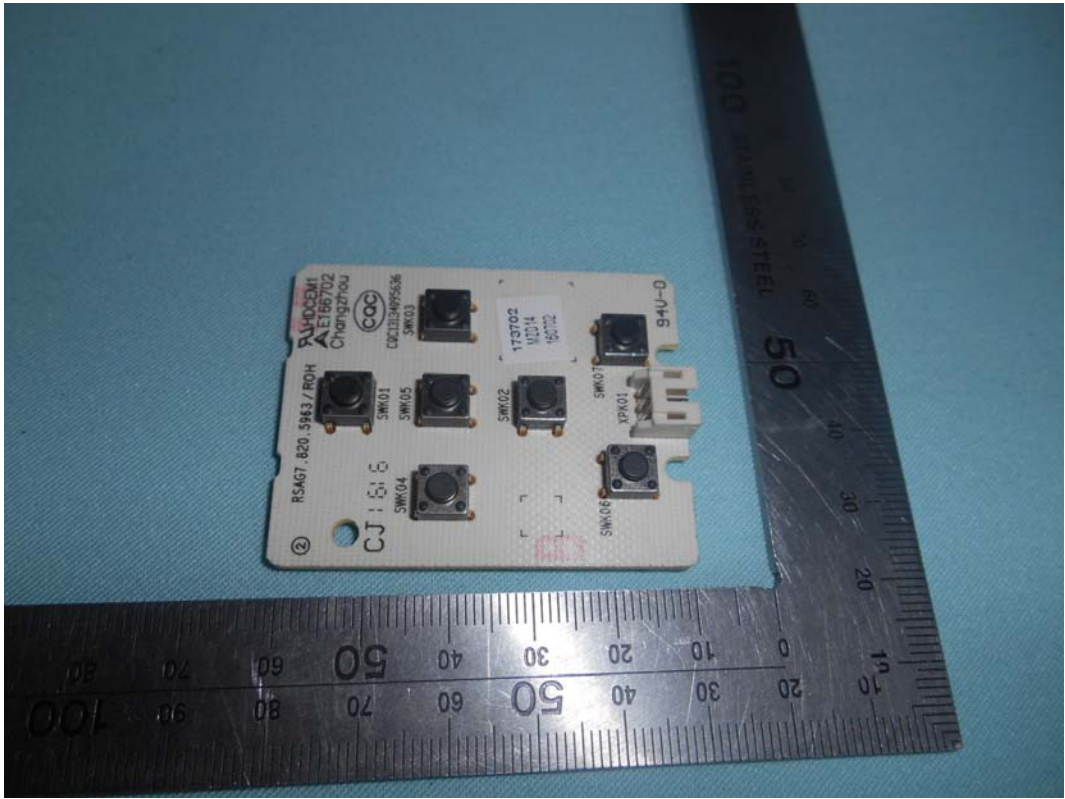


FIGURE 14
LED LCD TV (M/N: LC-55F)
KEY BOARD (SOLDERED SIDE)

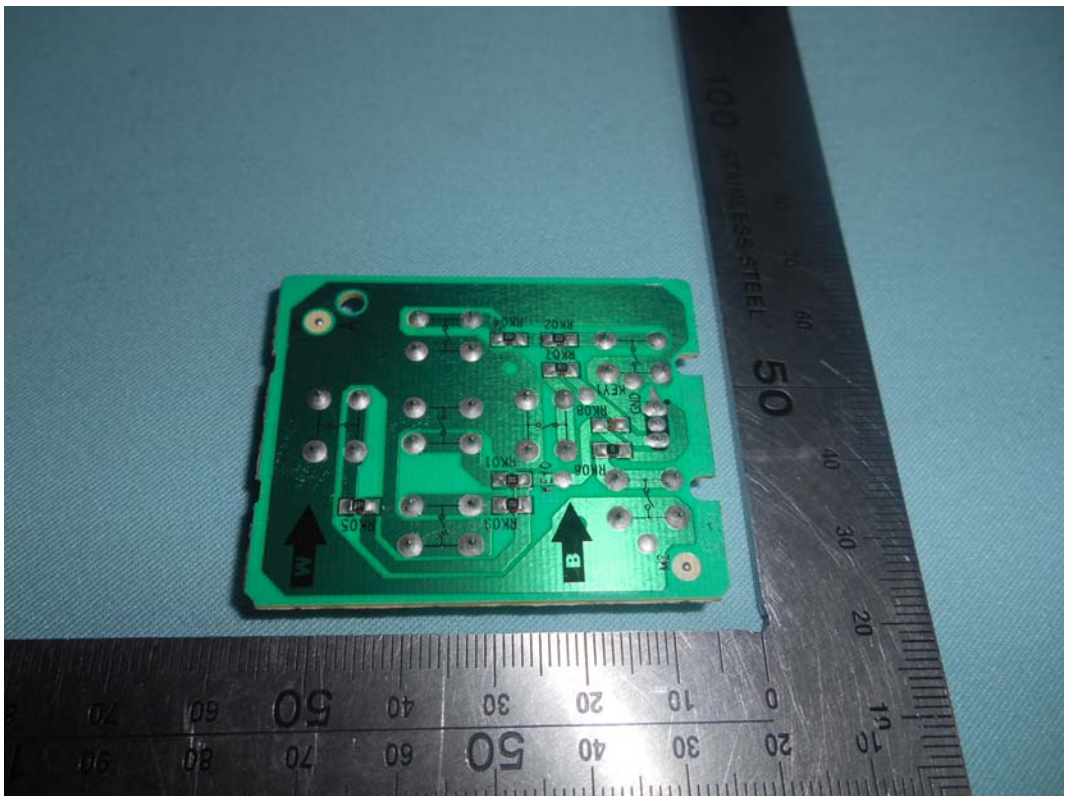


FIGURE 15
LED LCD TV (M/N: LC-55F)
IR BOARD (COMPONENT SIDE)

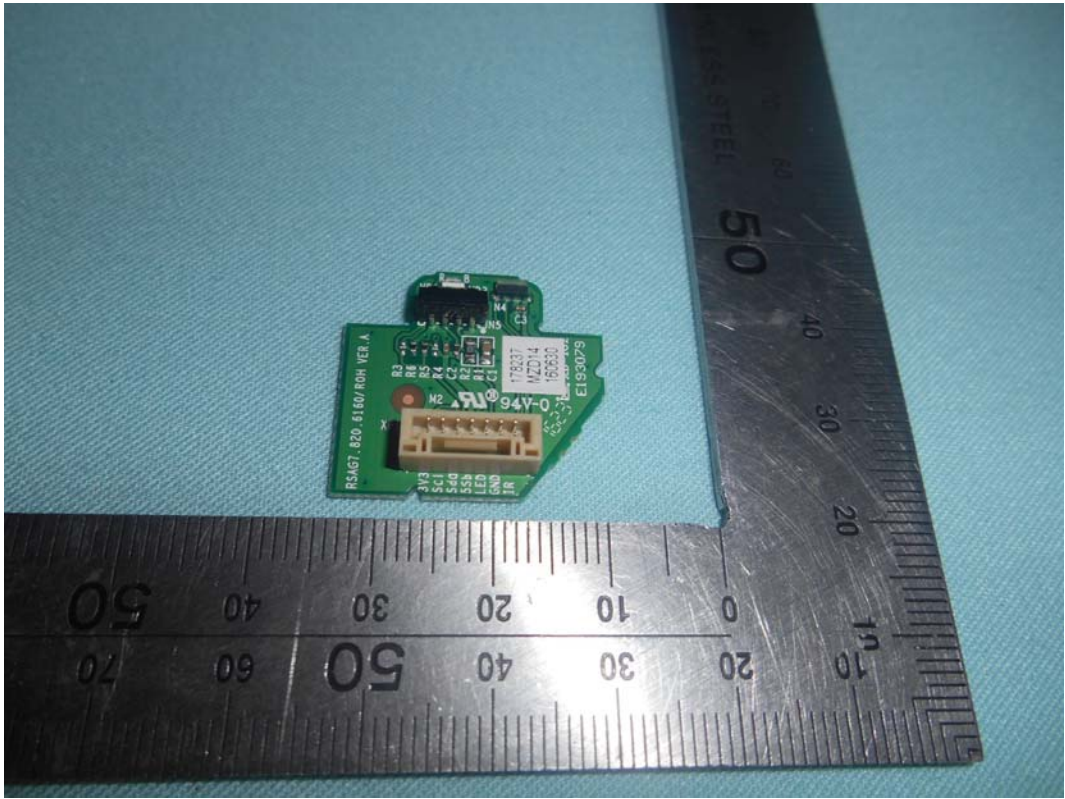


FIGURE 16
LED LCD TV (M/N: LC-55F)
IR BOARD (SOLDERED SIDE)

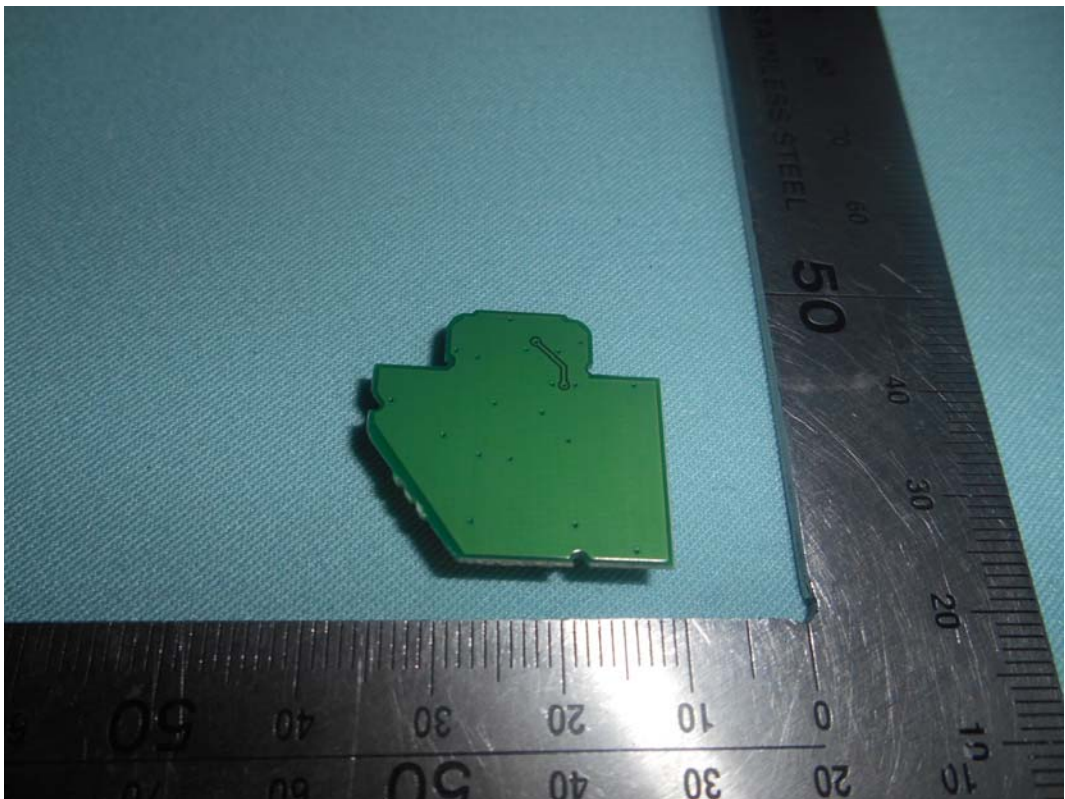


FIGURE 17
LED LCD TV (M/N: LC-55F)
RF BOARD (COMPONENT SIDE)



FIGURE 18
LED LCD TV (M/N: LC-55F)
RF BOARD (SOLDERED SIDE)

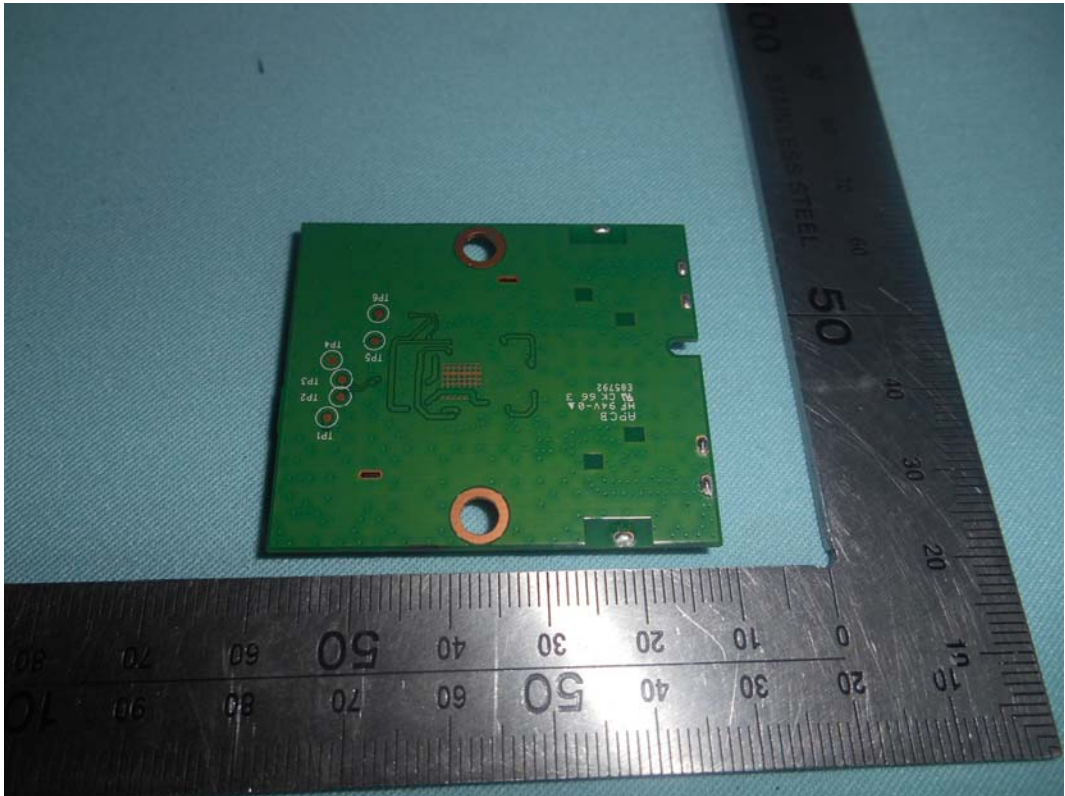
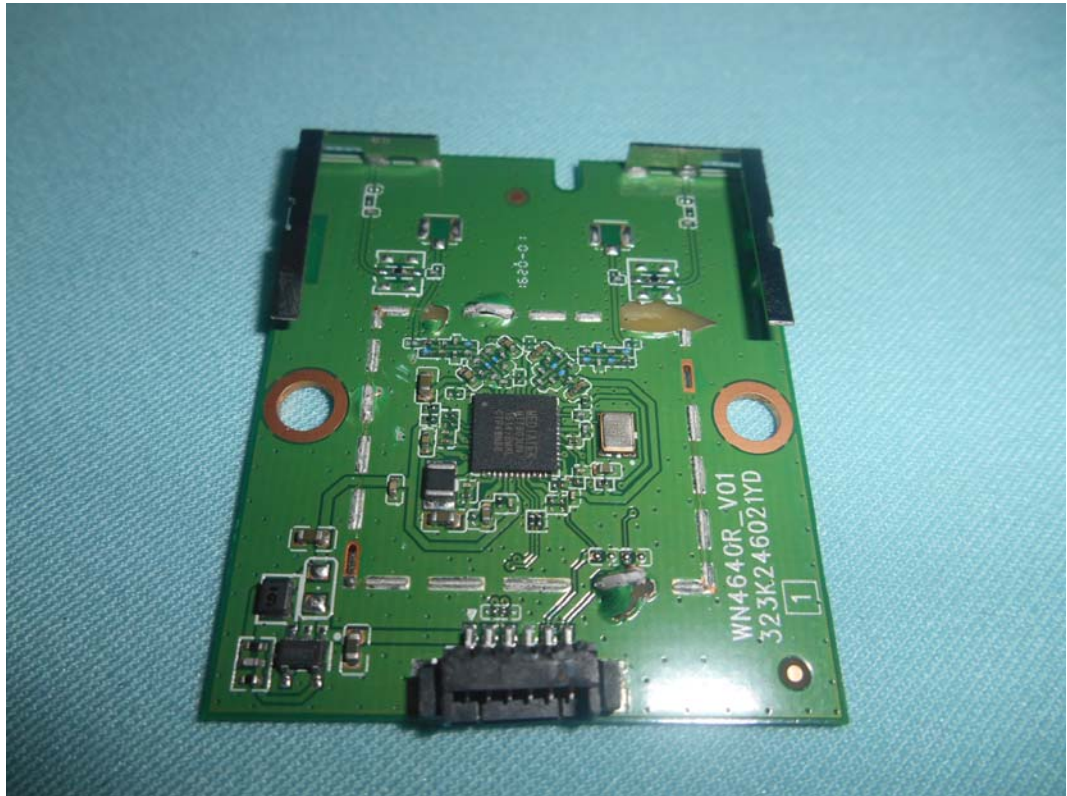


FIGURE 19
LED LCD TV (M/N: LC-55F)
RF BOARD LABEL



*FIGURE 20
LED LCD TV (M/N: LC-55F)
CHIP AND CRYSTAL ON RF BOARD*



*FIGURE 21
LED LCD TV (M/N: LC-55F)
DEBUG*

