

FIGURE 1
LED LCD TV (M/N: LC-55N5300U)
COVER REMOVED



FIGURE 2
LED LCD TV (M/N: LC-55N5300U)
POWER BOARD (COMPONENT SIDE)

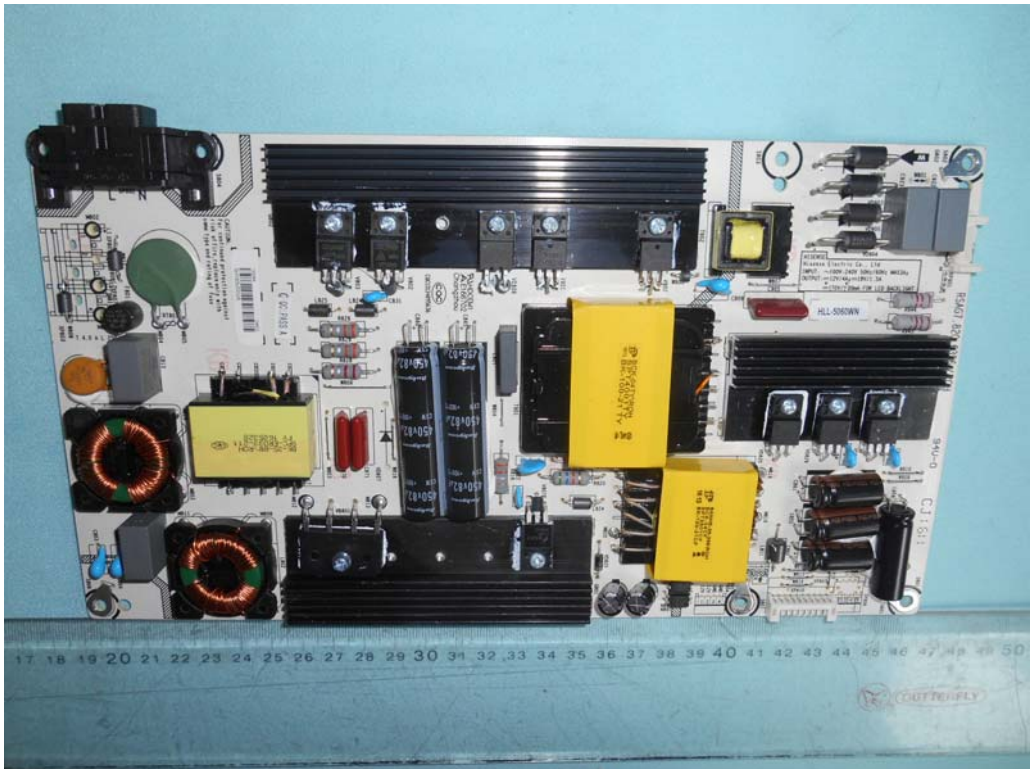


FIGURE 3
LED LCD TV (M/N: LC-55N5300U)
POWER BOARD (SOLDERED SIDE)

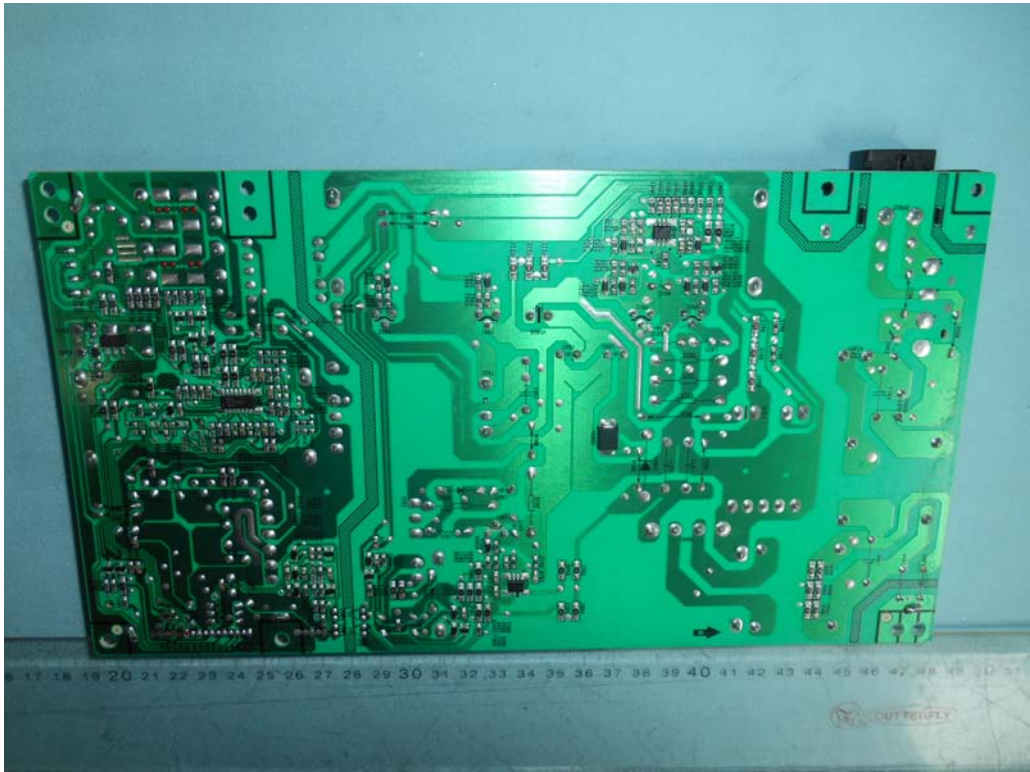
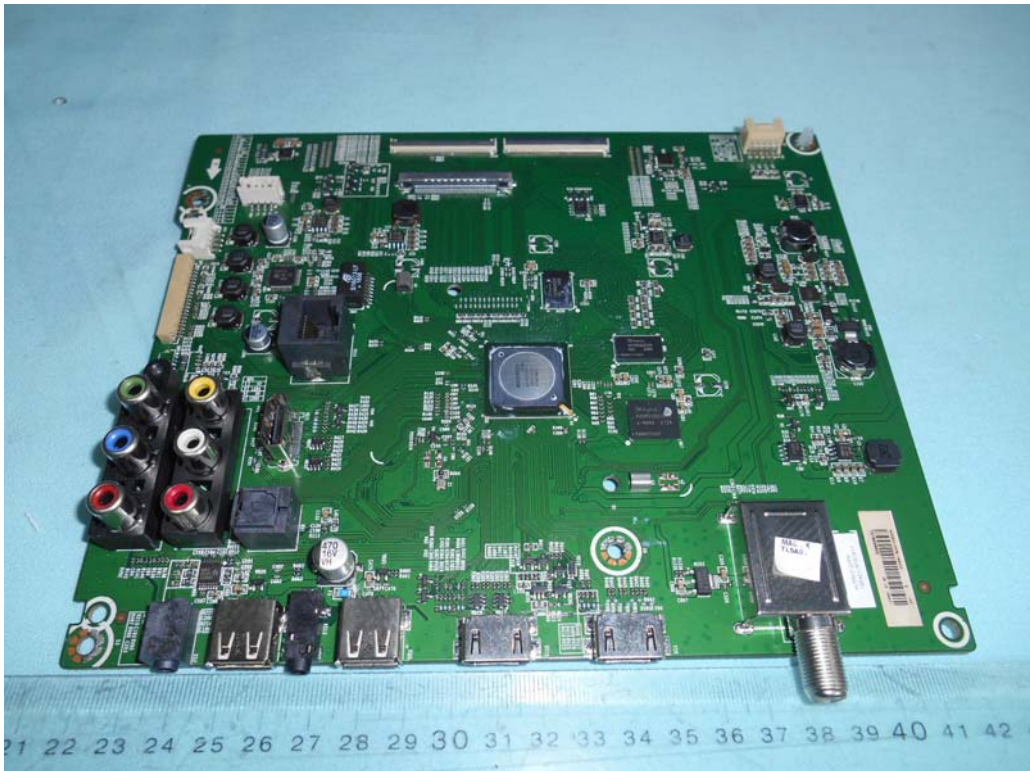
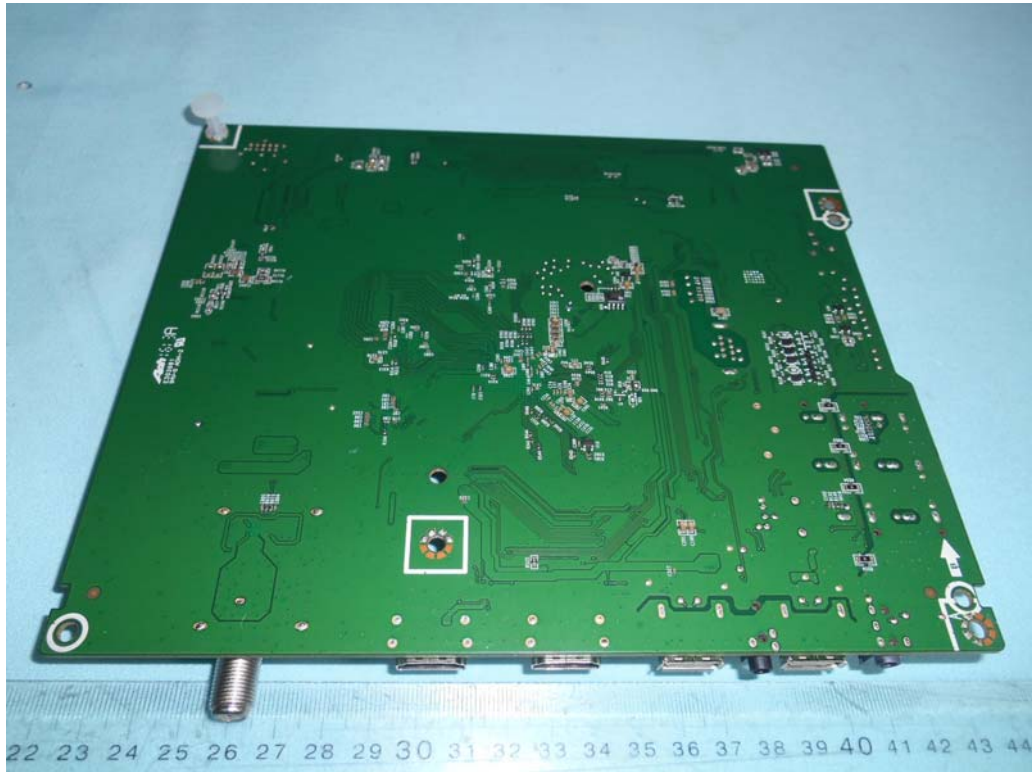


FIGURE 4
LED LCD TV (M/N: LC-55N5300U)
MAIN BOARD (COMPONENT SIDE)



*FIGURE 5
LED LCD TV (M/N: LC-55N5300U)
MAIN BOARD (SOLDERED SIDE)*



*FIGURE 6
LED LCD TV (M/N: LC-55N5300U)
CHIP & CRYSTAL#1 ON MAIN BOARD*

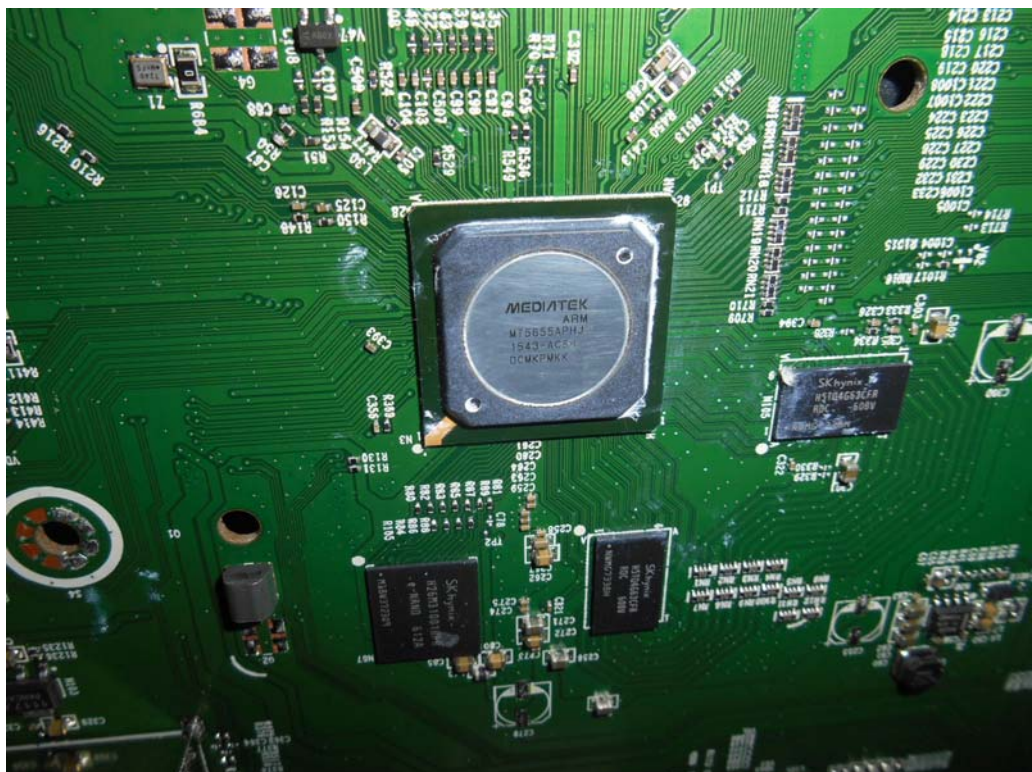


FIGURE 7
LED LCD TV (M/N: LC-55N5300U)
TUNER



FIGURE 8
LED LCD TV (M/N: LC-55N5300U)
TUNER BOARD

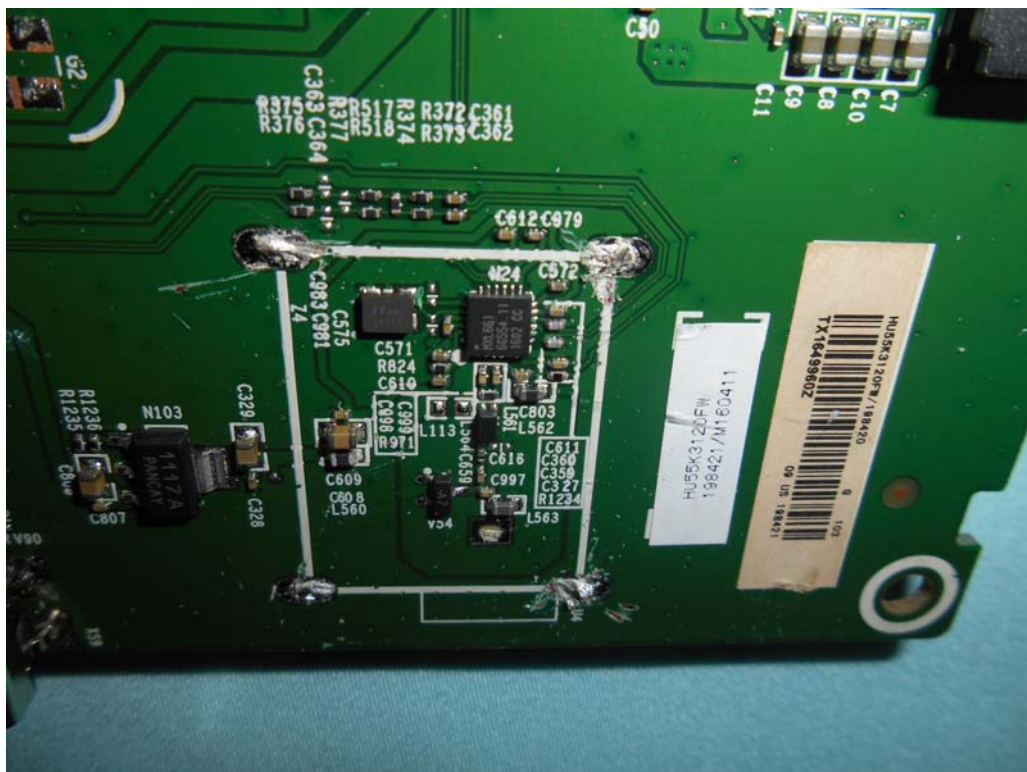


FIGURE 9
LED LCD TV (M/N: LC-55N5300U)
RF BOARD (COMPONENT SIDE)



FIGURE 10
LED LCD TV (M/N: LC-55N5300U)
RF BOARD (SOLDERED SIDE)

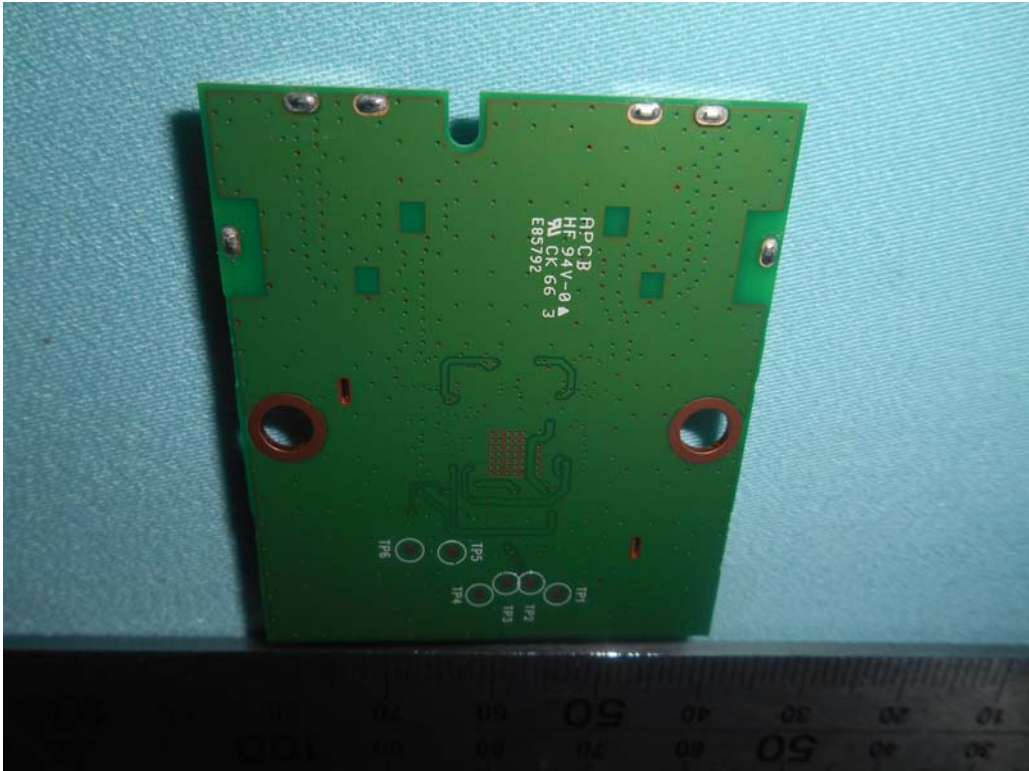


FIGURE 11
LED LCD TV (M/N: LC-55N5300U)
RF LABEL



FIGURE 12
LED LCD TV (M/N: LC-55N5300U)
CHIP & CRYSTAL ON RF BOARD

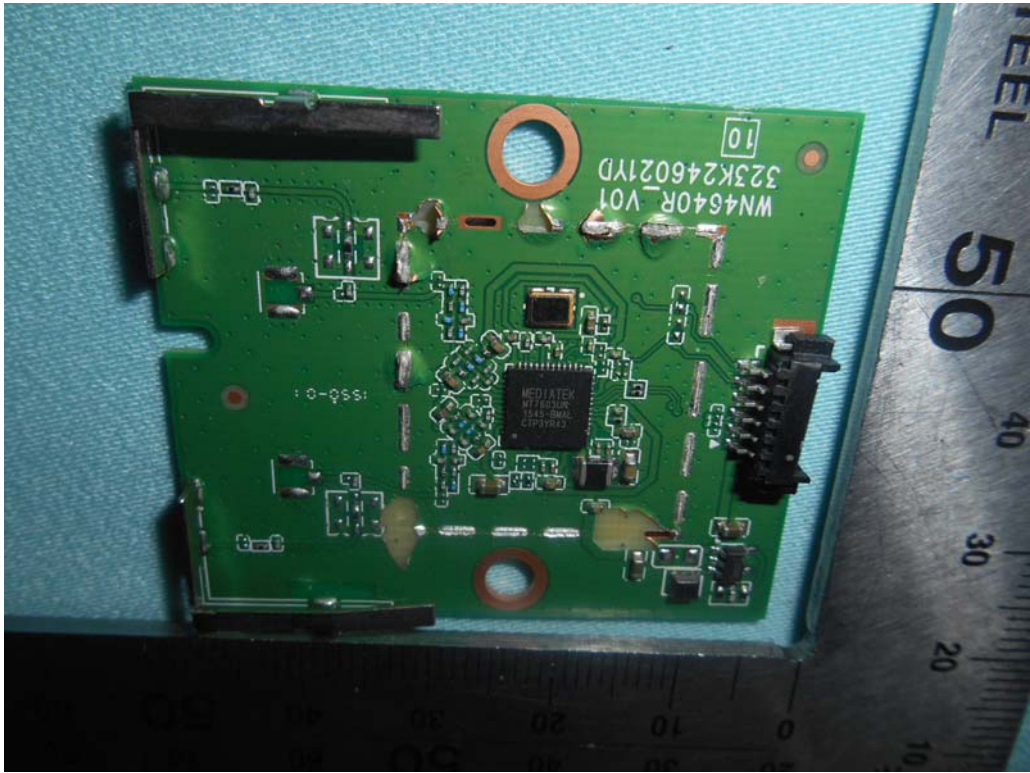


FIGURE 13
LED LCD TV (M/N: LC-55N5300U)
PANEL LABEL



FIGURE 14
LED LCD TV (M/N: LC-55N5300U)
KEY BOARD (COMPONENT SIDE)

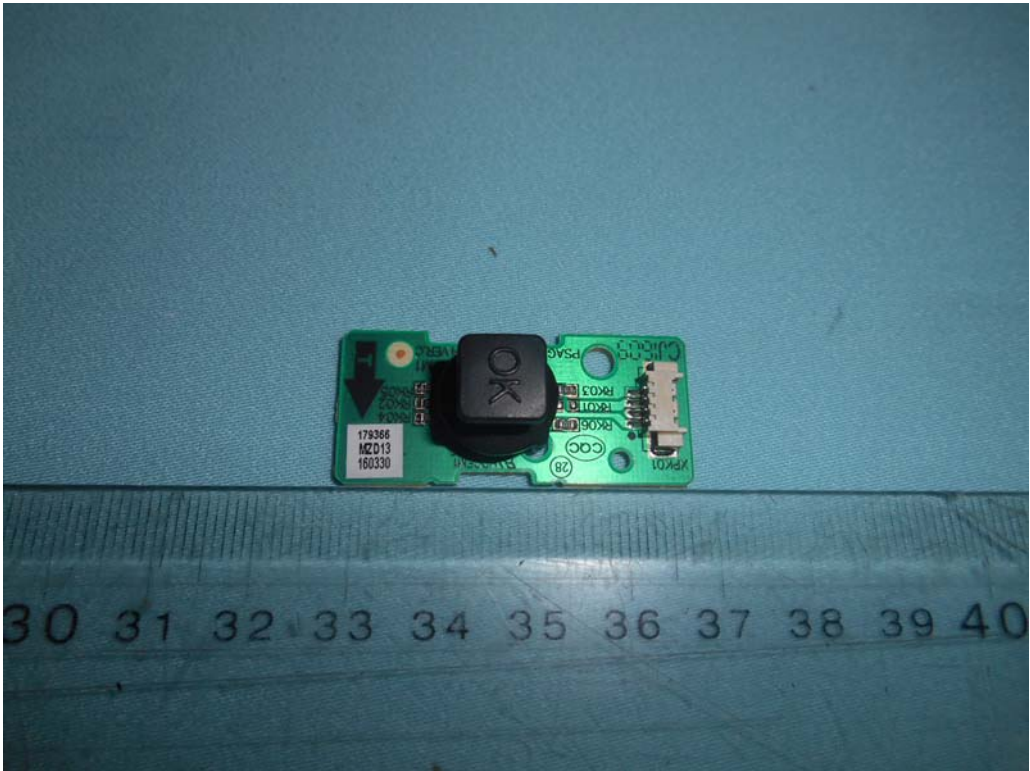


FIGURE 15
LED LCD TV (M/N: LC-55N5300U)
KEY BOARD (SOLDERED SIDE)



FIGURE 16
LED LCD TV (M/N: LC-55N5300U)
IR Board (COMPONENT SIDE)

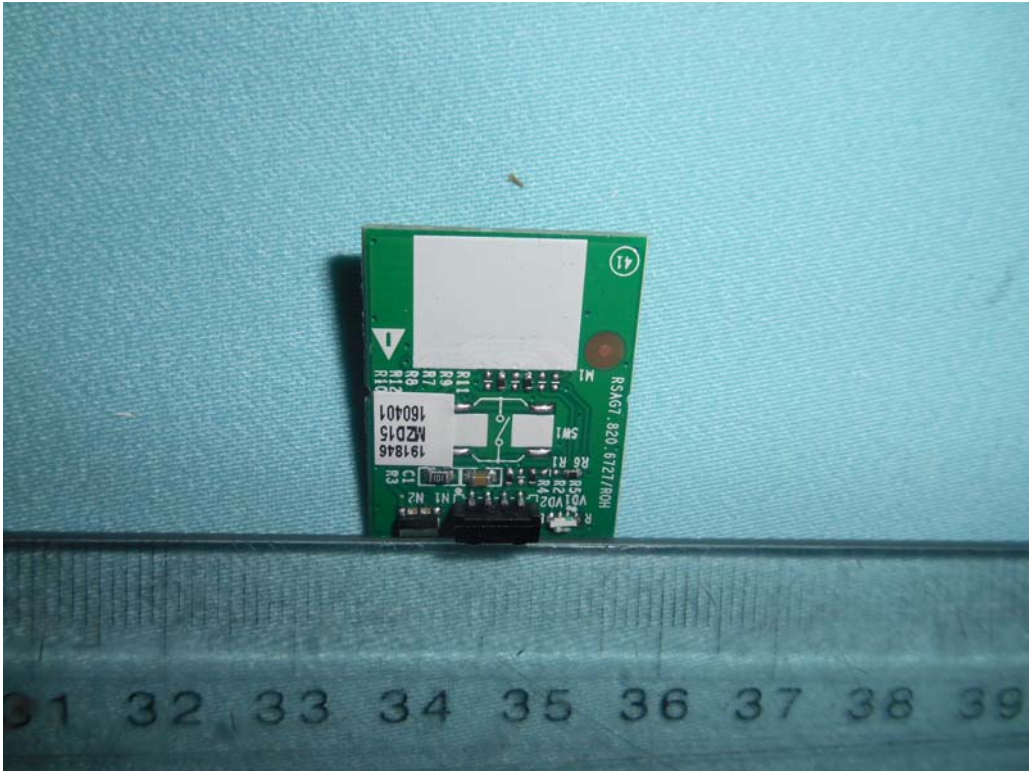


FIGURE 17
LED LCD TV (M/N: LC-55N5300U)
IR Board (SOLDERED SIDE)



FIGURE 18
LED LCD TV (M/N: LC-55N5300U)
DEBUG

