

FIGURE 1
LED LCD TV (M/N: PLDED6079-SM)
COVER REMOVED



FIGURE 2
LED LCD TV (M/N: PLDED6079-SM)
LCD PANEL LABEL



FIGURE 3
LED LCD TV (M/N: PLDED6079-SM)
MAIN BOARD (COMPONENT SIDE)



FIGURE 4
LED LCD TV (M/N: PLDED6079-SM)
MAIN BOARD (SOLDERED SIDE)

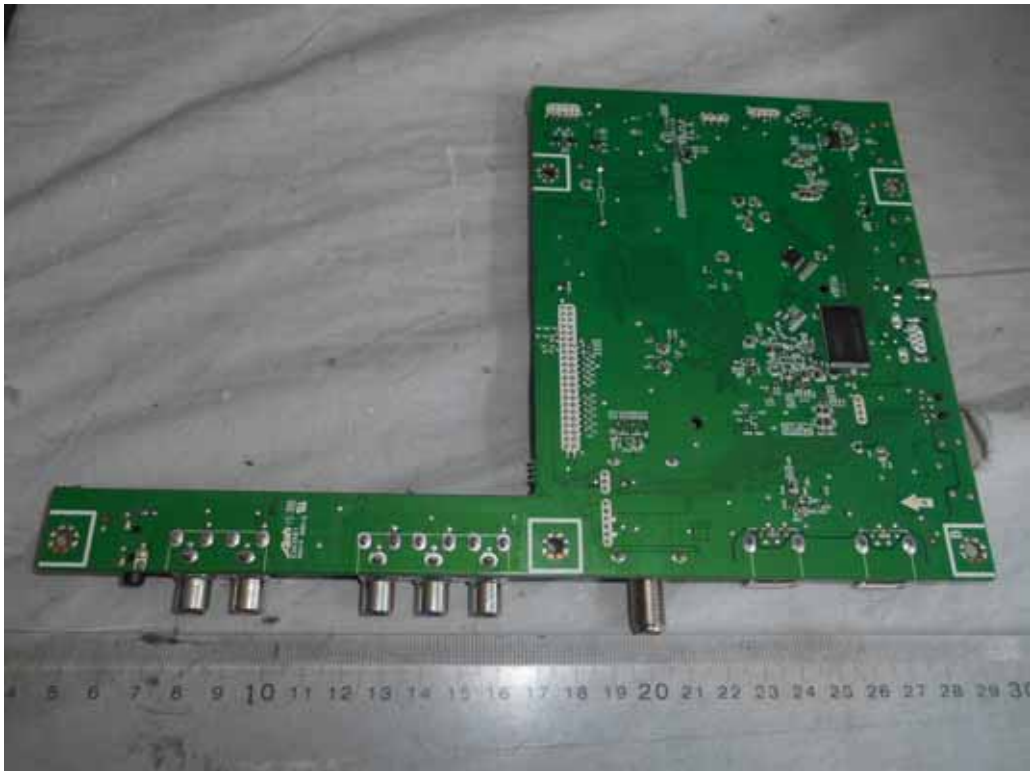


FIGURE 5
LED LCD TV (M/N: PLDED6079-SM)
CHIP AND CRYSTAL ON MAIN BOARD

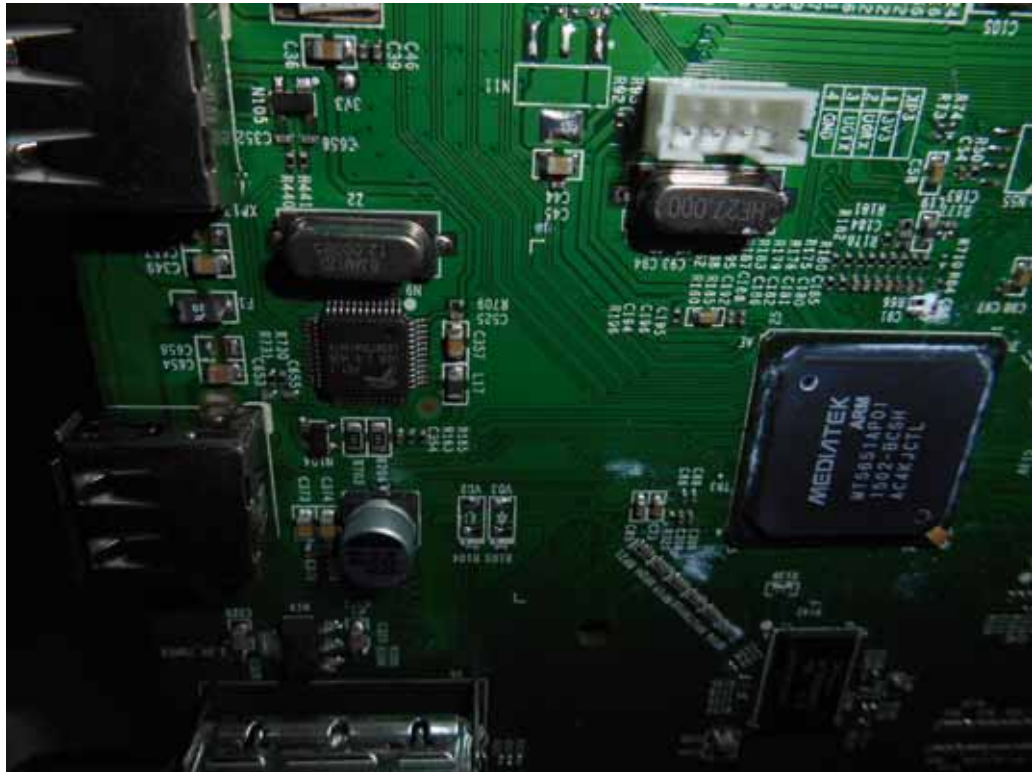


FIGURE 6
LED LCD TV (M/N: PLDED6079-SM)
TUNER



FIGURE 7
LED LCD TV (M/N: PLDED6079-SM)
TUNER BOARD (COMPONENT SIDE)



FIGURE 8
LED LCD TV (M/N: PLDED6079-SM)
TUNER BOARD (SOLDERED SIDE)



FIGURE 9
LED LCD TV (M/N: PLDED6079-SM)
RF BOARD (COMPONENT SIDE)



FIGURE 10
LED LCD TV (M/N: PLDED6079-SM)
RF BOARD (SOLDERED SIDE)

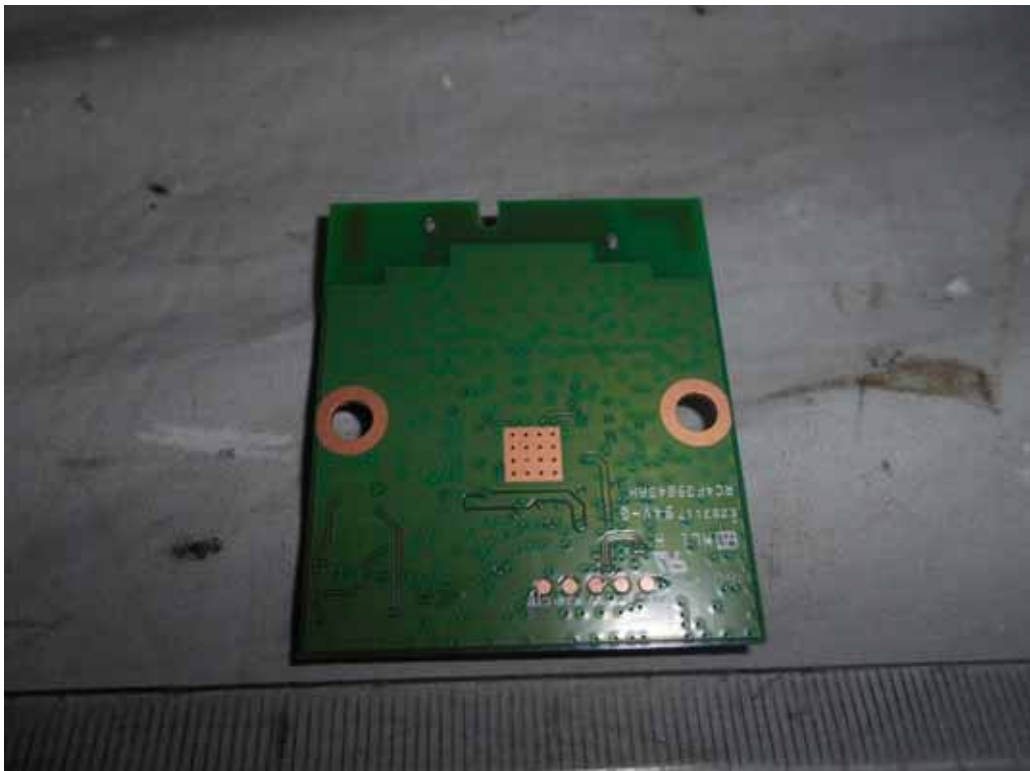


FIGURE 11
LED LCD TV (M/N: PLDED6079-SM)
RF BOARD LABEL



FIGURE 12
LED LCD TV (M/N: PLDED6079-SM)
RF BOARD COVER REMOVED



FIGURE 13
LED LCD TV (M/N: PLDED6079-SM)
PANEL BOARD (COMPONENT SIDE)



FIGURE 14
LED LCD TV (M/N: PLDED6079-SM)
PANEL BOARD (SOLDERED SIDE)



FIGURE 15
LED LCD TV (M/N: PLDED6079-SM)
CHIP AND CRYSTAL ON PANEL BOARD



FIGURE 16
LED LCD TV (M/N: PLDED6079-SM)
POWER BOARD (COMPONENT SIDE)



FIGURE 17
LED LCD TV (M/N: PLDED6079-SM)
POWER BOARD (SOLDERED SIDE)

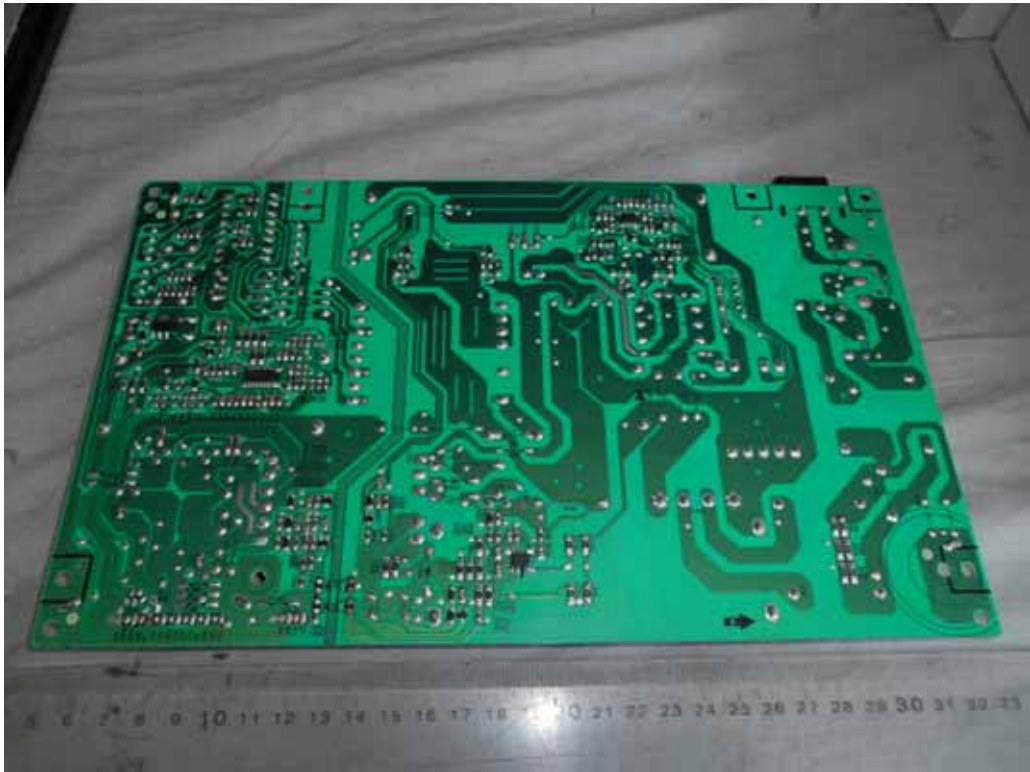


FIGURE 18
LED LCD TV (M/N: PLDED6079-SM)
KEY BOARD (COMPONENT SIDE)



FIGURE 19
LED LCD TV (M/N: PLDED6079-SM)
KEY BOARD (SOLDERED SIDE)



FIGURE 20
LED LCD TV (M/N: PLDED6079-SM)
IR BOARD (COMPONENT SIDE)



FIGURE 21
LED LCD TV (M/N: PLDED6079-SM)
IR BOARD (SOLDERED SIDE)



FIGURE 22
LED LCD TV (M/N: PLDED6079-SM)
DEBUG #1

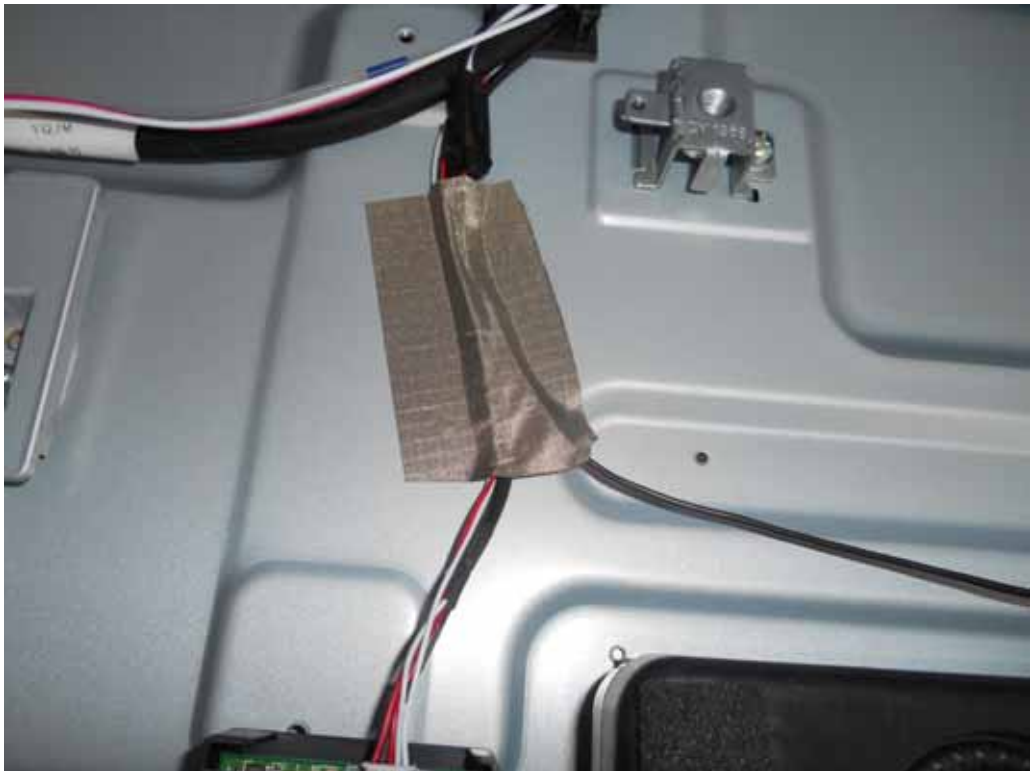


FIGURE 23
LED LCD TV (M/N: PLDED6079-SM)
DEBUG #2

