

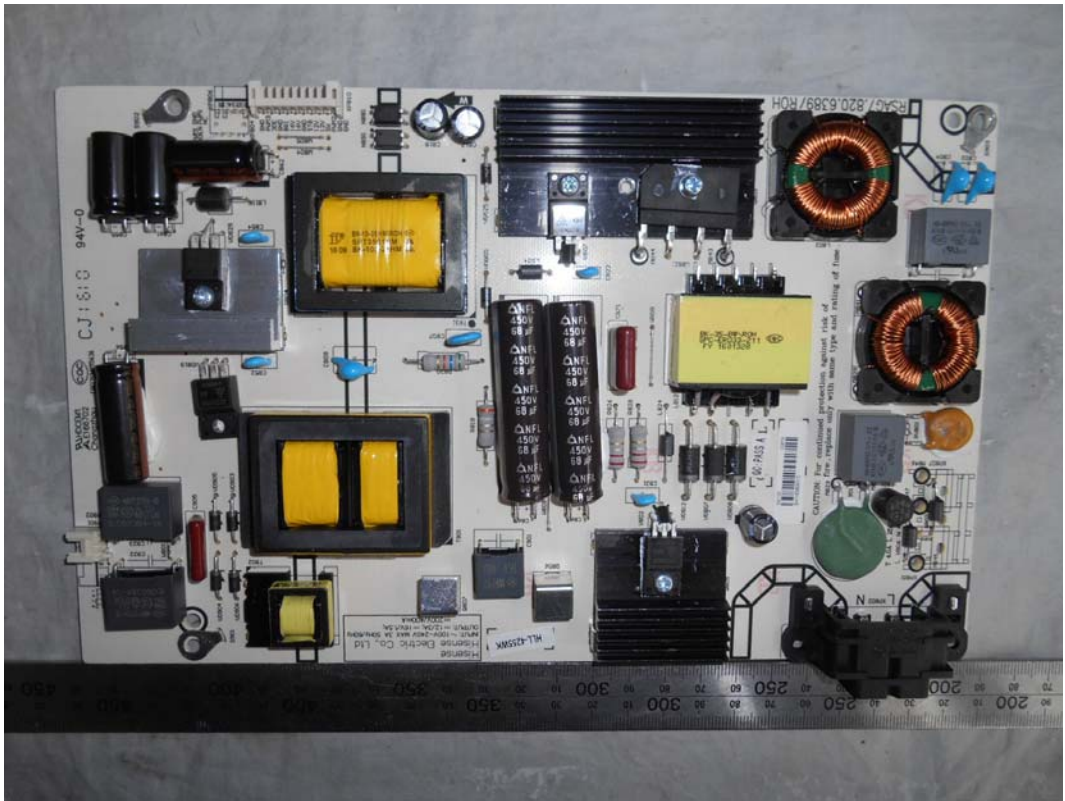
FIGURE 1  
LED LCD TV (M/N: LC-50N3100U)  
COVER REMOVED



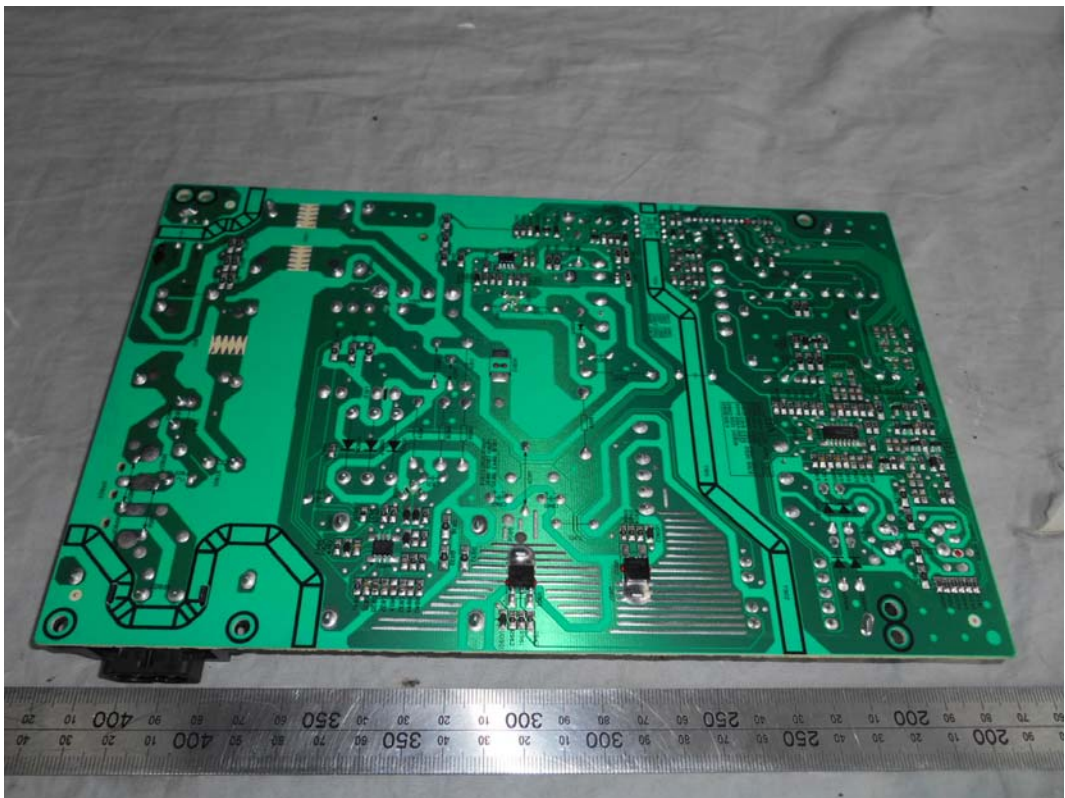
FIGURE 2  
LED LCD TV (M/N: LC-50N3100U)  
LCD PANEL LABEL



*FIGURE 3  
LED LCD TV (M/N: LC-50N3100U)  
POWER BOARD (COMPONENT SIDE)*



*FIGURE 4  
LED LCD TV (M/N: LC-50N3100U)  
POWER BOARD (SOLDERED SIDE)*



*FIGURE 5*  
*LED LCD TV (M/N: LC-50N3100U)*  
*MAIN BOARD (COMPONENT SIDE)*



*FIGURE 6*  
*LED LCD TV (M/N: LC-50N3100U)*  
*MAIN BOARD (SOLDERED SIDE)*



FIGURE 7  
LED LCD TV (M/N: LC-50N3100U)  
CHIP & CRYSTAL ON MAIN BOARD

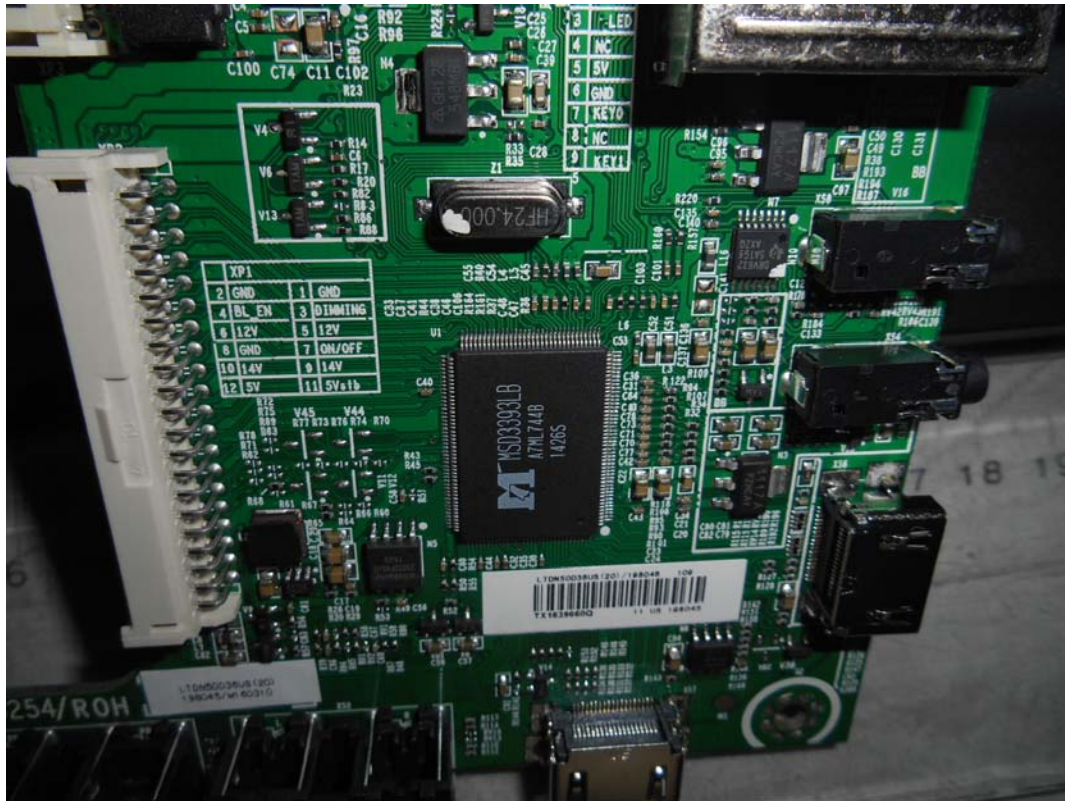


FIGURE 8  
LED LCD TV (M/N: LC-50N3100U)  
TUNER

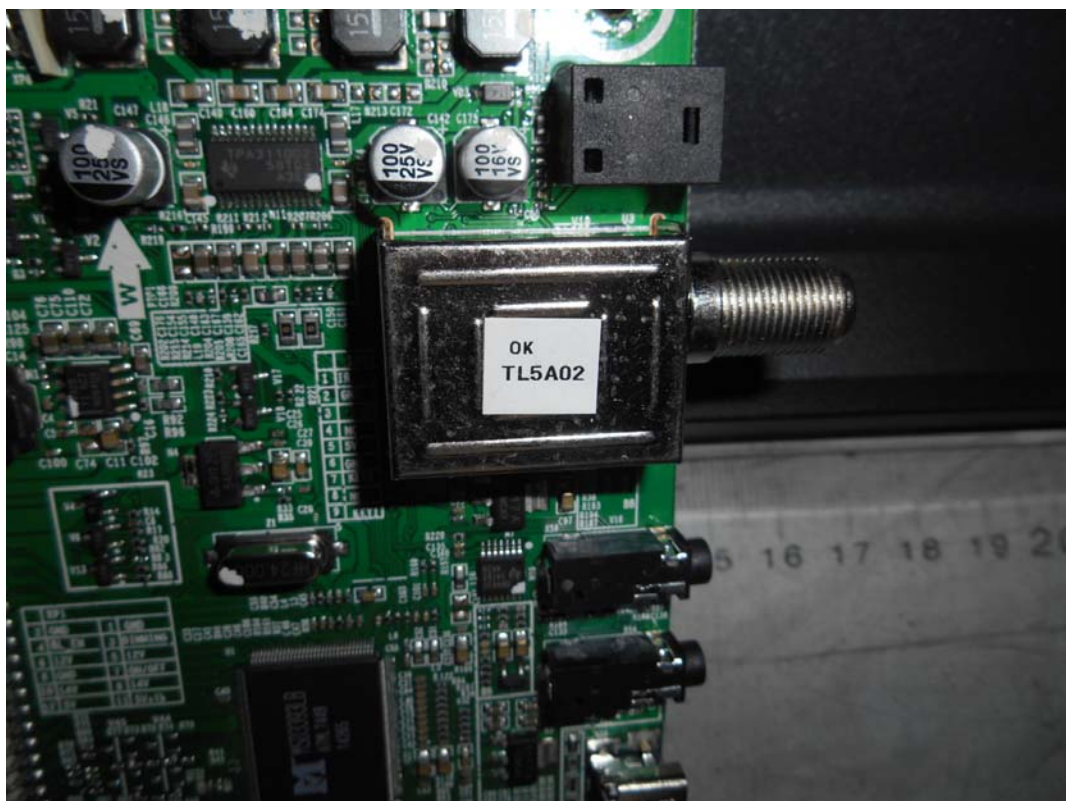


FIGURE 9  
LED LCD TV (M/N: LC-50N3100U)  
CHIP & CRYSTAL ON TUNER BOARD

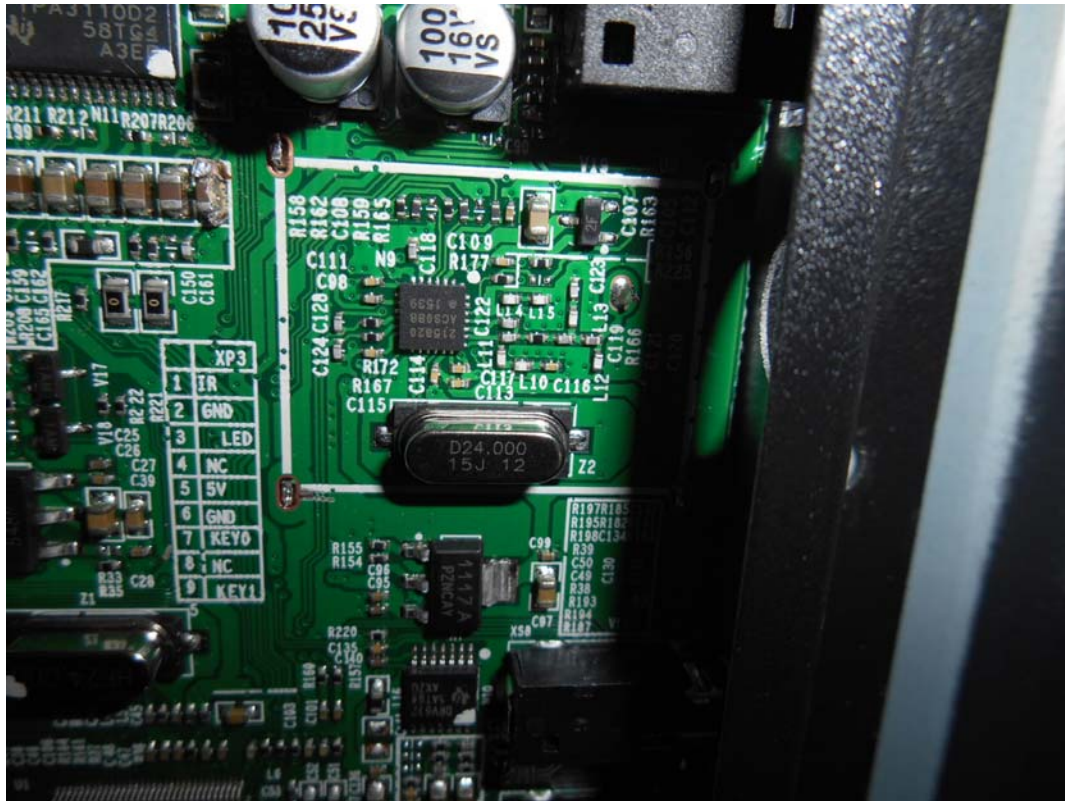


FIGURE 10  
LED LCD TV (M/N: LC-50N3100U)  
PANEL BOARD (COMPONENT SIDE)



FIGURE 11  
LED LCD TV (M/N: LC-50N3100U)  
PANEL BOARD (SOLDERED SIDE)

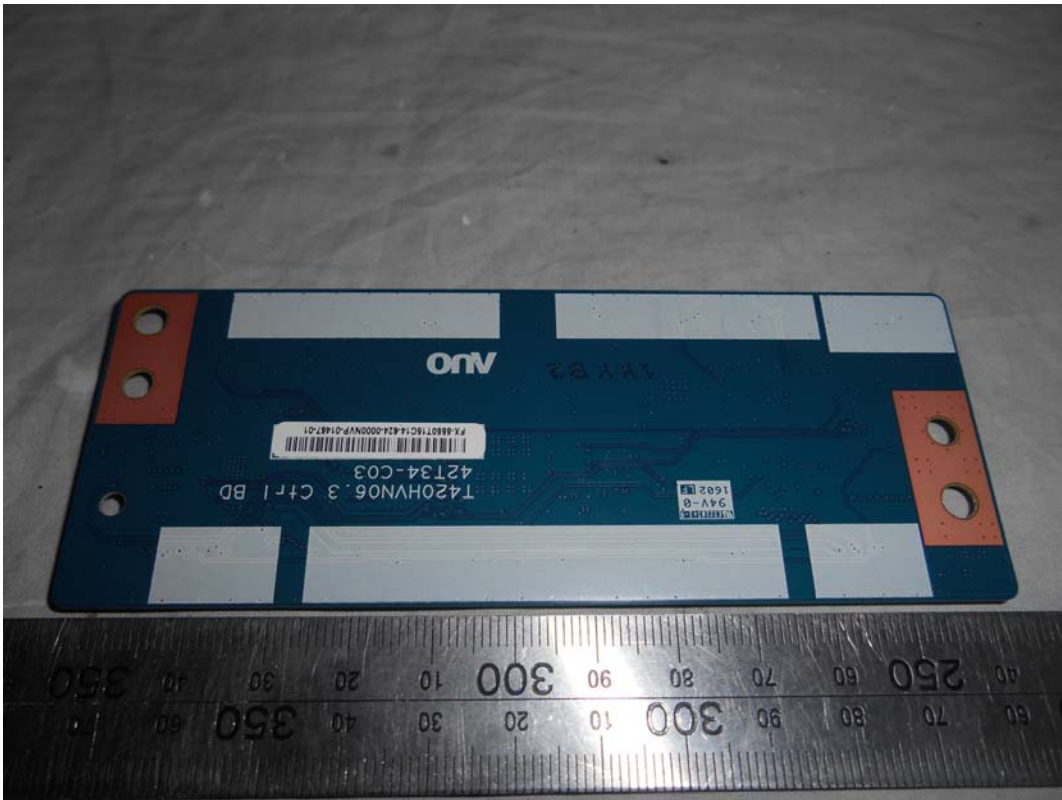


FIGURE 12  
LED LCD TV (M/N: LC-50N3100U)  
CHIP ON PANEL BOARD

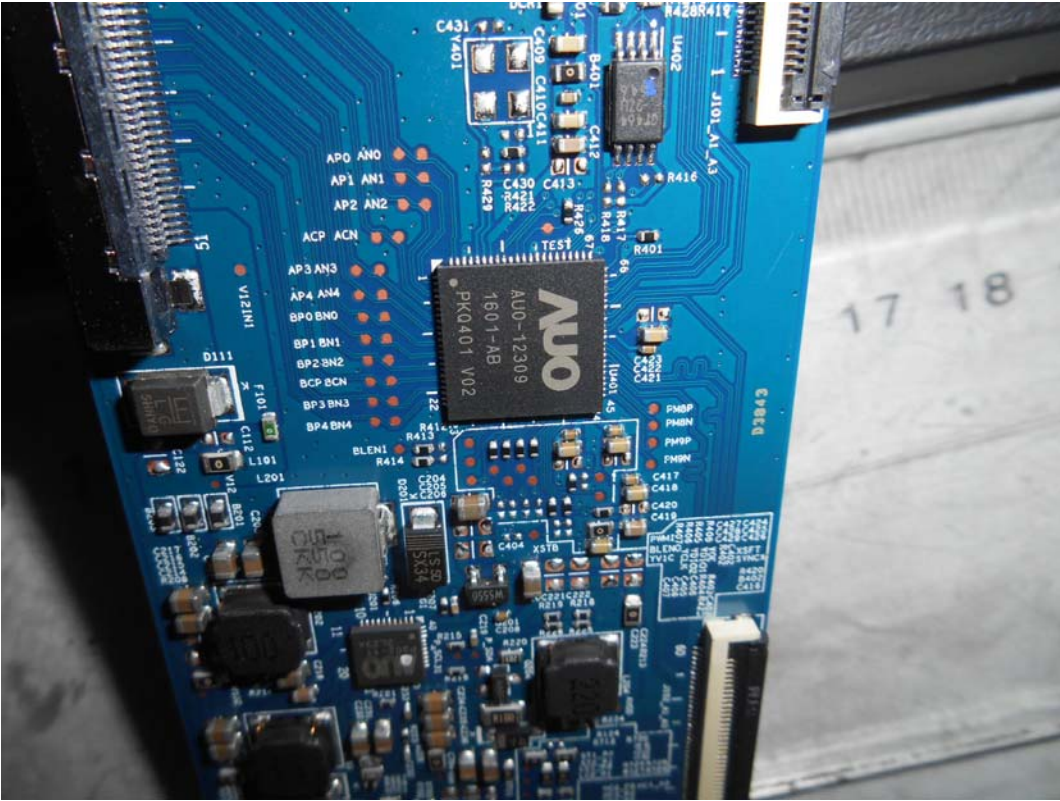


FIGURE 13  
LED LCD TV (M/N: LC-50N3100U)  
KEY BOARD (COMPONENT SIDE)

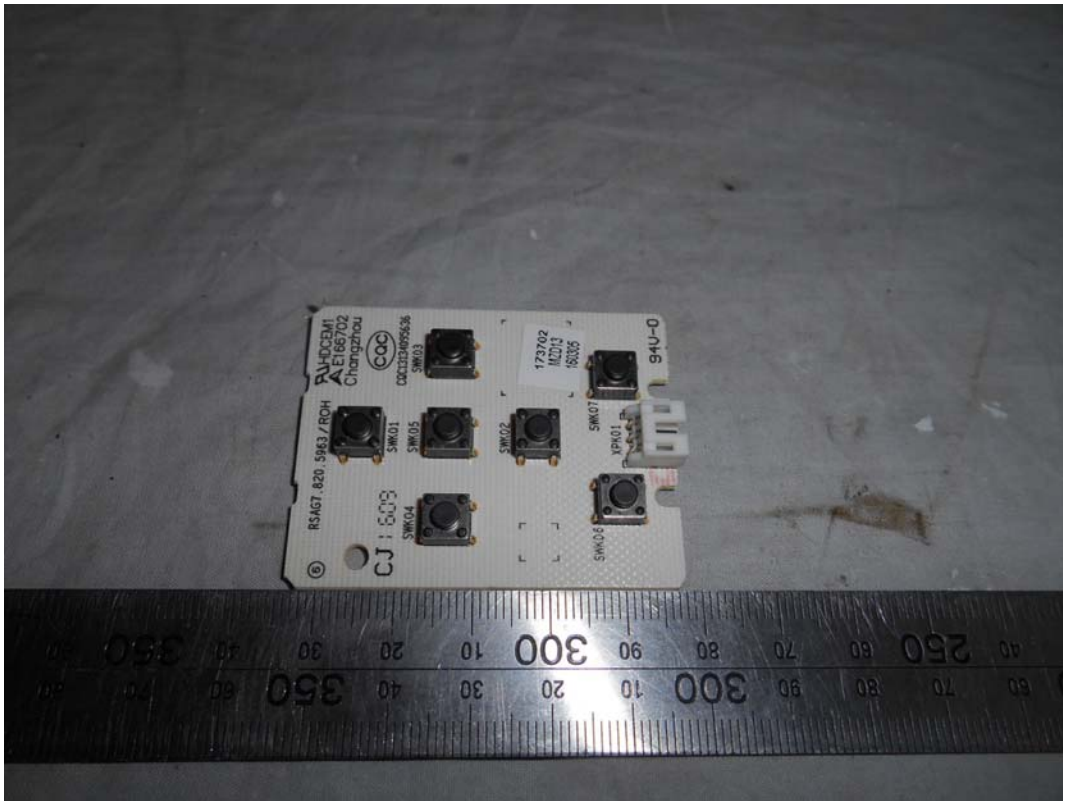


FIGURE 14  
LED LCD TV (M/N: LC-50N3100U)  
KEY BOARD (SOLDERED SIDE)

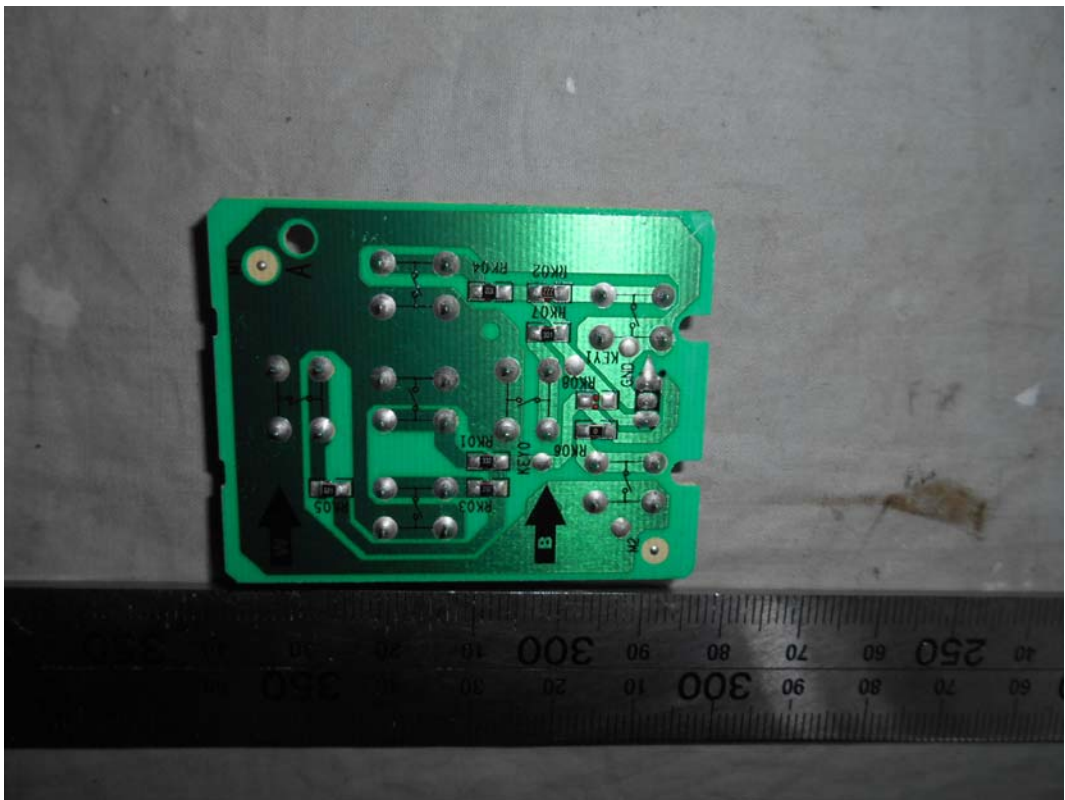




FIGURE 15  
LED LCD TV (M/N: LC-50N3100U)  
IR BOARD (COMPONENT SIDE)

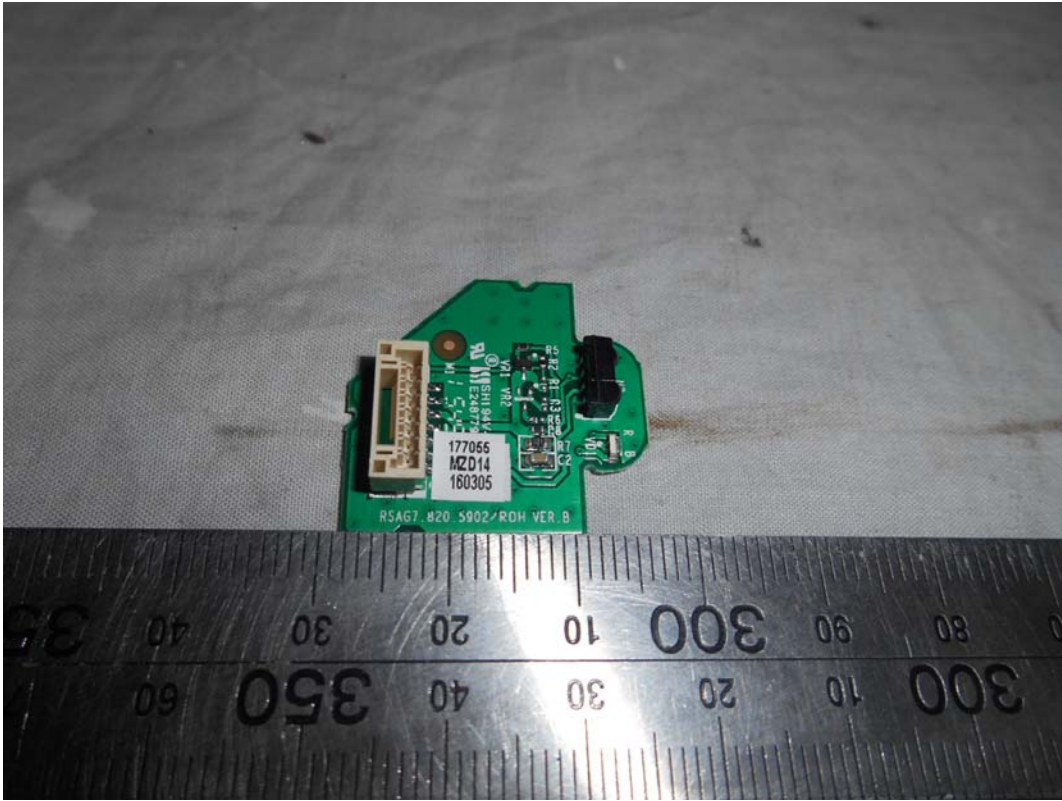


FIGURE 16  
LED LCD TV (M/N: LC-50N3100U)  
IR BOARD (SOLDERED SIDE)

