

FIGURE 1
LED LCD TV (M/N: LTDN50K2207WUS)
COVER REMOVED



FIGURE 2
LED LCD TV (M/N: LTDN50K2207WUS)
LCD PANEL LABEL



FIGURE 3
LED LCD TV (M/N: LTDN50K2207WUS)
POWER BOARD (COMPONENT SIDE)



FIGURE 4
LED LCD TV (M/N: LTDN50K2207WUS)
POWER BOARD (SOLDERED SIDE)

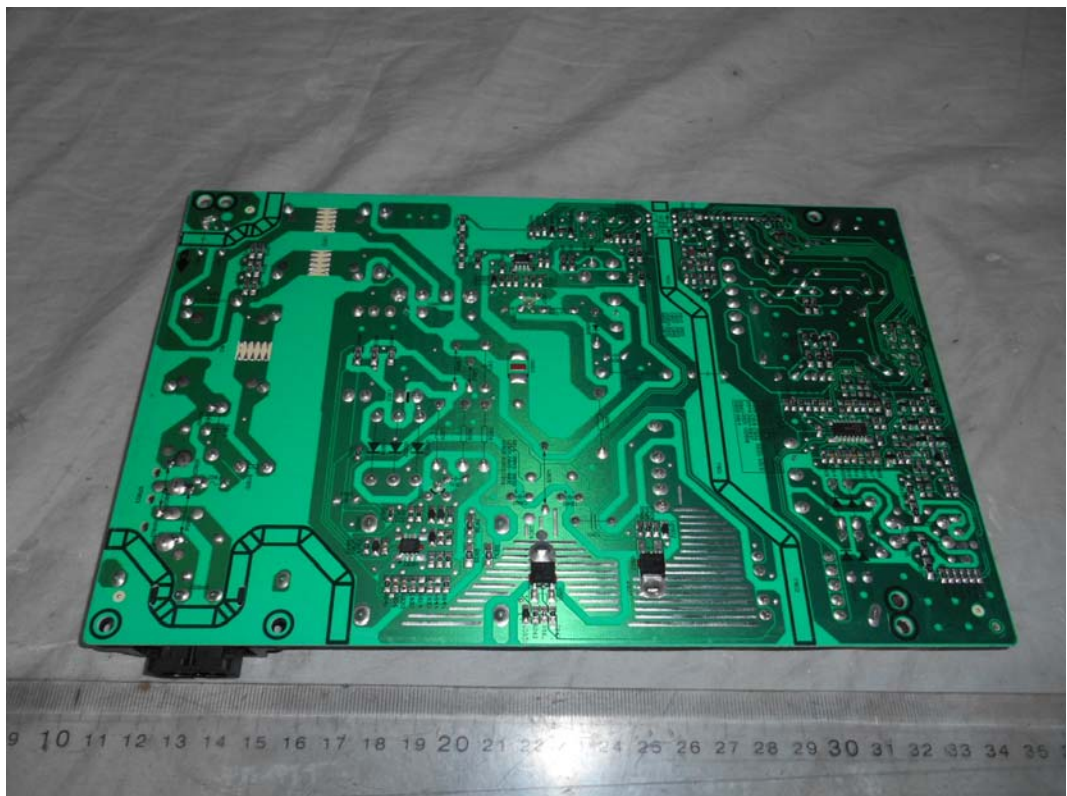


FIGURE 5
LED LCD TV (M/N: LTDN50K2207WUS)
MAIN BOARD (COMPONENT SIDE)



FIGURE 6
LED LCD TV (M/N: LTDN50K2207WUS)
MAIN BOARD (SOLDERED SIDE)

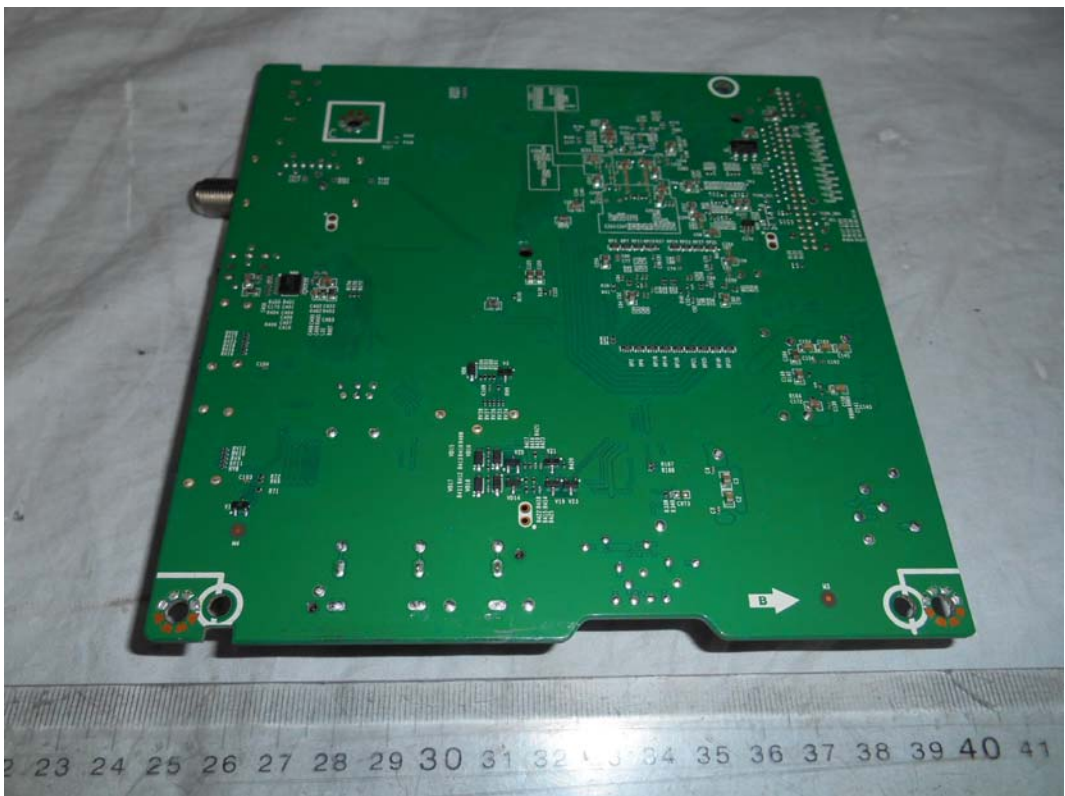


FIGURE 7
LED LCD TV (M/N: LTDN50K2207WUS)
CHIP & CRYSTAL ON MAIN BOARD

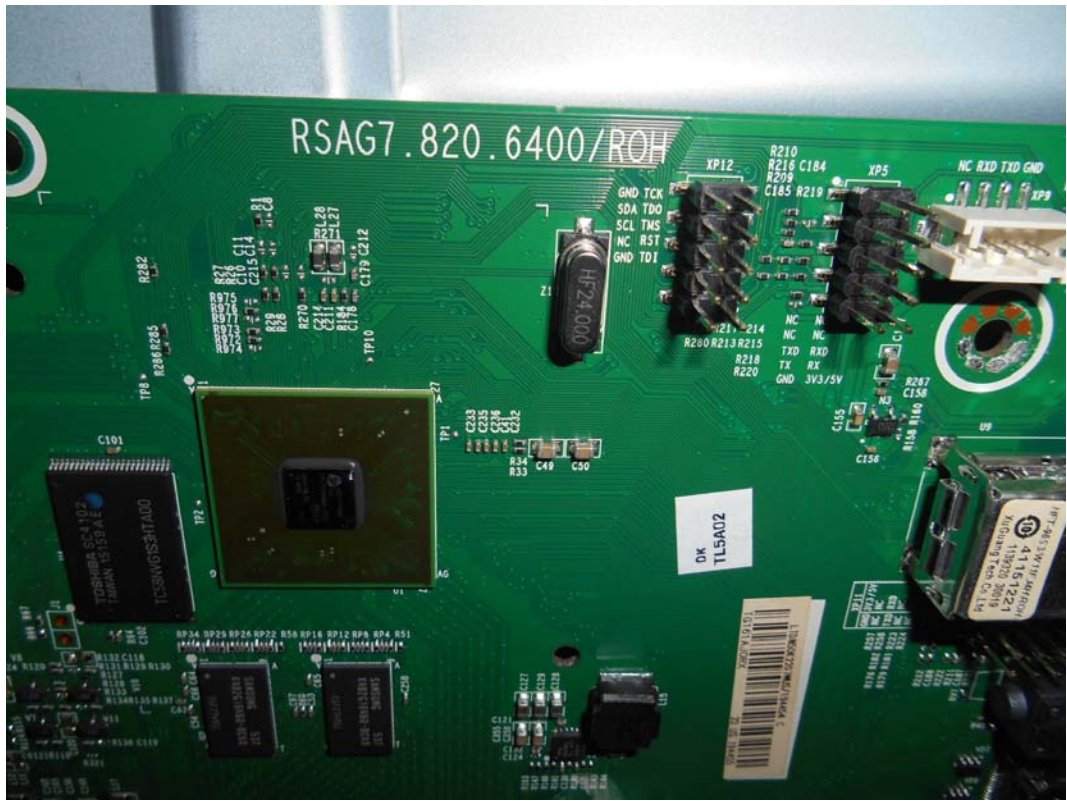


FIGURE 8
LED LCD TV (M/N: LTDN50K2207WUS)
TUNER



FIGURE 9
LED LCD TV (M/N: LTDN50K2207WUS)
TUNER BOARD (COMPONENT SIDE)

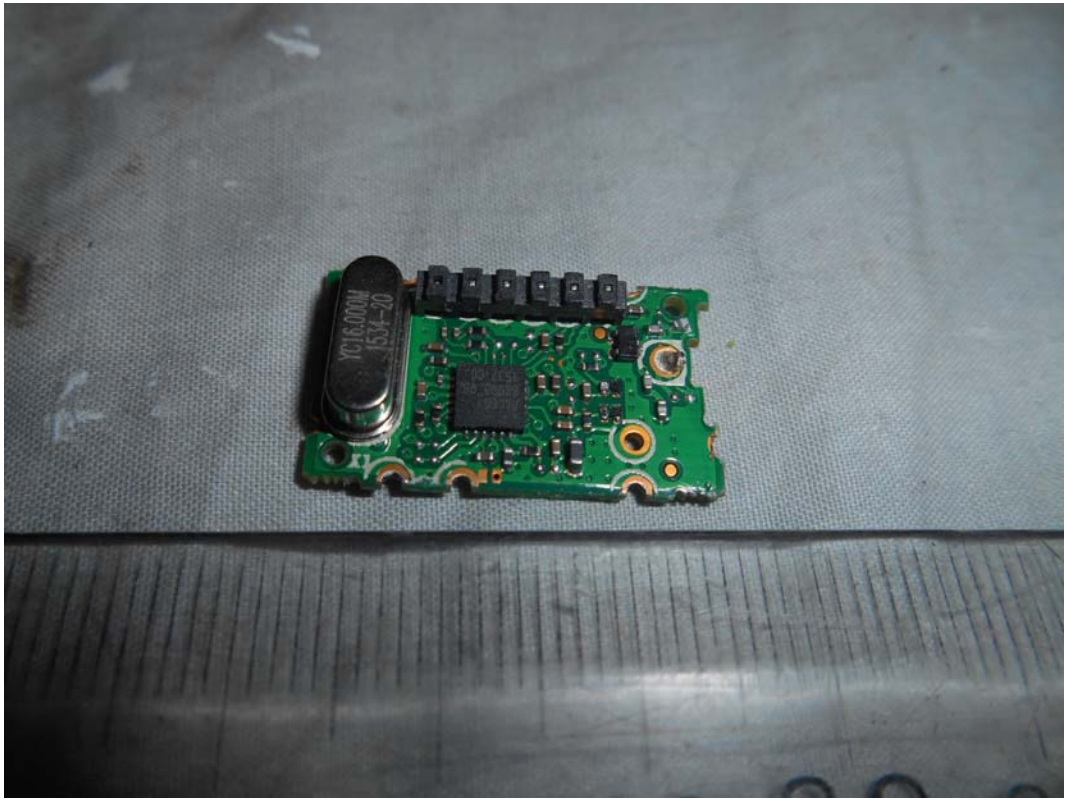


FIGURE 10
LED LCD TV (M/N: LTDN50K2207WUS)
TUNER BOARD (SOLDERED SIDE)

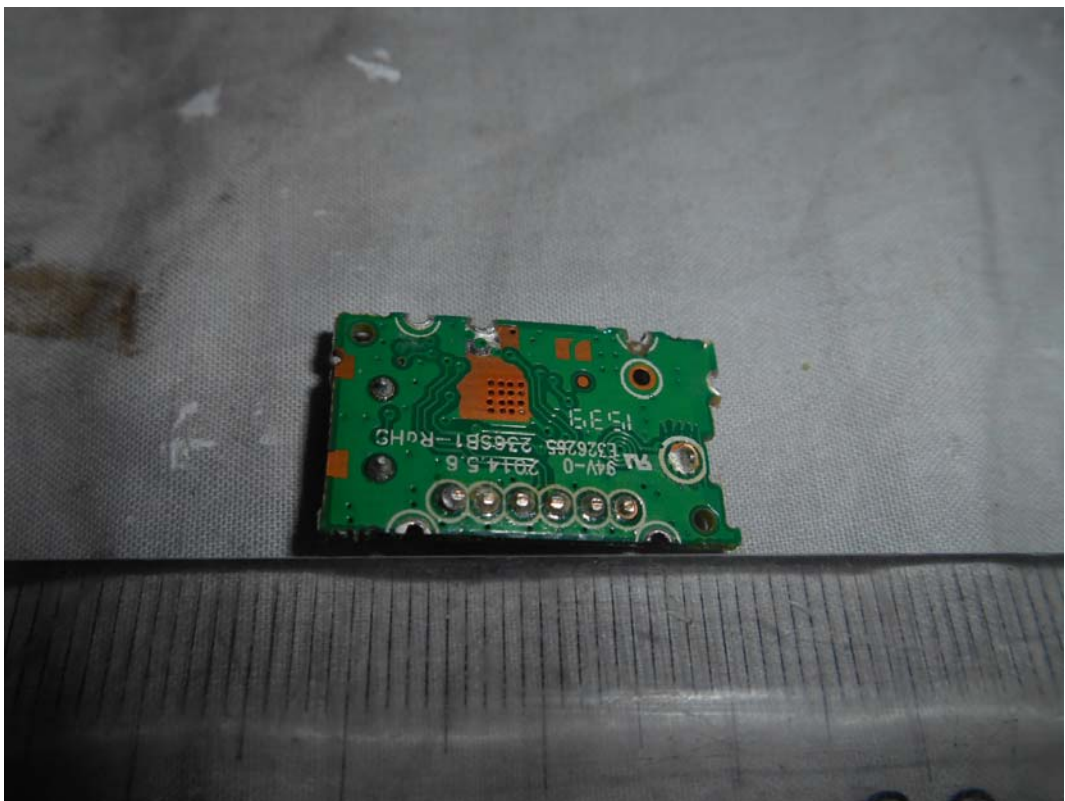


FIGURE 11
LED LCD TV (M/N: LTDN50K2207WUS)
CHIP & CRYSTAL ON TUNER BOARD



FIGURE 12
LED LCD TV (M/N: LTDN50K2207WUS)
PANEL BOARD (COMPONENT SIDE)



FIGURE 13
LED LCD TV (M/N: LTDN50K2207WUS)
PANEL BOARD (SOLDERED SIDE)



FIGURE 14
LED LCD TV (M/N: LTDN50K2207WUS)
CHIP ON MAIN BOARD

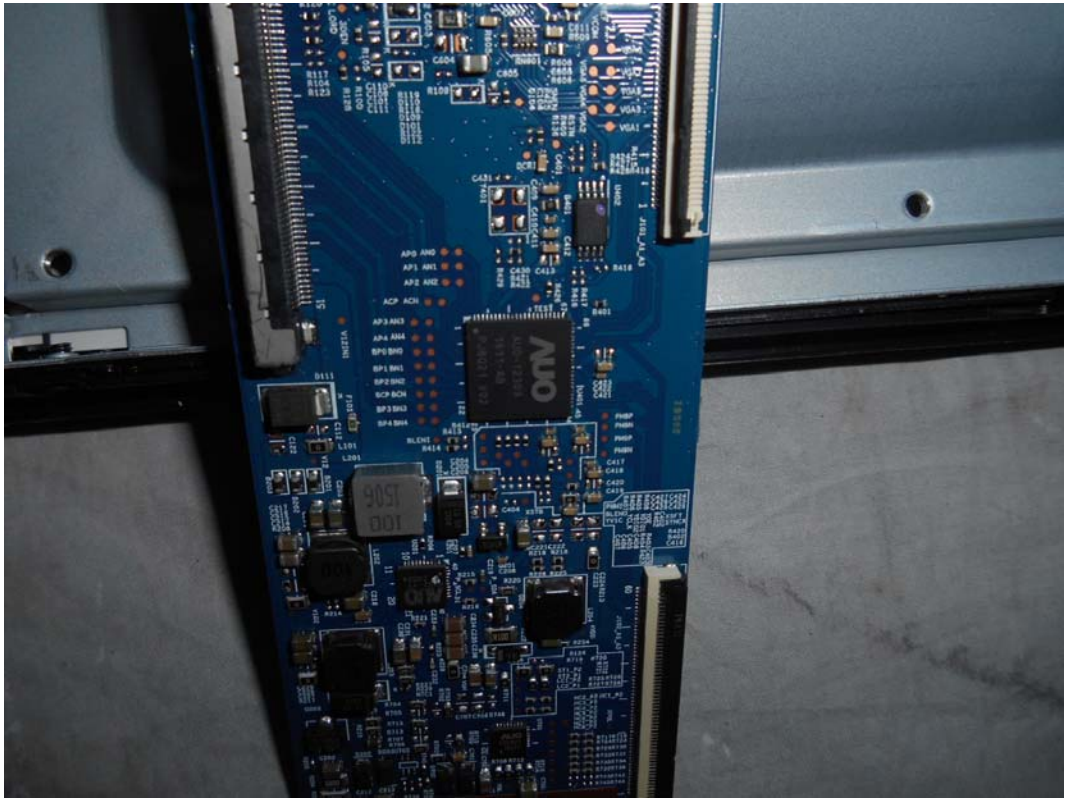


FIGURE 15
LED LCD TV (M/N: LTDN50K2207WUS)
RF BOARD (COMPONENT SIDE)



FIGURE 16
LED LCD TV (M/N: LTDN50K2207WUS)
RF BOARD (SOLDERED SIDE)

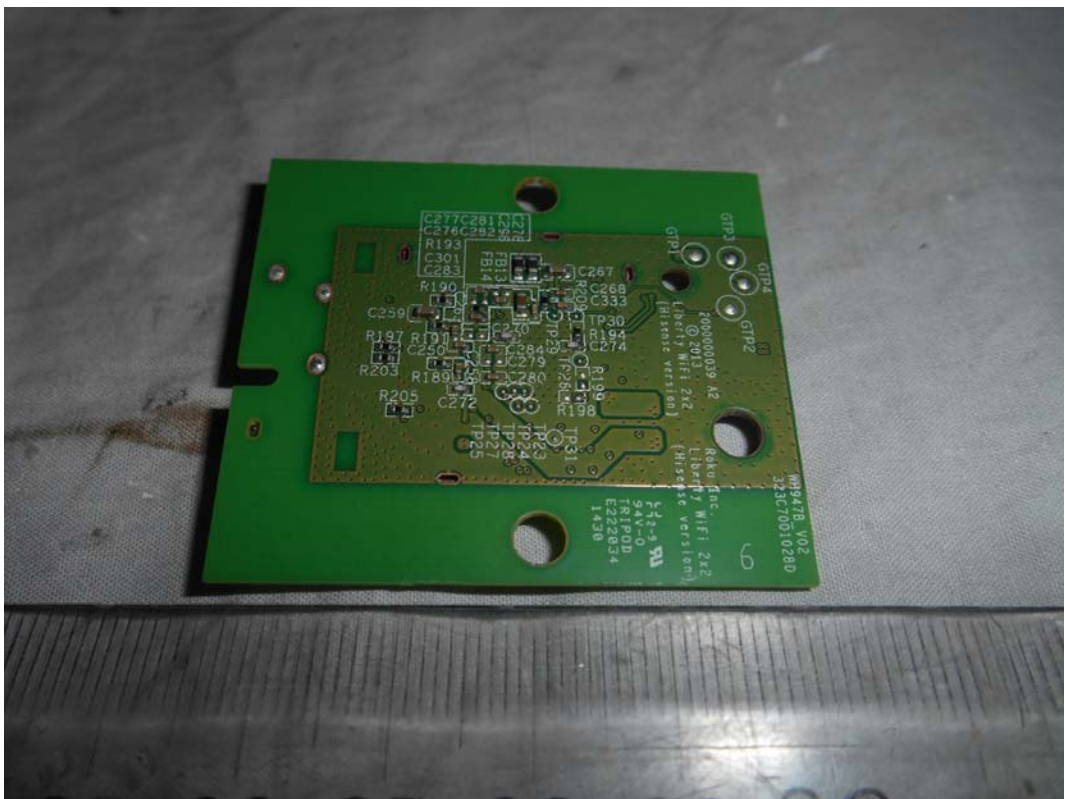


FIGURE 17
LED LCD TV (M/N: LTDN50K2207WUS)
RF BOARD LABEL



FIGURE 18
LED LCD TV (M/N: LTDN50K2207WUS)
RF BOARD COVER REMOVED

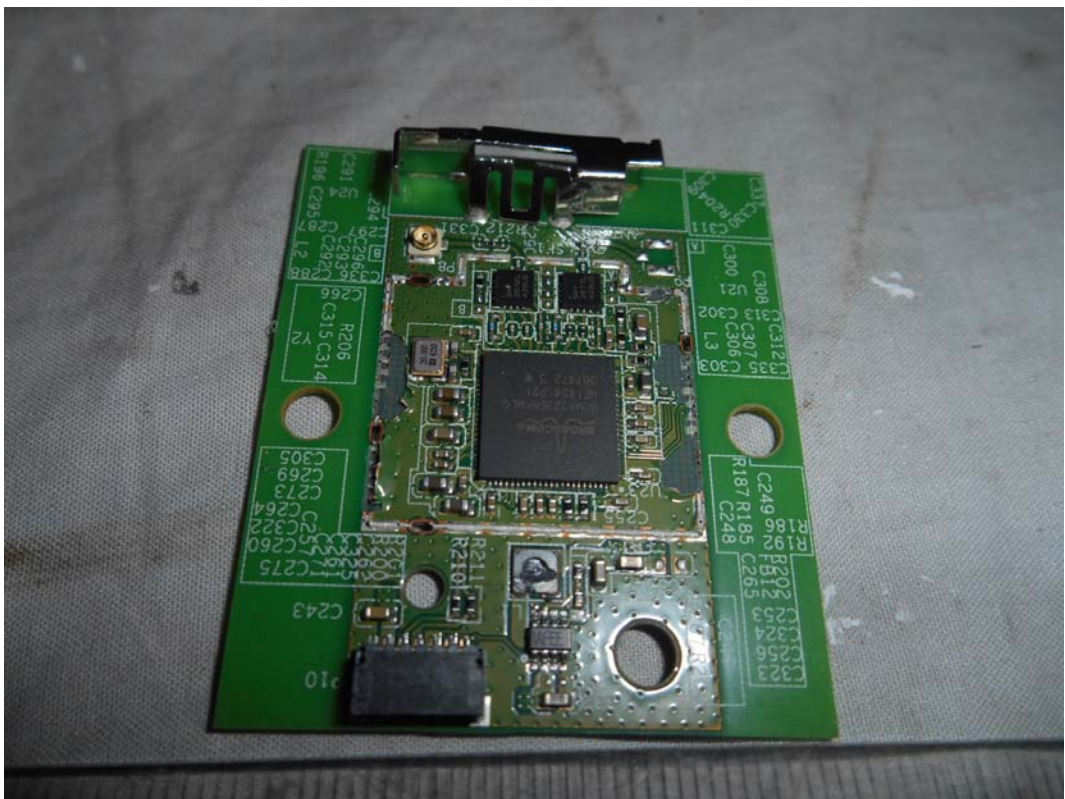


FIGURE 19
LED LCD TV (M/N: LTDN50K2207WUS)
KEY BOARD (COMPONENT SIDE)



FIGURE 20
LED LCD TV (M/N: LTDN50K2207WUS)
KEY BOARD (SOLDERED SIDE)

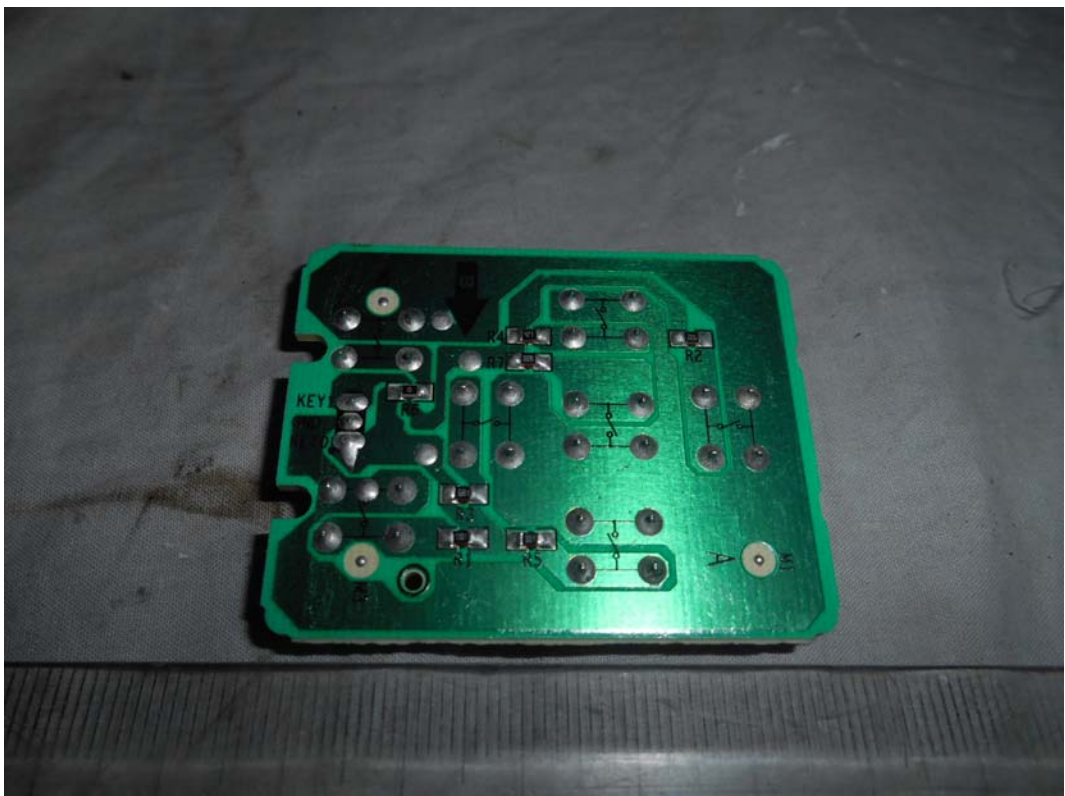


FIGURE 21
LED LCD TV (M/N: LTDN50K2207WUS)
IR BOARD (COMPONENT SIDE)

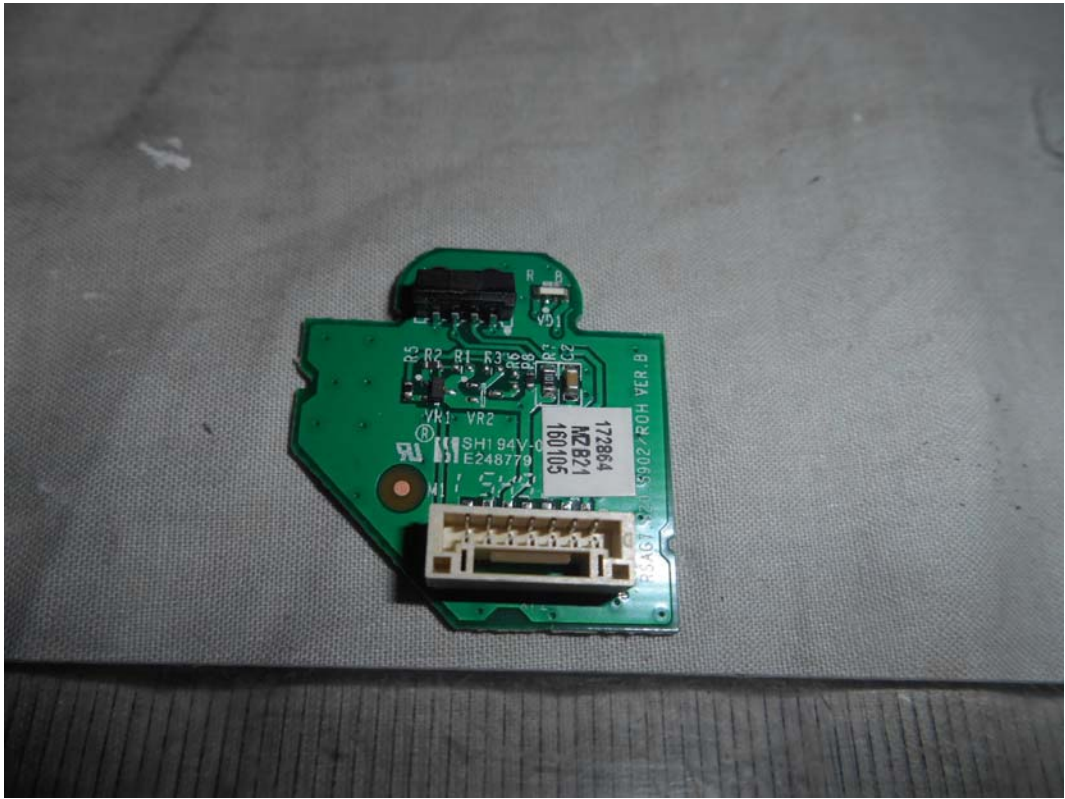


FIGURE 22
LED LCD TV (M/N: LTDN50K2207WUS)
IR BOARD (SOLDERED SIDE)

