

*FIGURE 1*  
*LED LCD TV (M/N: LC-55N6000U)*  
*GENERAL APPEARANCE (FRONT VIEW)*



*FIGURE 2*  
*LED LCD TV (M/N: LC-55N6000U)*  
*GENERAL APPEARANCE (BACK VIEW)*



FIGURE 3  
LED LCD TV (M/N: LC-55N6000U)  
AC PORT



FIGURE 4  
LED LCD TV (M/N: LC-55N6000U)  
PORT#1



FIGURE 5  
LED LCD TV (M/N: LC-55N6000U)  
PORT #2



FIGURE 6  
LED LCD TV (M/N: LC-55N6000U)  
COVER REMOVED



FIGURE 7  
LED LCD TV (M/N: LC-55N6000U)  
LCD PANEL LABEL



FIGURE 8  
LED LCD TV (M/N: LC-55N6000U)  
PANEL BOARD (COMPONENT SIDE)

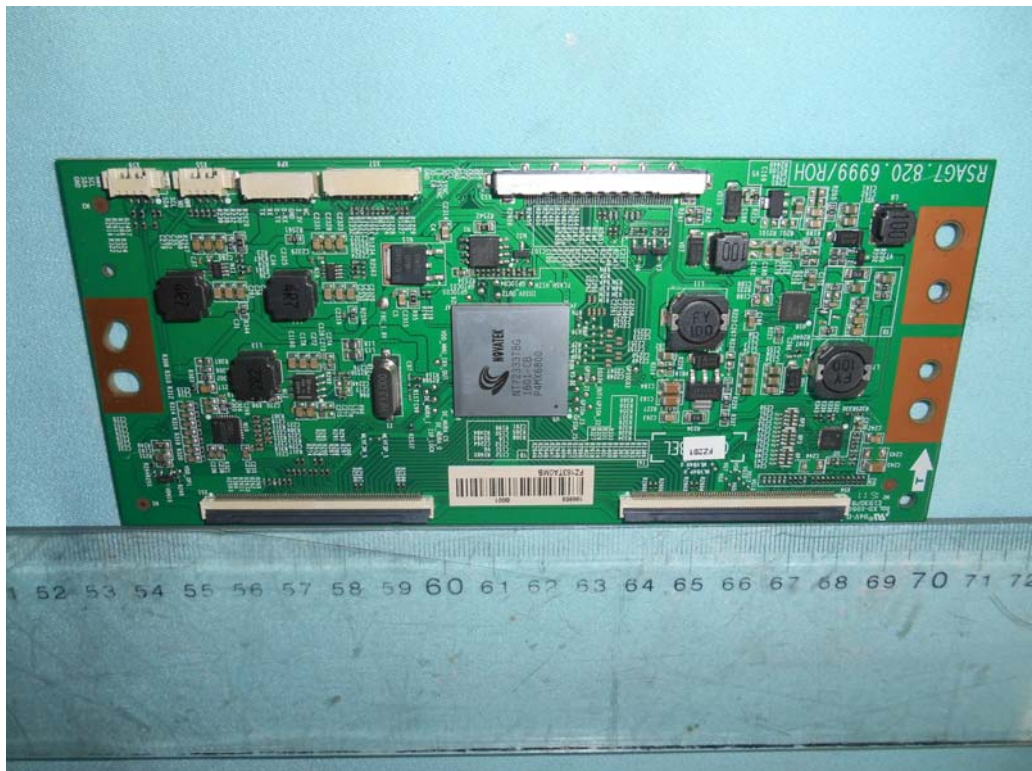


FIGURE 9  
LED LCD TV (M/N: LC-55N6000U)  
PANEL BOARD (SOLDERED SIDE)

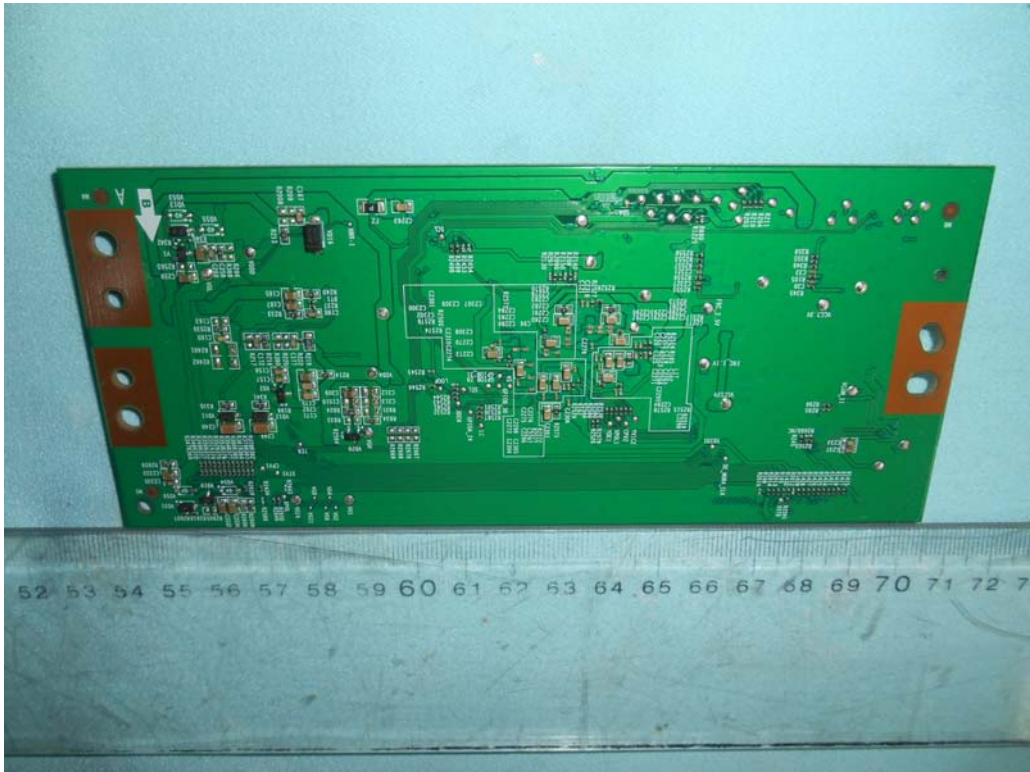
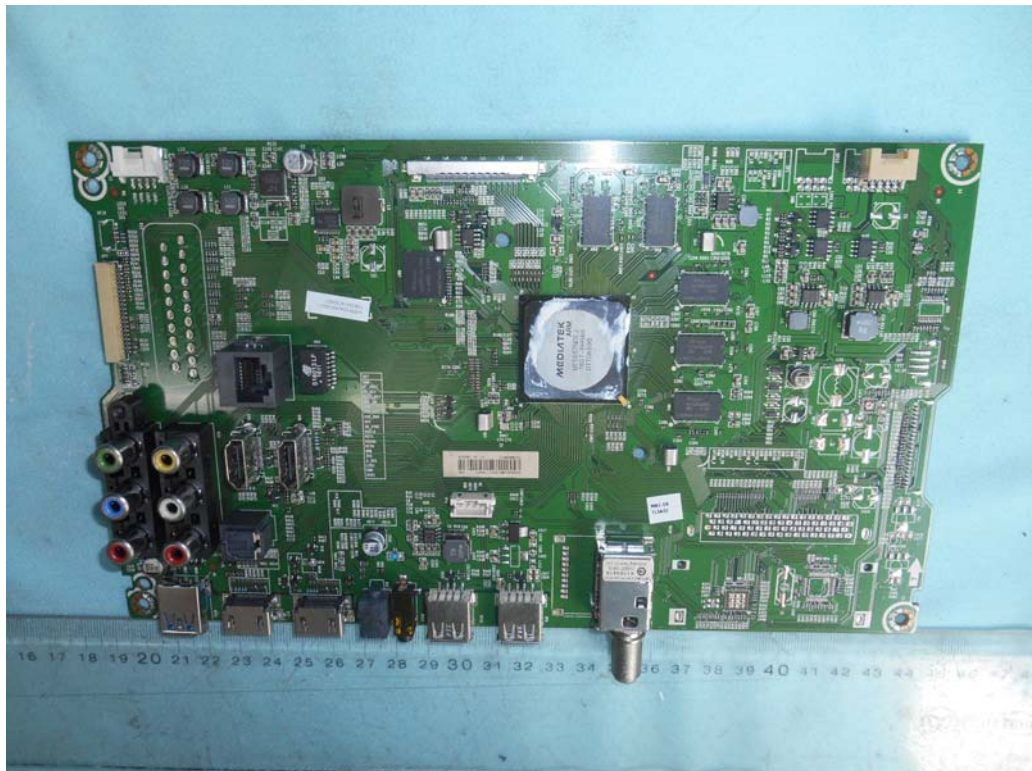


FIGURE 10  
LED LCD TV (M/N: LC-55N6000U)  
CHIP & CRYSTAL ON PANEL BOARD



*FIGURE 11*  
*LED LCD TV (M/N: LC-55N6000U)*  
*MAIN BOARD (COMPONENT SIDE)*



*FIGURE 12*  
*LED LCD TV (M/N: LC-55N6000U)*  
*MAIN BOARD (SOLDERED SIDE)*

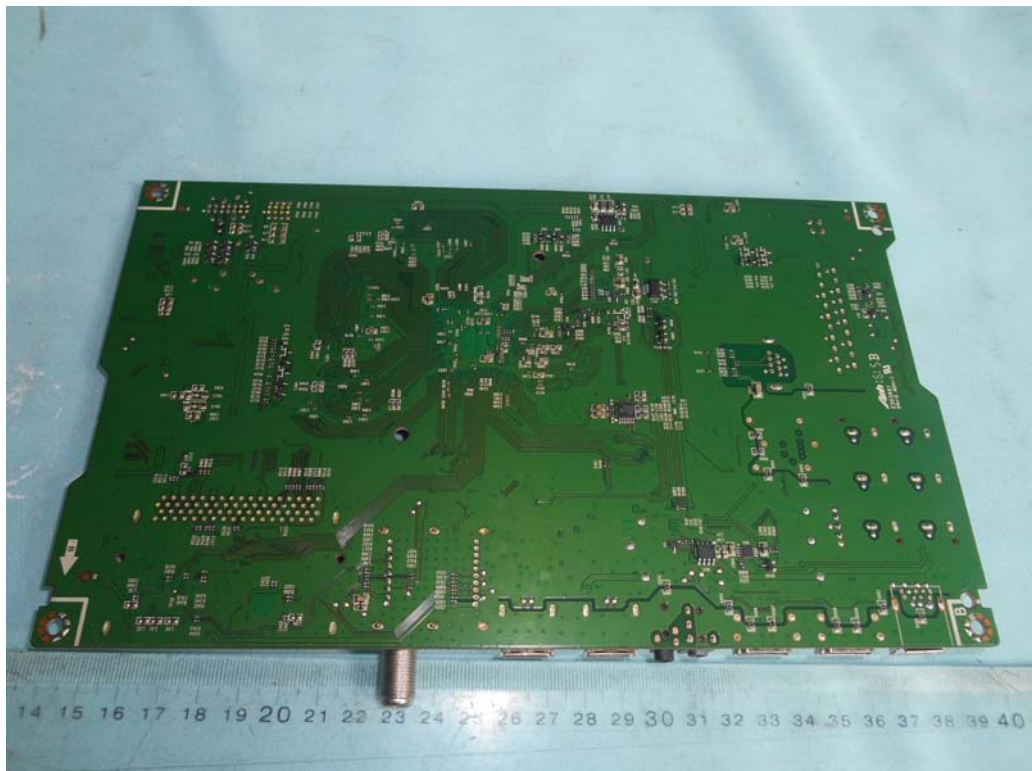


FIGURE 13  
LED LCD TV (M/N: LC-55N6000U)  
CHIP & CRYSTAL ON MAIN BOARD



FIGURE 14  
LED LCD TV (M/N: LC-55N6000U)  
POWER BOARD (COMPONENT SIDE)

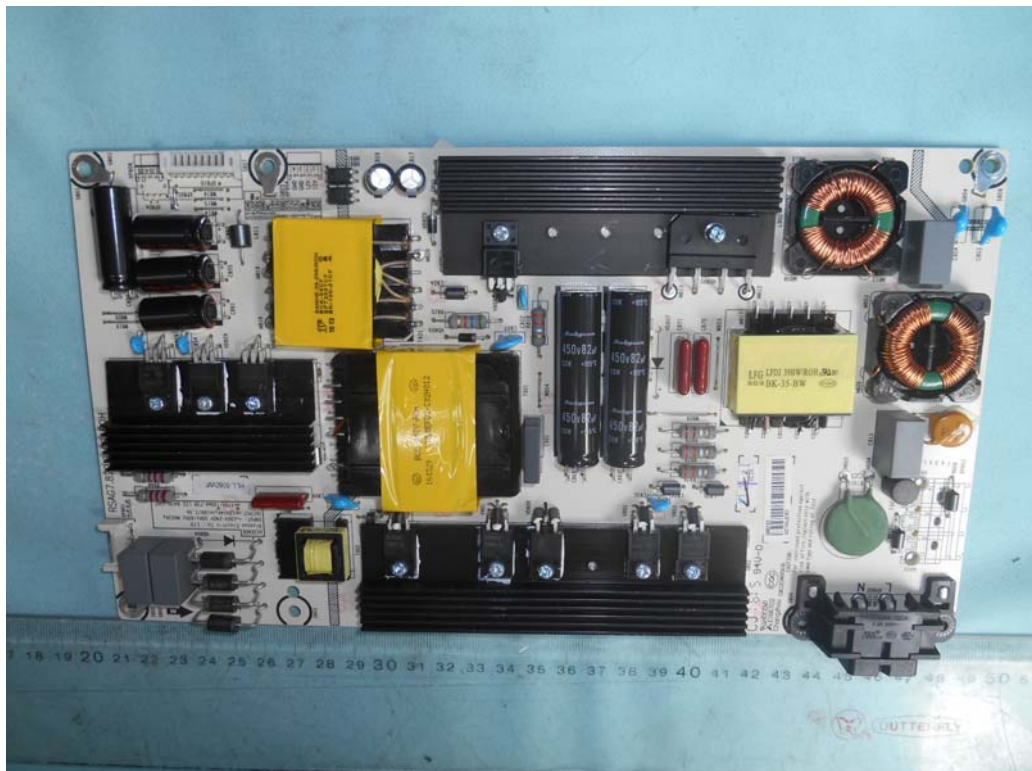


FIGURE 15  
LED LCD TV (M/N: LC-55N6000U)  
POWER BOARD (SOLDERED SIDE)

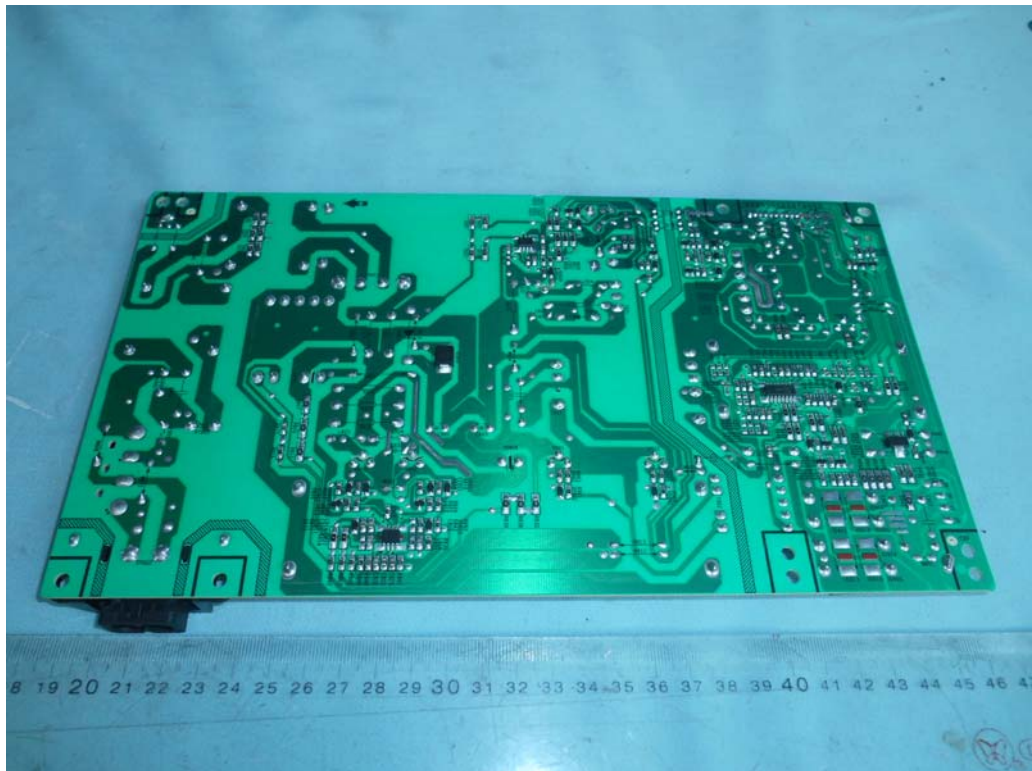


FIGURE 16  
LED LCD TV (M/N: LC-55N6000U)  
TUNER





FIGURE 17  
LED LCD TV (M/N: LC-55N6000U)  
TUNER BOARD (COMPONENT SIDE)



FIGURE 18  
LED LCD TV (M/N: LC-55N6000U)  
TUNER BOARD (SOLDERED SIDE)

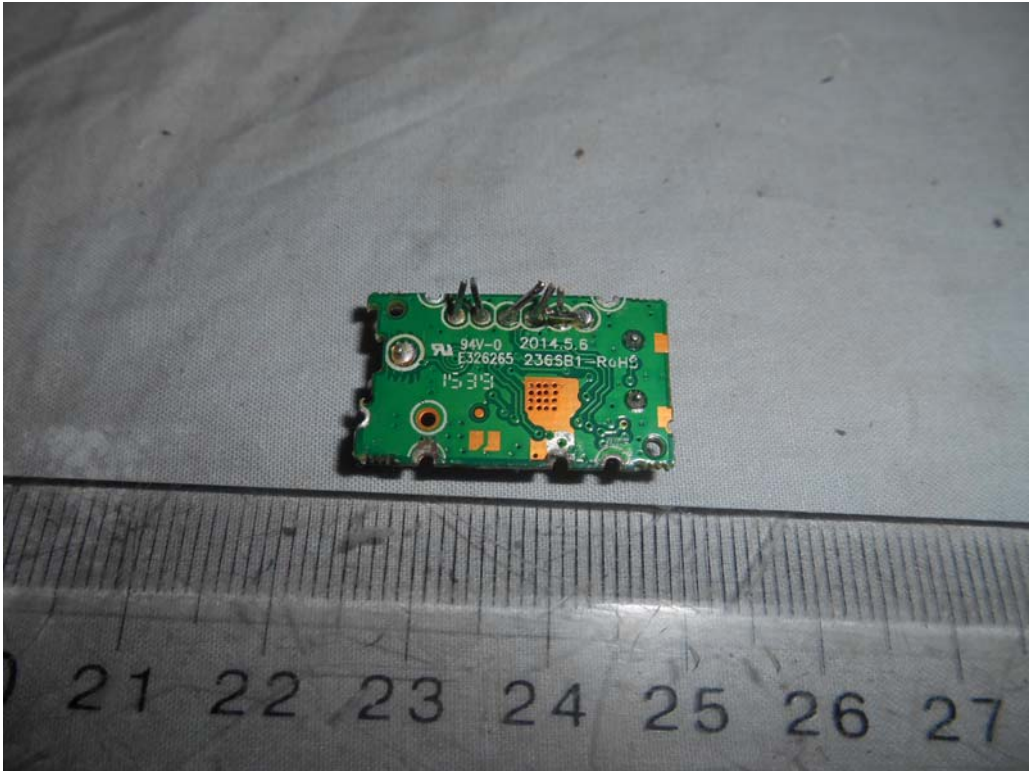


FIGURE 19  
LED LCD TV (M/N: LC-55N6000U)  
CHIP & CRYSTAL ON TUNER BOARD

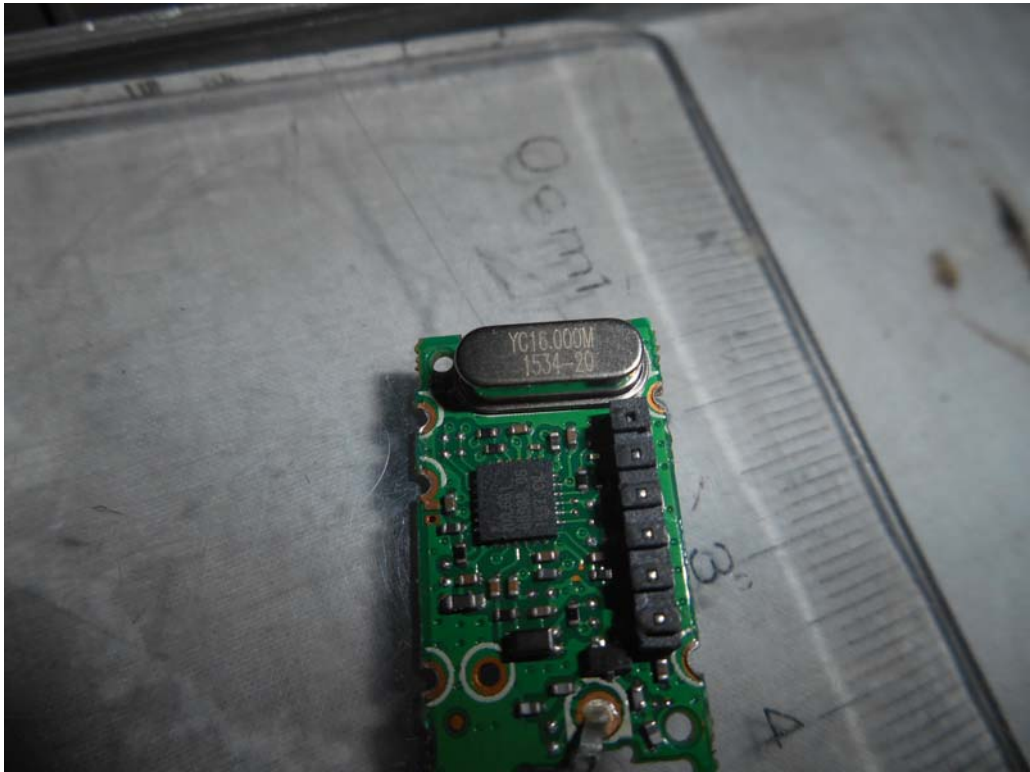


FIGURE 20  
LED LCD TV (M/N: LC-55N6000U)  
IR BOARD (COMPONENT SIDE)

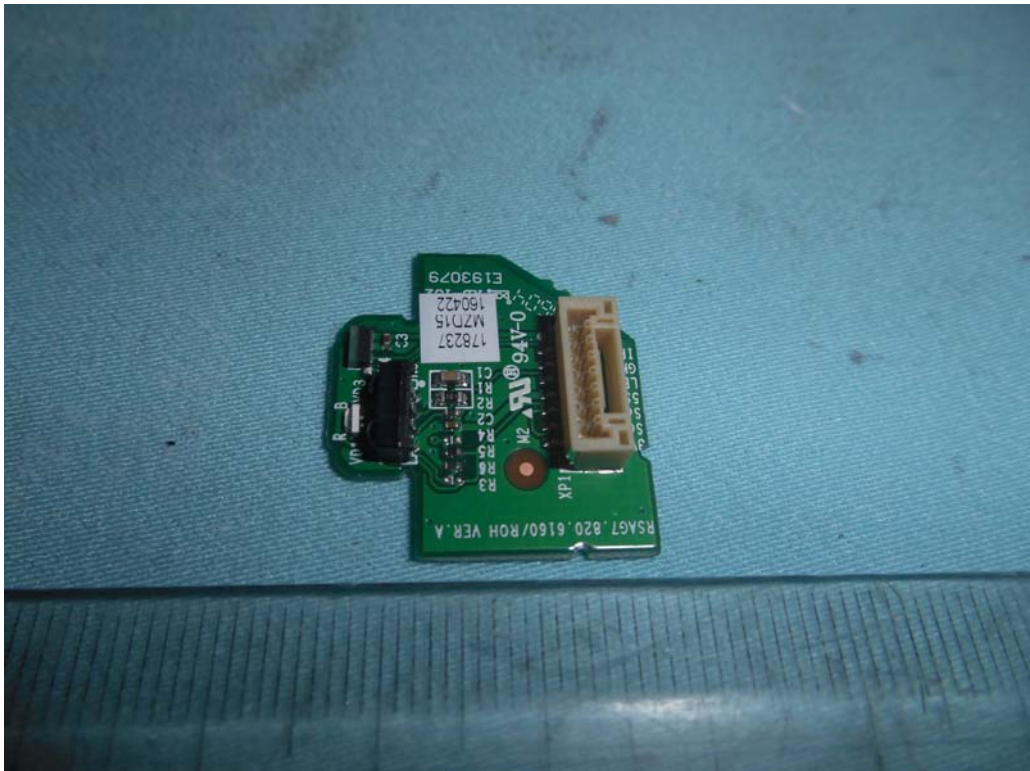


FIGURE 21  
LED LCD TV (M/N: LC-55N6000U)  
IR BOARD (SOLDERED SIDE)

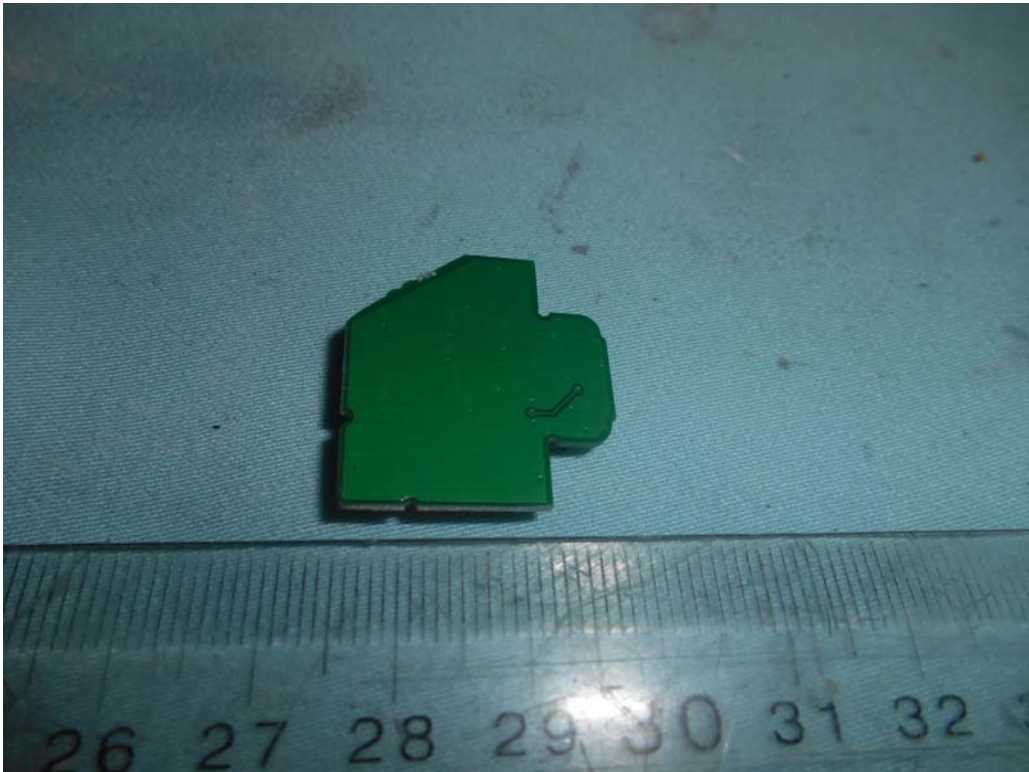


FIGURE 22  
LED LCD TV (M/N: LC-55N6000U)  
KEY BOARD (COMPONENT SIDE)

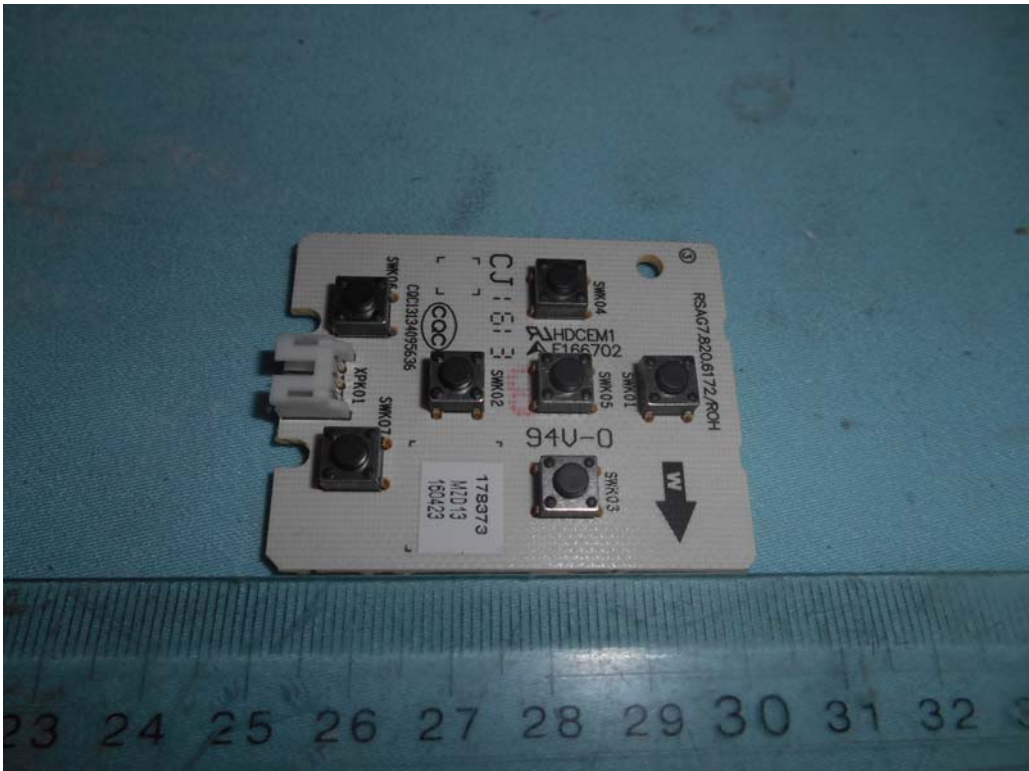


FIGURE 23  
LED LCD TV (M/N: LC-55N6000U)  
KEY BOARD (SOLDERED SIDE)

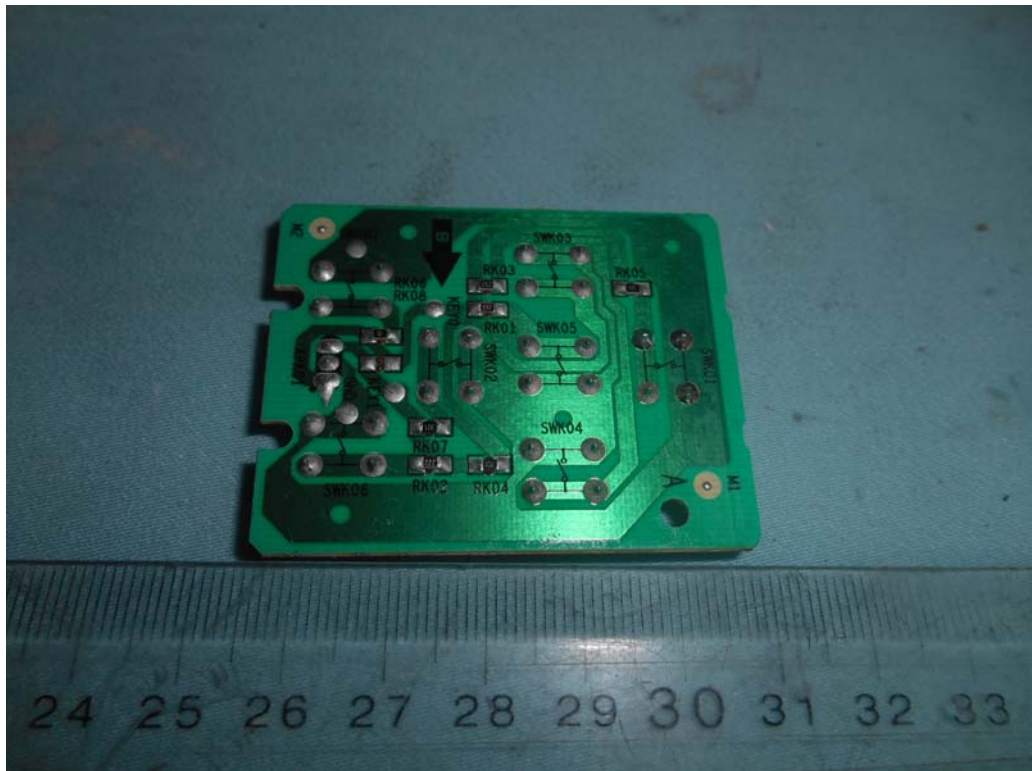


FIGURE 24  
LED LCD TV (M/N: LC-55N6000U)  
RF BOARD (COMPONENT SIDE)



FIGURE 25  
LED LCD TV (M/N: LC-55N6000U)  
RF BOARD (SOLDERED SIDE)

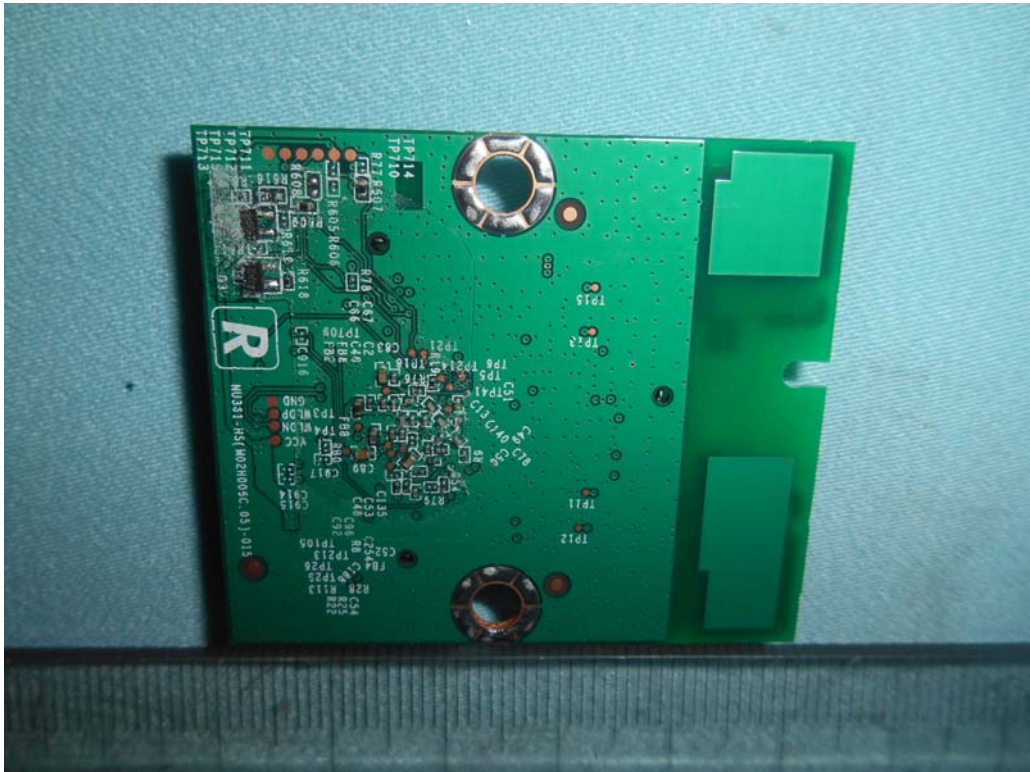


FIGURE 26  
LED LCD TV (M/N: LC-55N6000U)  
RF BOARD LABEL



FIGURE 27  
LED LCD TV (M/N: LC-55N6000U)  
CHIP & CRYSTAL ON RF BOARD

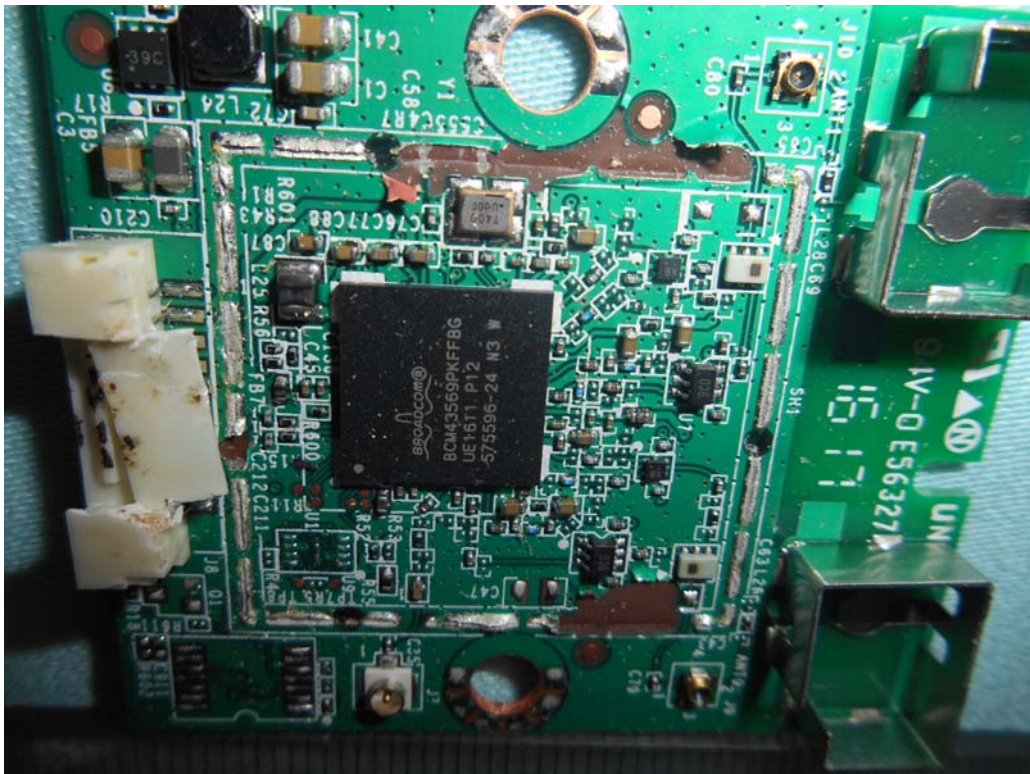


FIGURE 28  
LED LCD TV (M/N: LC-55N6000U)  
DEBUG #1

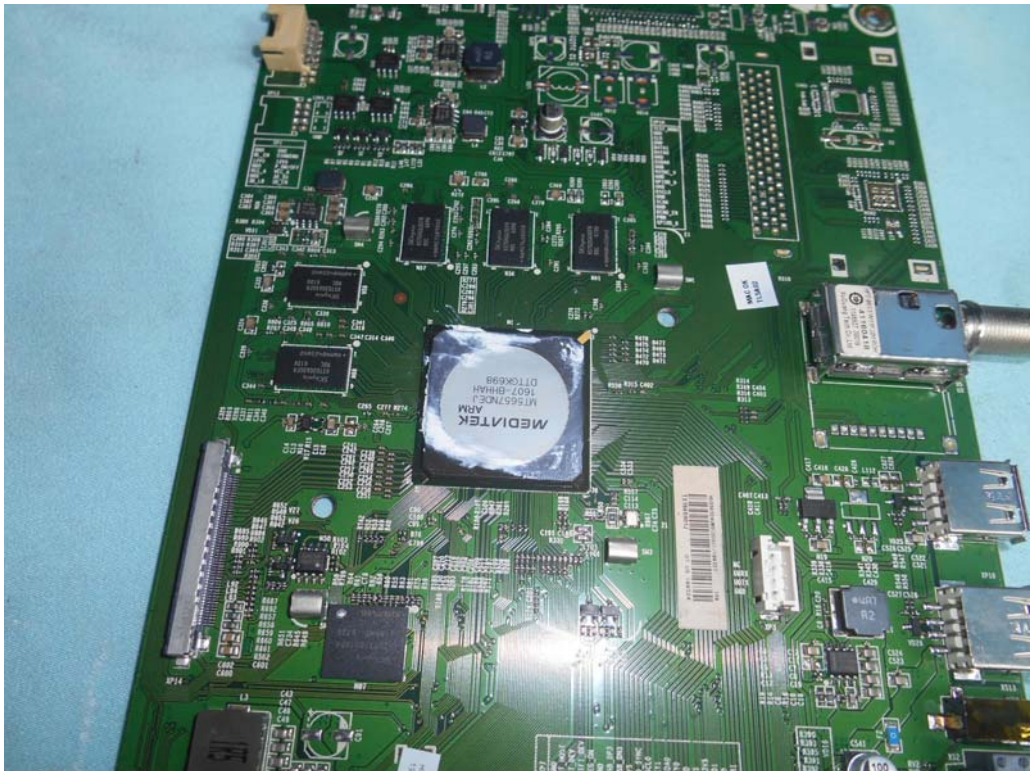


FIGURE 29  
LED LCD TV (M/N: LC-55N6000U)  
DEBUG #2

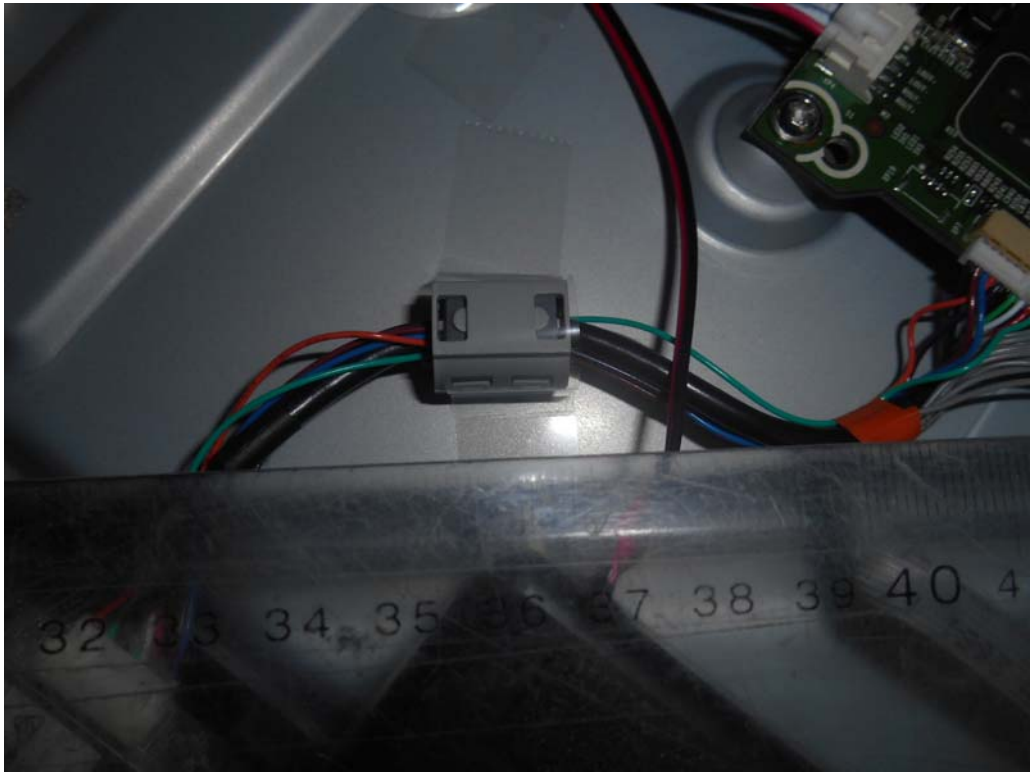


FIGURE 30  
LED LCD TV (M/N: LC-55N6000U)  
DEBUG #3

