

*FIGURE 1*  
*LED LCD TV (M/N: LC-60N5100U)*  
*COVER REMOVED*



FIGURE 2  
LED LCD TV (M/N: LC-60N5100U)  
LCD PANEL LABEL



*FIGURE 3*  
*LED LCD TV (M/N: LC-60N5100U)*  
*MAIN BOARD (COMPONENT SIDE)*



*FIGURE 4*  
*LED LCD TV (M/N: LC-60N5100U)*  
*MAIN BOARD (SOLDERED SIDE)*

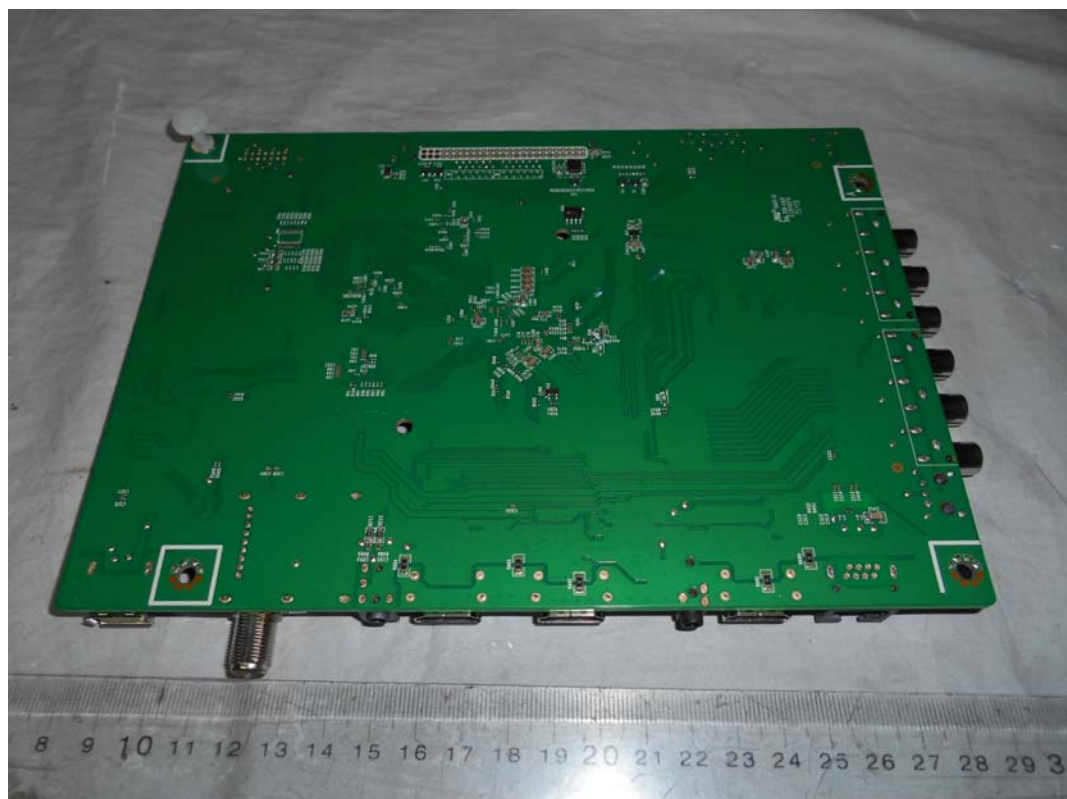




FIGURE 5  
LED LCD TV (M/N: LC-60N5100U)  
CHIP AND CRYSTAL ON MAIN BOARD

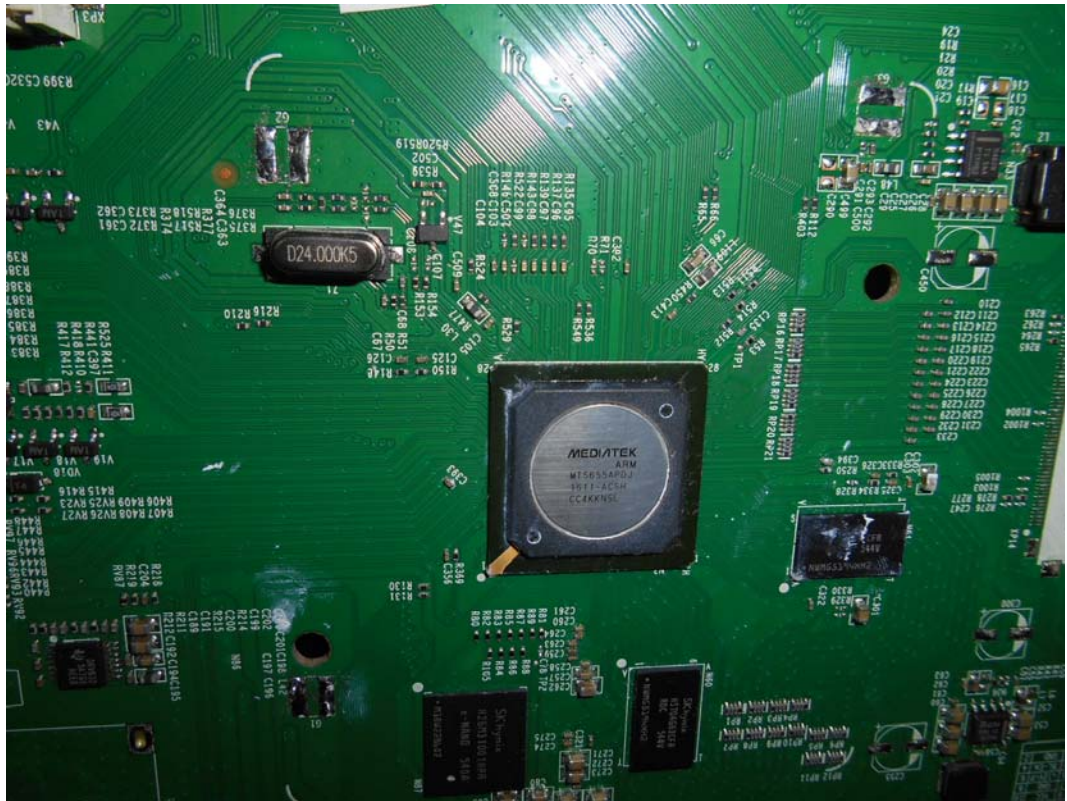
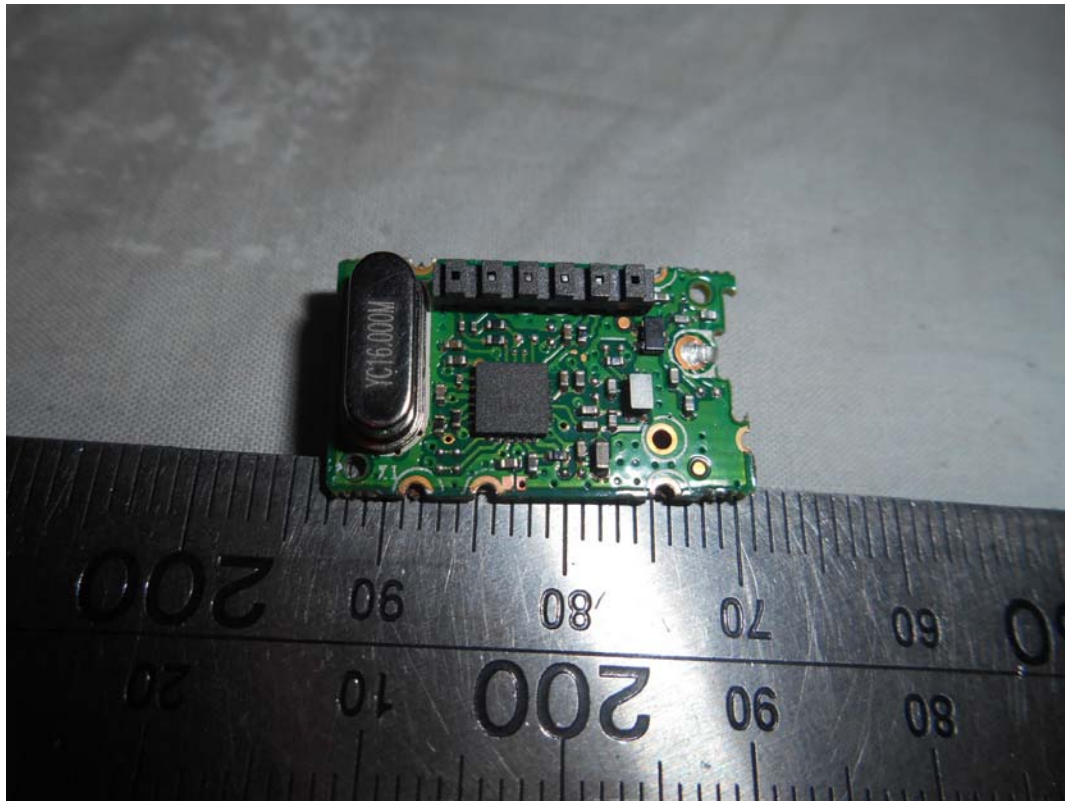


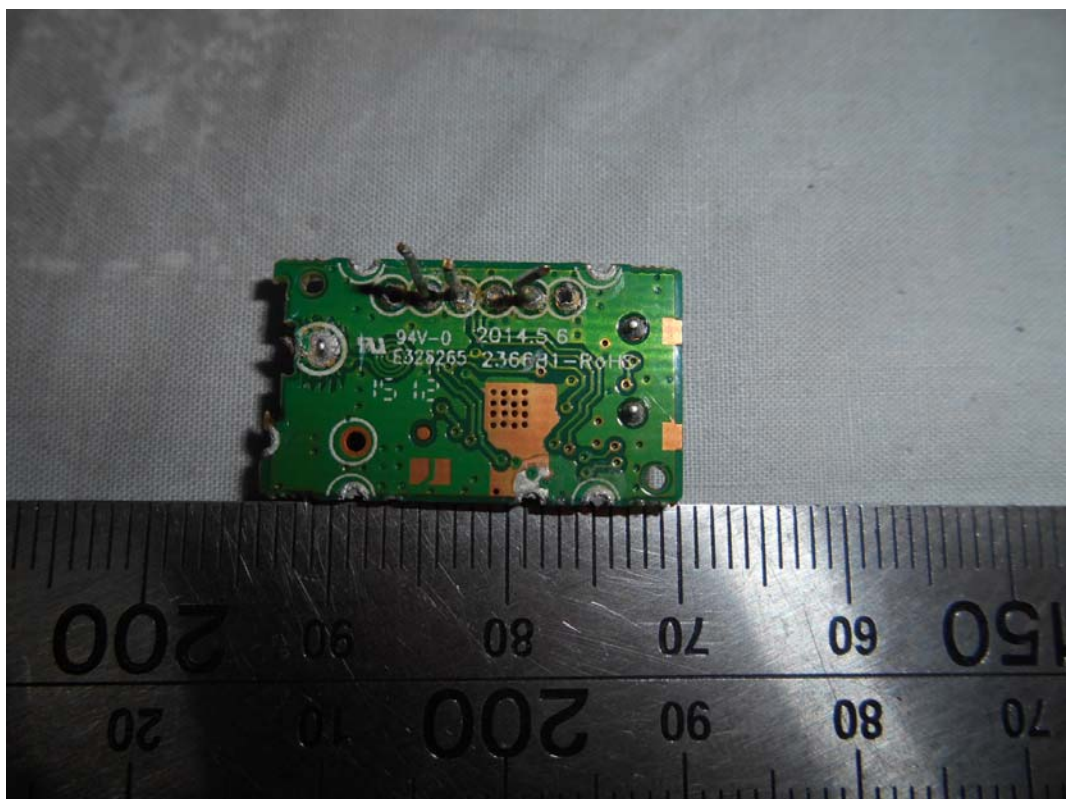
FIGURE 6  
LED LCD TV (M/N: LC-60N5100U)  
TUNER



*FIGURE 7*  
*LED LCD TV (M/N: LC-60N5100U)*  
*TUNER BOARD (COMPONENT SIDE)*

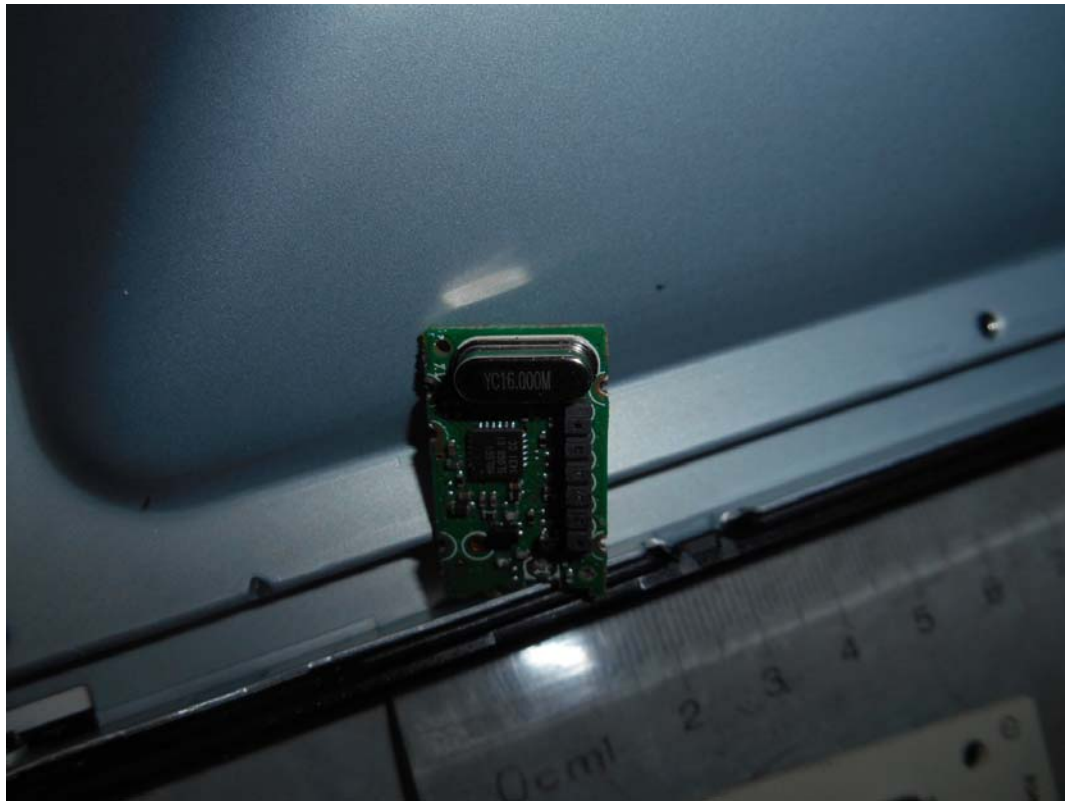


*FIGURE 8*  
*LED LCD TV (M/N: LC-60N5100U)*  
*TUNER BOARD (SOLDERED SIDE)*





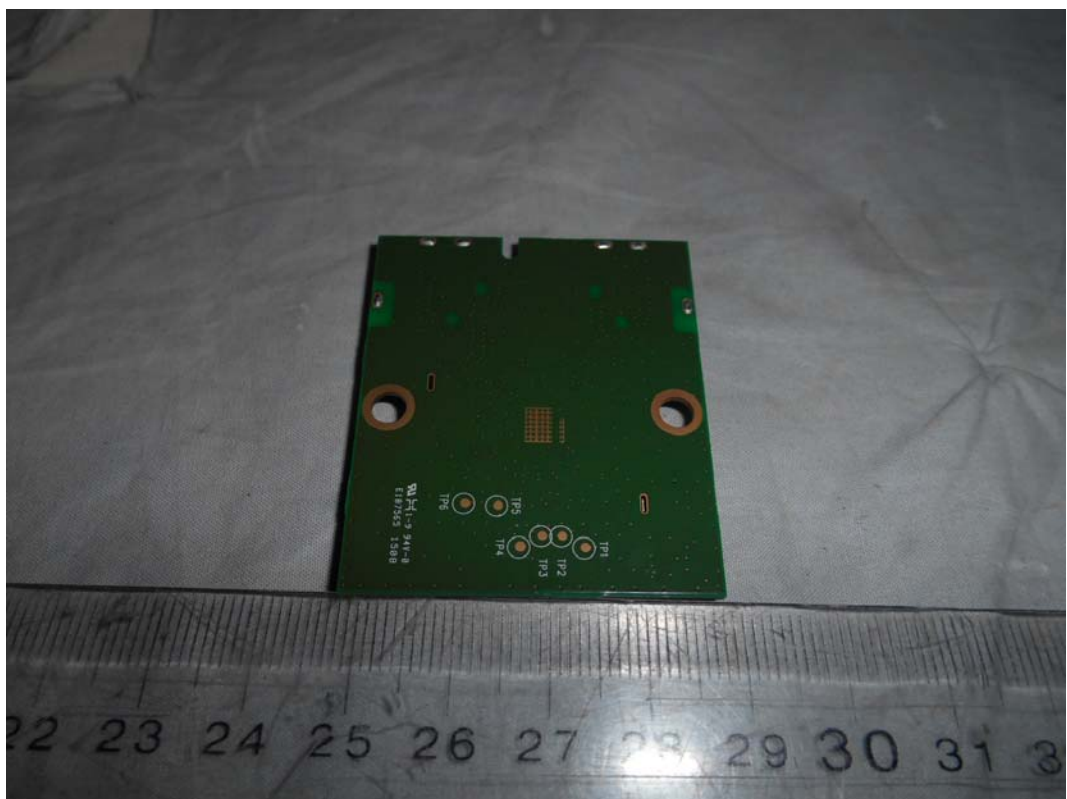
*FIGURE 9*  
*LED LCD TV (M/N: LC-60N5100U)*  
*TUNER CRYSTAL ON MAIN BOARD*



*FIGURE 10*  
*LED LCD TV (M/N: LC-60N5100U)*  
*RF BOARD (COMPONENT SIDE)*



*FIGURE 11*  
*LED LCD TV (M/N: LC-60N5100U)*  
*RF BOARD (SOLDERED SIDE)*



*FIGURE 12*  
*LED LCD TV (M/N: LC-60N5100U)*  
*RF BOARD LABEL*

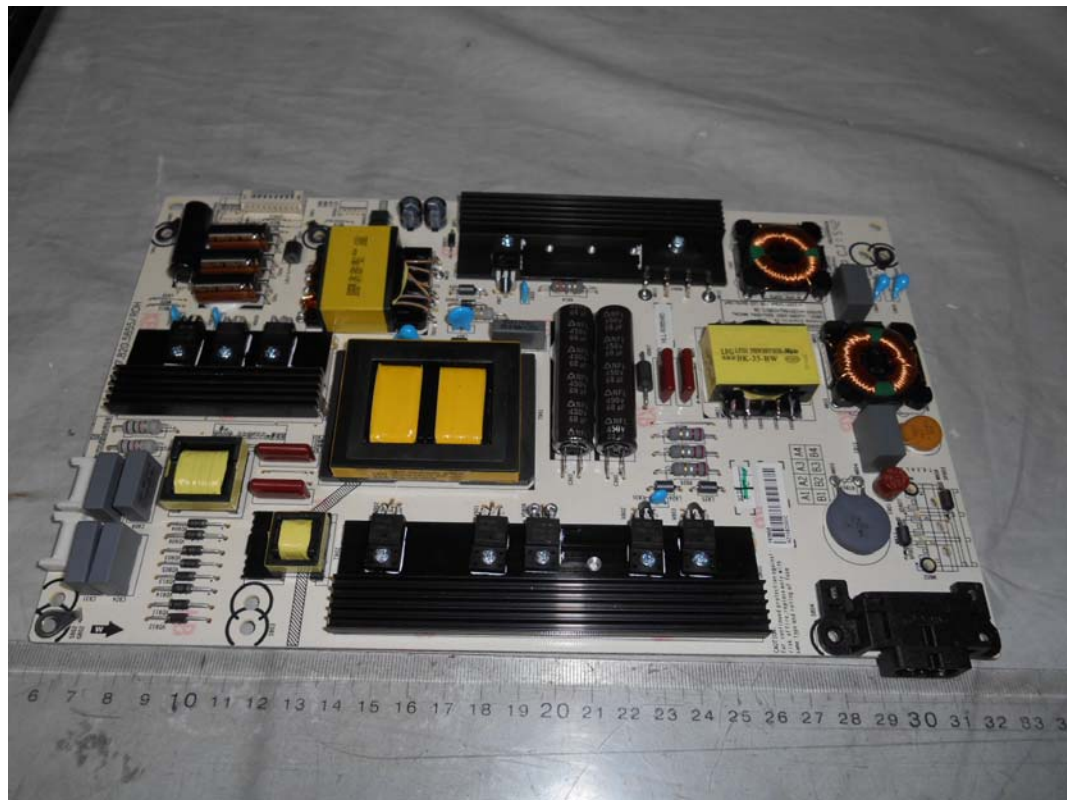


*FIGURE 13*  
*LED LCD TV (M/N: LC-60N5100U)*  
*RF BOARD COVER REMOVED*





*FIGURE 14*  
*LED LCD TV (M/N: LC-60N5100U)*  
*POWER BOARD (COMPONENT SIDE)*



*FIGURE 15*  
*LED LCD TV (M/N: LC-60N5100U)*  
*POWER BOARD (SOLDERED SIDE)*

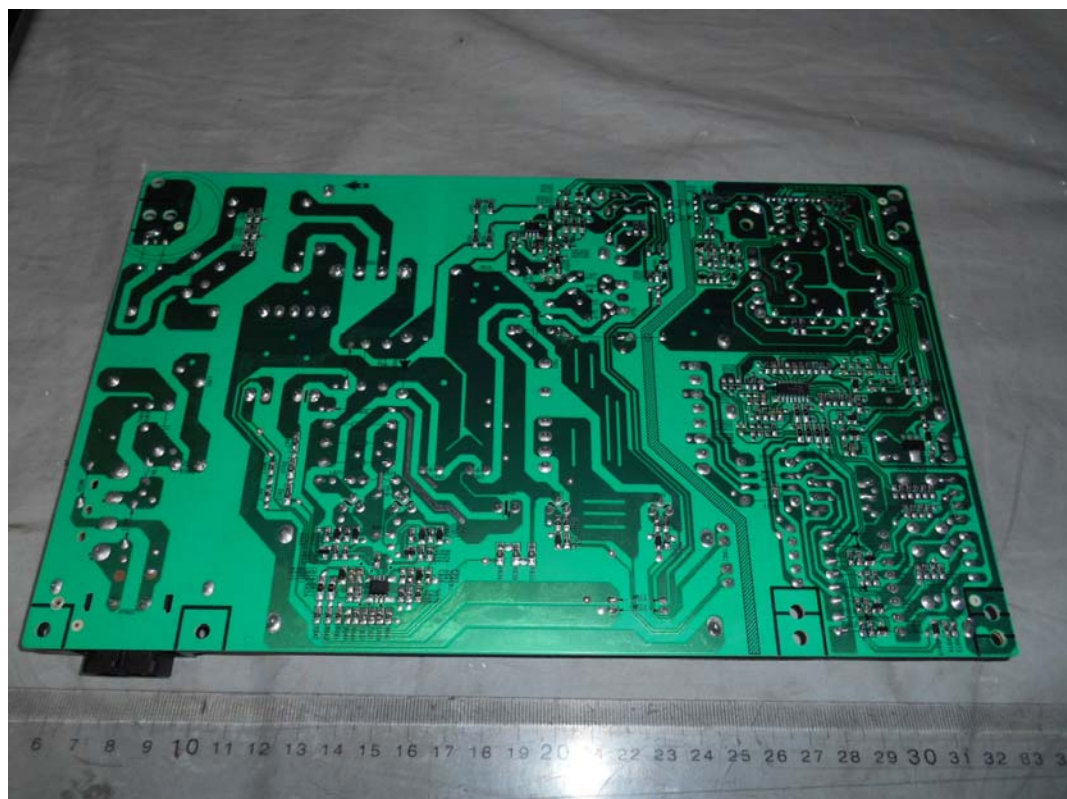


FIGURE 16  
LED LCD TV (M/N: LC-60N5100U)  
KEY BOARD (COMPONENT SIDE)

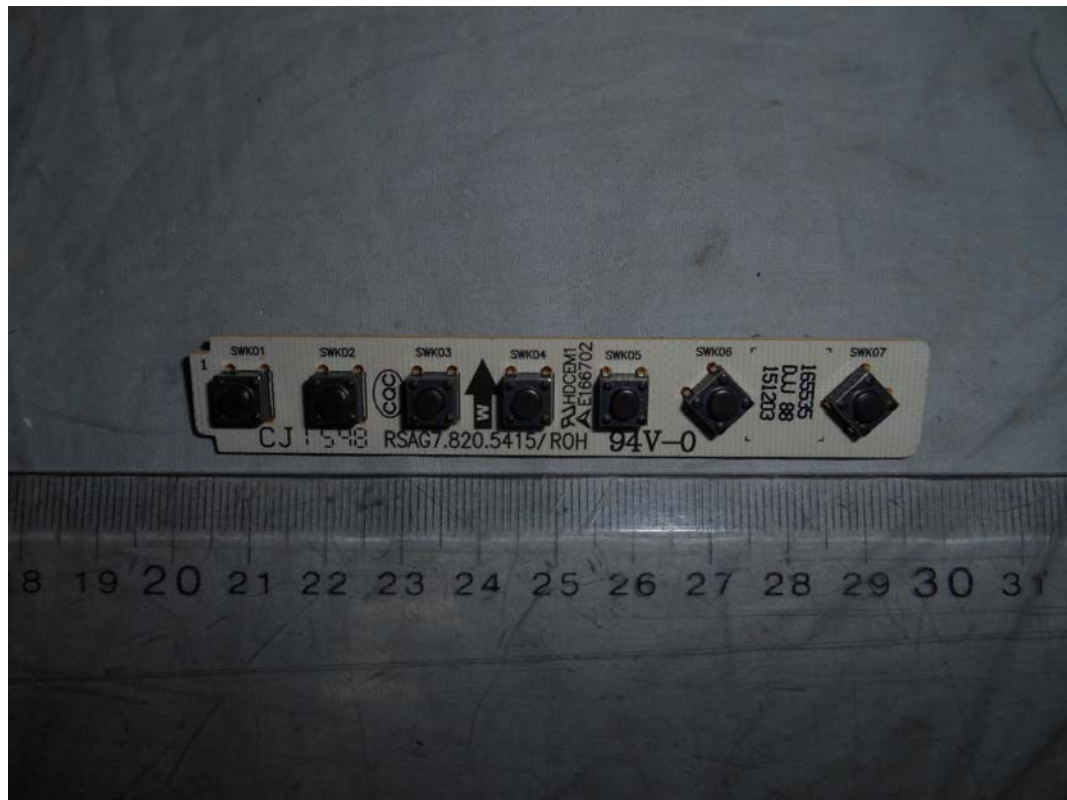
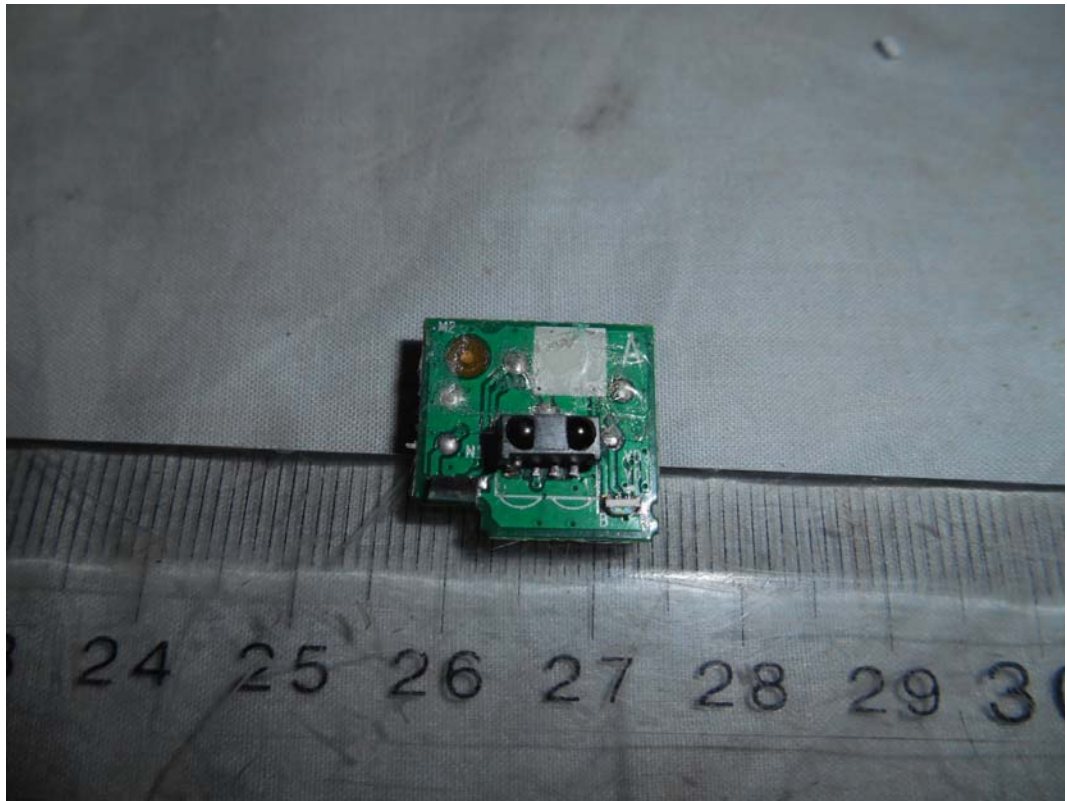


FIGURE 17  
LED LCD TV (M/N: LC-60N5100U)  
KEY BOARD (SOLDERED SIDE)





*FIGURE 18*  
*LED LCD TV (M/N: LC-60N5100U)*  
*IR BOARD (COMPONENT SIDE)*



*FIGURE 19*  
*LED LCD TV (M/N: LC-60N5100U)*  
*IR BOARD (SOLDERED SIDE)*

