

*FIGURE 1*  
*LED LCD TV (M/N: LC-65N9000U)*  
*COVER REMOVED*



FIGURE 2  
LED LCD TV (M/N: LC-65N9000U)  
LCD PANEL LABEL



*FIGURE 3*  
*LED LCD TV (M/N: LC-65N9000U)*  
*MAIN BOARD (COMPONENT SIDE)*



*FIGURE 4*  
*LED LCD TV (M/N: LC-65N9000U)*  
*MAIN BOARD (SOLDERED SIDE)*



FIGURE 5  
LED LCD TV (M/N: LC-65N9000U)  
CHIP#1 & CRYSTAL#1 ON MAIN BOARD

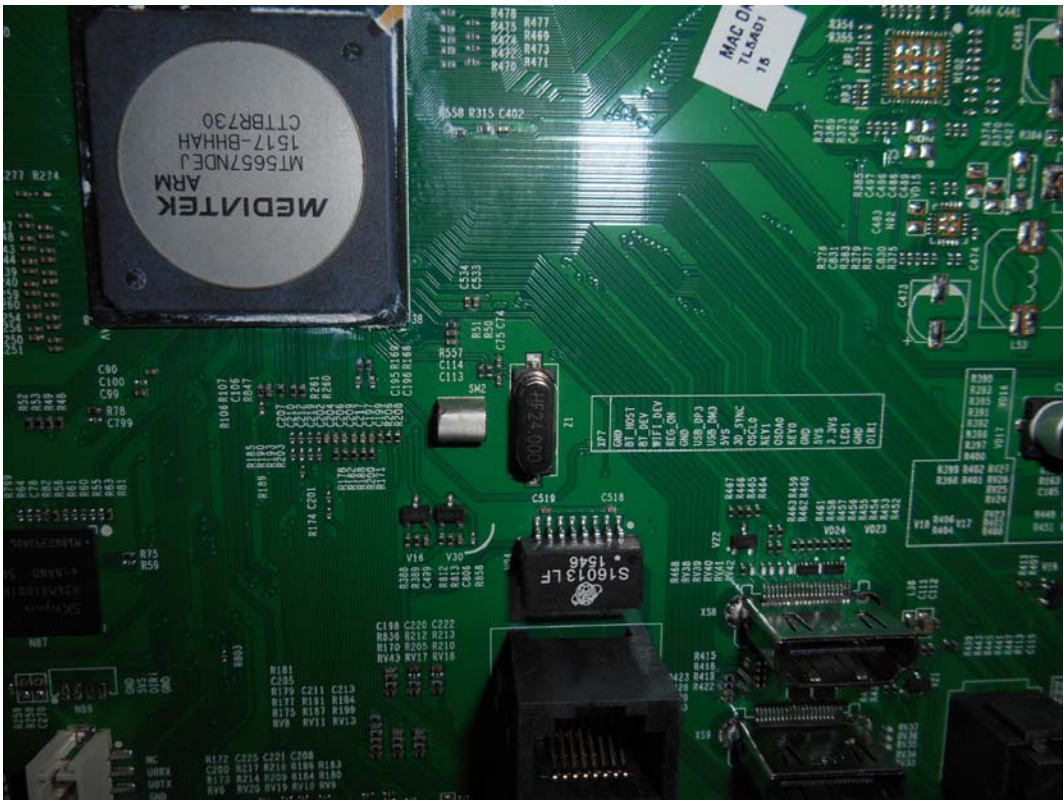
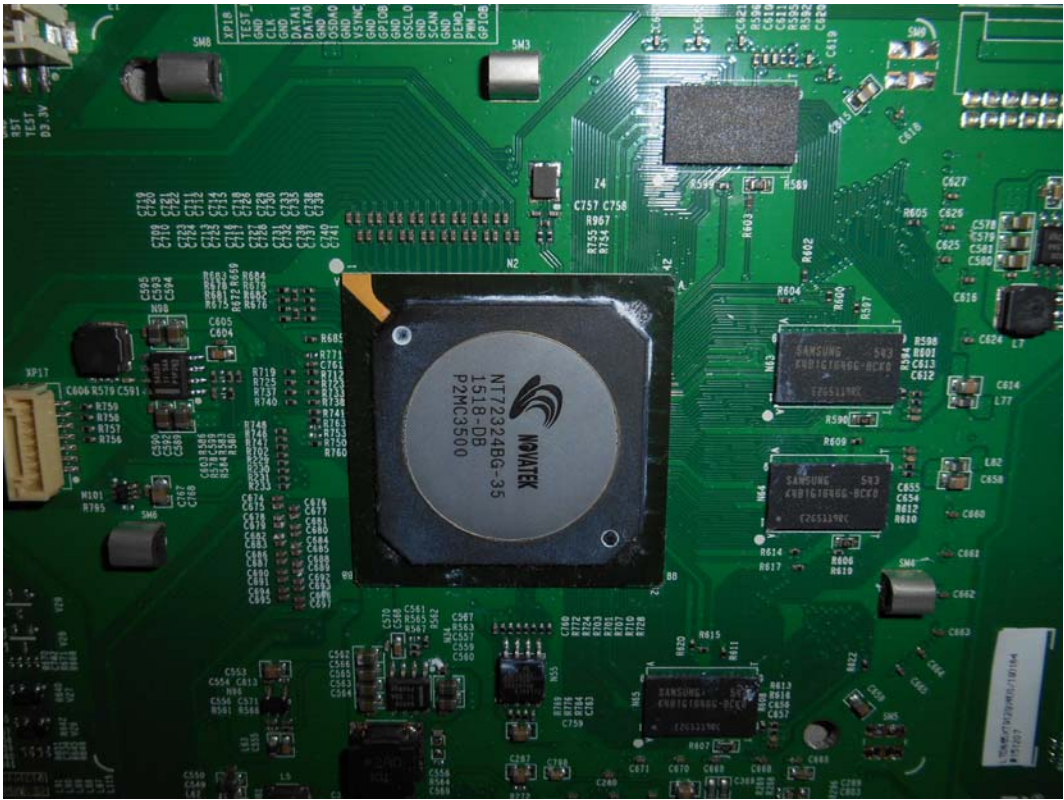


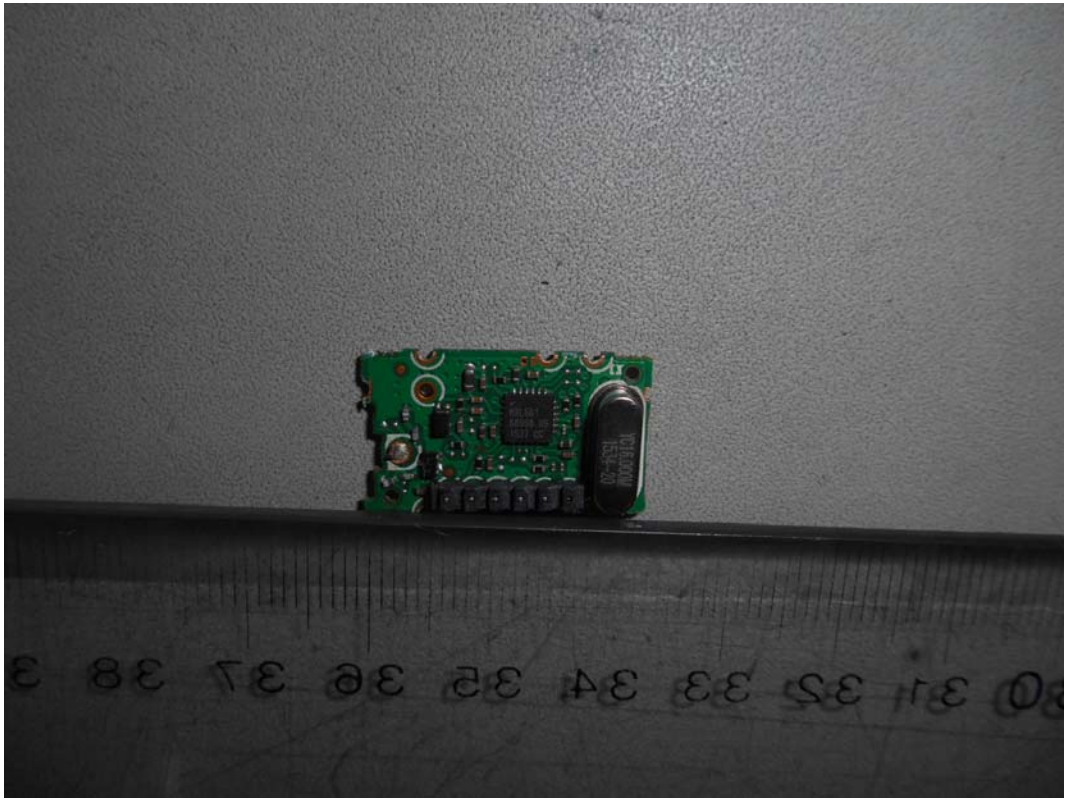
FIGURE 6  
LED LCD TV (M/N: LC-65N9000U)  
CHIP#2 & CRYSTAL#2 ON MAIN BOARD



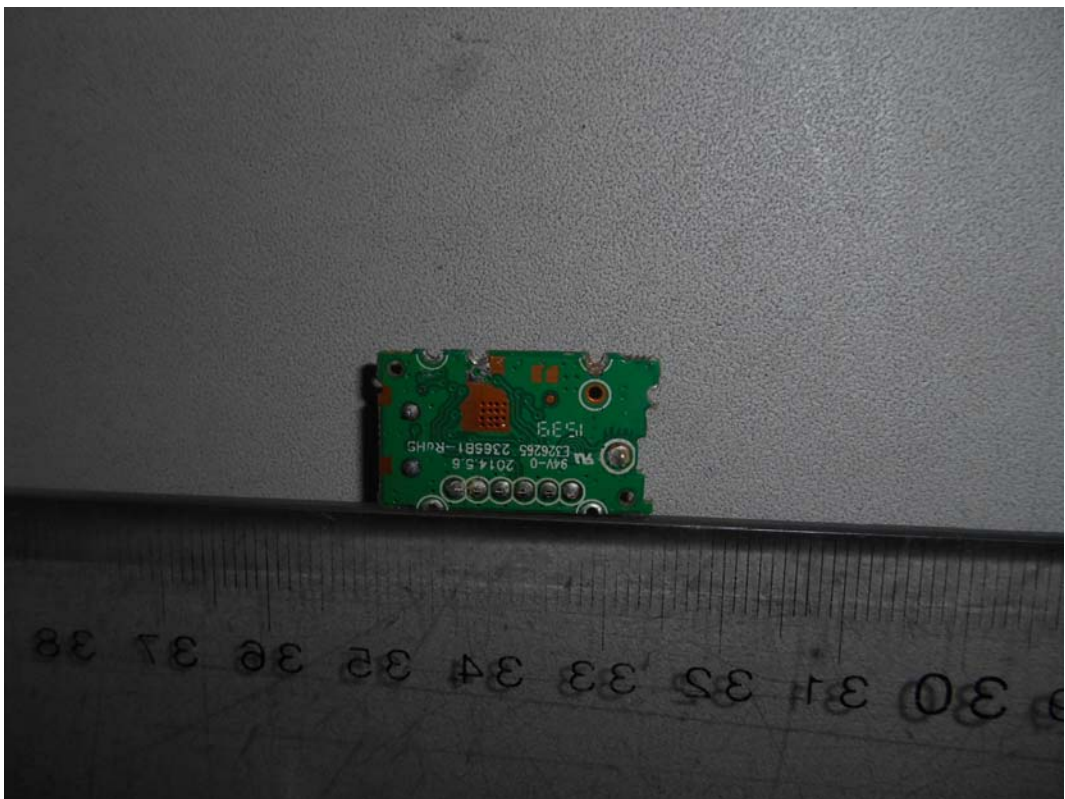
*FIGURE 7*  
*LED LCD TV (M/N: LC-65N9000U)*  
*TUNER*



*FIGURE 8*  
*LED LCD TV (M/N: LC-65N9000U)*  
*TUNER BOARD (COMPONENT SIDE)*



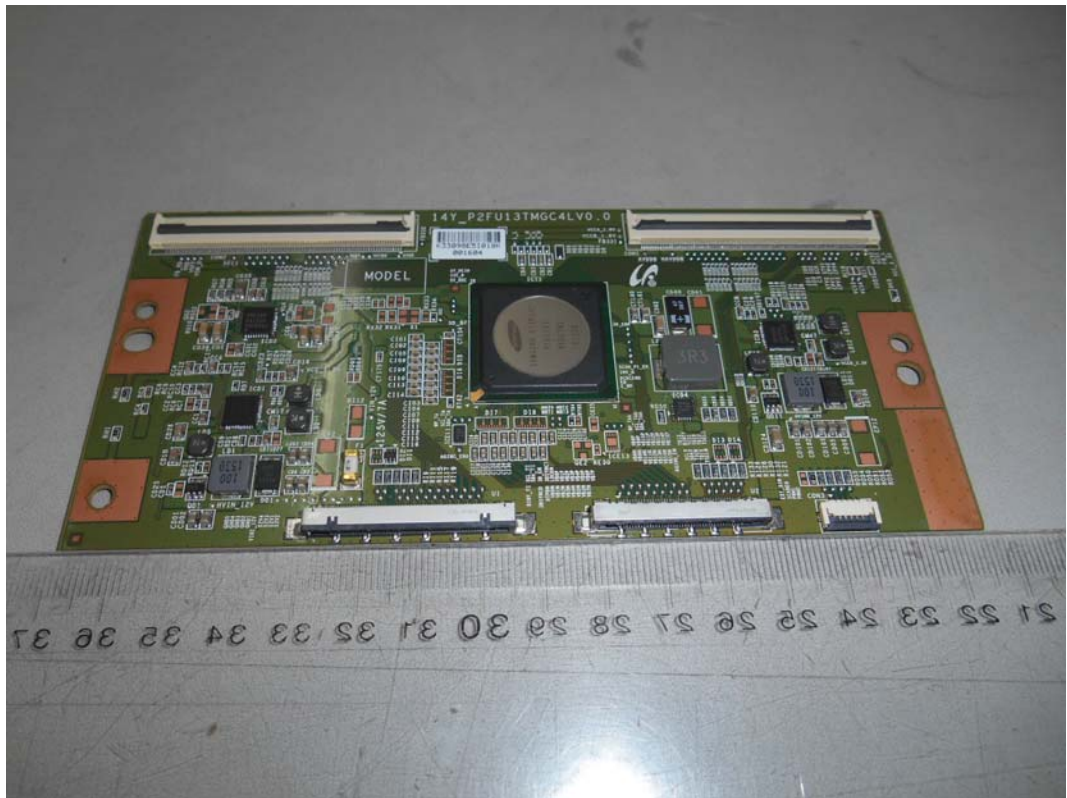
*FIGURE 9*  
*LED LCD TV (M/N: LC-65N9000U)*  
*TUNER BOARD (SOLDERED SIDE)*



*FIGURE 10*  
*LED LCD TV (M/N: LC-65N9000U)*  
*TUNER CRYSTAL ON MAIN BOARD*



*FIGURE 11*  
*LED LCD TV (M/N: LC-65N9000U)*  
*PANEL BOARD (COMPONENT SIDE)*



*FIGURE 12*  
*LED LCD TV (M/N: LC-65N9000U)*  
*PANEL BOARD (SOLDERED SIDE)*

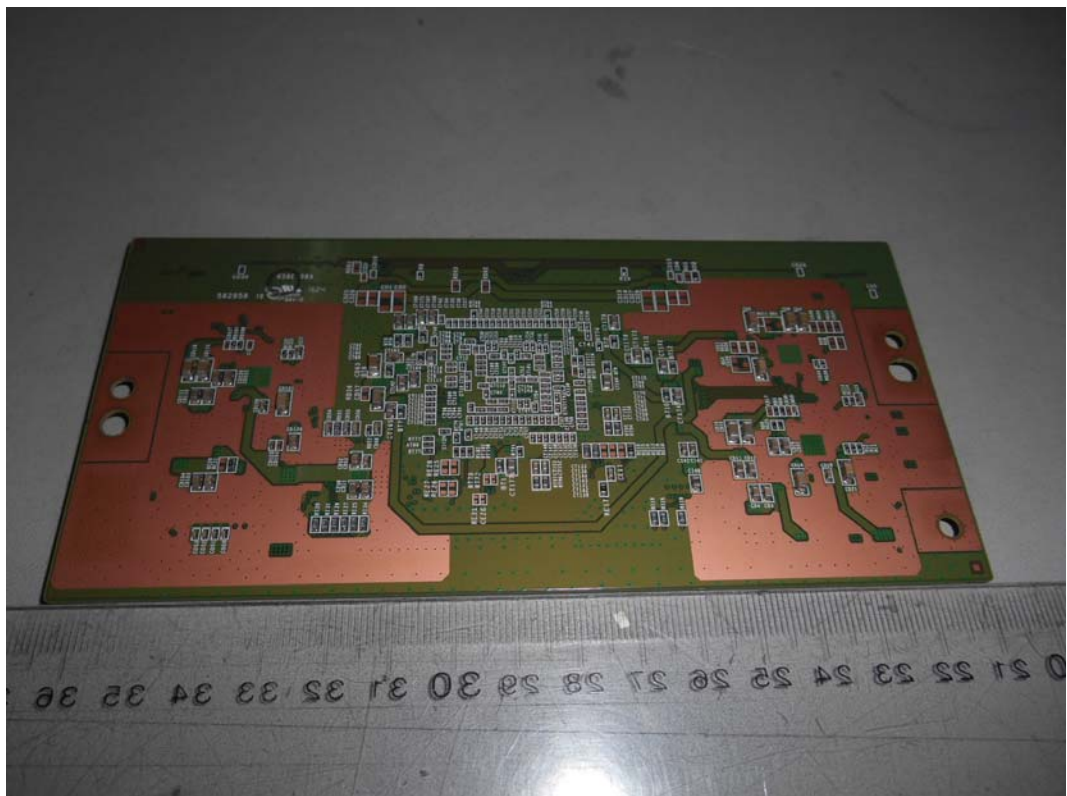




FIGURE 13  
LED LCD TV (M/N: LC-65N9000U)  
CHIP & CRYSTAL ON PANEL BOARD

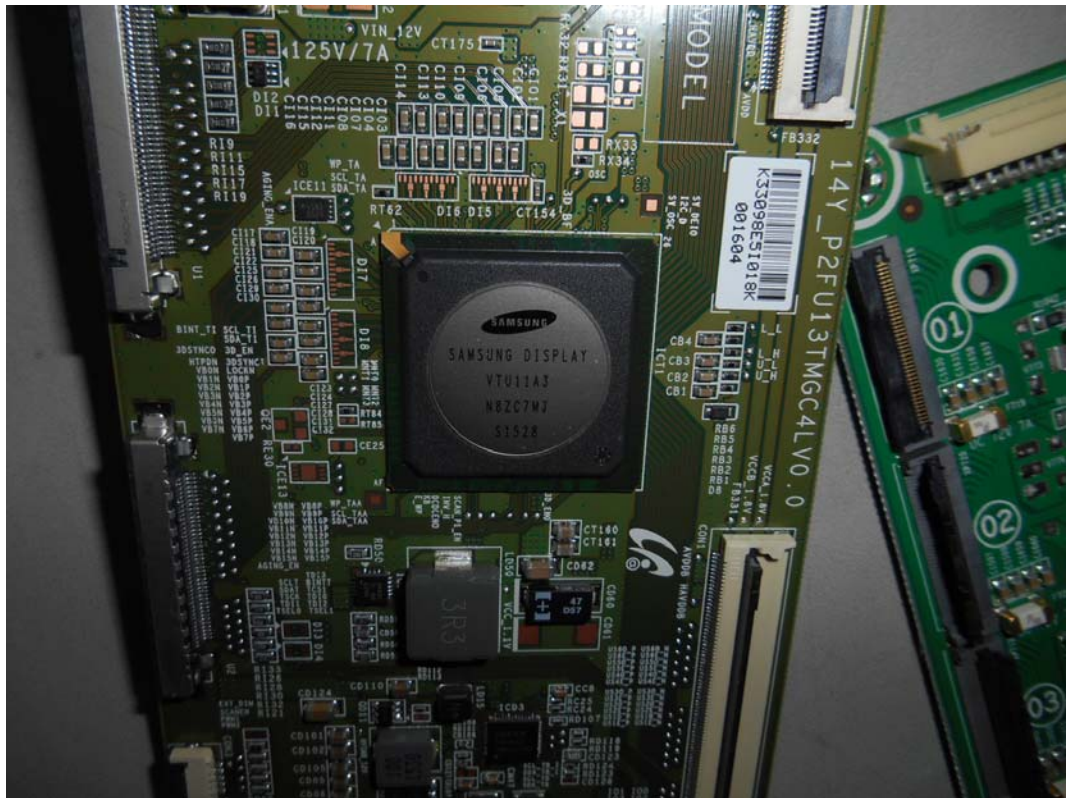


FIGURE 14  
LED LCD TV (M/N: LC-65N9000U)  
RF BOARD (COMPONENT SIDE)



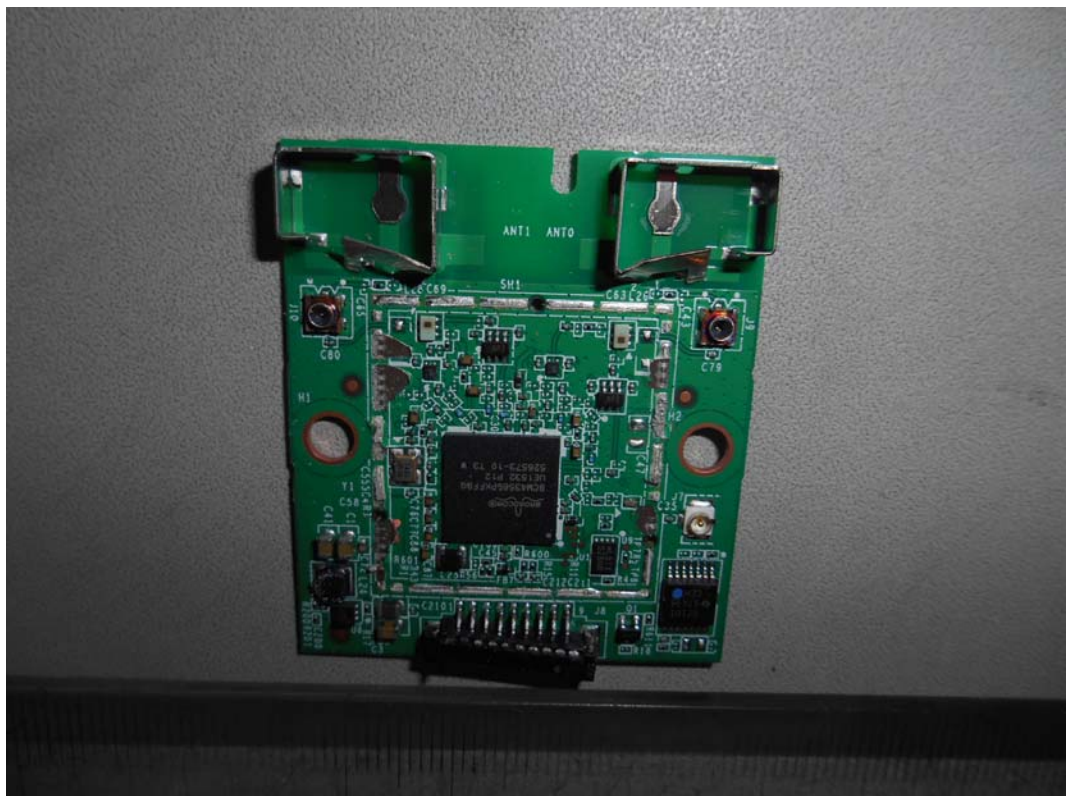
FIGURE 15  
LED LCD TV (M/N: LC-65N9000U)  
RF BOARD (SOLDERED SIDE)



FIGURE 16  
LED LCD TV (M/N: LC-65N9000U)  
RF BOARD LABEL



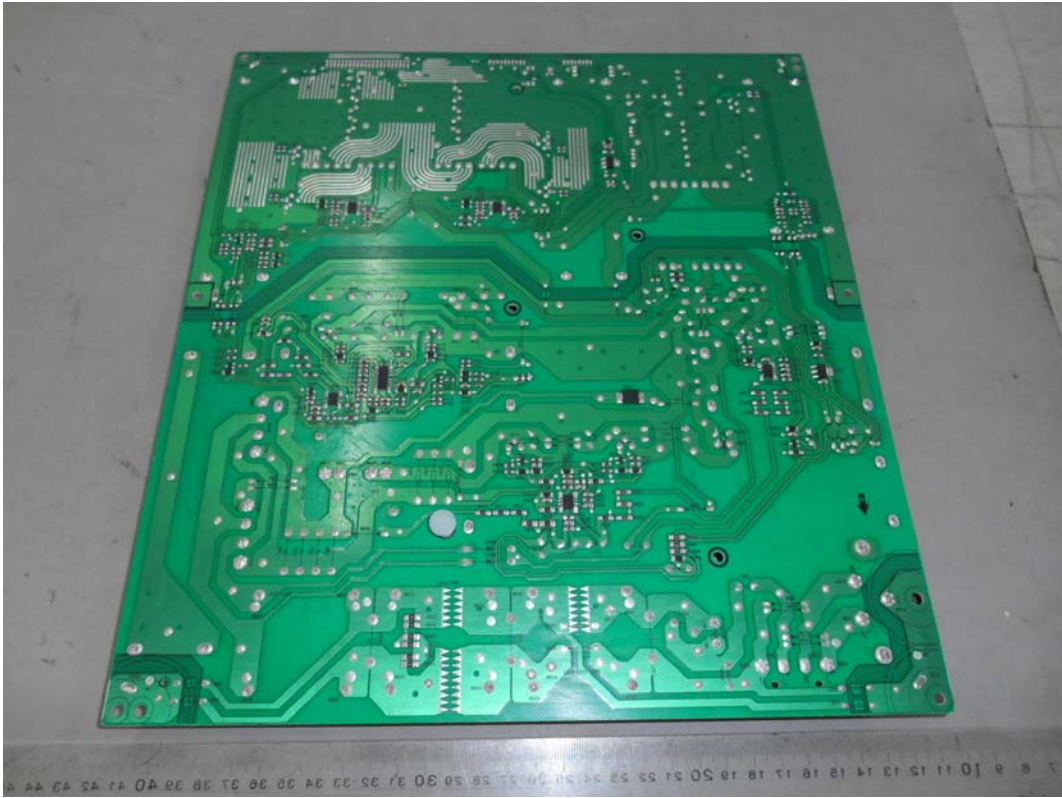
FIGURE 17  
LED LCD TV (M/N: LC-65N9000U)  
RF BOARD COVER REMOVED



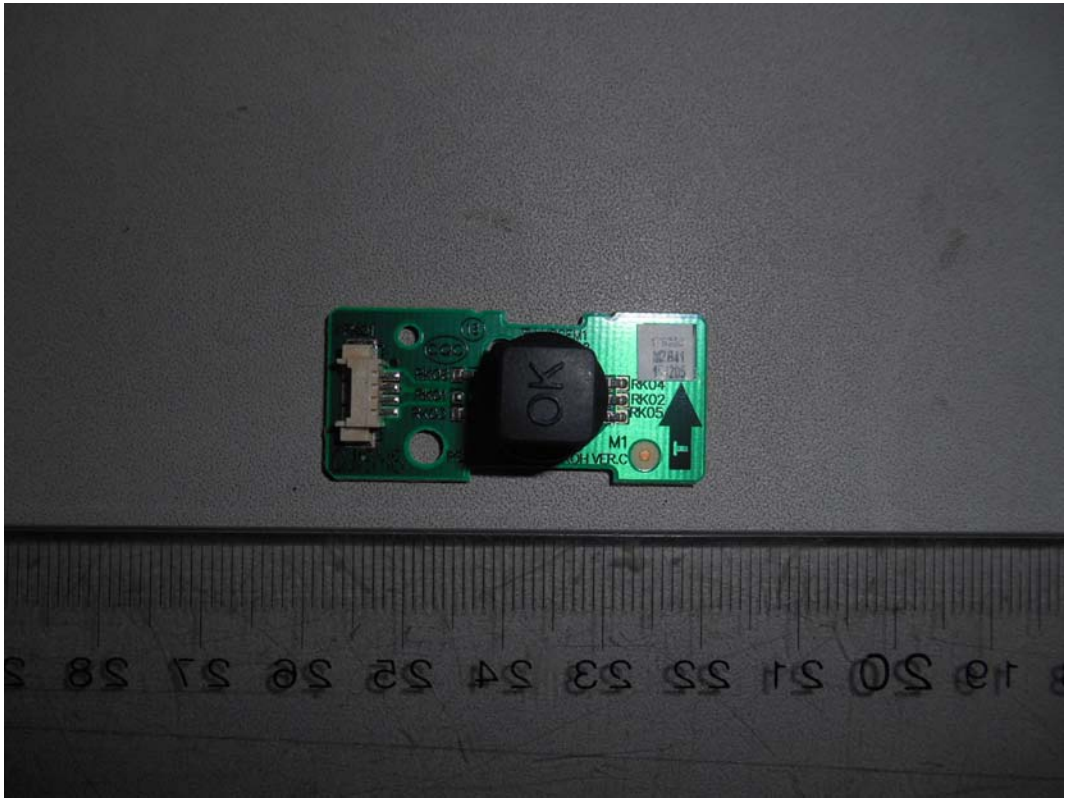
*FIGURE 18*  
*LED LCD TV (M/N: LC-65N9000U)*  
*POWER BOARD (COMPONENT SIDE)*



*FIGURE 19*  
*LED LCD TV (M/N: LC-65N9000U)*  
*POWER BOARD (SOLDERED SIDE)*



*FIGURE 20*  
*LED LCD TV (M/N: LC-65N9000U)*  
*KEY BOARD (COMPONENT SIDE)*



*FIGURE 21*  
*LED LCD TV (M/N: LC-65N9000U)*  
*KEY BOARD (SOLDERED SIDE)*



FIGURE 22  
LED LCD TV (M/N: LC-65N9000U)  
IR BOARD (COMPONENT SIDE)

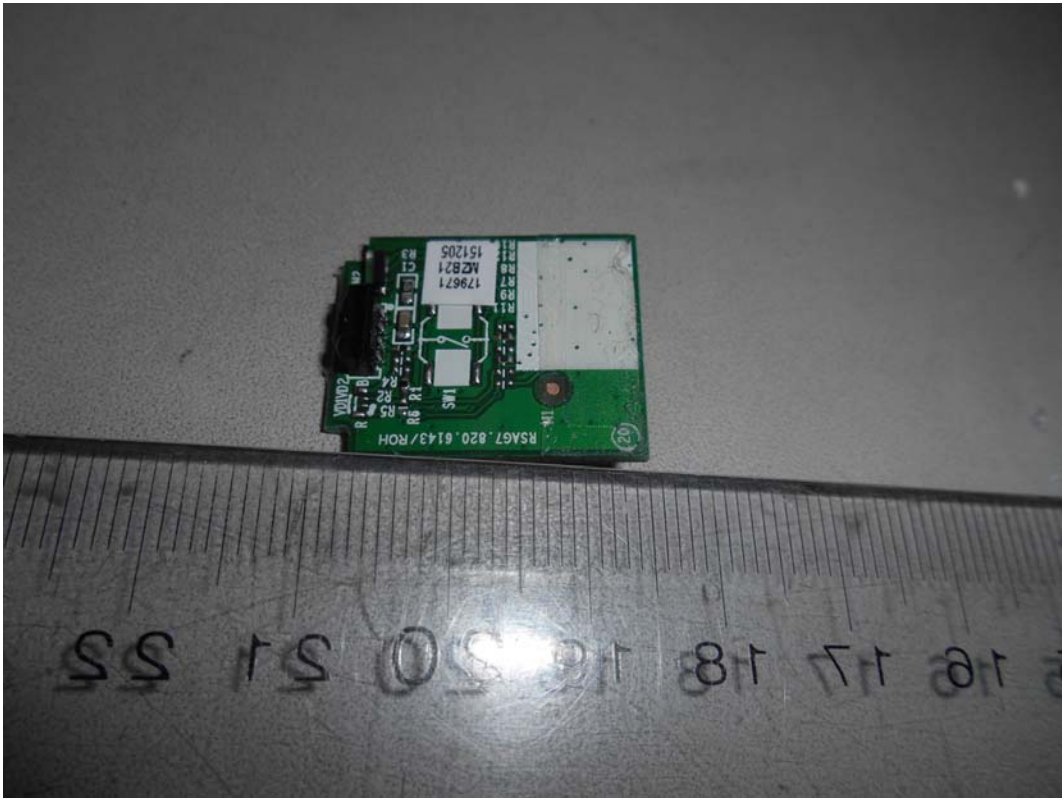


FIGURE 23  
LED LCD TV (M/N: LC-65N9000U)  
IR BOARD (SOLDERED SIDE)

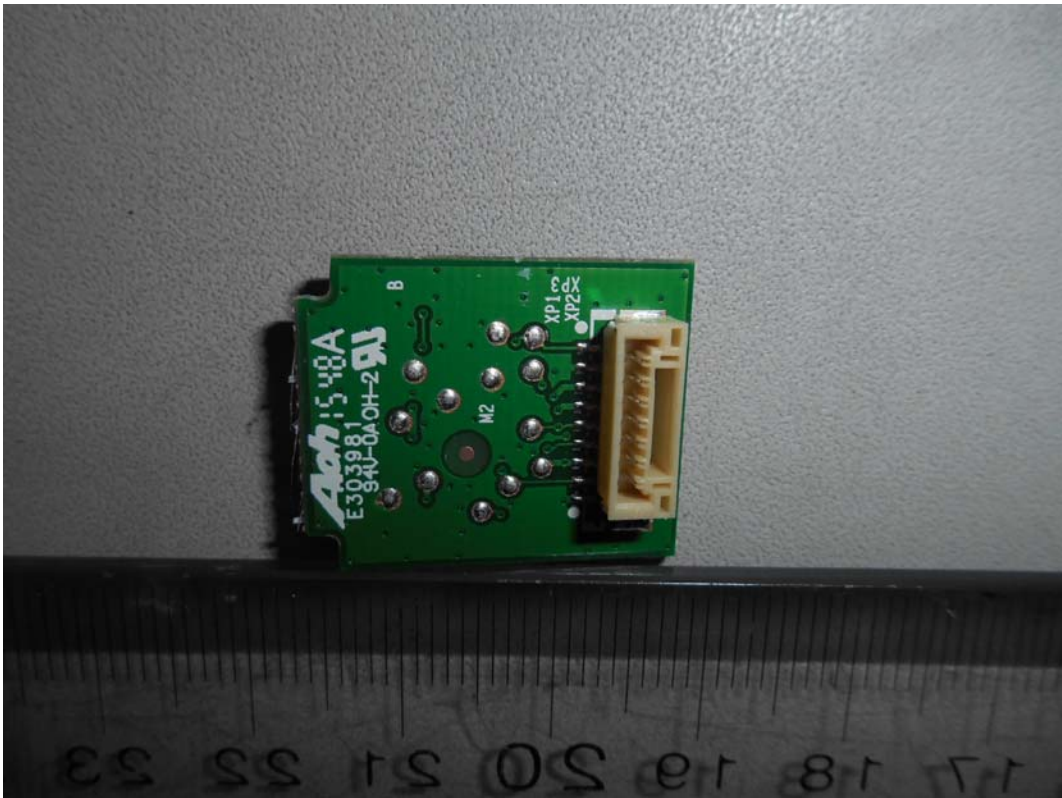


FIGURE 24  
LED LCD TV (M/N: LC-65N9000U)  
MAIN BOARD#1 (COMPONENT SIDE)



FIGURE 25  
LED LCD TV (M/N: LC-65N9000U)  
MAIN BOARD#1 (SOLDERED SIDE)

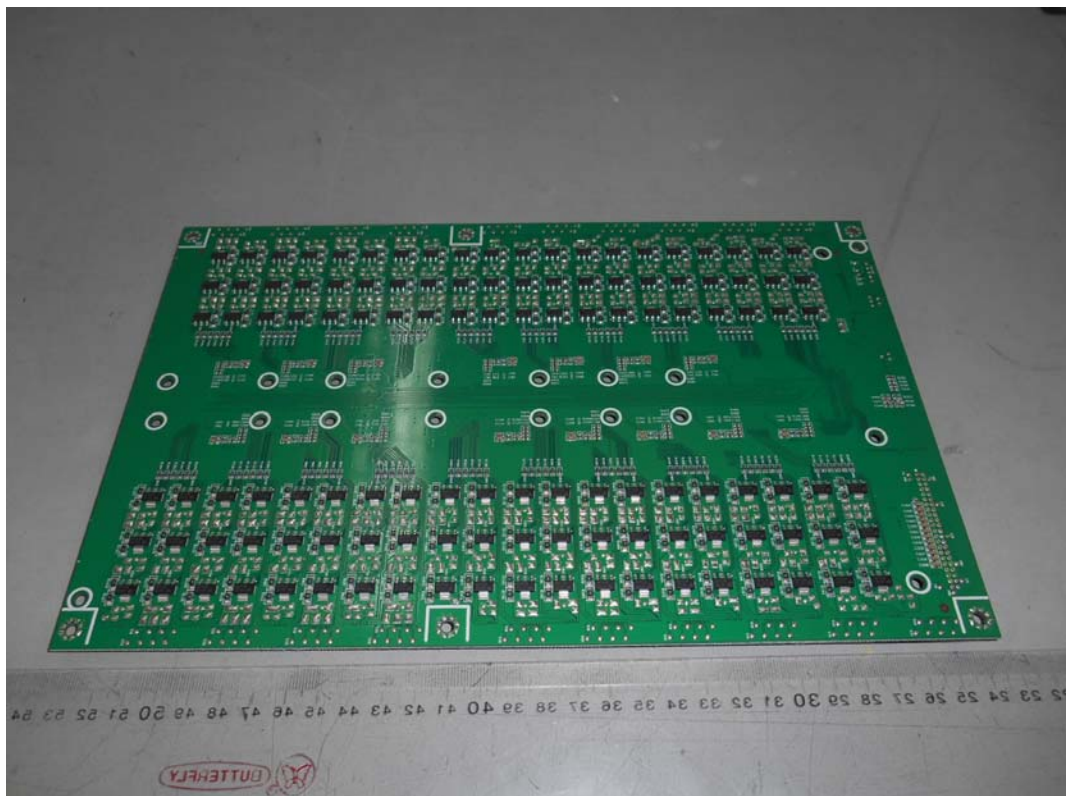


FIGURE 26  
LED LCD TV (M/N: LC-65N9000U)  
CHIP & CRYSTAL ON MAIN BOARD#1

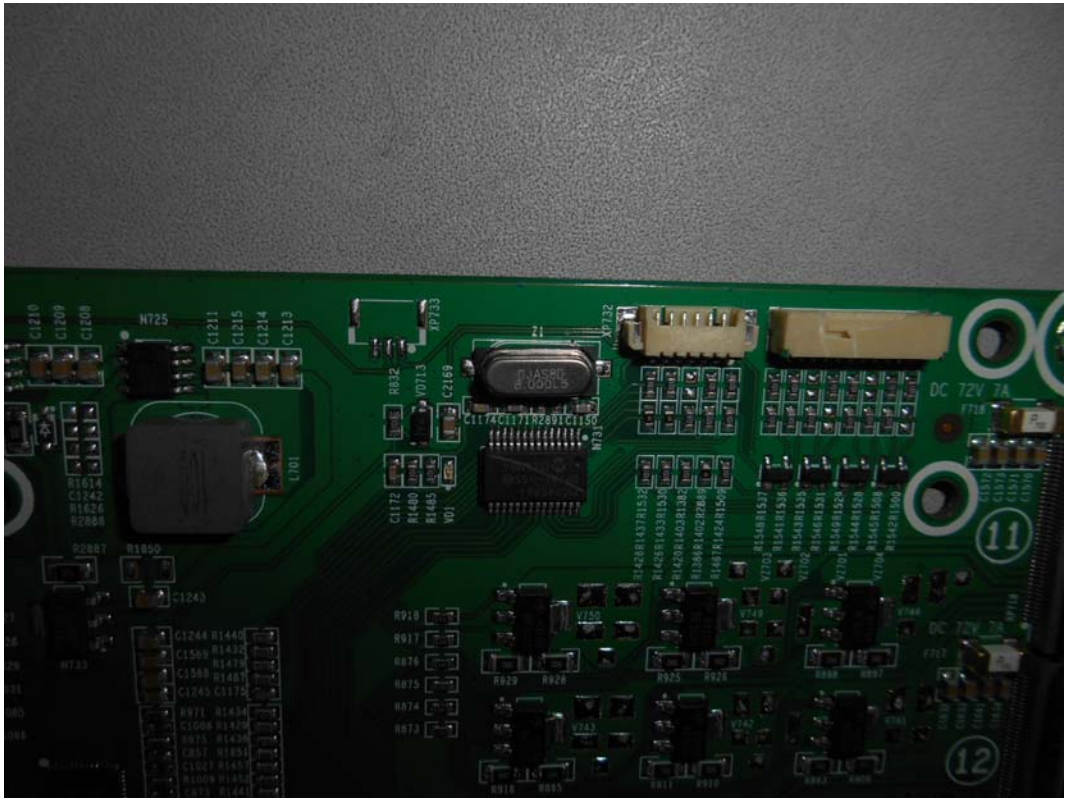


FIGURE 27  
LED LCD TV (M/N: LC-65N9000U)  
DEBUG#1

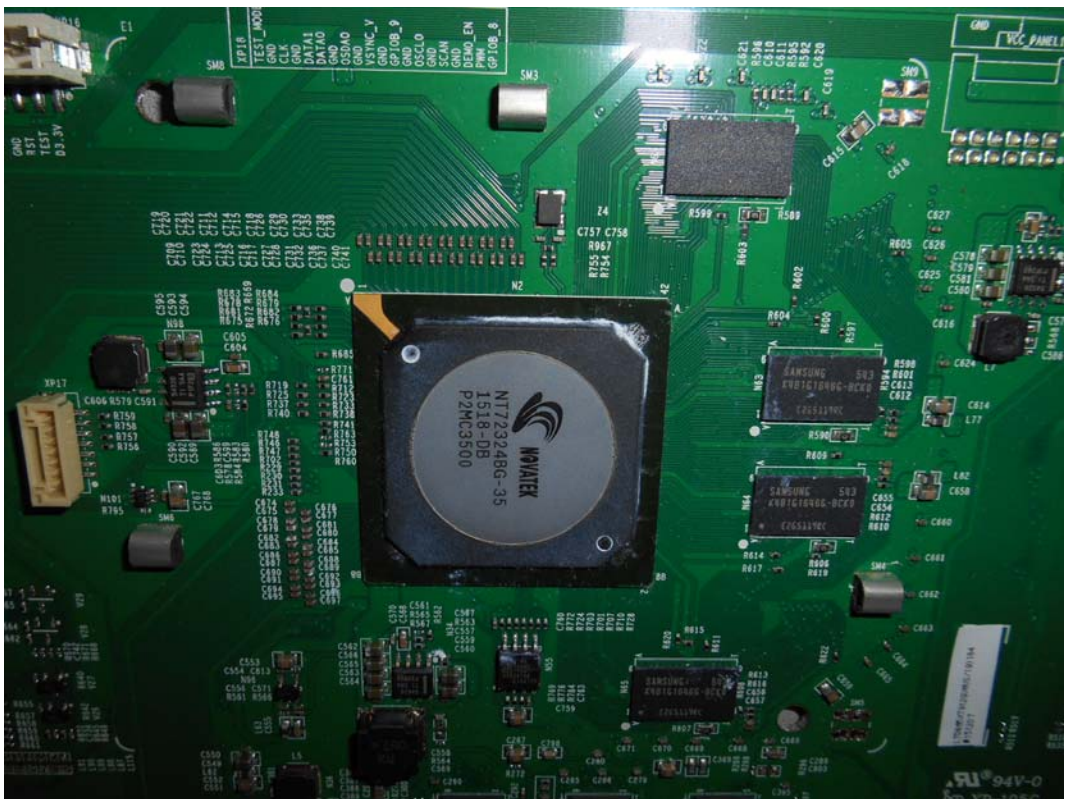




FIGURE 28  
LED LCD TV (M/N: LC-65N9000U)  
DEBUG#2



FIGURE 29  
LED LCD TV (M/N: LC-65N9000U)  
DEBUG#3

