

*FIGURE 1*  
*LED LCD TV (M/N: LC-50N6000U)*  
*COVER REMOVED*



*FIGURE 2*  
*LED LCD TV (M/N: LC-50N6000U)*  
*LCD PANEL LABEL*



*FIGURE 3*  
*LED LCD TV (M/N: LC-50N6000U)*  
*MAIN BOARD (COMPONENT SIDE)*



*FIGURE 4*  
*LED LCD TV (M/N: LC-50N6000U)*  
*MAIN BOARD (SOLDERED SIDE)*

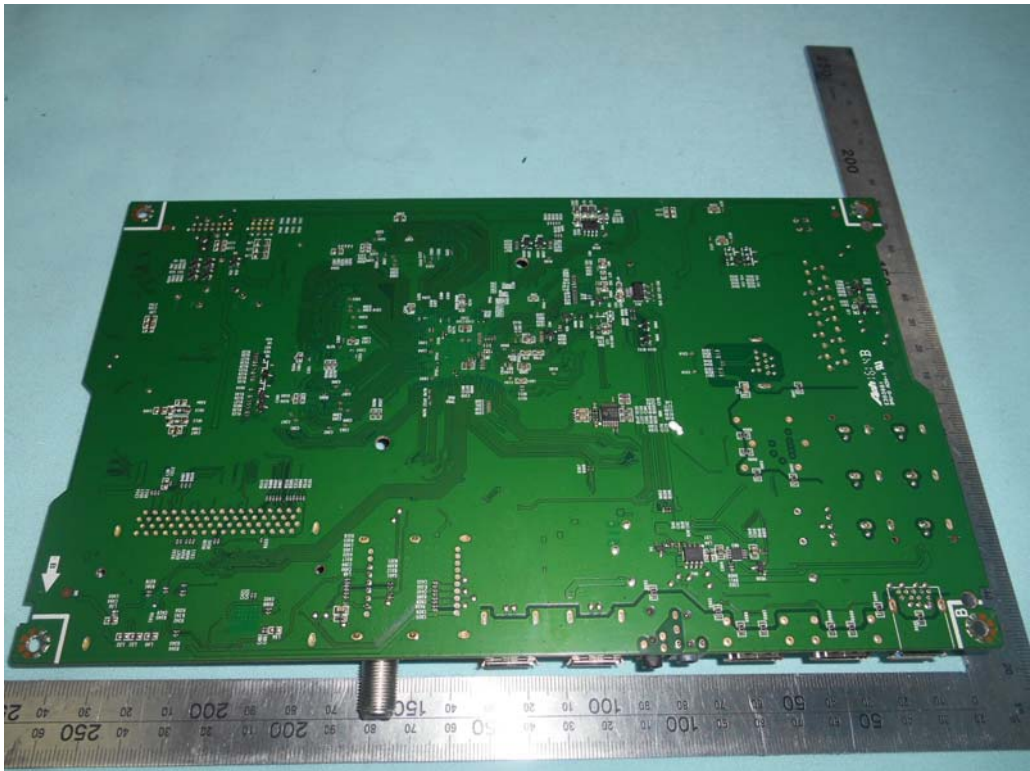


FIGURE 5  
LED LCD TV (M/N: LC-50N6000U)  
CHIP & CRYSTAL ON MAIN BOARD



FIGURE 6  
LED LCD TV (M/N: LC-50N6000U)  
TUNER



FIGURE 7  
LED LCD TV (M/N: LC-50N6000U)  
TUNER BOARD (COMPONENT SIDE)

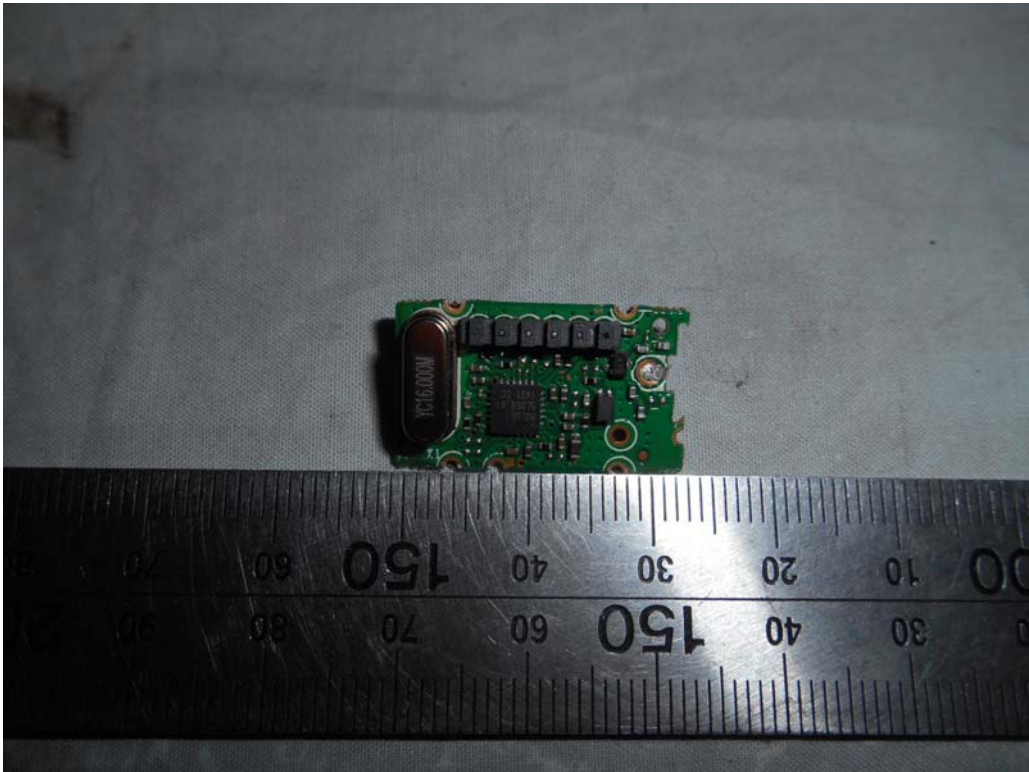


FIGURE 8  
LED LCD TV (M/N: LC-50N6000U)  
TUNER BOARD (SOLDERED SIDE)

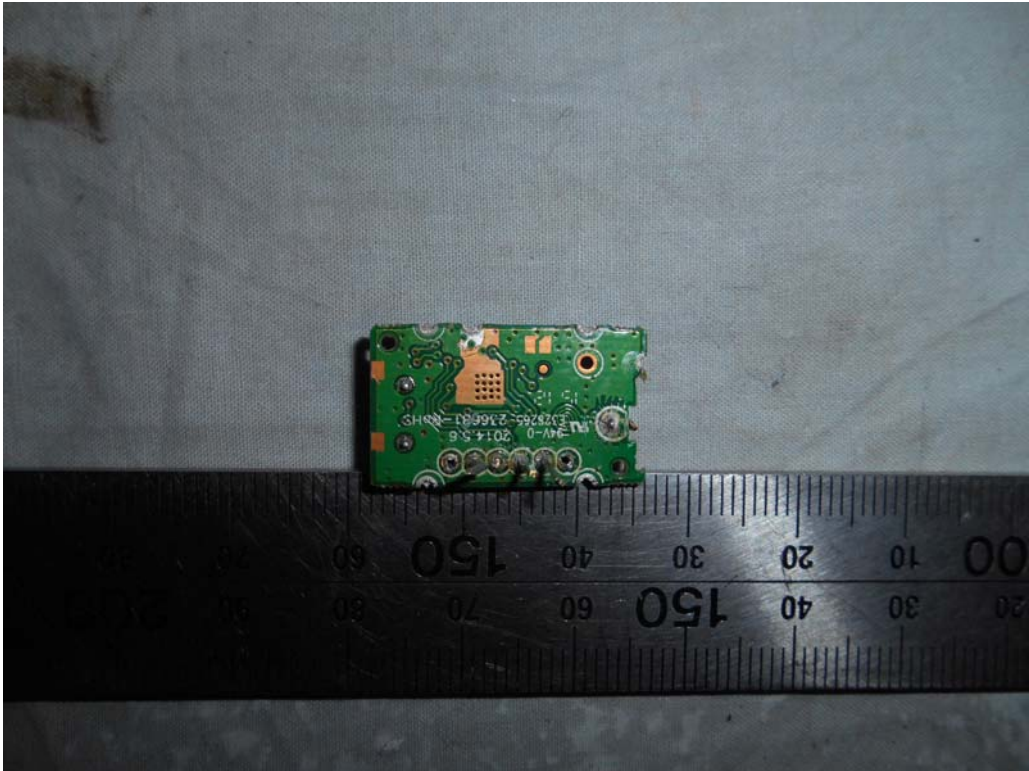


FIGURE 9  
LED LCD TV (M/N: LC-50N6000U)  
TUNER CRYSTAL ON MAIN BOARD



FIGURE 10  
LED LCD TV (M/N: LC-50N6000U)  
PANEL BOARD (COMPONENT SIDE)



FIGURE 11  
LED LCD TV (M/N: LC-50N6000U)  
PANEL BOARD (SOLDERED SIDE)

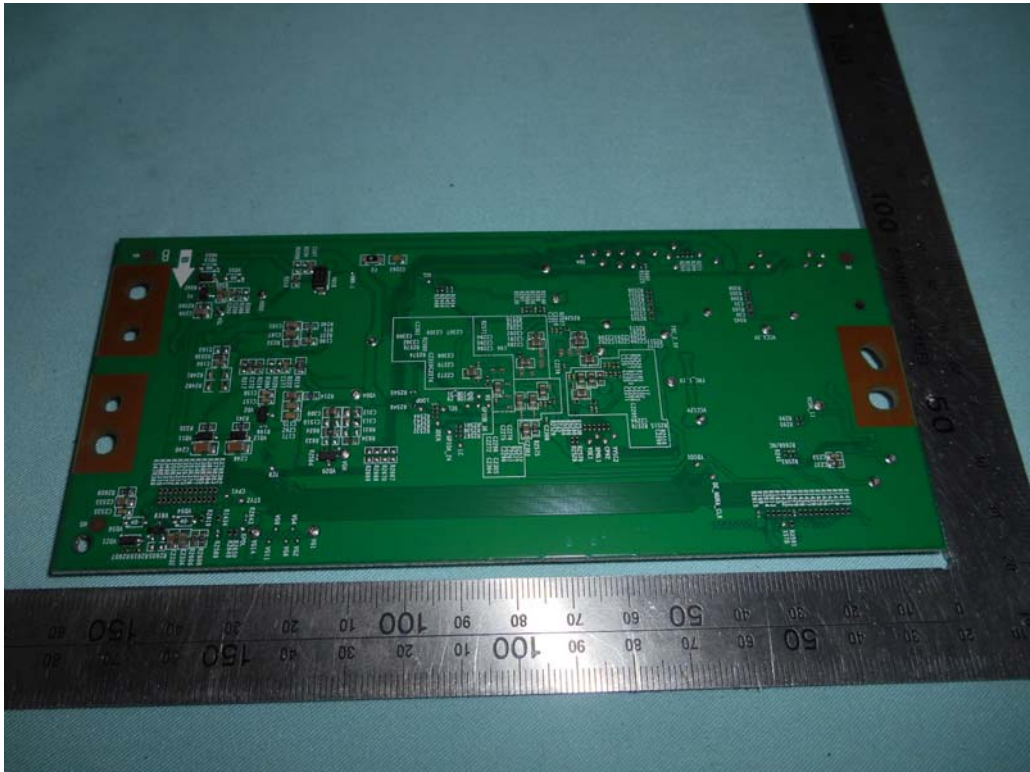


FIGURE 12  
LED LCD TV (M/N: LC-50N6000U)  
CHIP & CRYSTAL ON PANEL BOARD

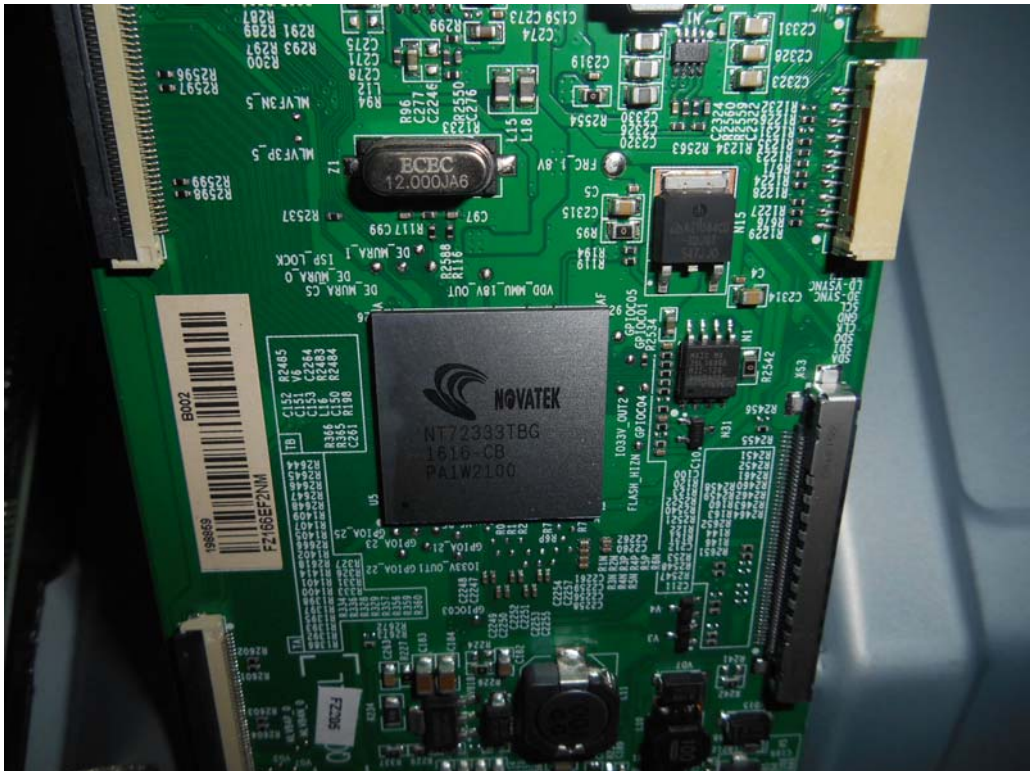


FIGURE 13  
LED LCD TV (M/N: LC-50N6000U)  
RF BOARD (COMPONENT SIDE)



FIGURE 14  
LED LCD TV (M/N: LC-50N6000U)  
RF BOARD (SOLDERED SIDE)

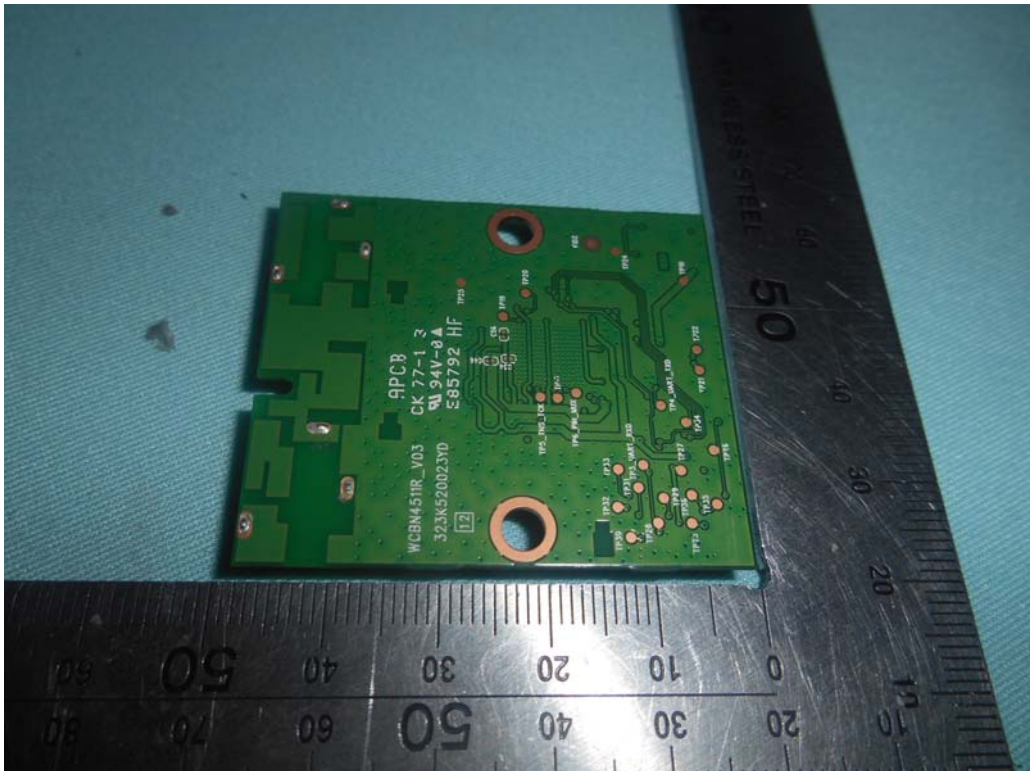


FIGURE 15  
LED LCD TV (M/N: LC-50N6000U)  
CHIP & CRYSTAL ON RF BOARD

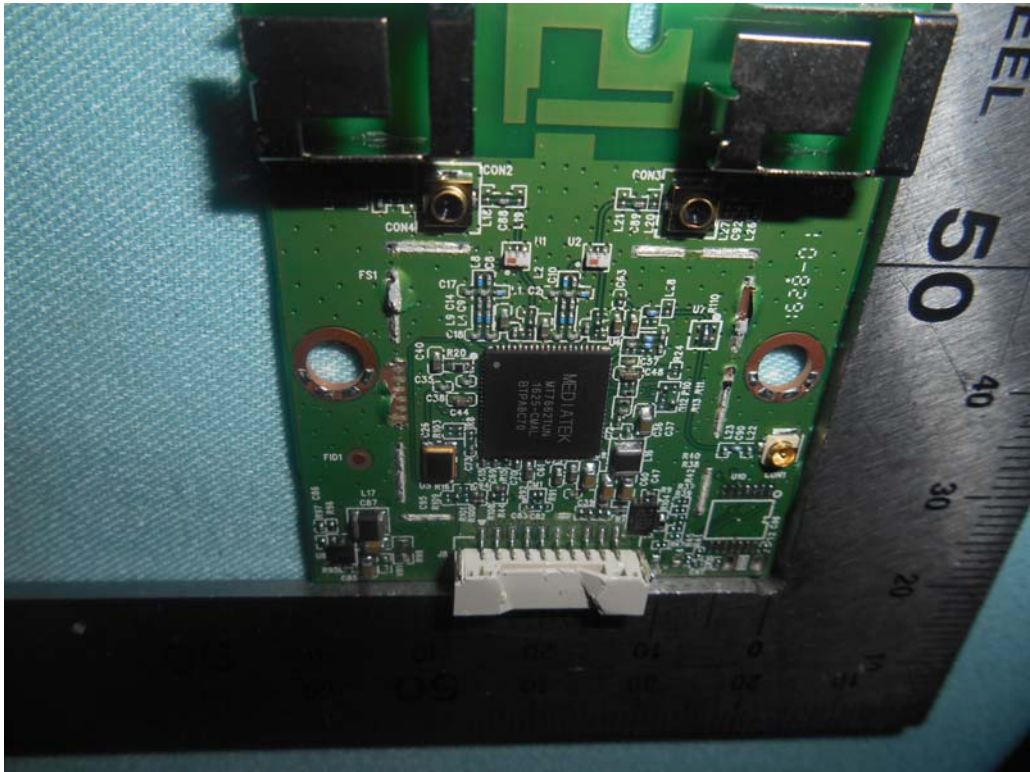


FIGURE 16  
LED LCD TV (M/N: LC-50N6000U)  
RF BOARD LABEL





*FIGURE 17*  
*LED LCD TV (M/N: LC-50N6000U)*  
*POWER BOARD (COMPONENT SIDE)*



*FIGURE 18*  
*LED LCD TV (M/N: LC-50N6000U)*  
*POWER BOARD (SOLDERED SIDE)*

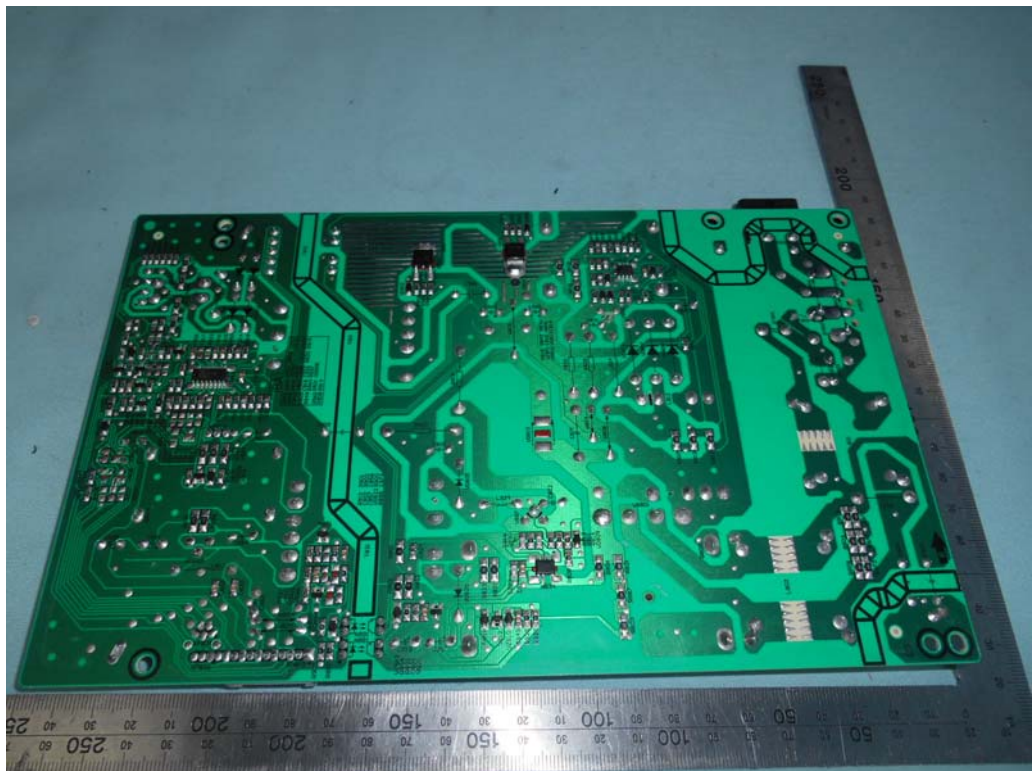


FIGURE 19  
LED LCD TV (M/N: LC-50N6000U)  
KEY BOARD (COMPONENT SIDE)

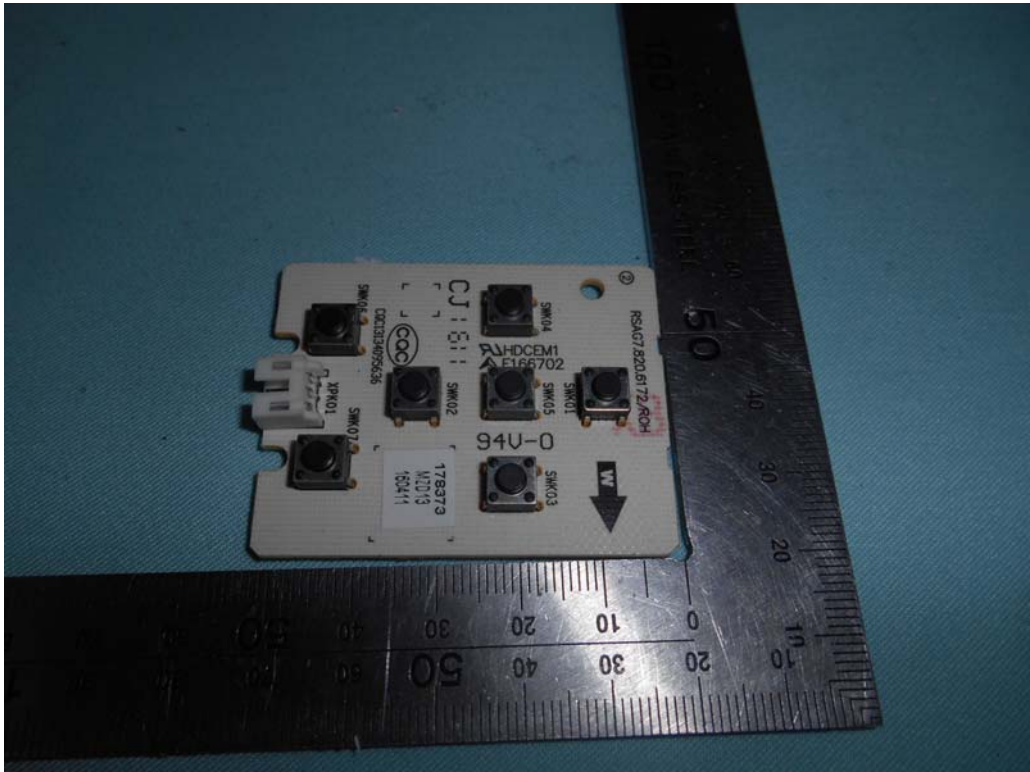
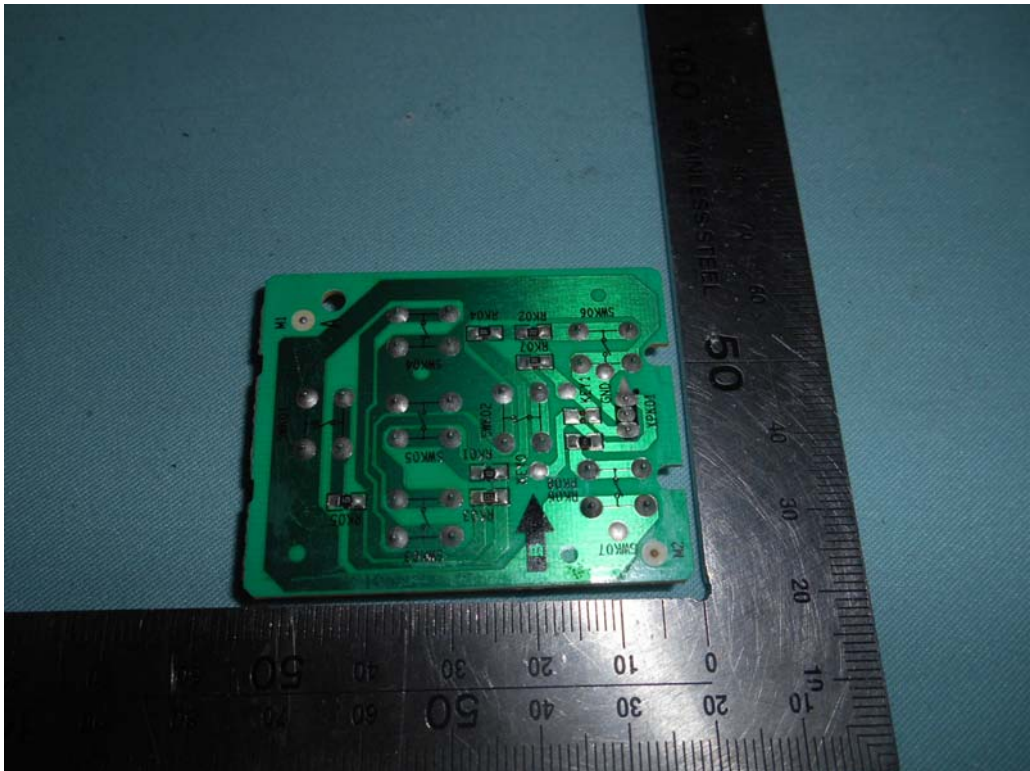
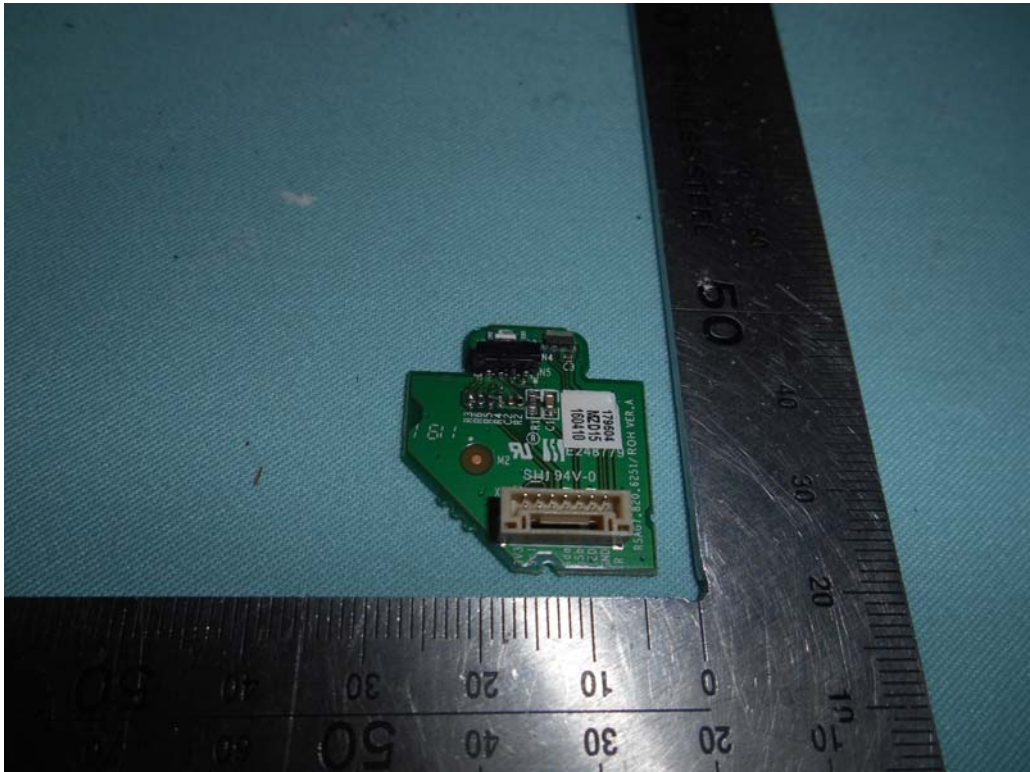


FIGURE 20  
LED LCD TV (M/N: LC-50N6000U)  
KEY BOARD (SOLDERED SIDE)



*FIGURE 21*  
*LED LCD TV (M/N: LC-50N6000U)*  
*IR BOARD (COMPONENT SIDE)*



*FIGURE 22*  
*LED LCD TV (M/N: LC-50N6000U)*  
*IR BOARD (SOLDERED SIDE)*

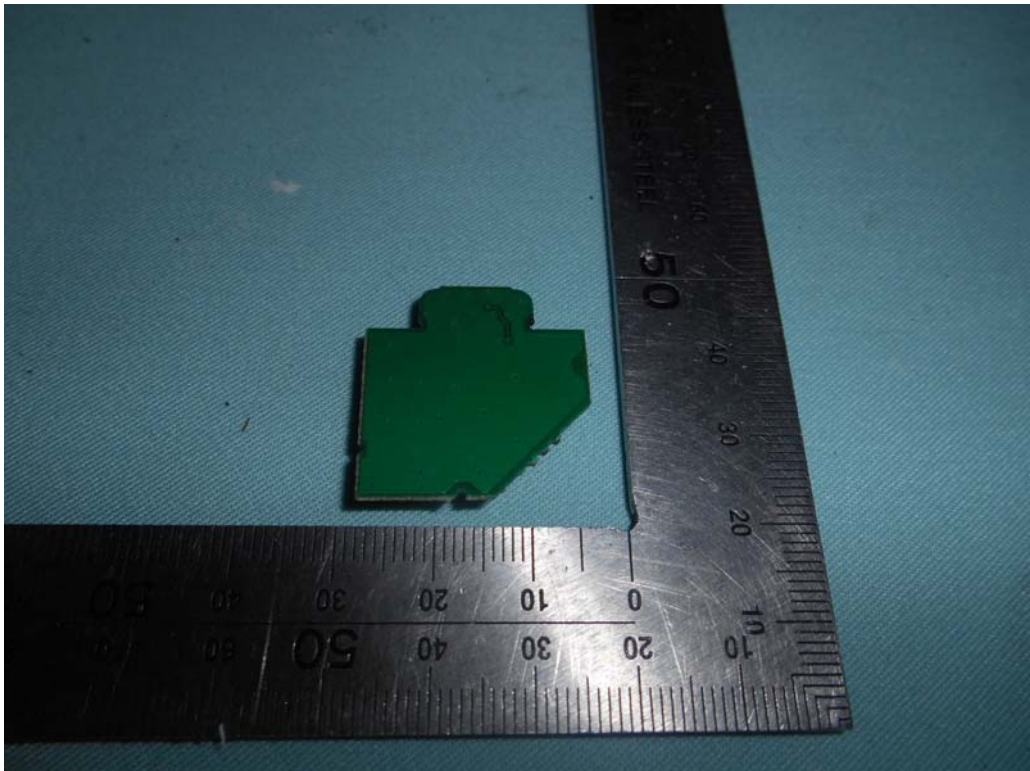


FIGURE 23  
LED LCD TV (M/N: LC-50N6000U)  
DEBUG#1

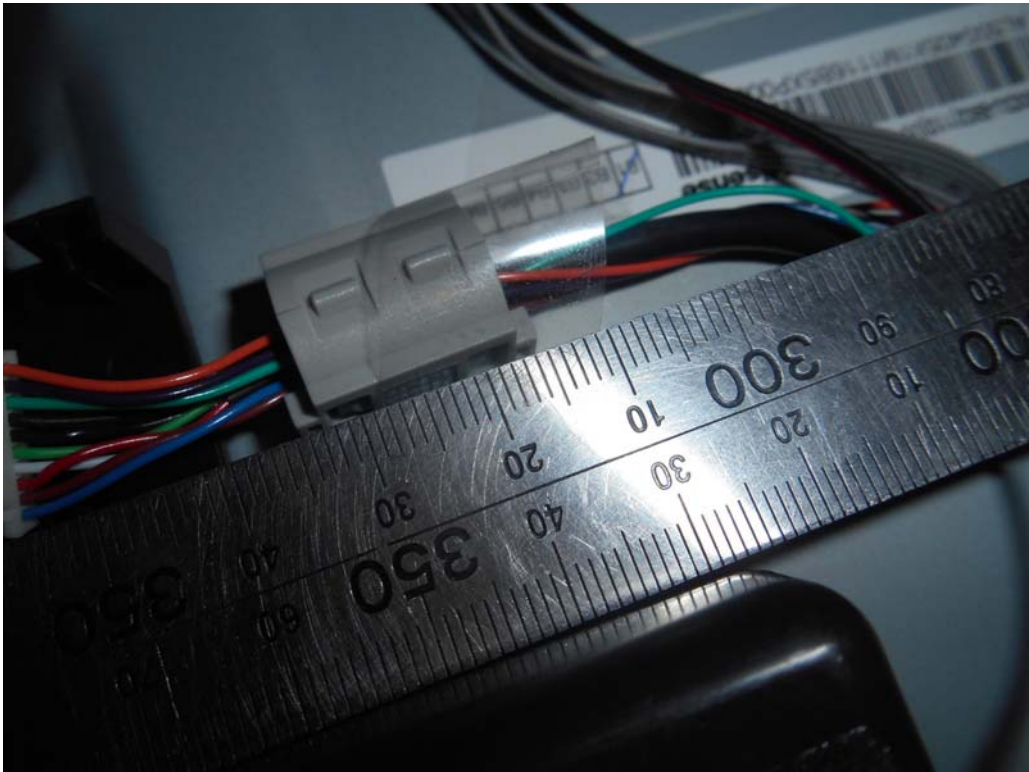


FIGURE 24  
LED LCD TV (M/N: LC-50N6000U)  
DEBUG#2

