

FIGURE 1
LED LCD TV (M/N: LC-50N6000U)
COVER REMOVED



FIGURE 2
LED LCD TV (M/N: LC-50N6000U)
LCD PANEL LABEL

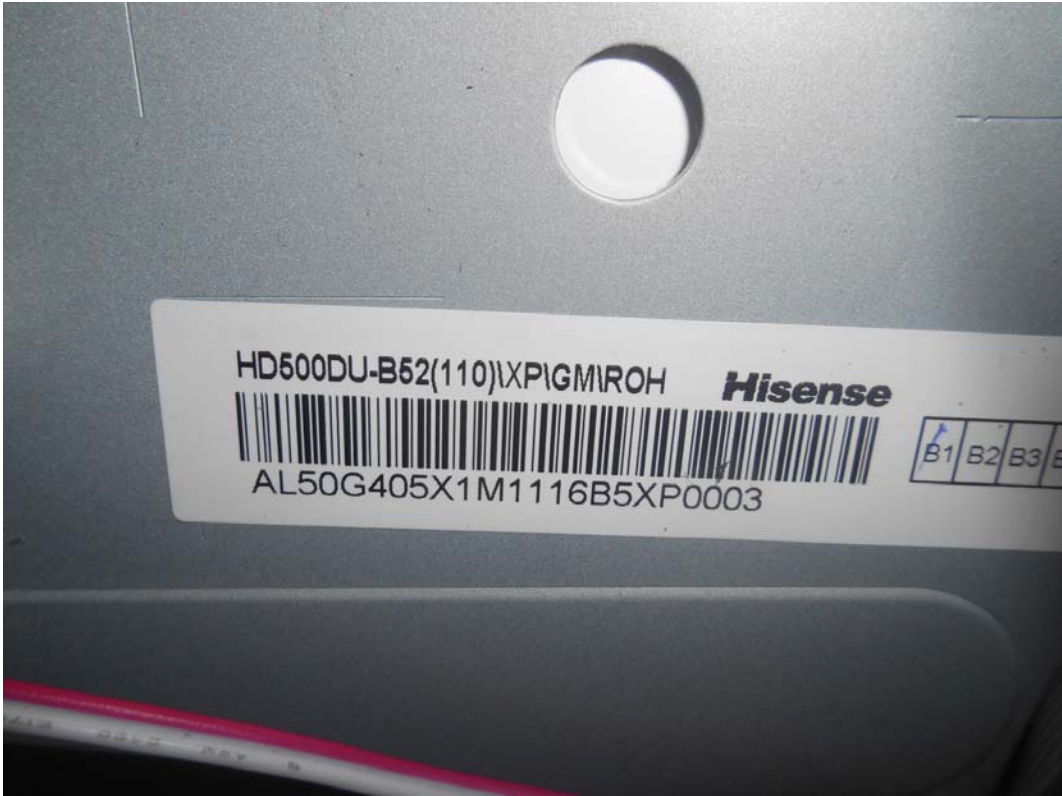


FIGURE 3
LED LCD TV (M/N: LC-50N6000U)
MAIN BOARD (COMPONENT SIDE)



FIGURE 4
LED LCD TV (M/N: LC-50N6000U)
MAIN BOARD (SOLDERED SIDE)

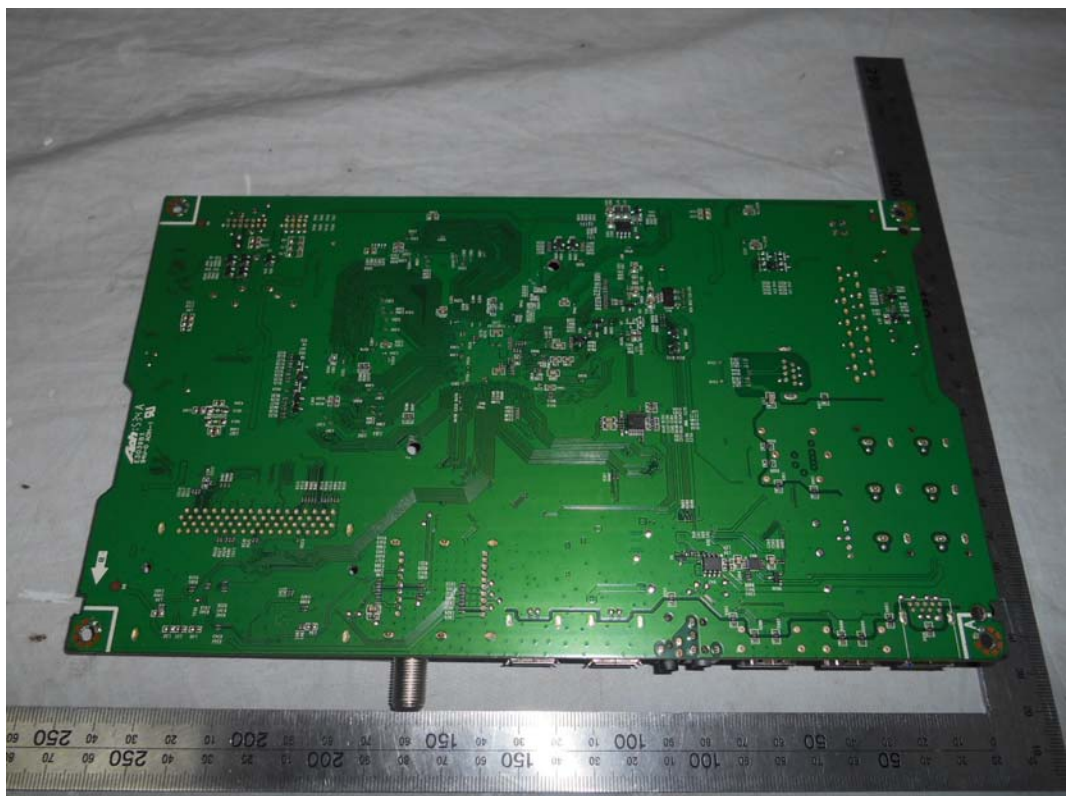


FIGURE 5
LED LCD TV (M/N: LC-50N6000U)
CHIP & CRYSTAL ON MAIN BOARD

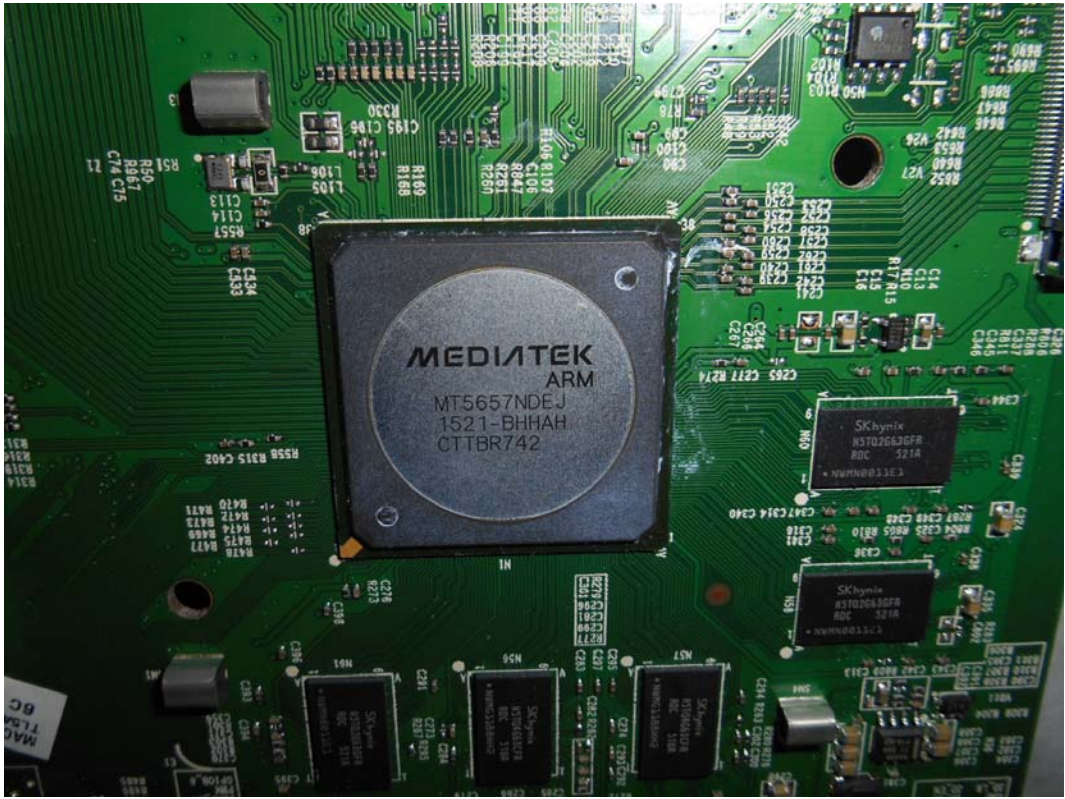


FIGURE 6
LED LCD TV (M/N: LC-50N6000U)
TUNER



FIGURE 7
LED LCD TV (M/N: LC-50N6000U)
TUNER BOARD (COMPONENT SIDE)

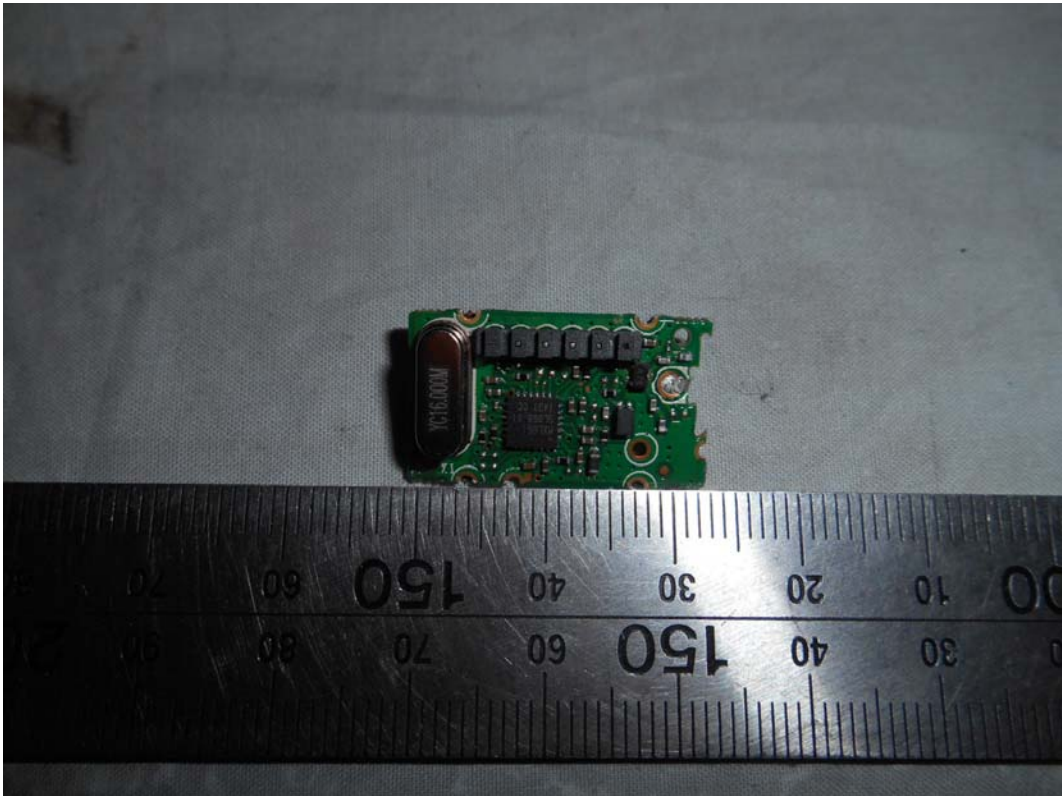


FIGURE 8
LED LCD TV (M/N: LC-50N6000U)
TUNER BOARD (SOLDERED SIDE)

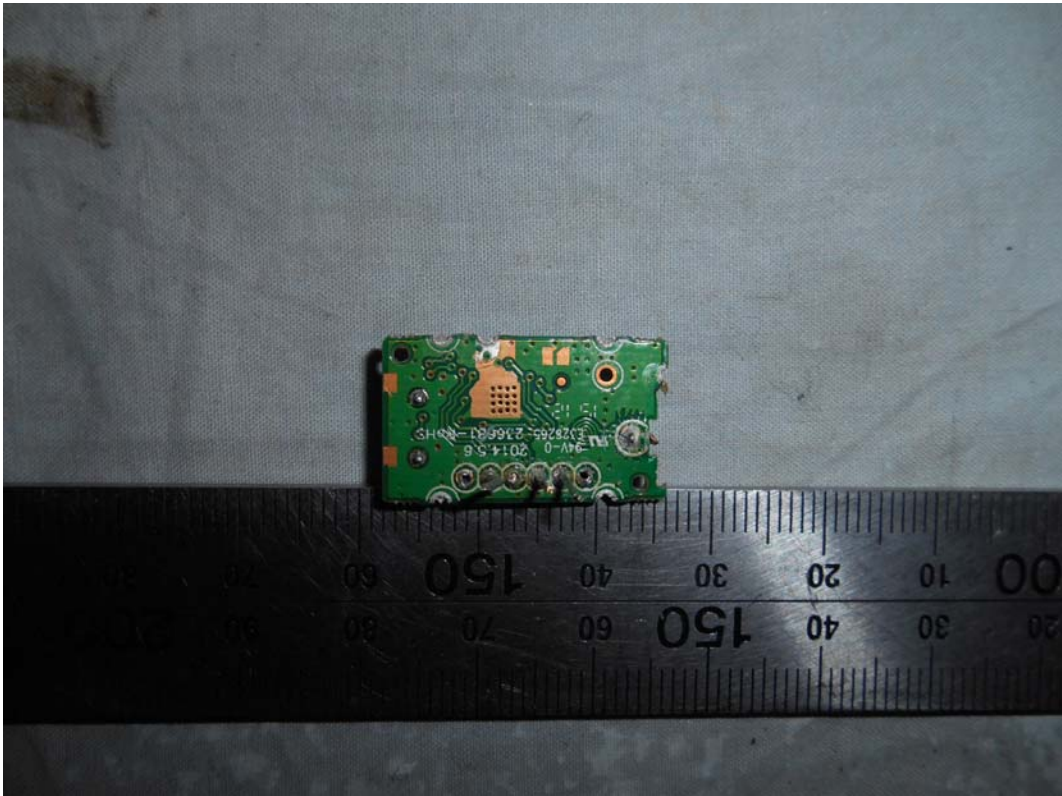


FIGURE 9
LED LCD TV (M/N: LC-50N6000U)
TUNER CRYSTAL ON MAIN BOARD



FIGURE 10
LED LCD TV (M/N: LC-50N6000U)
PANEL BOARD (COMPONENT SIDE)

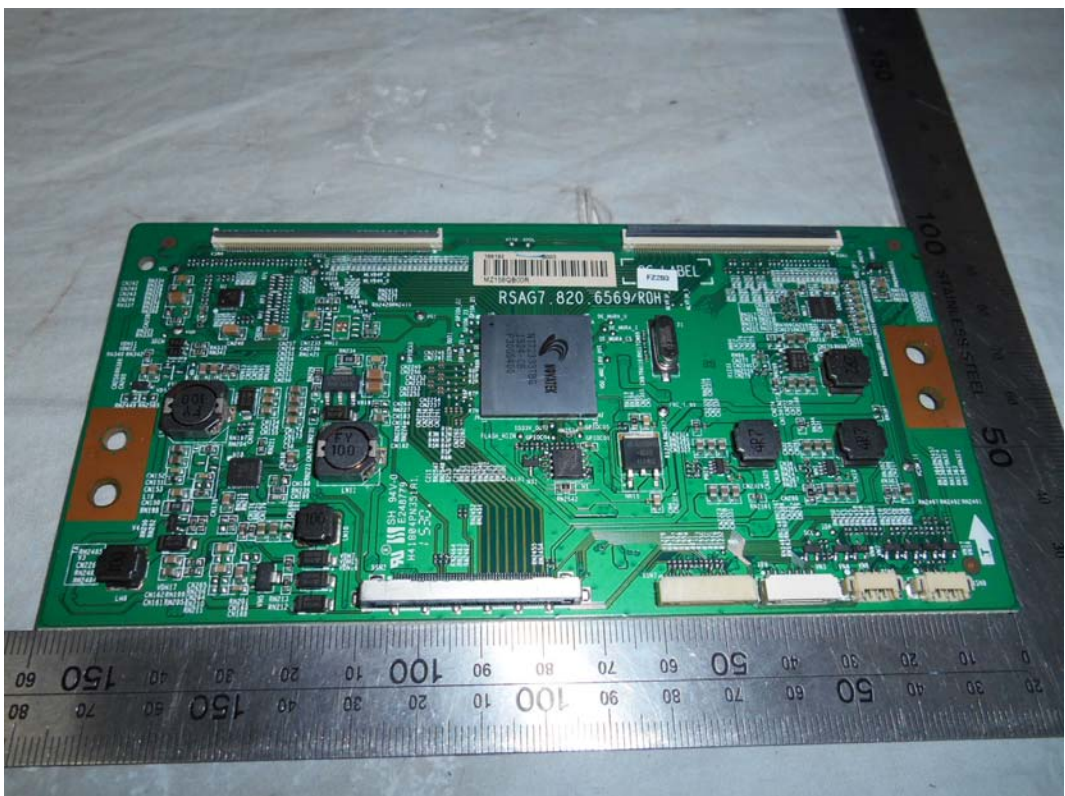


FIGURE 11
LED LCD TV (M/N: LC-50N6000U)
PANEL BOARD (SOLDERED SIDE)

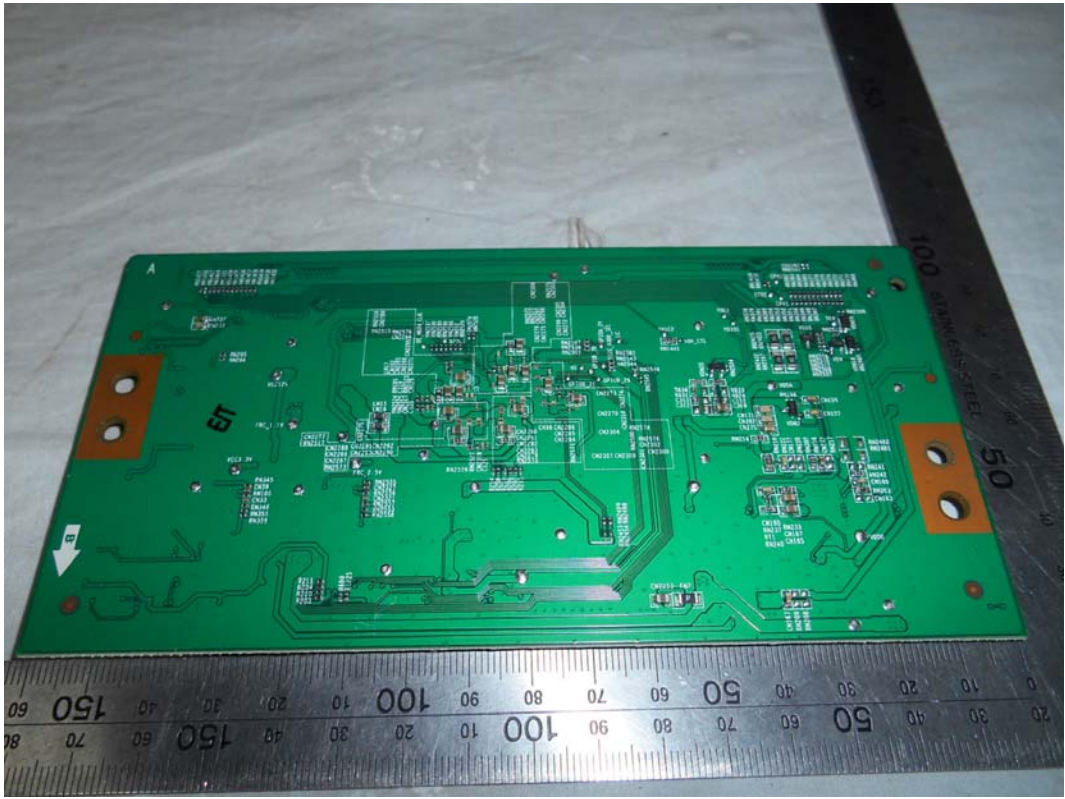


FIGURE 12
LED LCD TV (M/N: LC-50N6000U)
CHIP & CRYSTAL ON PANEL BOARD

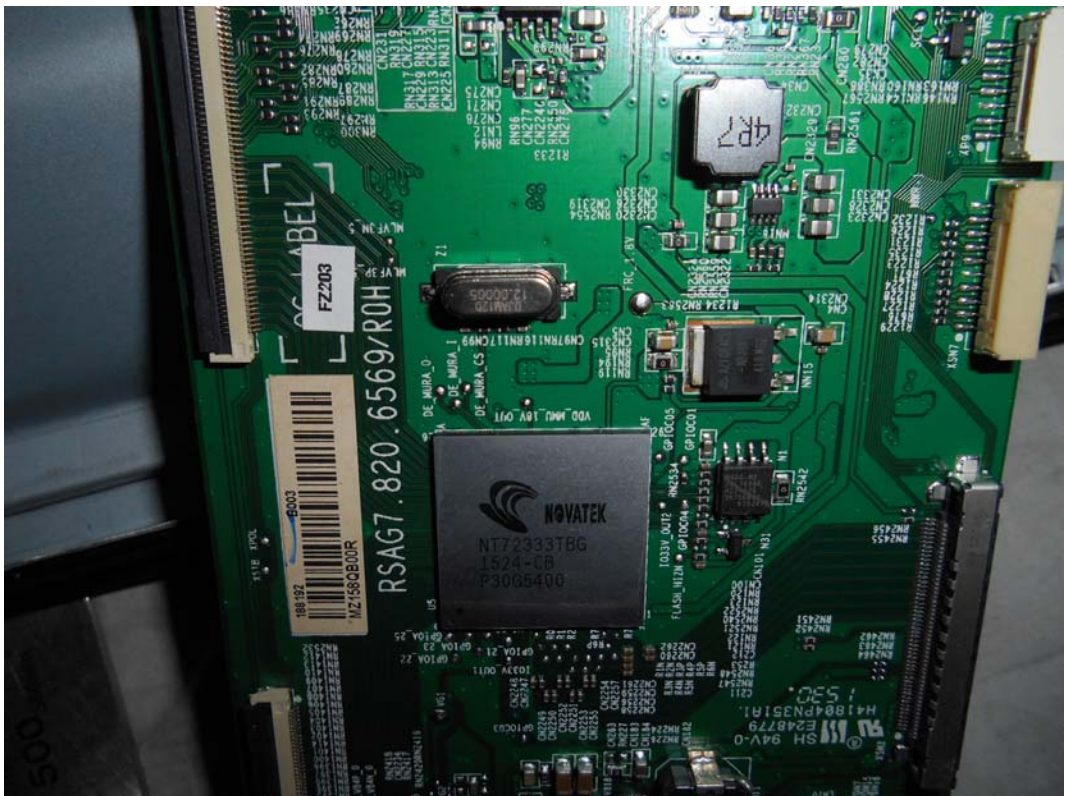


FIGURE 13
LED LCD TV (M/N: LC-50N6000U)
RF BOARD (COMPONENT SIDE)



FIGURE 14
LED LCD TV (M/N: LC-50N6000U)
RF BOARD (SOLDERED SIDE)



FIGURE 15
LED LCD TV (M/N: LC-50N6000U)
CHIP & CRYSTAL ON RF BOARD

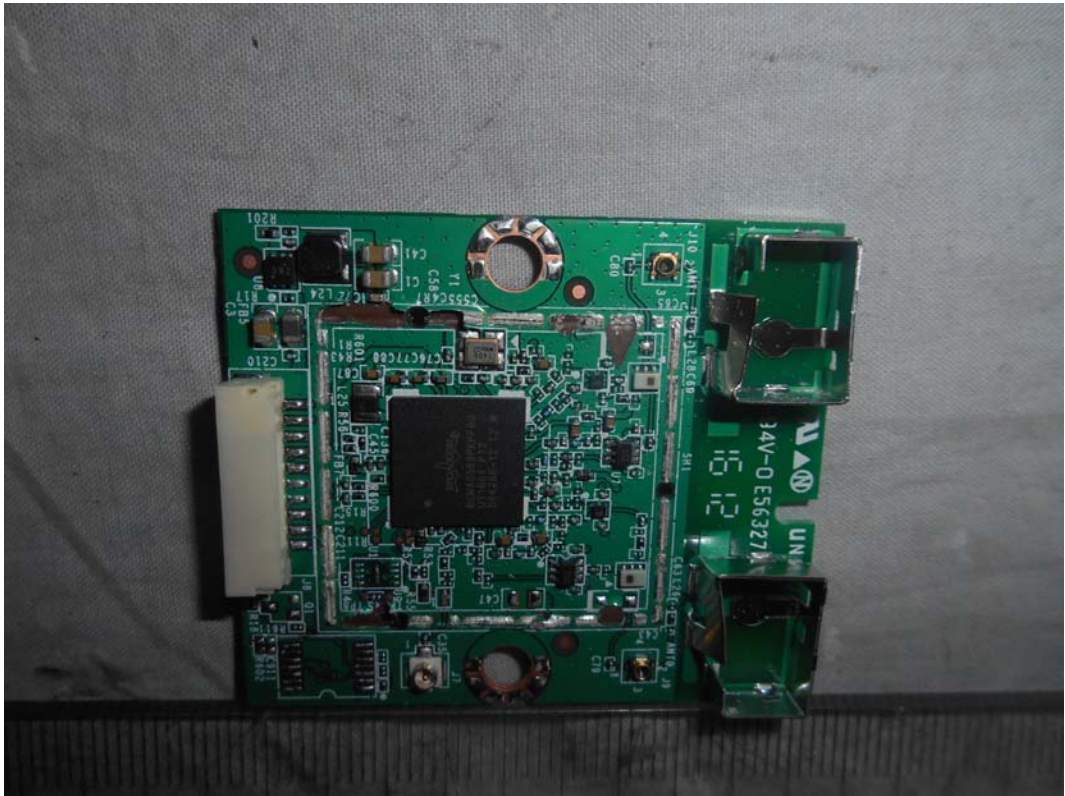


FIGURE 16
LED LCD TV (M/N: LC-50N6000U)
RF BOARD LABEL



FIGURE 17
LED LCD TV (M/N: LC-50N6000U)
POWER BOARD (COMPONENT SIDE)

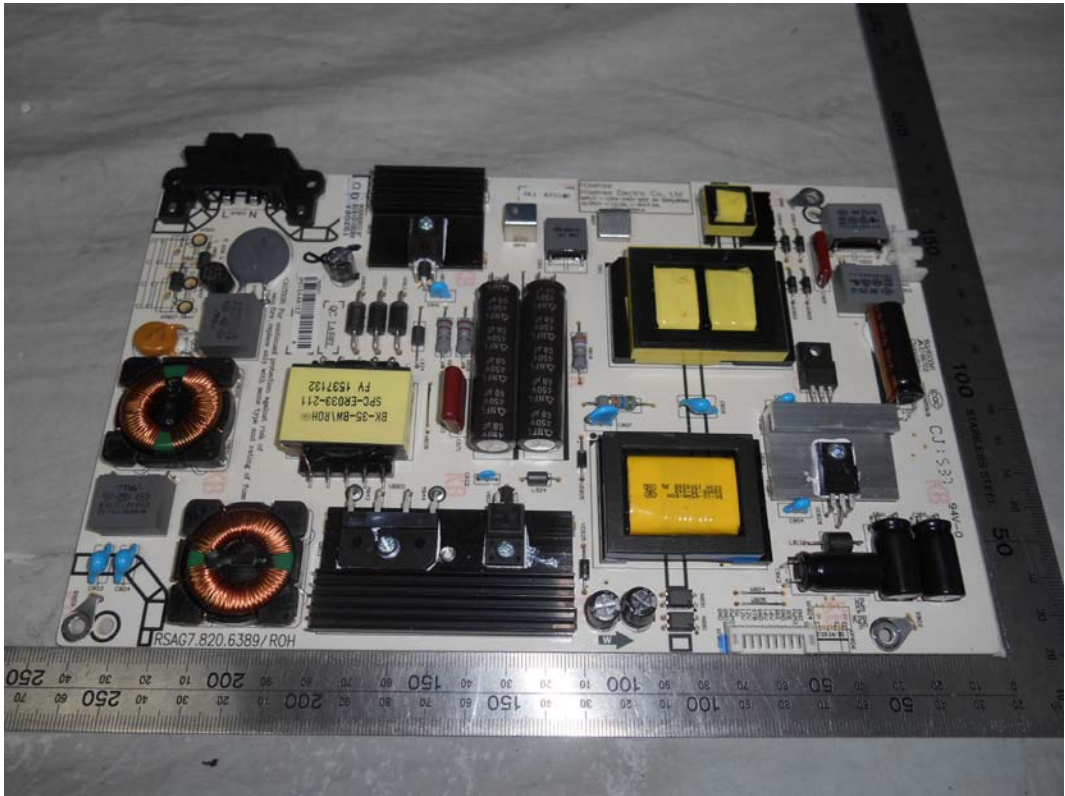


FIGURE 18
LED LCD TV (M/N: LC-50N6000U)
POWER BOARD (SOLDERED SIDE)

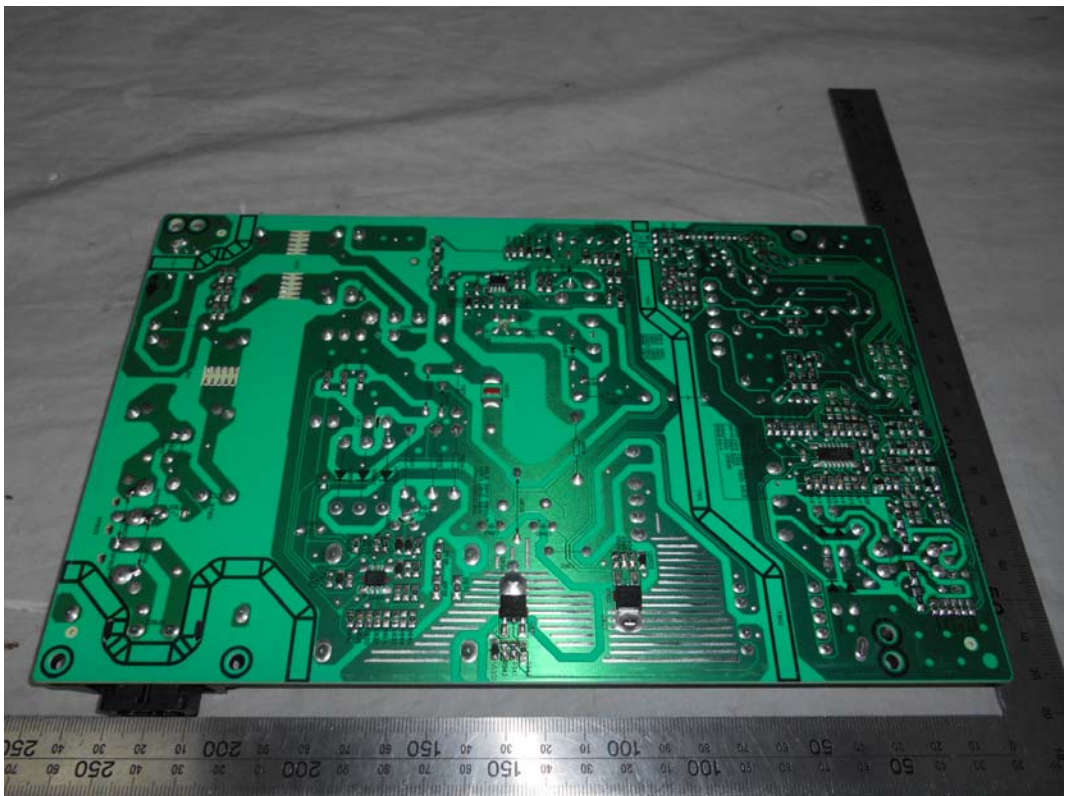


FIGURE 19
LED LCD TV (M/N: LC-50N6000U)
KEY BOARD (COMPONENT SIDE)



FIGURE 20
LED LCD TV (M/N: LC-50N6000U)
KEY BOARD (SOLDERED SIDE)

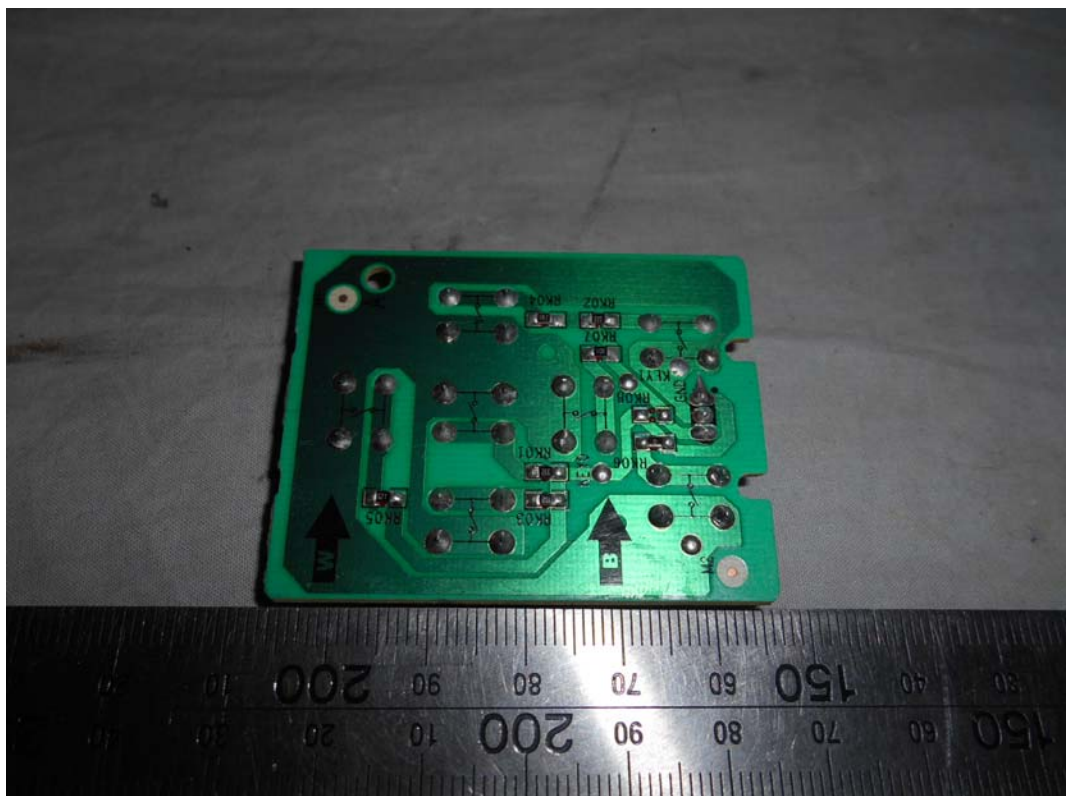


FIGURE 21
LED LCD TV (M/N: LC-50N6000U)
IR BOARD (COMPONENT SIDE)

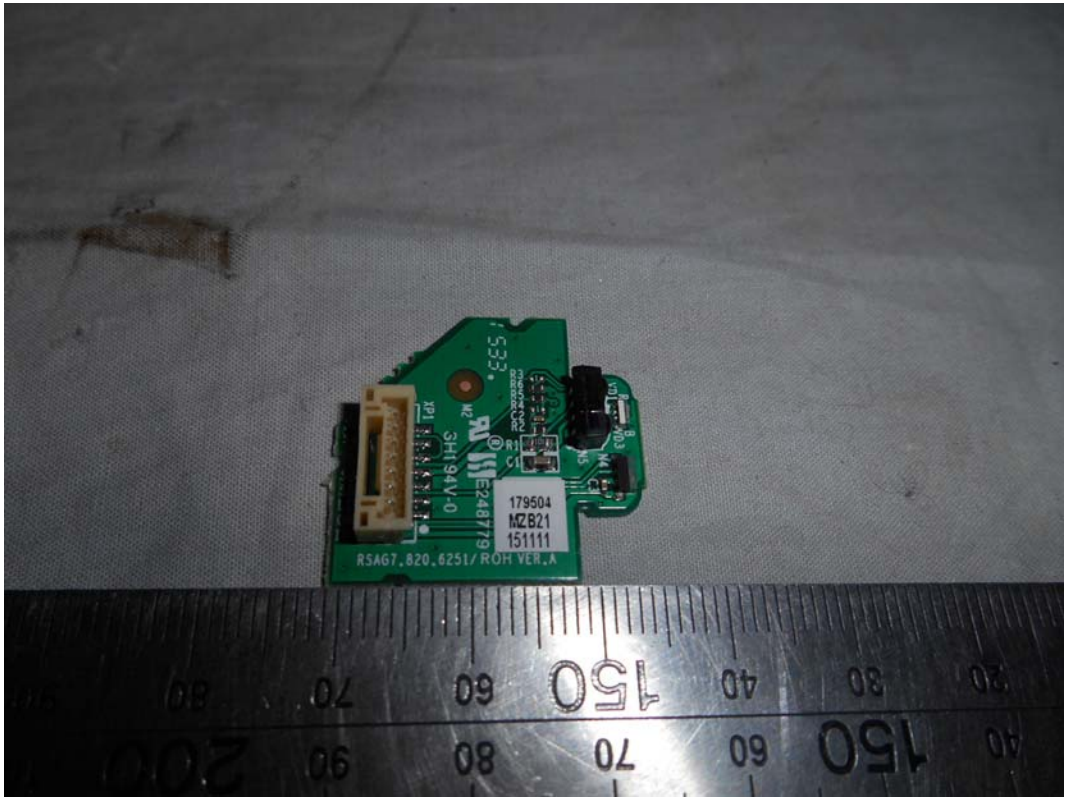


FIGURE 22
LED LCD TV (M/N: LC-50N6000U)
IR BOARD (SOLDERED SIDE)



FIGURE 23
LED LCD TV (M/N: LC-50N6000U)
DEBUG#1

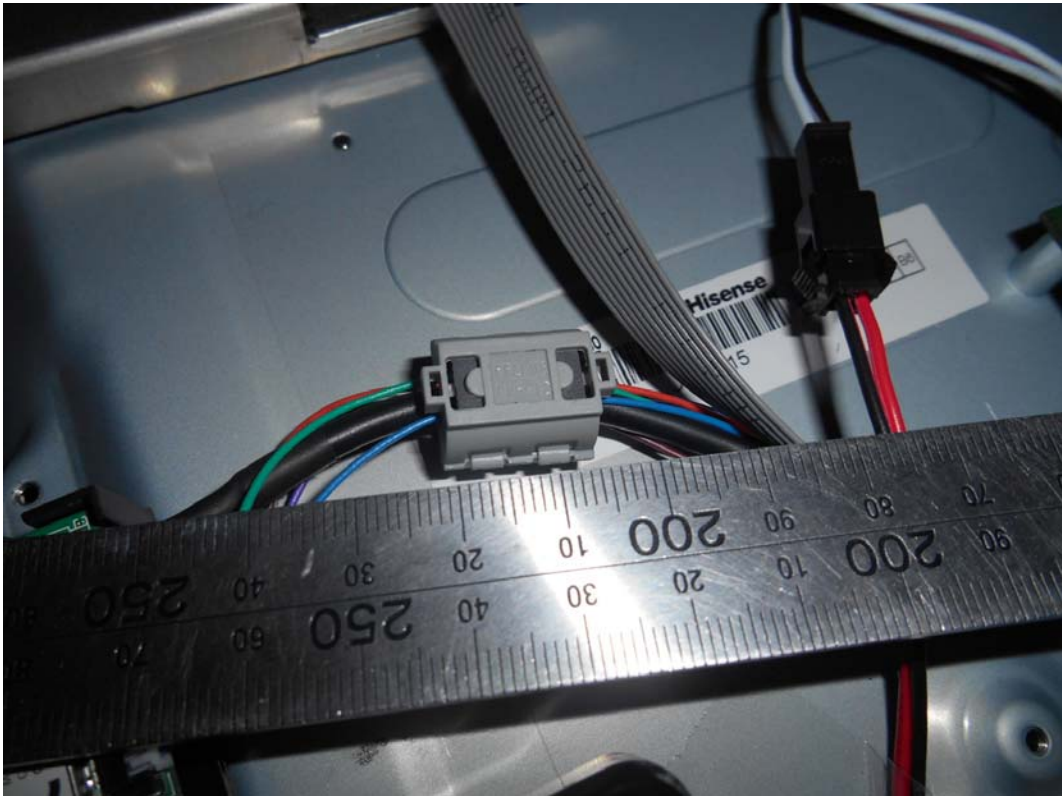


FIGURE 24
LED LCD TV (M/N: LC-50N6000U)
DEBUG#2

