

FIGURE 1
LED LCD TV (M/N: LC-65N7000U)
COVER REMOVED



FIGURE 2
LED LCD TV (M/N: LC-65N7000U)
LCD PANEL LABEL



FIGURE 3
LED LCD TV (M/N: LC-65N7000U)
POWER BOARD (COMPONENT SIDE)

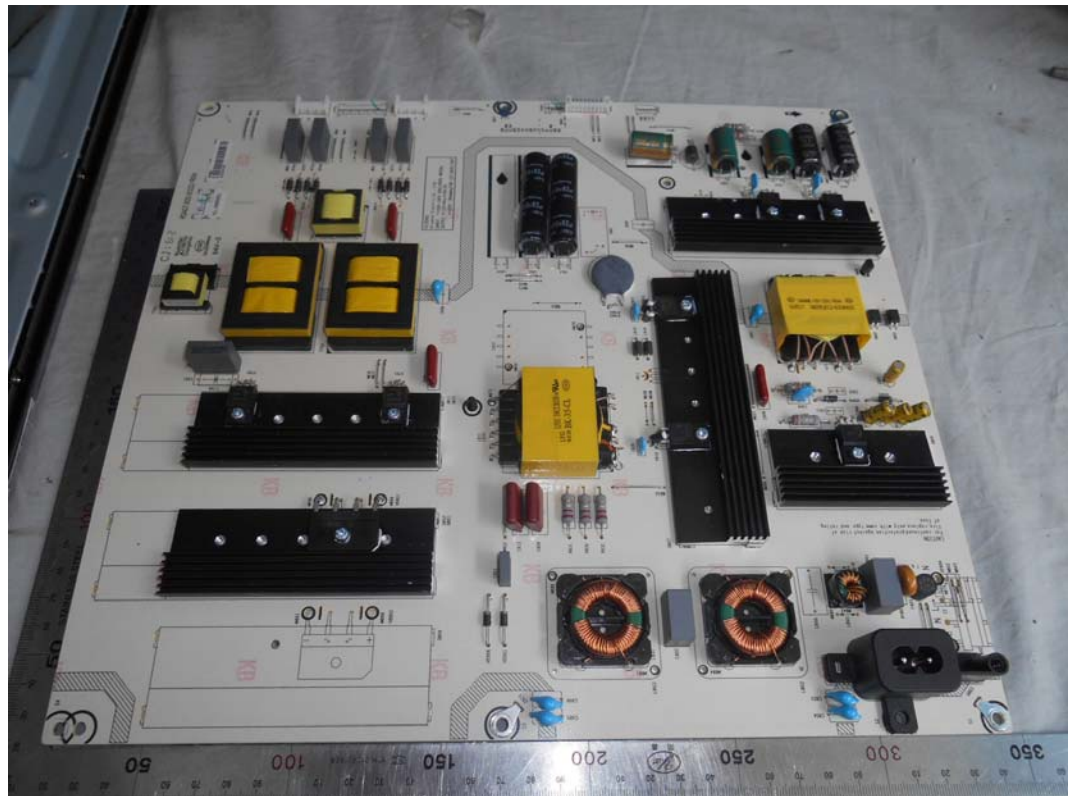


FIGURE 4
LED LCD TV (M/N: LC-65N7000U)
POWER BOARD (SOLDERED SIDE)

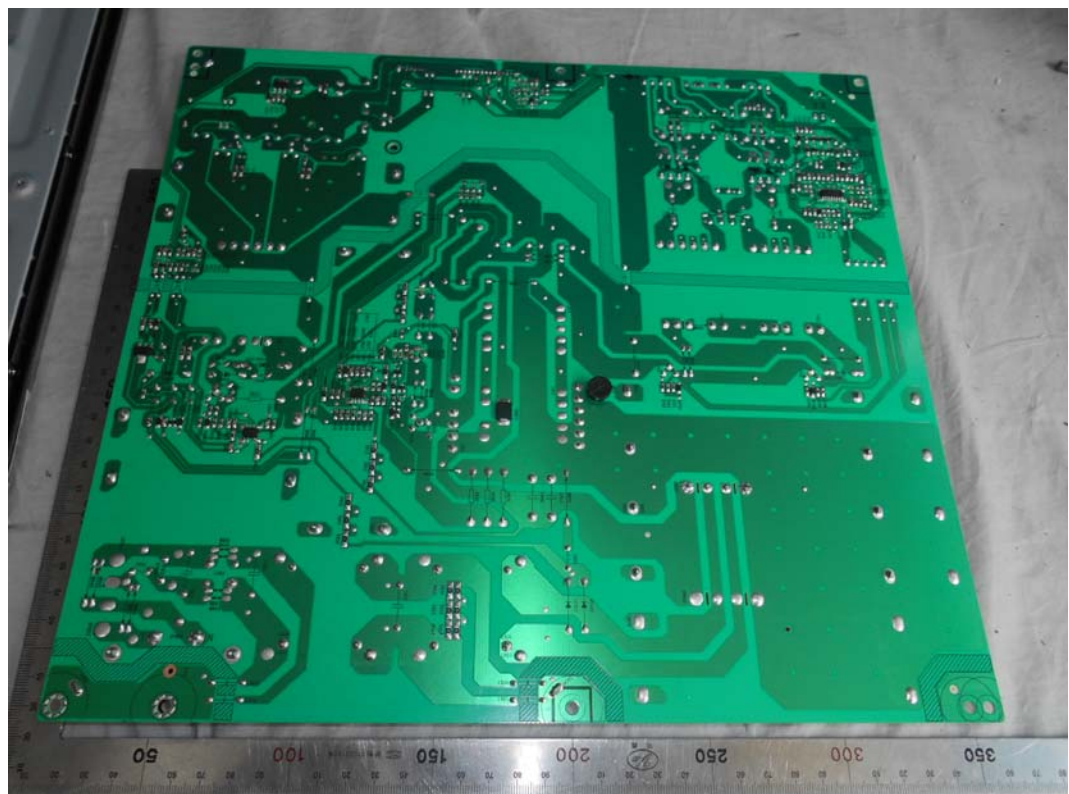


FIGURE 5
LED LCD TV (M/N: LC-65N7000U)
MAIN BOARD (COMPONENT SIDE)



FIGURE 6
LED LCD TV (M/N: LC-65N7000U)
MAIN BOARD (SOLDERED SIDE)

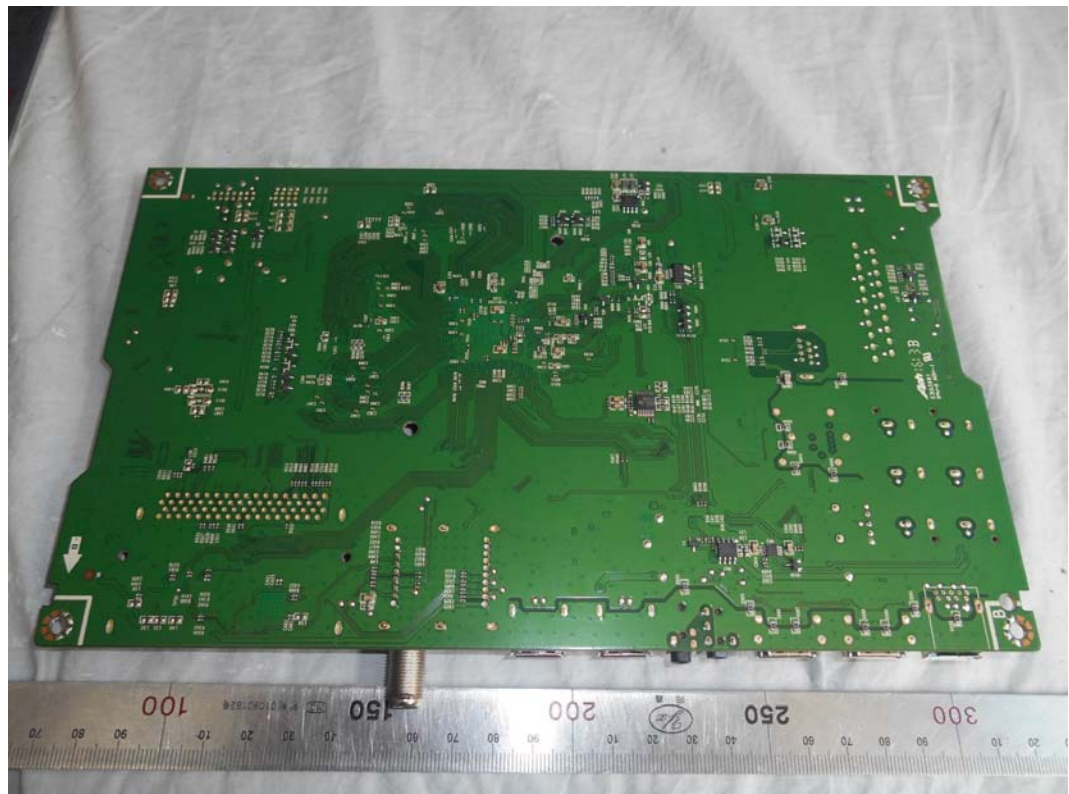


FIGURE 7
LED LCD TV (M/N: LC-65N7000U)
CHIP & CRYSTAL ON MAIN BOARD

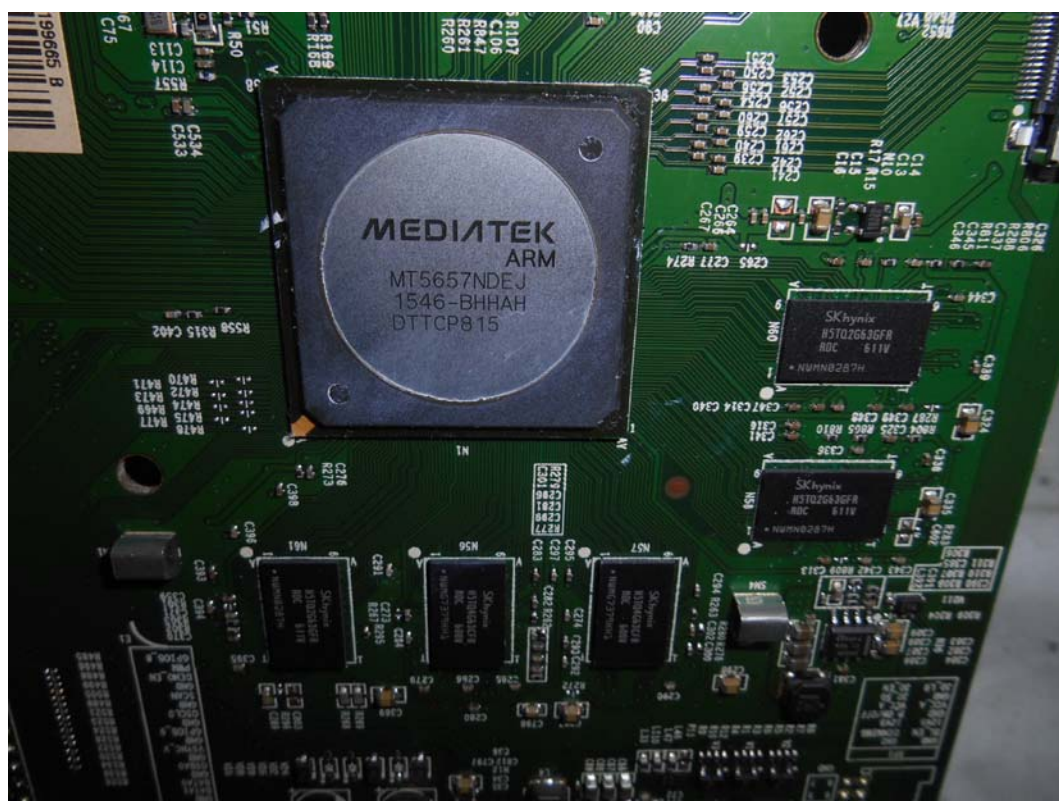


FIGURE 8
LED LCD TV (M/N: LC-65N7000U)
TUNER



FIGURE 9
LED LCD TV (M/N: LC-65N7000U)
TUNER BOARD (COMPONENT SIDE)

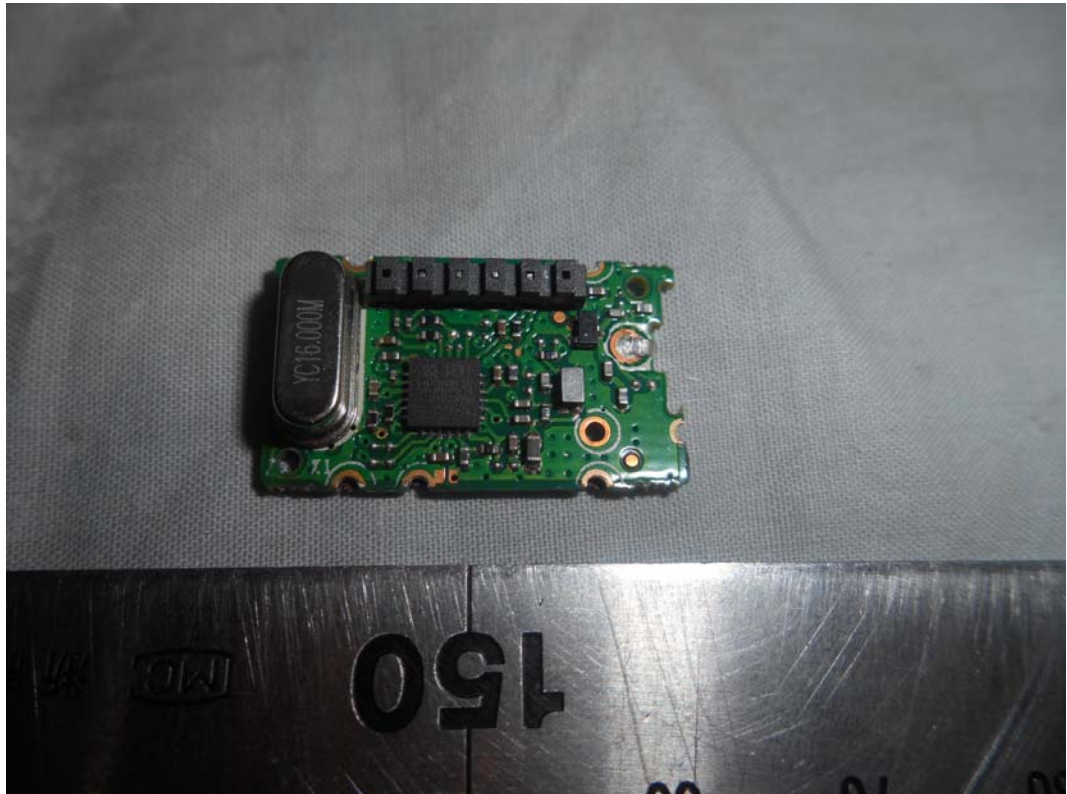


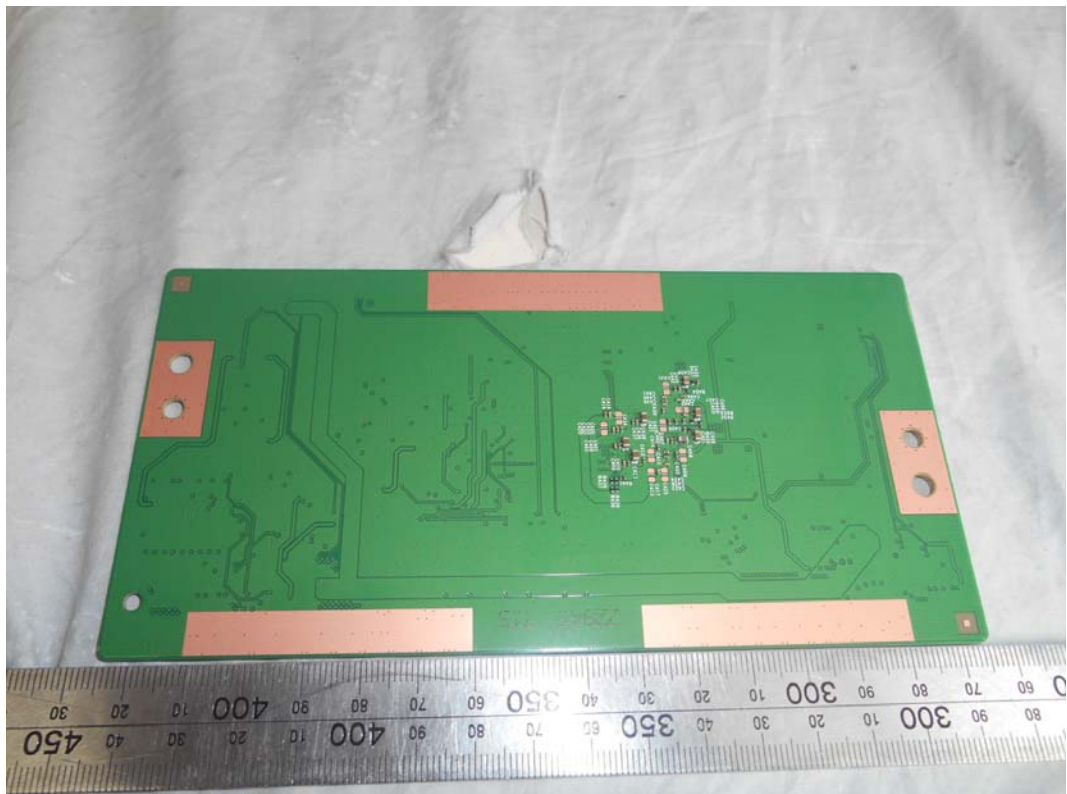
FIGURE 10
LED LCD TV (M/N: LC-65N7000U)
TUNER BOARD (COMPONENT SIDE)



FIGURE 11
LED LCD TV (M/N: LC-65N7000U)
PANEL BOARD (SOLDERED SIDE)



FIGURE 12
LED LCD TV (M/N: LC-65N7000U)
PANEL BOARD (SOLDERED SIDE)



CHIP & CRYSTAL ON PANEL BOARD

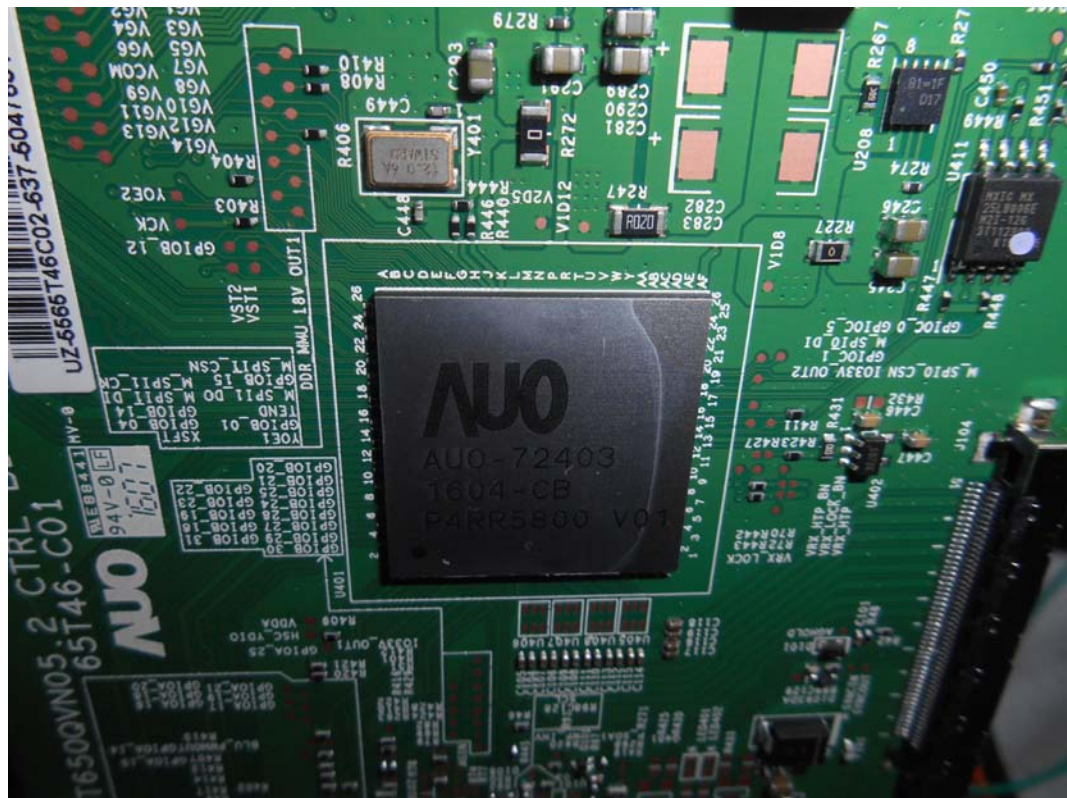


FIGURE 14
LED LCD TV (M/N: LC-65N7000U)
RF BOARD (COMPONENT SIDE)

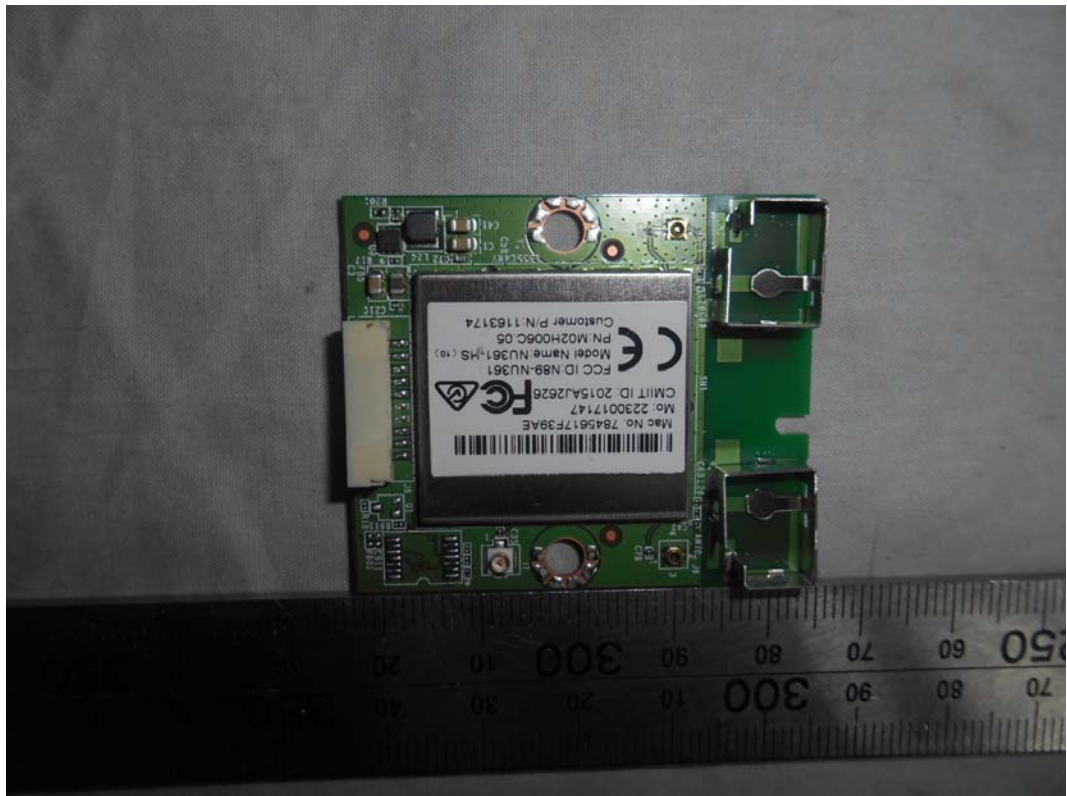


FIGURE 15
LED LCD TV (M/N: LC-65N7000U)
RF BOARD (SOLDERED SIDE)

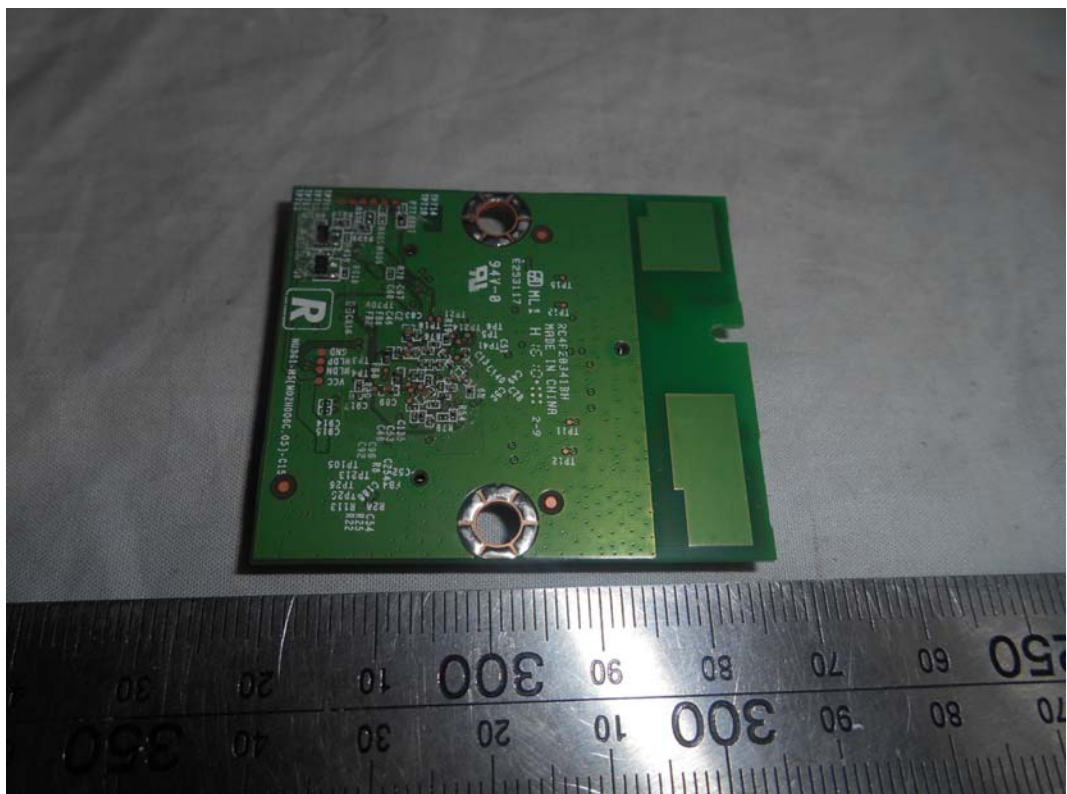
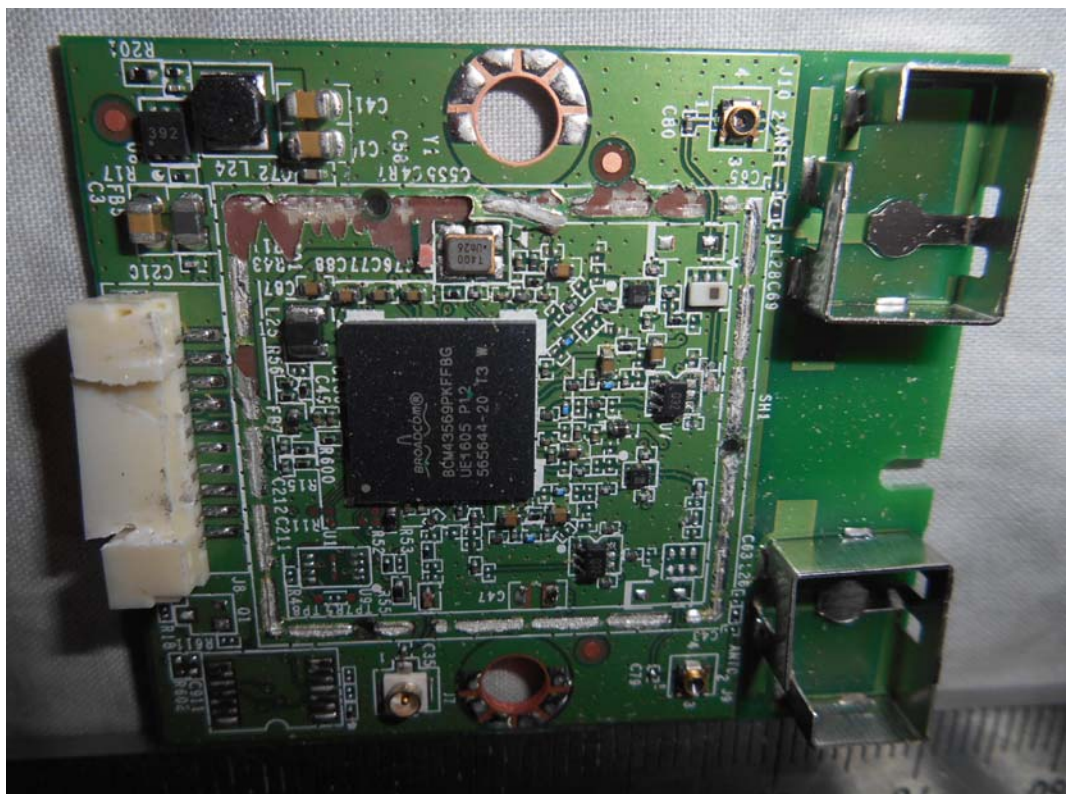


FIGURE 16
LED LCD TV (M/N: LC-65N7000U)
RF BOARD LABEL



FIGURE 17
LED LCD TV (M/N: LC-65N7000U)
RF BOARD COVER REMOVED



A photograph of a small, rectangular, light-colored object, possibly a piece of wood or plastic, with several holes and a ruler for scale. The object is positioned horizontally above a ruler. The ruler has markings in inches (0 to 10) and centimeters (0 to 10). The object has a large circular hole on the left, a smaller circular hole in the center, and a small rectangular slot on the right. There are also two small circular holes near the bottom edge. The object appears to be a component of a larger assembly.

FIGURE 20
LED LCD TV (M/N: LC-65N7000U)
IR BOARD (COMPONENT SIDE)



FIGURE 21
LED LCD TV (M/N: LC-65N7000U)
IR BOARD (SOLDERED SIDE)

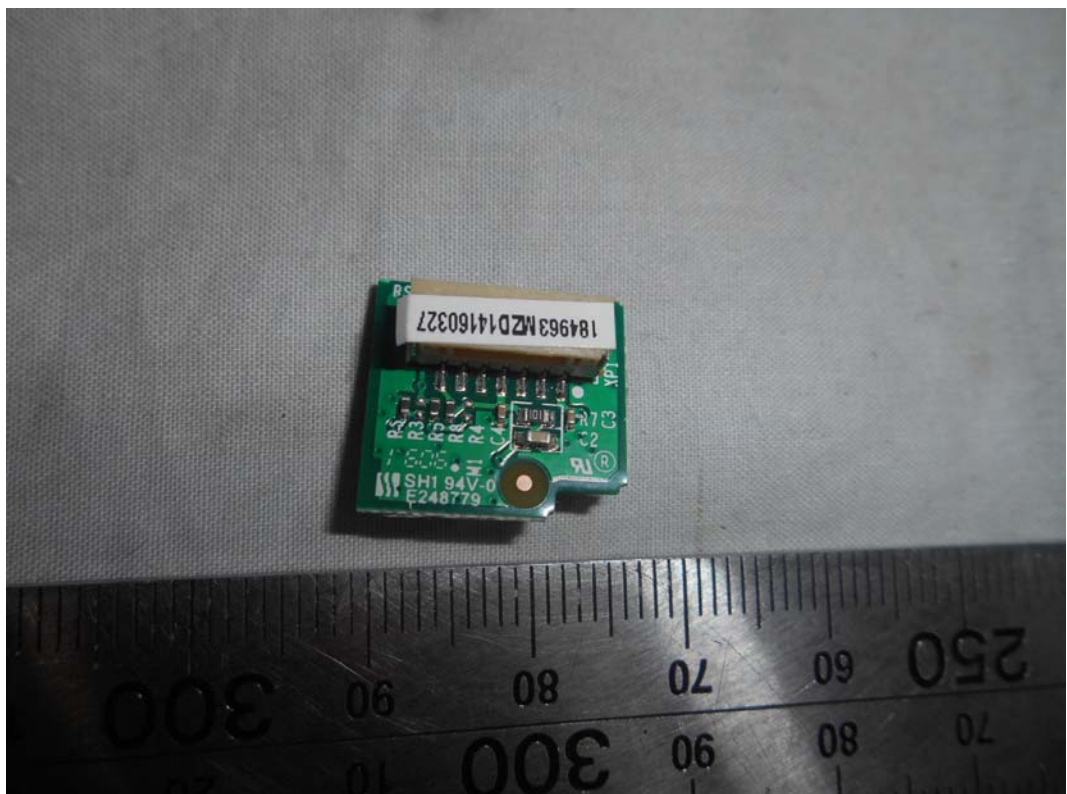


FIGURE 22
LED LCD TV (M/N: LC-65N7000U)
DEBUG

