

*FIGURE 1*  
*LED LCD TV (M/N: 65H7B)*  
*COVER REMOVED #1*



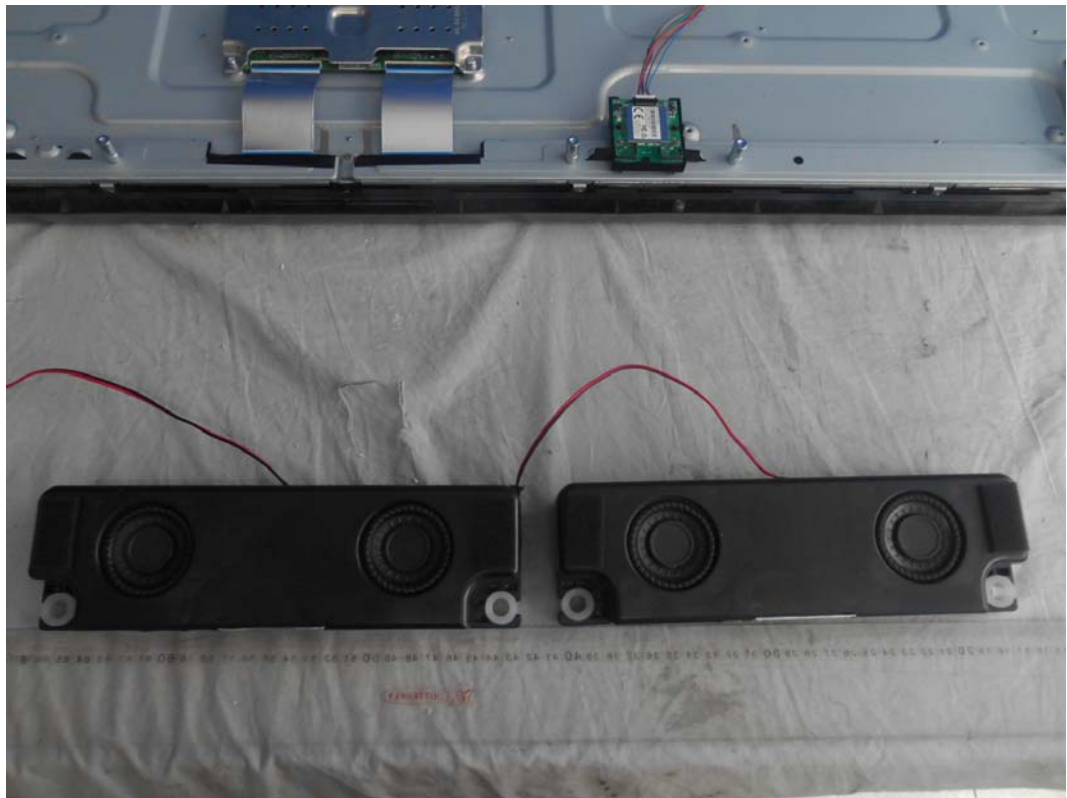
*FIGURE 2*  
*LED LCD TV (M/N: 65H7B)*  
*COVER REMOVED #2*



*FIGURE 3*  
*LED LCD TV (M/N: 65H7B)*  
*LCD PANEL LABEL*



*FIGURE 4*  
*LED LCD TV (M/N: 65H7B)*  
*SPEAKER*





*FIGURE 5*  
*LED LCD TV (M/N: 65H7B)*  
*MAIN BOARD (COMPONENT SIDE)*



*FIGURE 6*  
*LED LCD TV (M/N: 65H7B)*  
*MAIN BOARD (SOLDERED SIDE)*

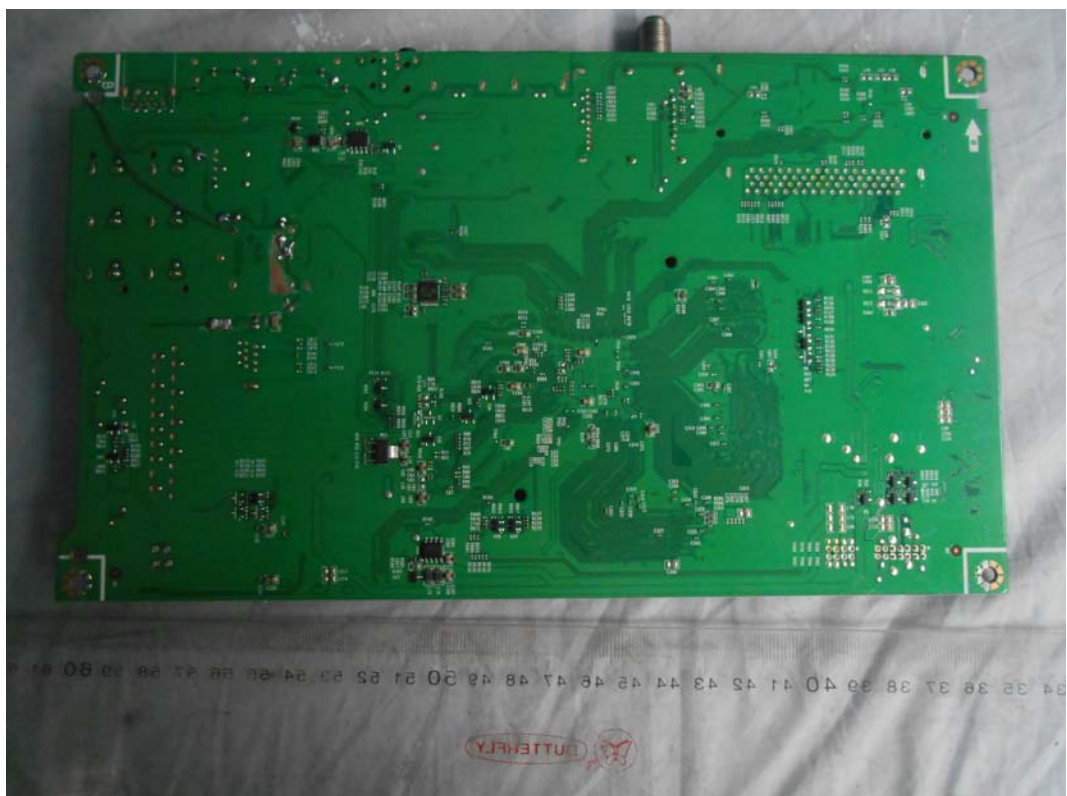






FIGURE 8  
LED LCD TV (M/N: 65H7B)  
TUNER ON MAIN BOARD

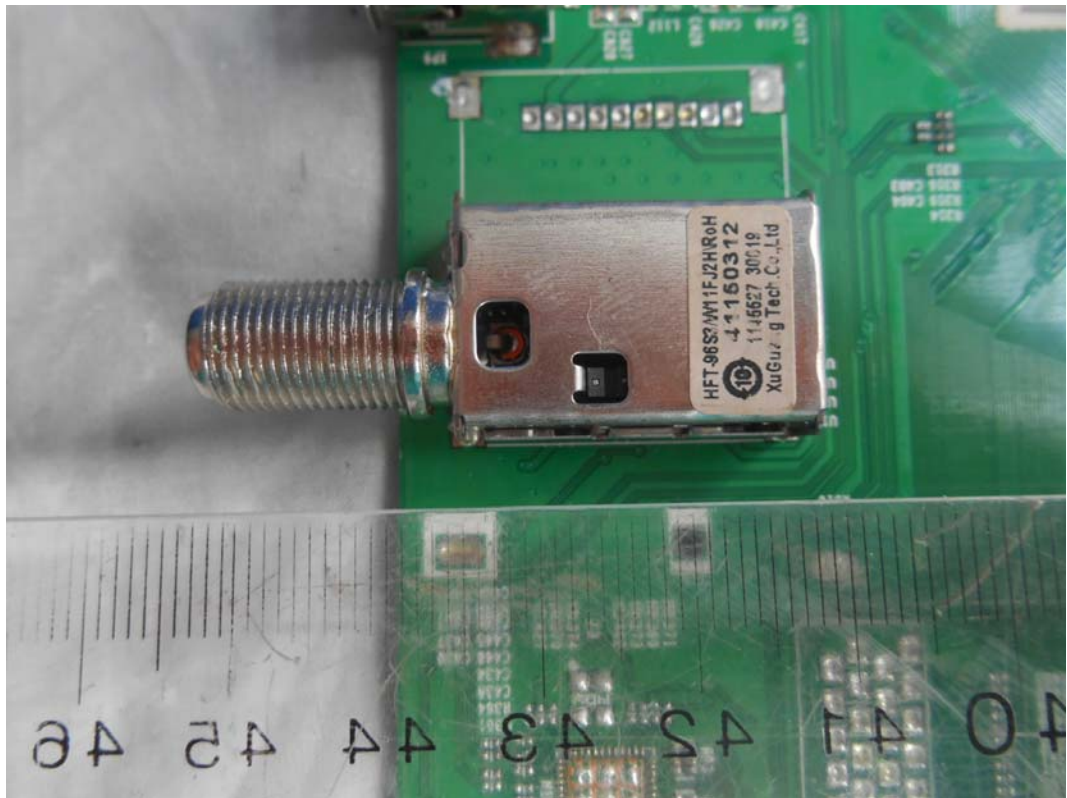
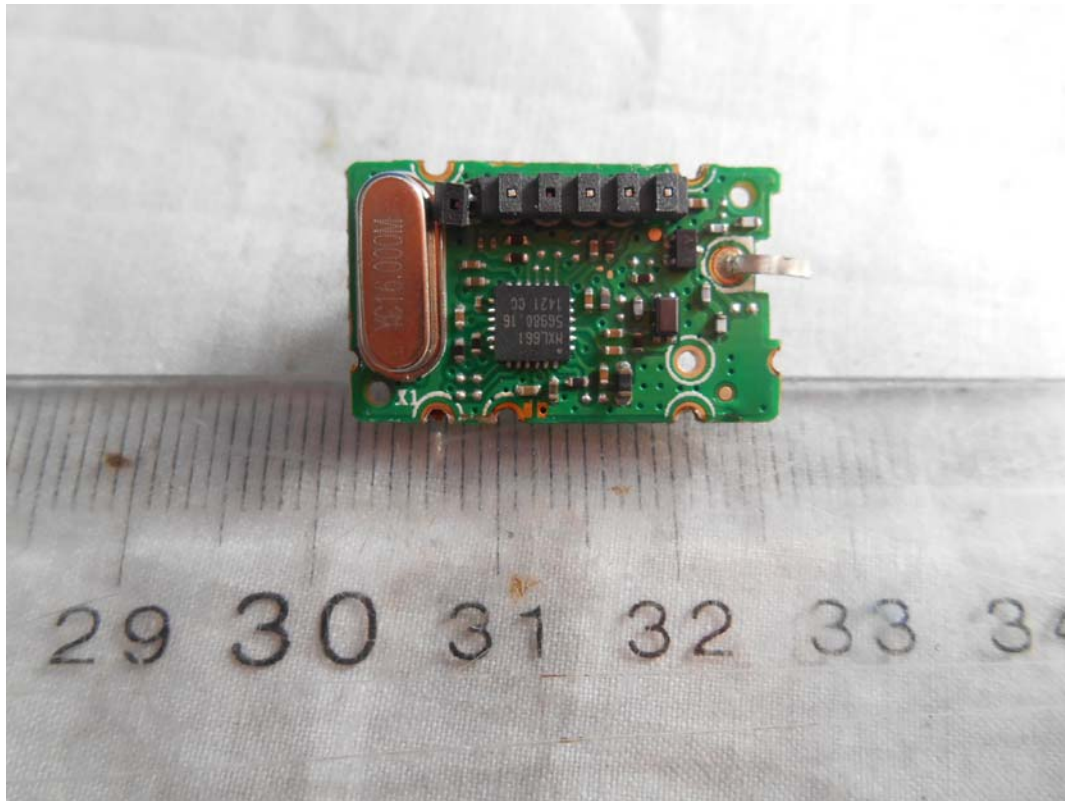


FIGURE 9  
LED LCD TV (M/N: 65H7B)  
LABEL OF TUNER



*FIGURE 10*  
*LED LCD TV (M/N: 65H7B)*  
*TUNER BOARD (COMPONENT SIDE)*



*FIGURE 11*  
*LED LCD TV (M/N: 65H7B)*  
*TUNER BOARD (SOLDERED SIDE)*

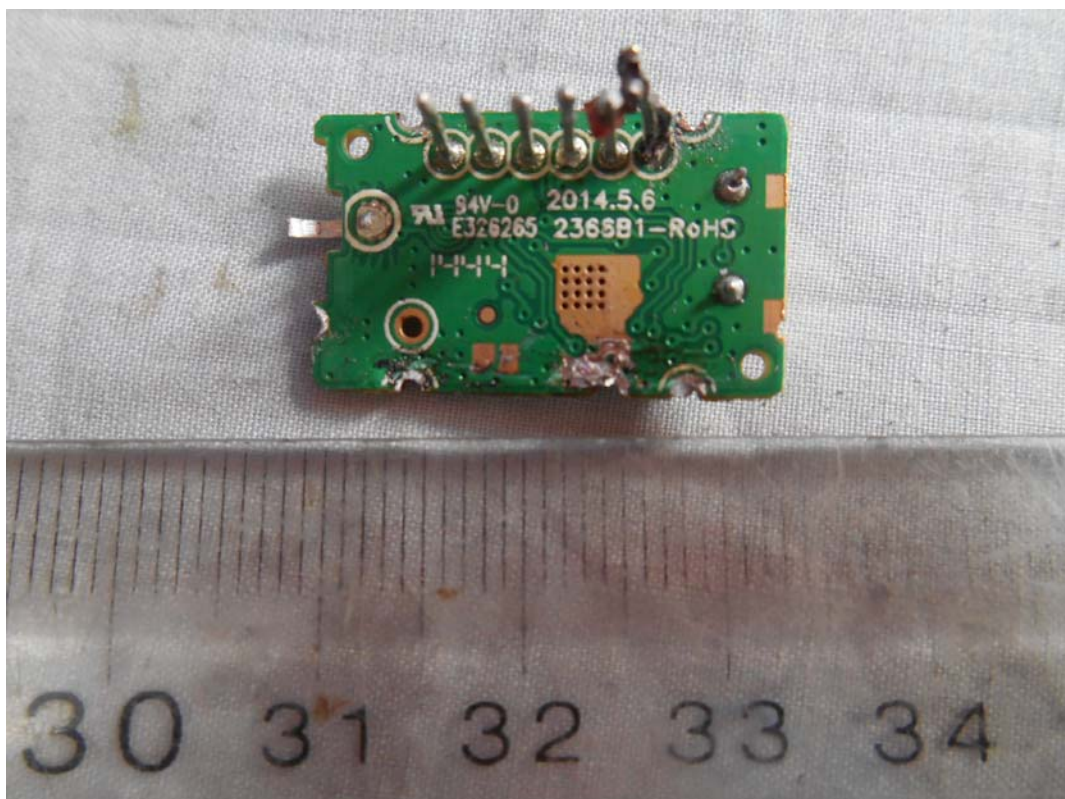




FIGURE 12  
LED LCD TV (M/N: 65H7B)  
RF BOARD (COMPONENT SIDE)



FIGURE 13  
LED LCD TV (M/N: 65H7B)  
RF BOARD (SOLDERED SIDE)





FIGURE 14  
LED LCD TV (M/N: 65H7B)  
LABEL OF RF BOARD



FIGURE 15  
LED LCD TV (M/N: 65H7B)  
RF BOARD (COVER REMOVED)

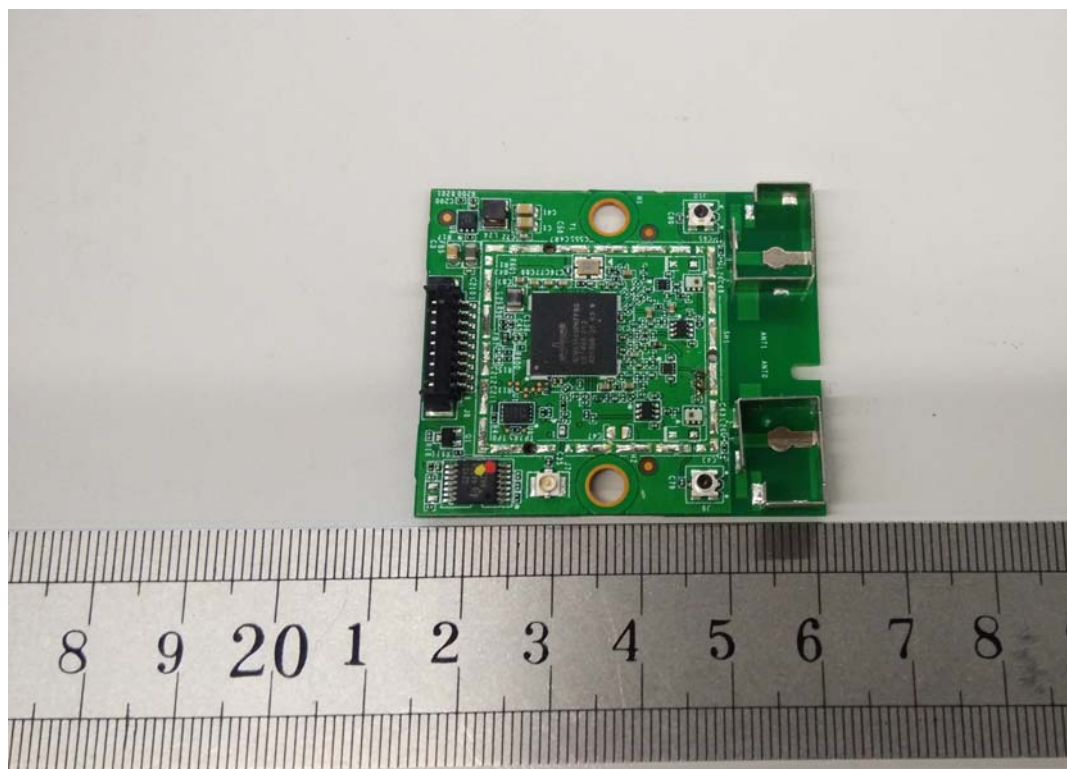
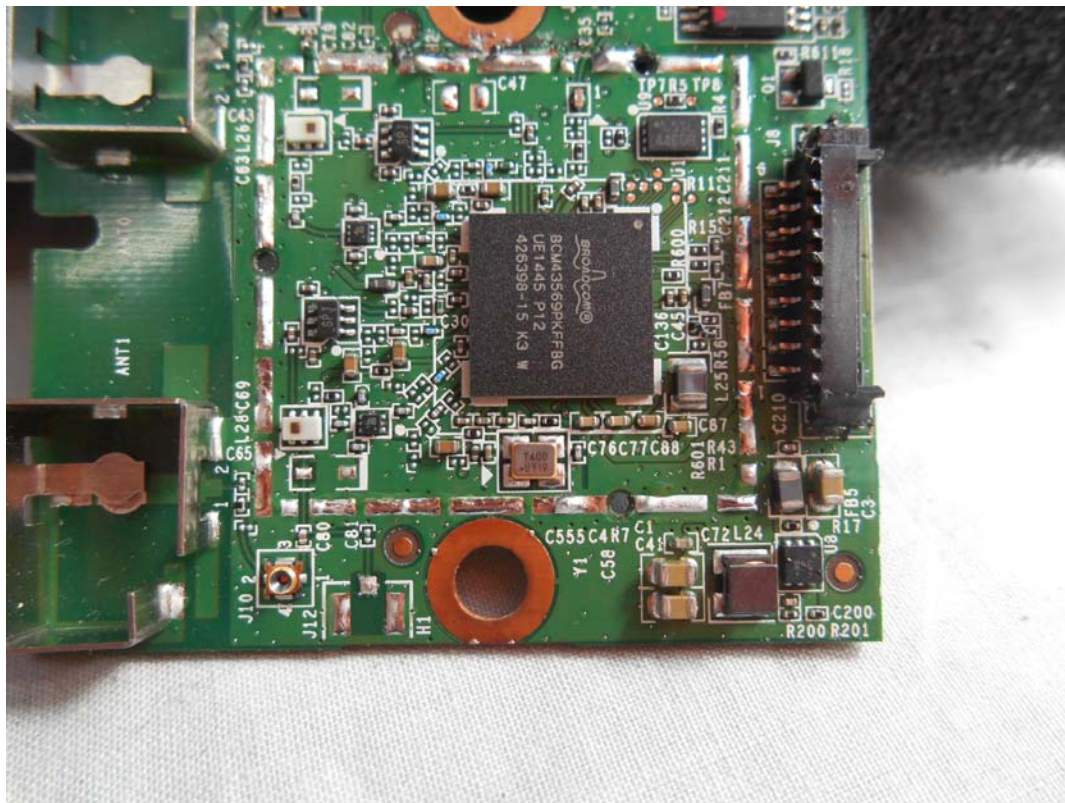
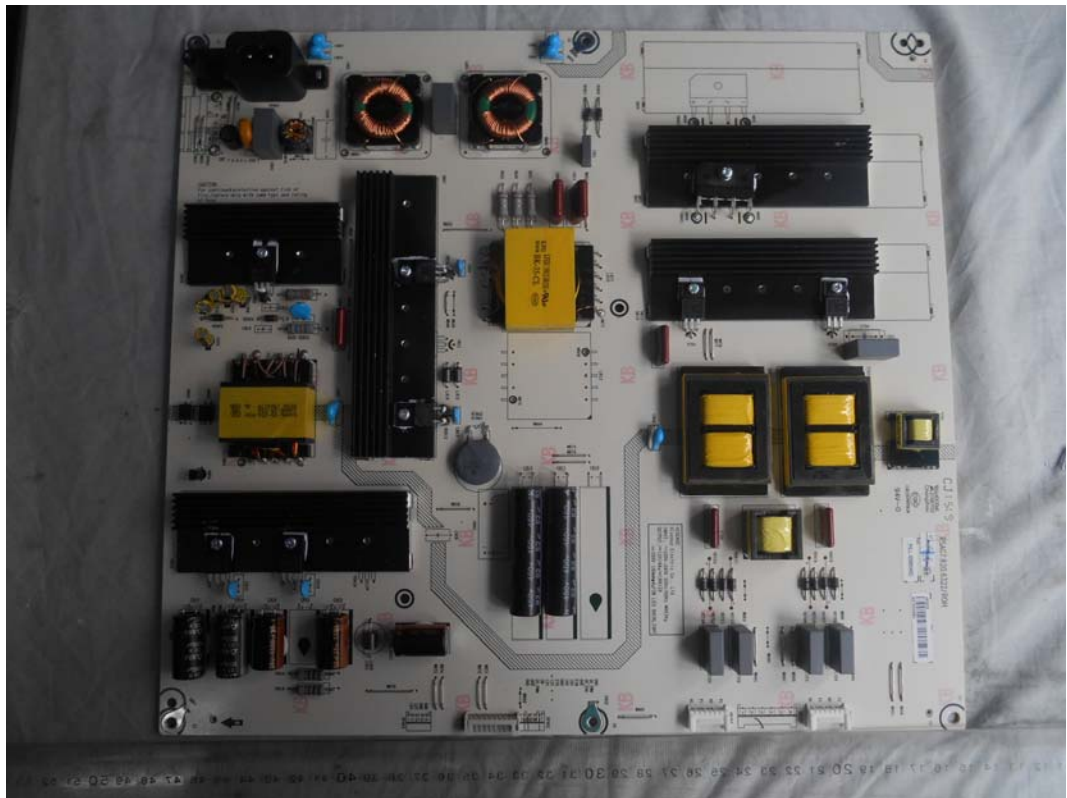


FIGURE 16  
LED LCD TV (M/N: 65H7B)  
CHIP AND CRYSTAL ON RF BOARD

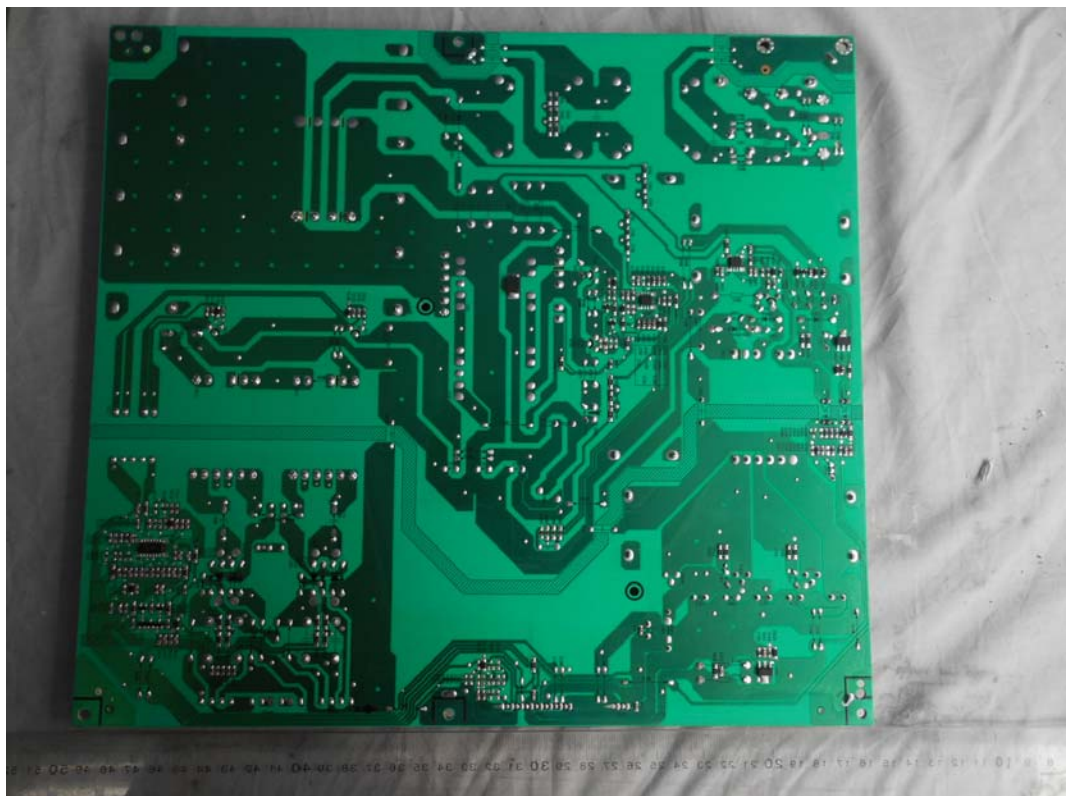




*FIGURE 17*  
*LED LCD TV (M/N: 65H7B)*  
*POWER BOARD (COMPONENT SIDE)*



*FIGURE 18*  
*LED LCD TV (M/N: 65H7B)*  
*POWER BOARD (SOLDERED SIDE)*





*FIGURE 19*  
*LED LCD TV (M/N: 65H7B)*  
*SIGNAL BOARD (COMPONENT SIDE)*



*FIGURE 20*  
*LED LCD TV (M/N: 65H7B)*  
*SIGNAL BOARD (SOLDERED SIDE)*

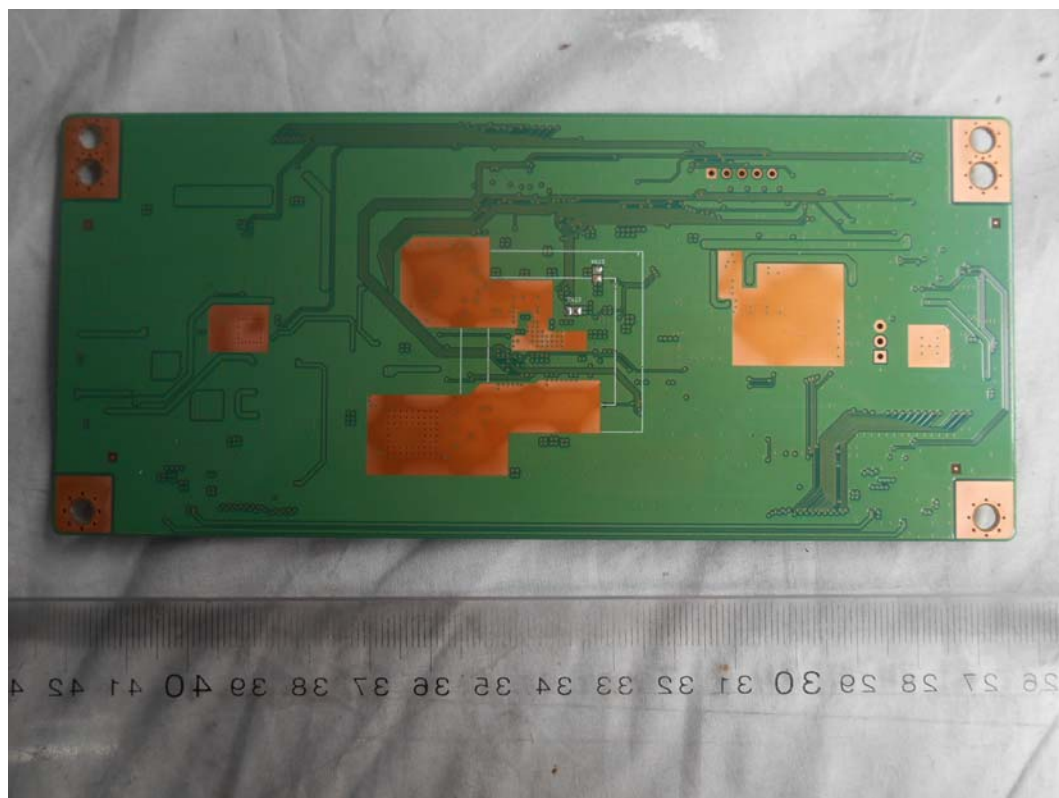
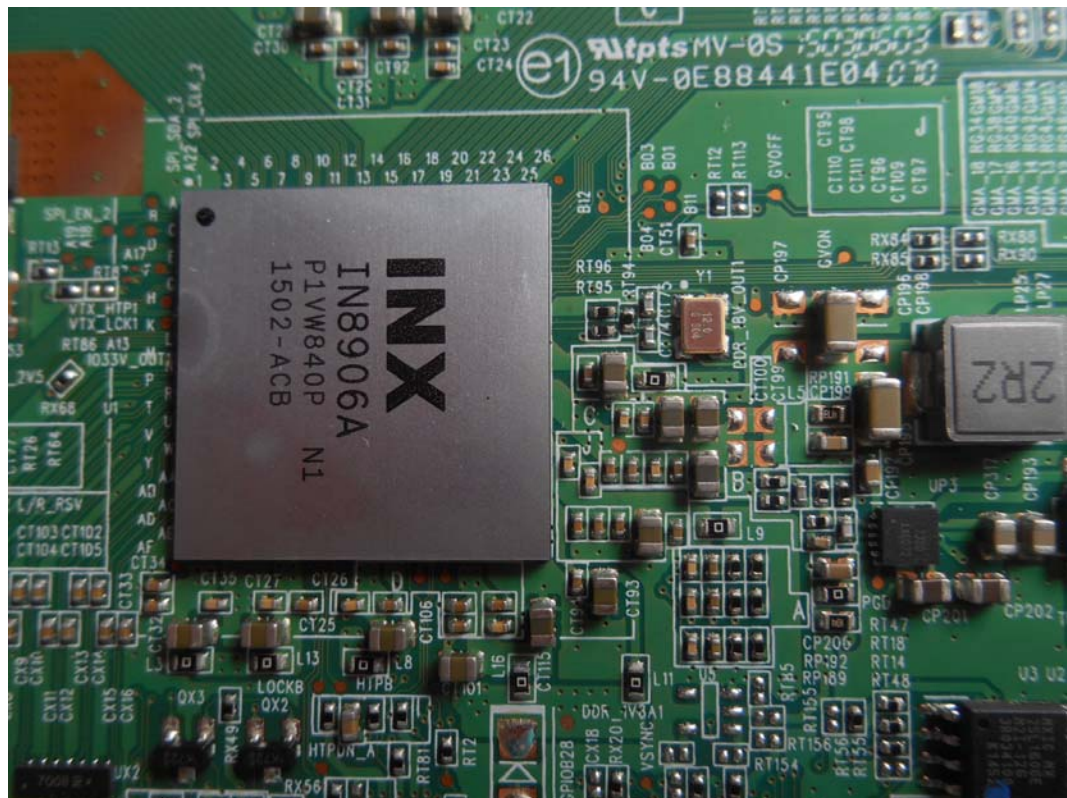


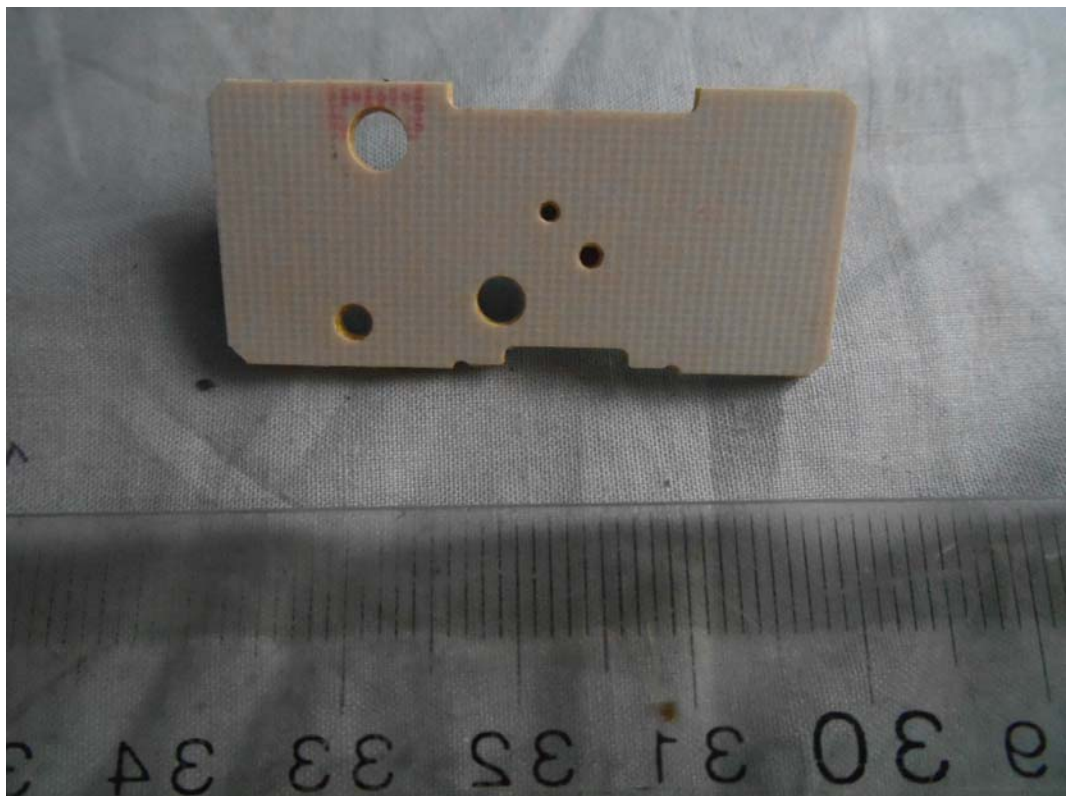
FIGURE 21  
LED LCD TV (M/N: 65H7B)  
CHIP AND CRYSTAL ON SIGNAL BOARD



*FIGURE 22*  
*LED LCD TV (M/N: 65H7B)*  
*KEY BOARD (COMPONENT SIDE)*

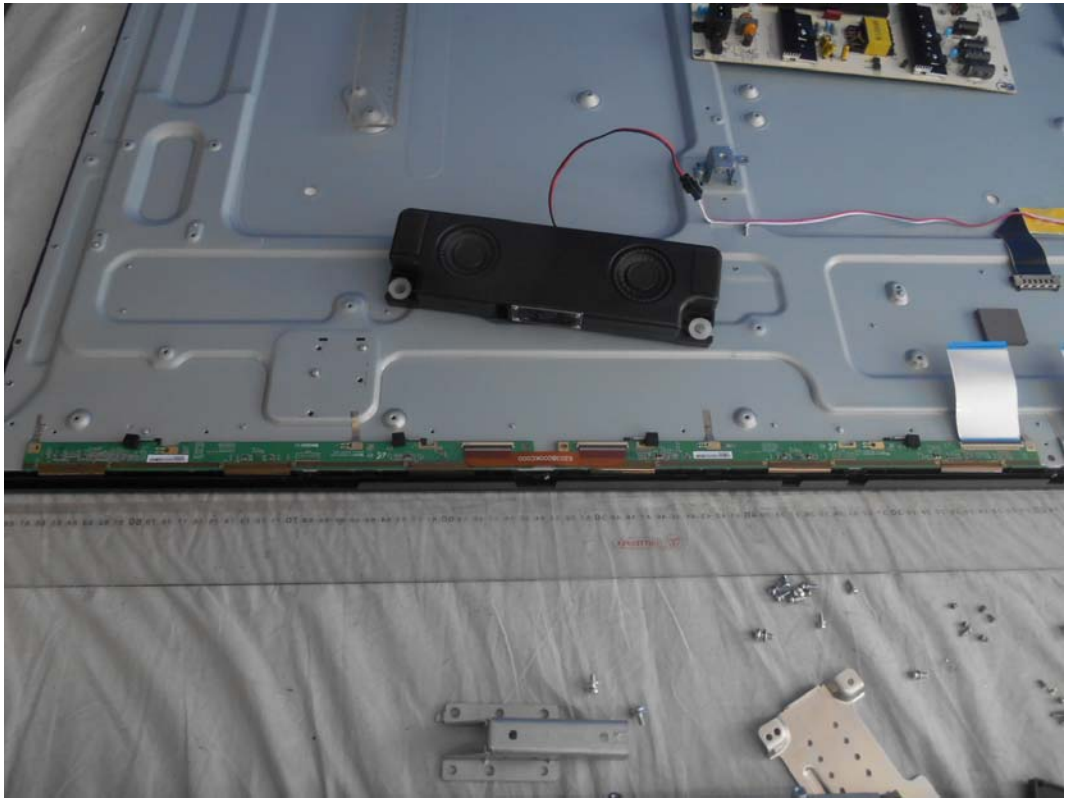


*FIGURE 23*  
*LED LCD TV (M/N: 65H7B)*  
*KEY BOARD (SOLDERED SIDE)*

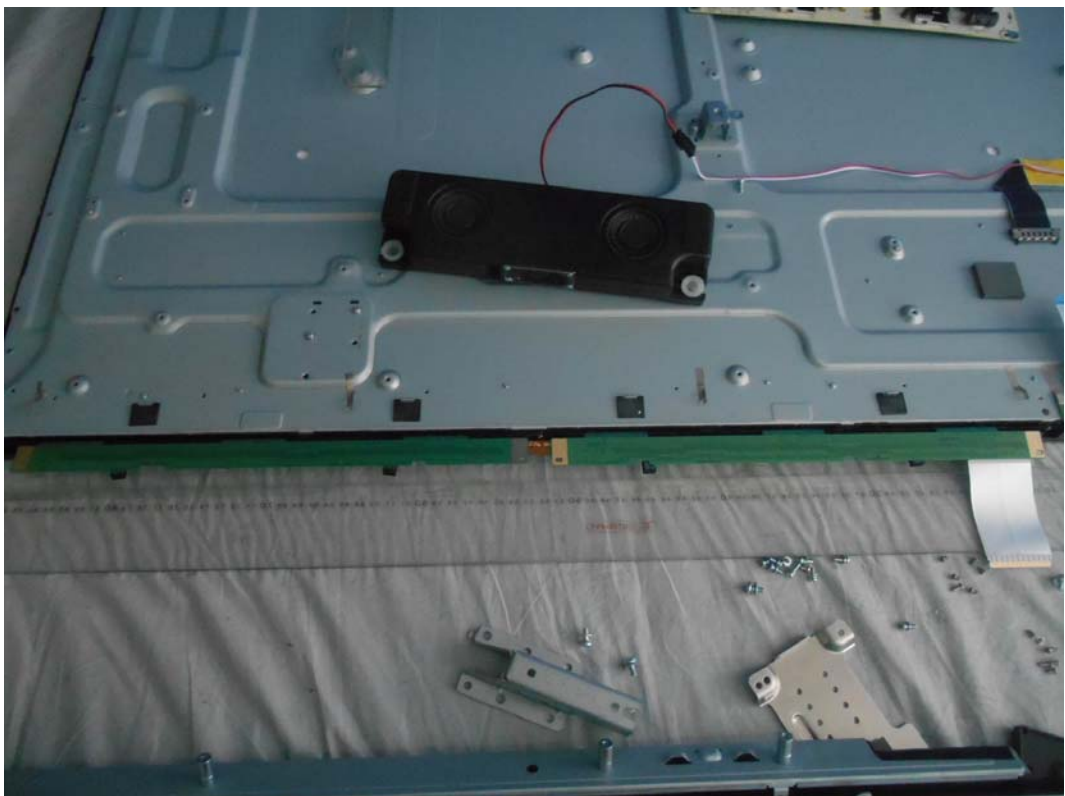




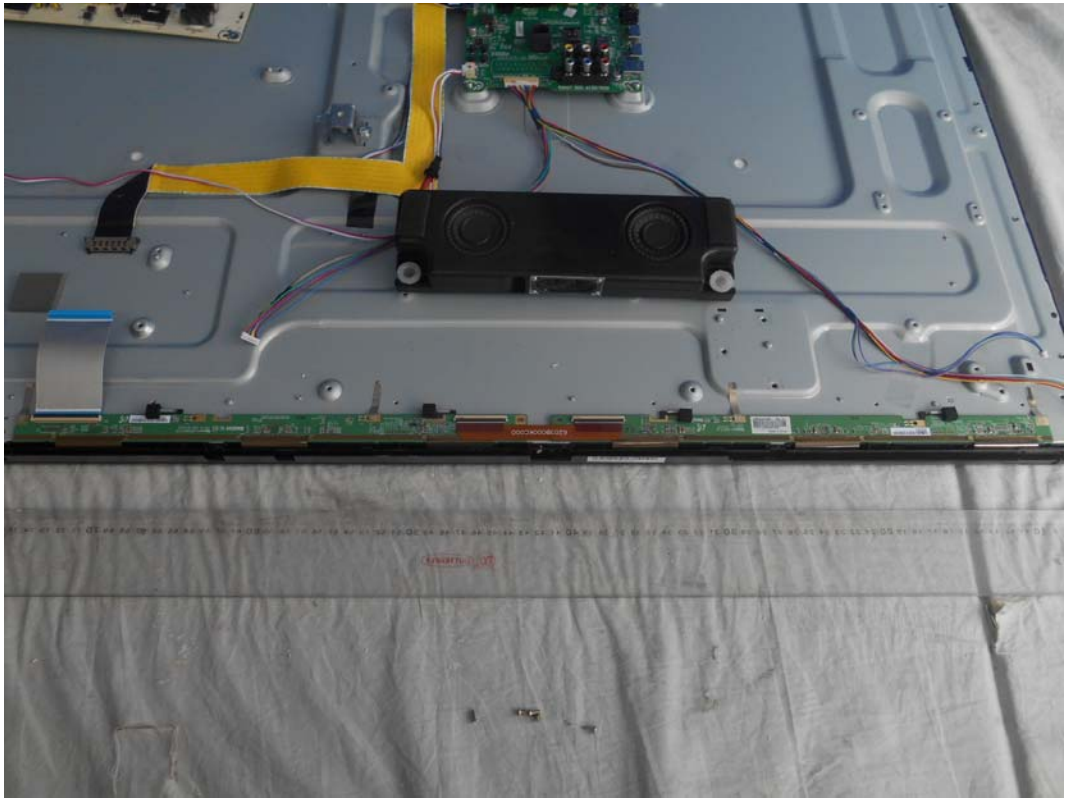
*FIGURE 24*  
*LED LCD TV (M/N: 65H7B)*  
*CONTROL BOARD #1 (COMPONENT SIDE)*



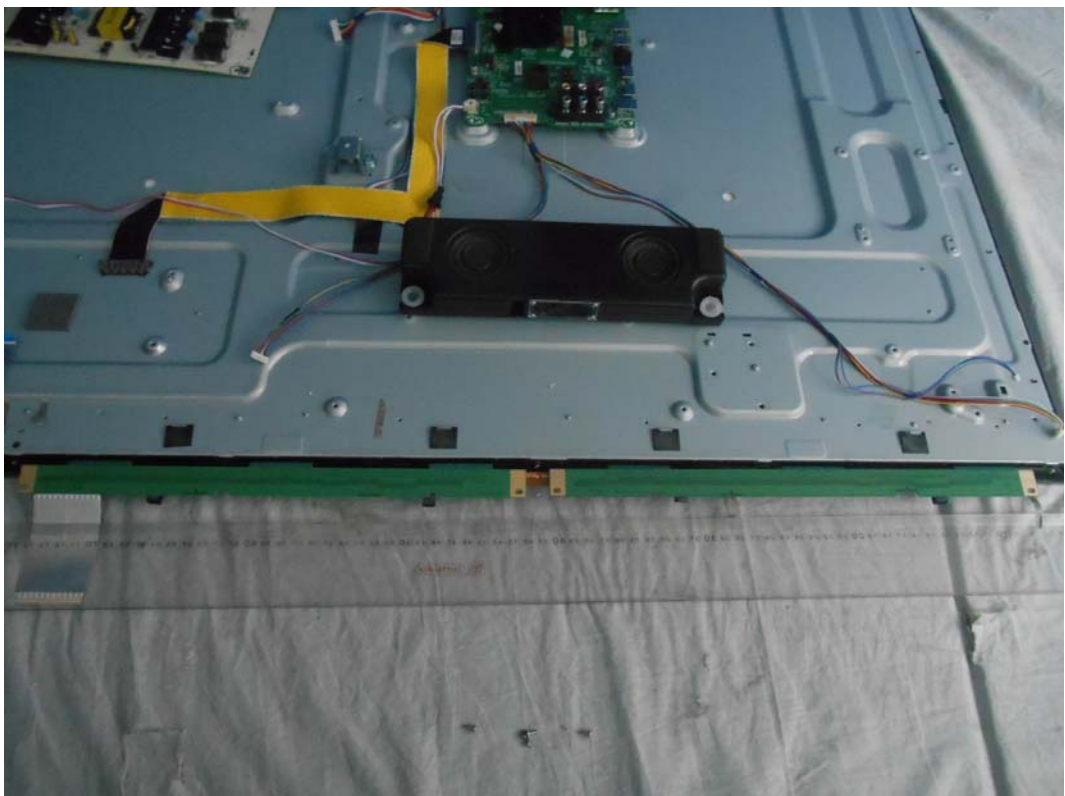
*FIGURE 25*  
*LED LCD TV (M/N: 65H7B)*  
*CONTROL BOARD #1 (SOLDERED SIDE)*



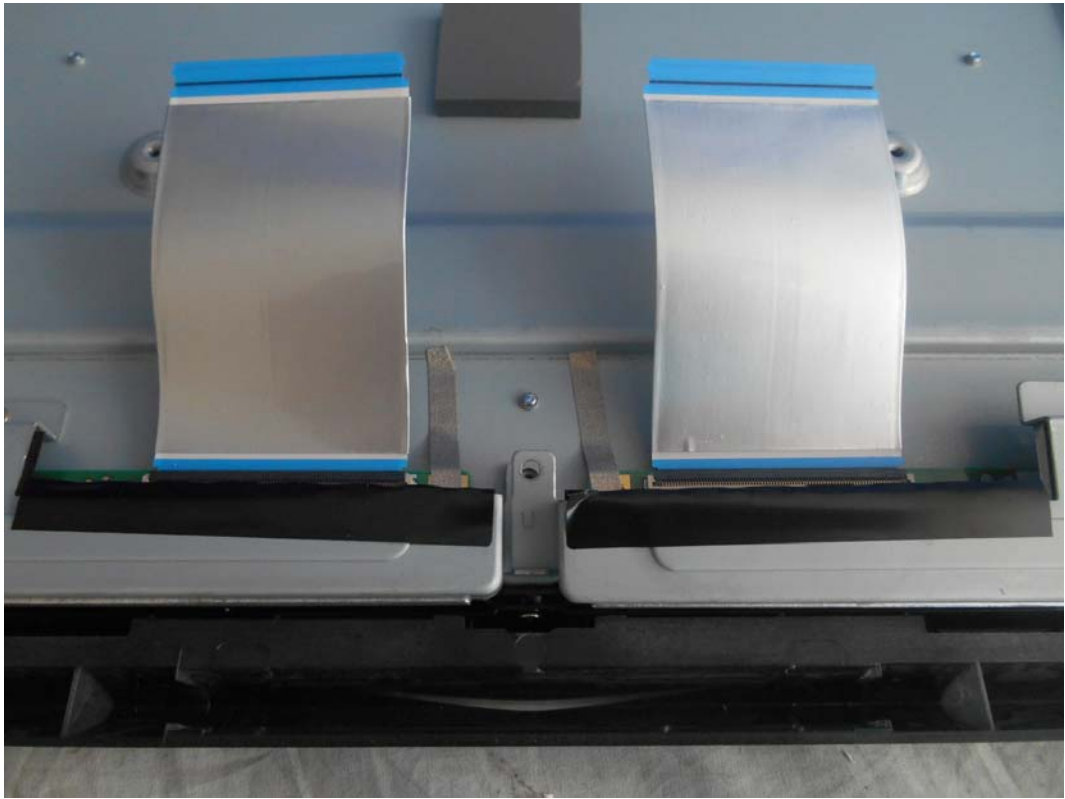
*FIGURE 26*  
*LED LCD TV (M/N: 65H7B)*  
*CONTROL BOARD #2 (COMPONENT SIDE)*



*FIGURE 27*  
*LED LCD TV (M/N: 65H7B)*  
*CONTROL BOARD #2 (SOLDERED SIDE)*



*FIGURE 28*  
*LED LCD TV (M/N: 65H7B)*  
*DEBUG #1*



*FIGURE 29*  
*LED LCD TV (M/N: 65H7B)*  
*DEBUG #2*





*FIGURE 30*  
*LED LCD TV (M/N: 65H7B)*  
*DEBUG #3*

