

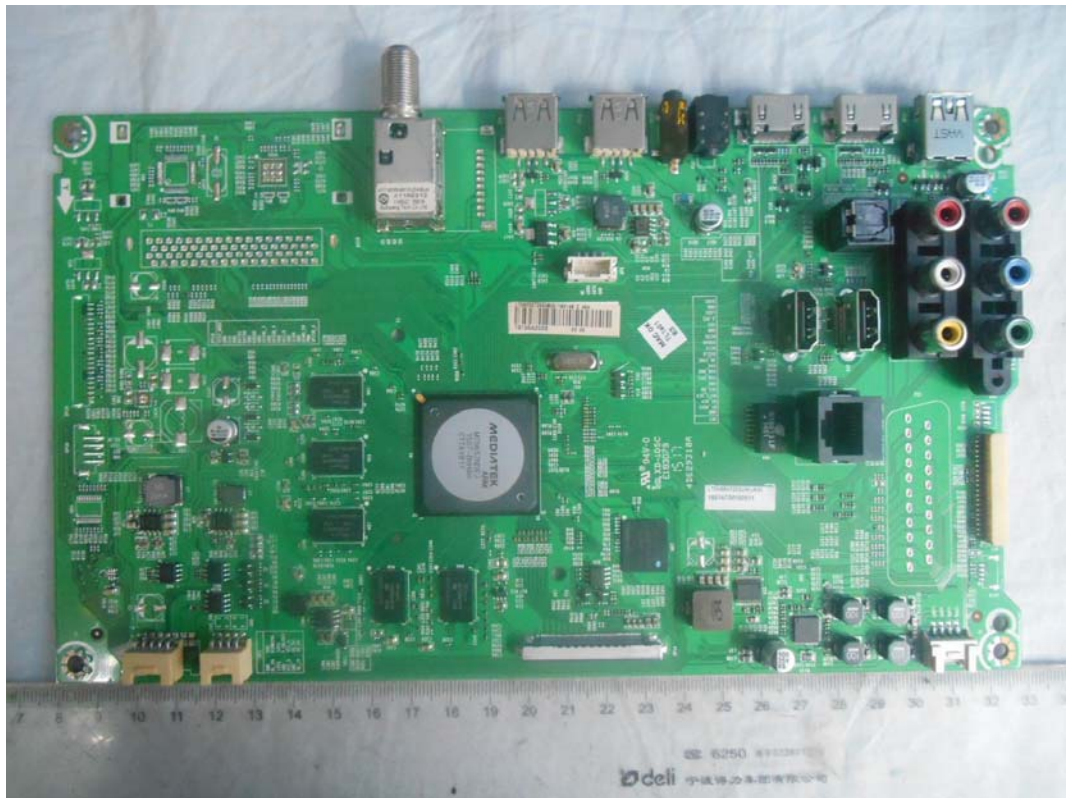
FIGURE 1
LED LCD TV (M/N: 55H9B)
COVER REMOVED



FIGURE 2
LED LCD TV (M/N: 55H9B)
LCD PANEL LABEL



*FIGURE 3
LED LCD TV (M/N: 55H9B)
MAIN BOARD (COMPONENT SIDE)*



*FIGURE 4
LED LCD TV (M/N: 55H9B)
MAIN BOARD (SOLDERED SIDE)*

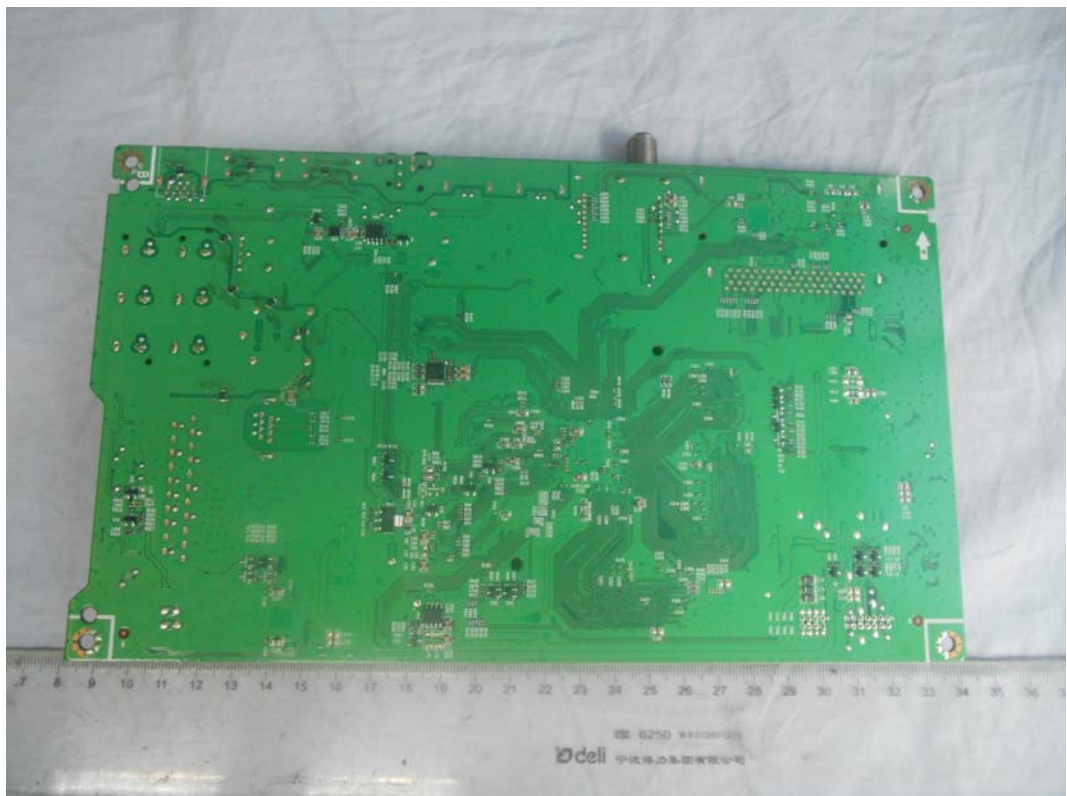


FIGURE 7
LED LCD TV (M/N: 55H9B)
TUNER

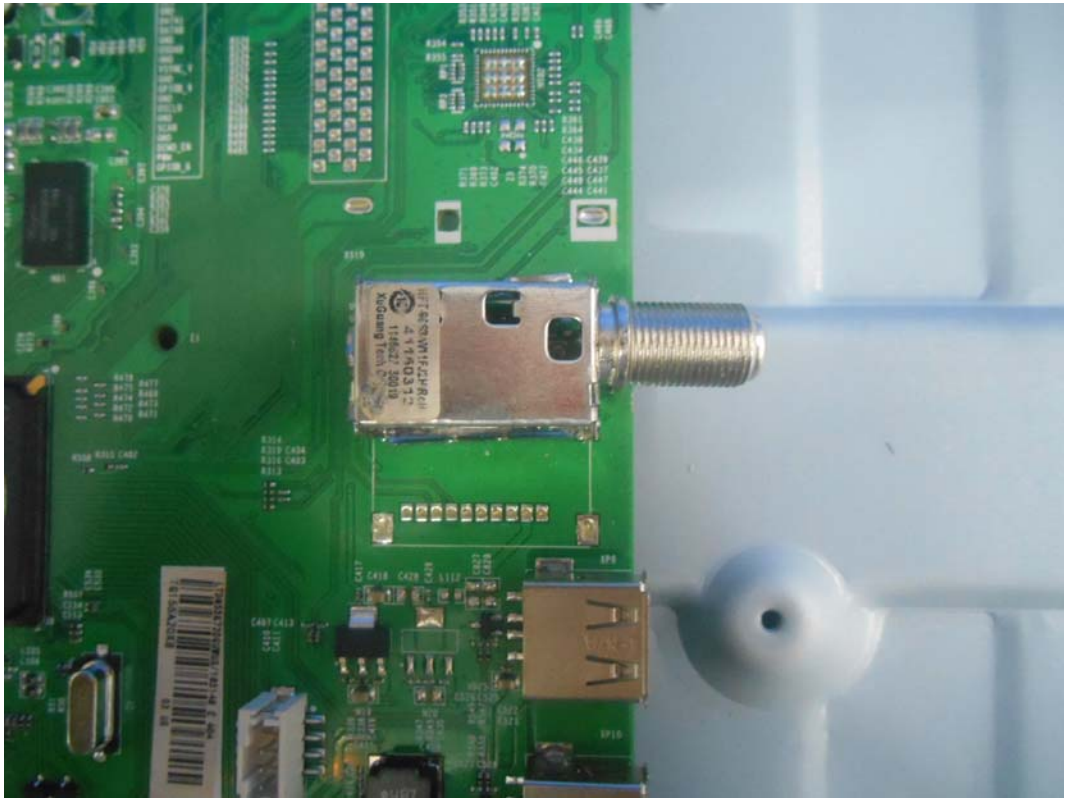


FIGURE 8
LED LCD TV (M/N: 55H9B)
TUNER LABEL



FIGURE 9
LED LCD TV (M/N: 55H9B)
TUNER BOARD (COMPONENT SIDE)

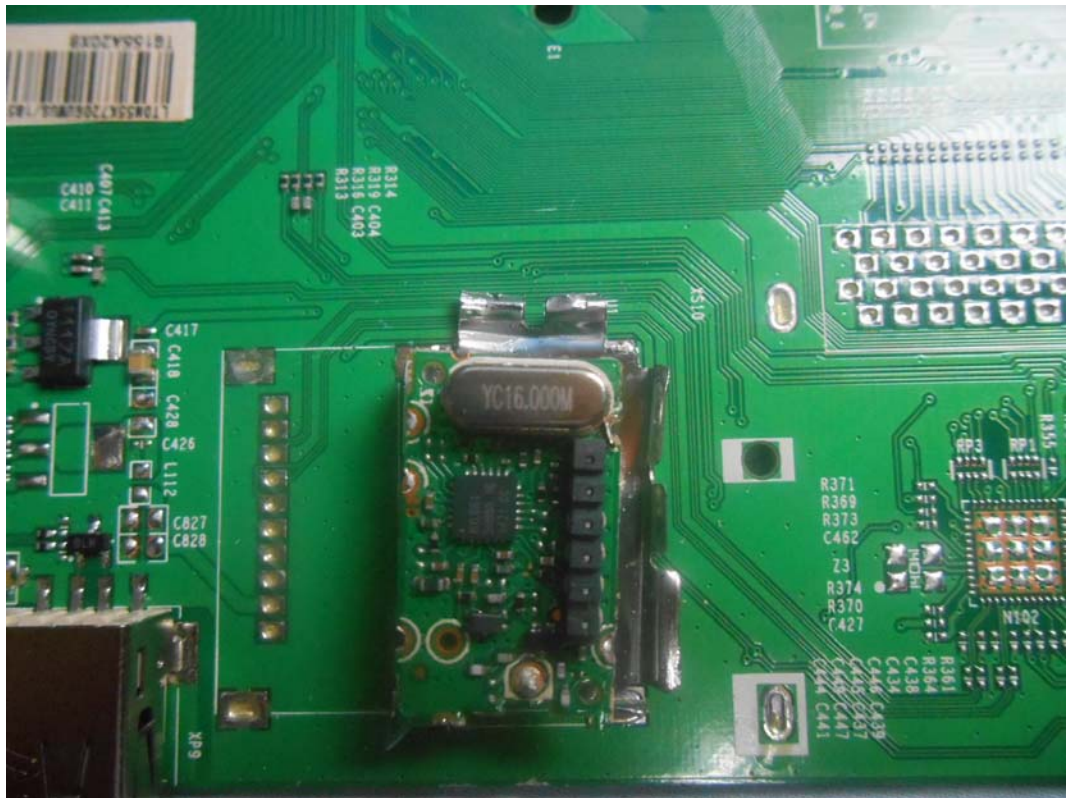


FIGURE 10
LED LCD TV (M/N: 55H9B)
POWER BOARD (COMPONENT SIDE)

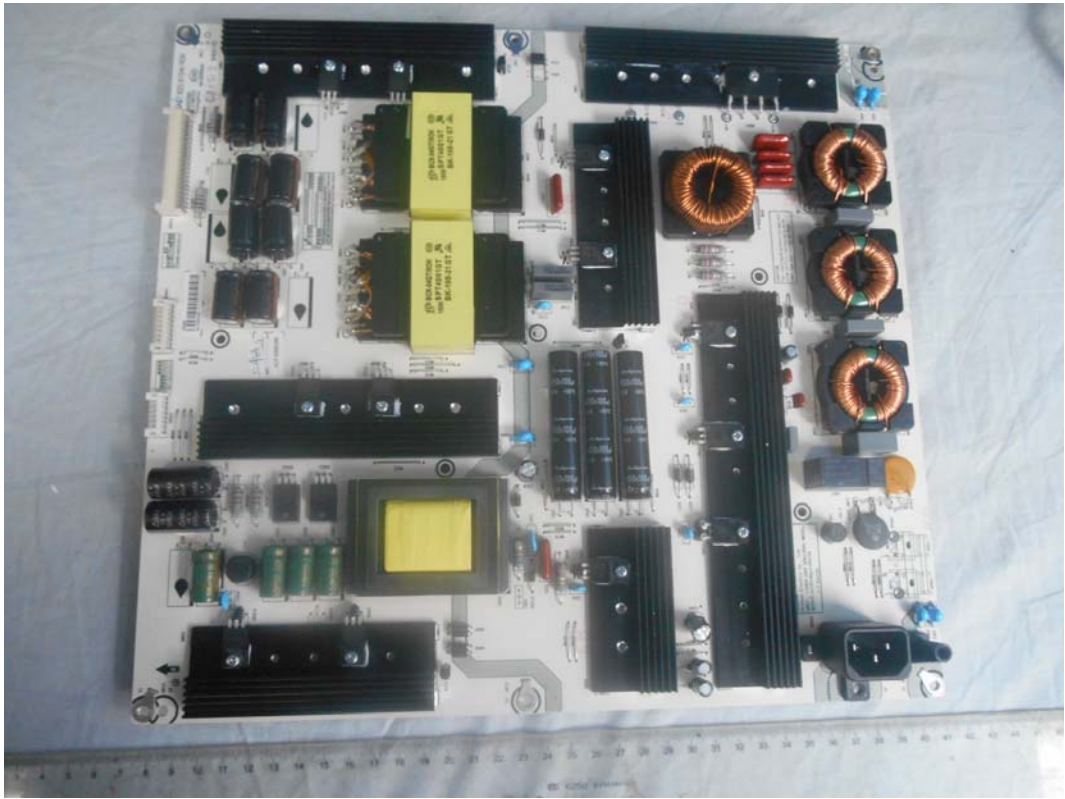


FIGURE 11
LED LCD TV (M/N: 55H9B)
POWER BOARD (SOLDERED SIDE)

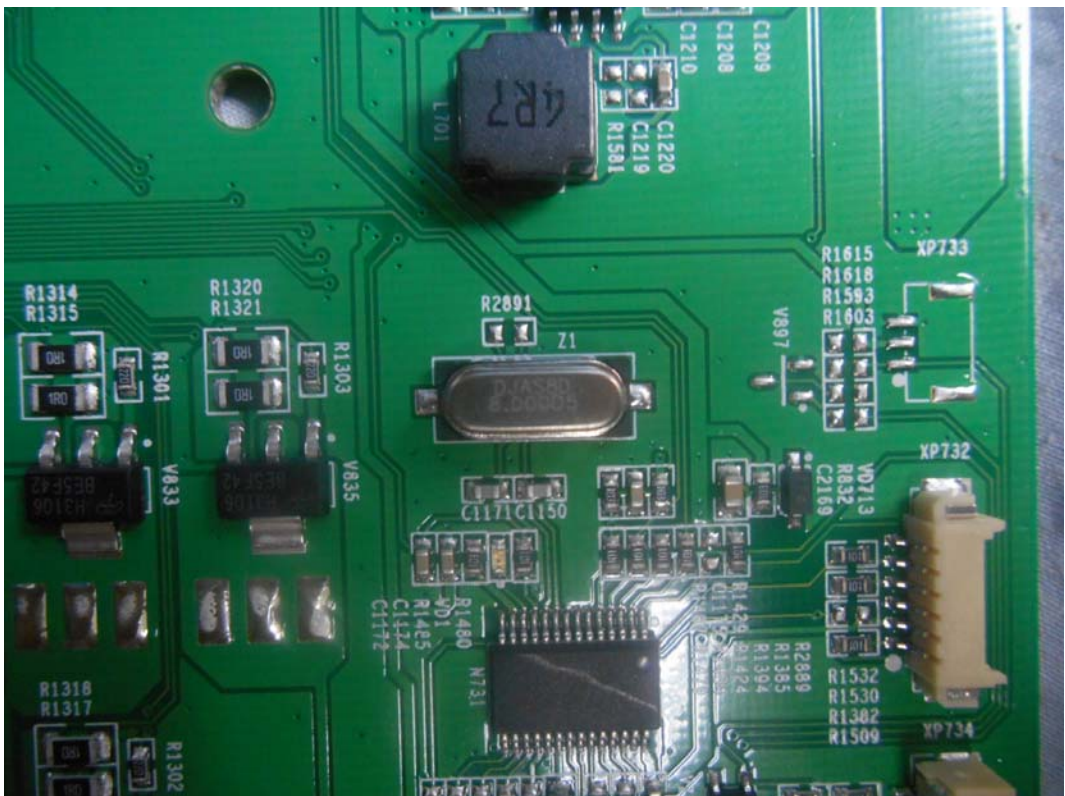


FIGURE 12
LED LCD TV (M/N: 55H9B)
RF BOARD (COMPONENT SIDE)



FIGURE 13
LED LCD TV (M/N: 55H9B)
RF BOARD (SOLDERED SIDE)



FIGURE 14
LED LCD TV (M/N: 55H9B)
RF BOARD LABEL



FIGURE 15
LED LCD TV (M/N: 55H9B)
SHIELDED REMOVED



*FIGURE 16
LED LCD TV (M/N: 55H9B)
SIGNAL BOARD #1 (COMPONENT SIDE)*



*FIGURE 17
LED LCD TV (M/N: 55H9B)
SIGNAL BOARD #1 (SOLDERED SIDE)*

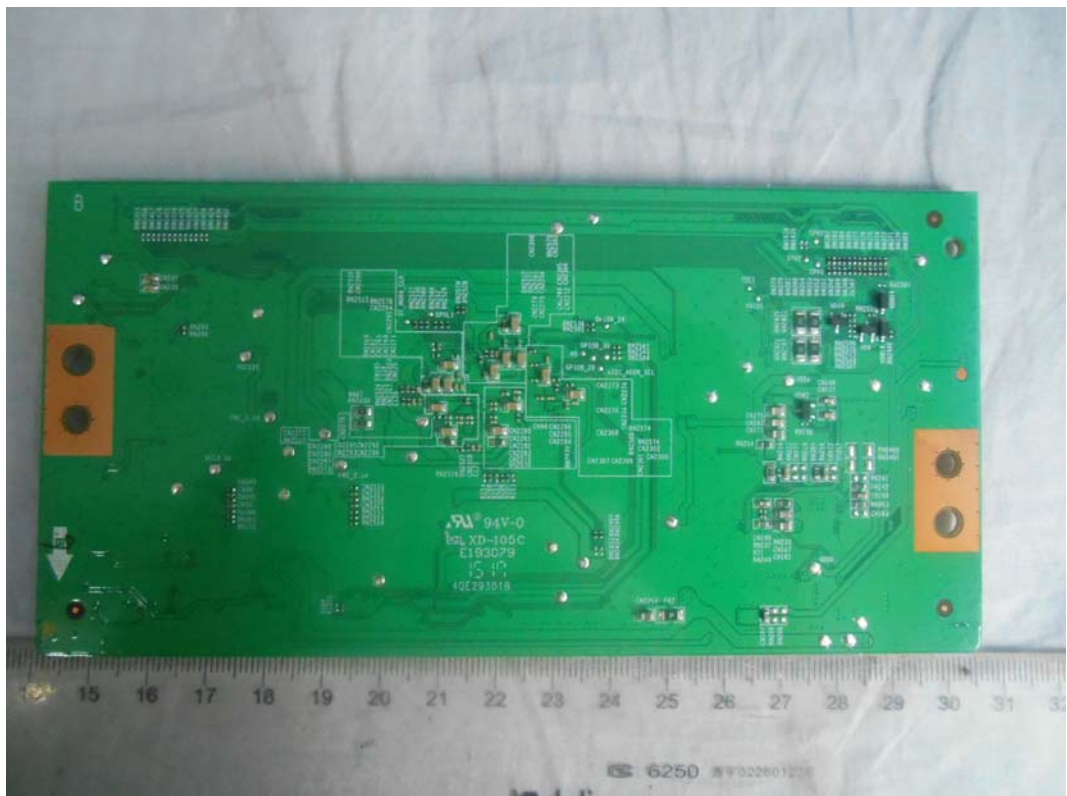


FIGURE 18
LED LCD TV (M/N: 55H9B)
CHIP ON SIGNAL BOARD #1



FIGURE 19
LED LCD TV (M/N: 55H9B)
SIGNAL BOARD #2 (COMPONENT SIDE)



FIGURE 20
LED LCD TV (M/N: 55H9B)
SIGNAL BOARD #2 (COMPONENT SIDE)

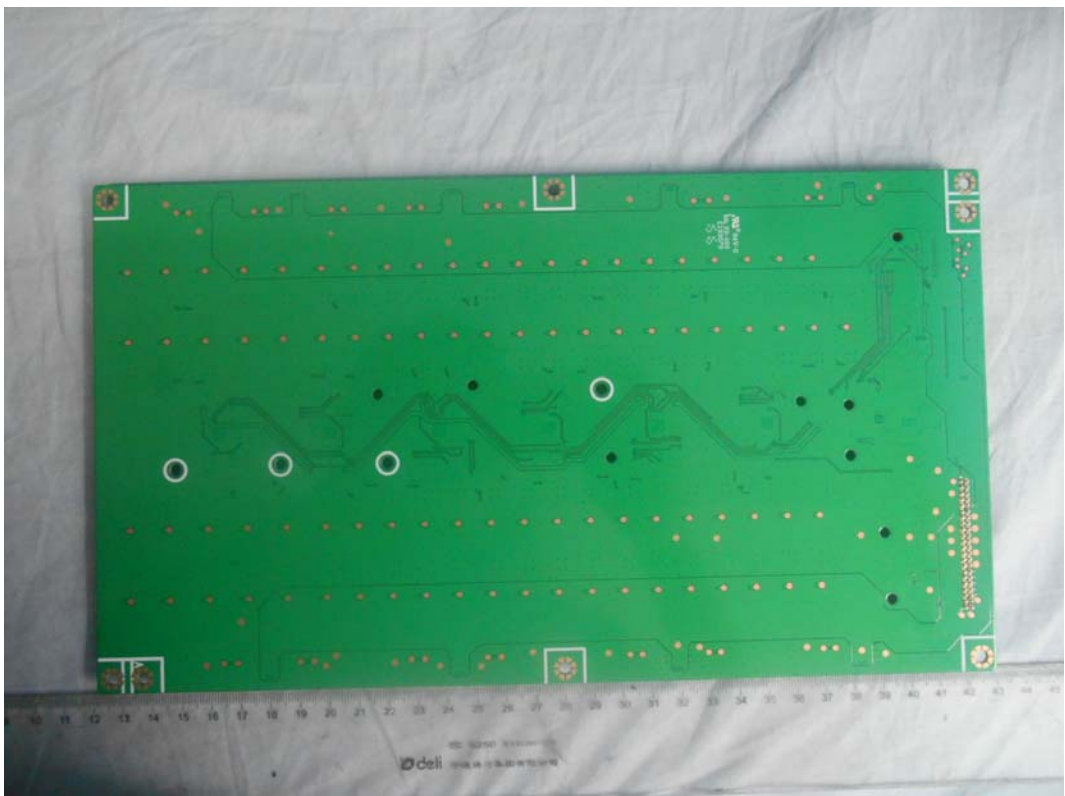


FIGURE 21
LED LCD TV (M/N: 55H9B)
CRYSTAL ON SIGNAL BOARD #2

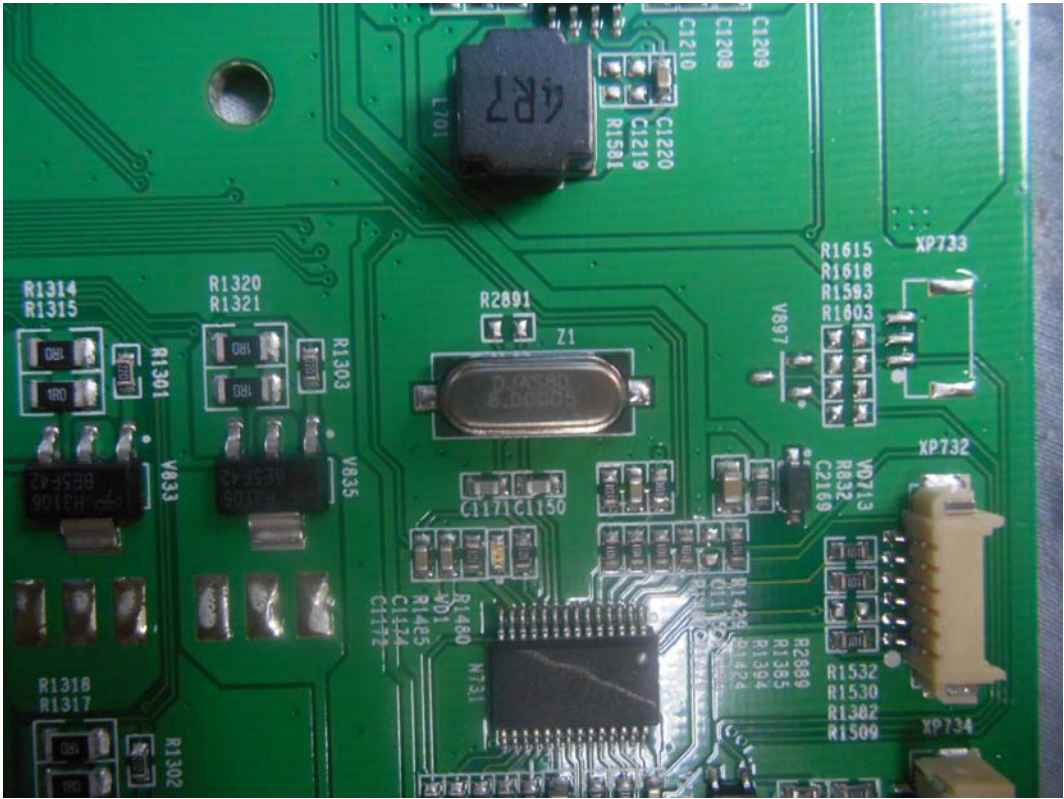


FIGURE 22
LED LCD TV (M/N: 55H9B)
IR BOARD (COMPONENT SIDE)

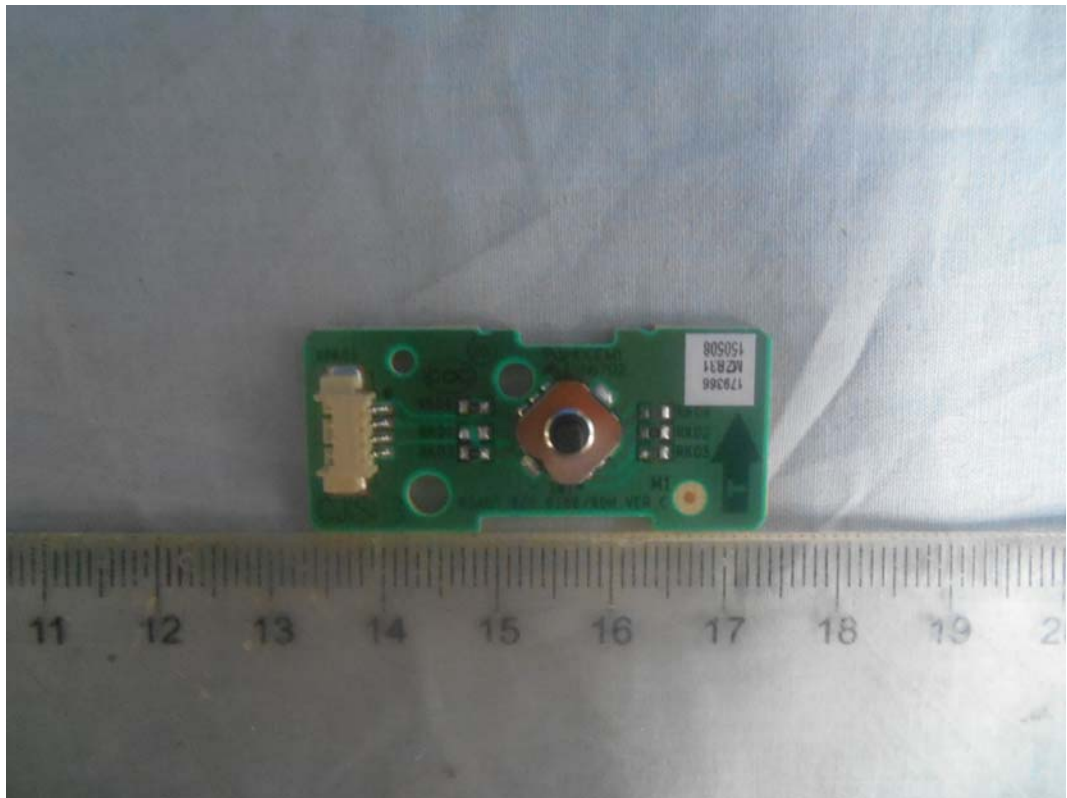


FIGURE 23
LED LCD TV (M/N: 55H9B)
IR BOARD (COMPONENT SIDE)



FIGURE 24
LED LCD TV (M/N: 55H9B)
SPEAKER



FIGURE 25
LED LCD TV (M/N: 55H9B)
SPEAKER



FIGURE 26
LED LCD TV (M/N: 55H9B)
GENERAL APPEARANCE #2

