

FIGURE 1
LED LCD TV (M/N: LTDN50D36US)
COVER REMOVED #1



FIGURE 2
LED LCD TV (M/N: LTDN50D36US)
LCD PANEL LABEL

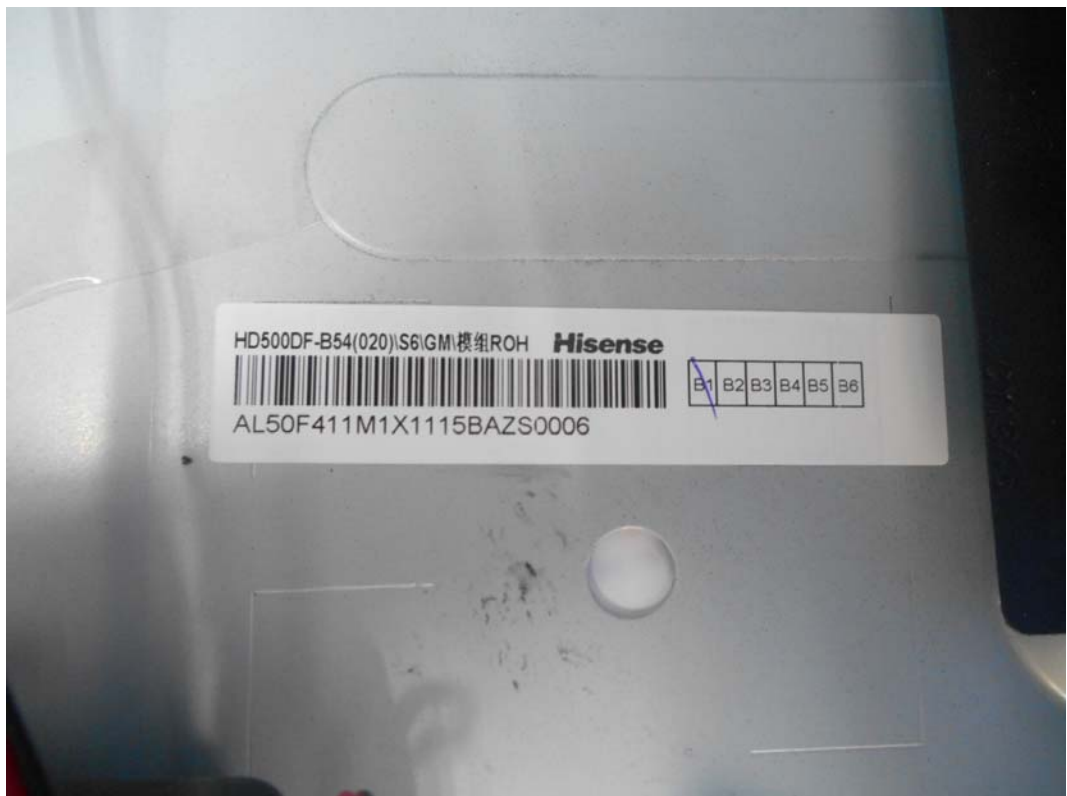


FIGURE 3
LED LCD TV (M/N: LTDN50D36US)
MAIN BOARD (COMPONENT SIDE)



FIGURE 4
LED LCD TV (M/N: LTDN50D36US)
MAIN BOARD (SOLDERED SIDE)



FIGURE 5
LED LCD TV (M/N: LTDN50D36US)
CHIP & CRYSTAL ON MAIN BOARD

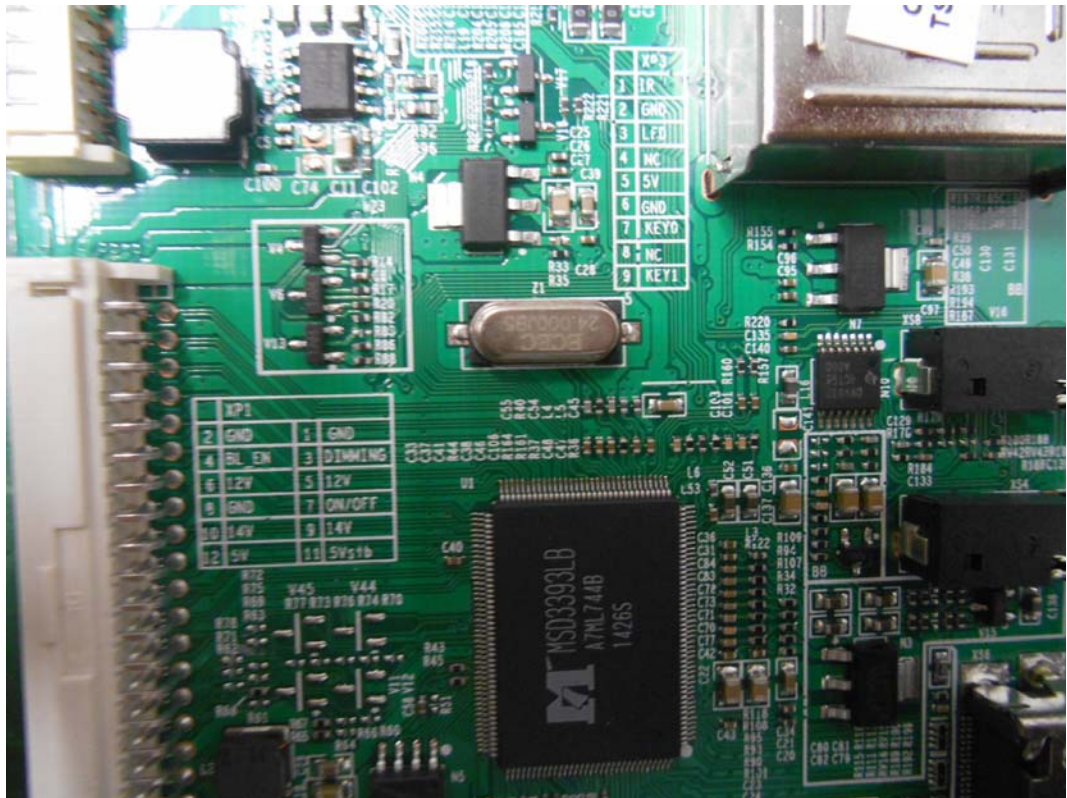


FIGURE 6
LED LCD TV (M/N: LTDN50D36US)
TUNER ON MAIN BOARD

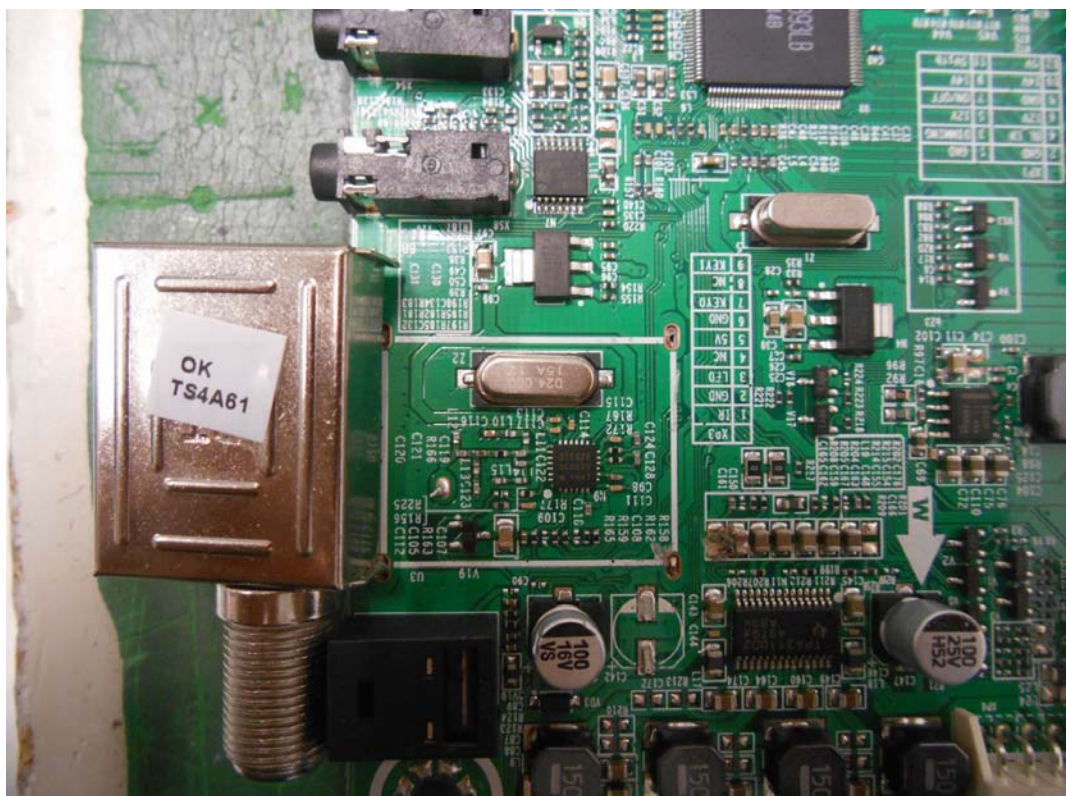


FIGURE 7
LED LCD TV (M/N: LTDN50D36US)
POWER BOARD (COMPONENT SIDE)

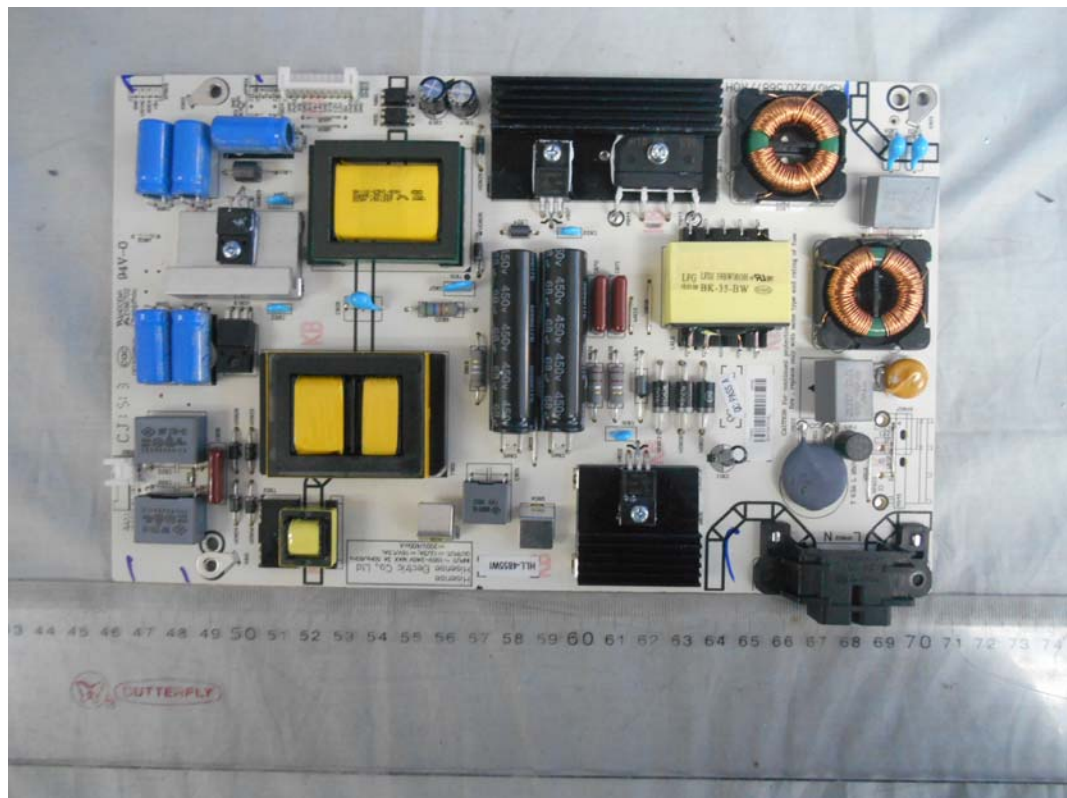


FIGURE 8
LED LCD TV (M/N: LTDN50D36US)
POWER BOARD (SOLDERED SIDE)

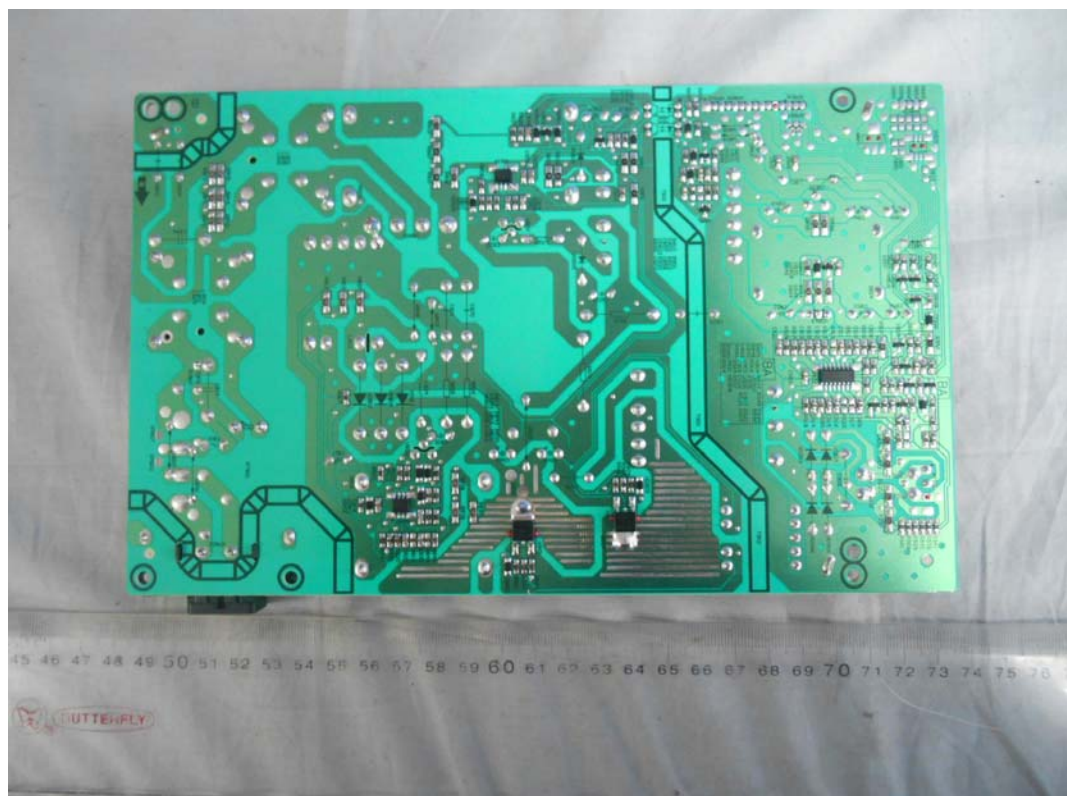


FIGURE 9
LED LCD TV (M/N: LTDN50D36US)
SIGNAL BOARD (COMPONENT SIDE)

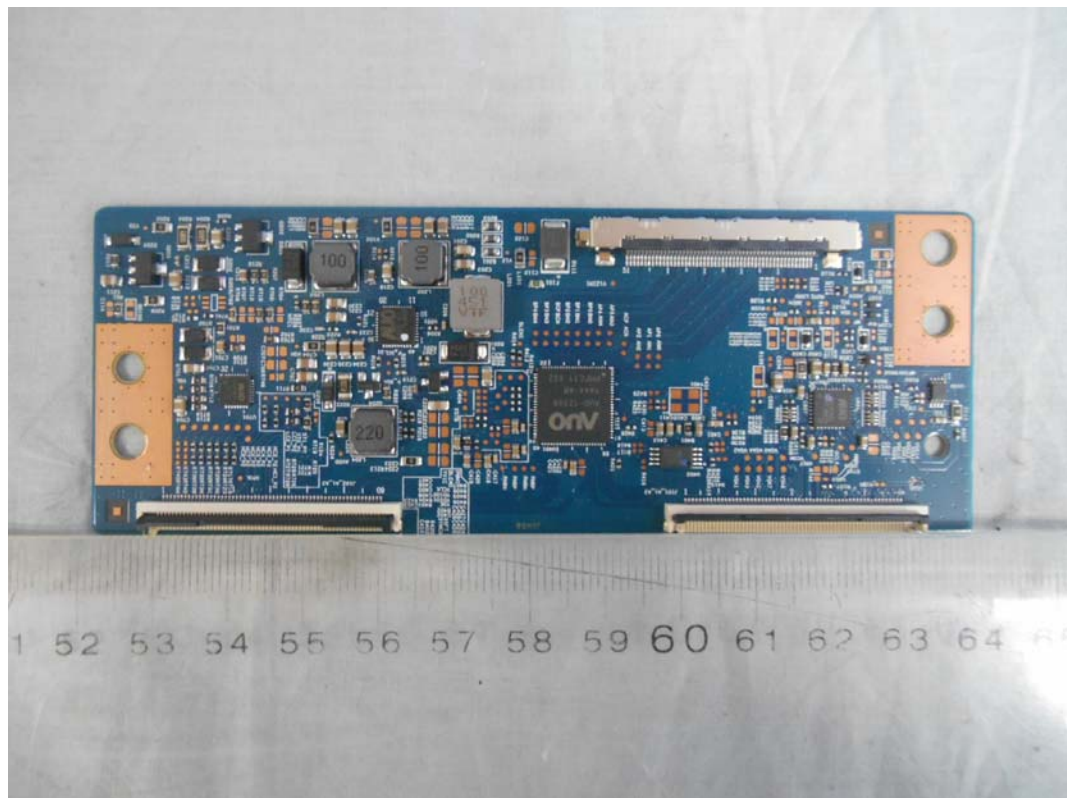


FIGURE 10
LED LCD TV (M/N: LTDN50D36US)
SIGNAL BOARD (SOLDERED SIDE)

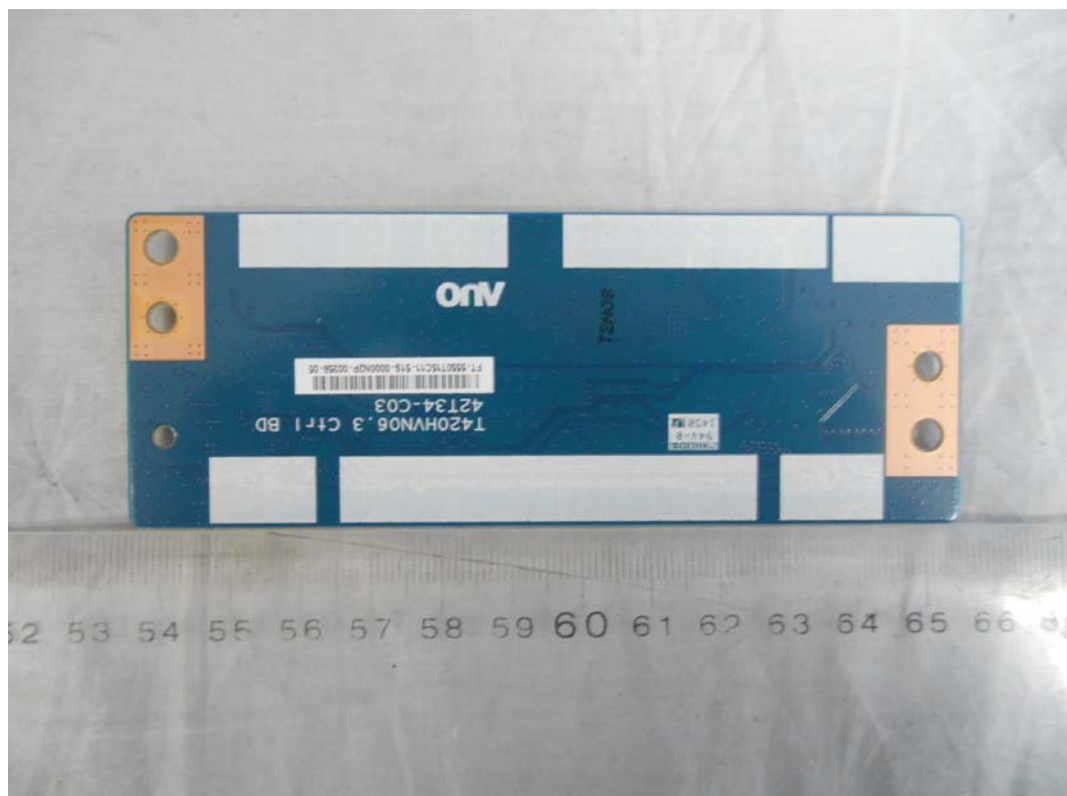


FIGURE 11
LED LCD TV (M/N: LTDN50D36US)
KEY BOARD (COMPONENT SIDE)

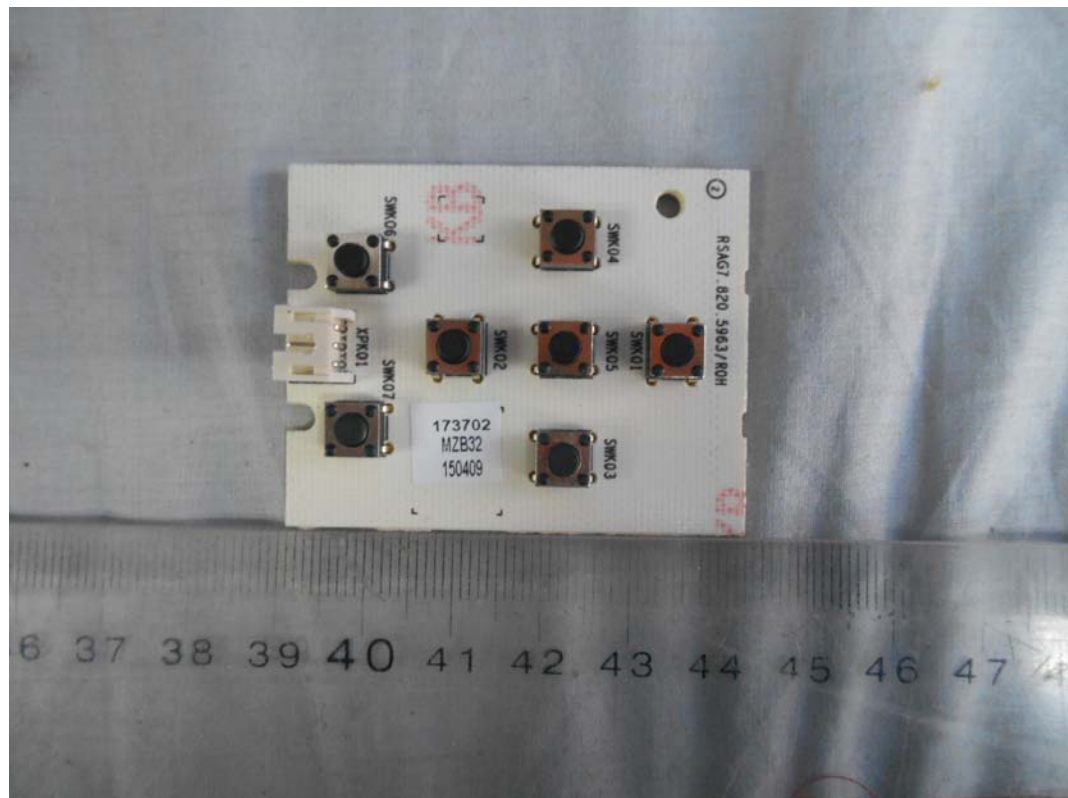


FIGURE 12
LED LCD TV (M/N: LTDN50D36US)
KEY BOARD (SOLDERED SIDE)

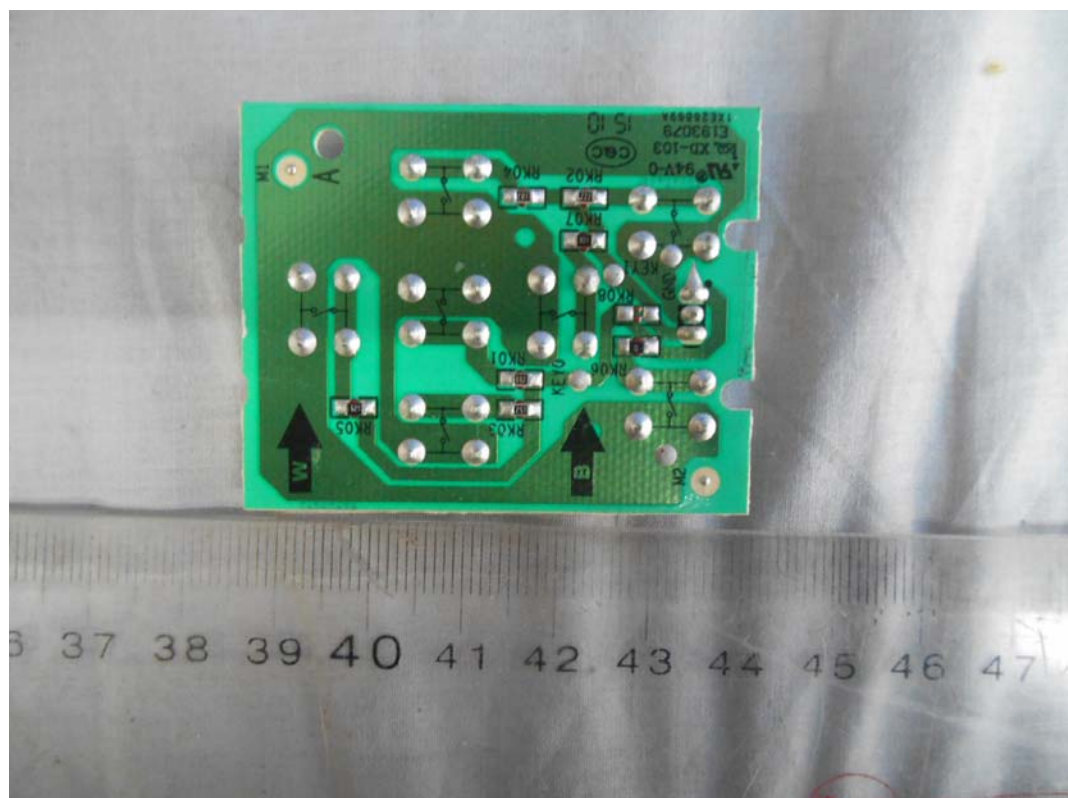


FIGURE 13
LED LCD TV (M/N: LTDN50D36US)
CONTROL BOARD #1 (COMPONENT SIDE)



FIGURE 14
LED LCD TV (M/N: LTDN50D36US)
CONTROL BOARD #2 (COMPONENT SIDE)



FIGURE 15
LED LCD TV (M/N: LTDN50D36US)
CONTROL BOARD #1 (SOLDERED SIDE)

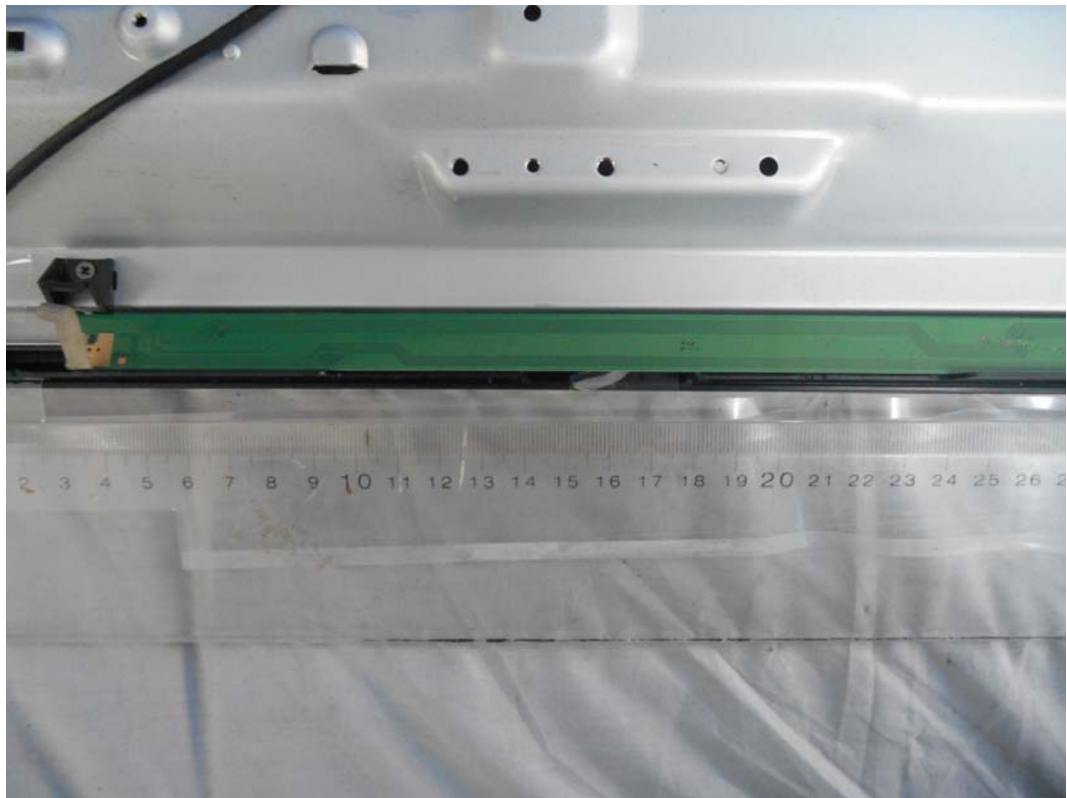


FIGURE 16
LED LCD TV (M/N: LTDN50D36US)
CONTROL BOARD #2 (SOLDERED SIDE)

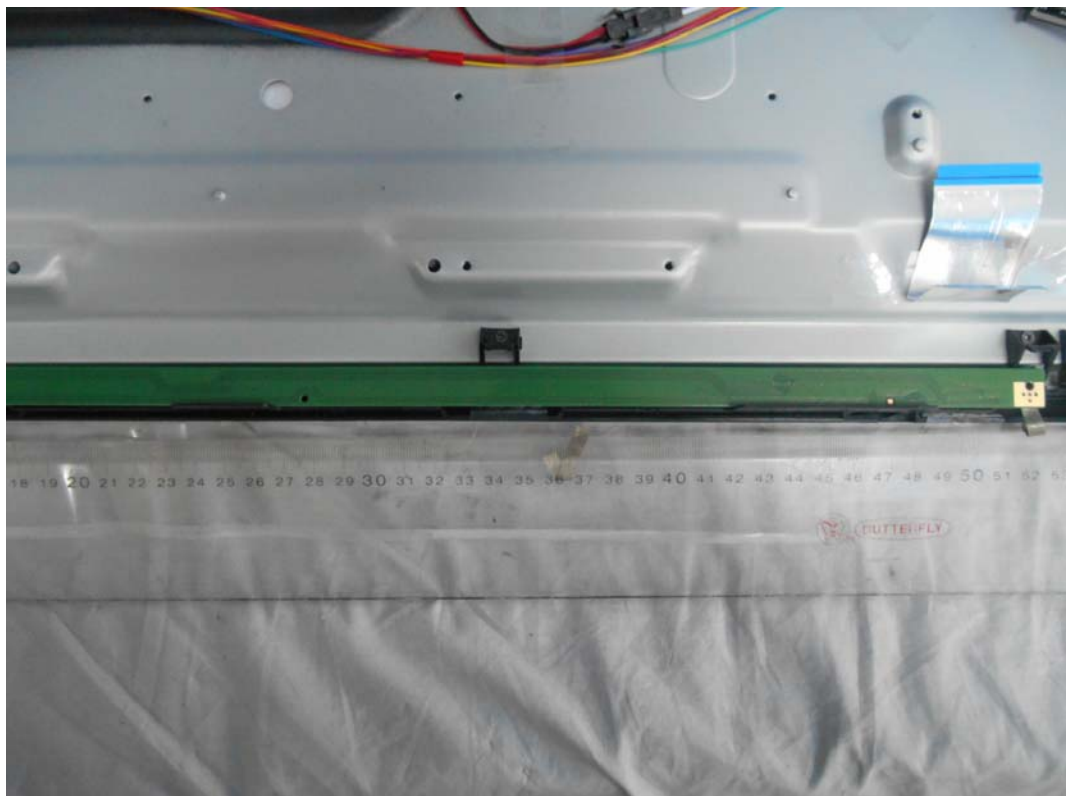


FIGURE 17
LED LCD TV (M/N: LTDN50D36US)
DEBUG #1



FIGURE 18
LED LCD TV (M/N: LTDN50D36US)
DEBUG #2

