

FIGURE 1
LED LCD TV (M/N: 50CU6000)
COVER REMOVED



FIGURE 2
LED LCD TV (M/N: 50CU6000)
PANEL LABEL



*FIGURE 3
LED LCD TV (M/N: 50CU6000)
PANEL BOARD (COMPONENT SIDE)*



*FIGURE 4
LED LCD TV (M/N: 50CU6000)
PANEL BOARD (SOLDERED SIDE)*



FIGURE 5
LED LCD TV (M/N: 50CU6000)
CHIP & CRYSTAL ON PANEL BOARD



FIGURE 6
LED LCD TV (M/N: 50CU6000)
KEY BOARD (COMPONENT SIDE)

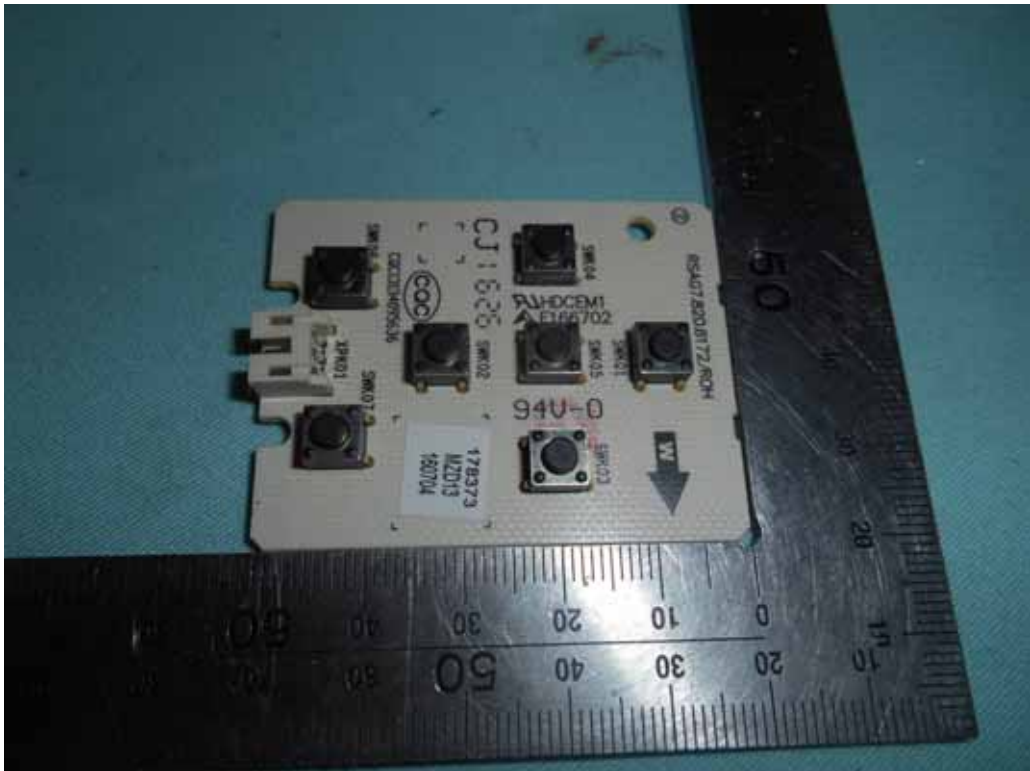


FIGURE 7
LED LCD TV (M/N: 50CU6000)
KEY BOARD (SOLDERED SIDE)

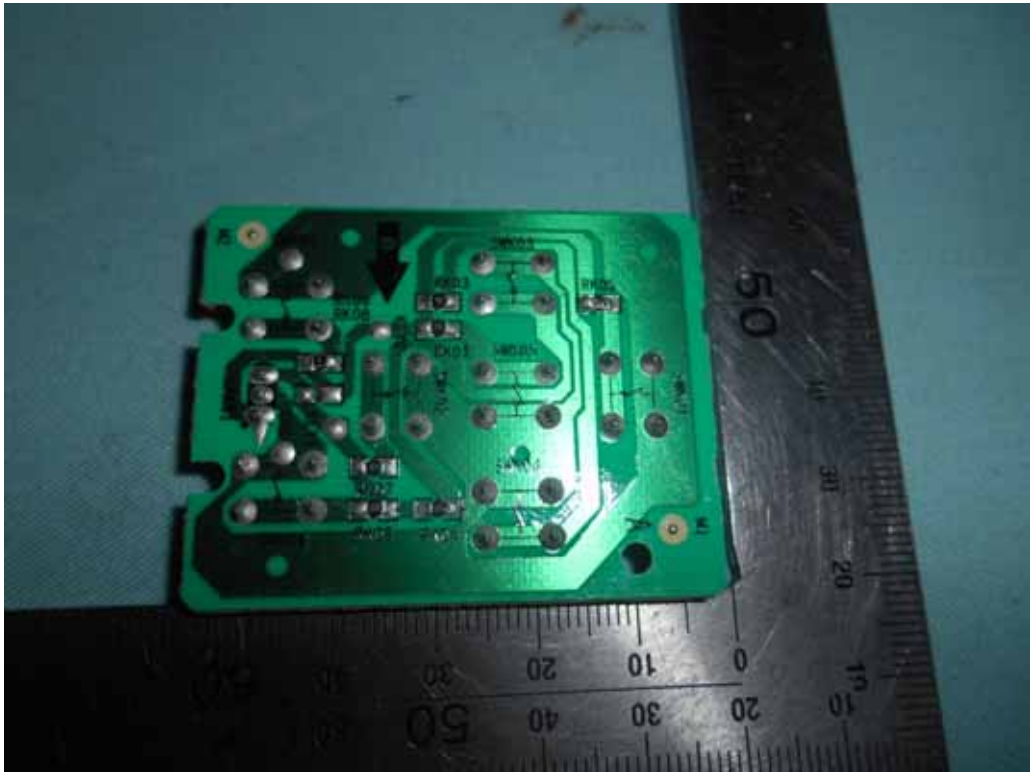


FIGURE 8
LED LCD TV (M/N: 50CU6000)
IR BOARD (COMPONENT SIDE)

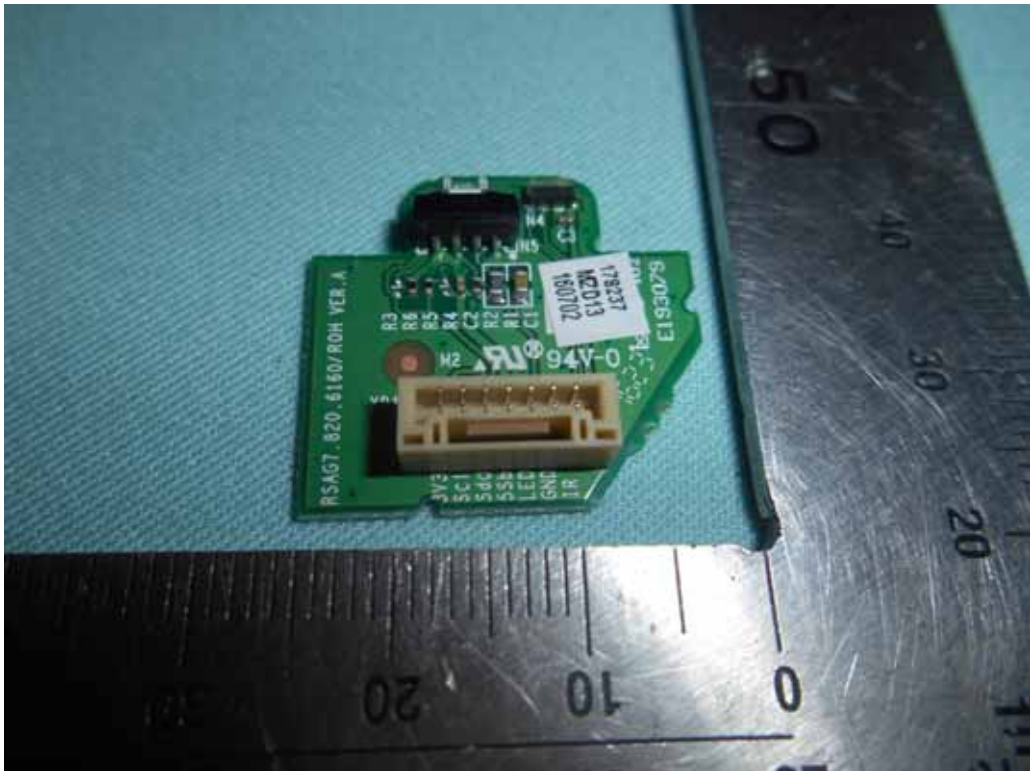


FIGURE 9
LED LCD TV (M/N: 50CU6000)
IR BOARD (SOLDERED SIDE)

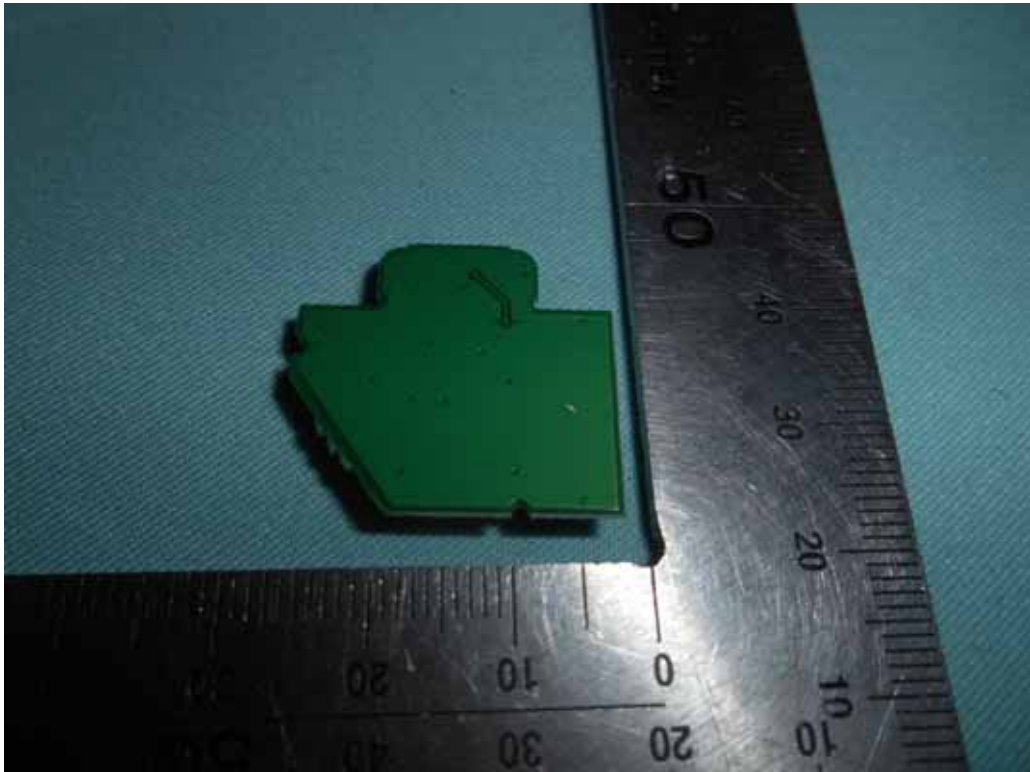


FIGURE 10
LED LCD TV (M/N: 50CU6000)
POWER BOARD (COMPONENT SIDE)

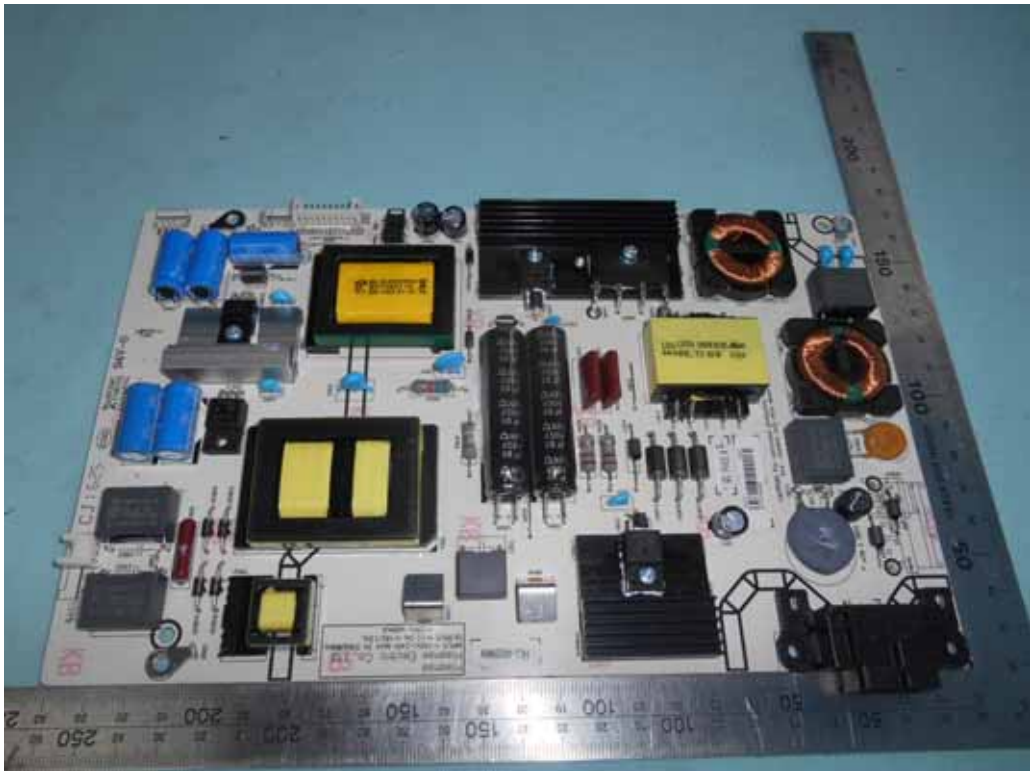


FIGURE 11
LED LCD TV (M/N: 50CU6000)
POWER BOARD (SOLDERED SIDE)

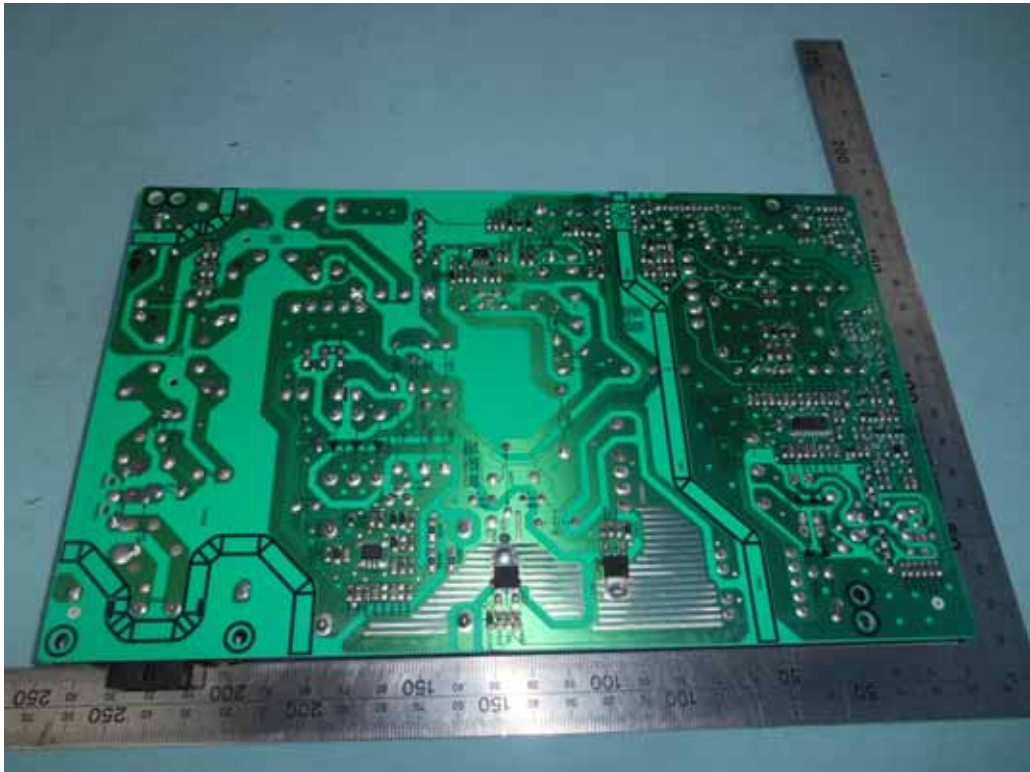


FIGURE 12
LED LCD TV (M/N: 50CU6000)
MAIN BOARD (COMPONENT SIDE)



FIGURE 13
LED LCD TV (M/N: 50CU6000)
MAIN BOARD (SOLDERED SIDE)



FIGURE 14
LED LCD TV (M/N: 50CU6000)
CHIP & CRYSTAL ON MAIN BOARD



FIGURE 15
LED LCD TV (M/N: 50CU6000)
TUNER BOARD (COMPONENT SIDE)



FIGURE 16
LED LCD TV (M/N: 50CU6000)
TUNER BOARD (SOLDERED SIDE)

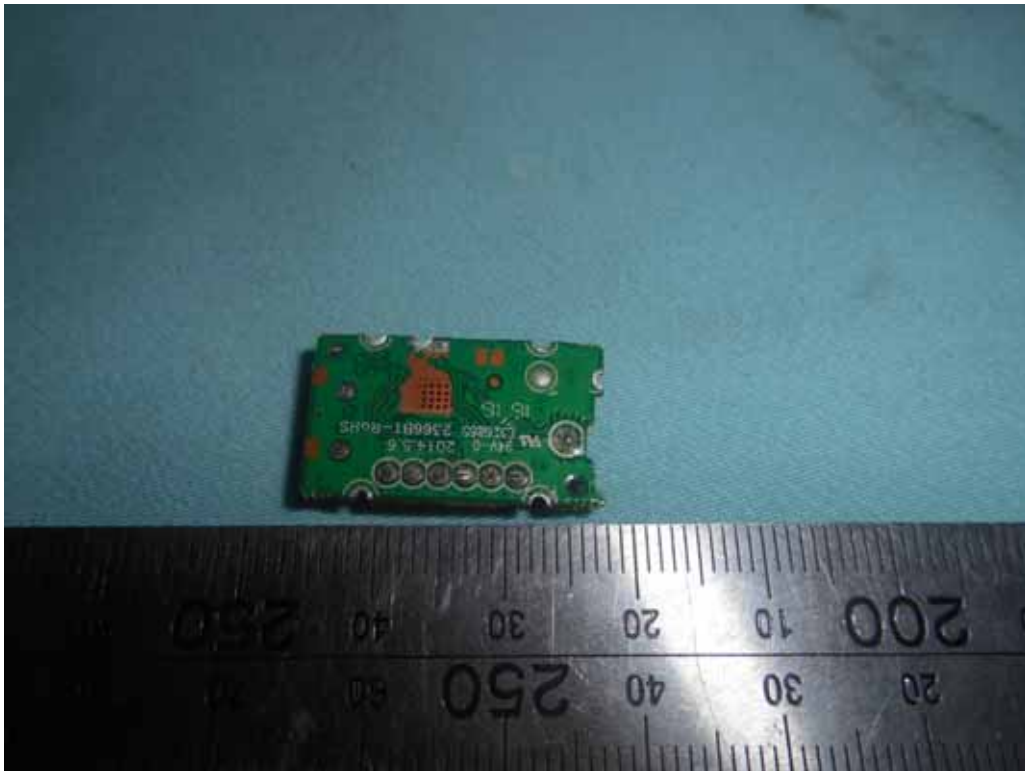


FIGURE 17
LED LCD TV (M/N: 50CU6000)
TUNER



FIGURE 18
LED LCD TV (M/N: 50CU6000)
RF BOARD (COMPONENT SIDE)



FIGURE 19
LED LCD TV (M/N: 50CU6000)
RF BOARD (SOLDERED SIDE)

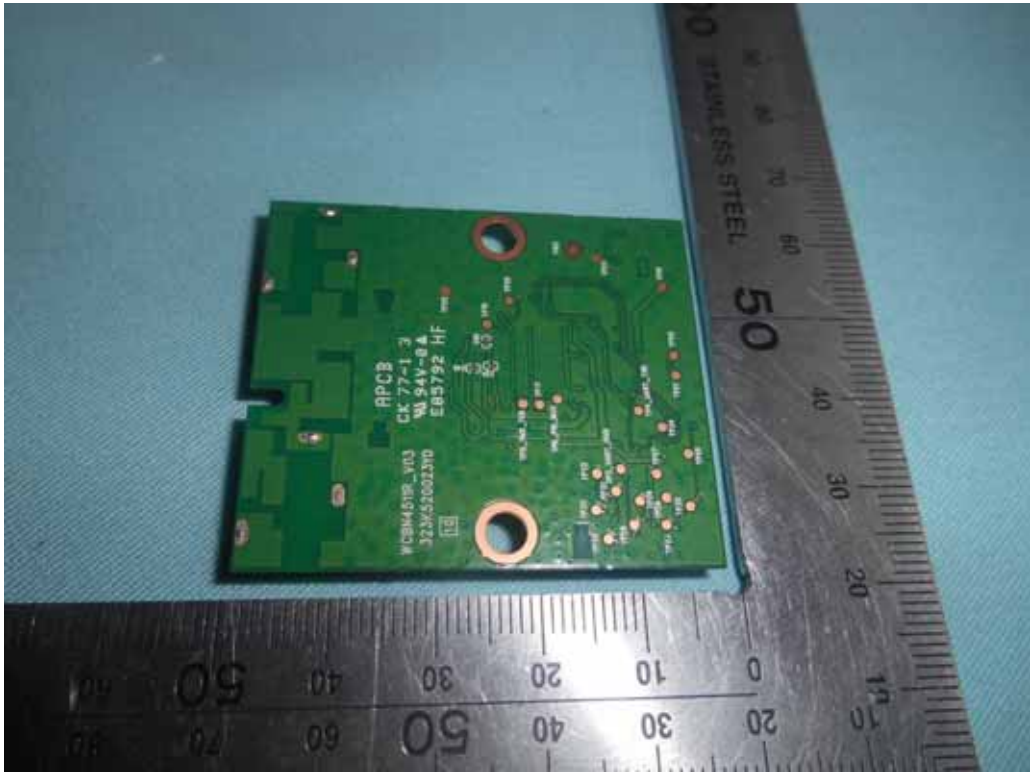


FIGURE 20
LED LCD TV (M/N: 50CU6000)
RF BOARD (COVER REMOVED)



FIGURE 21
LED LCD TV (M/N: 50CU6000)
CHIP AND CRYSTAL ON RF BOARD



FIGURE 22
LED LCD TV (M/N: 50CU6000)
DEBUG #1



FIGURE 23
LED LCD TV (M/N: 50CU6000)
DEBUG #2

