

FIGURE 1
LED LCD TV (M/N: 50H5GB)
COVER REMOVED

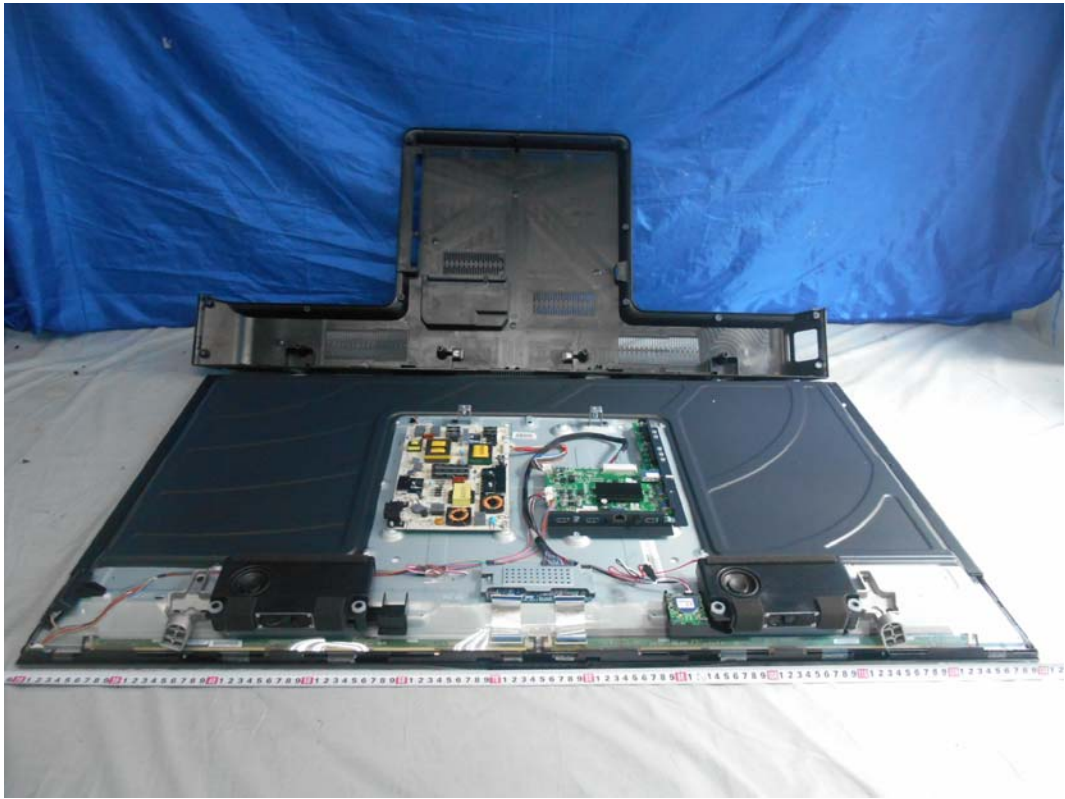


FIGURE 2
LED LCD TV (M/N: 50H5GB)
LCD PANEL LABEL

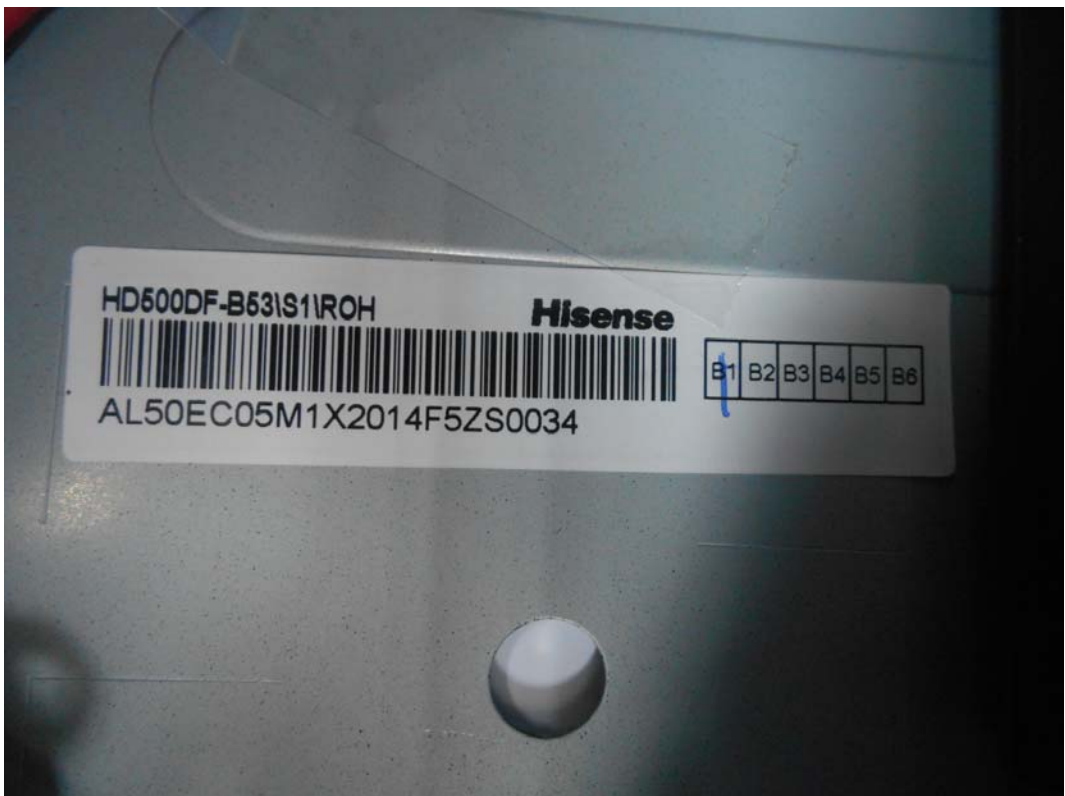


FIGURE 3
LED LCD TV (M/N: 50H5GB)
SPEAKER



FIGURE 4
LED LCD TV (M/N: 50H5GB)
MAIN BOARD (COMPONENT SIDE)



FIGURE 5
LED LCD TV (M/N: 50H5GB)
MAIN BOARD (SOLDERED SIDE)

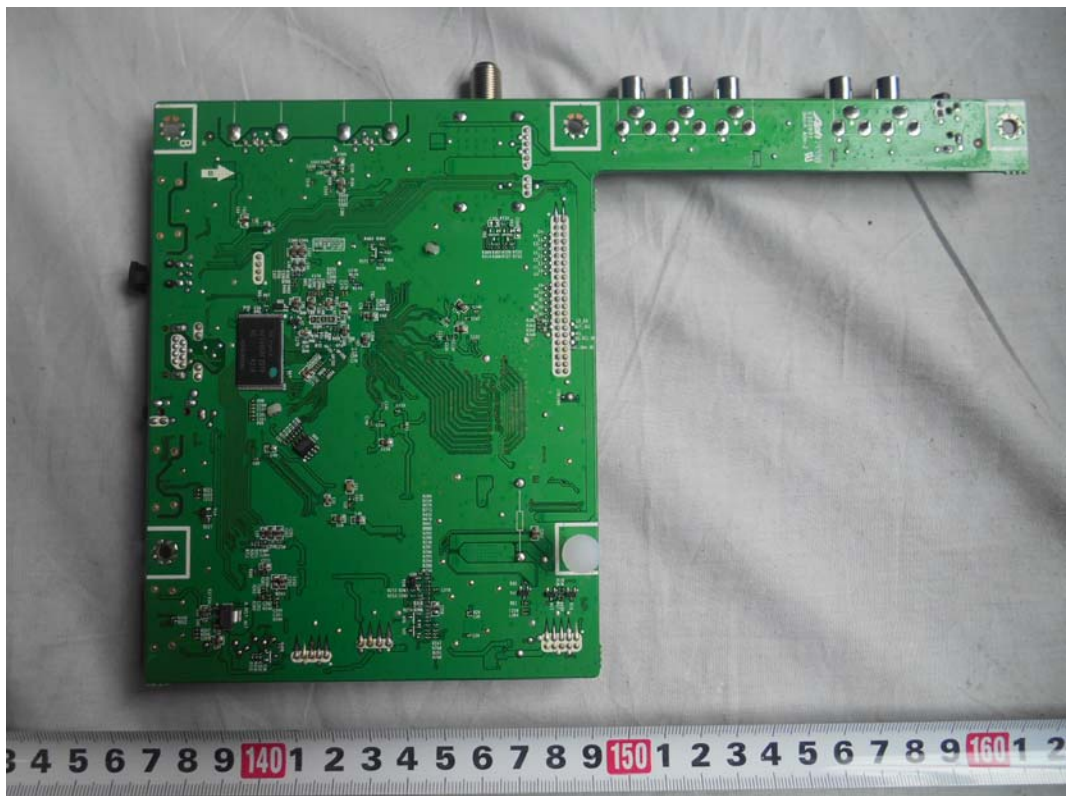


FIGURE 6
LED LCD TV (M/N: 50H5GB)
CHIP #1 AND CRYSTAL ON MAIN BOARD

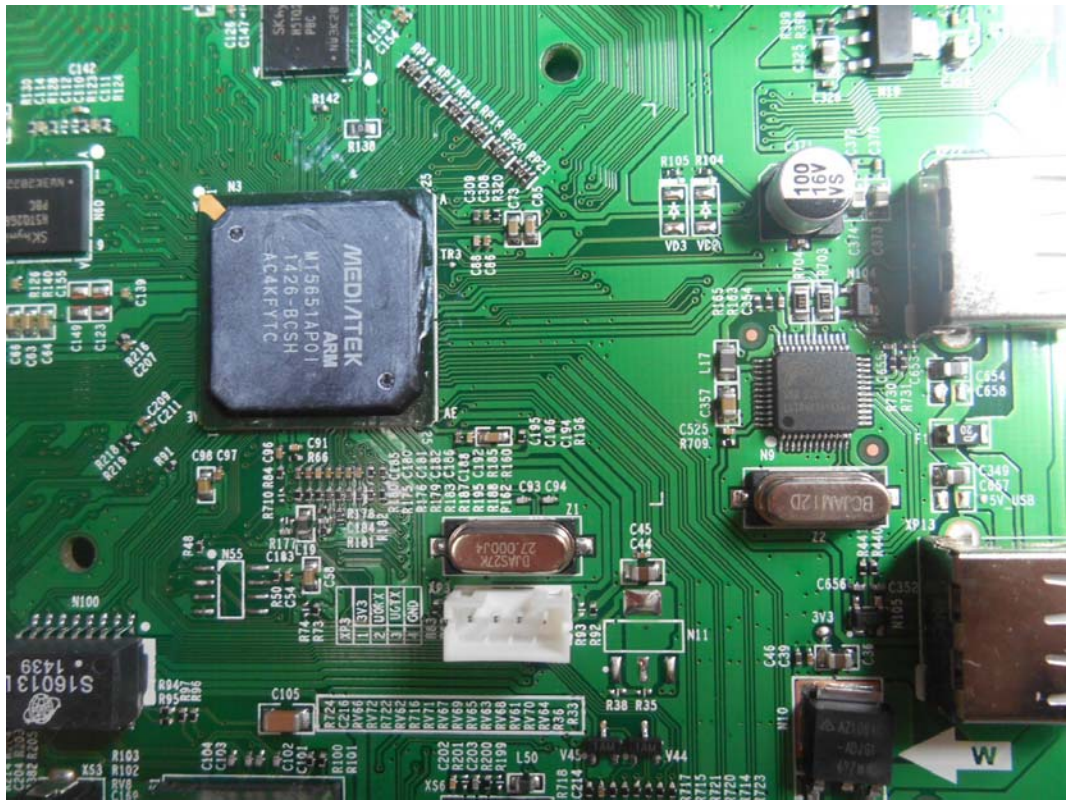


FIGURE 7
LED LCD TV (M/N: 55H6B)
CHIP #2 ON MAIN BOARD



FIGURE 8
LED LCD TV (M/N: 50H5GB)
TUNER ON MAIN BOARD



FIGURE 9
LED LCD TV (M/N: 50H5GB)
TUNER COVER REMOVED



FIGURE 10
LED LCD TV (M/N: 50H5GB)
KEY BOARD (COMPONENT SIDE)

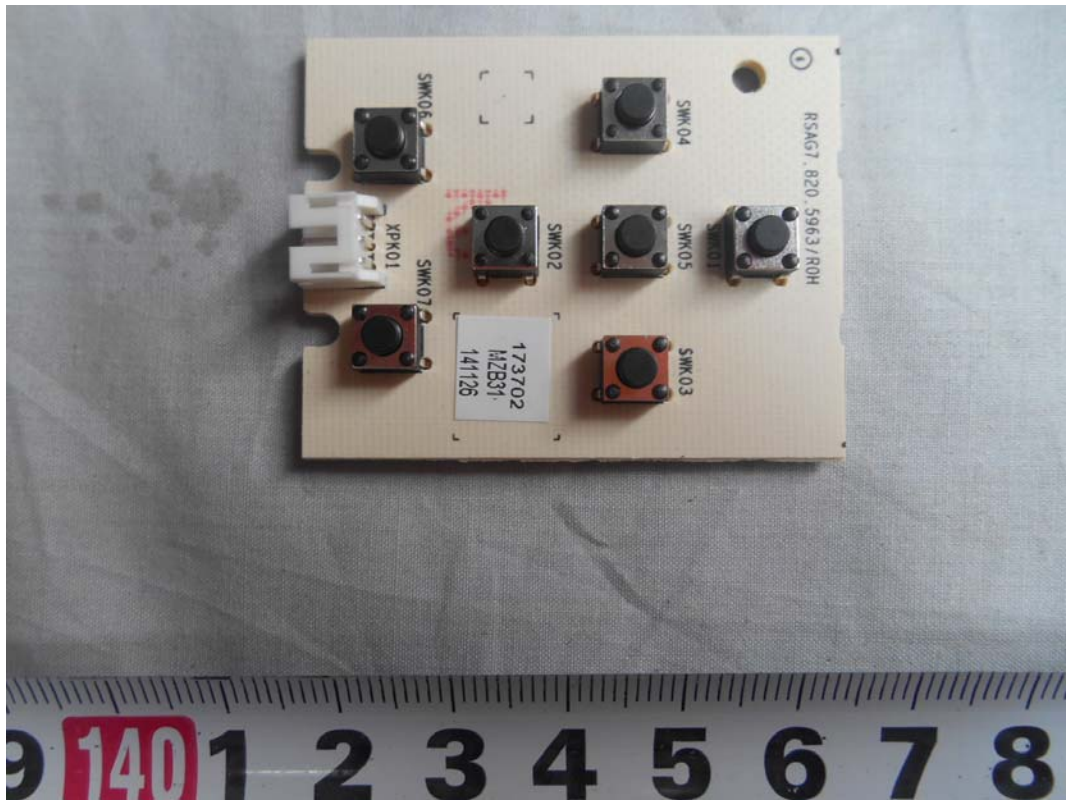


FIGURE 11
LED LCD TV (M/N: 50H5GB)
KEY BOARD (SOLDERED SIDE)

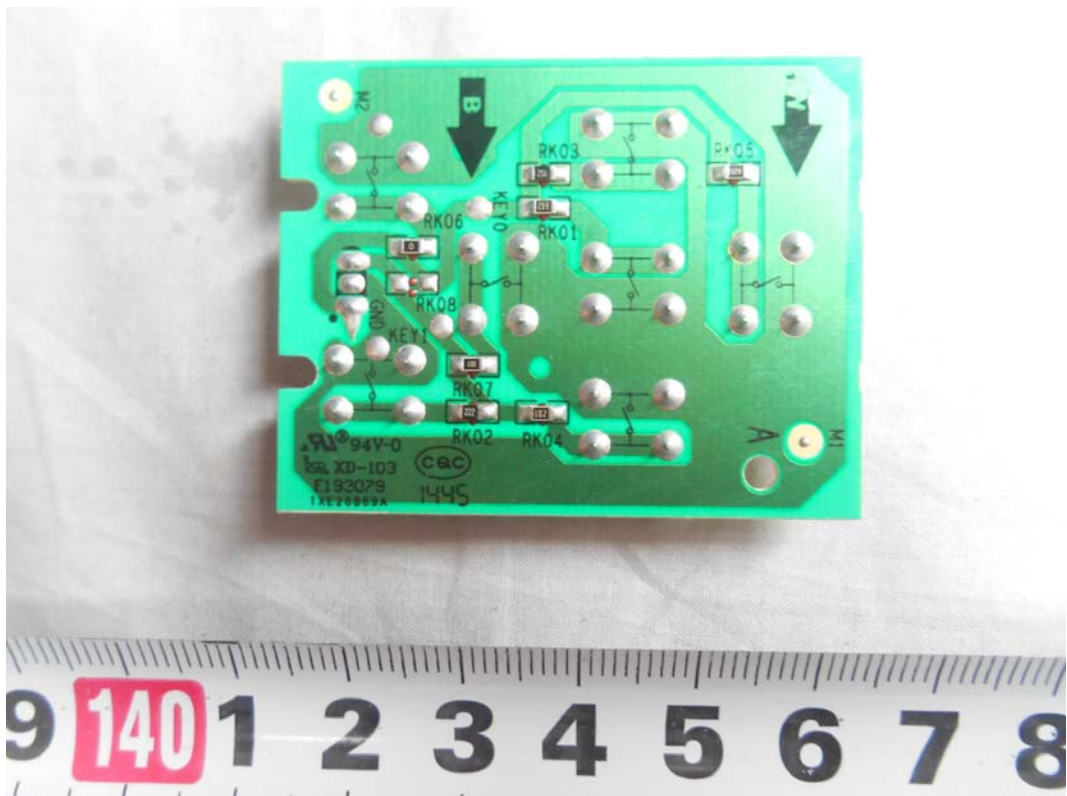


FIGURE 12
LED LCD TV (M/N: 50H5GB)
RF BOARD (COMPONENT SIDE)



FIGURE 13
LED LCD TV (M/N: 50H5GB)
RF BOARD (SOLDERED SIDE)

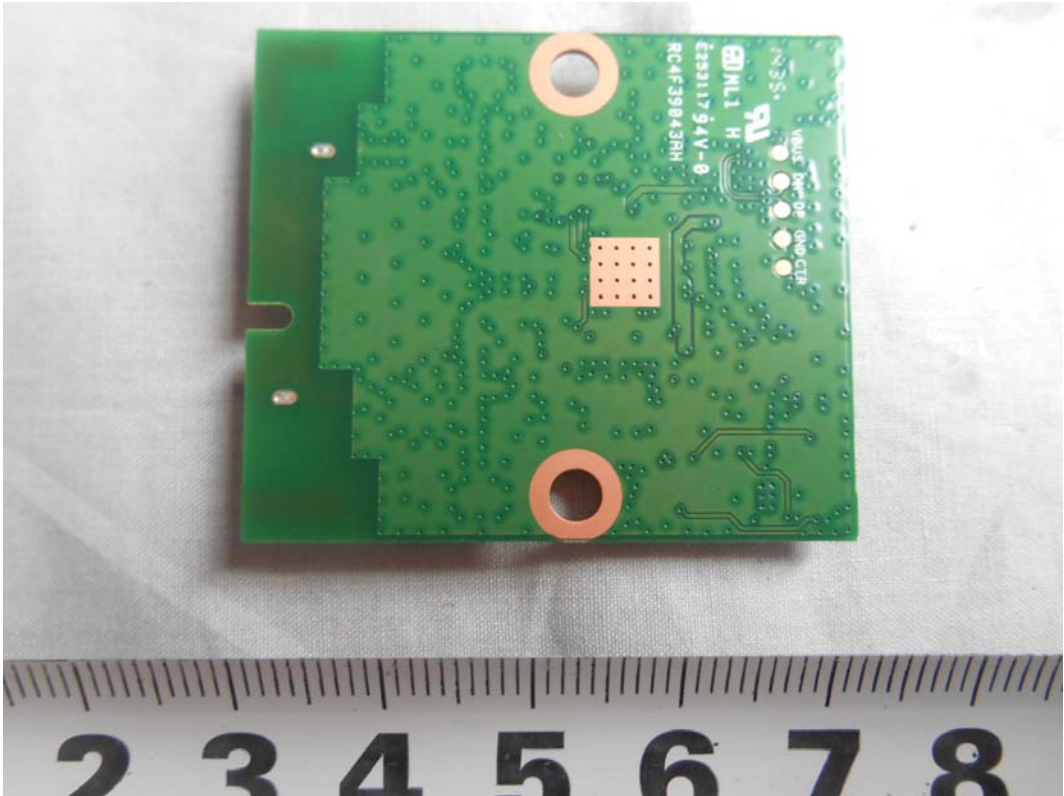


FIGURE 14
LED LCD TV (M/N: 50H5GB)
LABEL ON RF BOARD



FIGURE 15
LED LCD TV (M/N: 50H5GB)
SIGNAL BOARD (COMPONENT SIDE)



FIGURE 16
LED LCD TV (M/N: 50H5GB)
SIGNAL BOARD (SOLDERED SIDE)



FIGURE 17
LED LCD TV (M/N: 50H5GB)
POWER BOARD (COMPONENT SIDE)

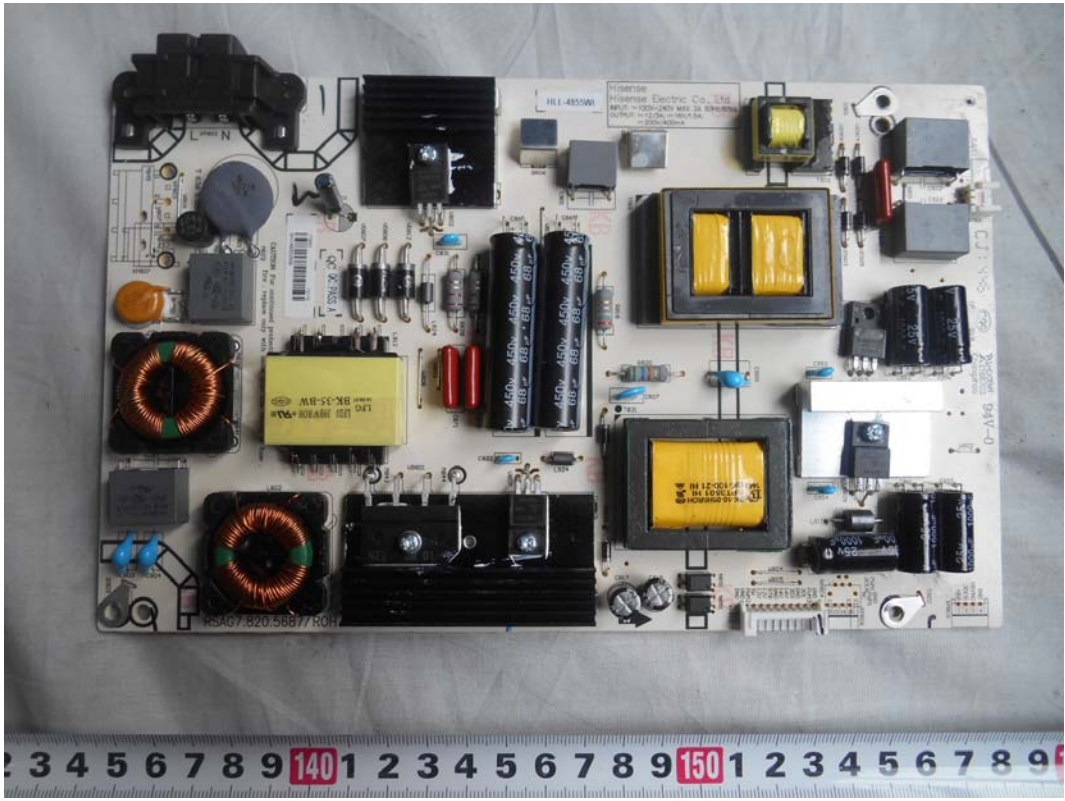


FIGURE 18
LED LCD TV (M/N: 50H5GB)
POWER BOARD (SOLDERED SIDE)

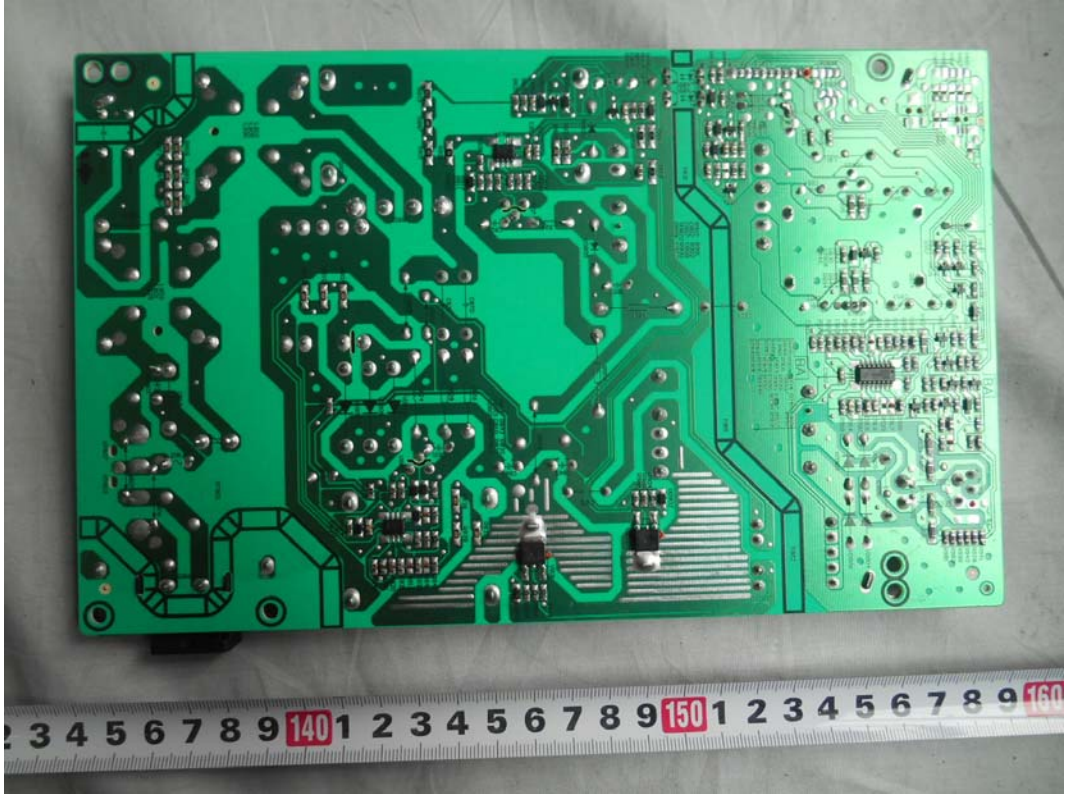


FIGURE 19
LED LCD TV (M/N: 50H5GB)
INTERFACE BOARD (COMPONENT SIDE)

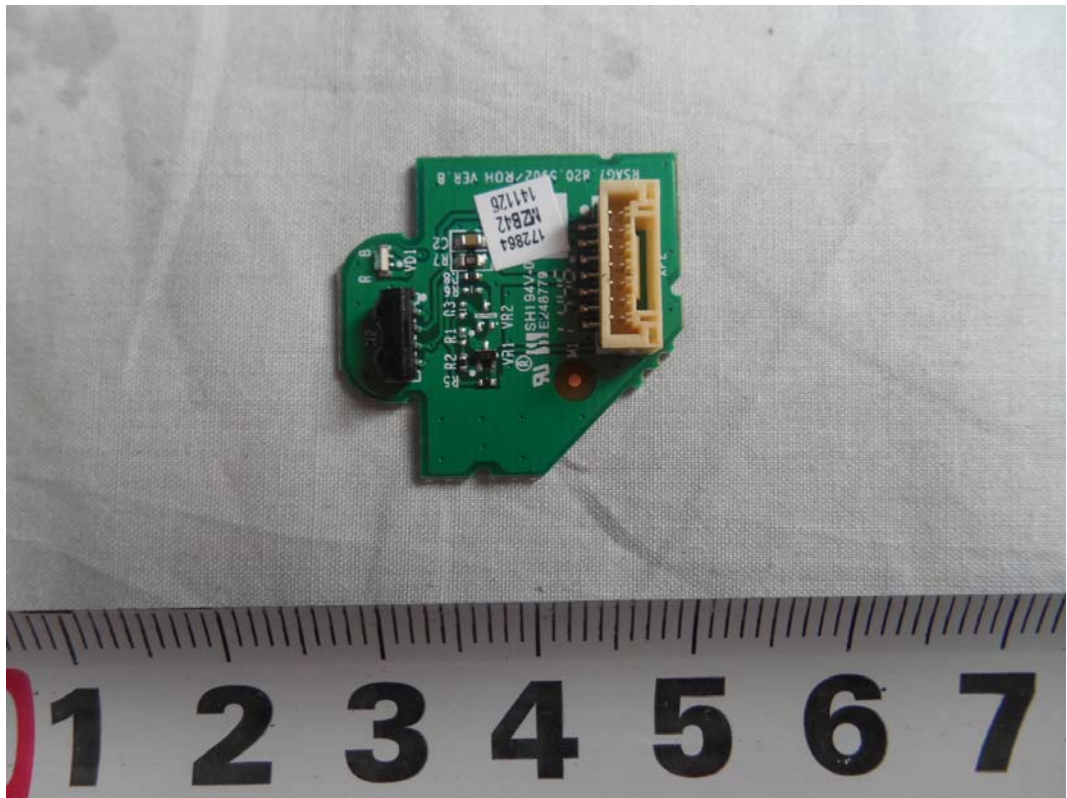


FIGURE 20
LED LCD TV (M/N: 50H5GB)
INTERFACE BOARD (SOLDERED SIDE)

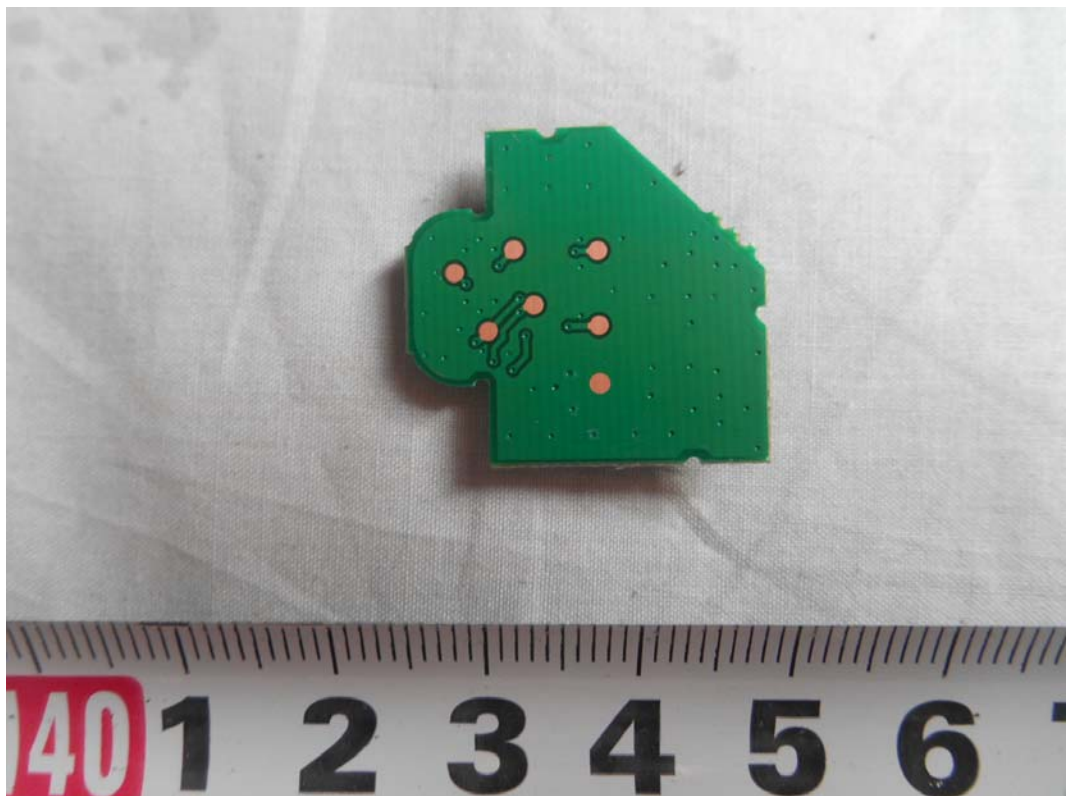


FIGURE 21
LED LCD TV (M/N: 50H5GB)
DEBUG #1

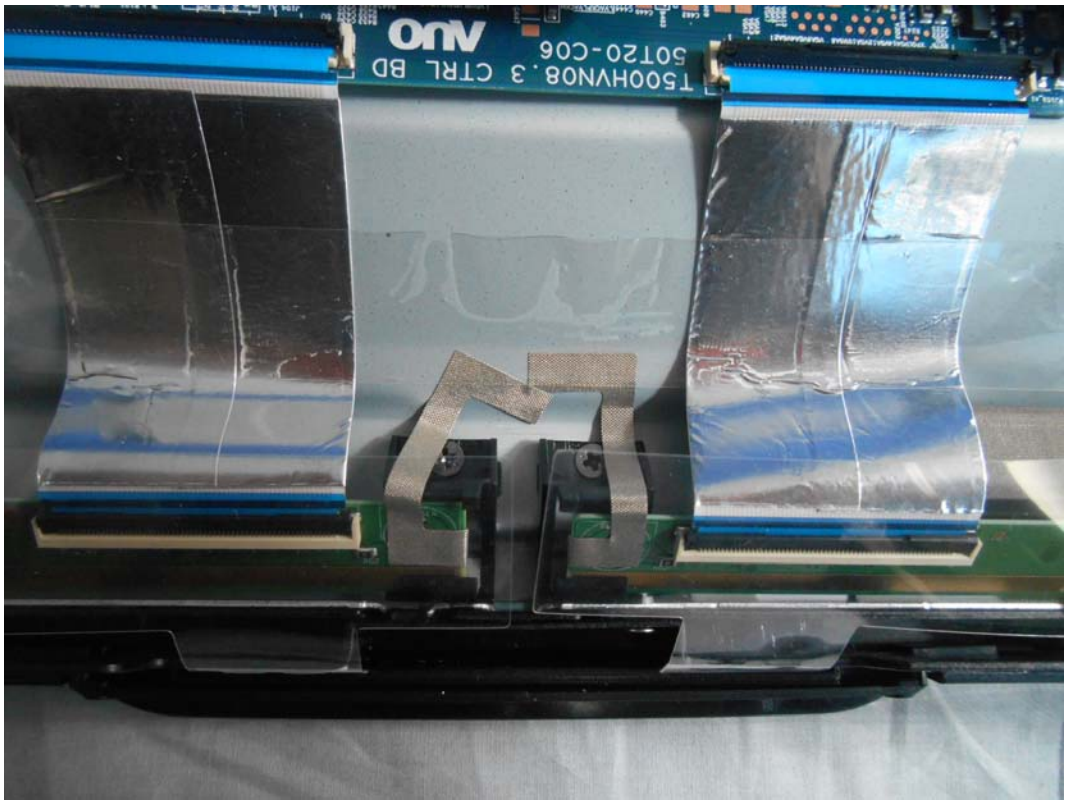


FIGURE 22
LED LCD TV (M/N: 50H5GB)
DEBUG #2

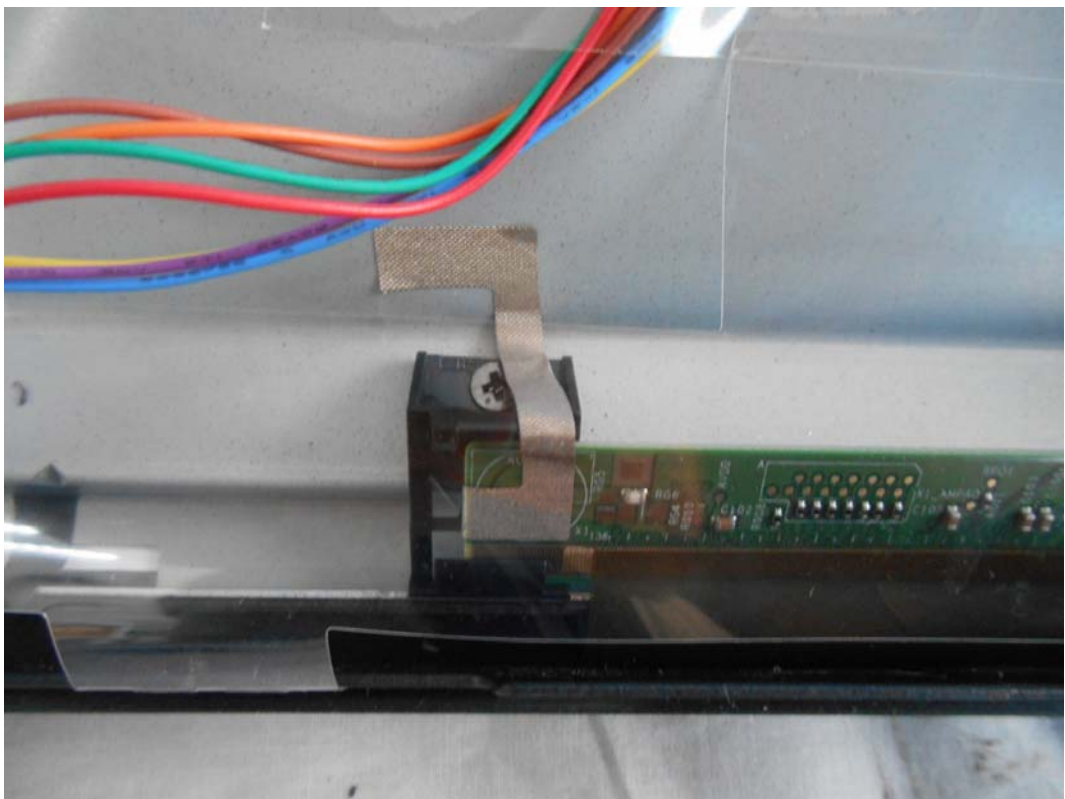


FIGURE 23
LED LCD TV (M/N: 50H5GB)
DEBUG #3



FIGURE 24
LED LCD TV (M/N: 50H5GB)
DEBUG #4



FIGURE 25
LED LCD TV (M/N: 50H5GB)
DEBUG #5

