

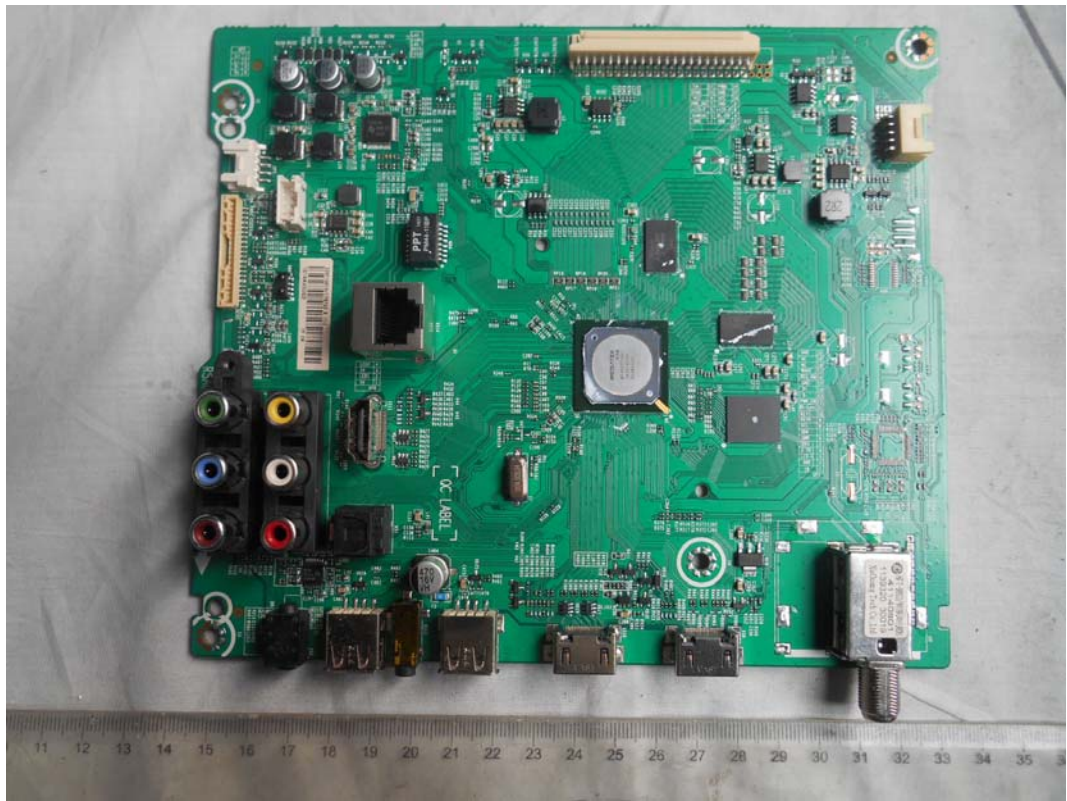
*FIGURE 1*  
*LED LCD TV (M/N: 55H6B)*  
*COVER REMOVED*



*FIGURE 2*  
*LED LCD TV (M/N: 55H6B)*  
*LCD PANEL LABEL*



*FIGURE 3*  
*LED LCD TV (M/N: 55H6B)*  
*MAIN BOARD (COMPONENT SIDE)*



*FIGURE 4*  
*LED LCD TV (M/N: 55H6B)*  
*MAIN BOARD (SOLDERED SIDE)*

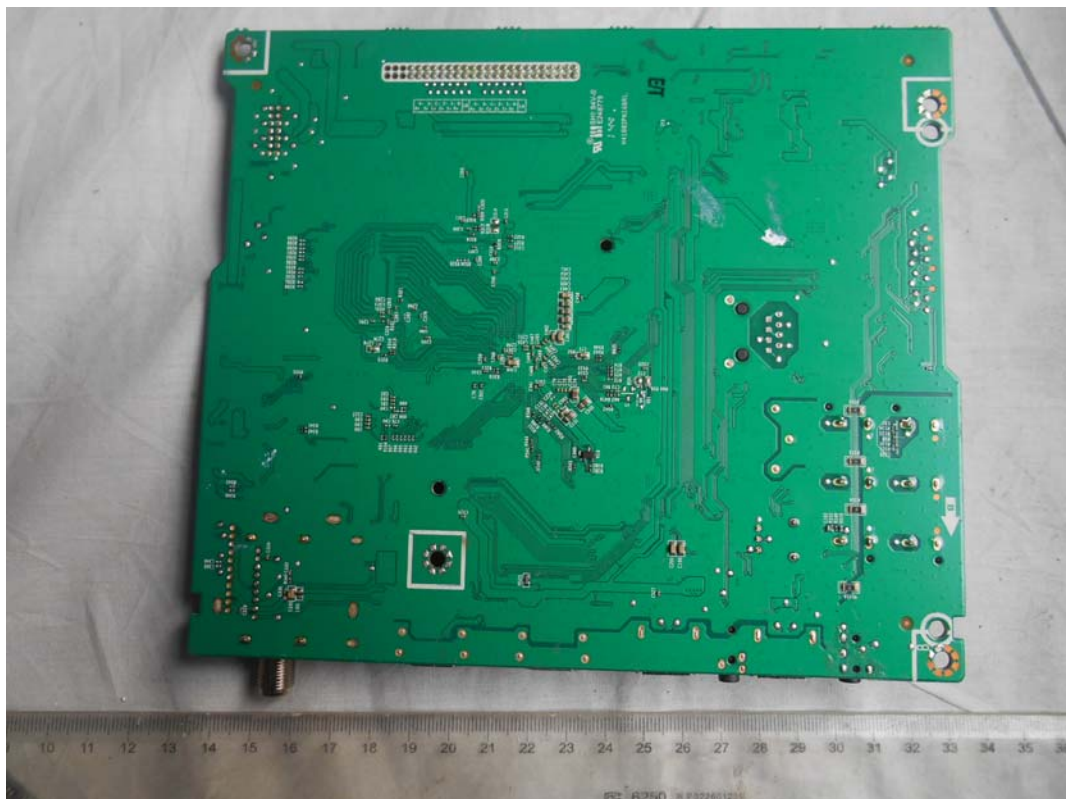


FIGURE 5  
LED LCD TV (M/N: 55H6B)  
CHIP #1 AND CRYSTAL ON MAIN BOARD

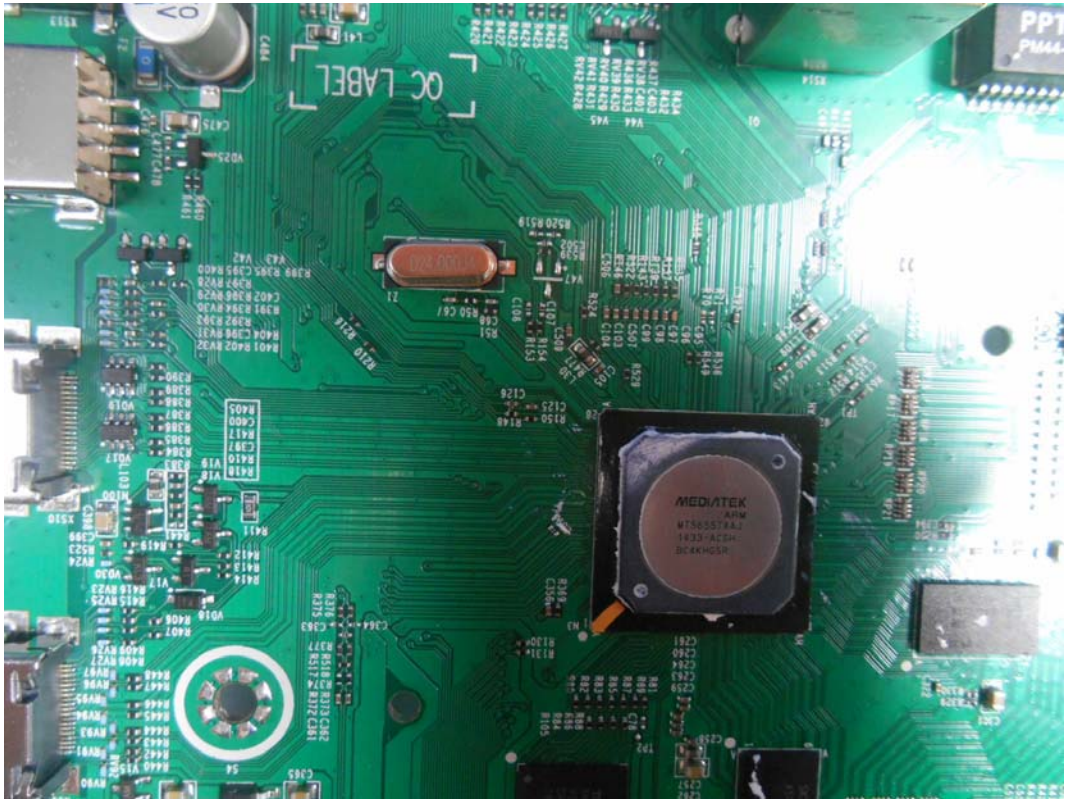
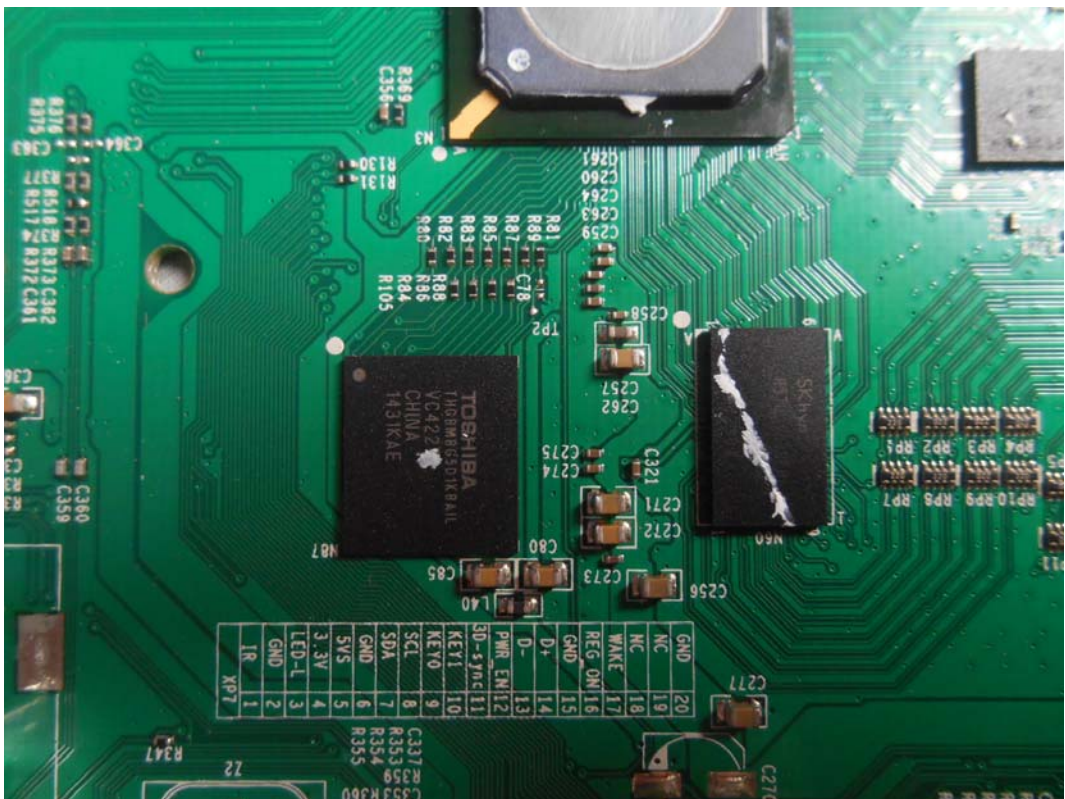


FIGURE 6  
LED LCD TV (M/N: 55H6B)  
CHIP #2 ON MAIN BOARD



*FIGURE 7  
LED LCD TV (M/N: 55H6B)  
TUNER ON MAIN BOARD*



*FIGURE 8  
LED LCD TV (M/N: 55H6B)  
TUNER COVER REMOVED*

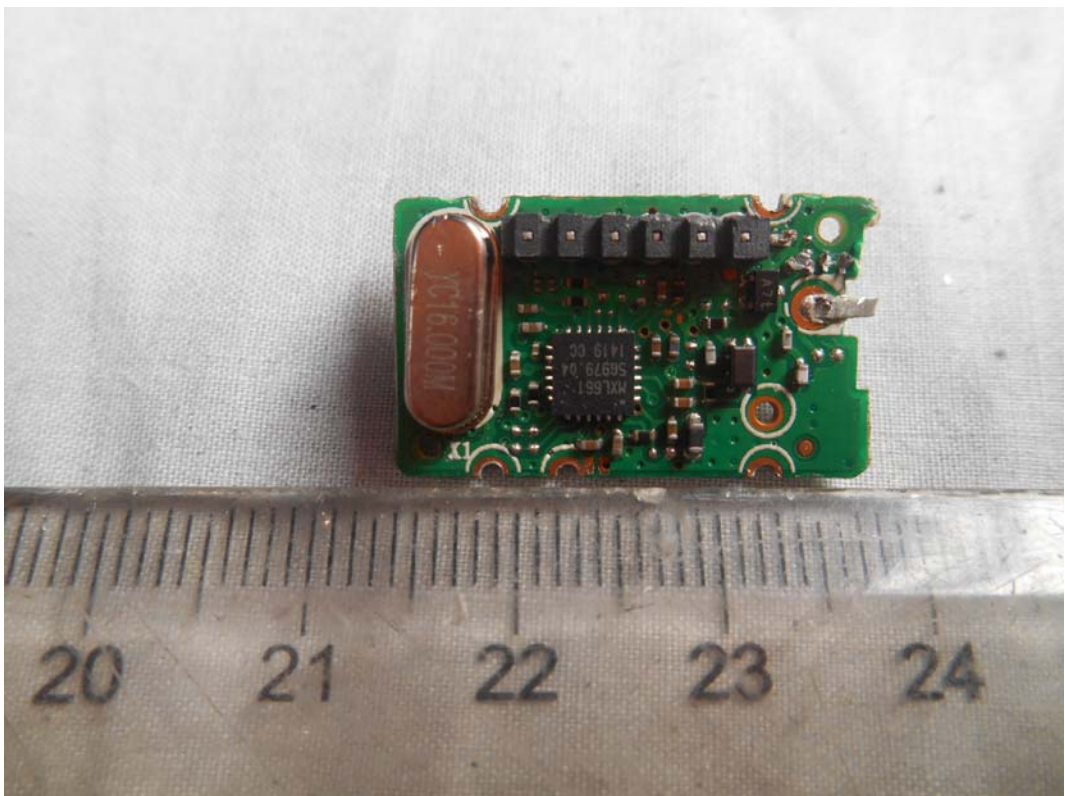


FIGURE 9  
LED LCD TV (M/N: 55H6B)  
KEY BOARD (COMPONENT SIDE)

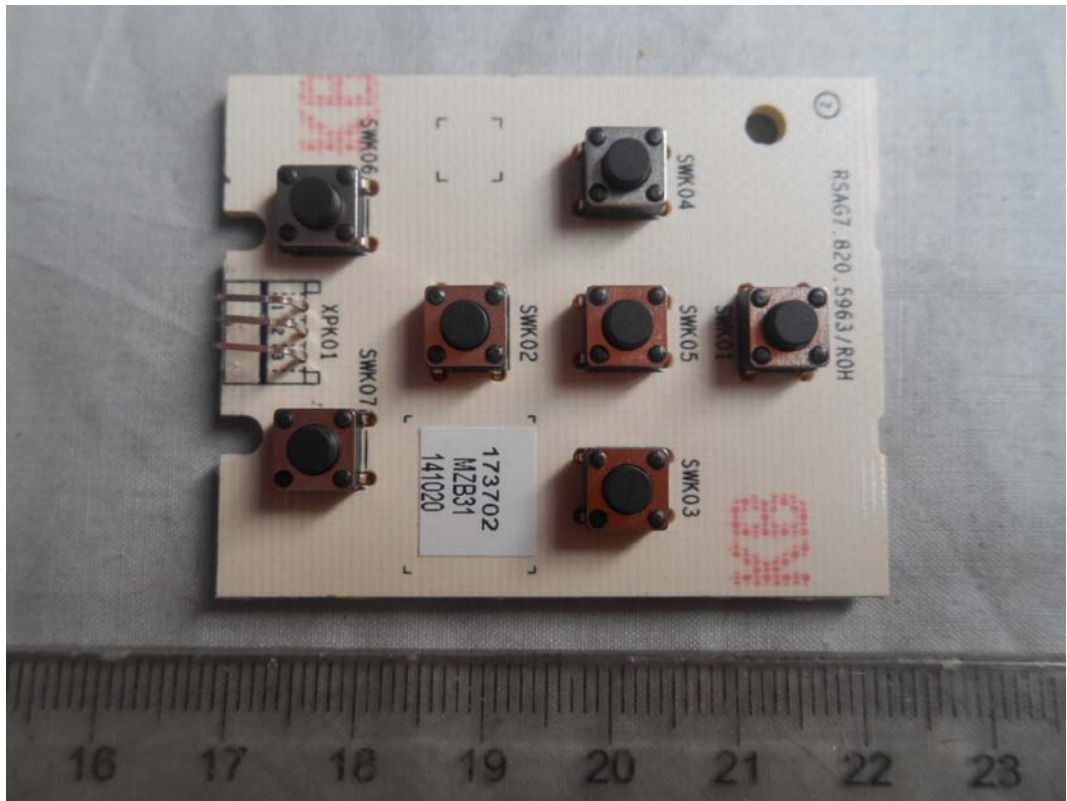


FIGURE 10  
LED LCD TV (M/N: 55H6B)  
KEY BOARD (SOLDERED SIDE)

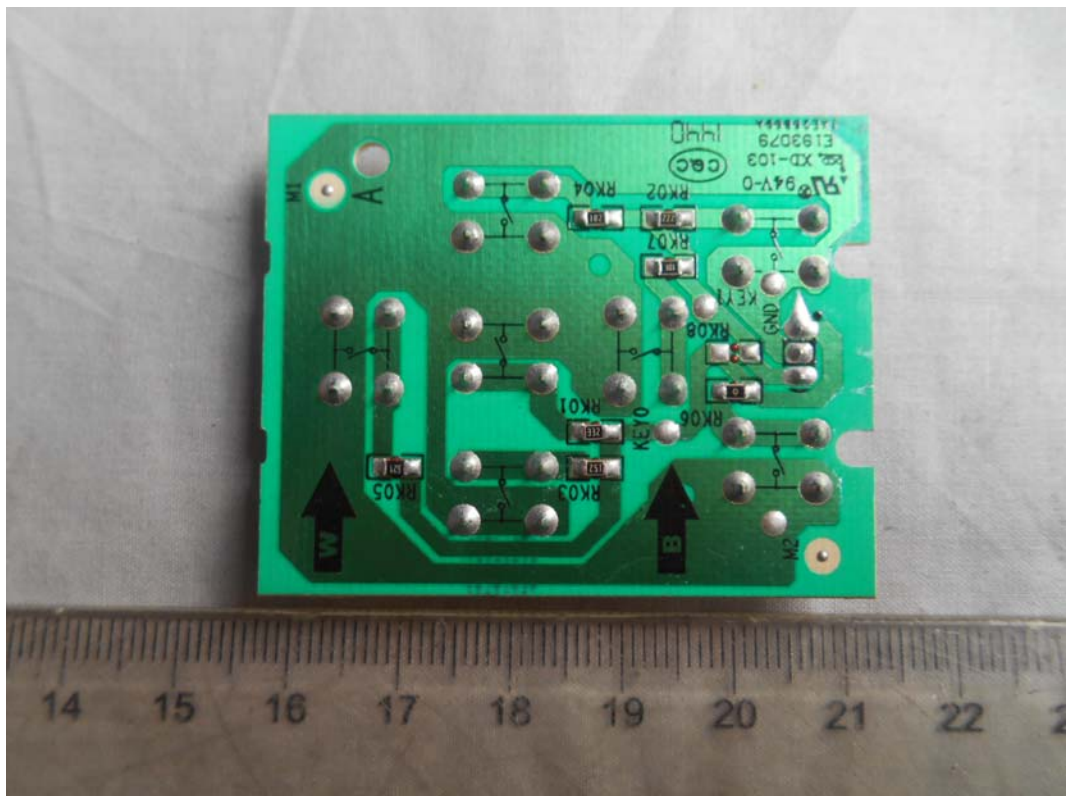


FIGURE 11  
LED LCD TV (M/N: 55H6B)  
RF BOARD (COMPONENT SIDE)



FIGURE 12  
LED LCD TV (M/N: 55H6B)  
RF BOARD (SOLDERED SIDE)



FIGURE 13  
LED LCD TV (M/N: 55H6B)  
SIGNAL BOARD (COMPONENT SIDE)

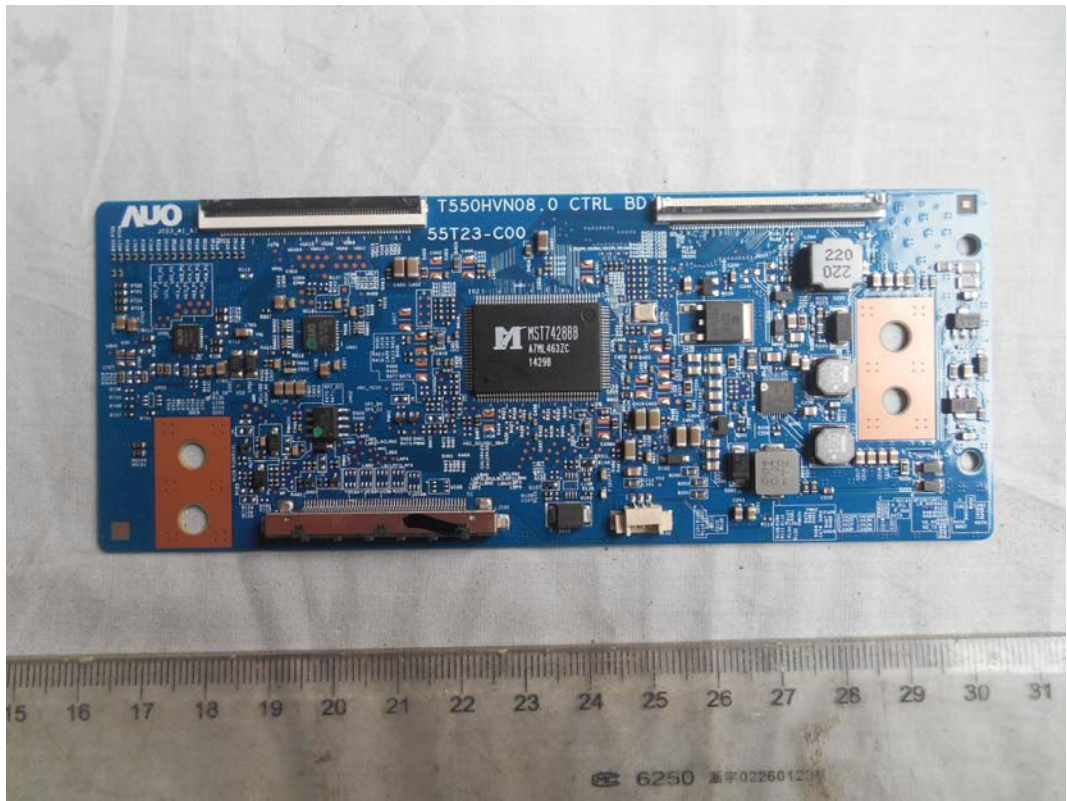
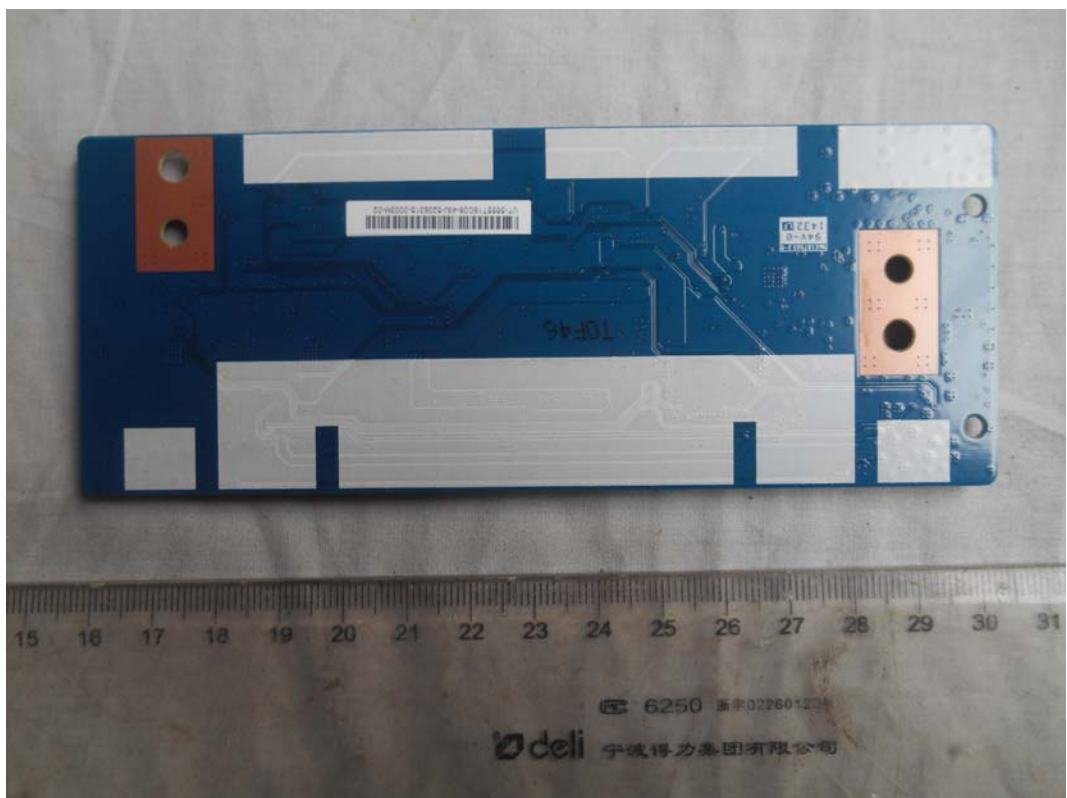
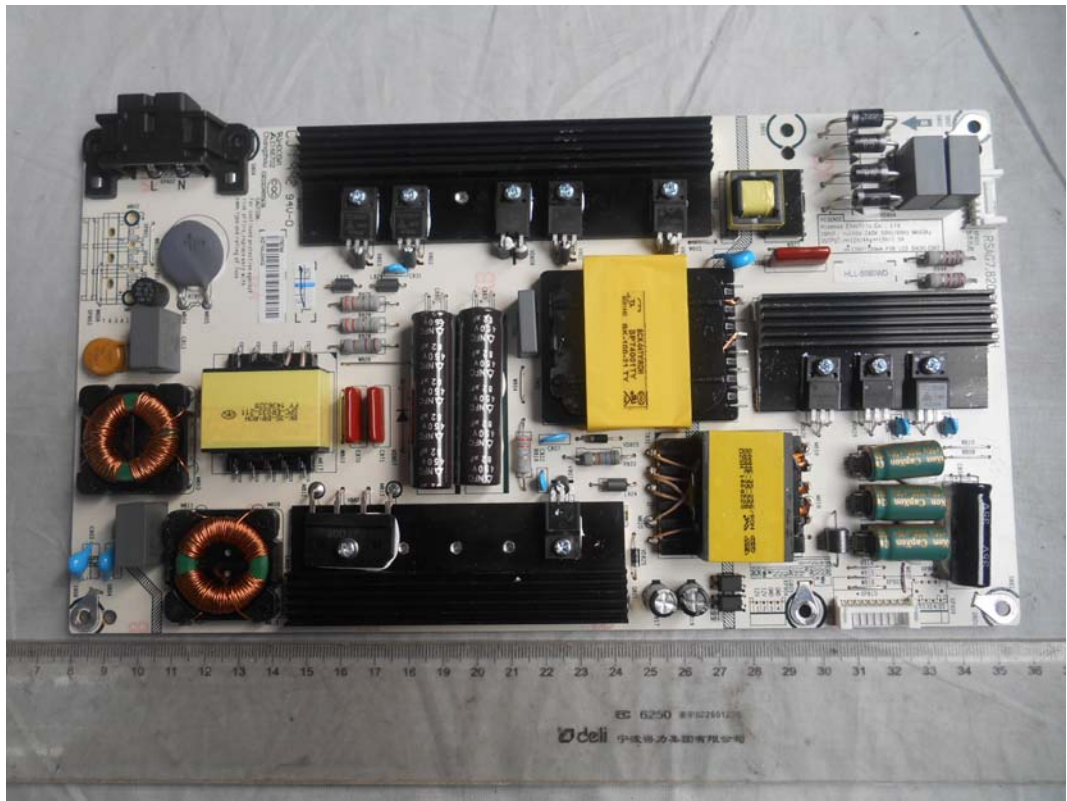


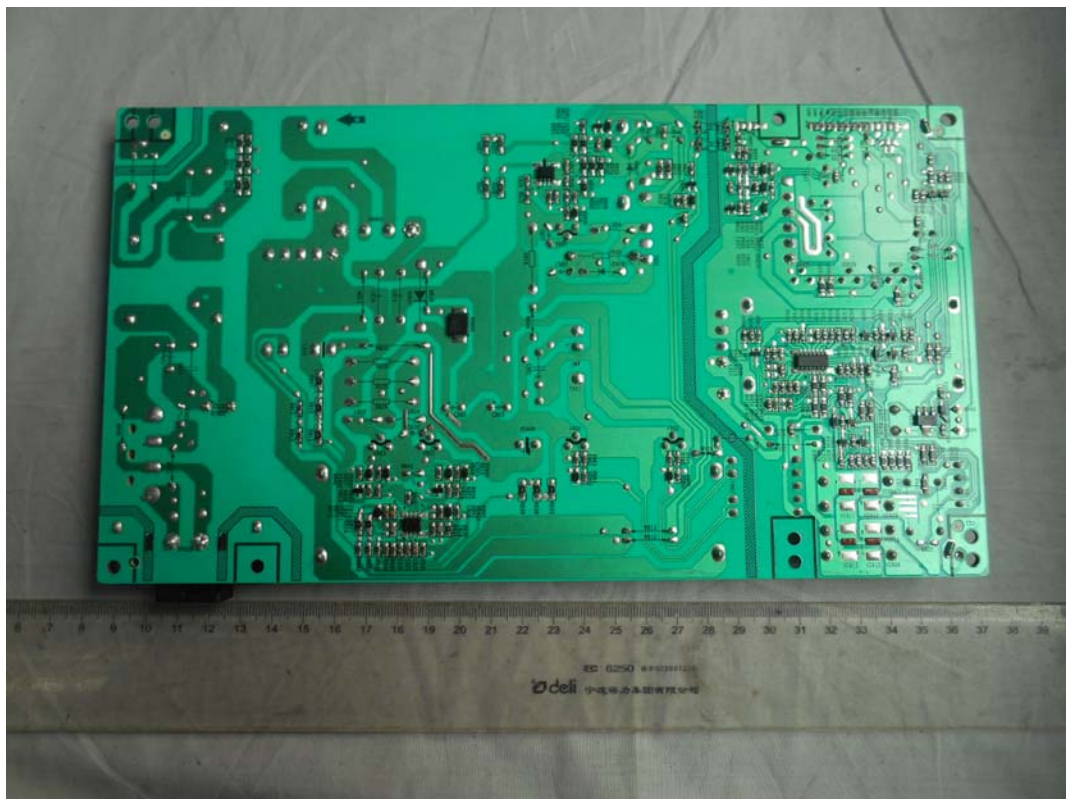
FIGURE 14  
LED LCD TV (M/N: 55H6B)  
SIGNAL BOARD (SOLDERED SIDE)



*FIGURE 15  
LED LCD TV (M/N: 55H6B)  
POWER BOARD (COMPONENT SIDE)*



*FIGURE 16  
LED LCD TV (M/N: 55H6B)  
POWER BOARD (SOLDERED SIDE)*





*FIGURE 17*  
*LED LCD TV (M/N: 55H6B)*  
*DEBUG*

