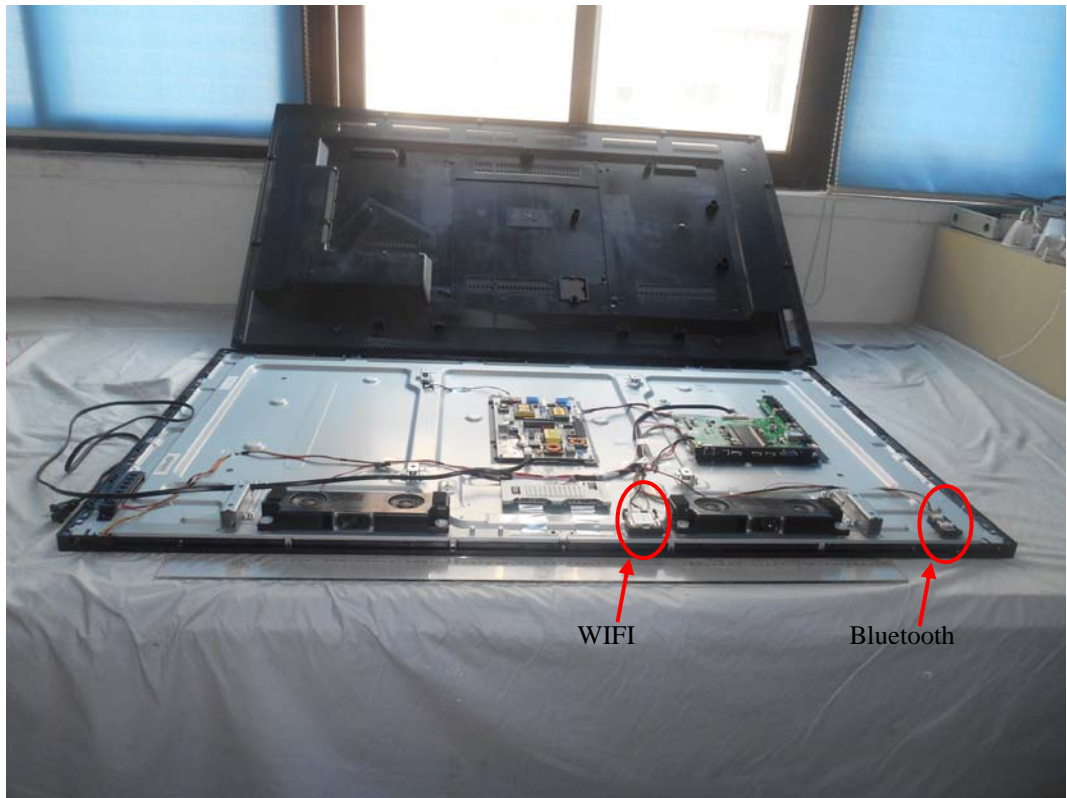


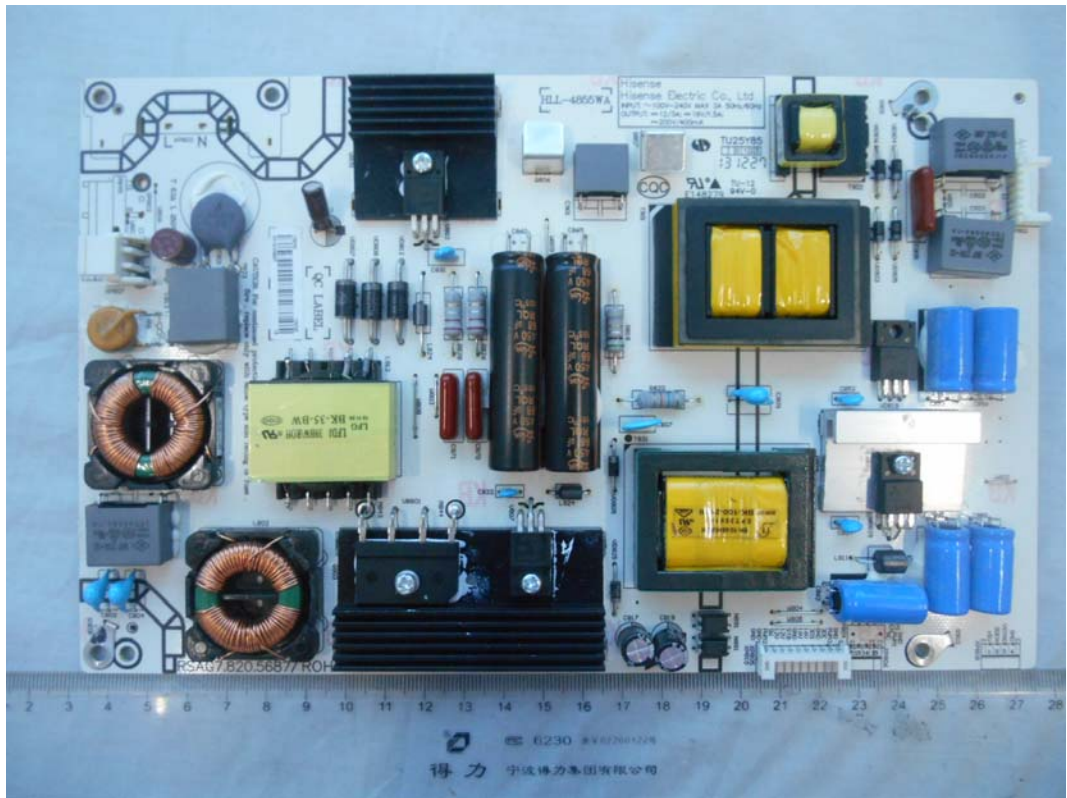
*FIGURE 1*  
*LED LCD TV (M/N: 55H7EG)*  
*COVER REMOVED*



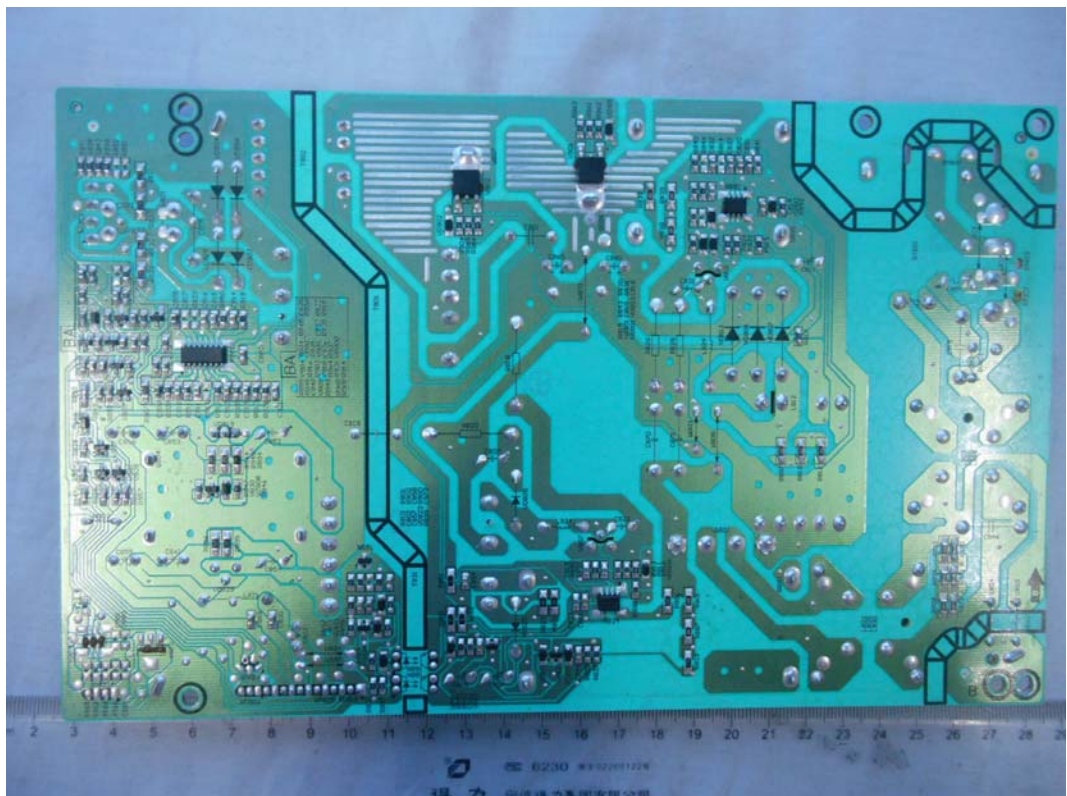
*FIGURE 2*  
*LED LCD TV (M/N: 55H7EG)*  
*LCD PANEL LABEL*



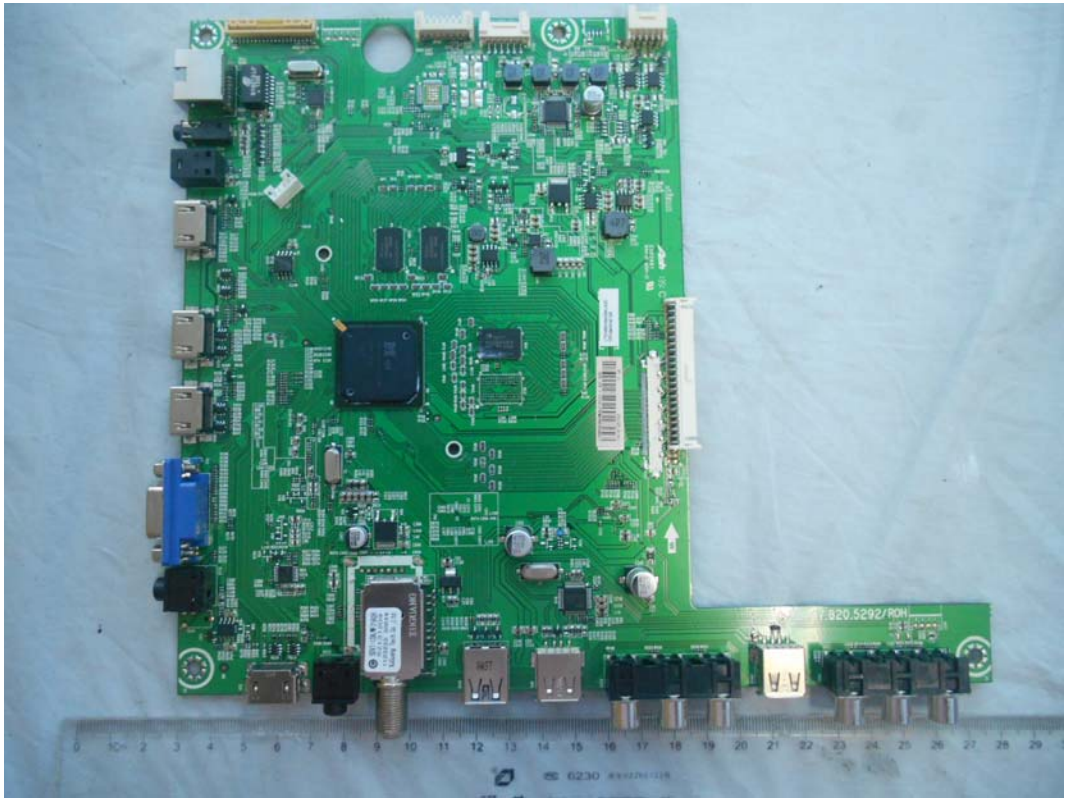
*FIGURE 3*  
*LED LCD TV (M/N: 55H7EG)*  
*POWER BOARD (COMPONENT SIDE)*



*FIGURE 4*  
*LED LCD TV (M/N: 55H7EG)*  
*POWER BOARD (SOLDERED SIDE)*



*FIGURE 5  
LED LCD TV (M/N: 55H7EG)  
MAIN BOARD (COMPONENT SIDE)*



*FIGURE 6  
LED LCD TV (M/N: 55H7EG)  
MAIN BOARD (SOLDERED SIDE)*





FIGURE 9  
LED LCD TV (M/N: 55H7EG)  
CHIP #3 & CRYSTAL #3 ON MAIN BOARD

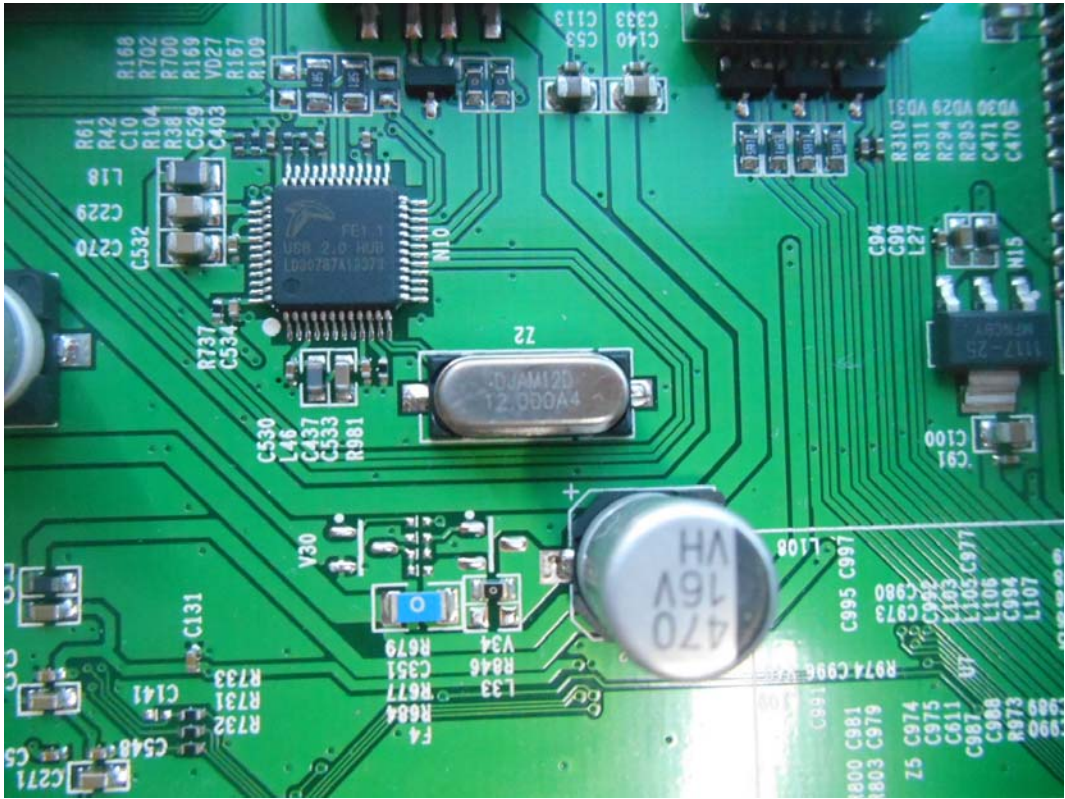


FIGURE 10  
LED LCD TV (M/N: 55H7EG)  
TUNER ON MAIN BOARD

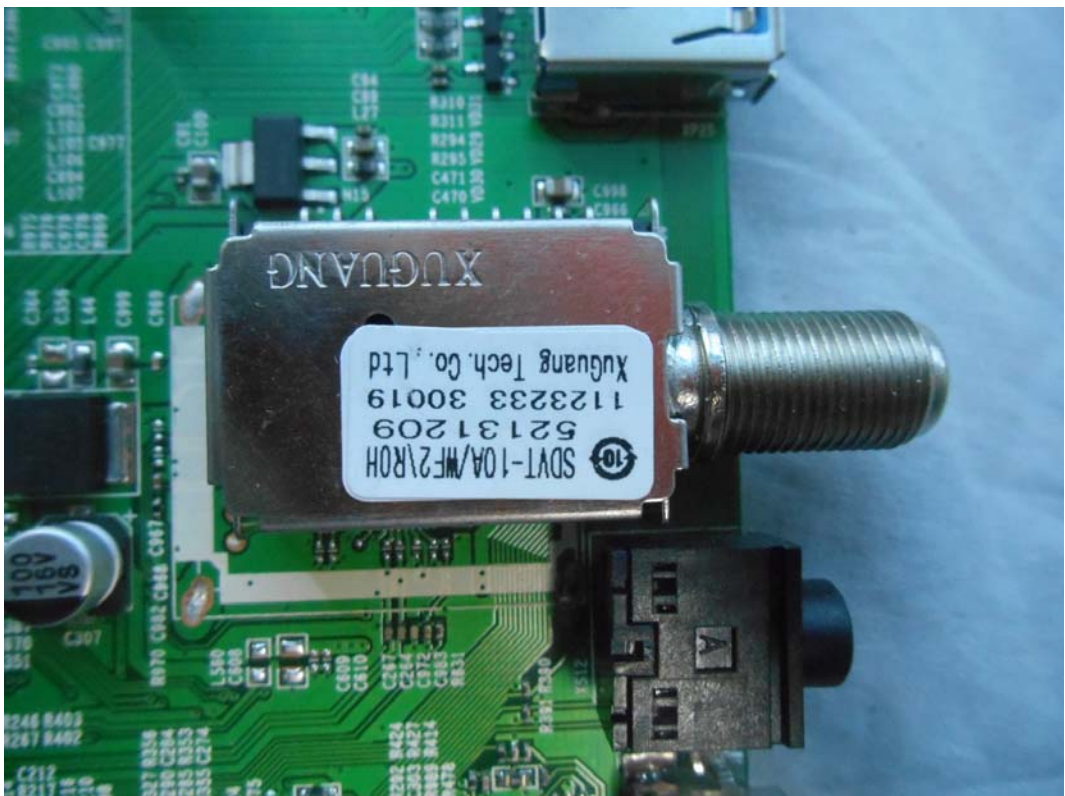


FIGURE 11  
LED LCD TV (M/N: 55H7EG)  
CRYSTAL OF TUNER ON MAIN BOARD

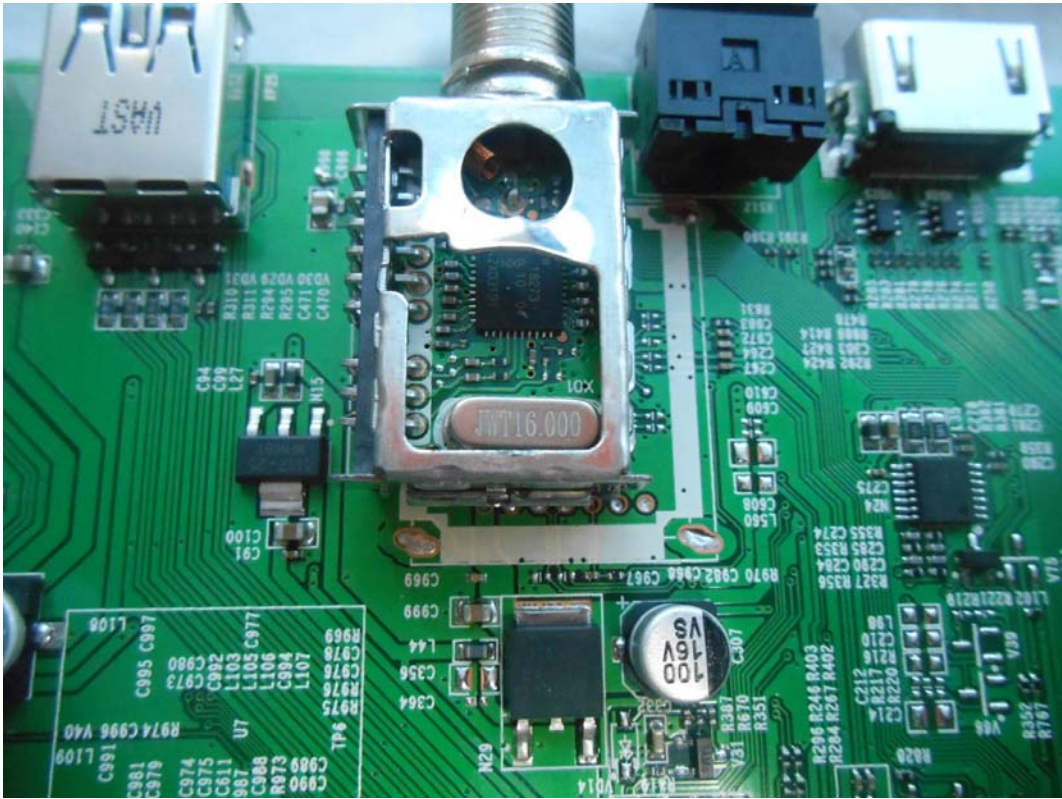


FIGURE 12  
LED LCD TV (M/N: 55H7EG)  
KEY BOARD (COMPONENT SIDE)



FIGURE 13  
LED LCD TV (M/N: 55H7EG)  
KEY BOARD (SOLDERED SIDE)



FIGURE 14  
LED LCD TV (M/N: 55H7EG)  
IR BOARD (COMPONENT SIDE)

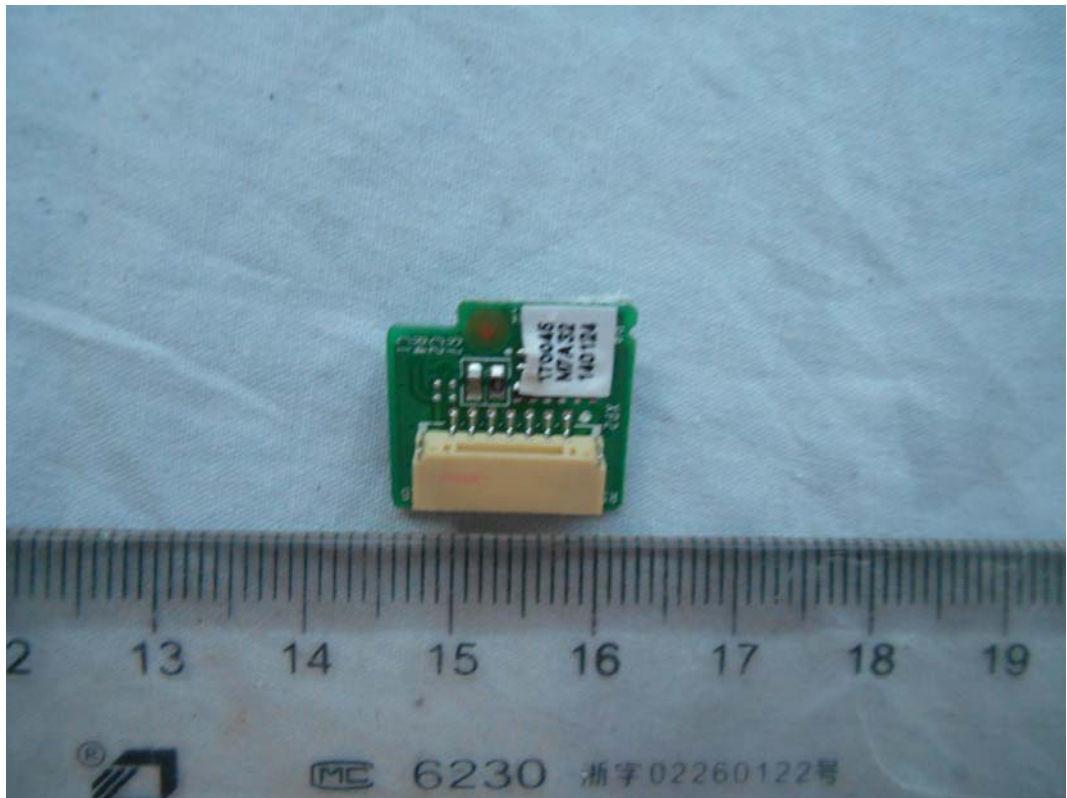


FIGURE 15  
LED LCD TV (M/N: 55H7EG)  
IR BOARD (SOLDERED SIDE)

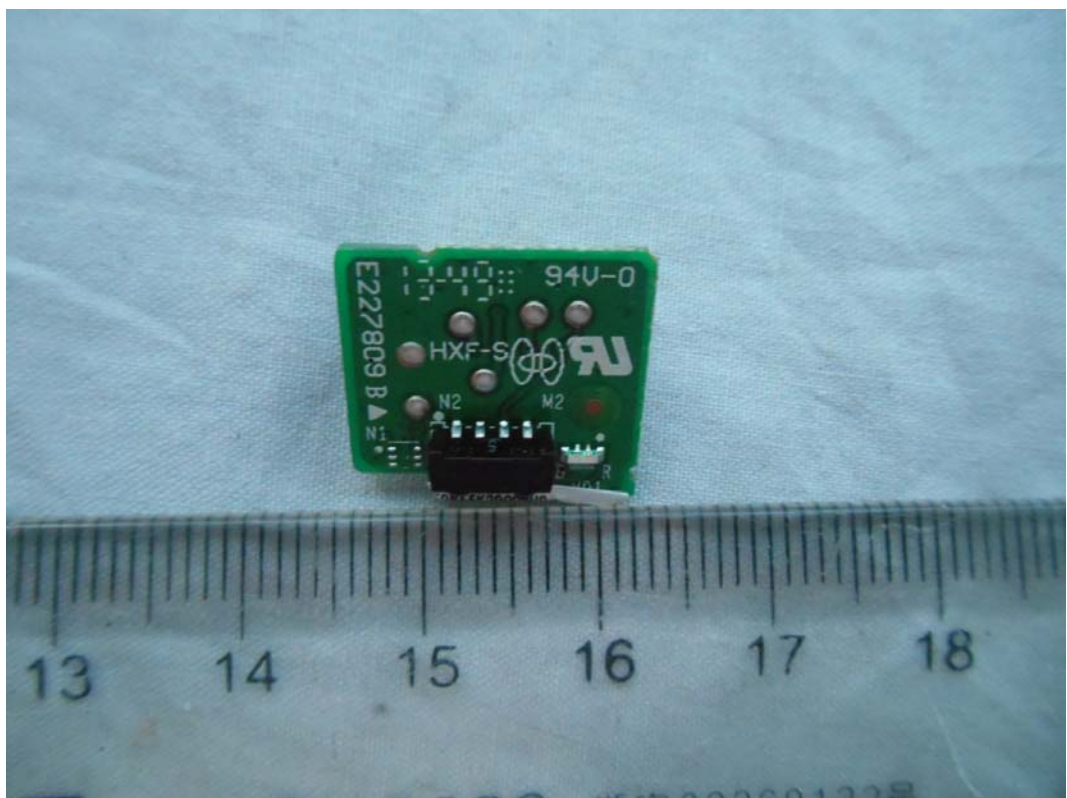
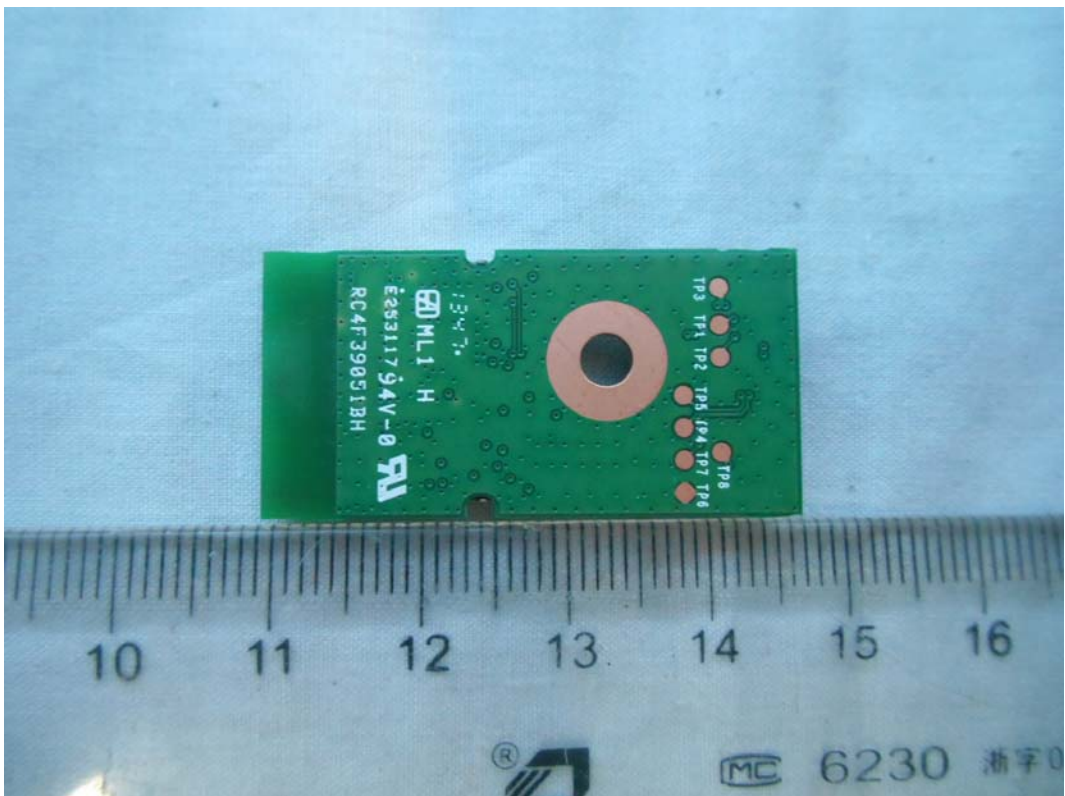




FIGURE 16  
LED LCD TV (M/N: 55H7EG)  
RF BOARD #1 (COMPONENT SIDE)



FIGURE 17  
LED LCD TV (M/N: 55H7EG)  
RF BOARD #1 (SOLDERED SIDE)



*FIGURE 18*  
*LED LCD TV (M/N: 55H7EG)*  
*RF BOARD #2 (COMPONENT SIDE)*



*FIGURE 19*  
*LED LCD TV (M/N: 55H7EG)*  
*RF BOARD #2 (SOLDERED SIDE)*

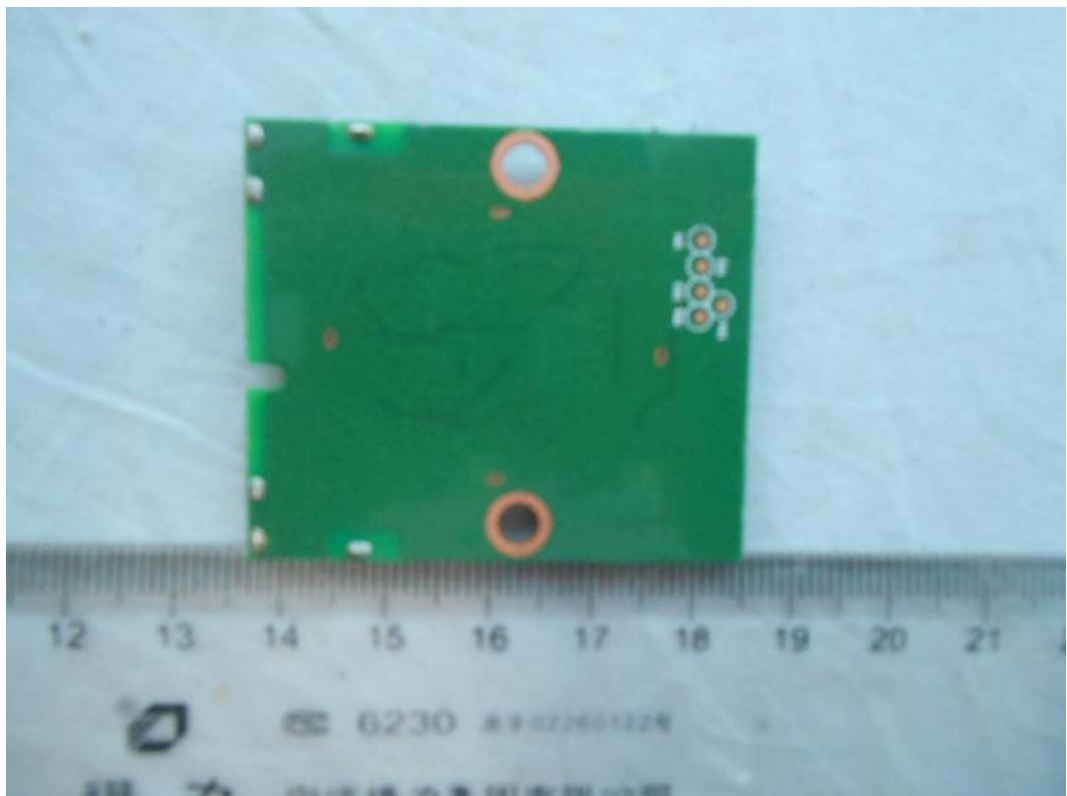


FIGURE 20  
LED LCD TV (M/N: 55H7EG)  
LCD PANEL CONTROL BOARD (COMPONENT SIDE)

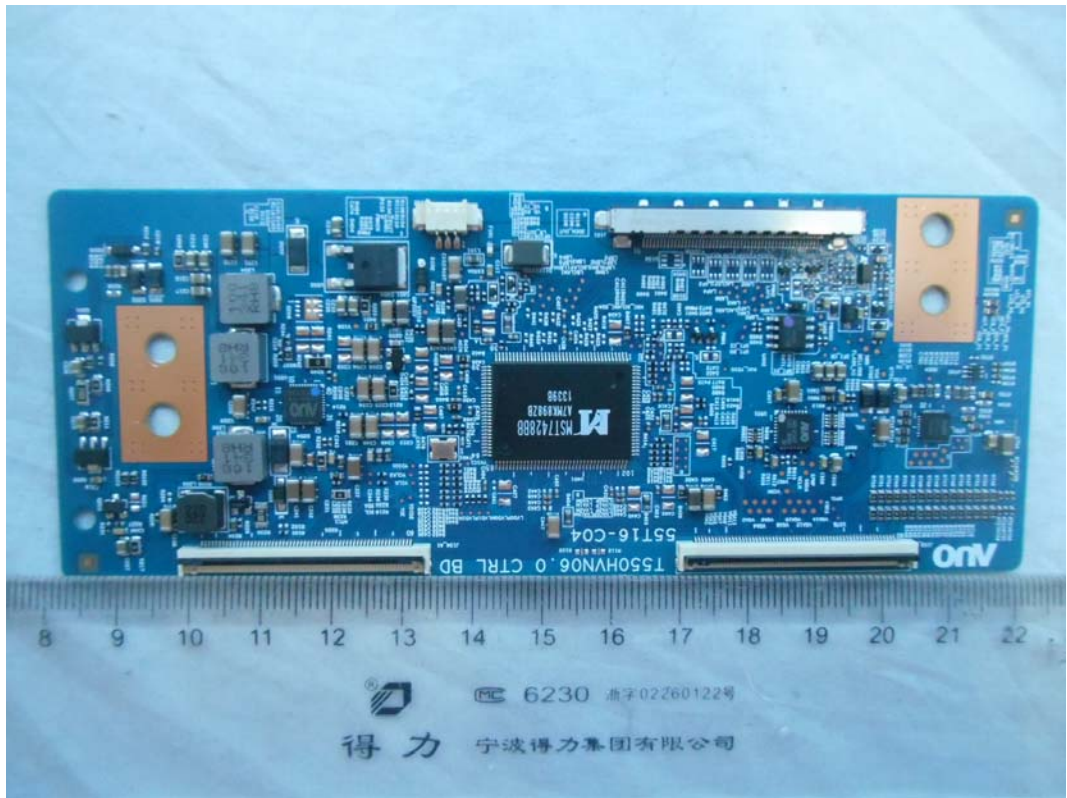


FIGURE 21  
LED LCD TV (M/N: 55H7EG)  
LCD PANEL CONTROL BOARD (SOLDERED SIDE)

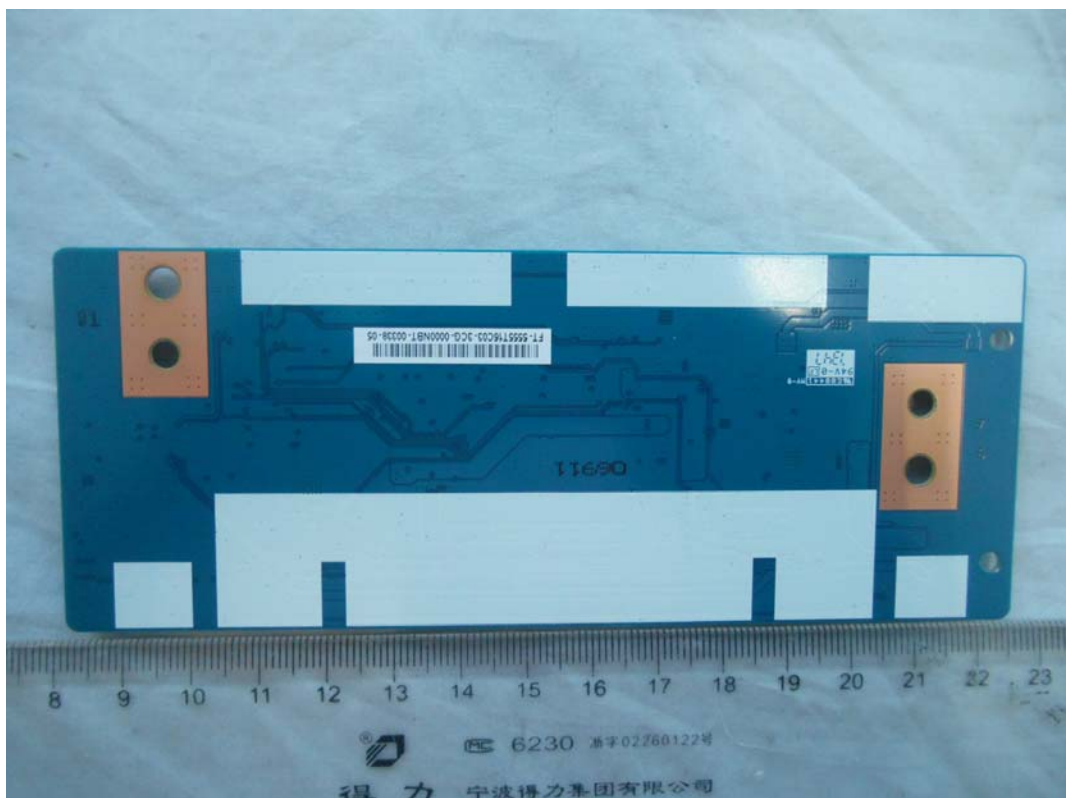




FIGURE 24  
LED LCD TV (M/N: 55H7EG)  
RF BOARDS LOCATION

