

FIGURE 1
LED LCD TV (M/N: 65H7G)
COVER REMOVED



FIGURE 2
LED LCD TV (M/N: 65H7G)
LCD PANEL LABEL



FIGURE 3
LED LCD TV (M/N: 65H7G)
POWER BOARD (COMPONENT SIDE)

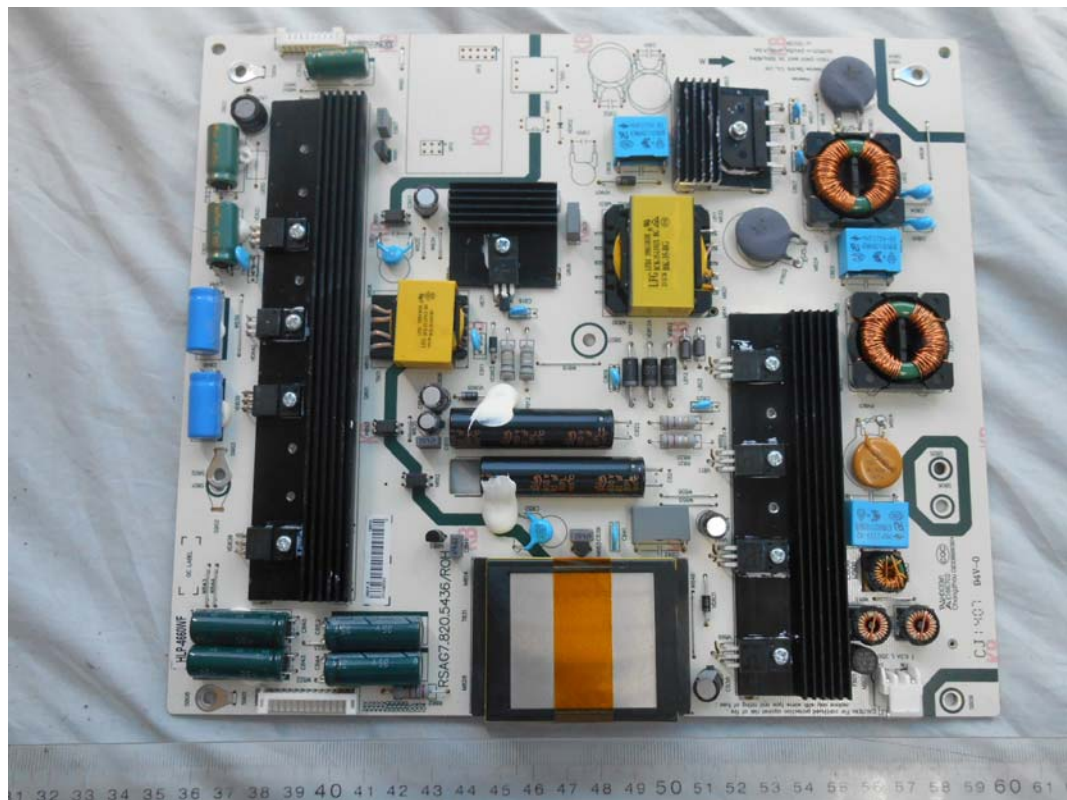


FIGURE 4
LED LCD TV (M/N: 65H7G)
POWER BOARD (SOLDERED SIDE)

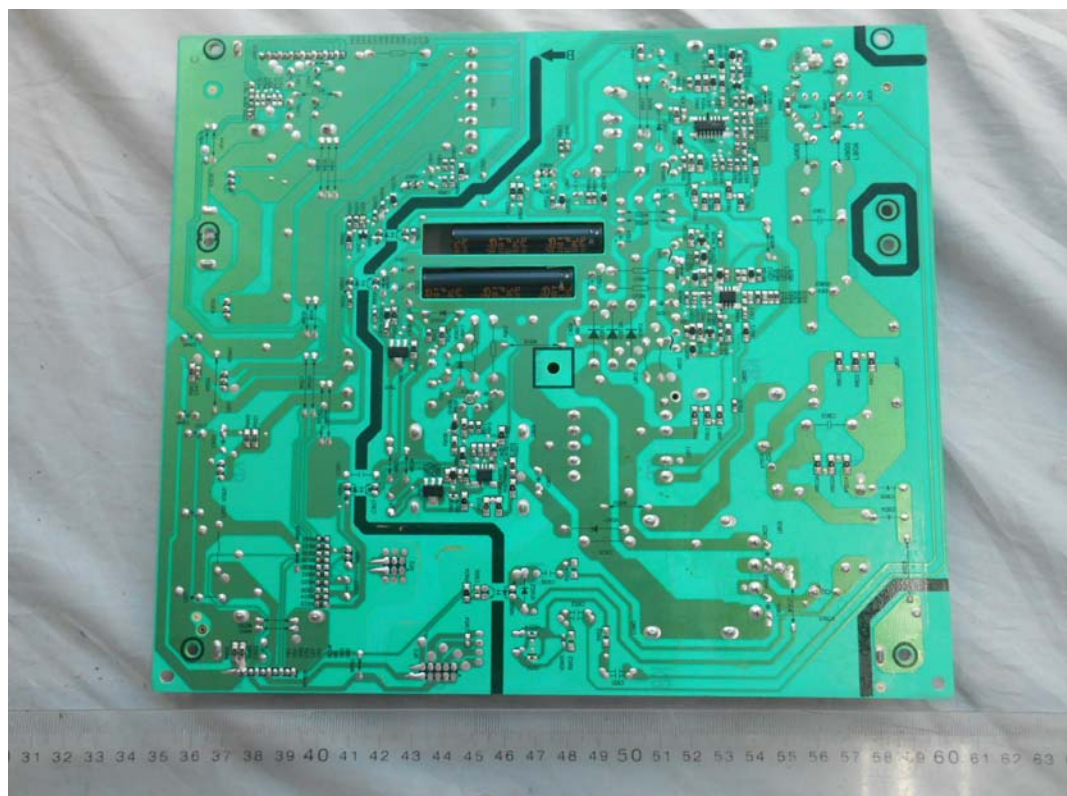


FIGURE 5
LED LCD TV (M/N: 65H7G)
MAIN BOARD (COMPONENT SIDE)



FIGURE 6
LED LCD TV (M/N: 65H7G)
MAIN BOARD (SOLDERED SIDE)

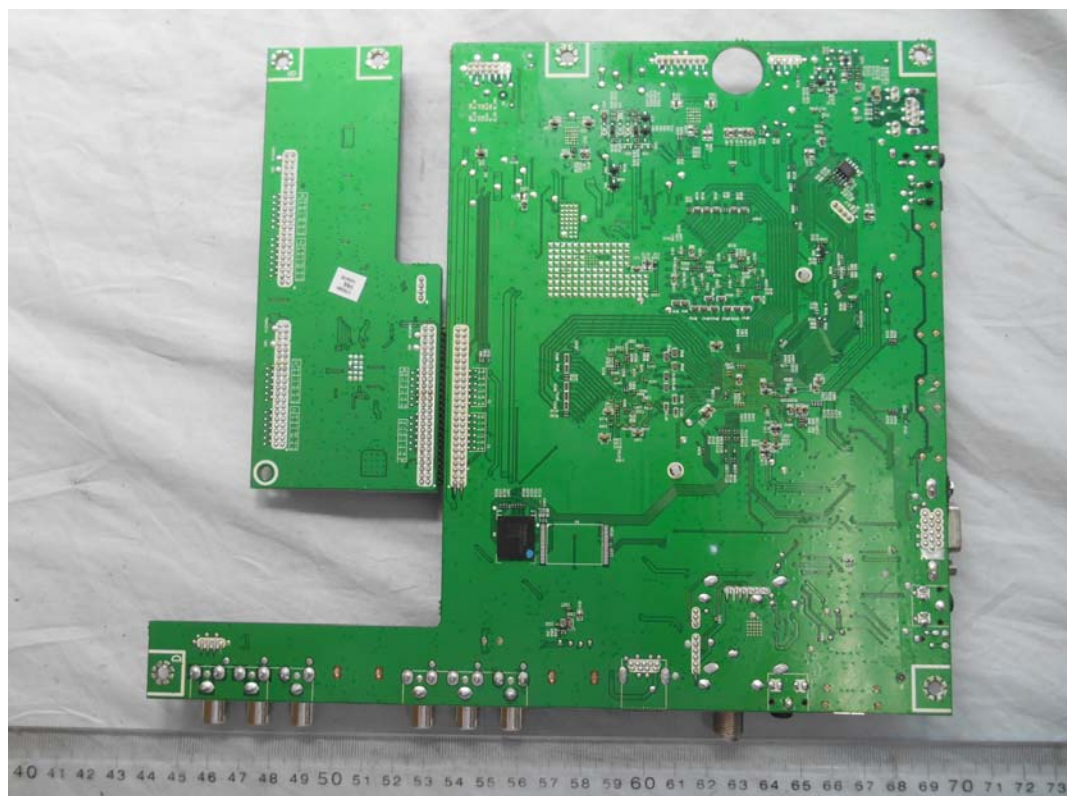


FIGURE 7
LED LCD TV(M/N: 65H7G)
CHIP #1 & CRYSTAL #1 ON MAIN BOARD

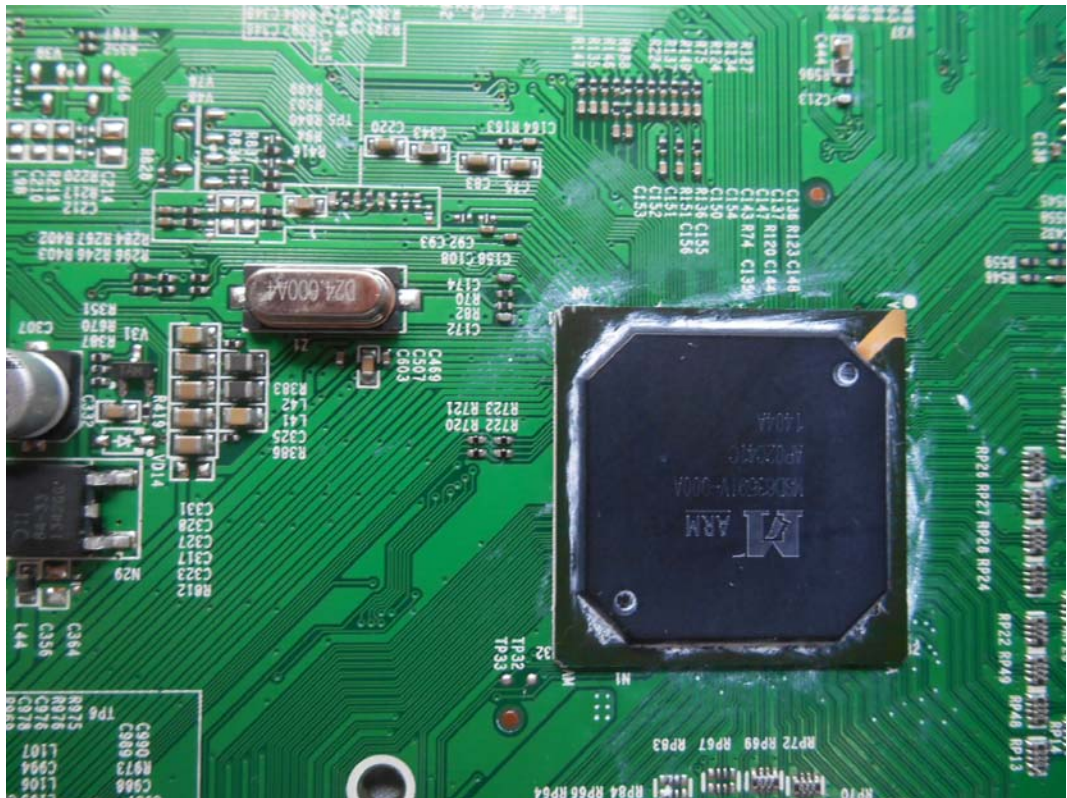


FIGURE 8
LED LCD TV(M/N: 65H7G)
CHIP #2 & CRYSTAL #2 ON MAIN BOARD

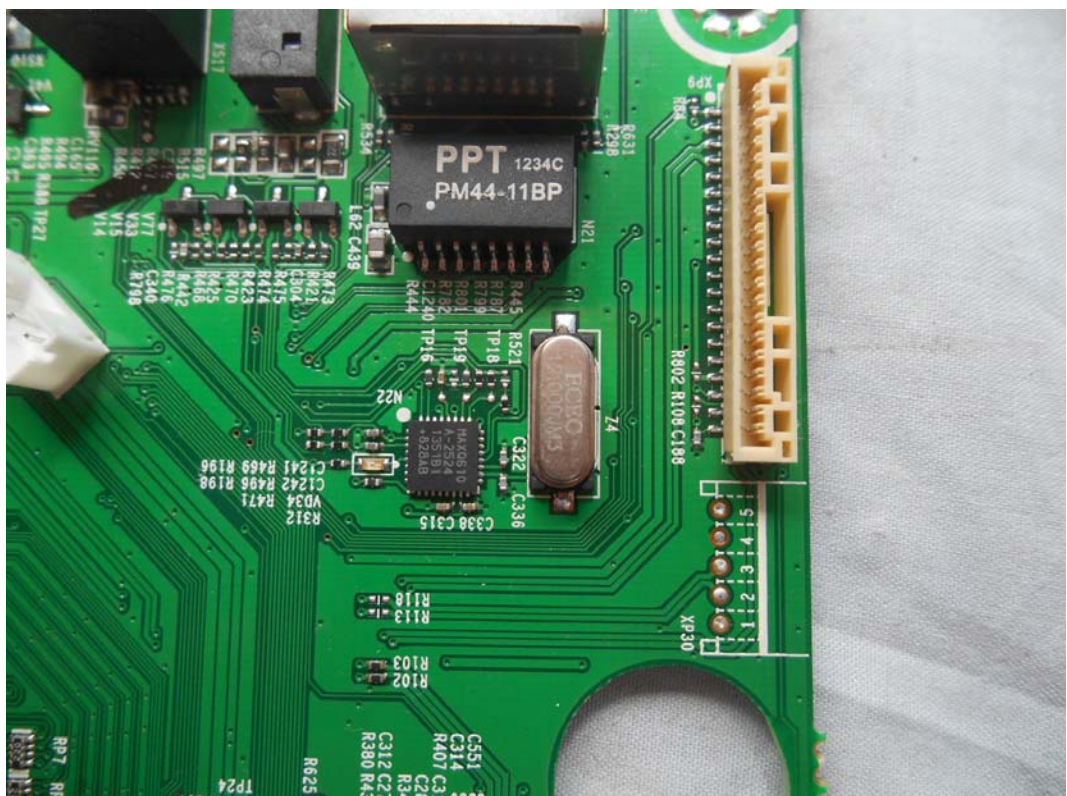


FIGURE 9
LED LCD TV(M/N: 65H7G)
CHIP #3 & CRYSTAL #3 ON MAIN BOARD

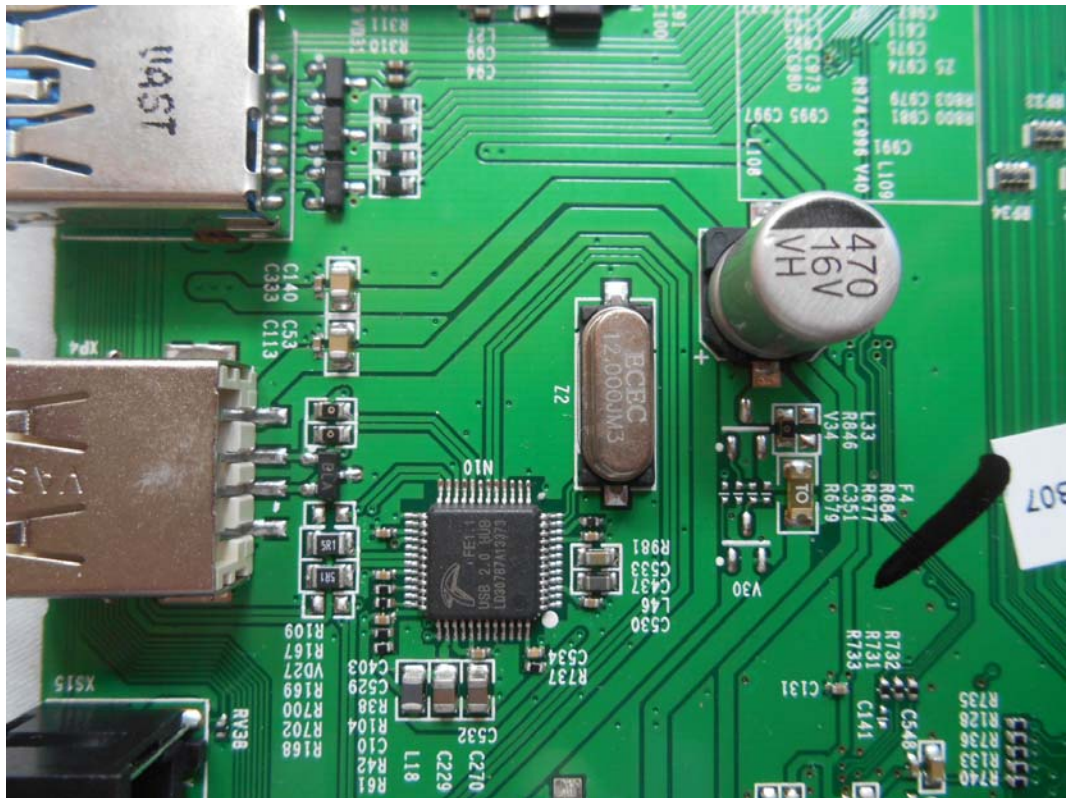


FIGURE 10
LED LCD TV(M/N: 65H7G)
CHIP #4 & CRYSTAL #4 ON MAIN BOARD



FIGURE 13
LED LCD TV (M/N: 65H7G)
KEY BOARD (COMPONENT SIDE)

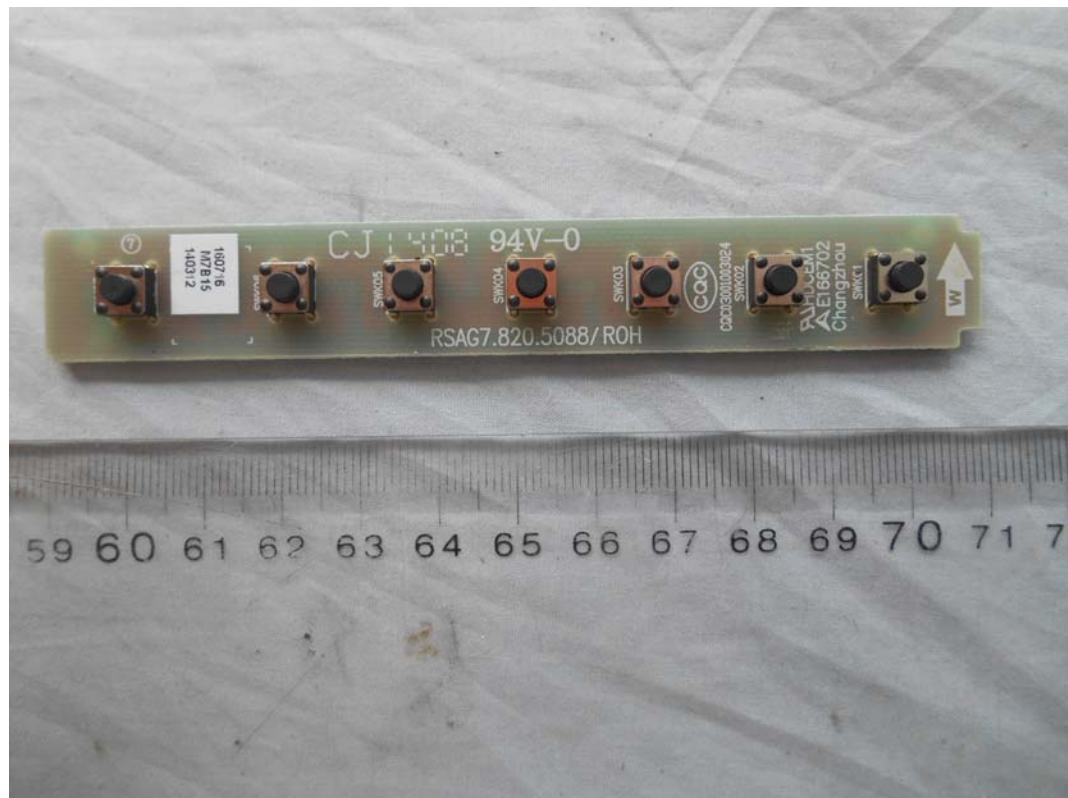


FIGURE 14
LED LCD TV (M/N: 65H7G)
KEY BOARD (SOLDERED SIDE)

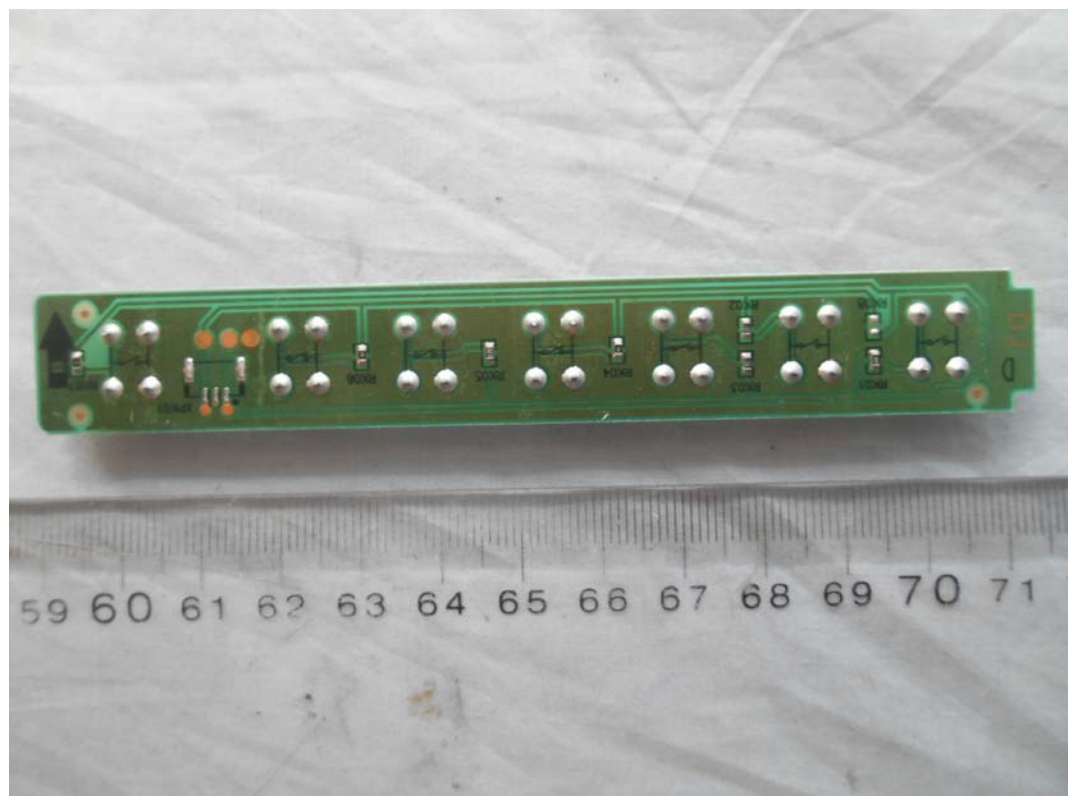


FIGURE 15
LED LCD TV (M/N: 65H7G)
SIGNAL BOARD (COMPONENT SIDE)

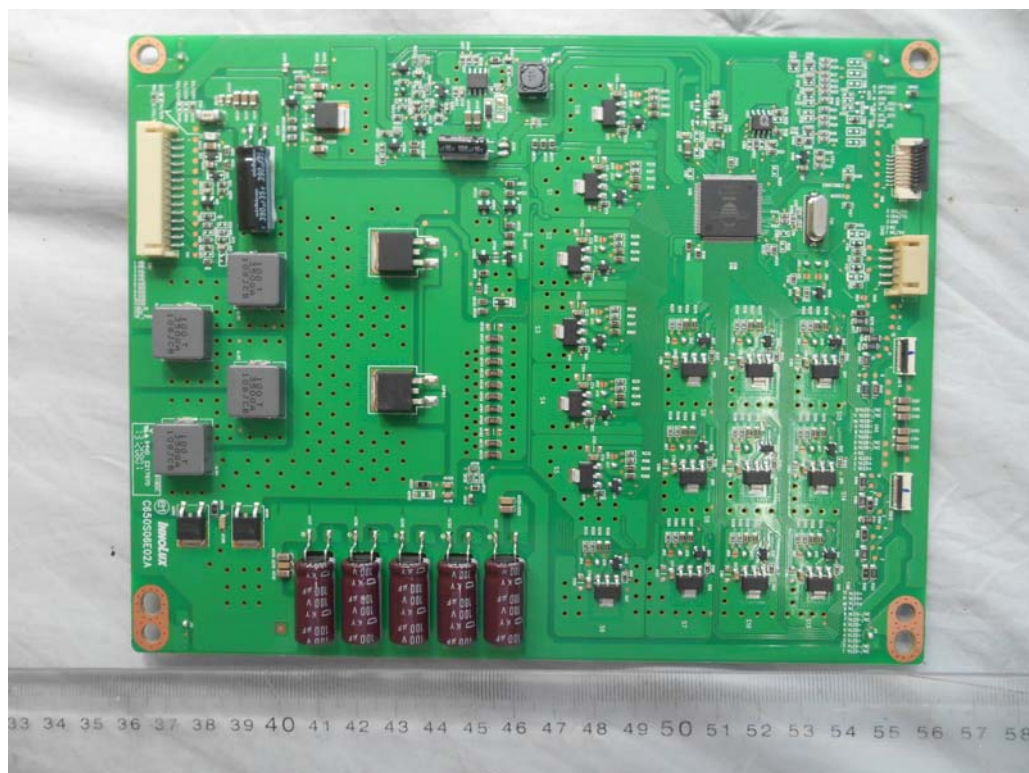


FIGURE 16
LED LCD TV (M/N: 65H7G)
SIGNAL BOARD (SOLDERED SIDE)

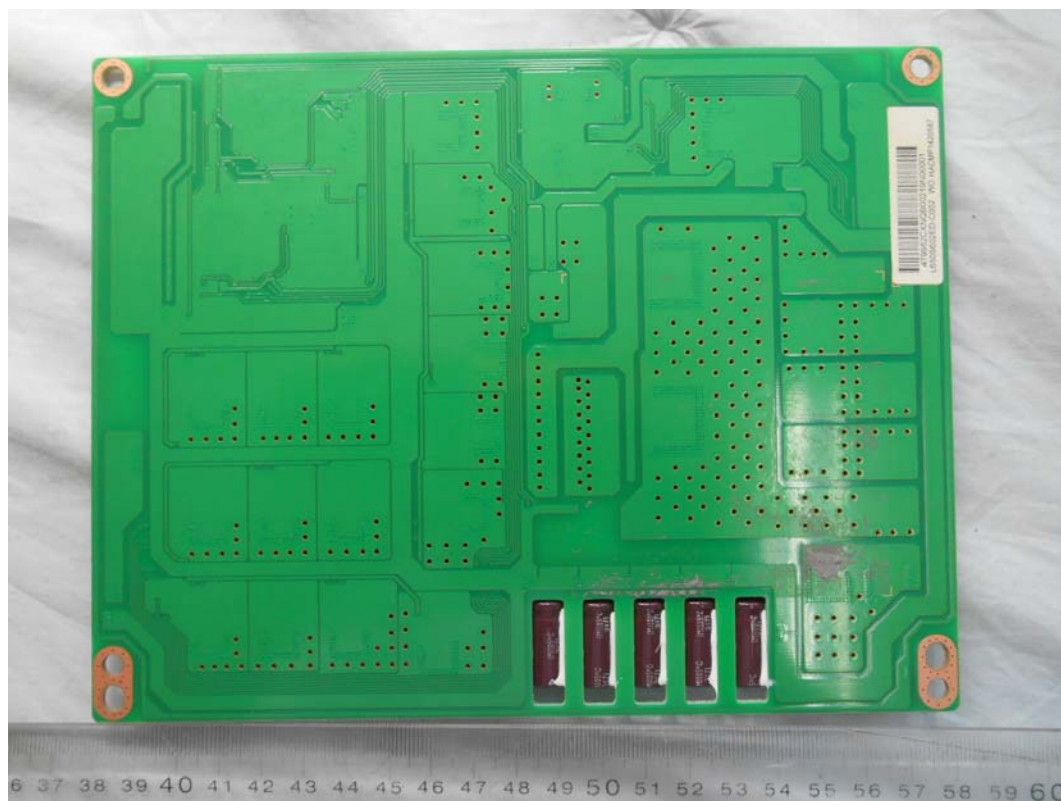


FIGURE 17
LED LCD TV (M/N: 65H7G)
CHIP & CRYSTAL ON SIGNAL BOARD

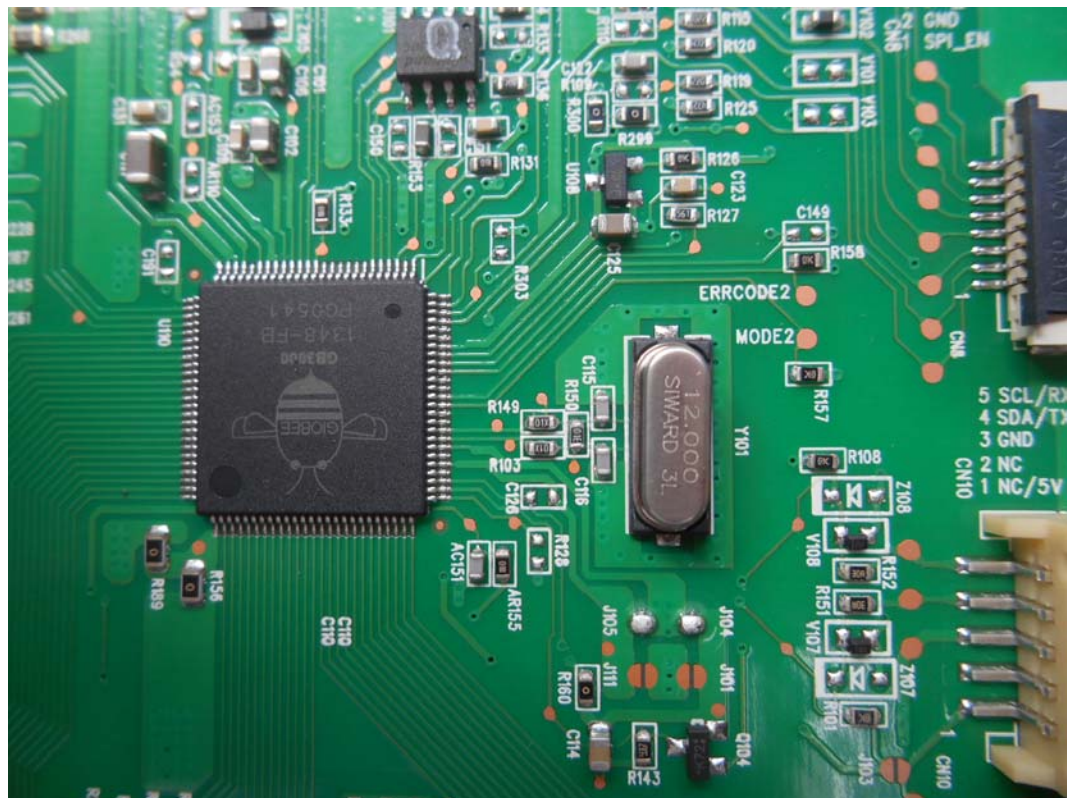


FIGURE 18
LED LCD TV (M/N: 65H7G)
IR BOARD (COMPONENT SIDE)

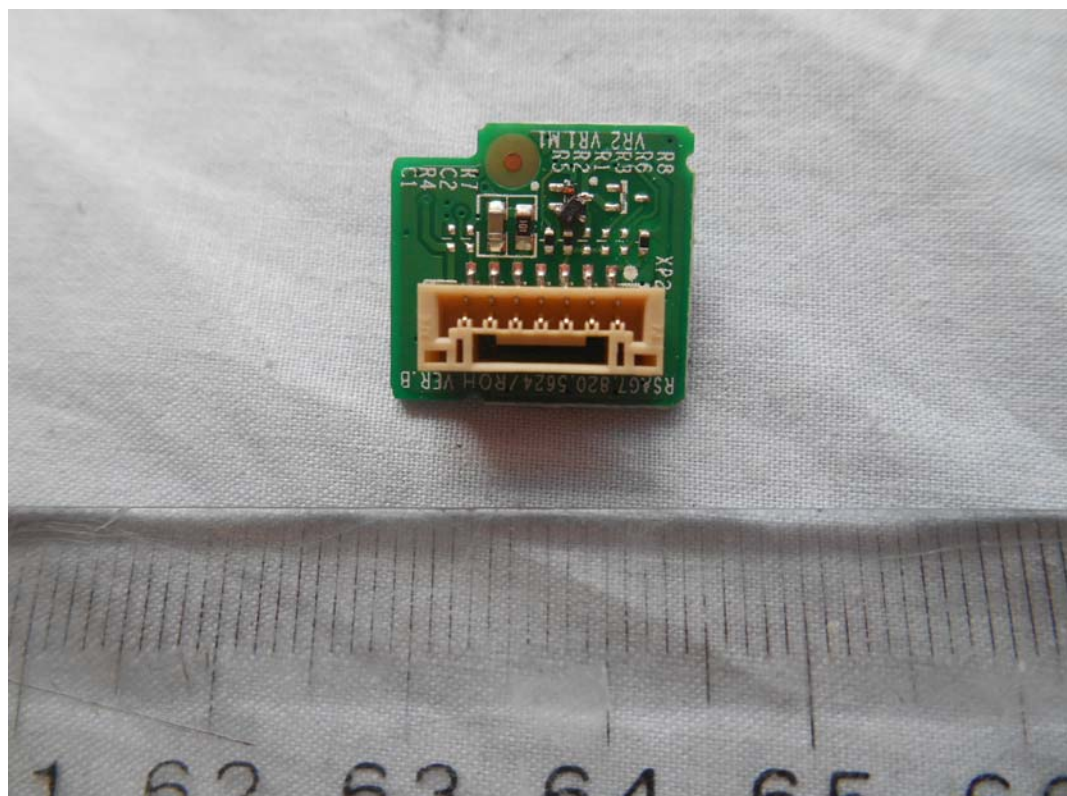


FIGURE 19
LED LCD TV (M/N: 65H7G)
IR BOARD (SOLDERED SIDE)

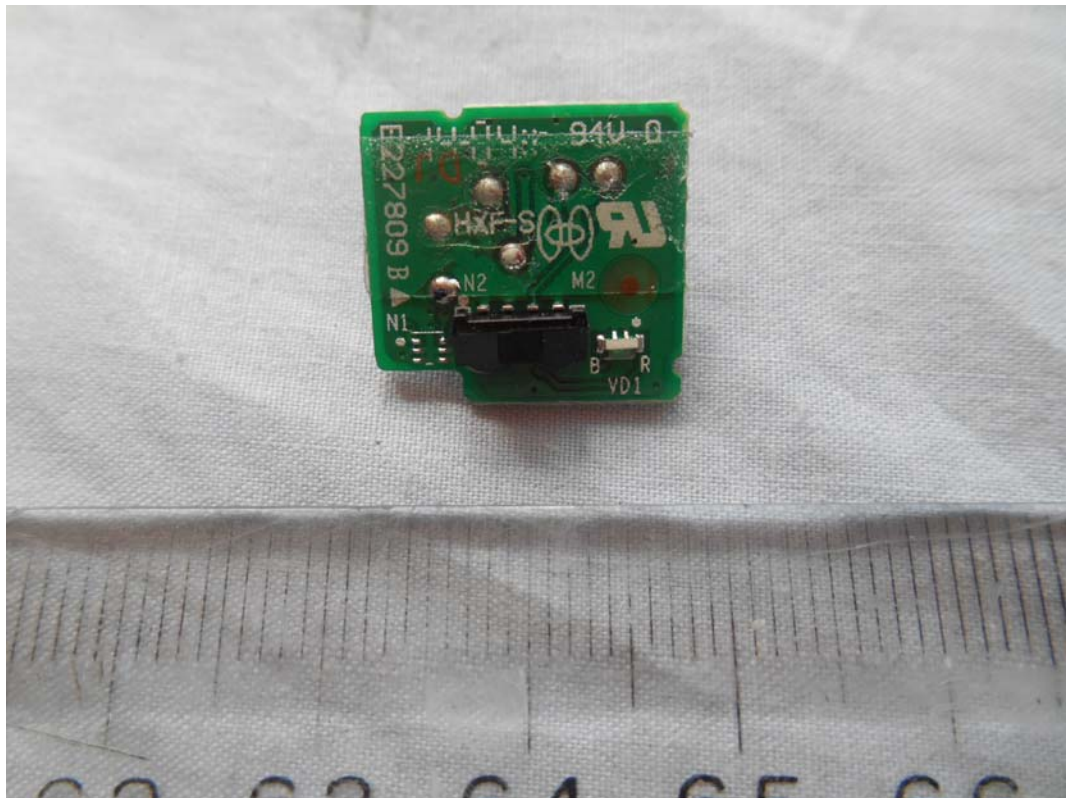


FIGURE 20
LED LCD TV (M/N: 65H7G)
RF BOARD #1 (COMPONENT SIDE)



FIGURE 21
LED LCD TV (M/N: 65H7G)
RF BOARD #1 (SOLDERED SIDE)

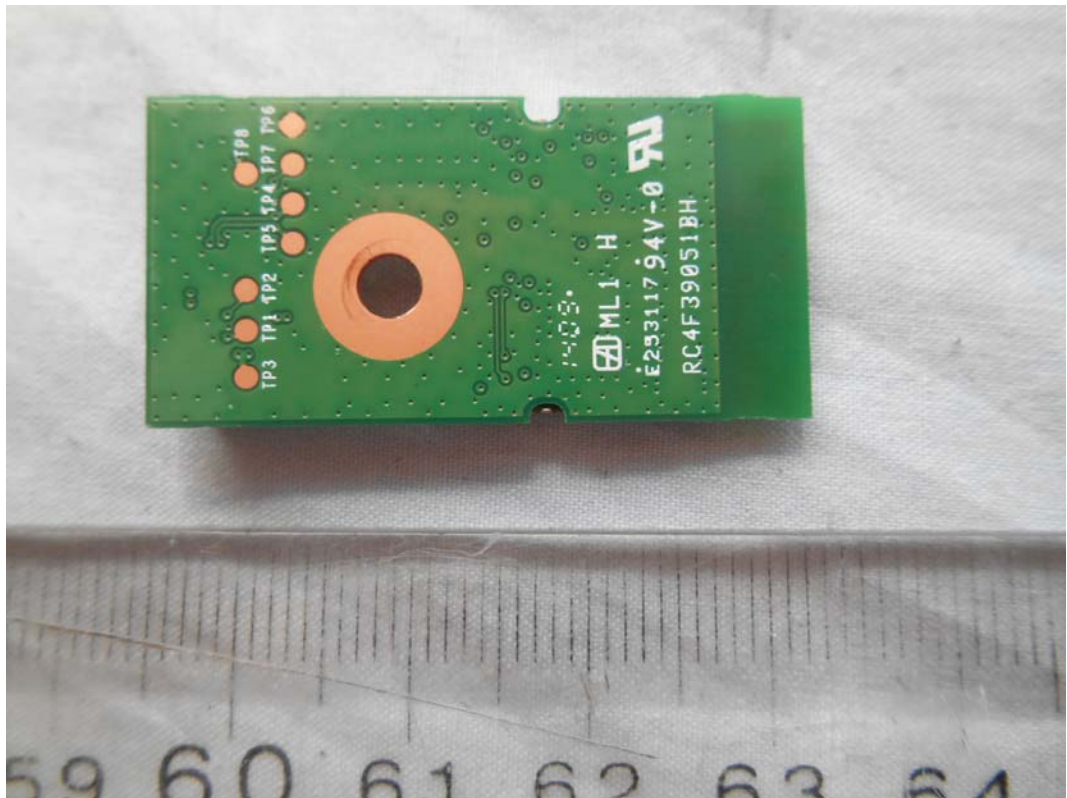


FIGURE 22
LED LCD TV (M/N: 65H7G)
RF BOARD #2 (COMPONENT SIDE)



FIGURE 23
LED LCD TV (M/N: 65H7G)
RF BOARD #2 (SOLDERED SIDE)

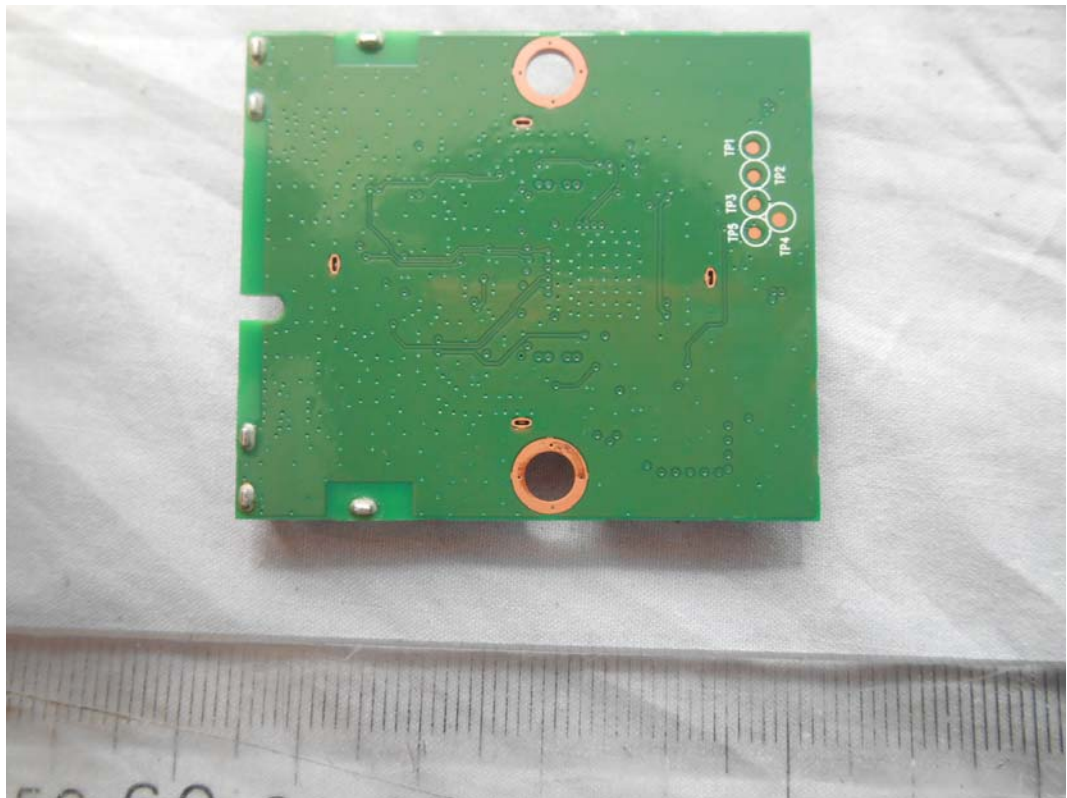
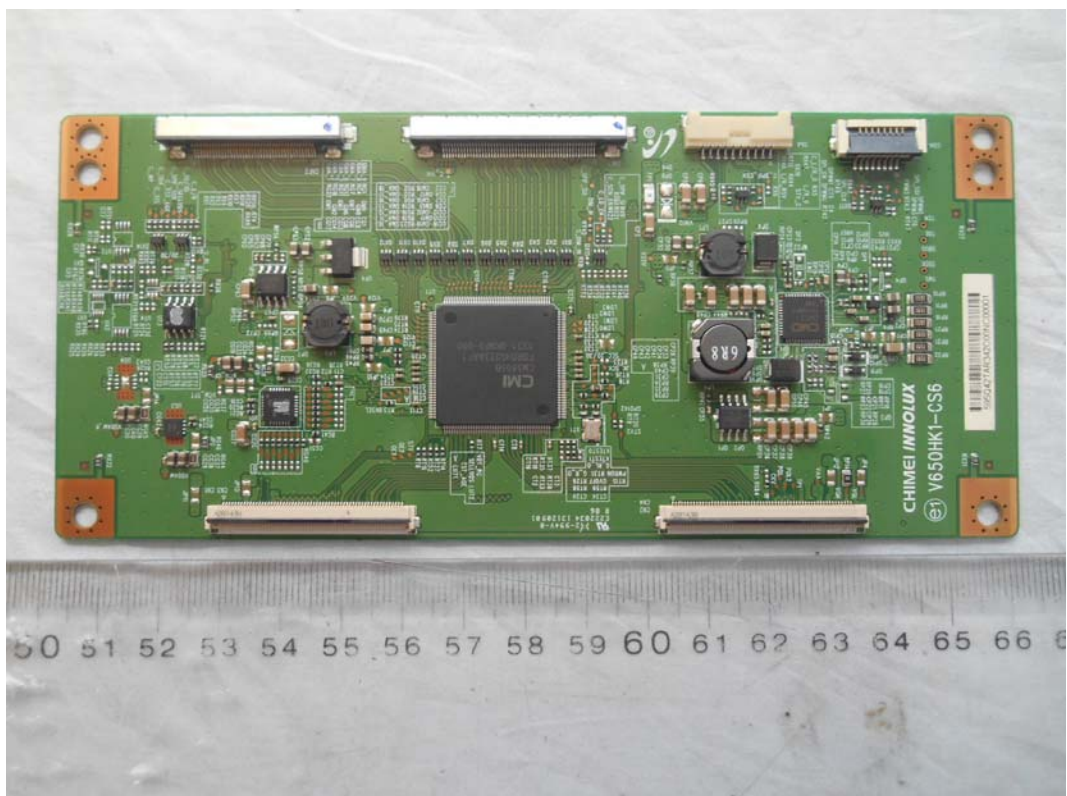


FIGURE 24
LED LCD TV (M/N: 65H7G)
LCD PANEL CONTROL BOARD (COMPONENT SIDE)



A photograph of a green printed circuit board (PCB) with a central square component and various traces. A ruler is placed below the board for scale, showing measurements from 51 to 67 cm.

FIGURE 27
LED LCD TV (M/N: 65H7G)
DEBUG #1



FIGURE 28
LED LCD TV (M/N: 65H7G)
DEBUG #2



FIGURE 29
LED LCD TV (M/N: 65H7G)
DEBUG #3

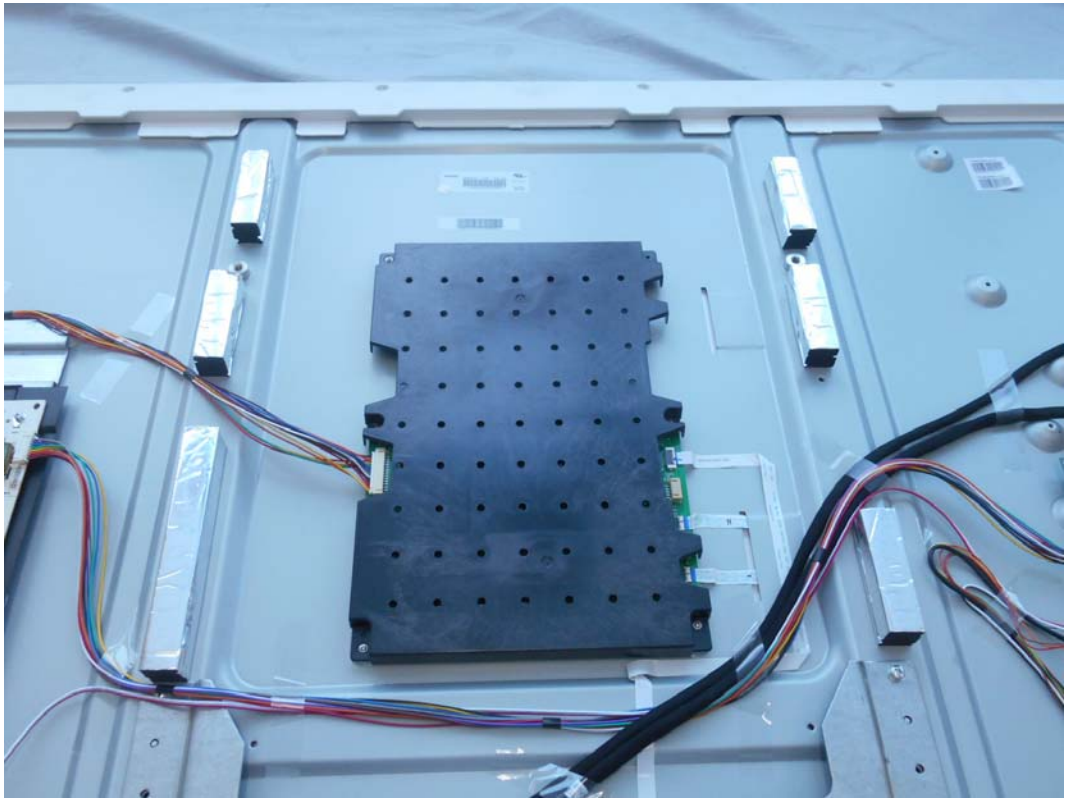


FIGURE 30
LED LCD TV (M/N: 65H7G)
DEBUG #4

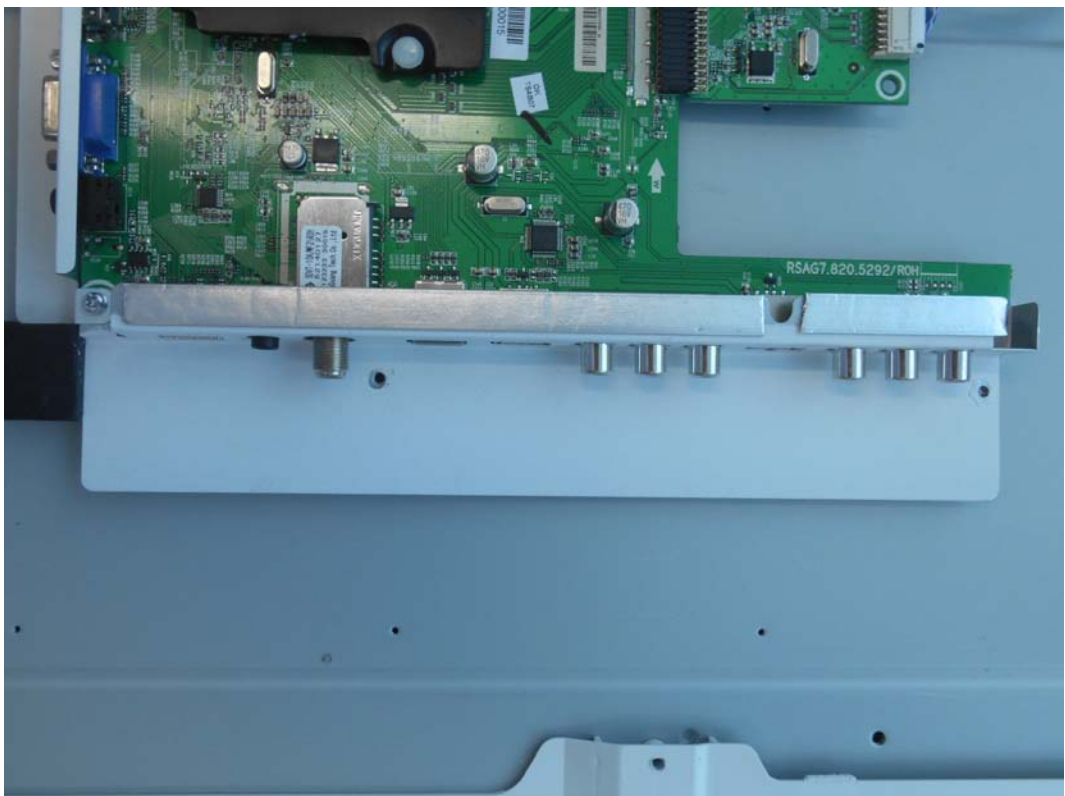


FIGURE 31
LED LCD TV (M/N: 65H7G)
LOCATION OF RF BOARD

