

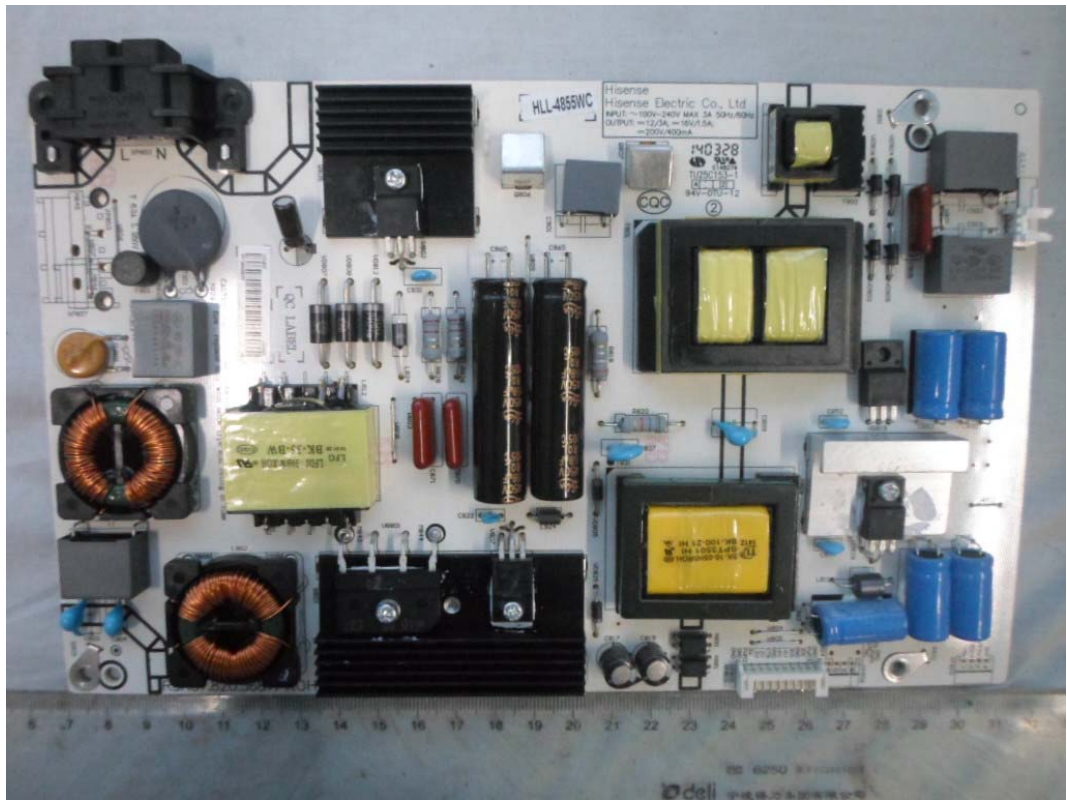
*FIGURE 1*  
*LED LCD TV (M/N: 50H4)*  
*COVER REMOVED*



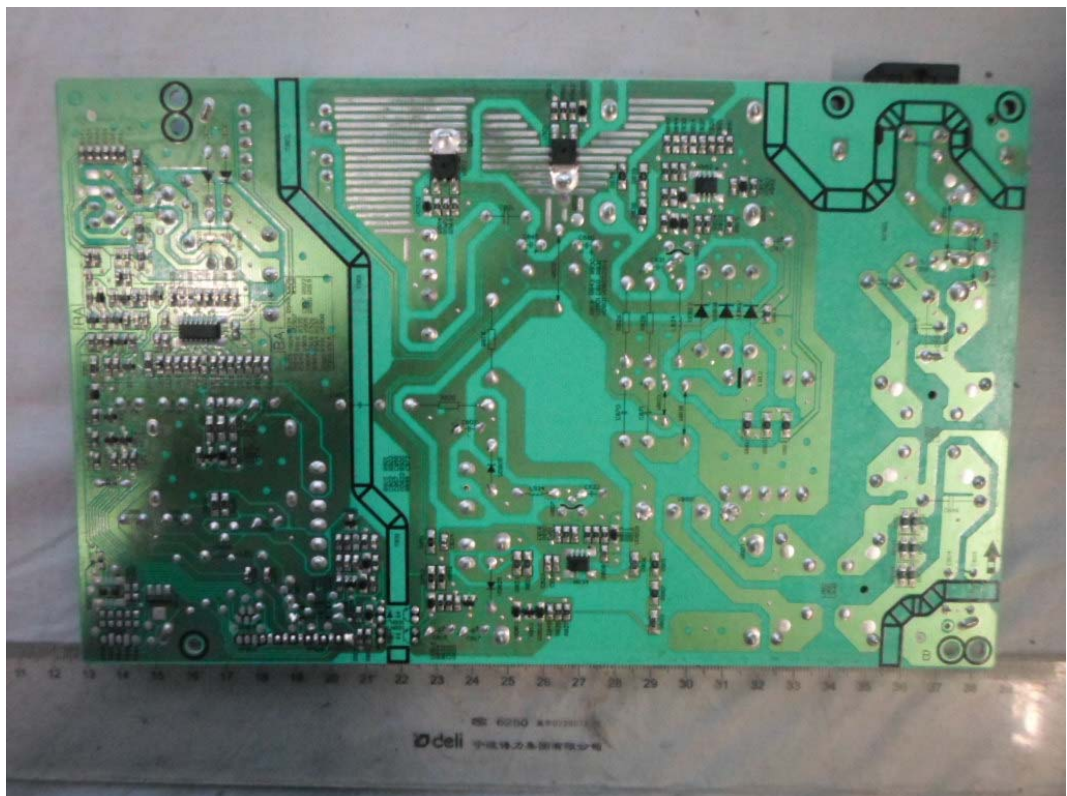
*FIGURE 2*  
*LED LCD TV (M/N: 50H4)*  
*LCD PANEL LABEL*



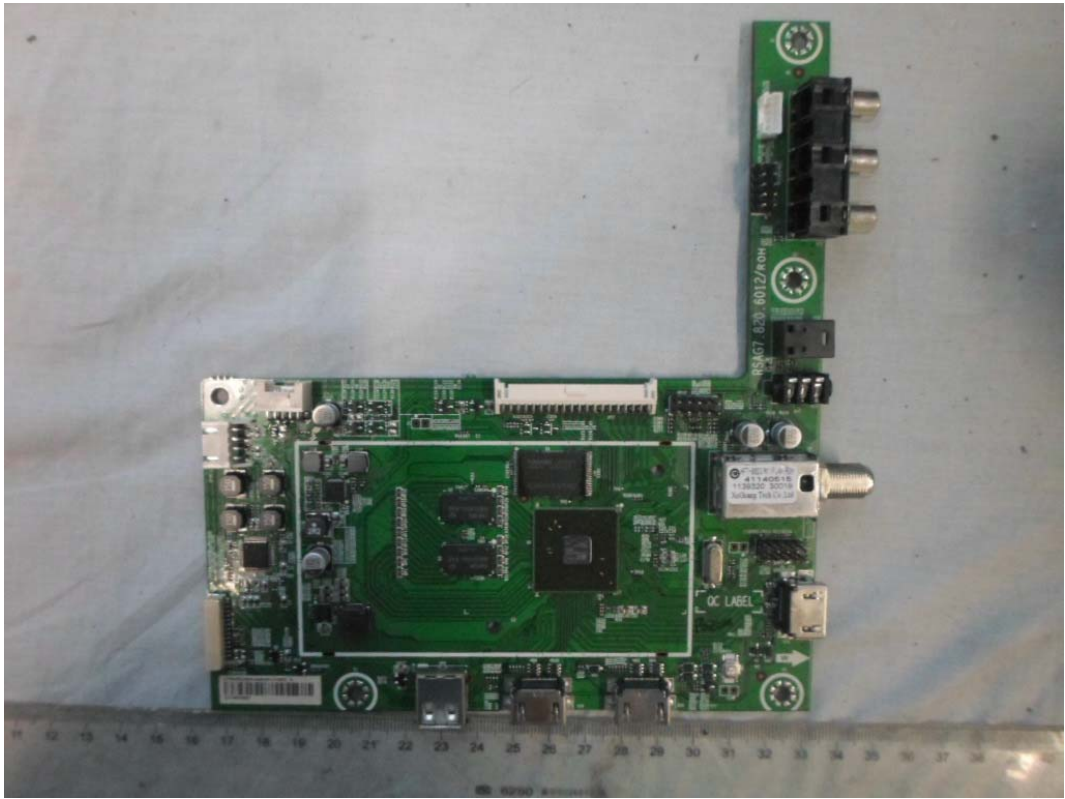
*FIGURE 3*  
*LED LCD TV (M/N: 50H4)*  
*POWER BOARD (COMPONENT SIDE)*



*FIGURE 4*  
*LED LCD TV (M/N: 50H4)*  
*POWER BOARD (SOLDERED SIDE)*



*FIGURE 5  
LED LCD TV (M/N: 50H4)  
MAIN BOARD (COMPONENT SIDE)*



*FIGURE 6  
LED LCD TV (M/N: 50H4)  
MAIN BOARD (SOLDERED SIDE)*

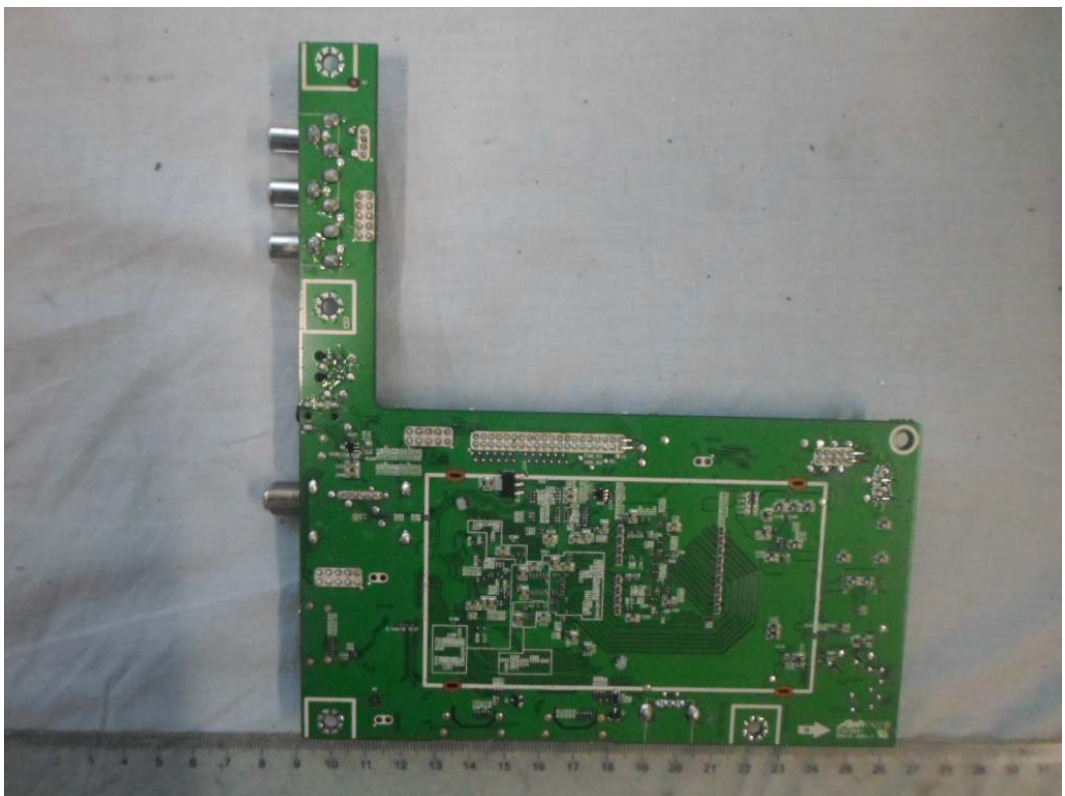


FIGURE 7  
LED LCD TV (M/N: 50H4)  
CRYSTAL ON MAIN BOARD

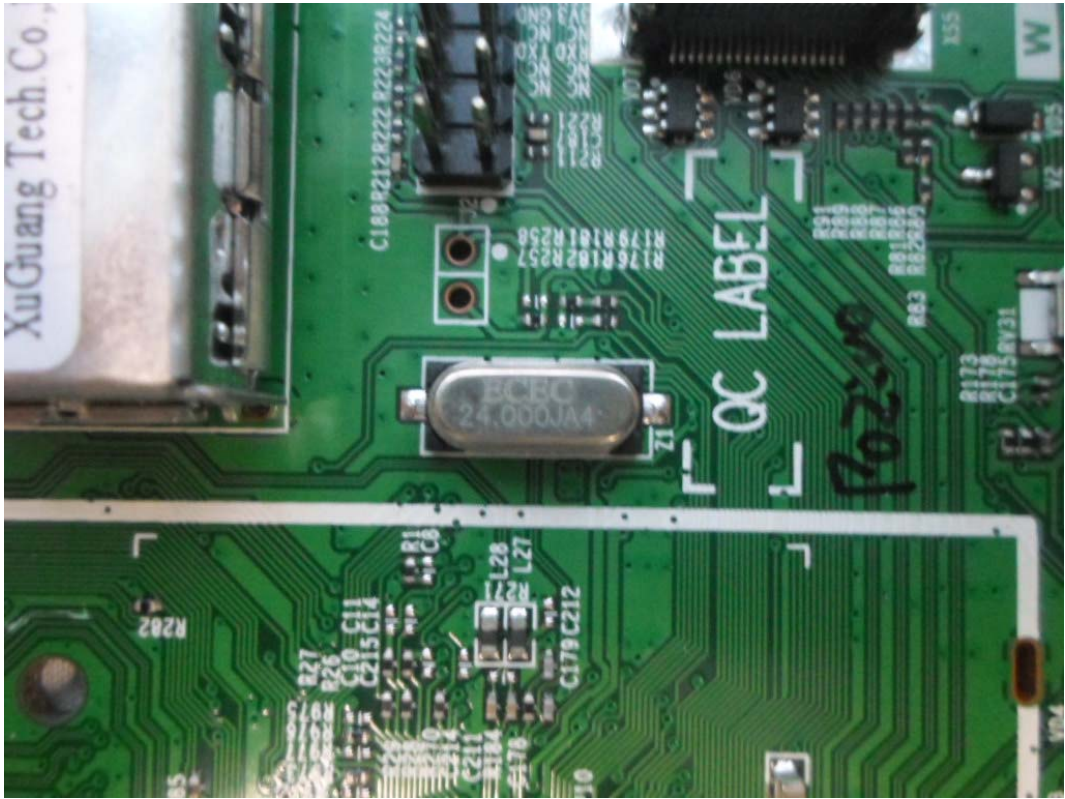


FIGURE 8  
LED LCD TV (M/N: 50H4)  
CHIP ON MAIN BOARD

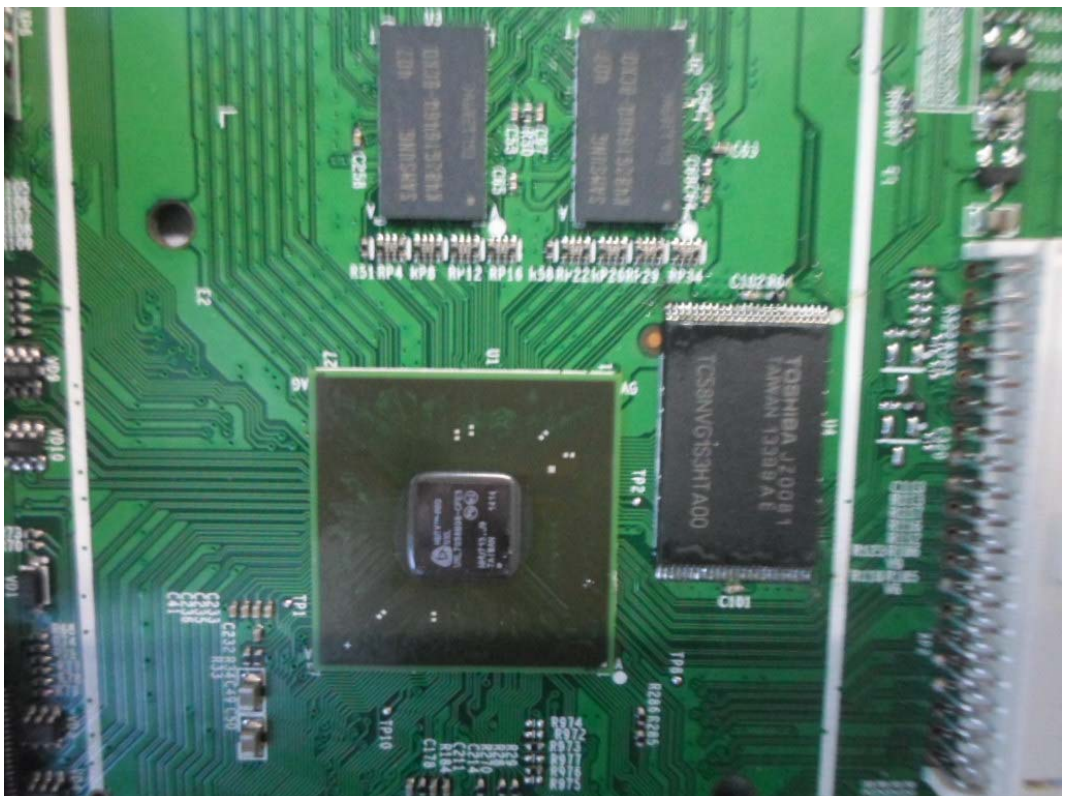


FIGURE 9  
LED LCD TV (M/N: 50H4)  
TUNER ON MAIN BOARD



FIGURE 10  
LED LCD TV (M/N: 50H4)  
KEY BOARD (COMPONENT SIDE)



FIGURE 11  
LED LCD TV (M/N: 50H4)  
KEY BOARD (SOLDERED SIDE)

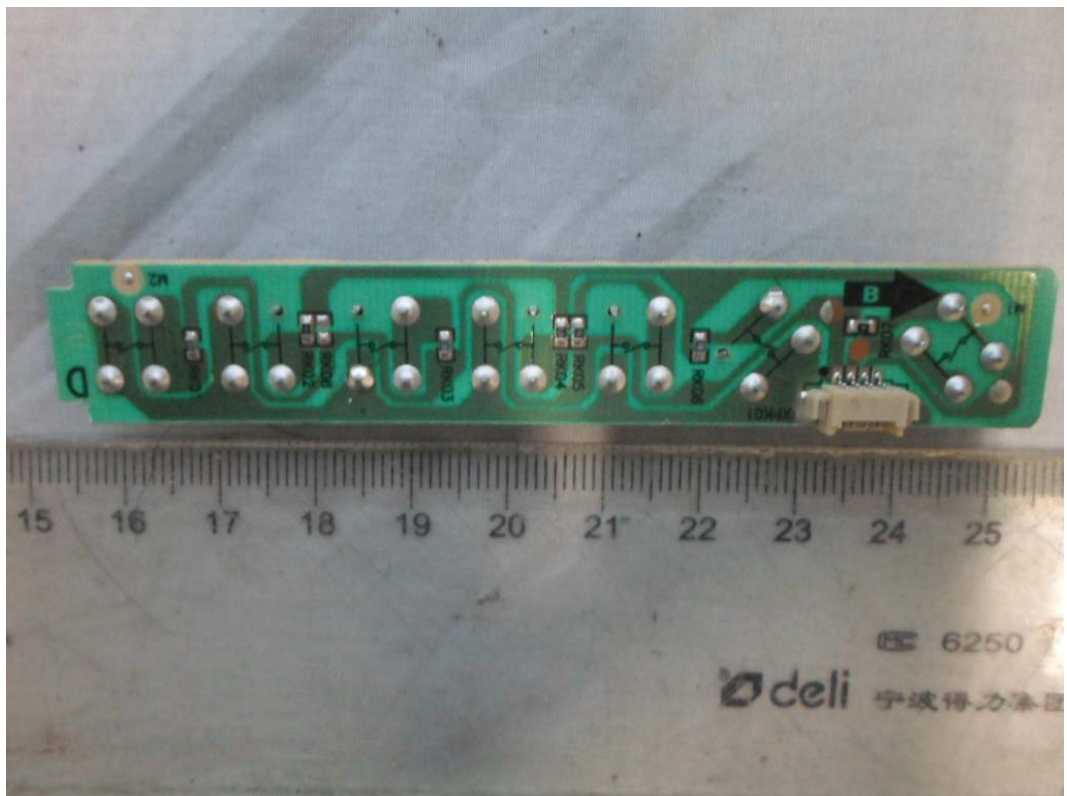


FIGURE 12  
LED LCD TV (M/N: 50H4)  
IR BOARD (COMPONENT SIDE)

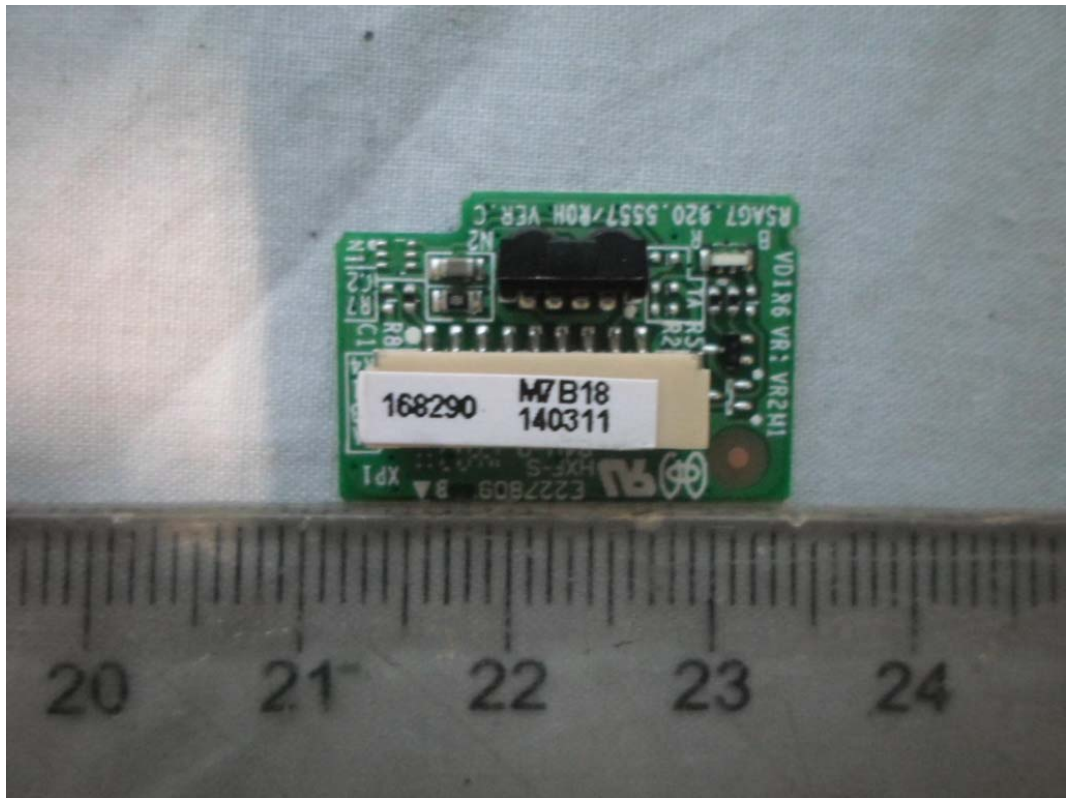
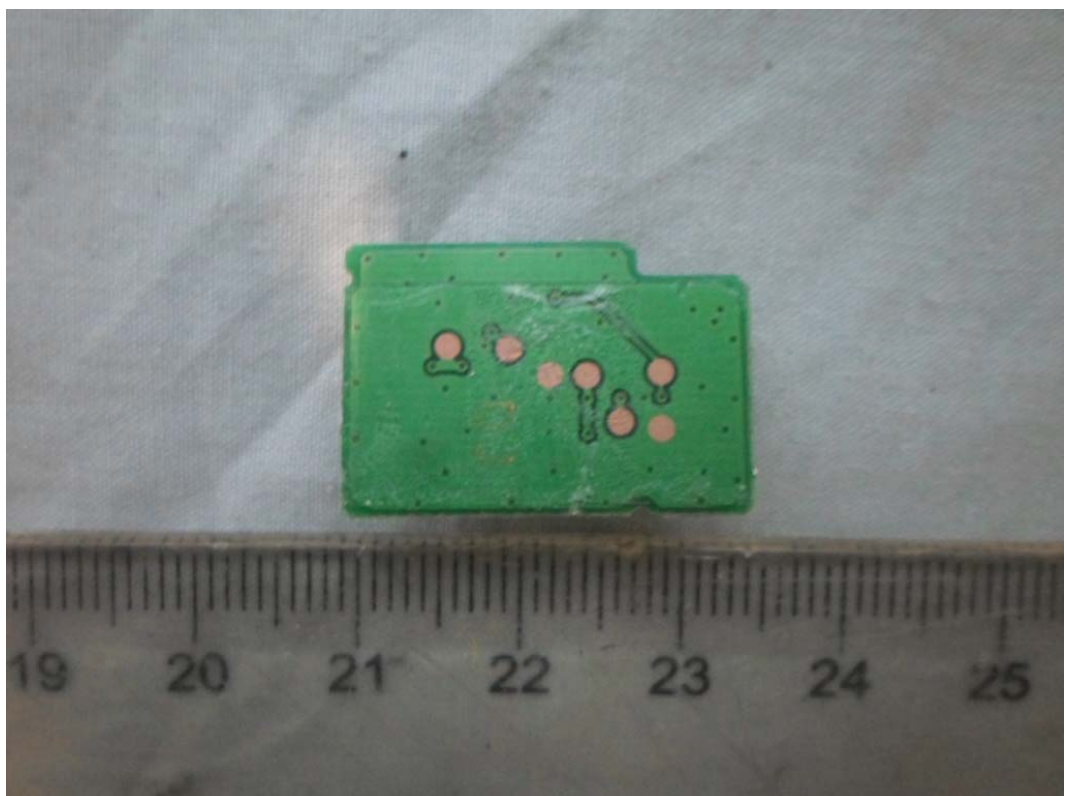


FIGURE 13  
LED LCD TV (M/N: 50H4)  
IR BOARD (SOLDERED SIDE)



*FIGURE 14  
LED LCD TV (M/N: 50H4)  
RF BOARD (COMPONENT SIDE)*



*FIGURE 15  
LED LCD TV (M/N: 50H4)  
RF BOARD (SOLDERED SIDE)*

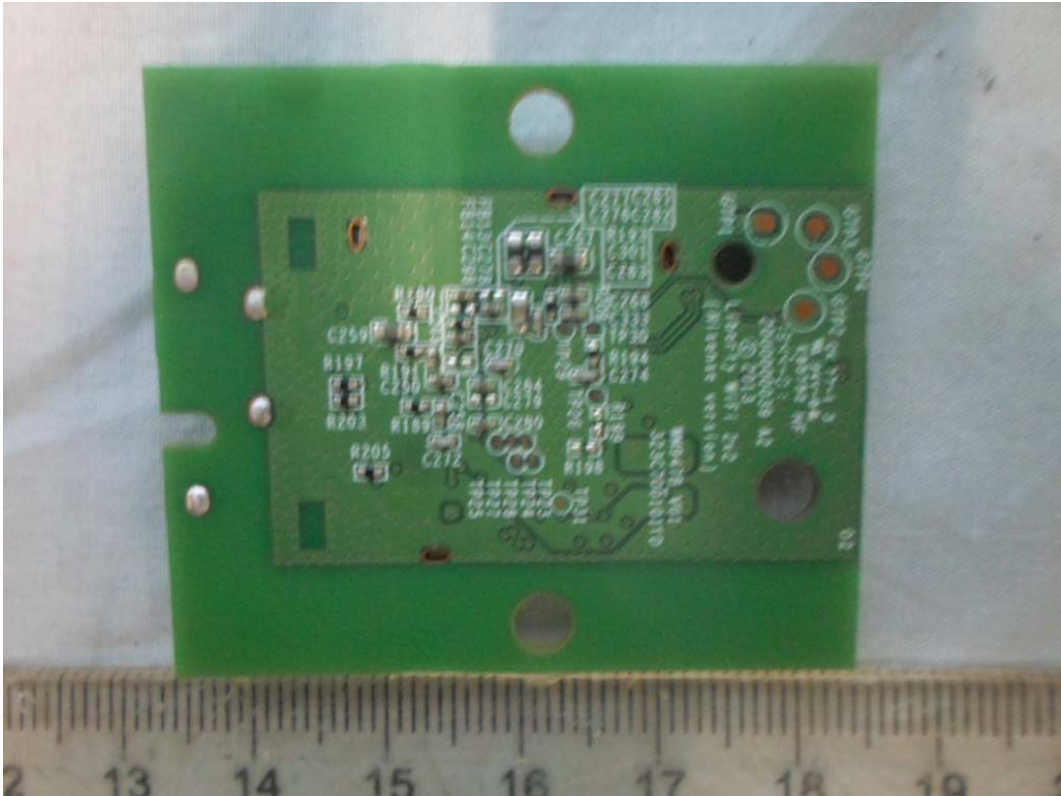




FIGURE 16  
LED LCD TV (M/N: 50H4)  
LCD PANEL CONTROL BOARD (COMPONENT SIDE)

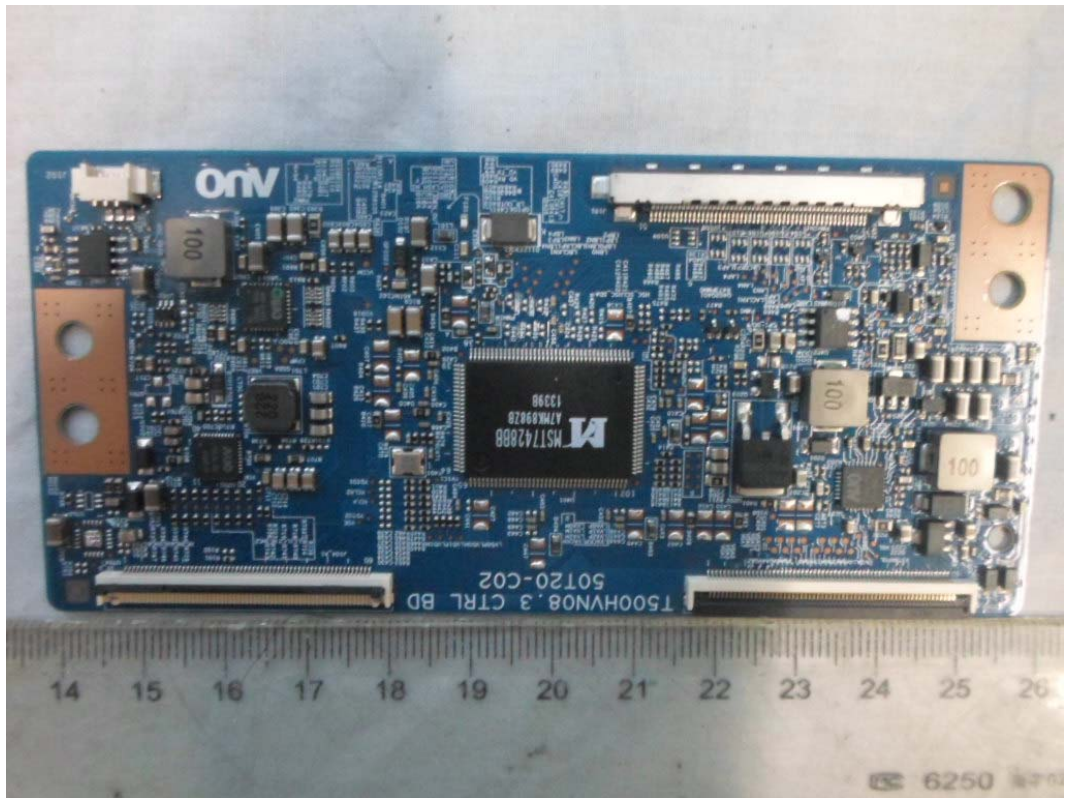


FIGURE 17  
LED LCD TV (M/N: 50H4)  
LCD PANEL CONTROL BOARD (SOLDERED SIDE)

