

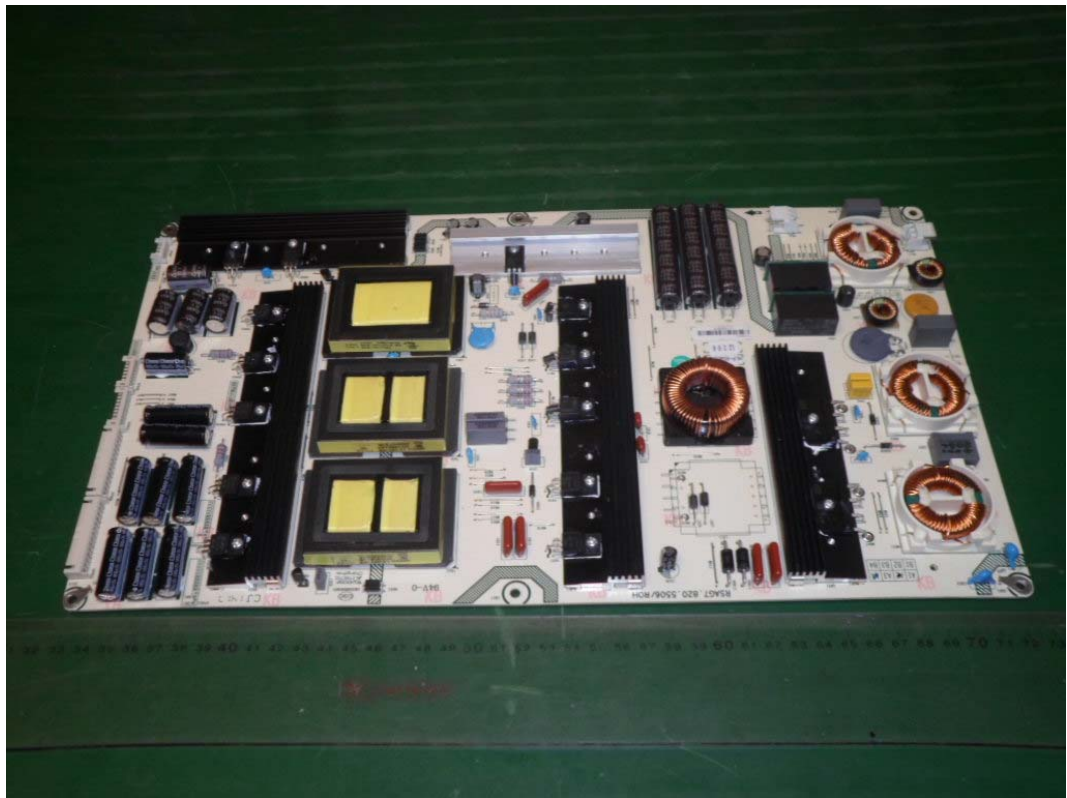
*FIGURE 1*  
*LED LCD TV (M/N: 75H9)*  
*COVER REMOVED*



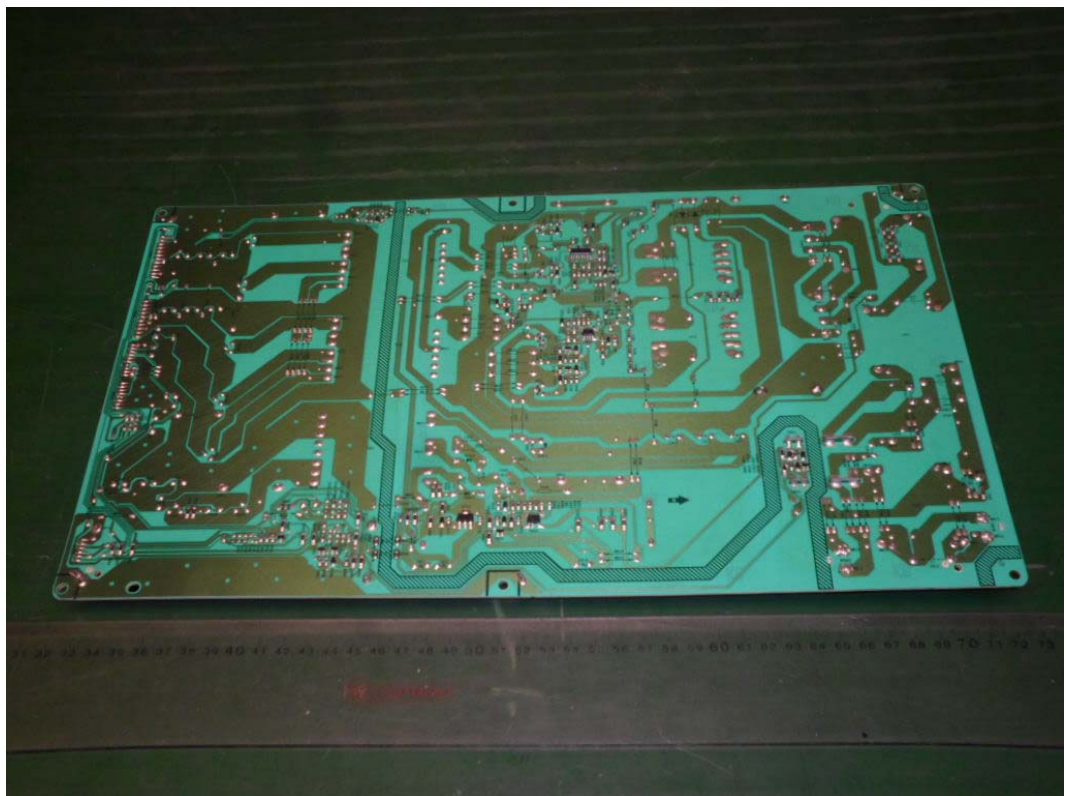
*FIGURE 2*  
*LED LCD TV (M/N: 75H9)*  
*LCD PANEL LABEL*



*FIGURE 3*  
*LED LCD TV (M/N: 75H9)*  
*POWER BOARD #1 (COMPONENT SIDE)*



*FIGURE 4*  
*LED LCD TV (M/N: 75H9)*  
*POWER BOARD #1 (SOLDERED SIDE)*

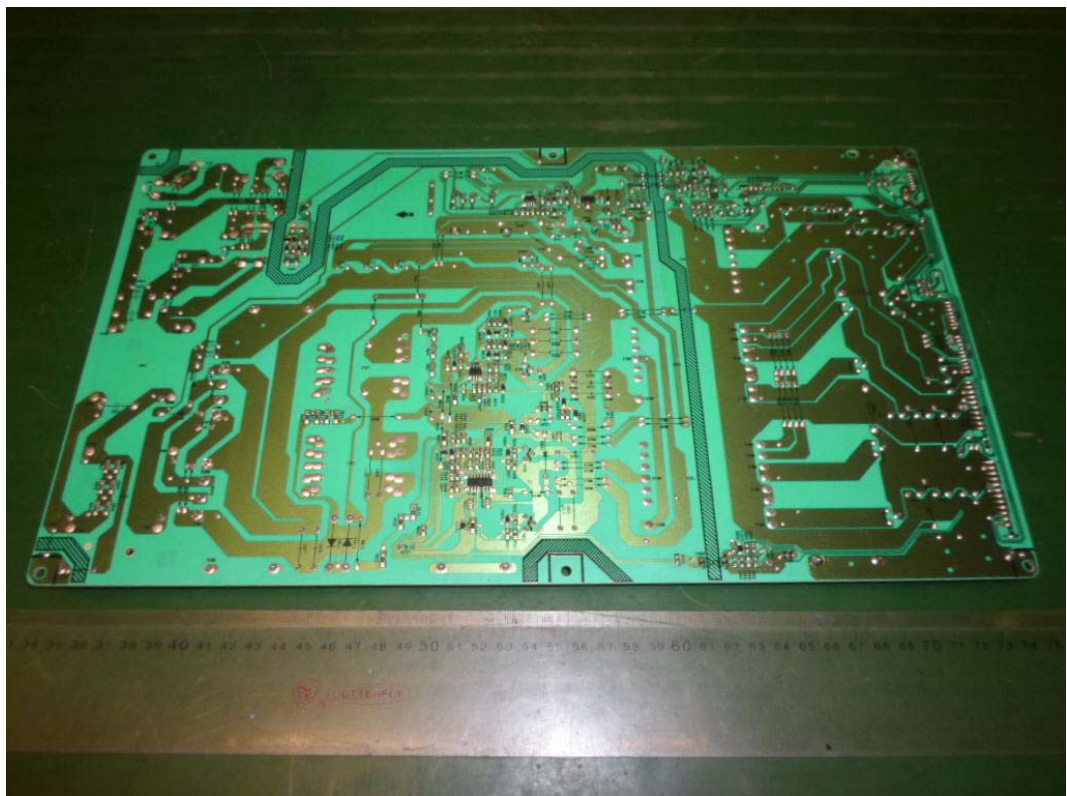




*FIGURE 5*  
*LED LCD TV (M/N: 75H9)*  
*POWER BOARD #2 (COMPONENT SIDE)*



*FIGURE 6*  
*LED LCD TV (M/N: 75H9)*  
*POWER BOARD #2 (SOLDERED SIDE)*



*FIGURE 7*  
*LED LCD TV (M/N: 75H9)*  
*MAIN BOARD (COMPONENT SIDE)*



*FIGURE 8*  
*LED LCD TV (M/N: 75H9)*  
*MAIN BOARD (SOLDERED SIDE)*

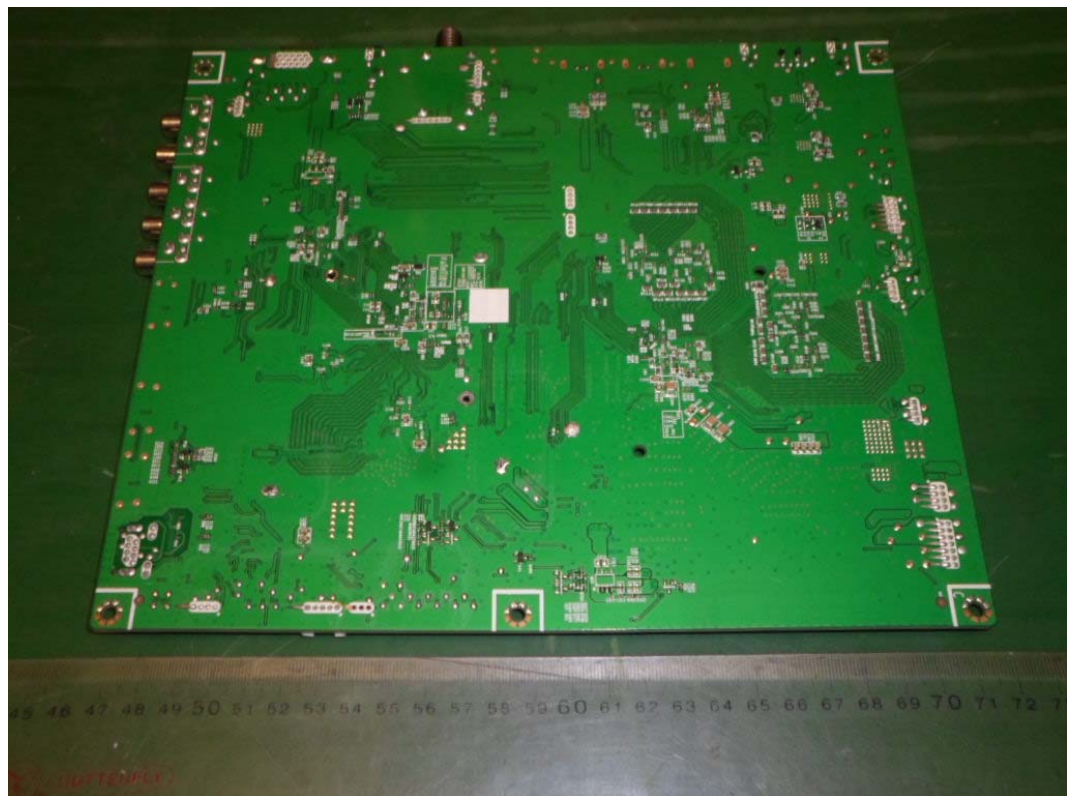




FIGURE 9  
LED LCD TV (M/N: 75H9)  
CRYSTAL #1 ON MAIN BOARD



FIGURE 10  
LED LCD TV (M/N: 75H9)  
CRYSTAL #2 ON MAIN BOARD

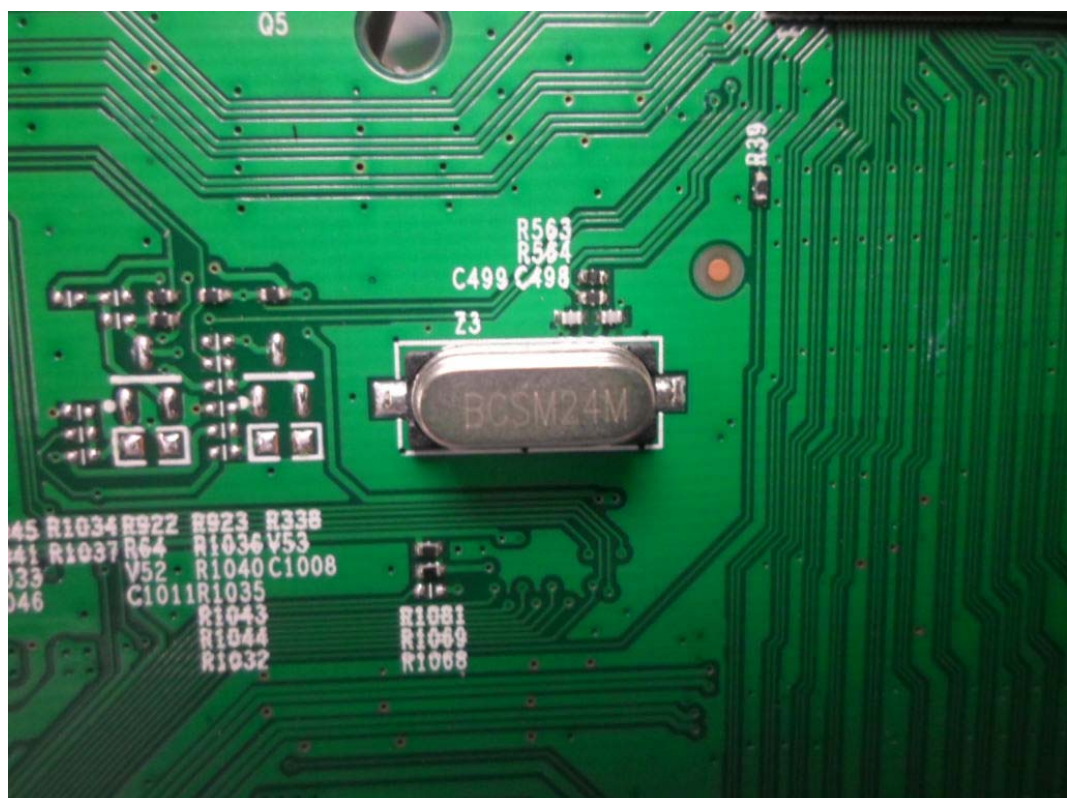




FIGURE 11  
LED LCD TV (M/N: 75H9)  
CRYSTAL #3 ON MAIN BOARD

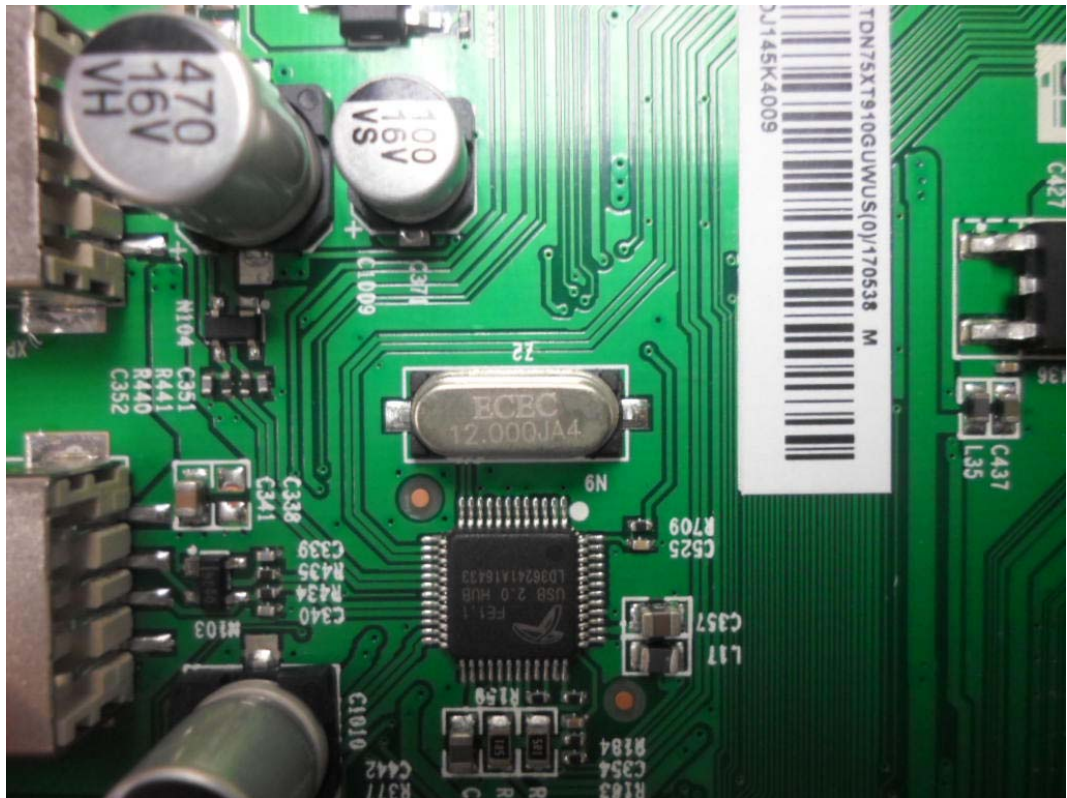


FIGURE 12  
LED LCD TV (M/N: 75H9)  
CHIP #1 ON MAIN BOARD

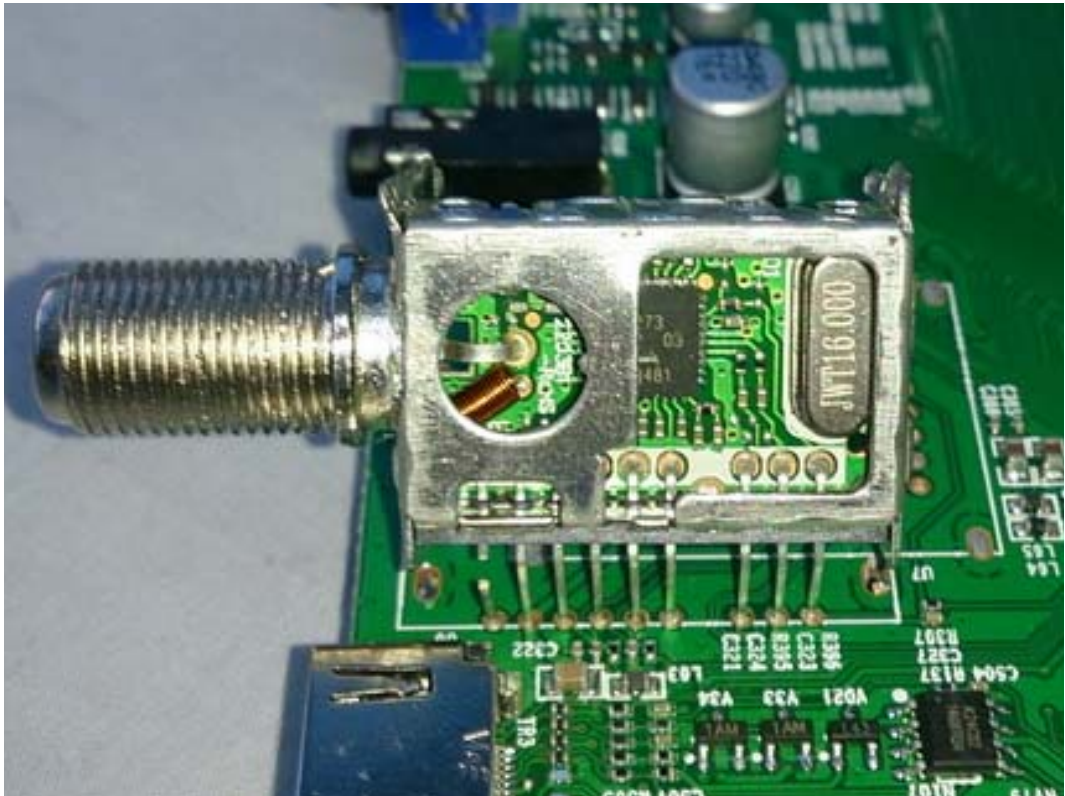




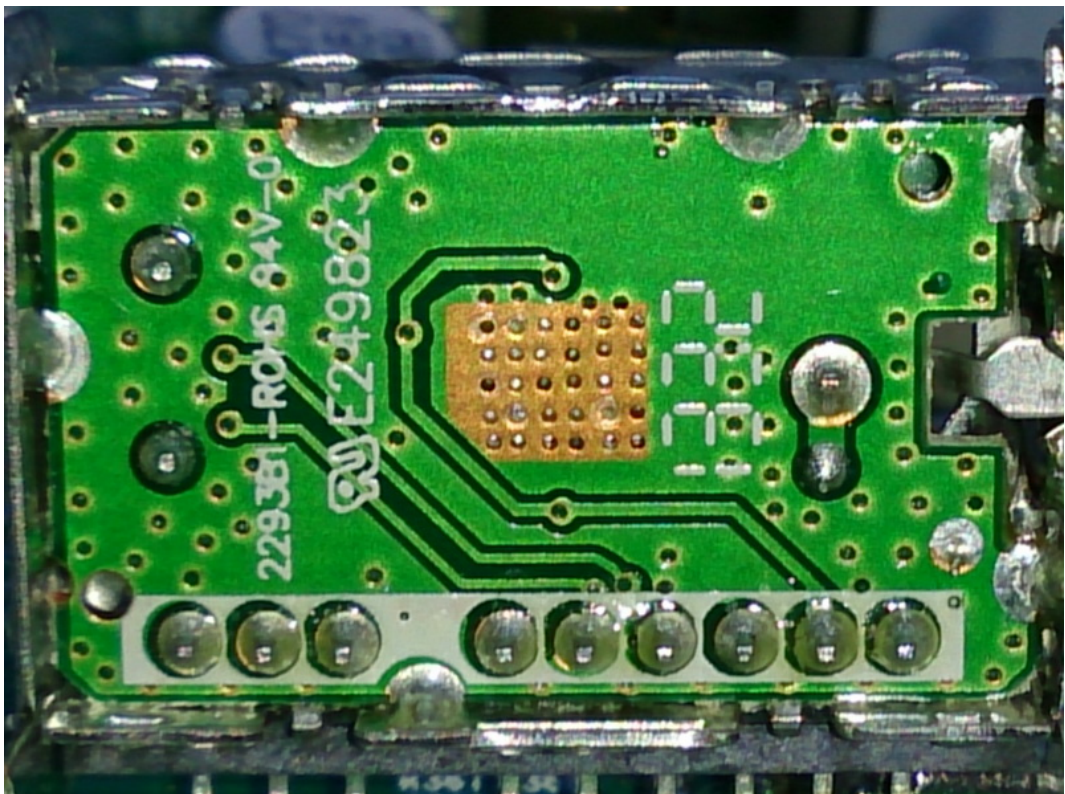




*FIGURE 15*  
*LED LCD TV (M/N: 75H9)*  
*TUNER BOARD (COMPONENT SIDE)*



*FIGURE 16*  
*LED LCD TV (M/N: 75H9)*  
*TUNER BOARD (SOLDERED SIDE)*





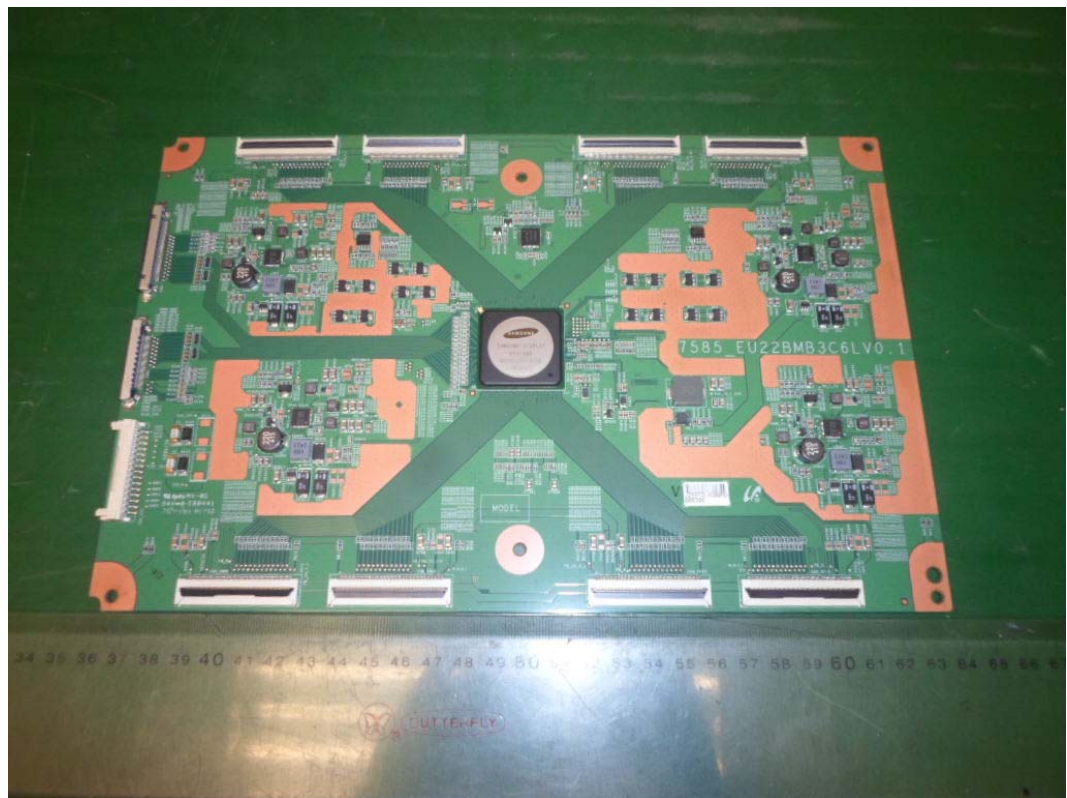
*FIGURE 17*  
*LED LCD TV (M/N: 75H9)*  
*KEY BOARD (COMPONENT SIDE)*



*FIGURE 18*  
*LED LCD TV (M/N: 75H9)*  
*KEY BOARD (SOLDERED SIDE)*



*FIGURE 19*  
*LED LCD TV (M/N: 75H9)*  
*LCD PANEL CONTROL BOARD #1 (COMPONENT SIDE)*



*FIGURE 20*  
*LED LCD TV (M/N: 75H9)*  
*LCD PANEL CONTROL BOARD #1 (SOLDERED SIDE)*

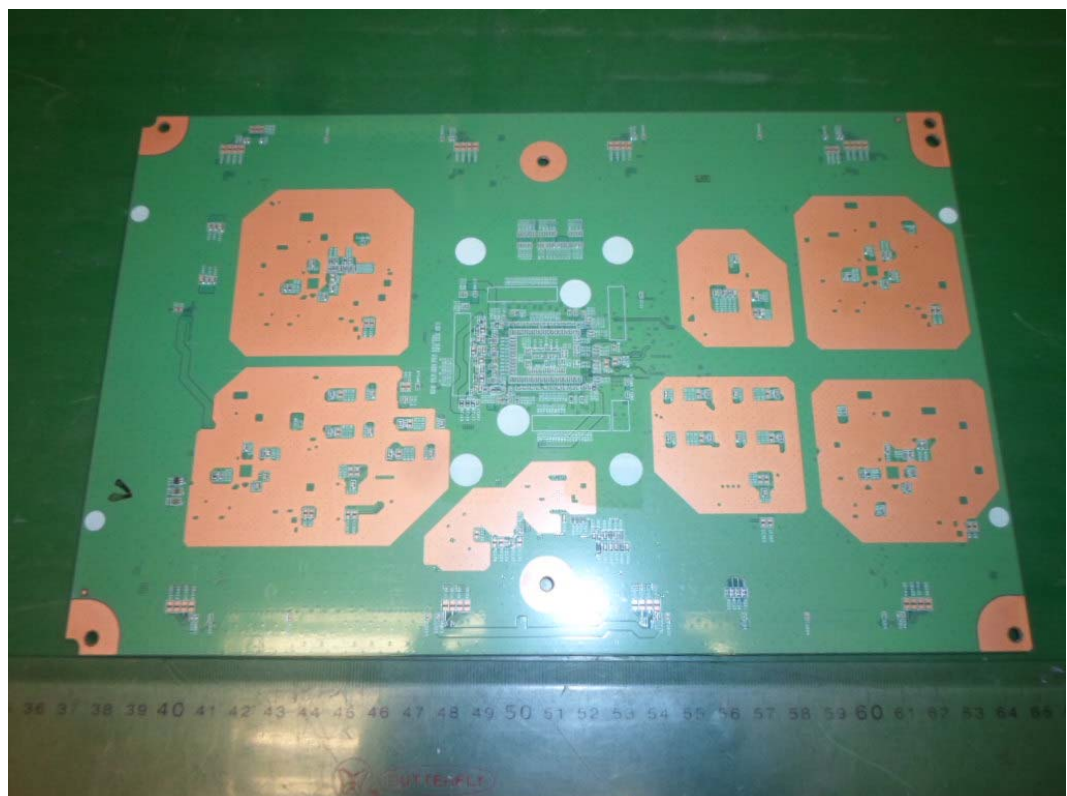




FIGURE 21  
LED LCD TV (M/N: 75H9)  
CHIP ON LCD PANEL CONTROL BOARD #1

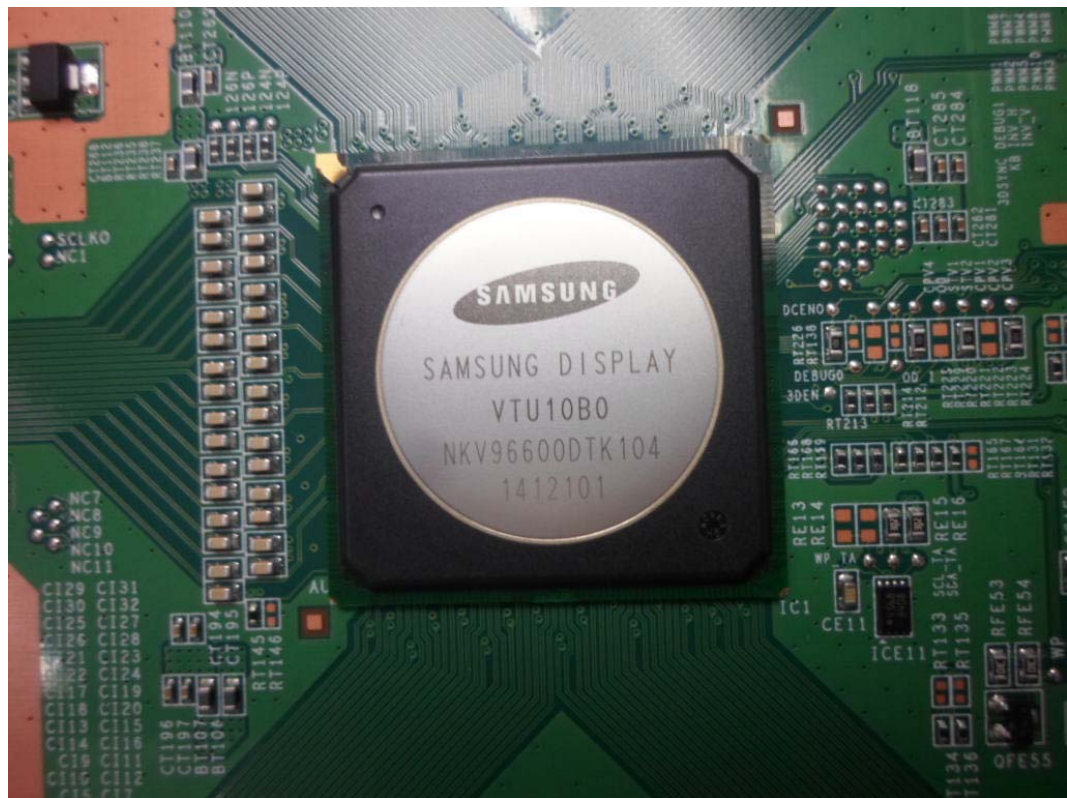


FIGURE 22  
LED LCD TV (M/N: 75H9)  
LCD PANEL CONTROL BOARD #2 (COMPONENT SIDE)

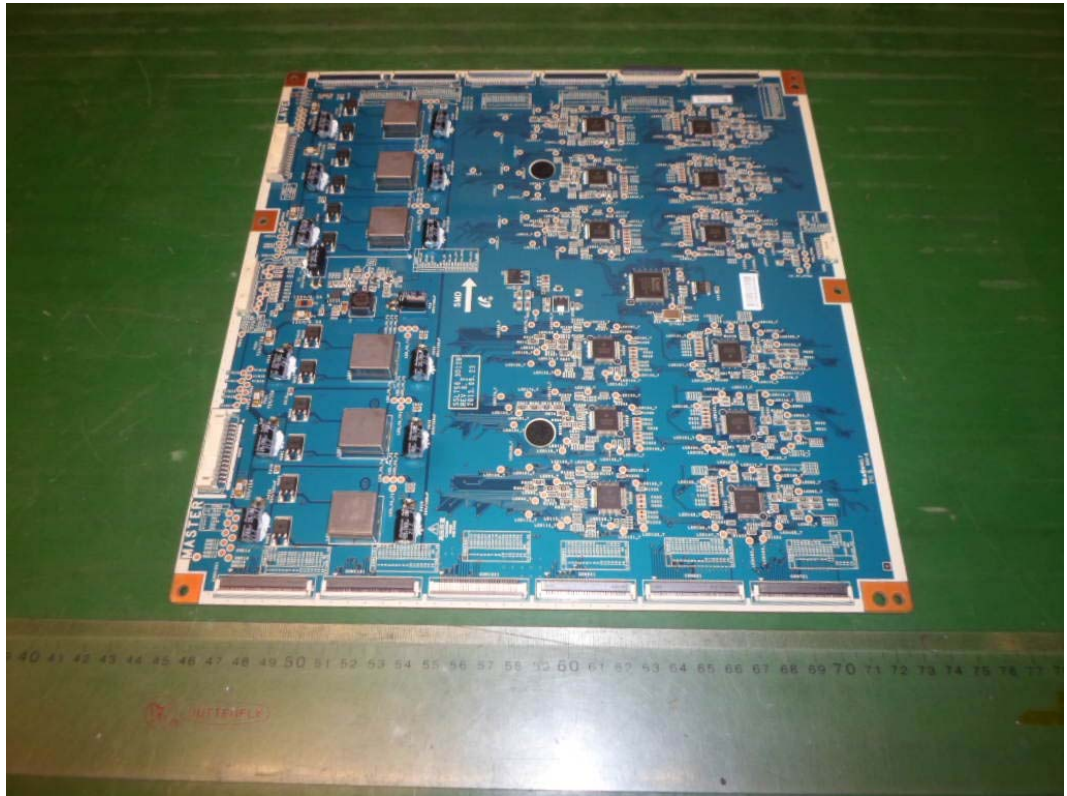
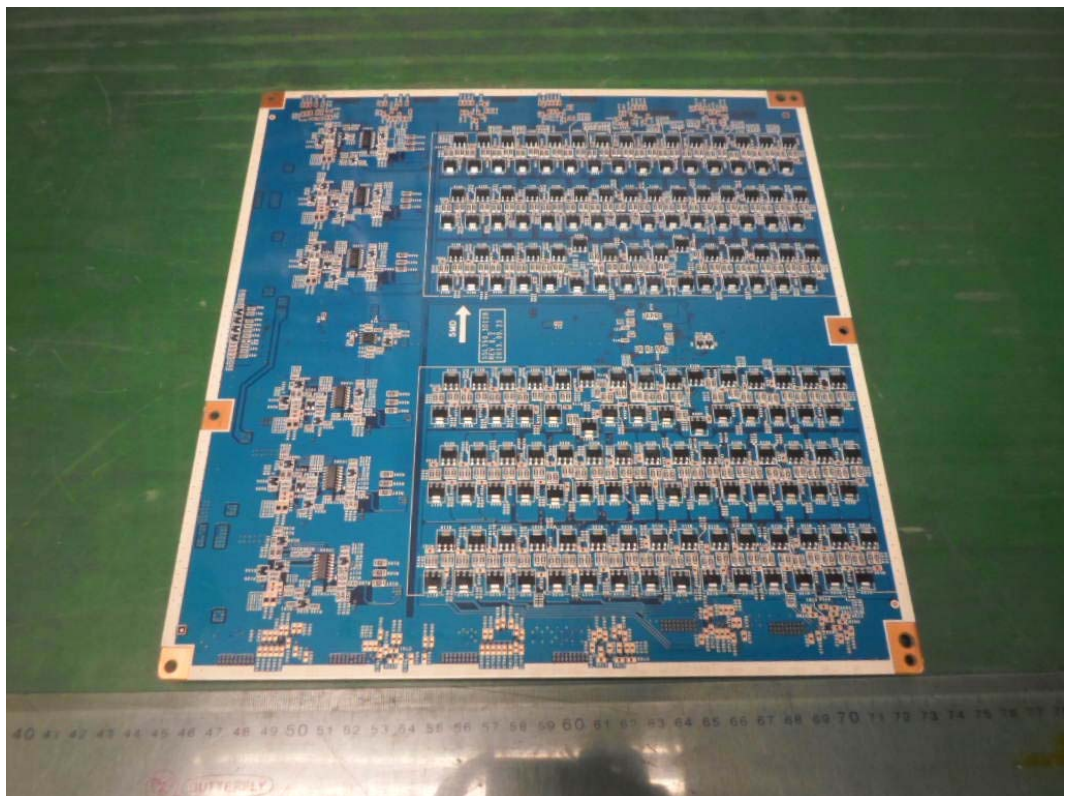
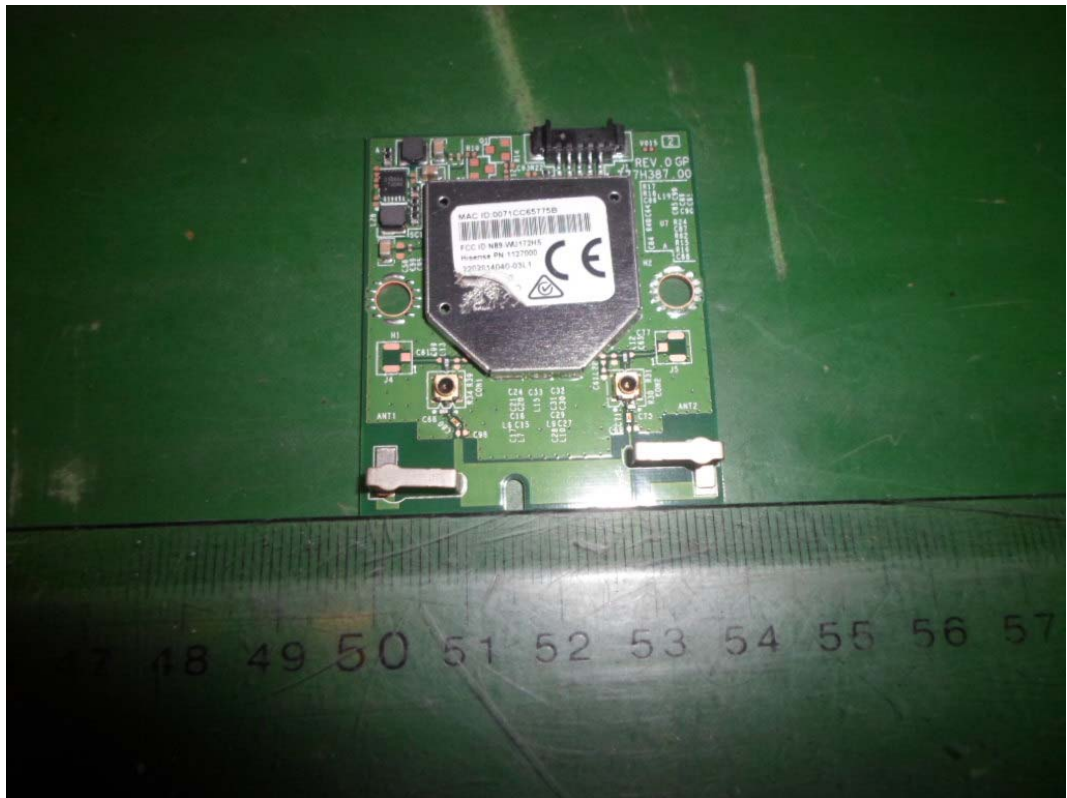


FIGURE 23  
LED LCD TV (M/N: 75H9)  
LCD PANEL CONTROL BOARD #2 (SOLDERED SIDE)





*FIGURE 24*  
*LED LCD TV (M/N: 75H9)*  
*RF BOARD (COMPONENT SIDE)*



*FIGURE 25*  
*LED LCD TV (M/N: 75H9)*  
*RF BOARD (SOLDERED SIDE)*

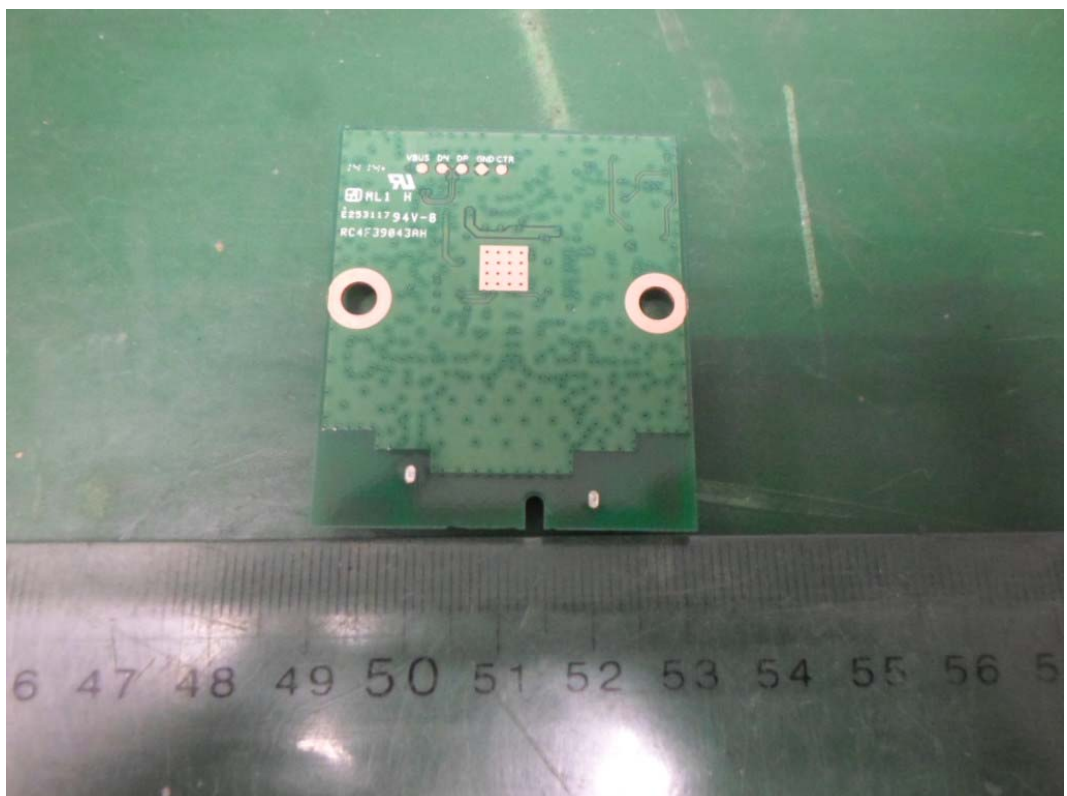


FIGURE 26  
LED LCD TV (M/N: 75H9)  
LABEL ON RF BOARD



FIGURE 27  
LED LCD TV (M/N: 75H9)  
RF BOARD (SHIELDED SHELL REMOVED)

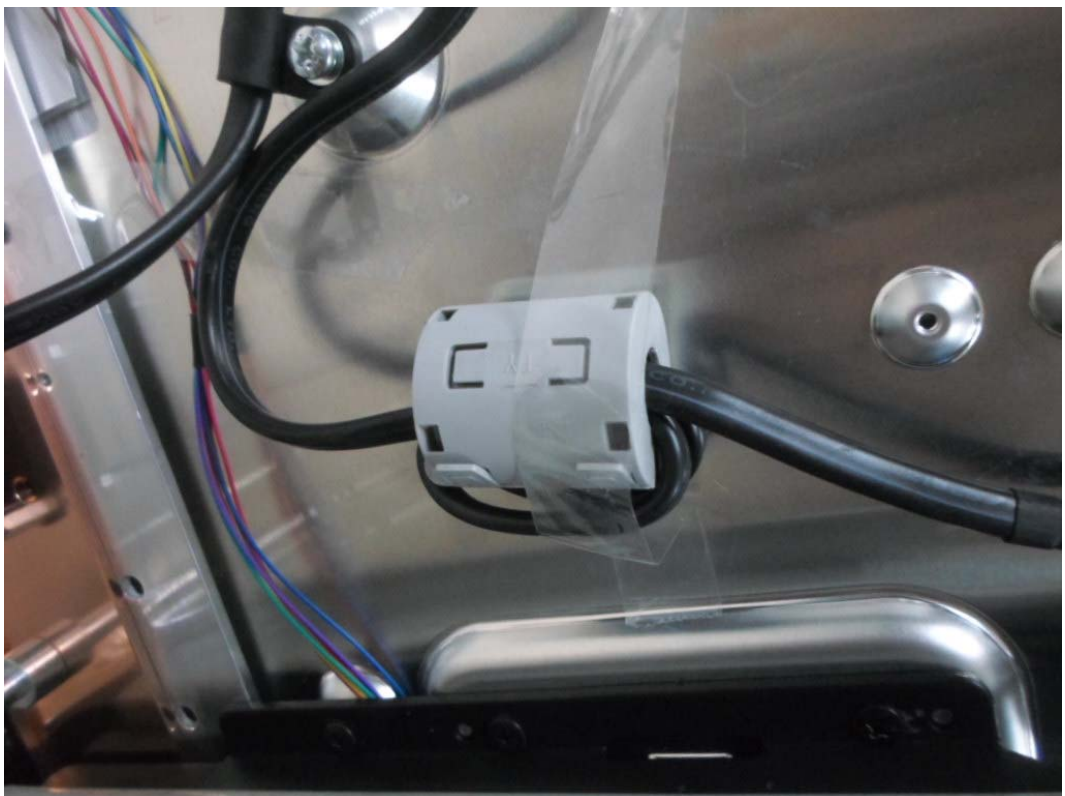




*FIGURE 28*  
*LED LCD TV (M/N: 75H9)*  
*DEBUG #1*



*FIGURE 29*  
*LED LCD TV (M/N: 75H9)*  
*DEBUG #2*



*FIGURE 30*  
*LED LCD TV (M/N: 75H9)*  
*DEBUG #3*

