

FIGURE 1
LED LCD TV (M/N: 65K680GW)
COVER REMOVED



FIGURE 2
LED LCD TV (M/N: 65K680GW)
LCD PANEL LABEL

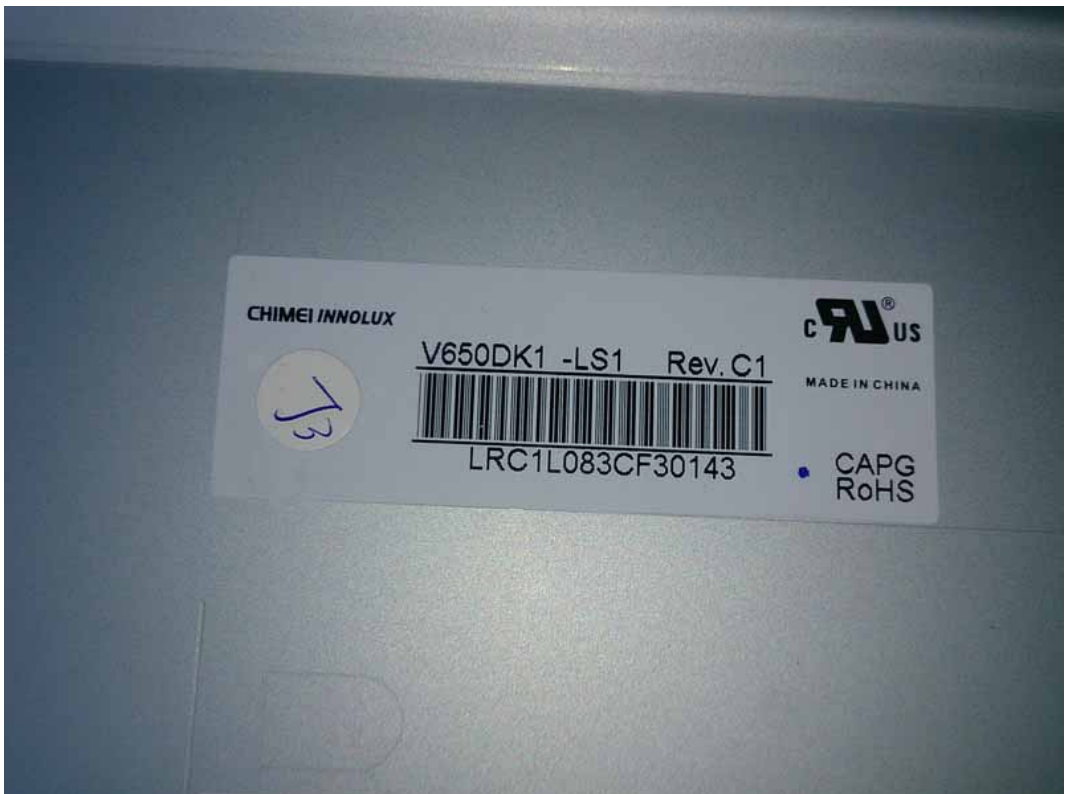


FIGURE 3
LED LCD TV (M/N: 65K680GW)
POWER BOARD (COMPONENT SIDE)



FIGURE 4
LED LCD TV (M/N: 65K680GW)
POWER BOARD (SOLDERED SIDE)

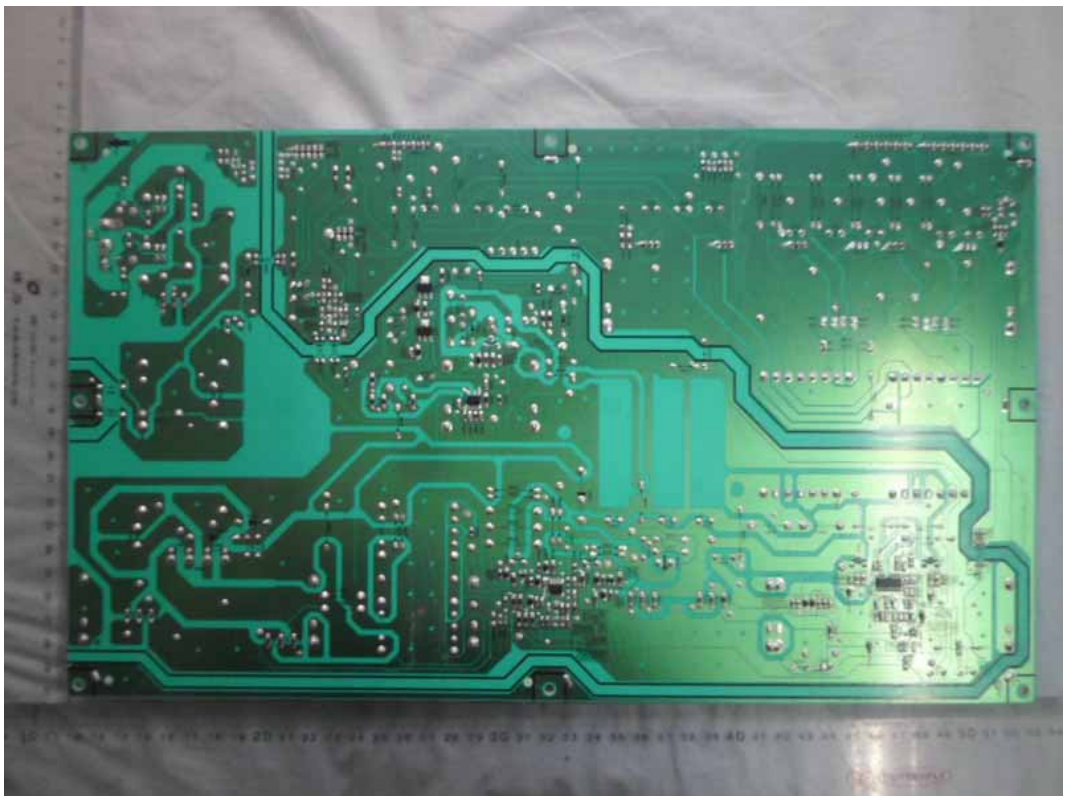


FIGURE 5
LED LCD TV (M/N: 65K680GW)
MAIN BOARD (COMPONENT SIDE)



FIGURE 6
LED LCD TV (M/N: 65K680GW)
MAIN BOARD (SOLDERED SIDE)



FIGURE 7
LED LCD TV (M/N: 65K680GW)
CHIP #1 & CRYSTAL #1 ON MAIN BOARD

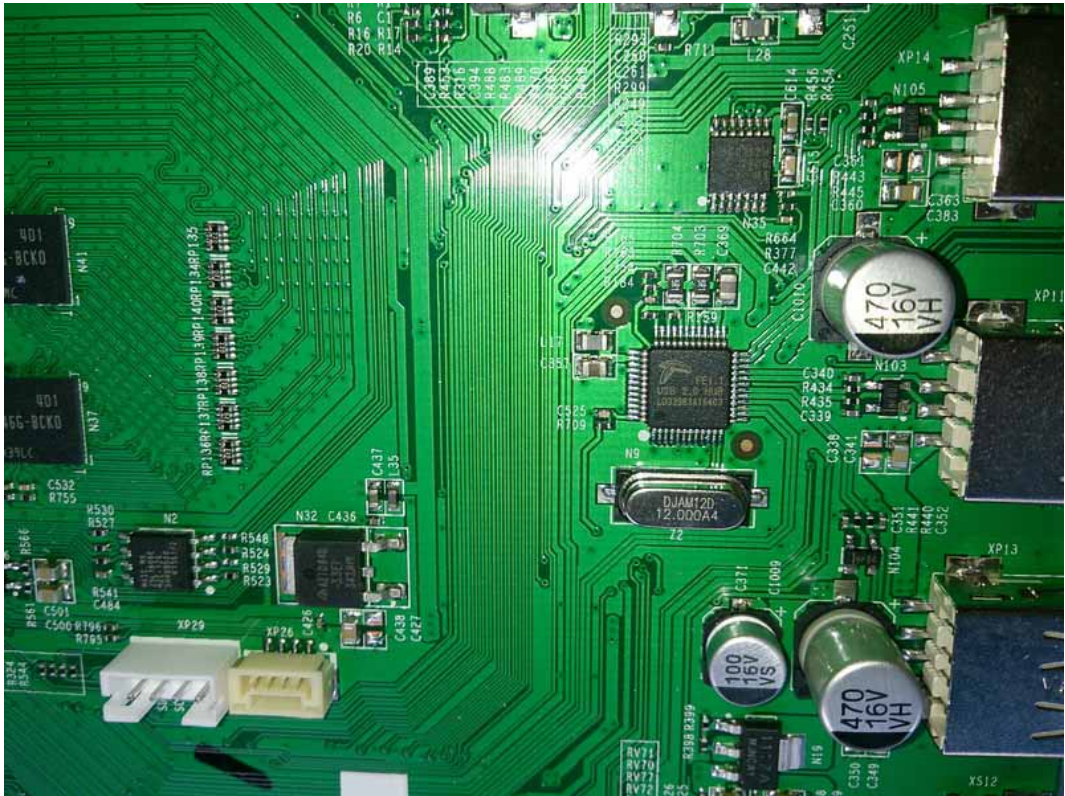


FIGURE 8
LED LCD TV (M/N: 65K680GW)
CHIP #2 & CRYSTAL #2 ON MAIN BOARD



FIGURE 9
LED LCD TV (M/N: 65K680GW)
CHIP #3 & CRYSTAL #3 ON MAIN BOARD

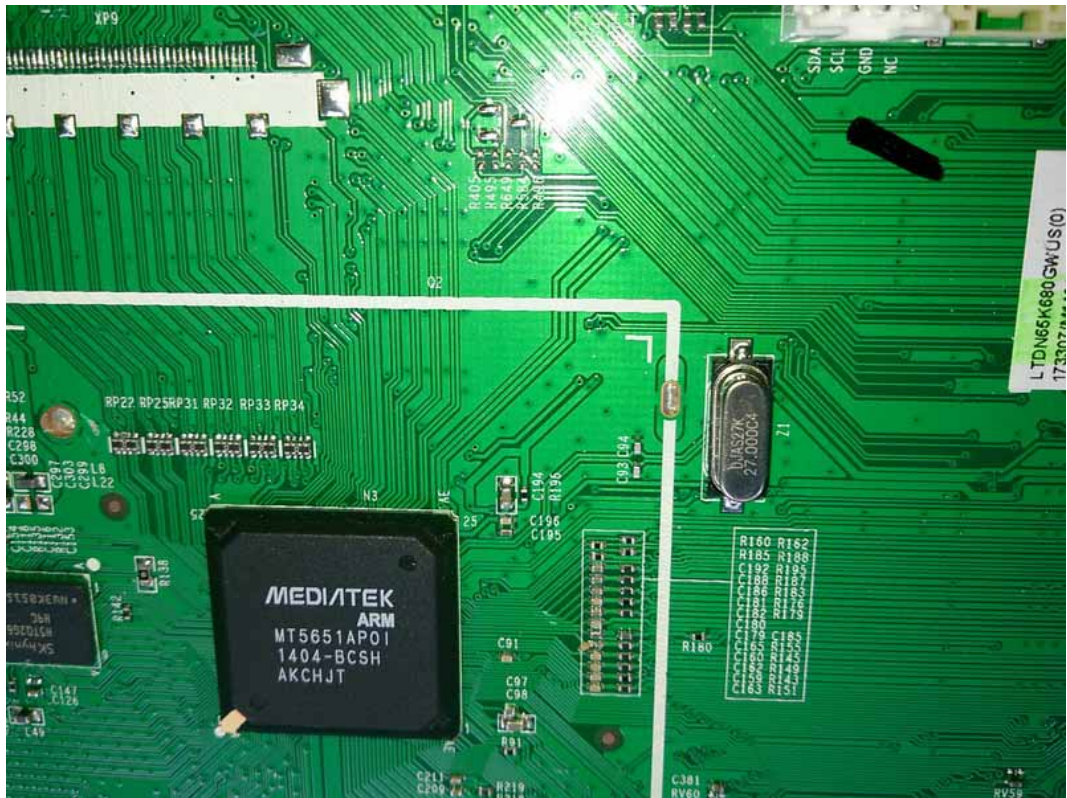


FIGURE 10
LED LCD TV (M/N: 65K680GW)
TUNER ON MAIN BOARD



FIGURE 11
LED LCD TV (M/N: 65K680GW)
KEY BOARD (COMPONENT SIDE)



FIGURE 12
LED LCD TV (M/N: 65K680GW)
KEY BOARD (SOLDERED SIDE)



FIGURE 13
LED LCD TV (M/N: 65K680GW)
BOARD (COMPONENT SIDE)



FIGURE 14
LED LCD TV (M/N: 65K680GW)
BOARD (SOLDERED SIDE)



FIGURE 15
LED LCD TV (M/N: 65K680GW)
CHIP #1 & CRYSTAL #1 ON BOARD

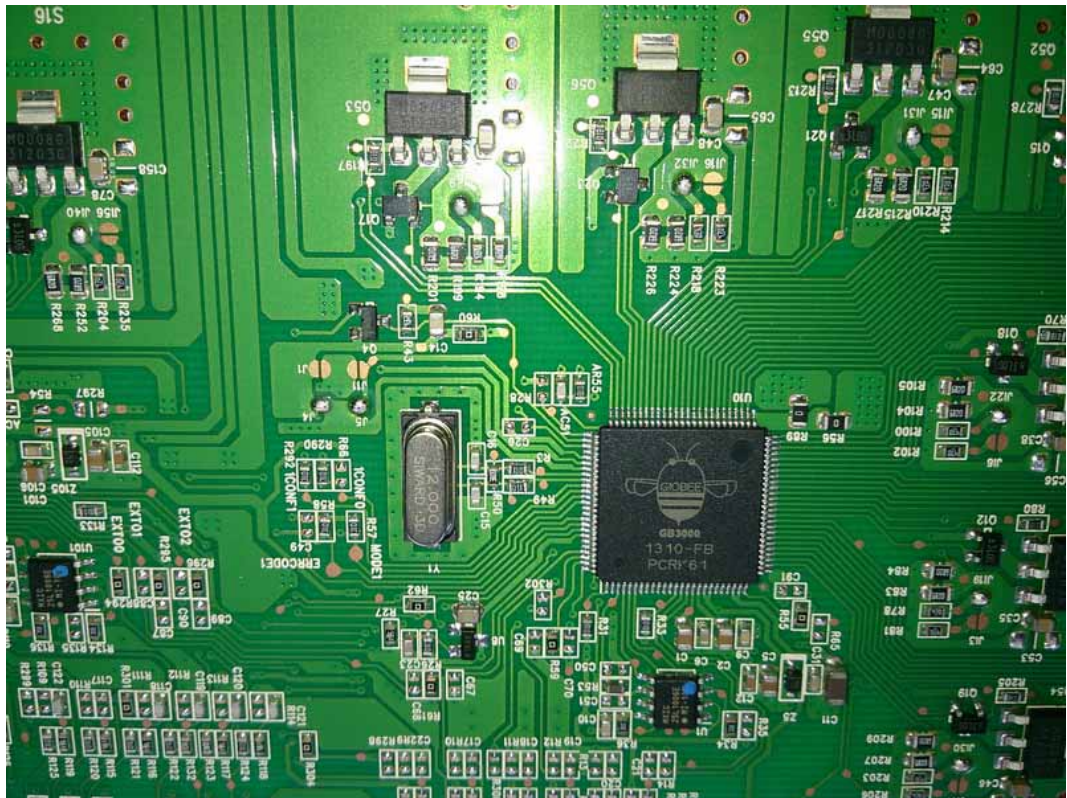


FIGURE 16
LED LCD TV (M/N: 65K680GW)
CHIP #2 & CRYSTAL #2 ON BOARD

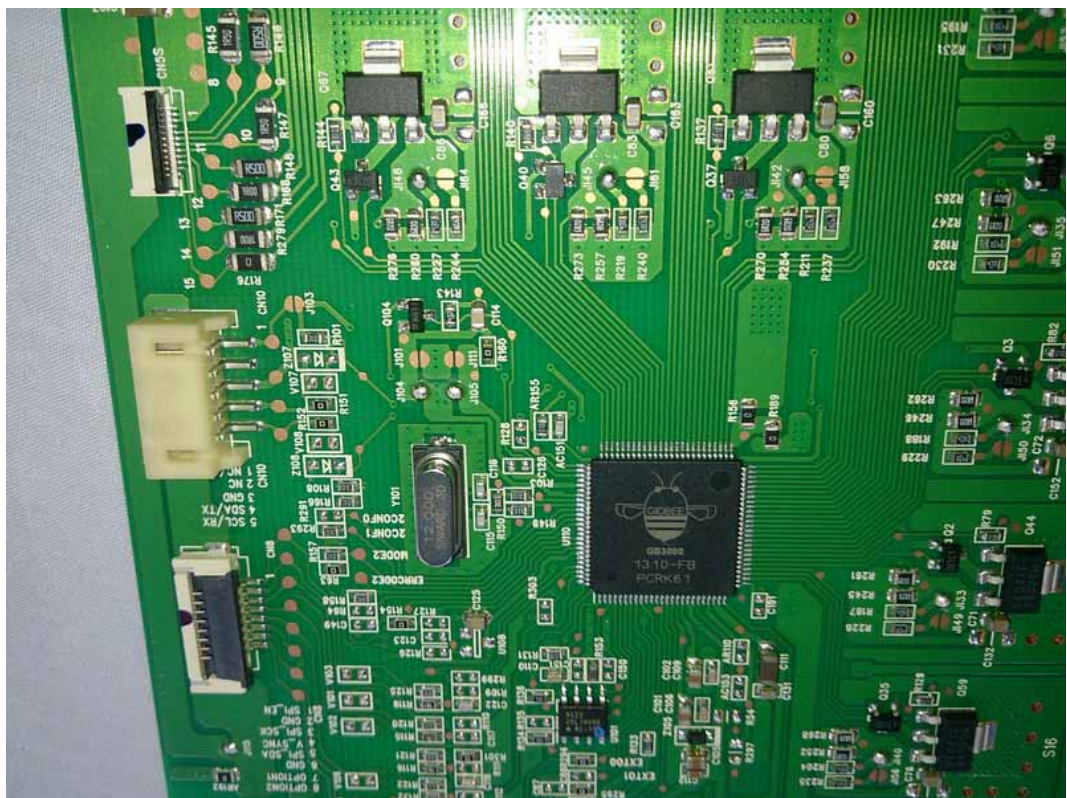


FIGURE 17
LED LCD TV (M/N: 65K680GW)
RF BOARD (COMPONENT SIDE)



FIGURE 18
LED LCD TV (M/N: 65K680GW)
RF BOARD (SOLDERED SIDE)

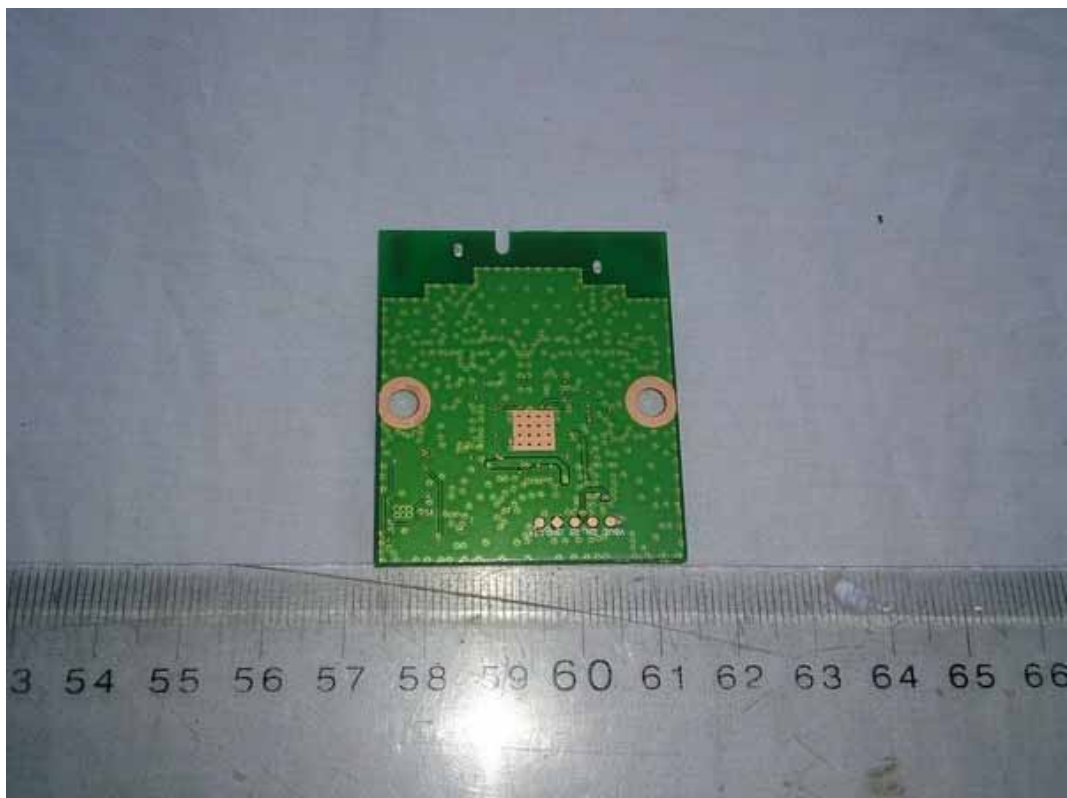


FIGURE 19
LED LCD TV (M/N: 65K680GW)
LABEL ON RF BOARD



FIGURE 20
LED LCD TV (M/N: 65K680GW)
LCD PANEL CONTROL BOARD (COMPONENT SIDE)



FIGURE 21
LED LCD TV (M/N: 65K680GW)
LCD PANEL CONTROL BOARD (SOLDERED SIDE)



FIGURE 22
LED LCD TV (M/N: 65K680GW)
CHIP ON LCD PANEL CONTROL BOARD



FIGURE 23
LED LCD TV (M/N: 65K680GW)
DEBUG #1



FIGURE 24
LED LCD TV (M/N: 65K680GW)
DEBUG #2

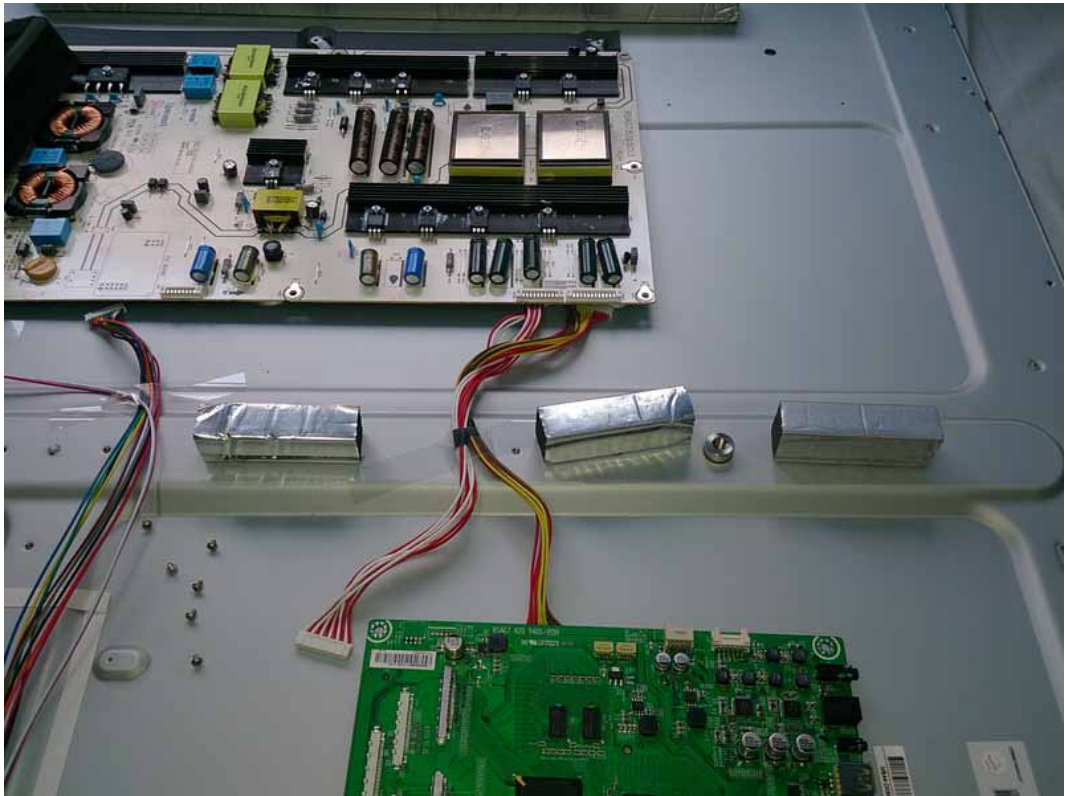


FIGURE 25
LED LCD TV (M/N: 65K680GW)
DEBUG #3

