

FIGURE 1
LED LCD TV (M/N: 50H5G)
COVER REMOVED



FIGURE 2
LED LCD TV (M/N: 50H5G)
LCD PANEL LABEL



FIGURE 3
LED LCD TV (M/N: 50H5G)
POWER BOARD (COMPONENT SIDE)



FIGURE 4
LED LCD TV (M/N: 50H5G)
POWER BOARD (SOLDERED SIDE)

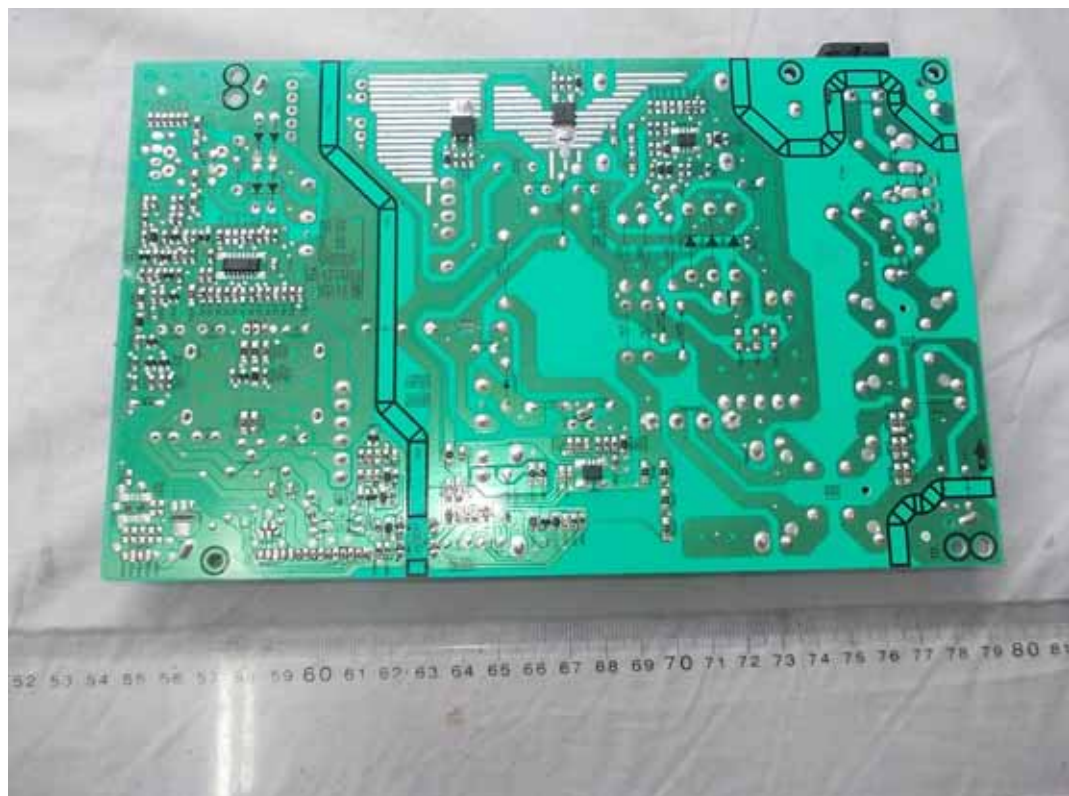


FIGURE 5
LED LCD TV (M/N: 50H5G)
MAIN BOARD (COMPONENT SIDE)



FIGURE 6
LED LCD TV (M/N: 50H5G)
MAIN BOARD (SOLDERED SIDE)

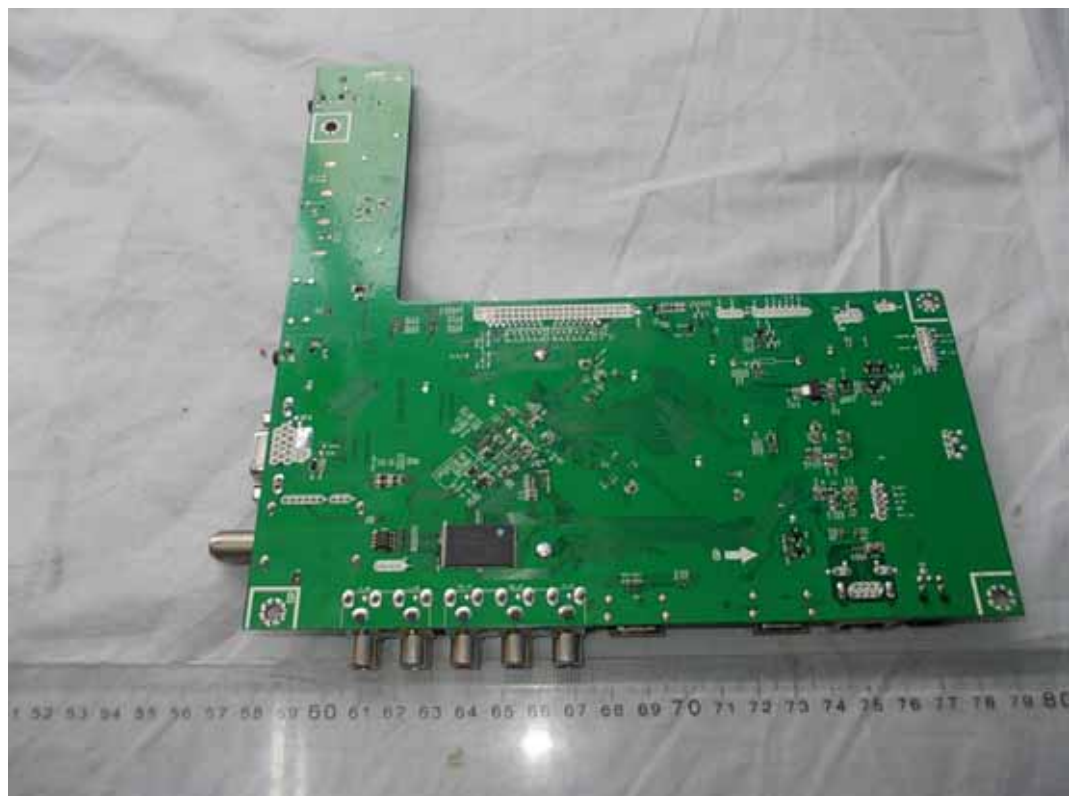


FIGURE 9
LED LCD TV (M/N: 50H5G)
CRYSTAL #2 ON MAIN BOARD



FIGURE 10
LED LCD TV (M/N: 50H5G)
TUNER ON MAIN BOARD



FIGURE 11
LED LCD TV (M/N: 50H5G)
KEY BOARD (COMPONENT SIDE)



FIGURE 12
LED LCD TV (M/N: 50H5G)
KEY BOARD (SOLDERED SIDE)

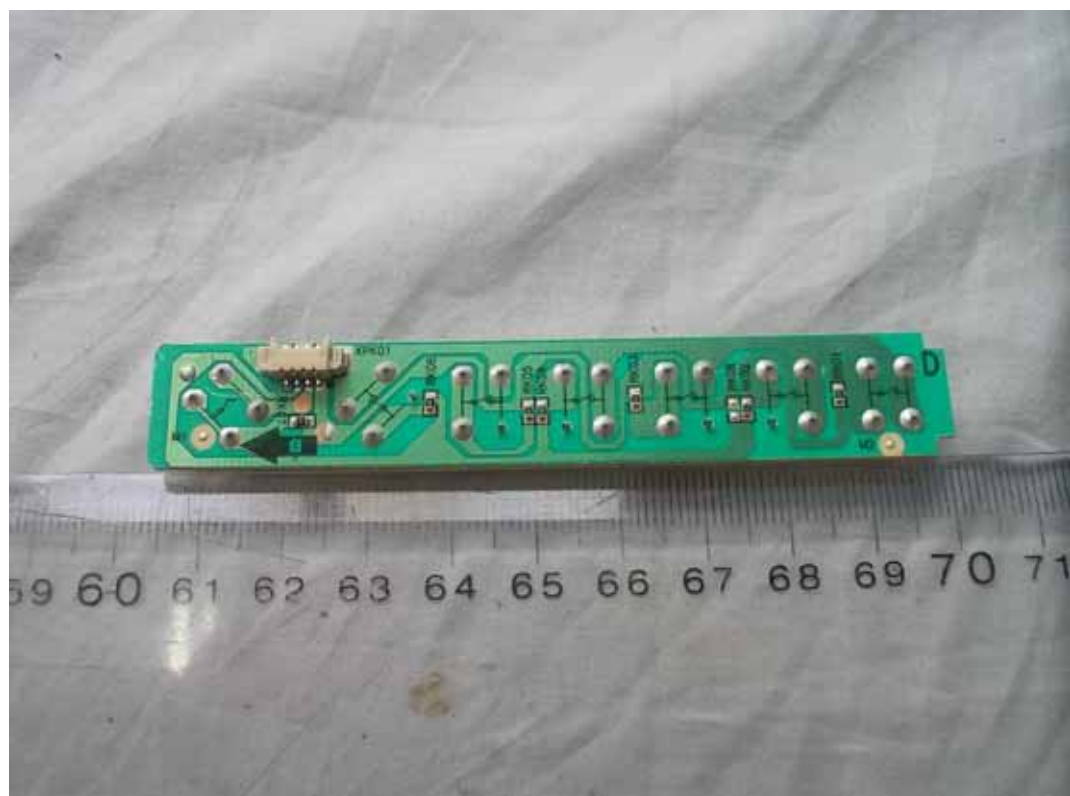


FIGURE 13
LED LCD TV (M/N: 50H5G)
RF BOARD (COMPONENT SIDE)

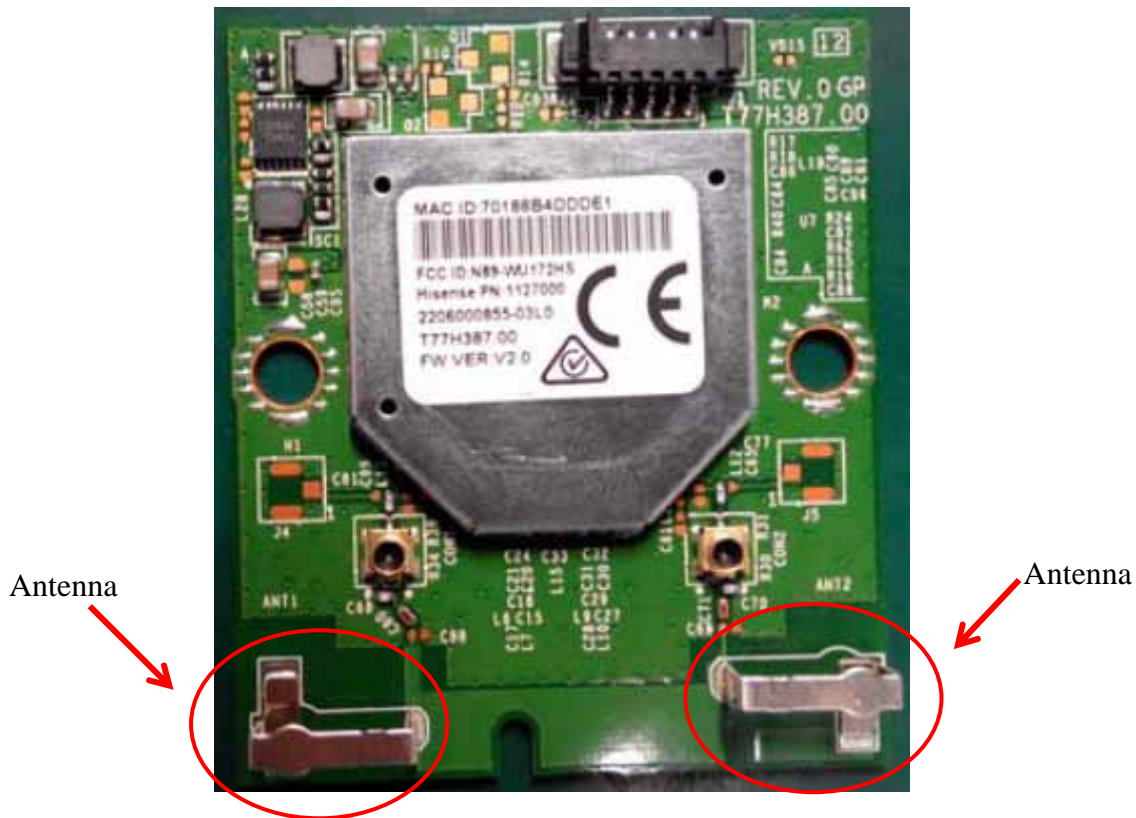


FIGURE 14
LED LCD TV (M/N: 50H5G)
RF BOARD (SOLDERED SIDE)



FIGURE 15
LED LCD TV (M/N: 50H5G)
LCD PANEL CONTROL BOARD (COMPONENT SIDE)



FIGURE 16
LED LCD TV (M/N: 50H5G)
LCD PANEL CONTROL BOARD (SOLDERED SIDE)

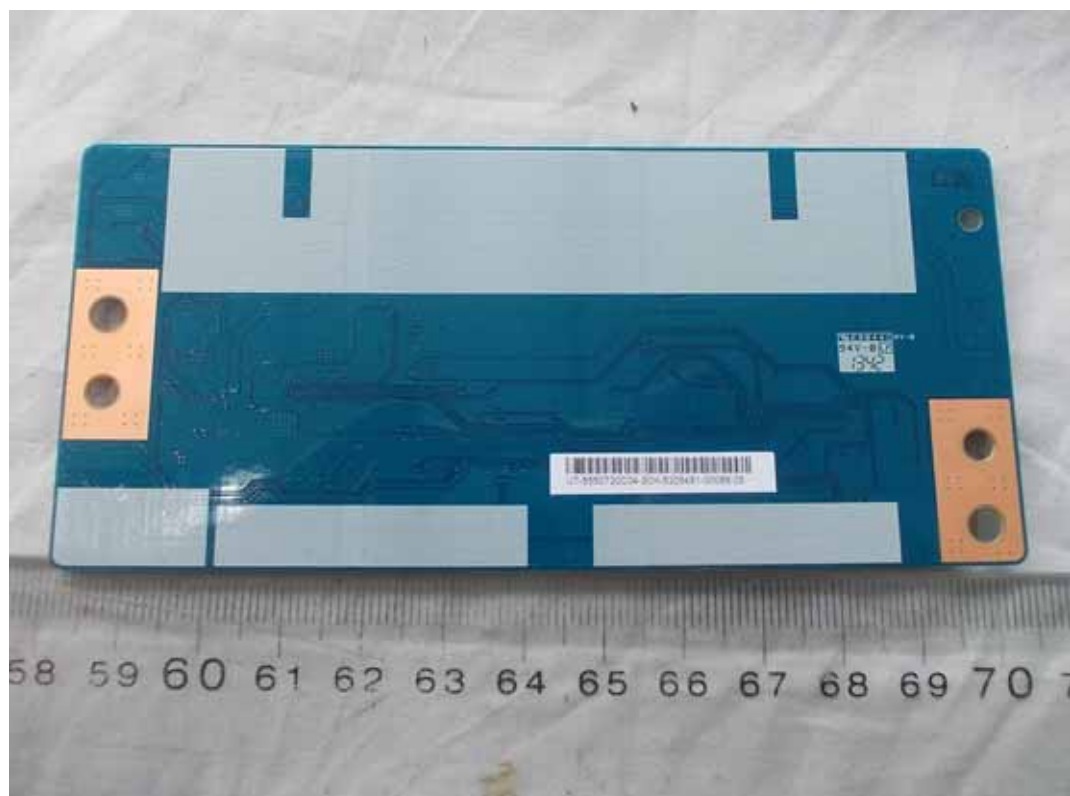


FIGURE 17
LED LCD TV(M/N: 50H5G)
CHIP& CRYSTAL ON LCD PANEL CONTROL BOARD



FIGURE 18
LED LCD TV(M/N: 50H5G)
DEBUG #1

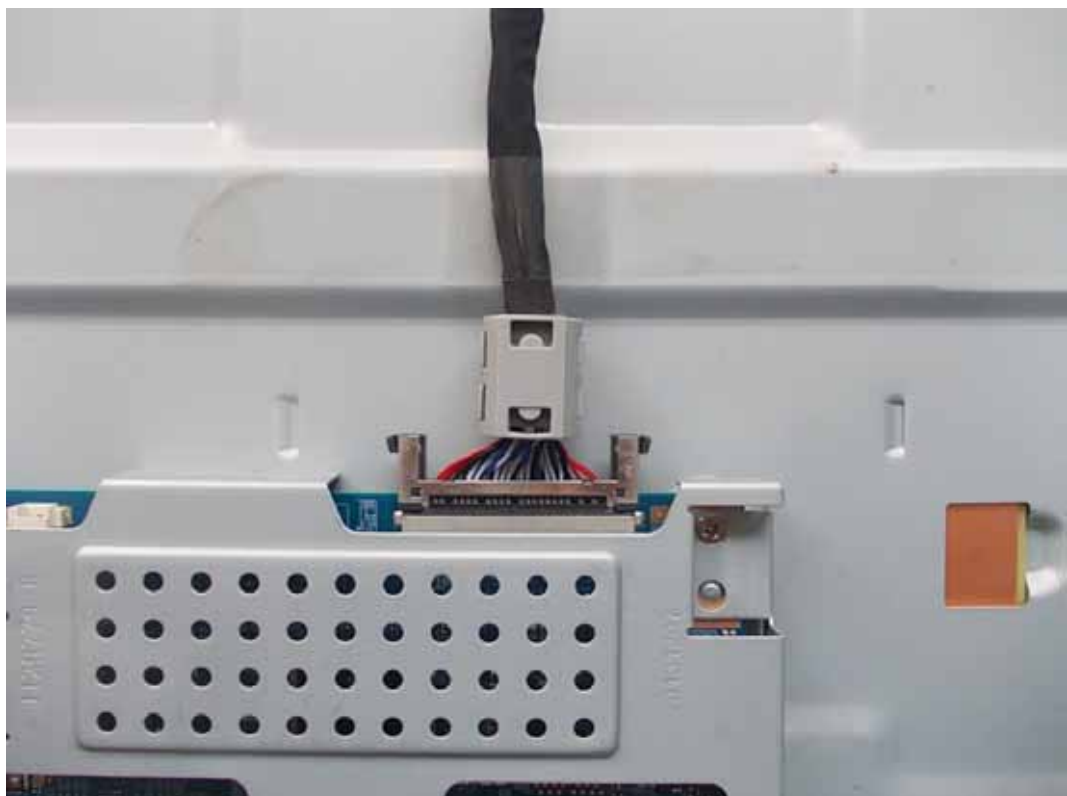


FIGURE 19
LED LCD TV (M/N: 50H5G)
DEBUG #2

