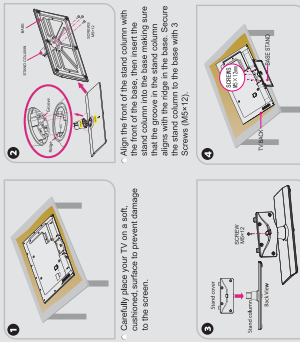


1 ACCESSORIES LIST

- User Manual
- Quick Setup Guide
- Screw (M5 × 12) × 6
- Batteries: AAA × 2

2 INSTALLING THE STAND

Follow the illustrations below to complete the installation steps.



Align the stand cover with the stand. Make sure that the bottom of the stand cover is flush with the top of the stand column.

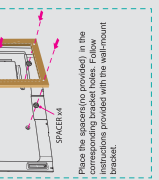
Align the stand cover with the stand. Make sure that the bottom of the stand cover is flush with the top of the stand column.

NOTE

Product image is only for reference, actual product may vary in appearance. Carefully check your TV features and confirm the stand to be attached to the TV or scratching to the screen.

3 INSTALLING A WALL-MOUNT BRACKET

If you want to attach the TV to a wall-mount bracket (no provided), you should first remove the stand to prevent scratching.



WELL-MOUNT BRACKET

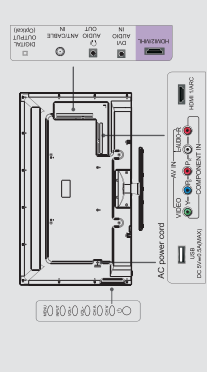
Well-Mount screw size (mm): 400 × 400

Well-Mount hole pattern VESA (mm): M8

Follow instructions provided with the Well-Mount bracket. The Well-Mount bracket is not responsible for any damage or injuries that occur due to manufacturing or professional installer or service technician for assistance. The manufacturer is not responsible for any damage or injuries that occur due to manufacturing or professional installer or service technician for assistance.

- This selected screws are 9.5-11.5mm in length when measured from the attaching surface of the TV's rear cover. The diameter and length of the screws differ depending on the Well-Mount bracket model.

4 BUTTONS AND CONNECTORS



Item	Description
MENU	Display the on-screen menu to setup your TV's features.
INPUT	Select the different input signal sources.
VCR-4	Adjust the volume.
CH/TV	Select the channel.
(Power button)	Turn on the TV or put the TV in standby mode. When in standby mode, pressing the power button will turn the TV on. Unplug the power cord to disconnect power.
ANTICABLE	Connect an antenna or cable TV to this jack.
HDMI	HDMI (High-Definition Multimedia Interface) provides an uncompressed, all digital audio/video interface between the TV and other HDMI devices. All HDMI inputs can support DVI video by using a DVI-to-HDMI Cable. The DVI audio should be connected to DV/AUDIO IN.
COMPONENT IN	Connect the composite (YPbPr) video and audio output jacks on external video devices.
AV IN	Connect to a PC or other devices with a 3.5mm TRS jack.
DVI AUDIO IN	Connect to a PC or other devices with a 3.5mm TRS jack.
OPTICAL OUT	Connect headphone or analog sound system using 3.5mm TRS jack. (19P-stereo mini to L/R phone-not provided).
DIGITAL OUTPUT	Connect an audio amplifier to this jack.
USB	Port for Digital Media Player and for software update.

5 REMOTE CONTROL

NOTE

The full battery pack is available for the remote.

- Select TV / AV / USB source
- Adjust closed caption mode
- User manual
- MENU button
- Move Up/Down with arrow keys
- Close the menu

Confirm selections

Direct channel selection

Display button

Media content control

Sleep timer

Go to the previous channel

Set the sleep timer

6 TV CONNECTORS

CHANGE THE BATTERIES

- Slide the back cover to open the battery compartment of the remote control.
- Insert two AAA-size batteries. Make sure to match the (+) and (-) ends of the batteries with the (+) and (-) ends indicated in the battery compartment.
- Close the battery compartment cover.

Insert the batteries

Remove the batteries

7 SPECIFICATIONS

Model Name	50K20D
Dimension	Without Stand: 44.4×28.3×3.1 inches (1129×697×79.3 mm) With Stand: 44.4×28.3×5.1 inches (1129×722×129.3 mm)
Weight	Without Stand: 33.1 lbs (15 kg) With Stand: 39.7 lbs (18 kg)
Active Screen Size (Diagonal)	50 inches
Screen Resolution	1920 × 1080
Audio power	8 W × 3 (W)
Power supply	NTSC
Receiving systems	Digital
Receiving channels	ALF-2×3 LUMF: 14-60 CATV: 1-125 Digital Terrestrial Broadcast (8/68): 2-69 Digital cable (DVB-C/DMB-T): 1-135
Tuner type	Temperature: 41°F ~ 95°F (5°C ~ 35°C) Humidity: 20% ~ 80% RH
Environmental conditions	Atmospheric pressure: 98 kPa ~ 106 kPa Altitude: 0 ~ 10000 ft (0 ~ 3048 m)
Composited Input	RGB: 60 Hz 640×480, 800×600, 1024×768 Y/Pb/Pr: 60 Hz 680 L, 480 P, 720 P, 1080 I, 1080P
HDMI Input	

8 TURNING THE TV ON FOR THE FIRST TIME

Picture Mode

Press **[Picture]** to select your TV source. Antenna or Cable. Press **[Picture]** to select the picture mode you want. Press **[Picture]** to exit the picture mode.

Time Setting

Press **[Time]** to select the local time zone according to your location. Press **[Time]** to select the number you want. Press **[Time]** to confirm.

Picture Mode

Press **[Picture]** to select your TV source. Antenna or Cable. Press **[Picture]** to select the picture mode you want. Press **[Picture]** to exit the picture mode.

Picture Mode

Press **[Picture]** to select your TV source. Antenna or Cable. Press **[Picture]** to select the picture mode you want. Press **[Picture]** to exit the picture mode.

If you are using a cable or satellite box, you should select the cable option. If you are using a cable or satellite box, you should select the cable option. If you are using a cable or satellite box, you should select the cable option.

9 HELP TOPICS

When there is something wrong with your TV, you can try turning off the TV and restarting it. You can also refer to the following chart for problem and solution topics.

SYMPTOMS	POSSIBLE SOLUTIONS
No sound or picture	• Confirm power cord is plugged into the AC outlet and the AC outlet is getting electricity. • Attempt to power on unit using the power button on both the TV and the remote. • Check the volume settings. • Check the input source.
Picture is normal, but no sound	• Check the correct output connection on the external source and for the correct input connection on the TV. • Make sure you have made the correct selection for the input mode for the incoming signal.
I have connected an external source to my TV and get no picture and/or sound.	• If black and white picture first, unplug TV from AC outlet and replug after 60 seconds. • Check Color Setting if picture is black and white.
Sound and picture distorted or appear wavy.	• An electrical appliance may be affecting TV set. Turn off any appliances, if interference goes away, move appliance further away from TV. • Check the correct output connection on the external source and for the correct input connection on the TV. • Adjust the direction of your antenna or that of the line to the channel.
Sound and picture are blurry or cut out momentarily.	• After switching to Cable, please auto program the channels. The TV will "remember" all the channels then the TV will allow you to surf the channels with [CH/V] buttons. • Confirm that TV still has power and is operational. • Check the batteries are correctly installed. • Clean the front of the remote control (LED window). • If using a universal remote, be sure to select the TV mode on the remote. • Remove and reinsert the batteries correctly to reset the remote or install new batteries. • Press the Power button on the TV. With an universal remote if you have reset or changed the batteries this time, the camera should set on camera phone, you can aim the front of the remote at camera lenses (at this time, the camera should not play mode). Observe the camera screen while you aim the remote at the camera lens. If the camera screen shows "No light" or "No light" observed, the remote control is not working. You need to repair or replace the remote control.
[GM/V] don't work when I set the Channel to Cable? They work with the Air Setting?	
Remote control does not work.	