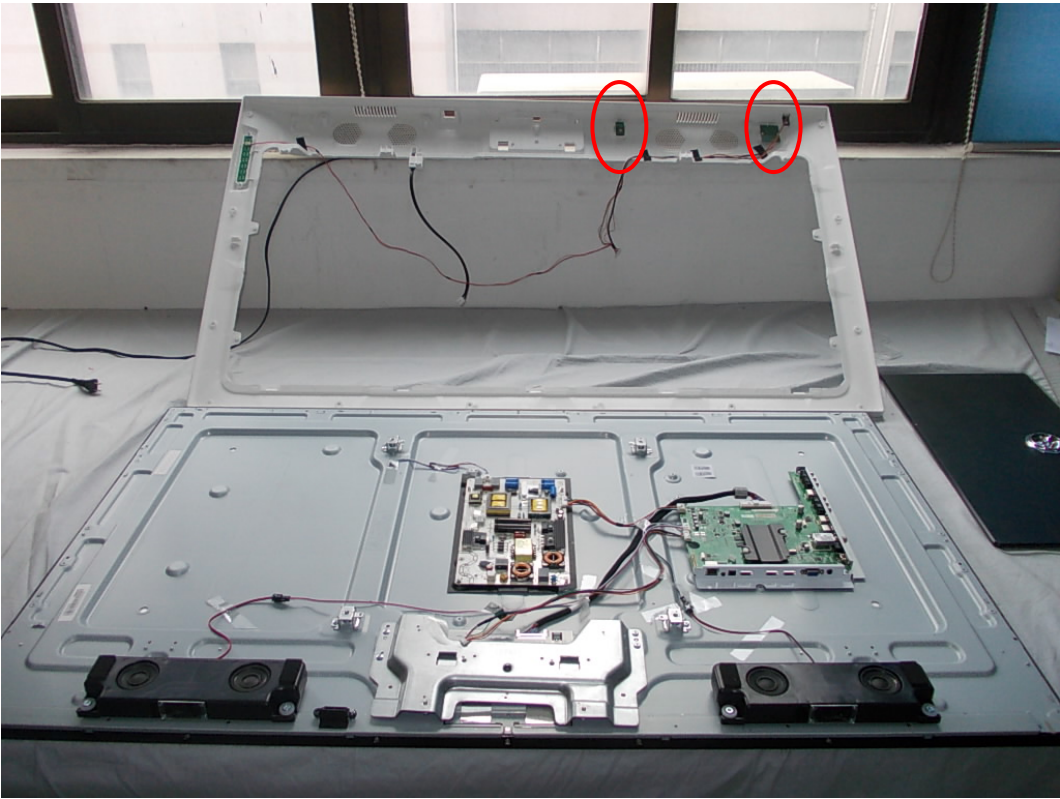


*FIGURE 1
LED LCD TV (M/N: 55H7G)
COVER REMOVED #1*



*FIGURE 2
LED LCD TV (M/N: 55H7G)
COVER REMOVED #2*

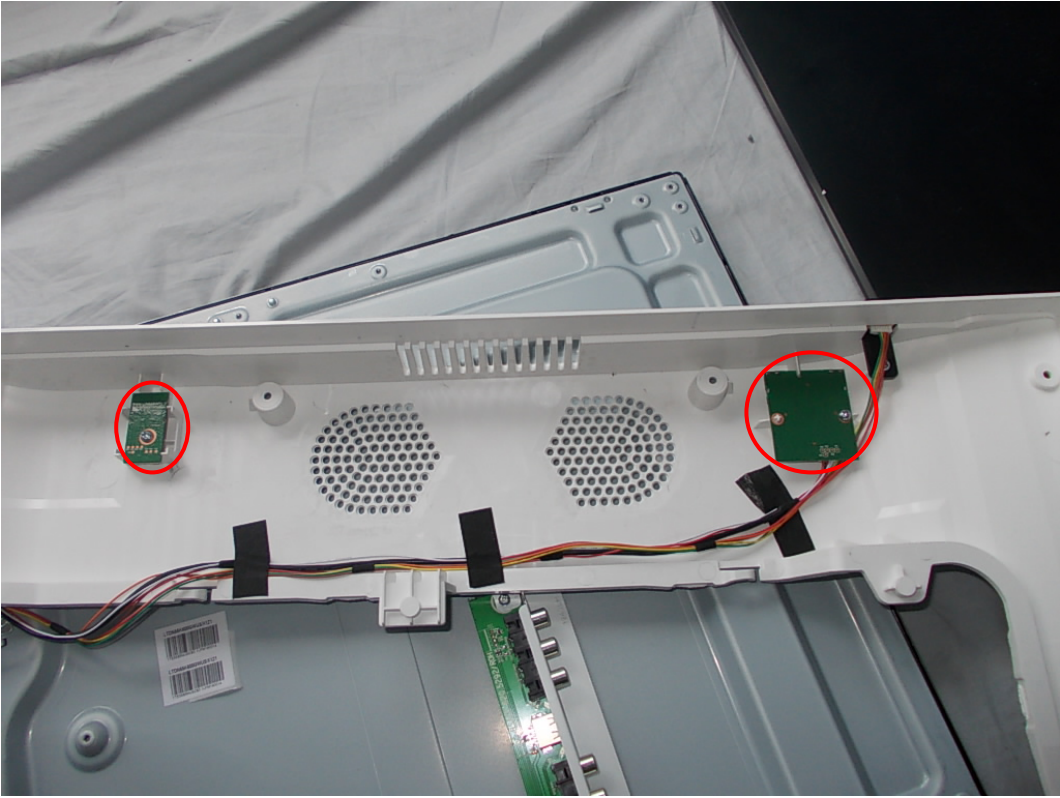


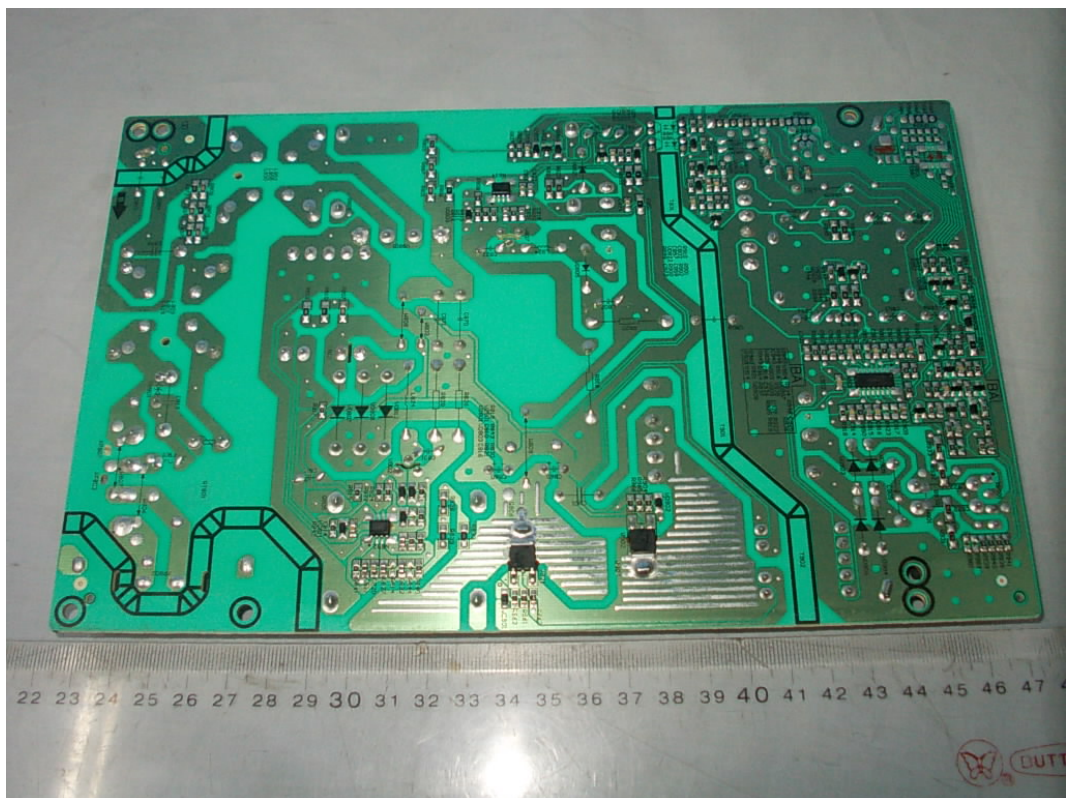
FIGURE 3
LED LCD TV (M/N: 55H7G)
LCD PANEL LABEL



FIGURE 4
LED LCD TV (M/N: 55H7G)
POWER BOARD (COMPONENT SIDE)



FIGURE 5
LED LCD TV (M/N: 55H7G)
POWER BOARD (SOLDERED SIDE)



*FIGURE 6
LED LCD TV (M/N: 55H7G)
MAIN BOARD (COMPONENT SIDE)*



*FIGURE 7
LED LCD TV (M/N: 55H7G)
MAIN BOARD (SOLDERED SIDE)*



FIGURE 8
LED LCD TV(M/N: 55H7G)
CHIP #1 & CRYSTAL #1 ON MAIN BOARD

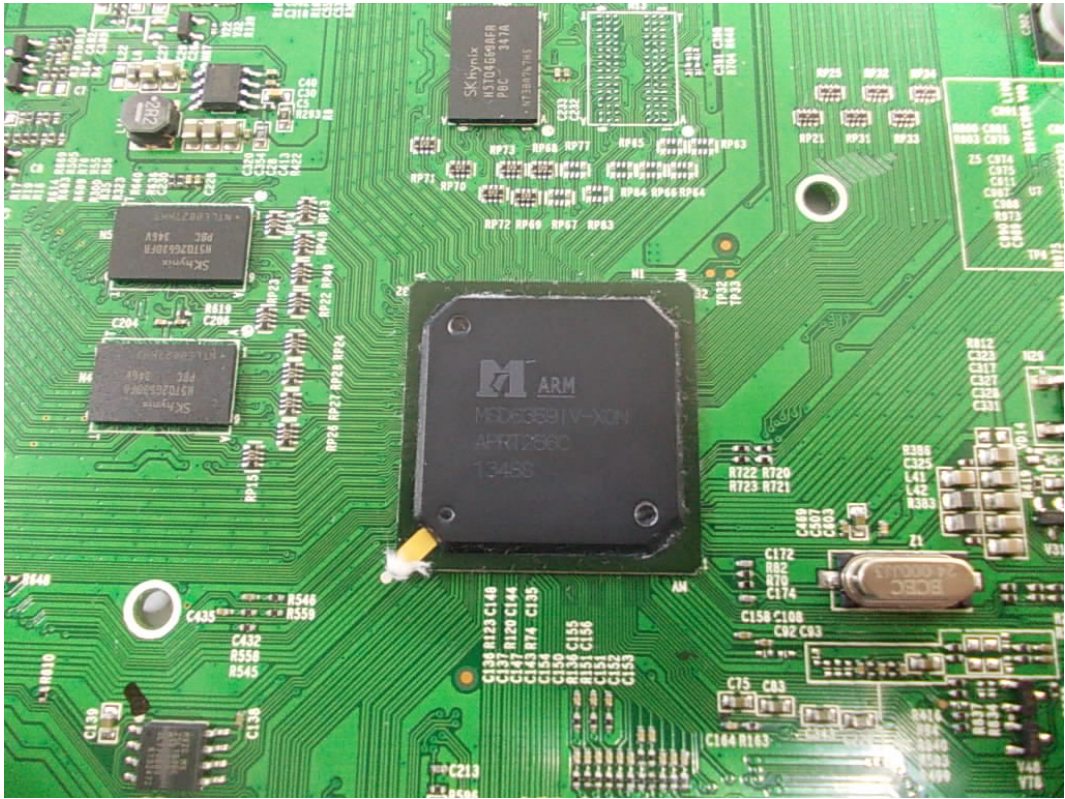


FIGURE 9
LED LCD TV(M/N: 55H7G)
CHIP #2 & CRYSTAL #2 ON MAIN BOARD

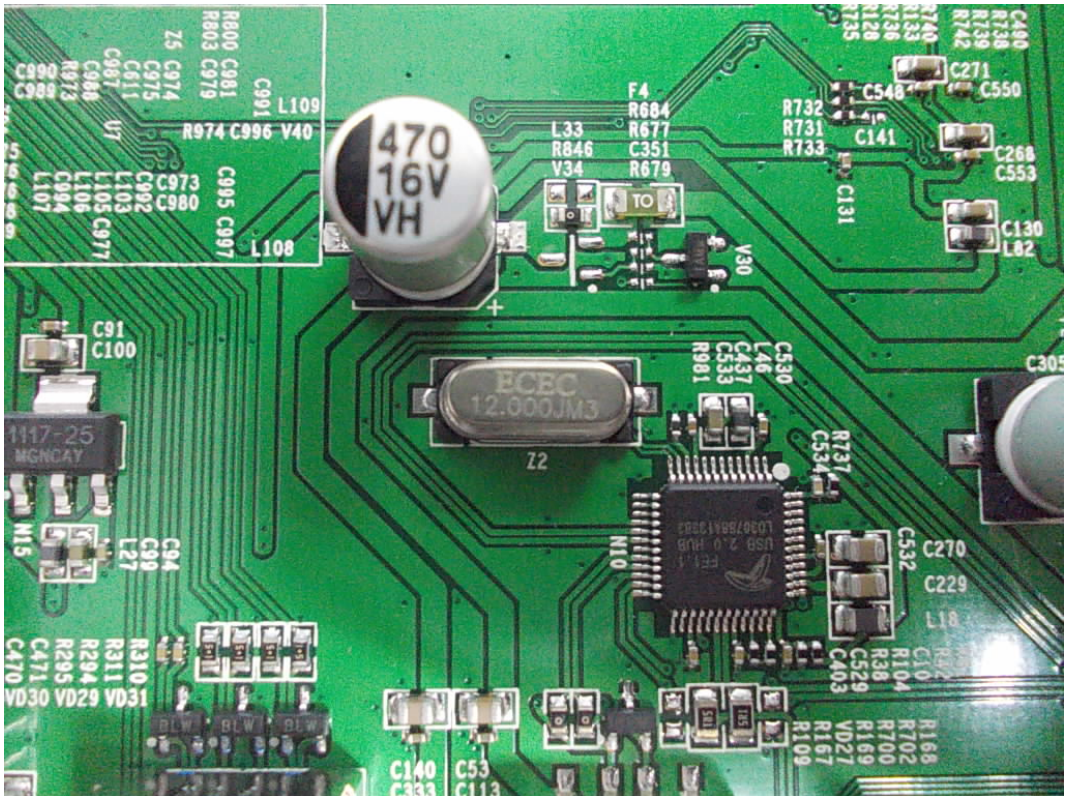


FIGURE 10
LED LCD TV (M/N: 55H7G)
TUNER ON MAIN BOARD

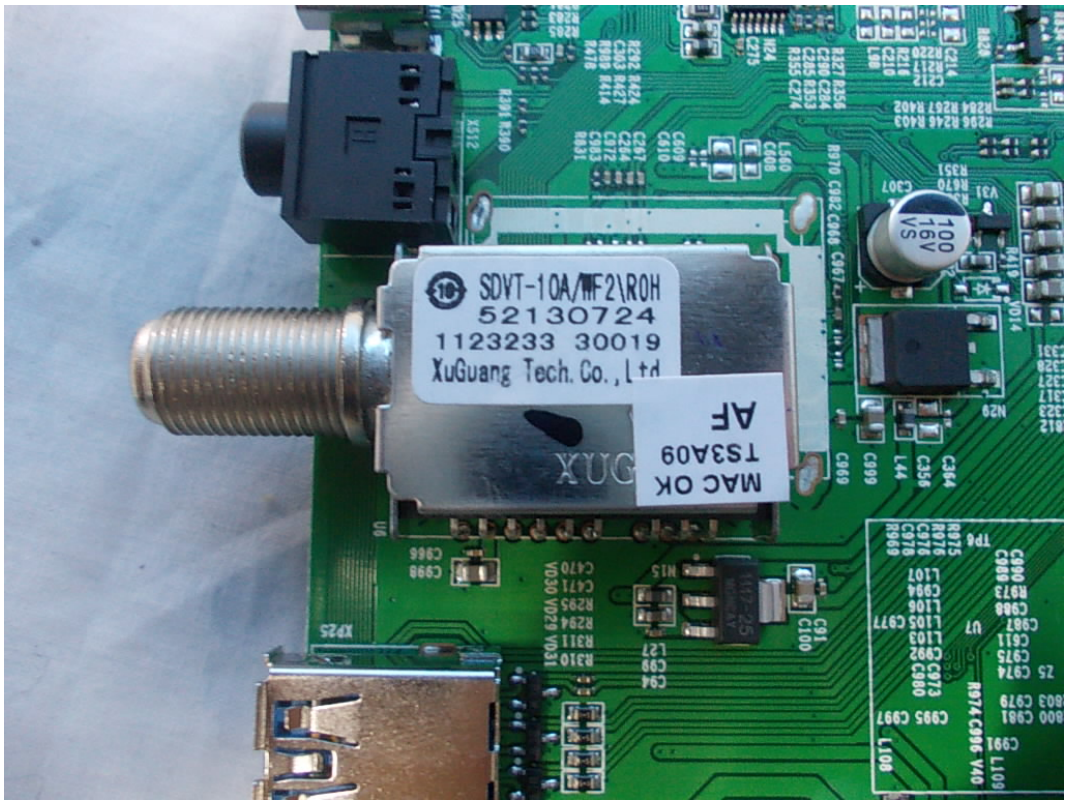


FIGURE 11
LED LCD TV (M/N: 55H7G)
RF BOARD #1 (COMPONENT SIDE)



FIGURE 12
LED LCD TV (M/N: 55H7G)
RF BOARD #1 (SOLDERED SIDE)

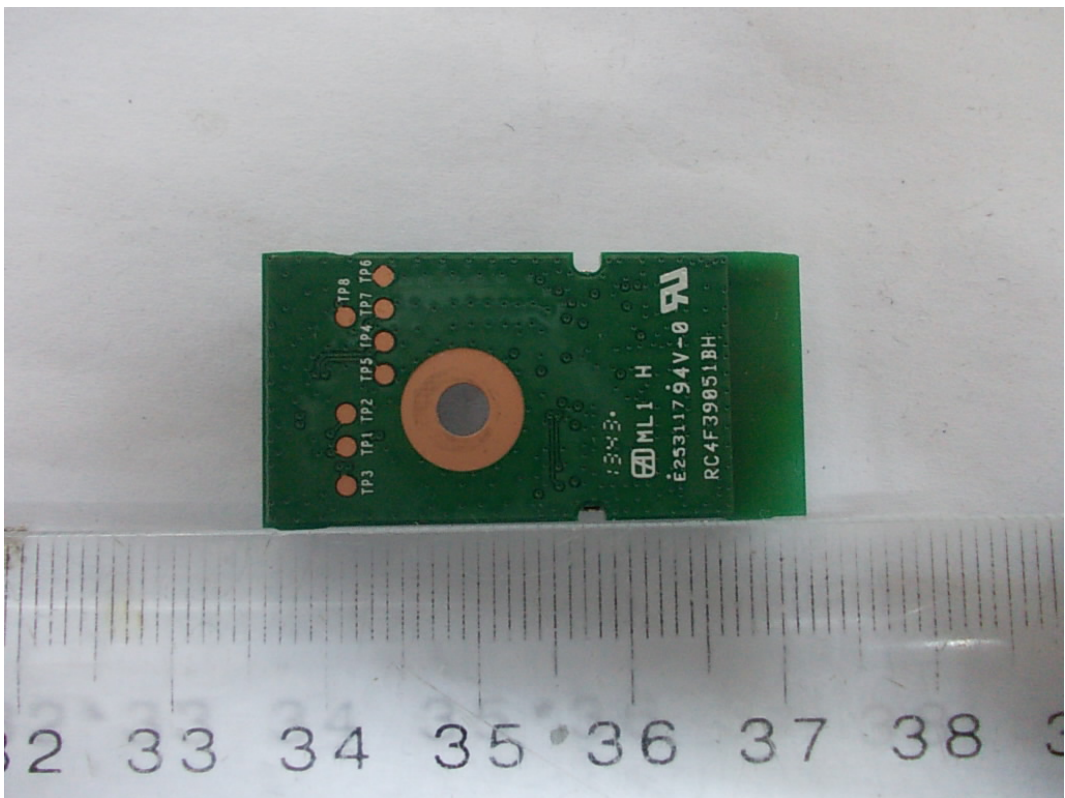


FIGURE 13
LED LCD TV (M/N: 55H7G)
RF BOARD #2 (COMPONENT SIDE)



FIGURE 14
LED LCD TV (M/N: 55H7G)
RF BOARD #2 (SOLDERED SIDE)

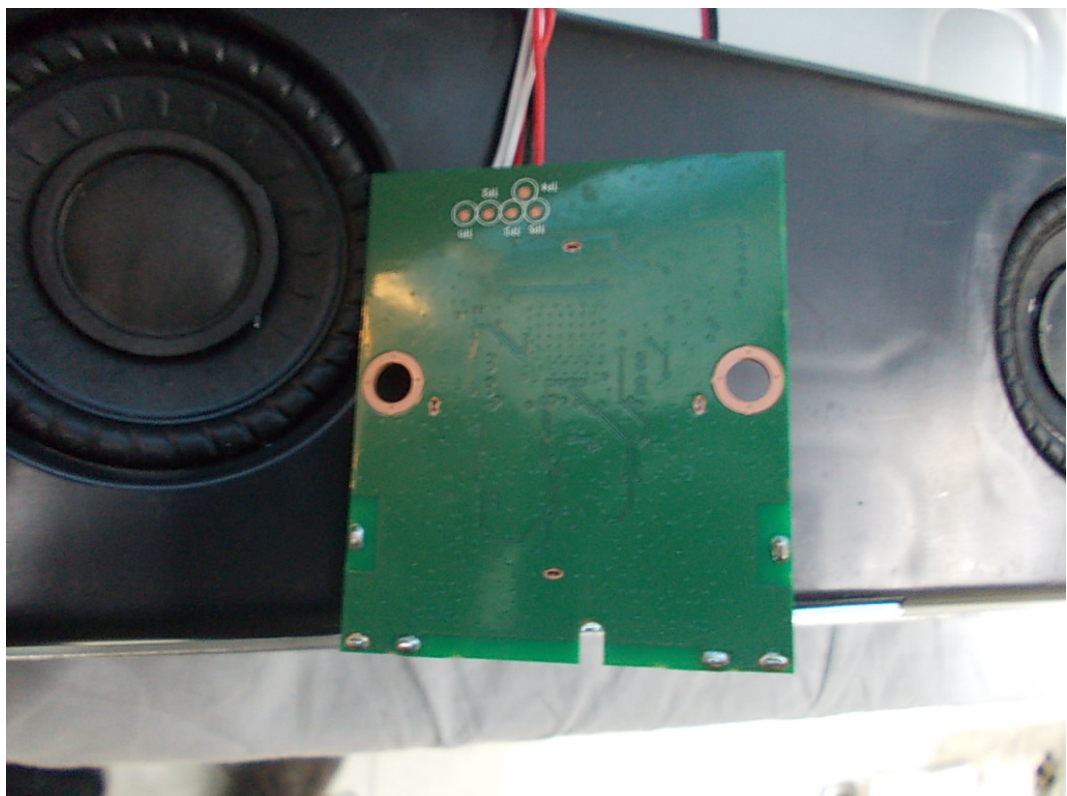


FIGURE 15
LED LCD TV (M/N: 55H7G)
KEY BOARD (COMPONENT SIDE)

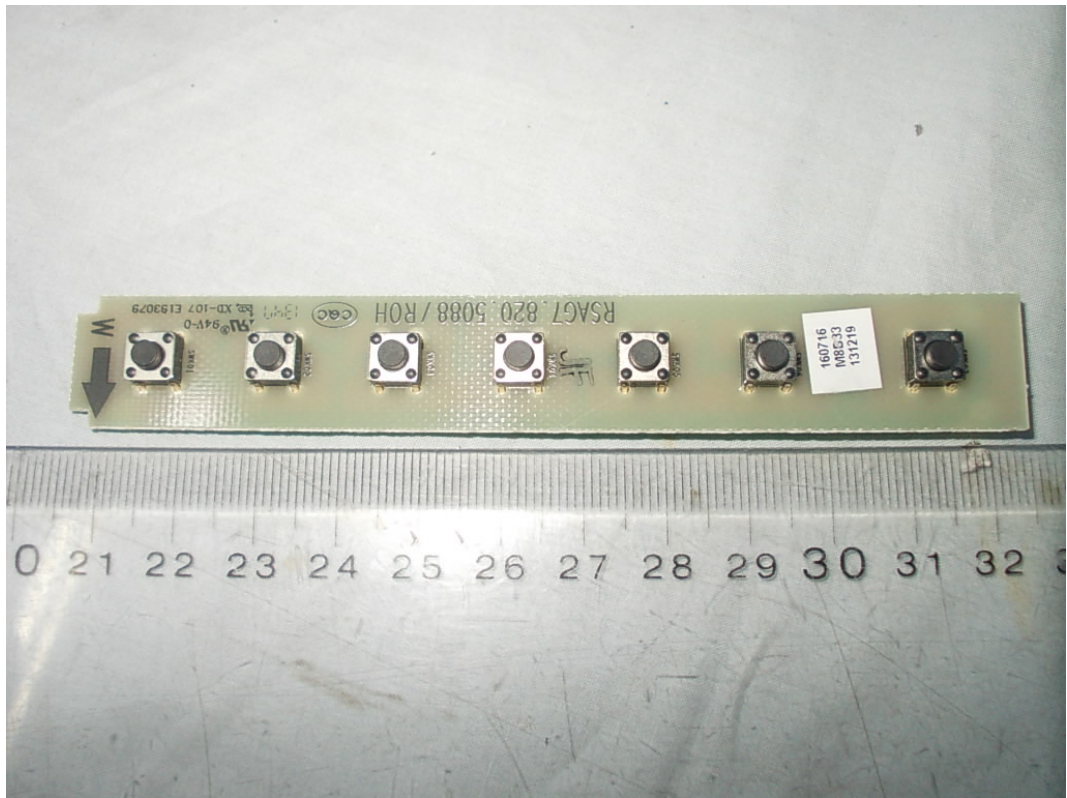


FIGURE 16
LED LCD TV (M/N: 55H7G)
KEY BOARD (SOLDERED SIDE)

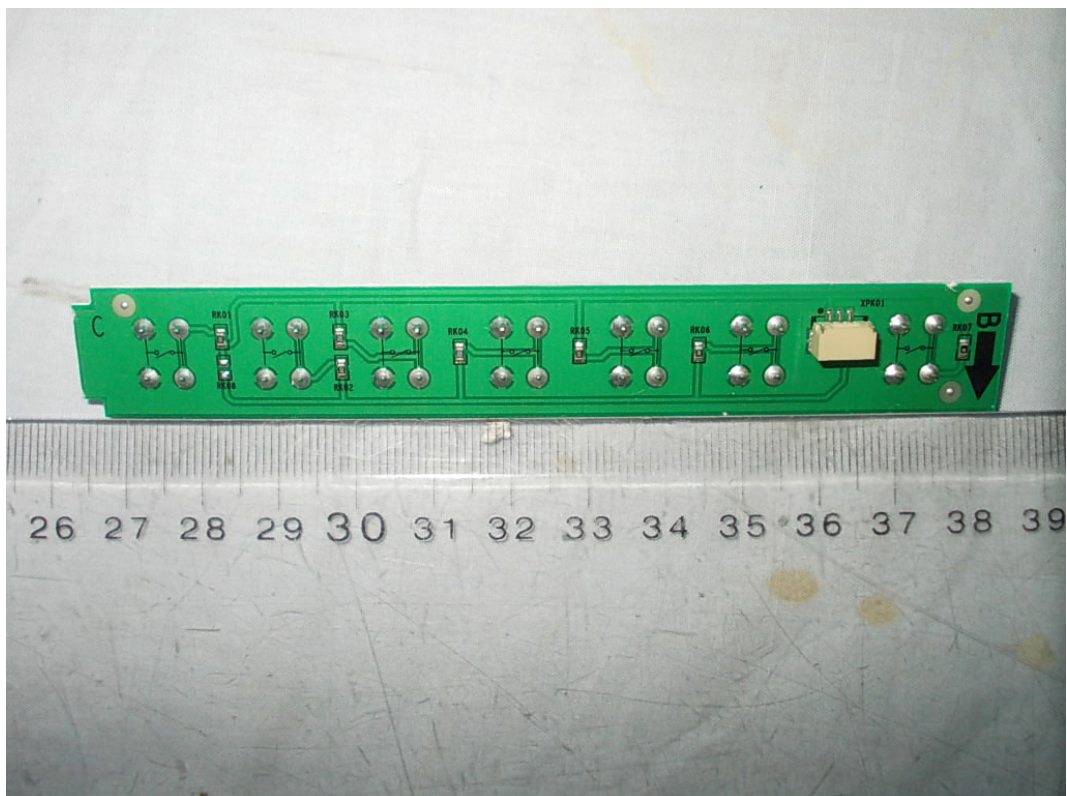


FIGURE 17
LED LCD TV (M/N: 55H7G)
LCD PANEL CONTROL BOARD (COMPONENT SIDE)

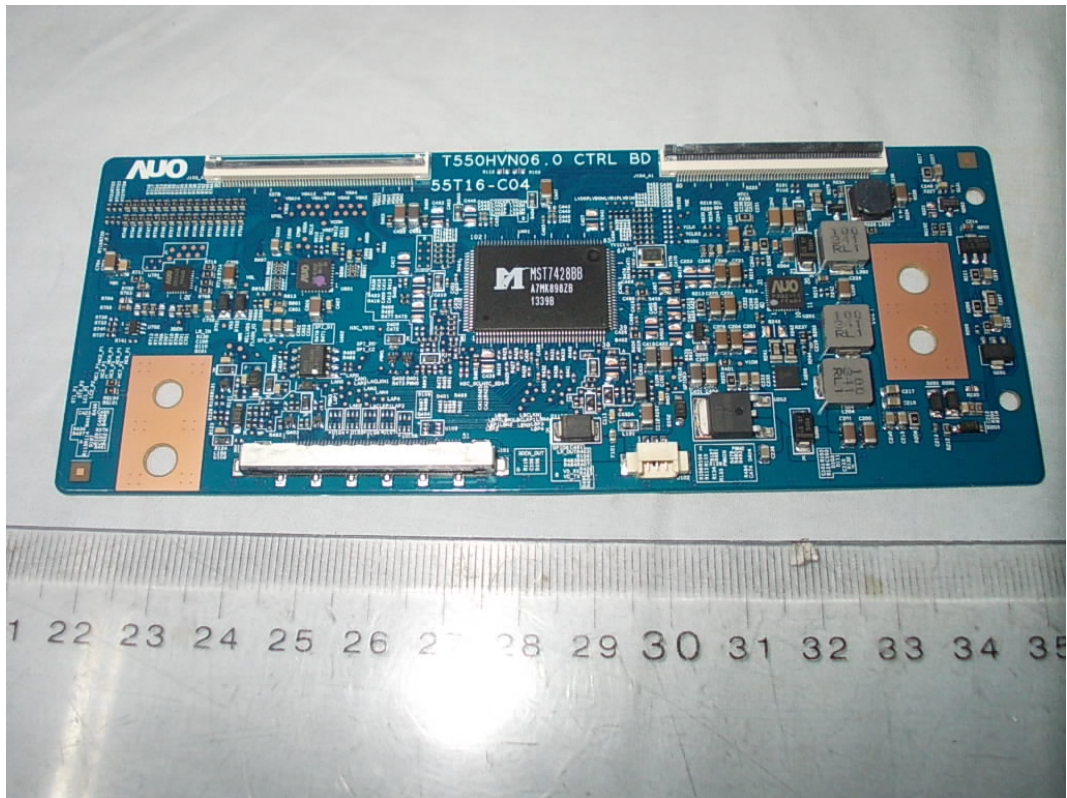


FIGURE 18
LED LCD TV (M/N: 55H7G)
LCD PANEL CONTROL BOARD (SOLDERED SIDE)

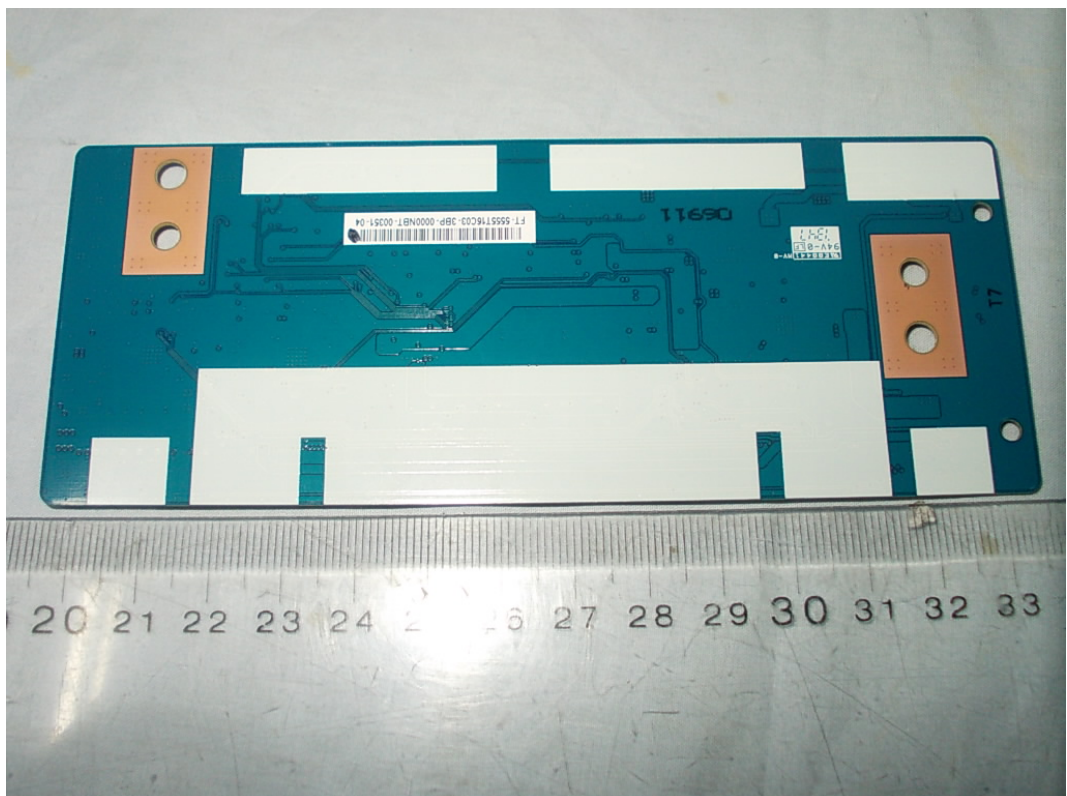


FIGURE 19
LED LCD TV (M/N: 55H7G)
DEBUG #1

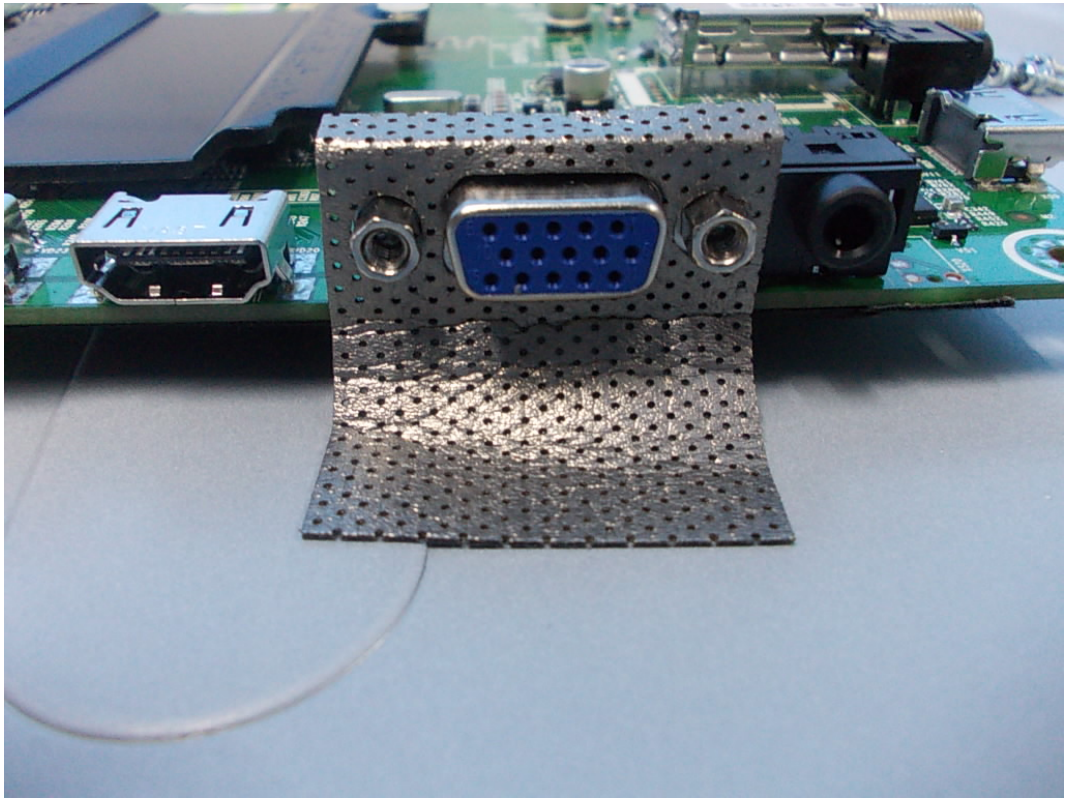


FIGURE 20
LED LCD TV (M/N: 55H7G)
DEBUG #2

