

FIGURE 1
LED LCD TV (M/N: 50H7G)
COVER REMOVED #1

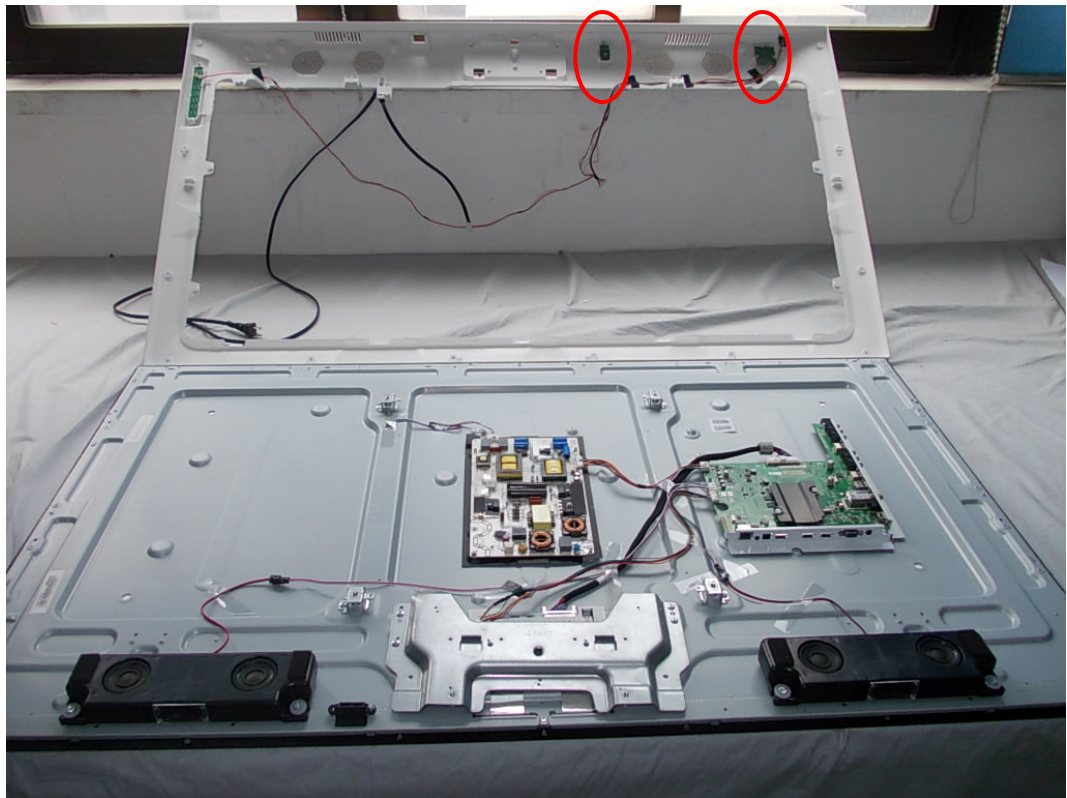


FIGURE 2
LED LCD TV (M/N: 50H7G)
COVER REMOVED #2

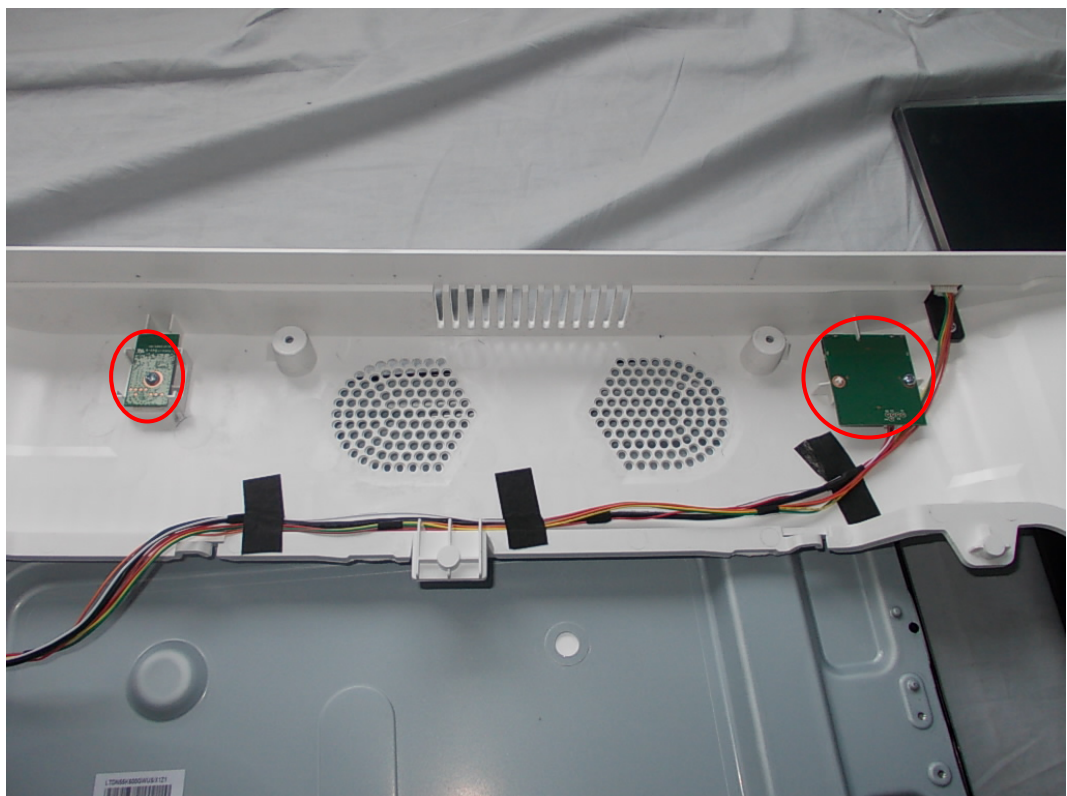


FIGURE 3
LED LCD TV (M/N: 50H7G)
LCD PANEL LABEL

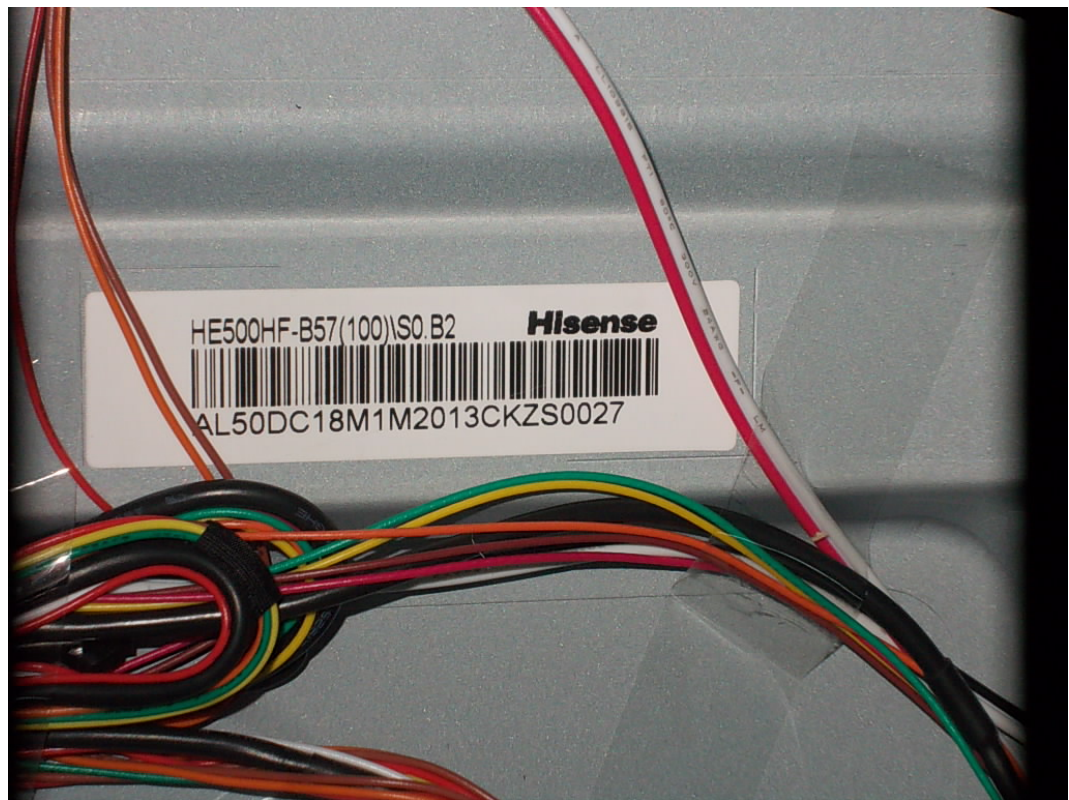


FIGURE 4
LED LCD TV (M/N: 50H7G)
POWER BOARD (COMPONENT SIDE)



FIGURE 5
LED LCD TV (M/N: 50H7G)
POWER BOARD (SOLDERED SIDE)

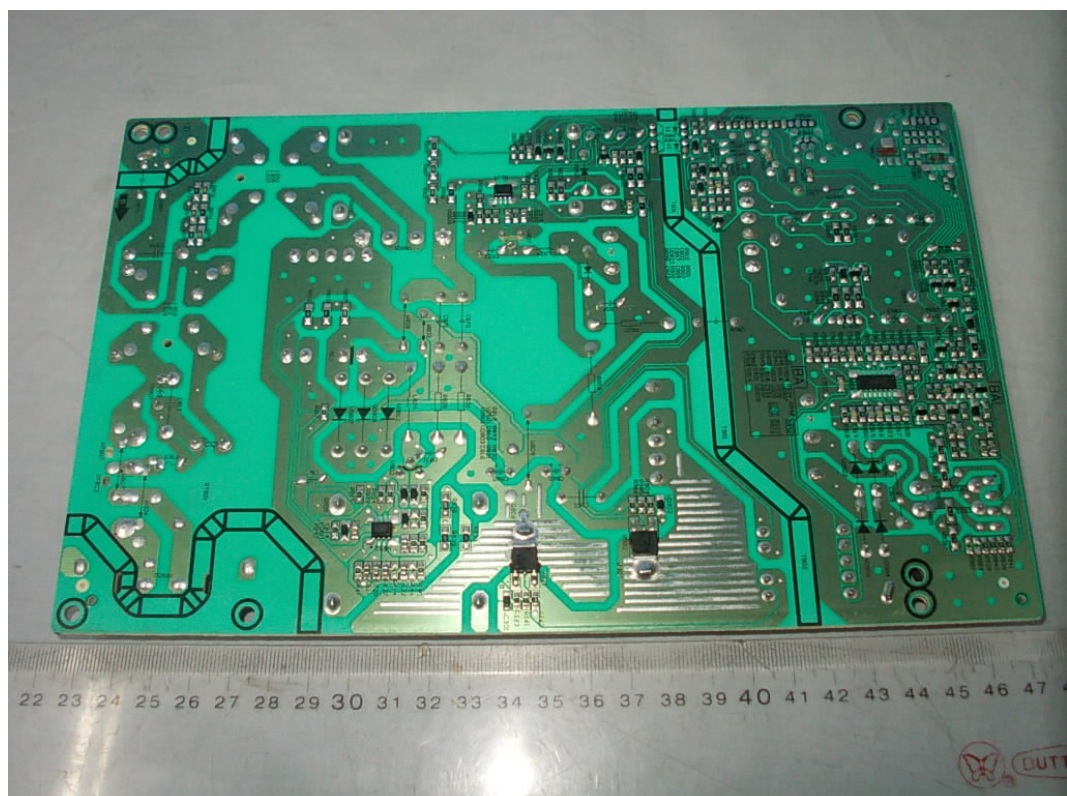


FIGURE 6
LED LCD TV (M/N: 50H7G)
MAIN BOARD (COMPONENT SIDE)



FIGURE 7
LED LCD TV (M/N: 50H7G)
MAIN BOARD (SOLDERED SIDE)



FIGURE 8
LED LCD TV(M/N: 50H7G)
CHIP #1 & CRYSTAL #1 ON MAIN BOARD

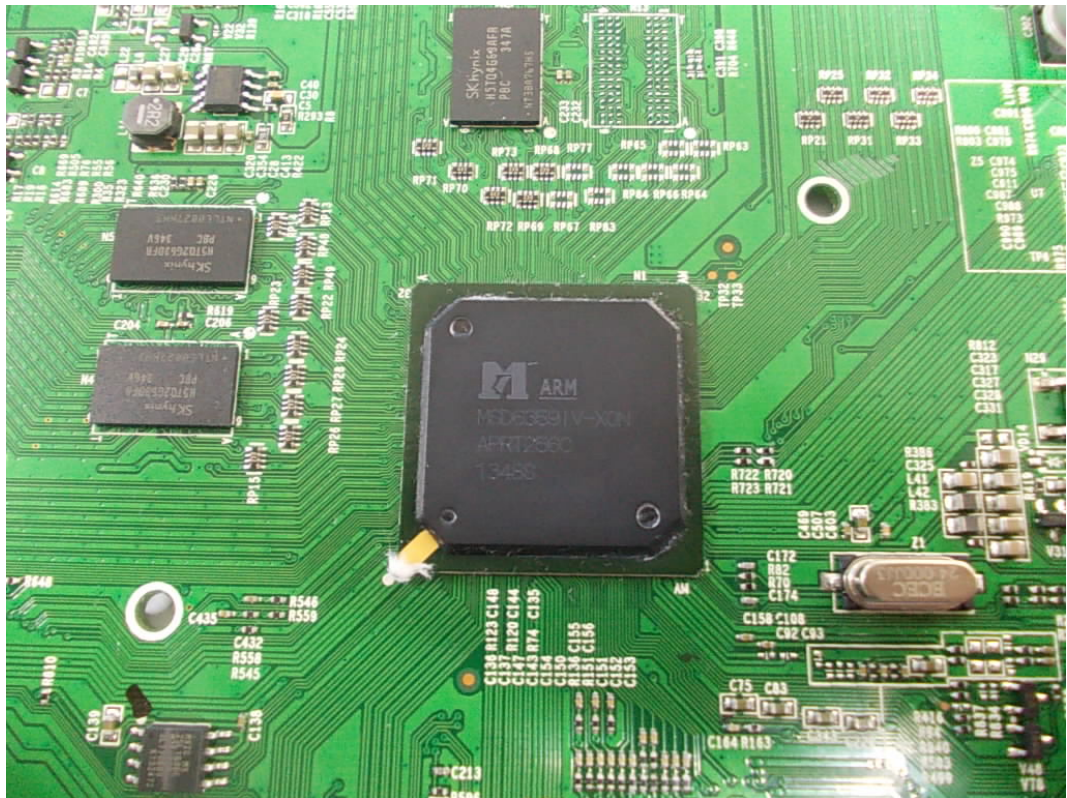


FIGURE 9
LED LCD TV(M/N: 50H7G)
CHIP #2 & CRYSTAL #2 ON MAIN BOARD

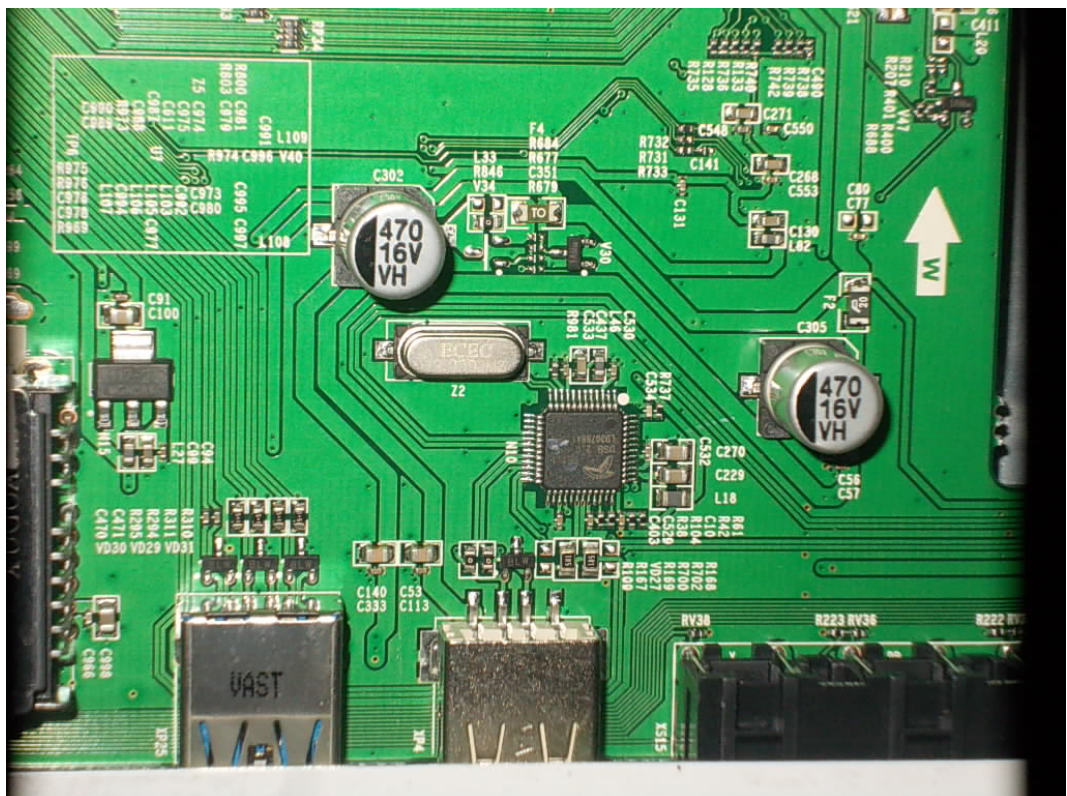


FIGURE 10
LED LCD TV(M/N: 50H7G)
TUNER ON MAIN BOARD



FIGURE 11
LED LCD TV (M/N: 50H7G)
IR BOARD (COMPONENT SIDE)

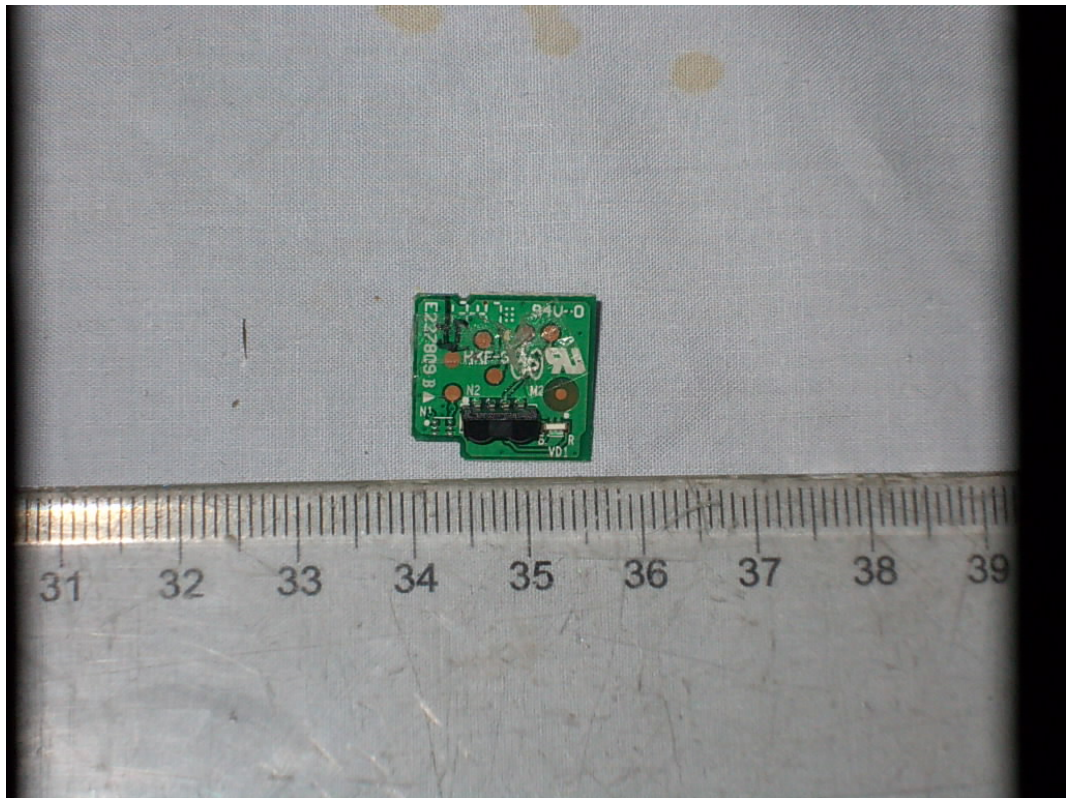


FIGURE 12
LED LCD TV (M/N: 50H7G)
IR BOARD (SOLDERED SIDE)



FIGURE 13
LED LCD TV (M/N: 50H7G)
RF BOARD #1 (COMPONENT SIDE)



FIGURE 14
LED LCD TV (M/N: 50H7G)
RF BOARD #1 (SOLDERED SIDE)

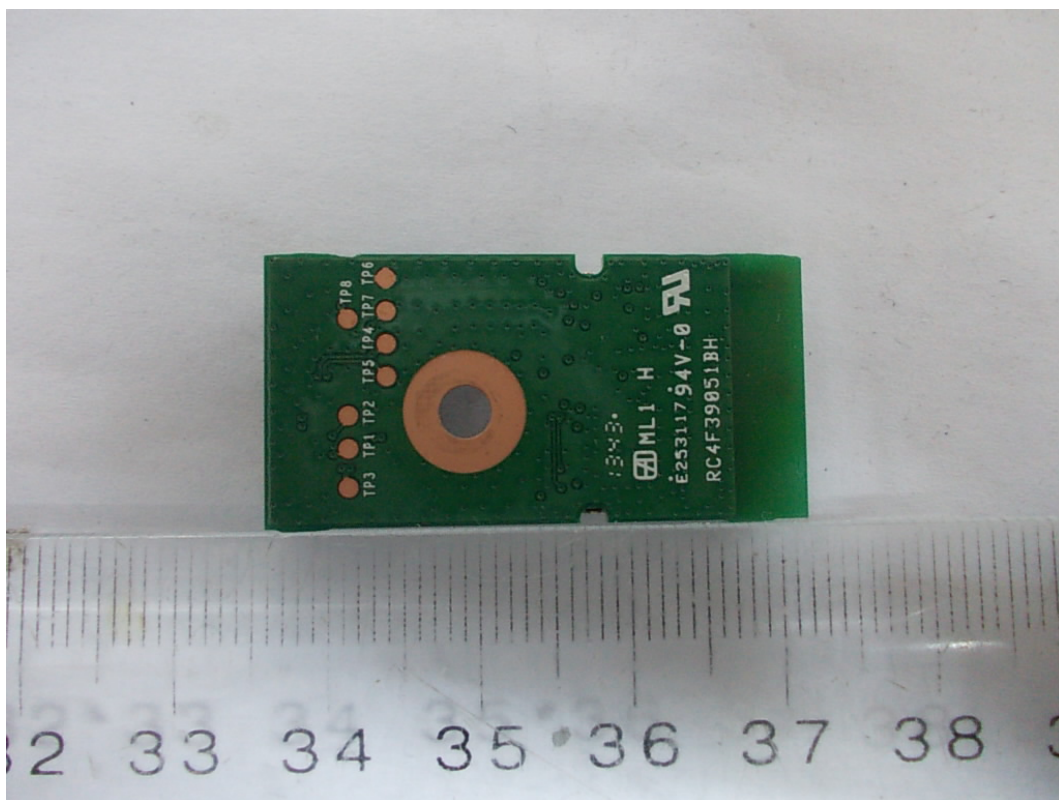


FIGURE 15
LED LCD TV (M/N: 50H7G)
RF BOARD #2 (COMPONENT SIDE)



FIGURE 16
LED LCD TV (M/N: 50H7G)
RF BOARD #2 (SOLDERED SIDE)

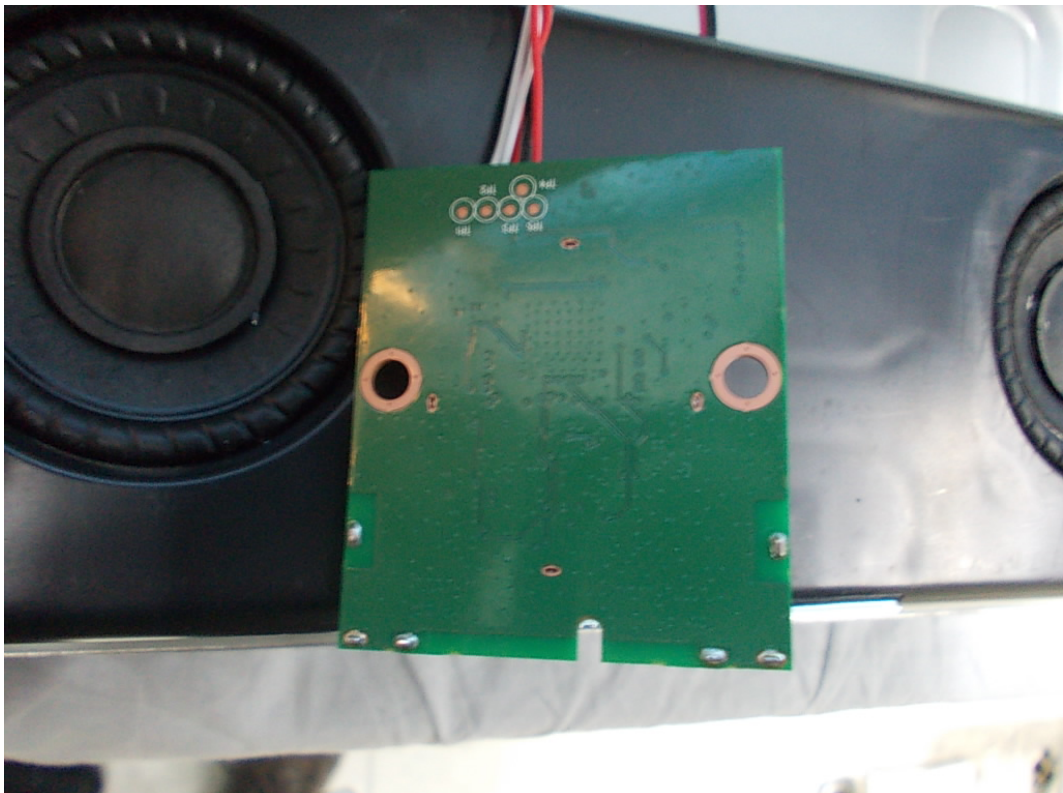


FIGURE 19
LED LCD TV (M/N: 50H7G)
LCD PANEL CONTROL BOARD (COMPONENT SIDE)



FIGURE 20
LED LCD TV (M/N: 50H7G)
LCD PANEL CONTROL BOARD (SOLDERED SIDE)

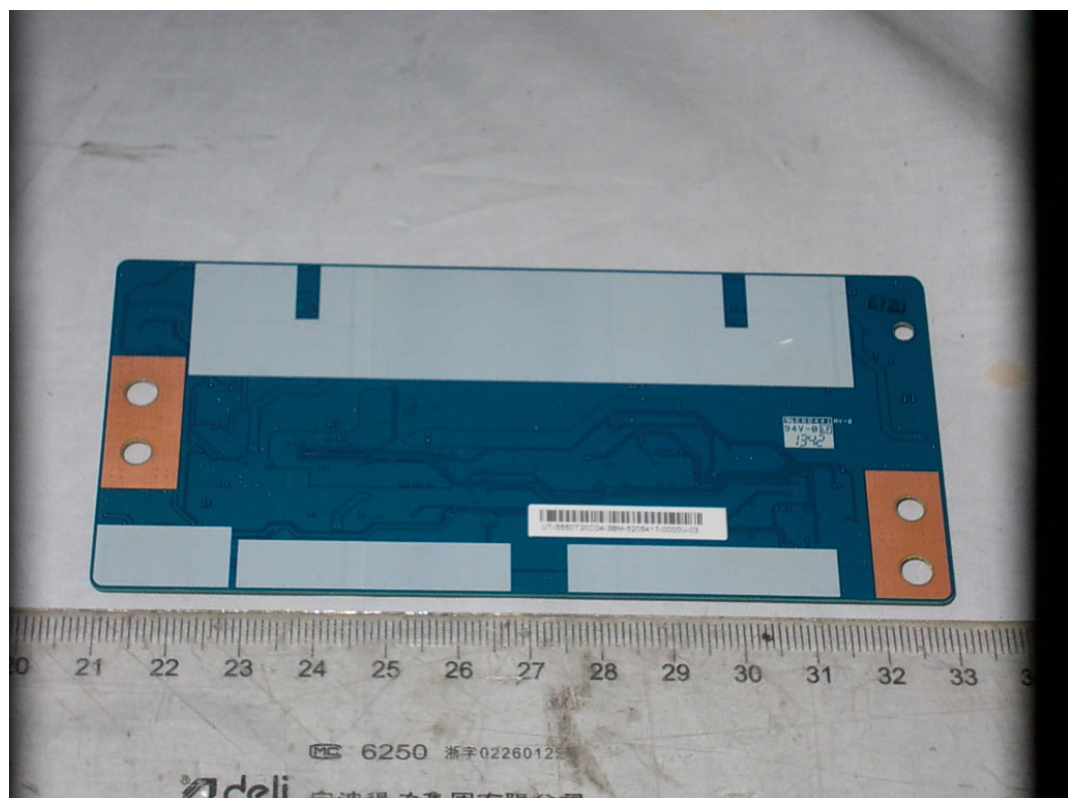


FIGURE 21
LED LCD TV (M/N: 50H7G)
DEBUG #1

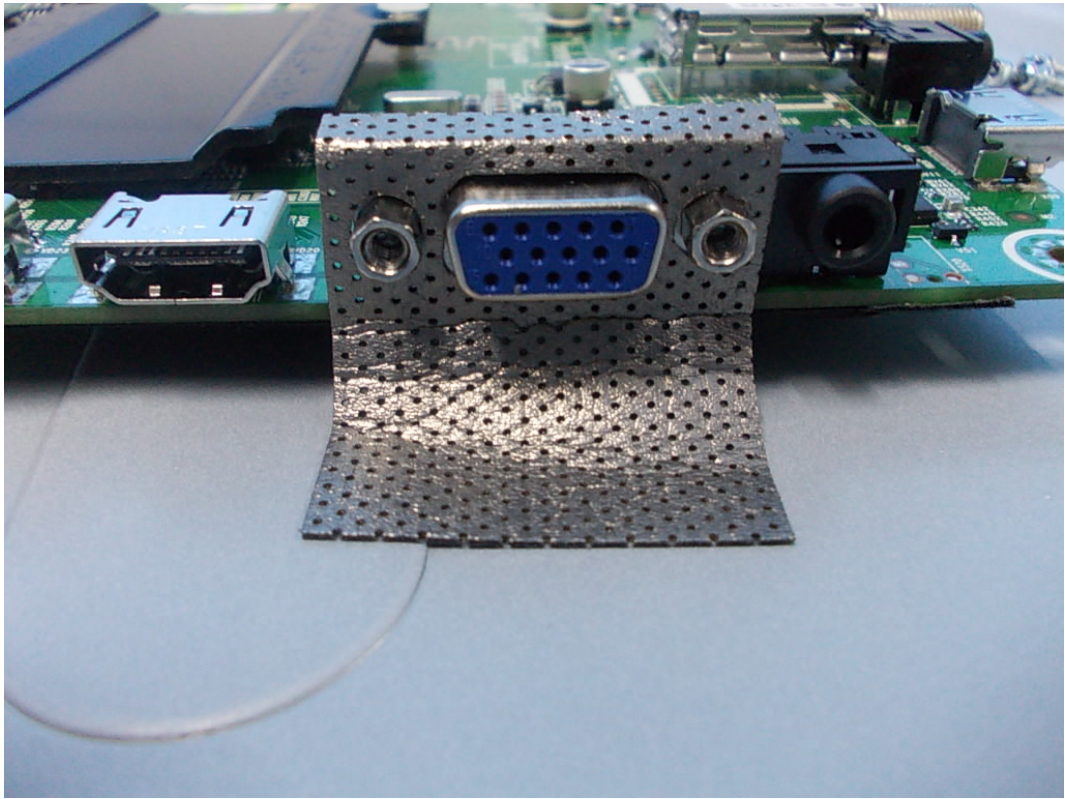


FIGURE 22
LED LCD TV (M/N: 50H7G)
DEBUG #2

