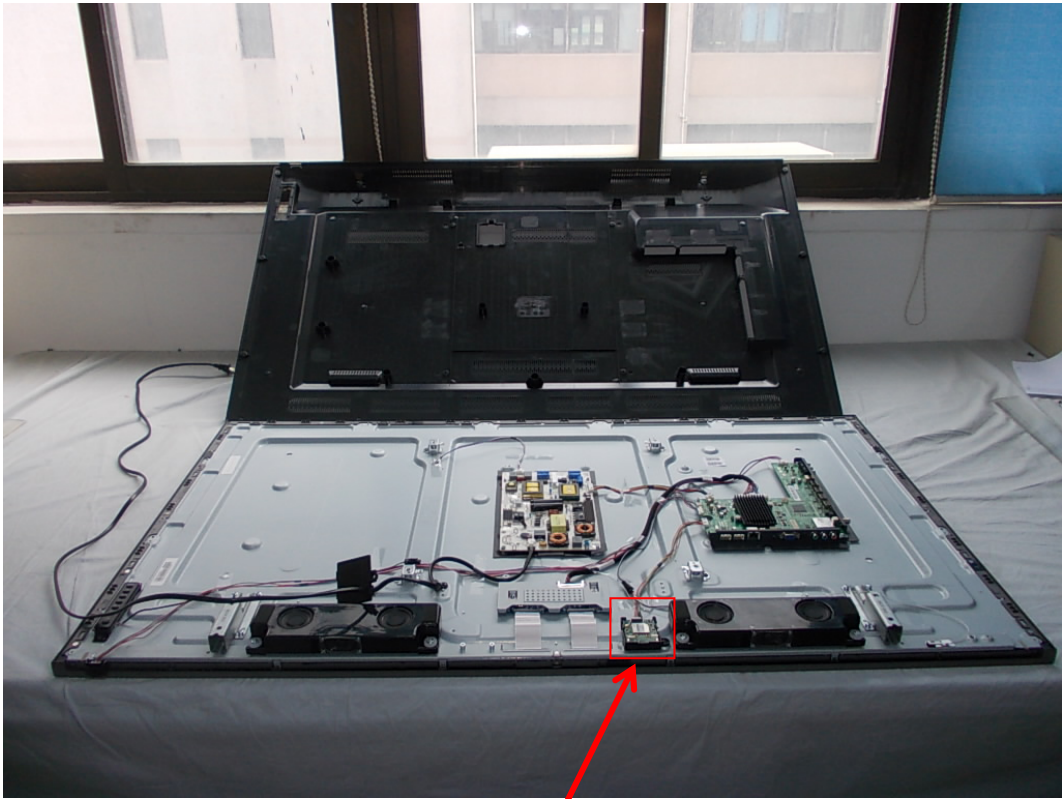


FIGURE 1
LED LCD TV (M/N: 55H6SG)
COVER REMOVED



RF Board

FIGURE 2
LED LCD TV (M/N: 55H6SG)
LCD PANEL LABEL



FIGURE 3
LED LCD TV (M/N: 55H6SG)
POWER BOARD (COMPONENT SIDE)

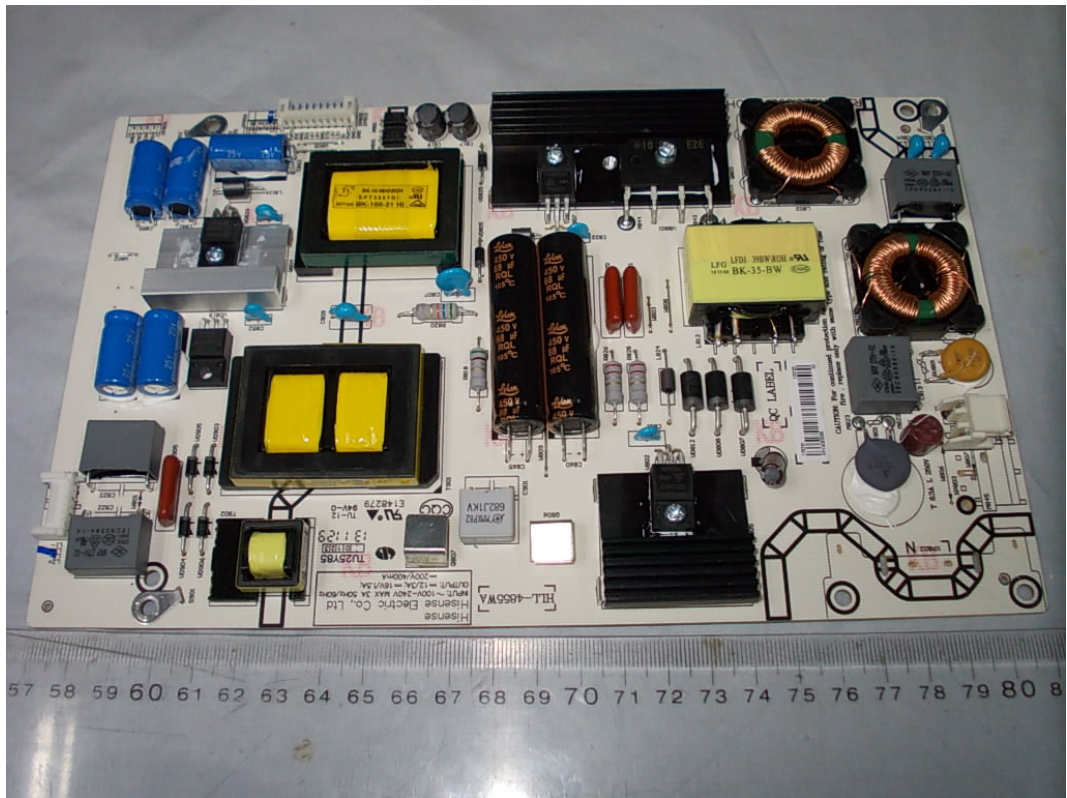
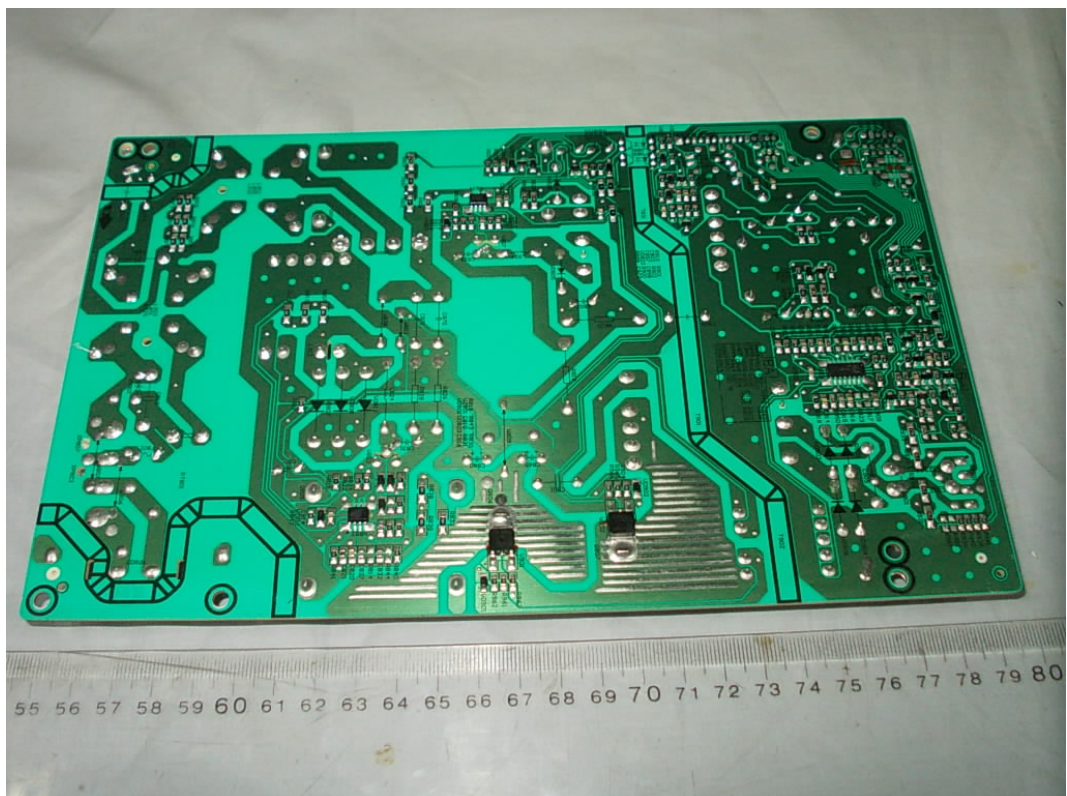


FIGURE 4
LED LCD TV (M/N: 55H6SG)
POWER BOARD (SOLDERED SIDE)



*FIGURE 5
LED LCD TV (M/N: 55H6SG)
MAIN BOARD (COMPONENT SIDE)*



*FIGURE 6
LED LCD TV (M/N: 55H6SG)
MAIN BOARD (SOLDERED SIDE)*

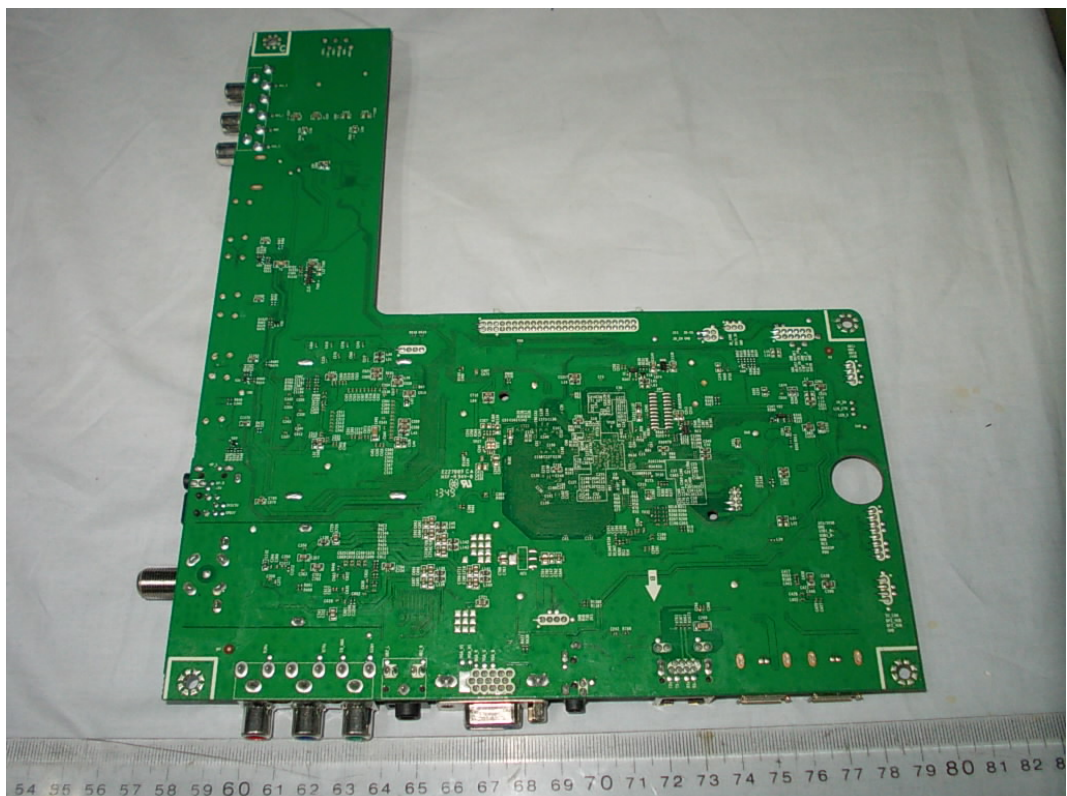


FIGURE 11
LED LCD TV (M/N: 55H6SG)
TUNER ON MAIN BOARD

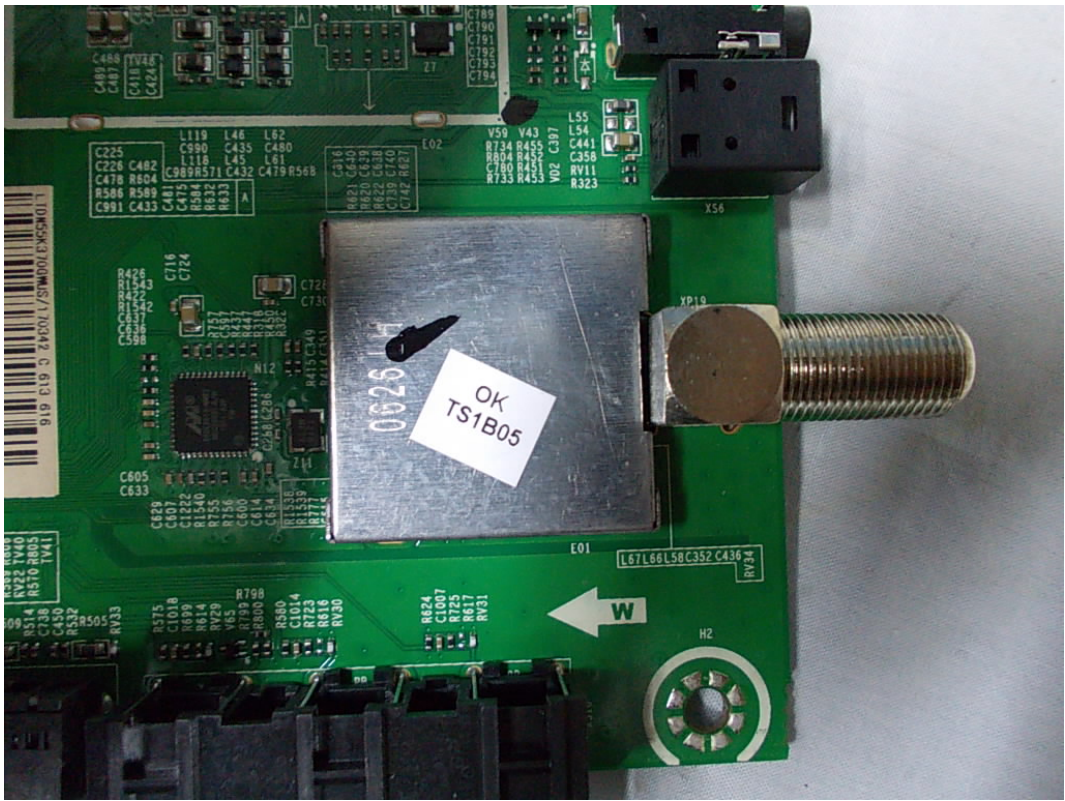


FIGURE 12
LED LCD TV (M/N: 55H6SG)
KEY BOARD (COMPONENT SIDE)



FIGURE 13
LED LCD TV (M/N: 55H6SG)
KEY BOARD (SOLDERED SIDE)

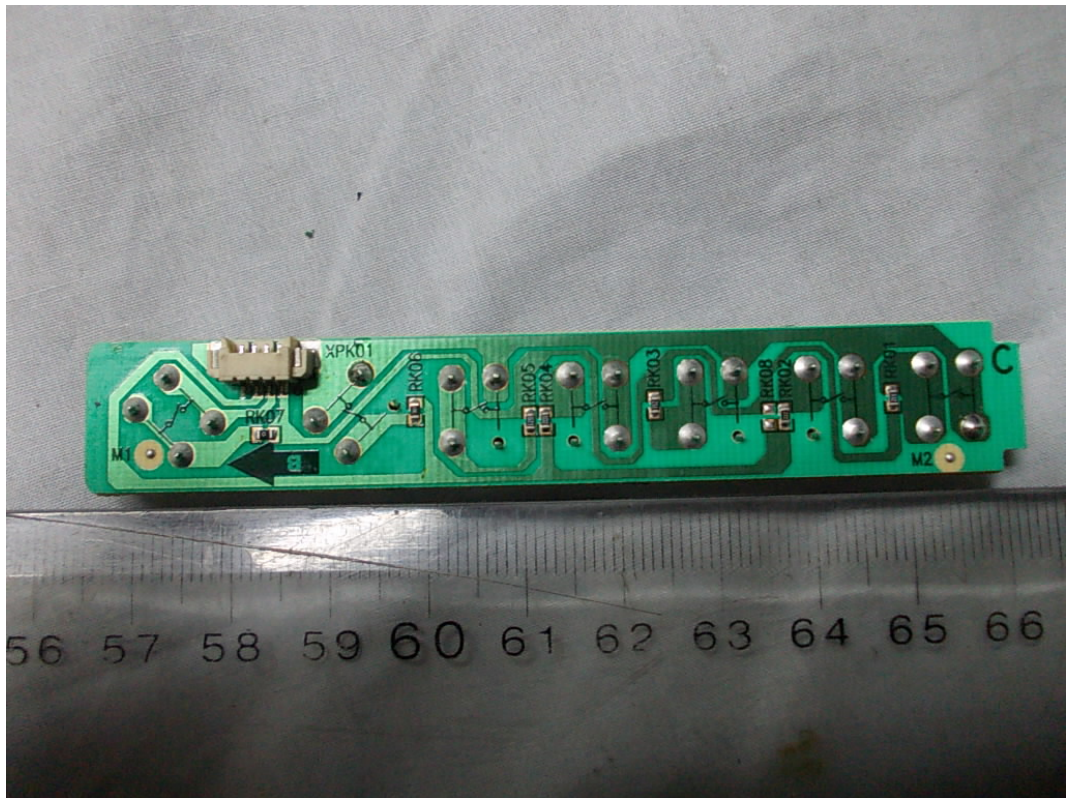


FIGURE 14
LED LCD TV (M/N: 55H6SG)
IR BOARD

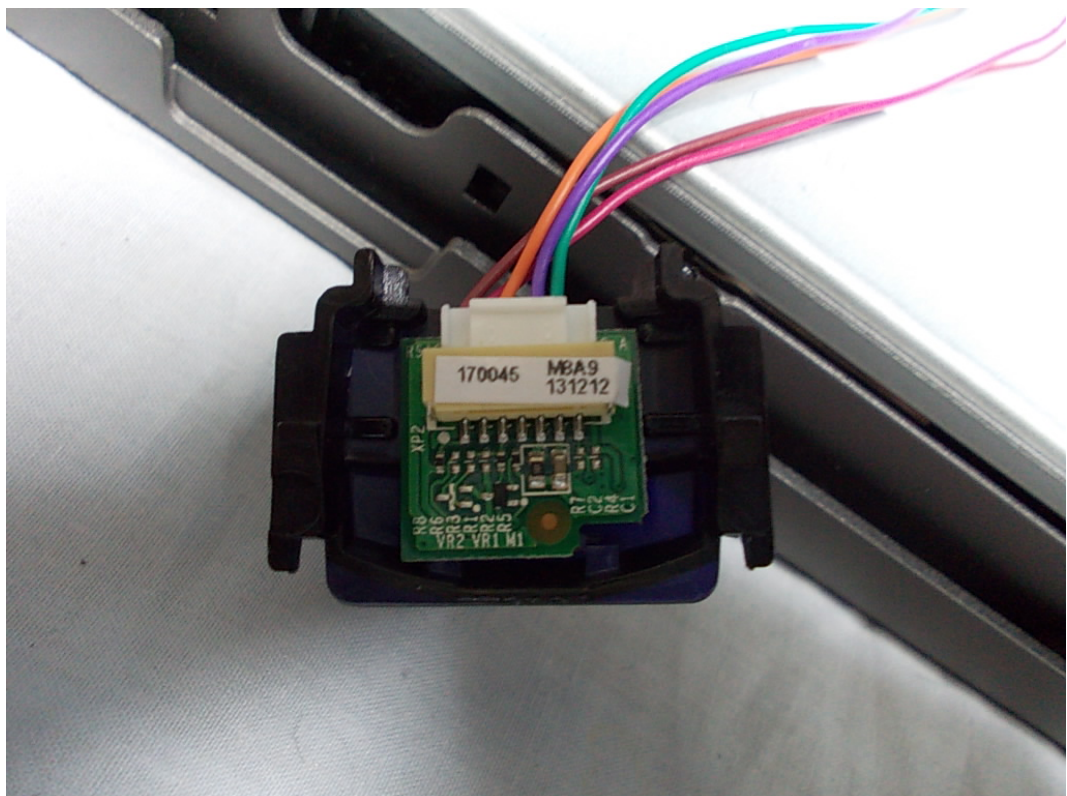


FIGURE 15
LED LCD TV (M/N: 55H6SG)
RF BOARD (COMPONENT SIDE)

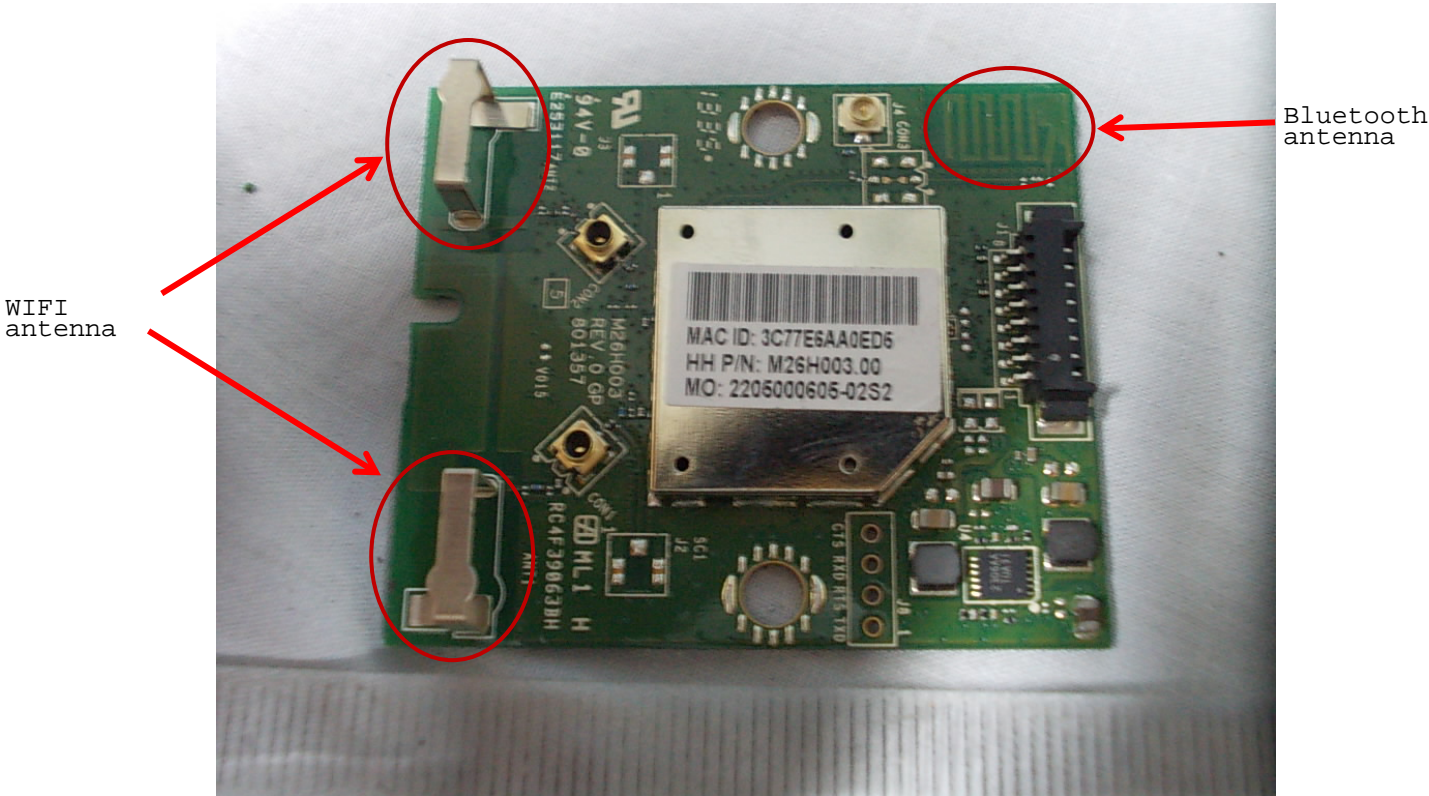


FIGURE 16
LED LCD TV (M/N: 55H6SG)
RF BOARD (SOLDERED SIDE)

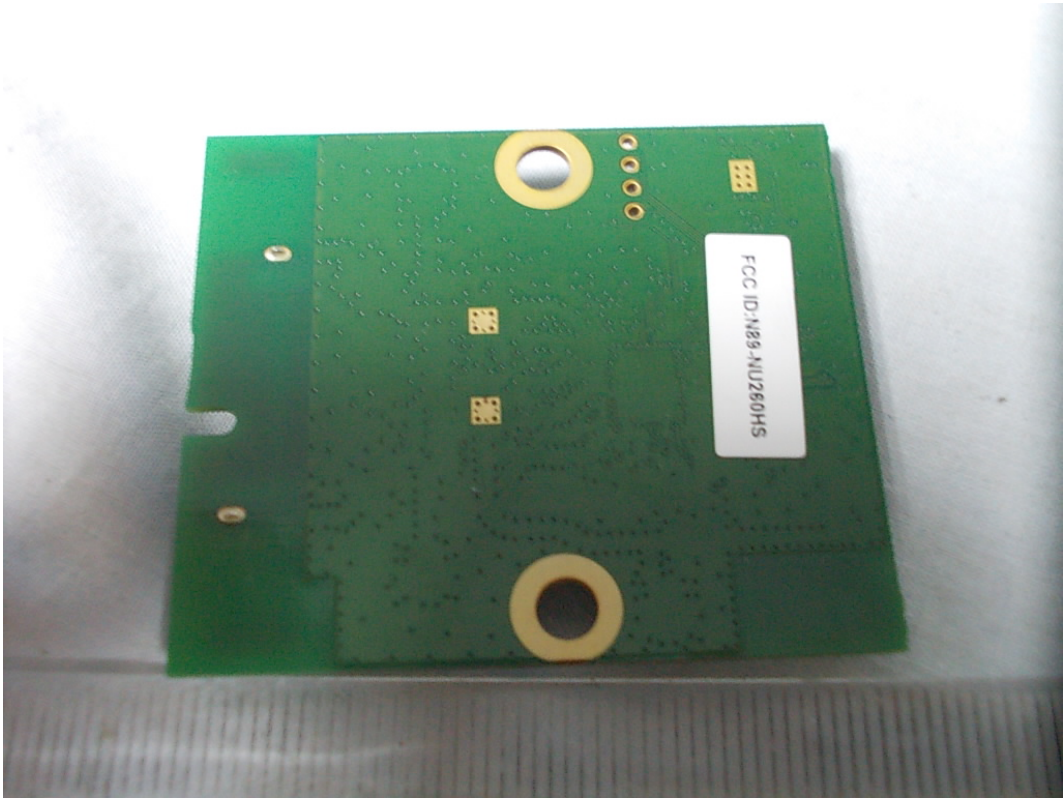


FIGURE 17
LED LCD TV (M/N: 55H6SG)
LCD PANEL CONTROL BOARD (COMPONENT SIDE)

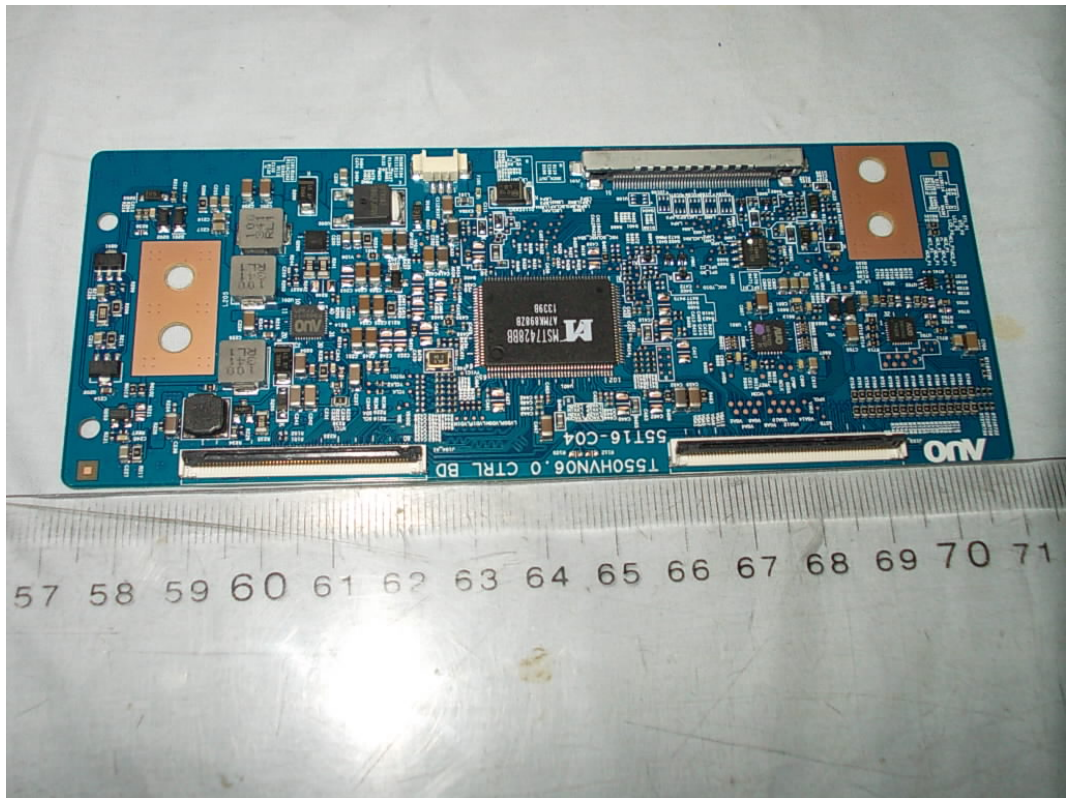


FIGURE 18
LED LCD TV (M/N: 55H6SG)
LCD PANEL CONTROL BOARD (SOLDERED SIDE)

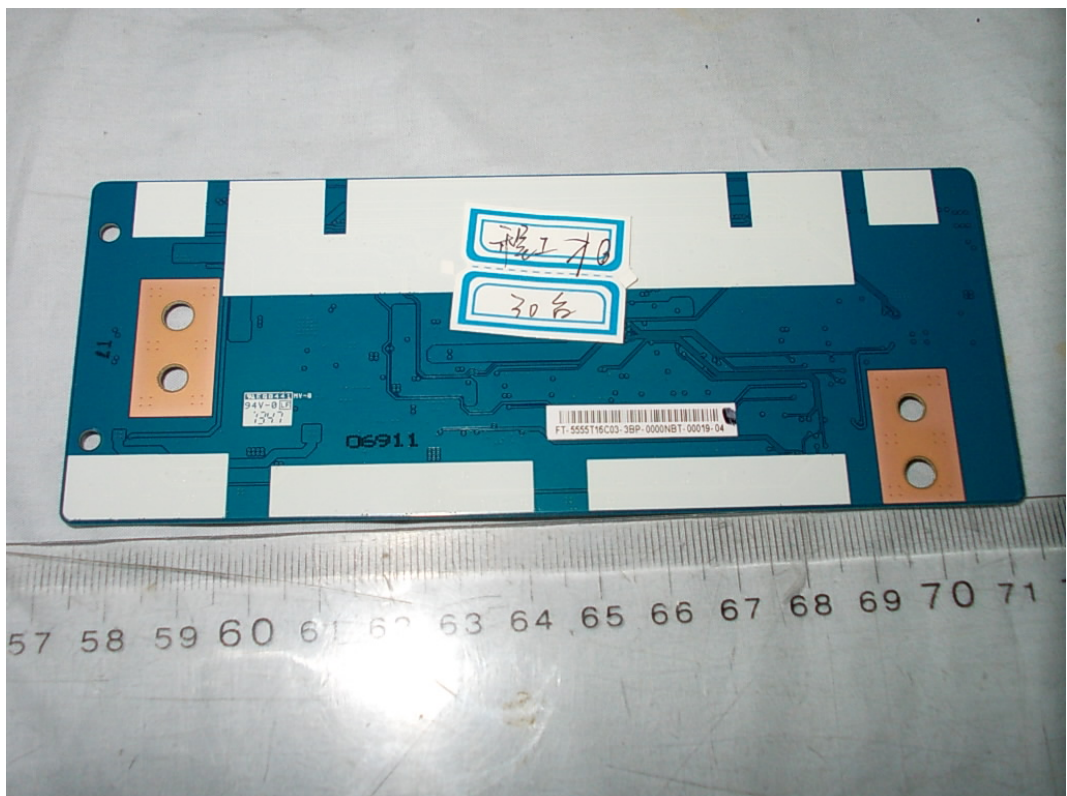


FIGURE 19
LED LCD TV (M/N: 55H6SG)
CHIP & CRYSTAL ON LCD PANEL CONTROL BOARD

