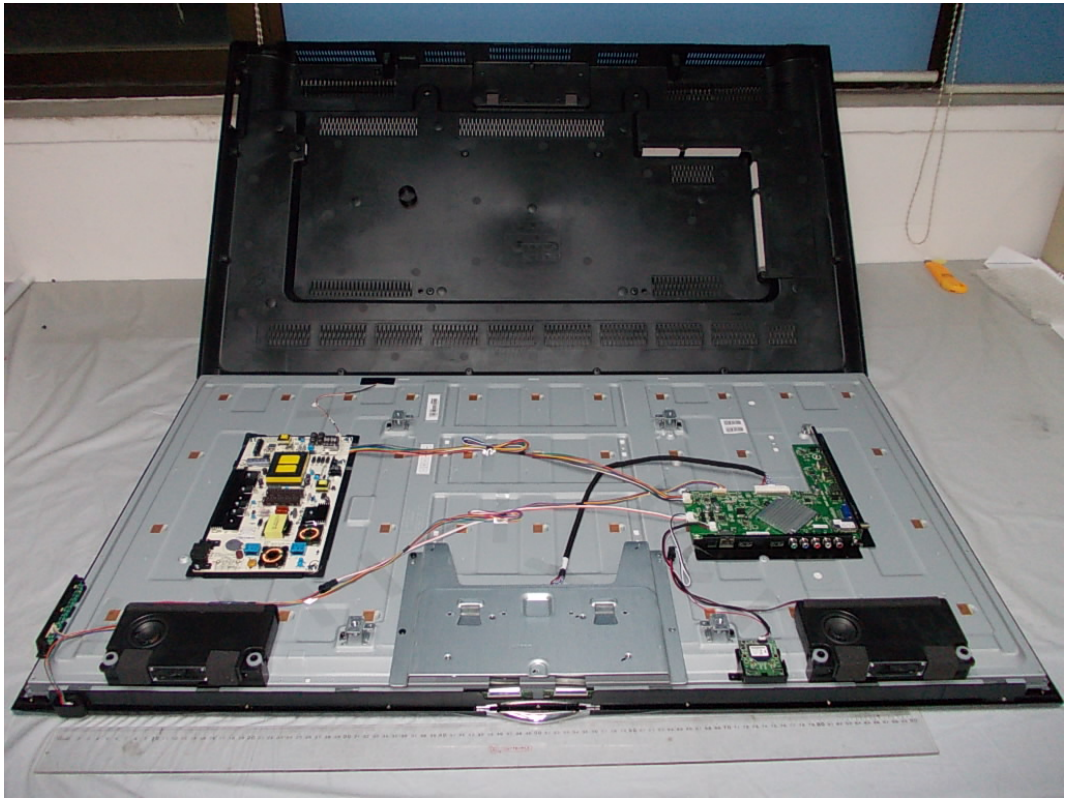


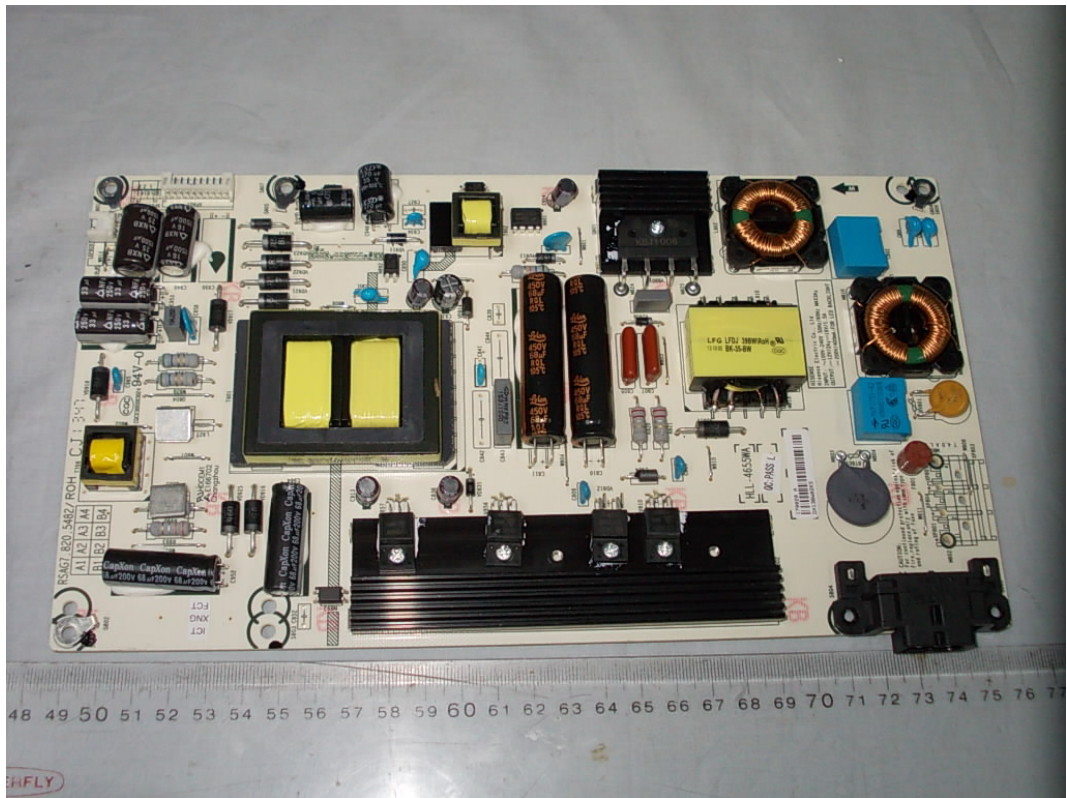
*FIGURE 1*  
*LED LCD TV (M/N: 50H5G)*  
*COVER REMOVED*



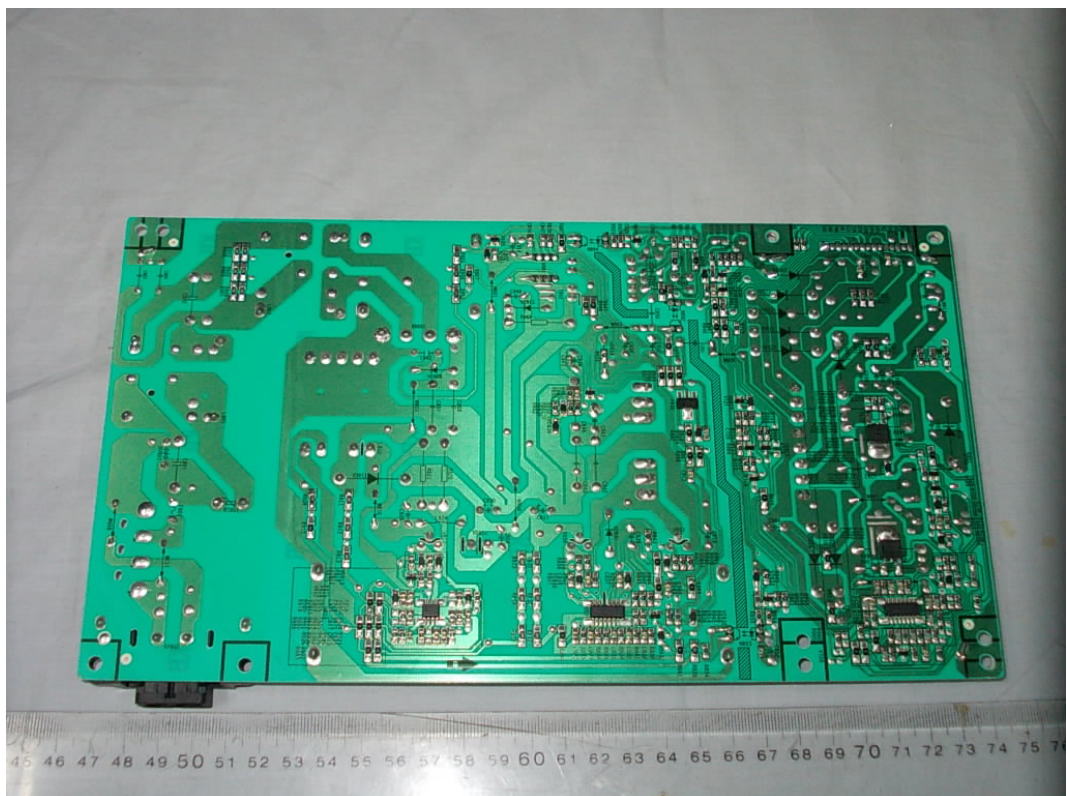
*FIGURE 2*  
*LED LCD TV (M/N: 50H5G)*  
*LCD PANEL LABEL*



*FIGURE 3*  
*LED LCD TV (M/N: 50H5G)*  
*POWER BOARD (COMPONENT SIDE)*

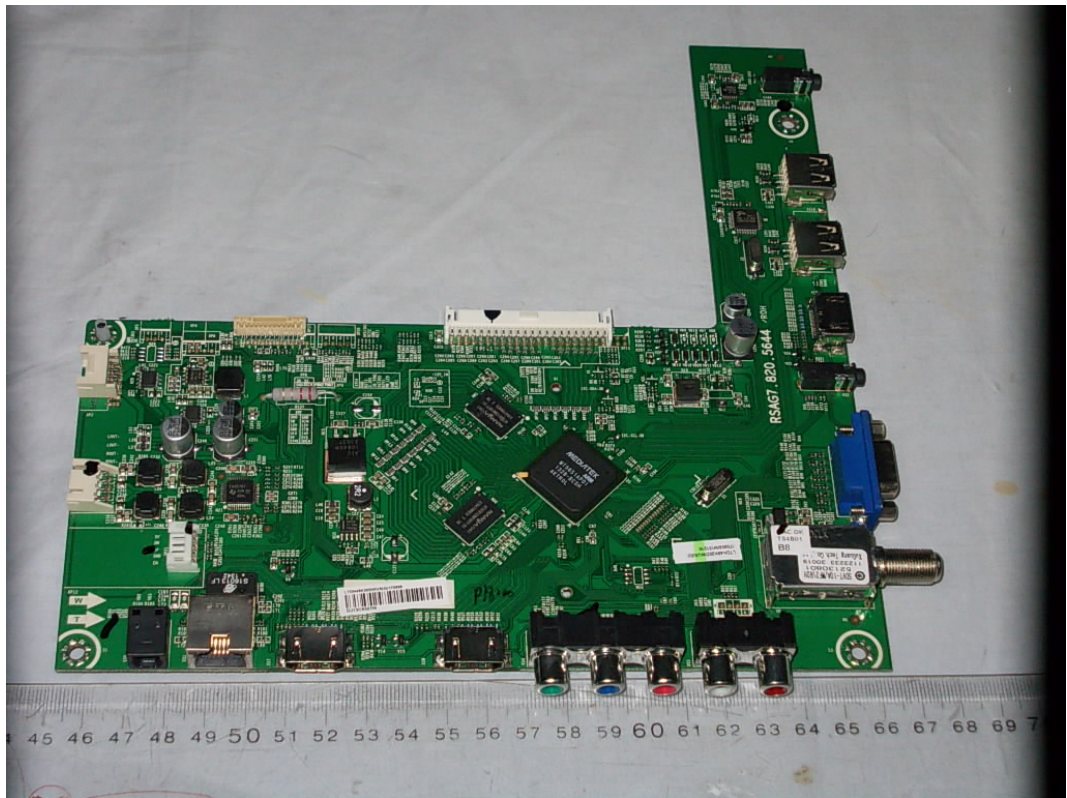


*FIGURE 4*  
*LED LCD TV (M/N: 50H5G)*  
*POWER BOARD (SOLDERED SIDE)*





*FIGURE 5  
LED LCD TV (M/N: 50H5G)  
MAIN BOARD (COMPONENT SIDE)*



*FIGURE 6  
LED LCD TV (M/N: 50H5G)  
MAIN BOARD (SOLDERED SIDE)*

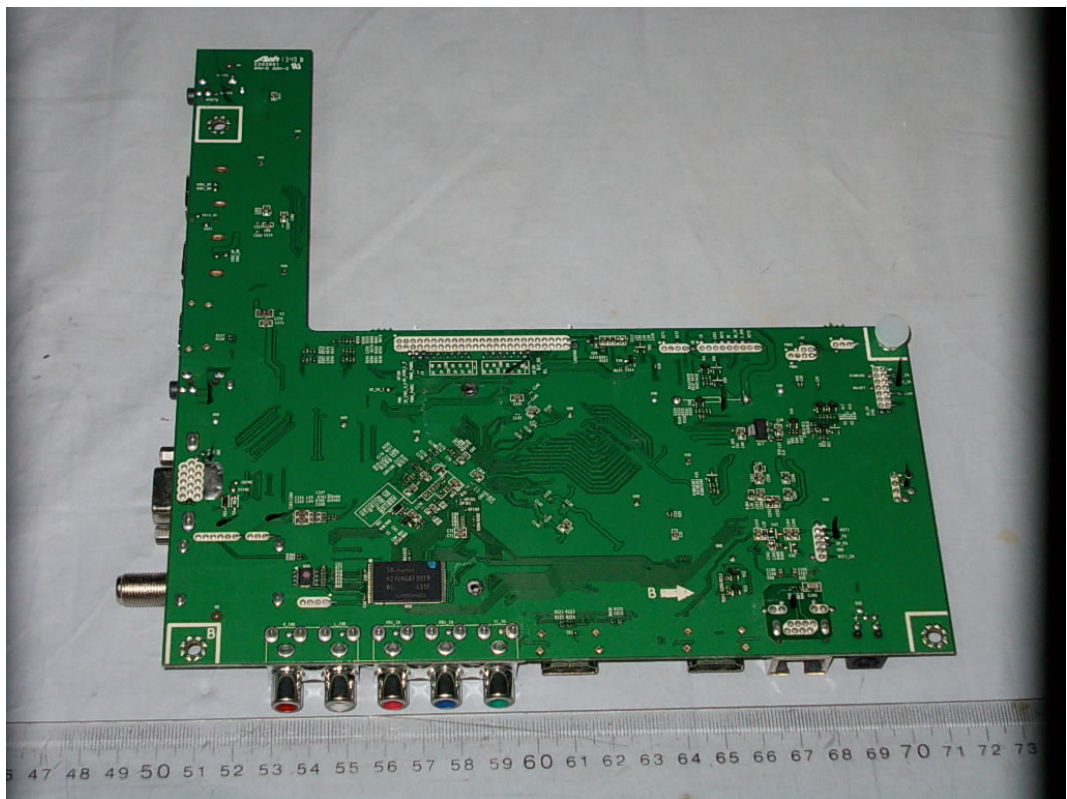




FIGURE 7  
LED LCD TV (M/N: 50H5G)  
CRYSTAL #1 ON MAIN BOARD

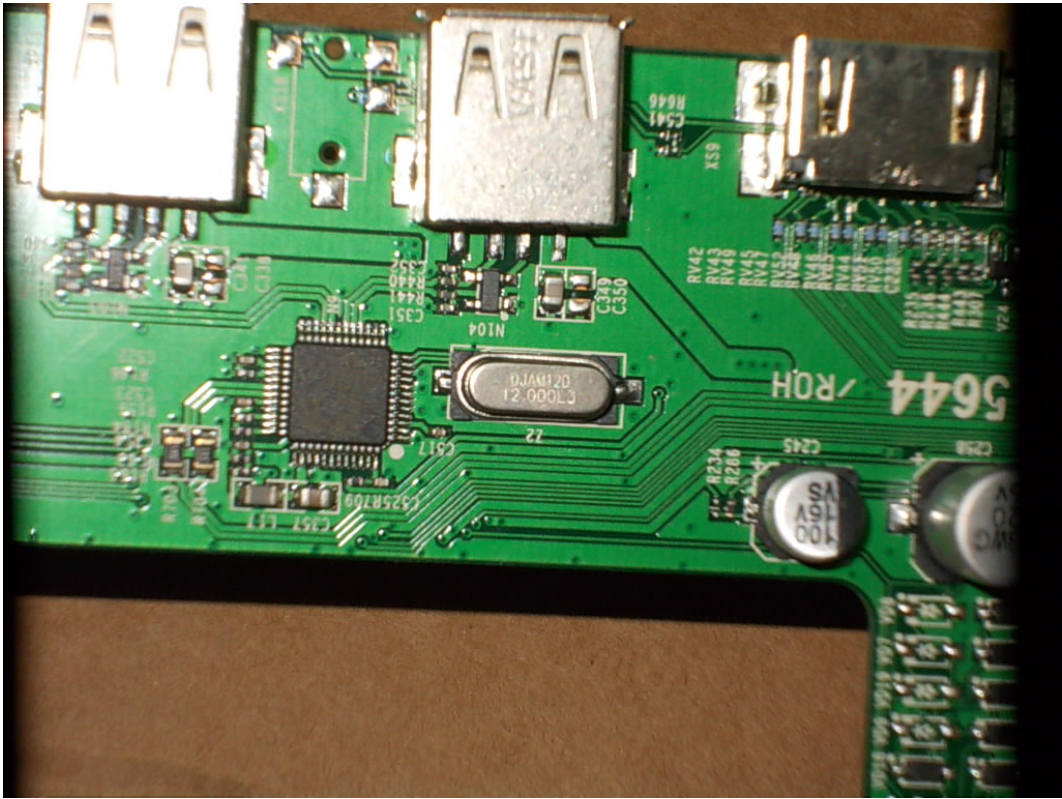


FIGURE 8  
LED LCD TV (M/N: 50H5G)  
CHIP #1 & CRYSTAL #2 ON MAIN BOARD

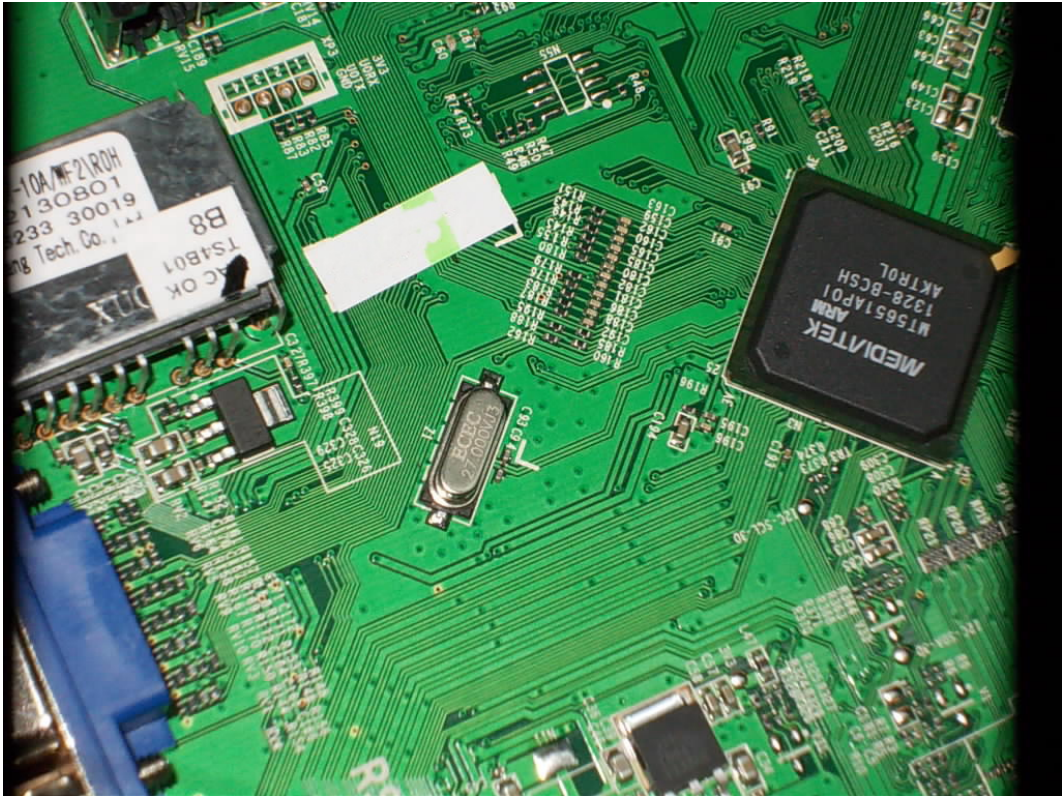




FIGURE 9  
LED LCD TV (M/N: 50H5G)  
TUNER ON MAIN BOARD

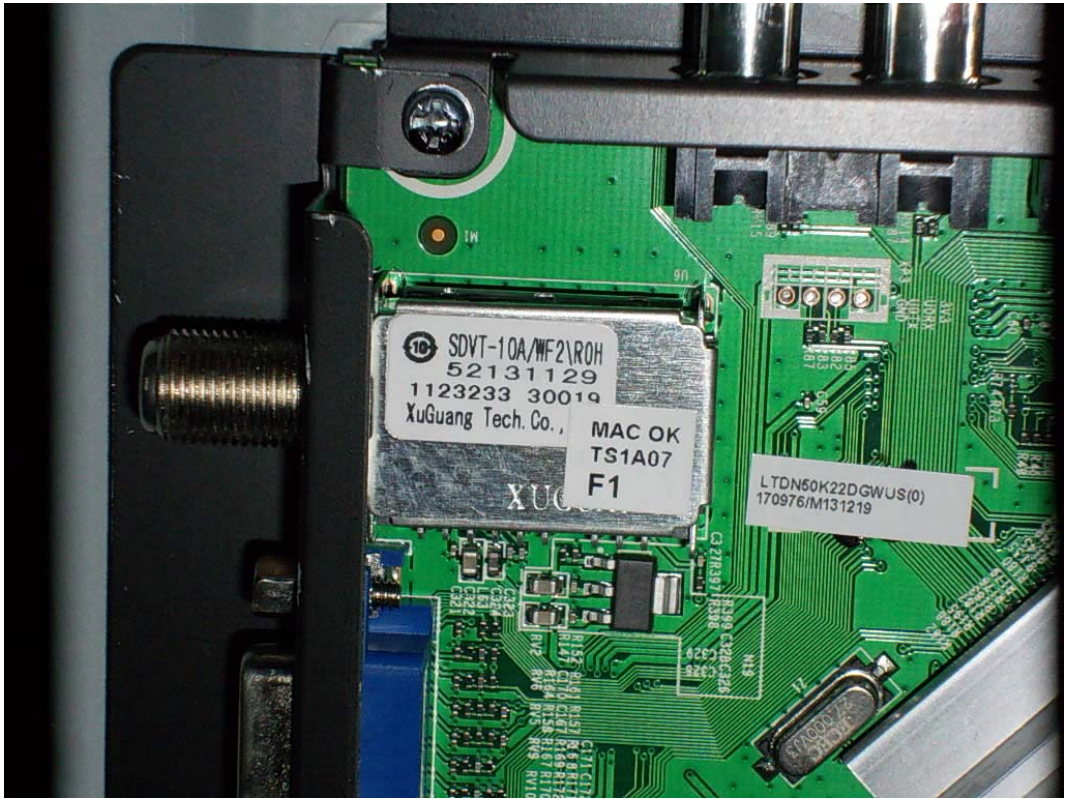


FIGURE 10  
LED LCD TV (M/N: 50H5G)  
IR BOARD

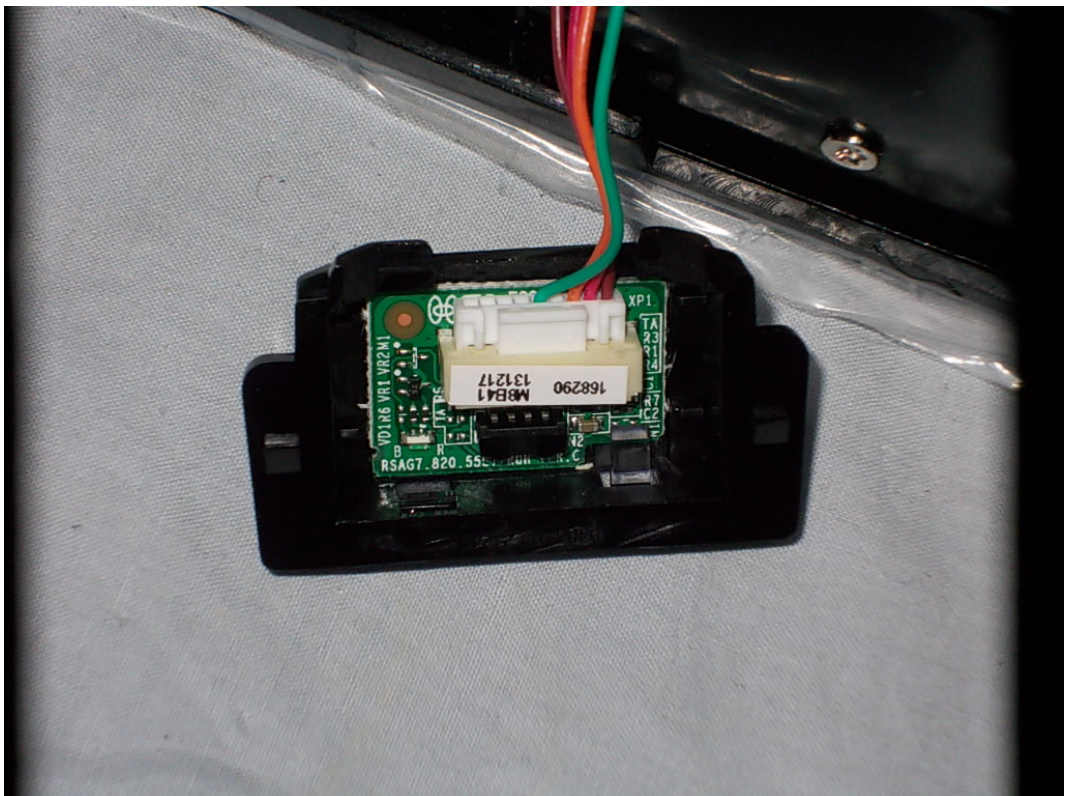




FIGURE 4 11  
LED LCD TV (M/N: 50H5G)  
KEY BOARD (COMPONENT SIDE)

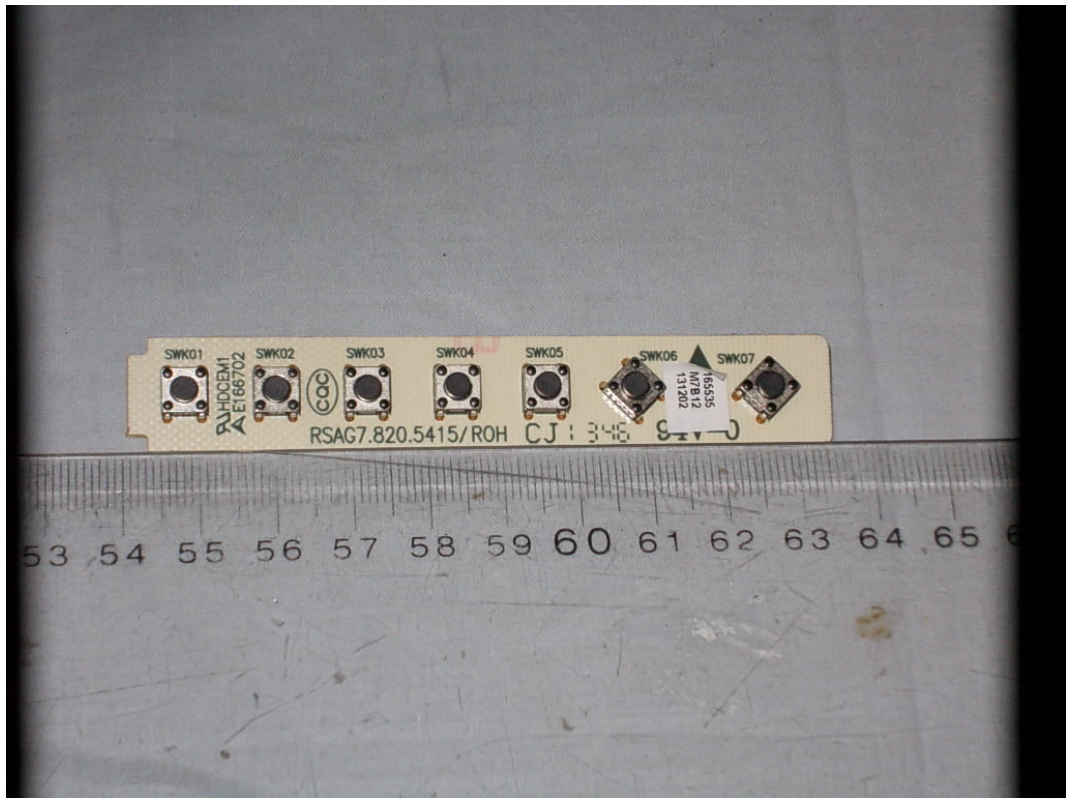


FIGURE 12  
LED LCD TV (M/N: 50H5G)  
KEY BOARD (SORANLDERED SIDE)

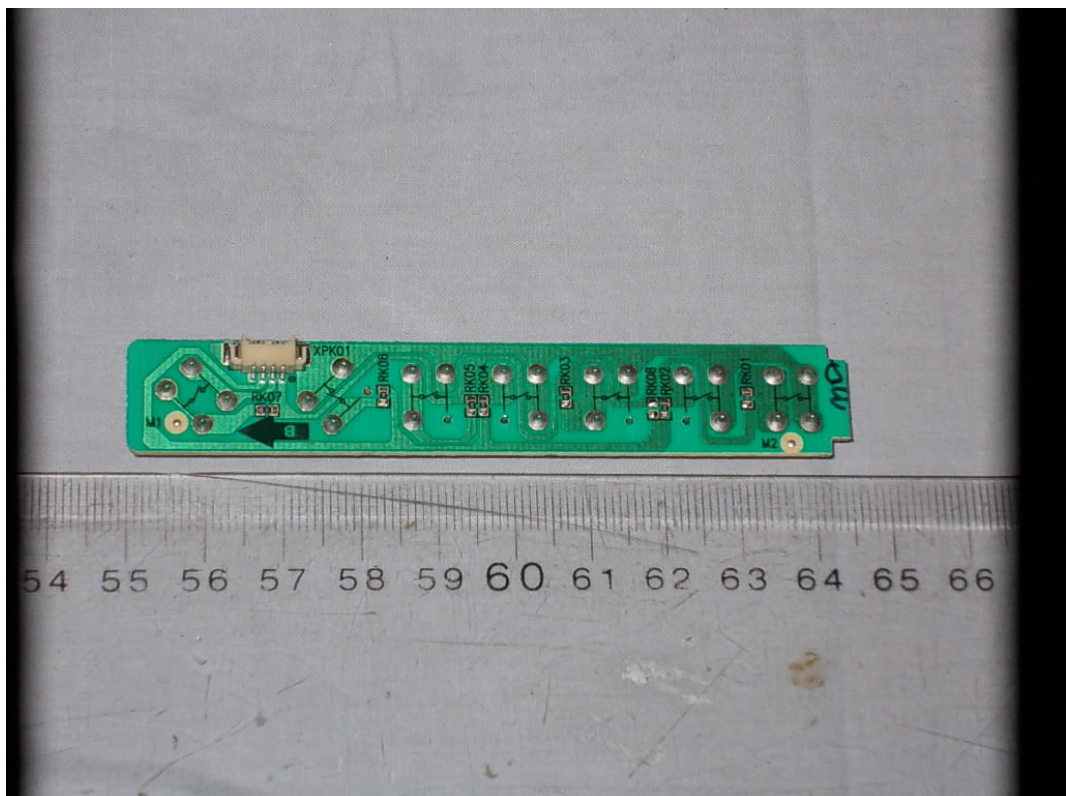




FIGURE 13  
LED LCD TV (M/N: 50H5G)  
LCD PANEL CONTROL BOARD (COMPONENT SIDE)



FIGURE 14  
LED LCD TV (M/N: 50H5G)  
LCD PANEL CONTROL BOARD (SOLDERED SIDE)

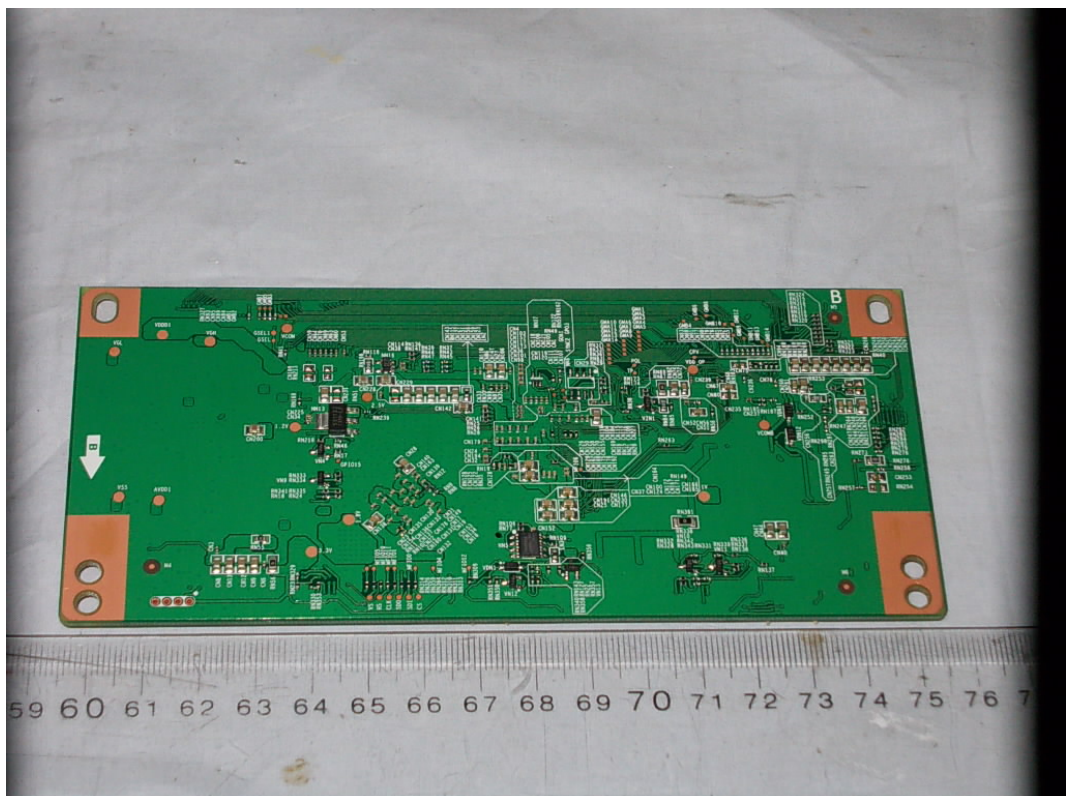


FIGURE 15  
LED LCD TV (M/N: 50H5G)  
CHIP & CRYSTAL ON LCD PANEL CONTROL BOARD

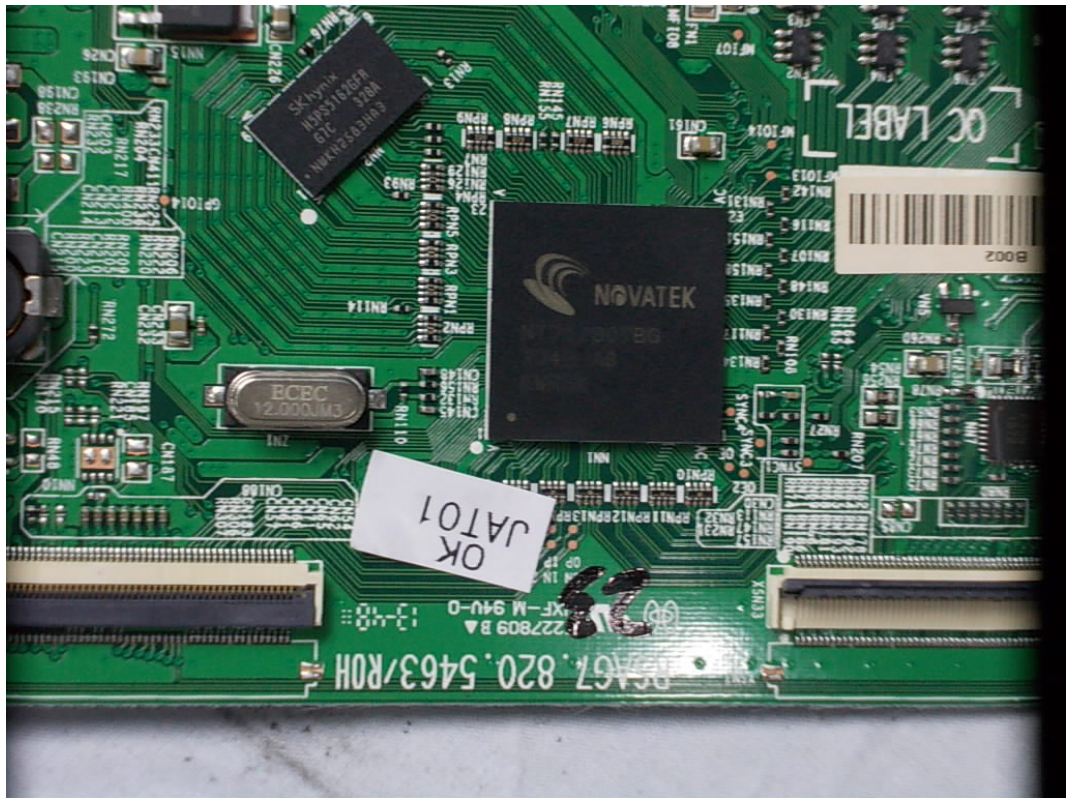
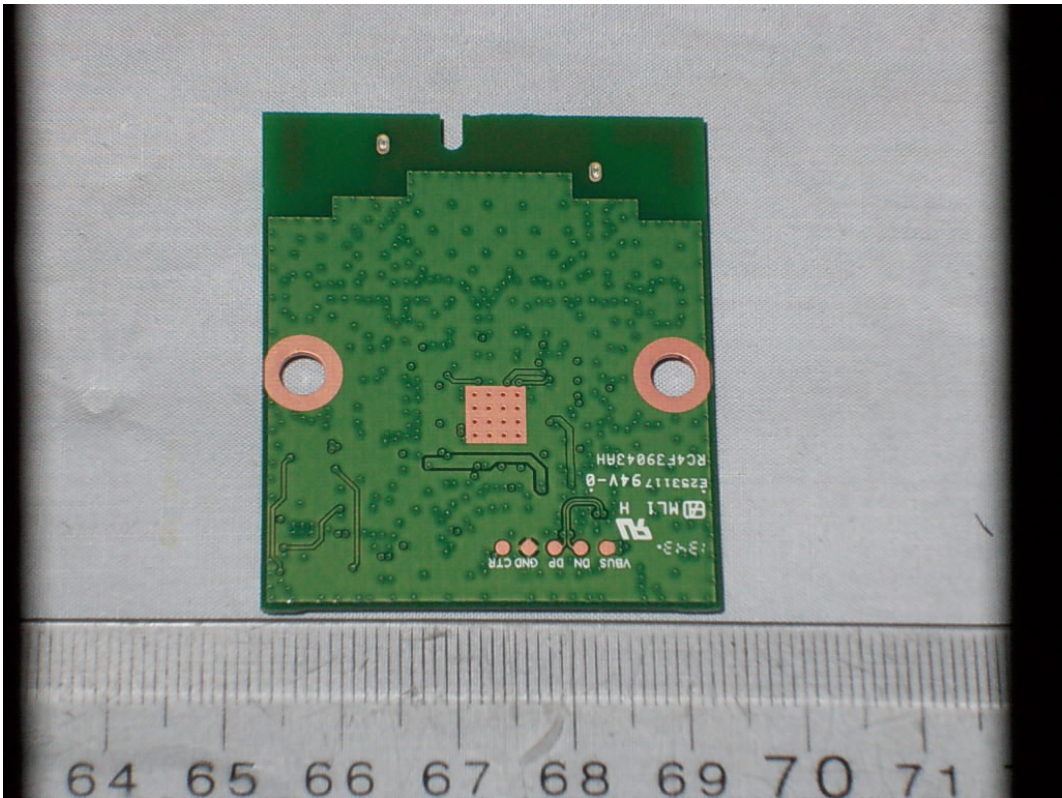




FIGURE 16  
LED LCD TV (M/N: 50H5G)  
RF BOARD (COMPONENT SIDE)



FIGURE 17  
LED LCD TV (M/N: 50H5G)  
RF BOARD (SOLDERED SIDE)





*FIGURE 18*  
*LED LCD TV (M/N: 50H5G)*  
*DEBUG*

