

FIGURE 1
LED LCD TV (M/N: LTDN58XT880GWUS)
COVER REMOVED

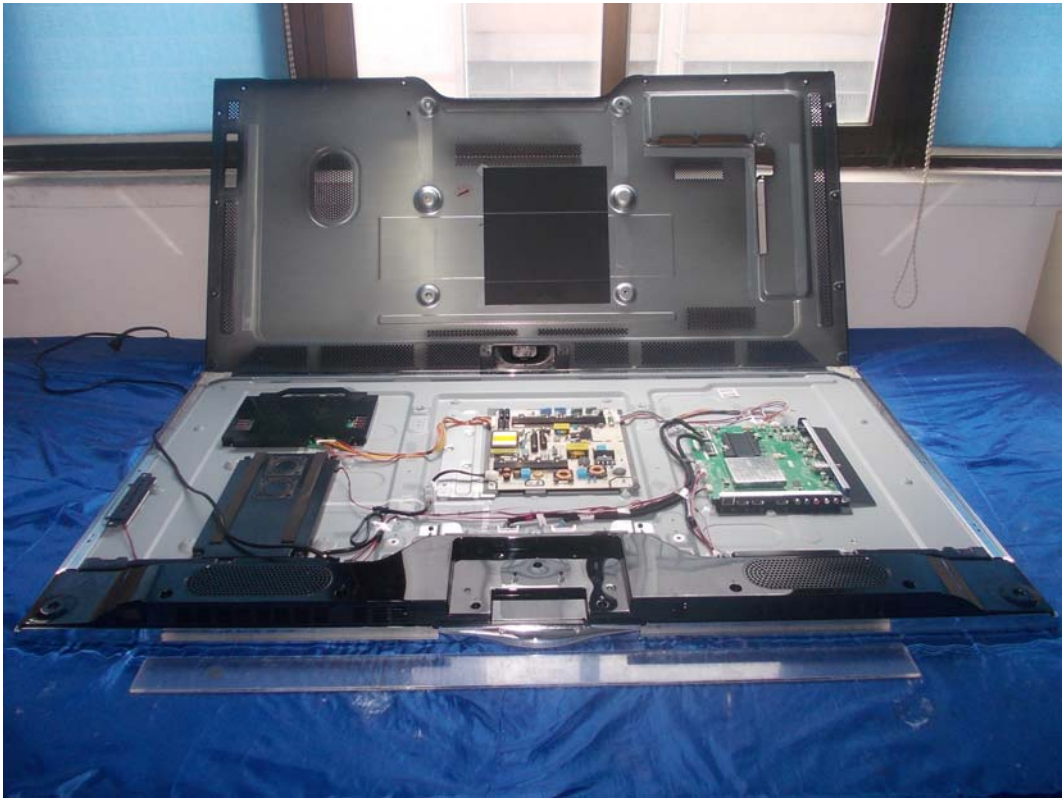


FIGURE 2
LED LCD TV (M/N: LTDN58XT880GWUS)
PANEL LABEL



FIGURE 3
LED LCD TV (M/N: LTDN58XT880GWUS)
POWER BOARD (COMPONENT SIDE)

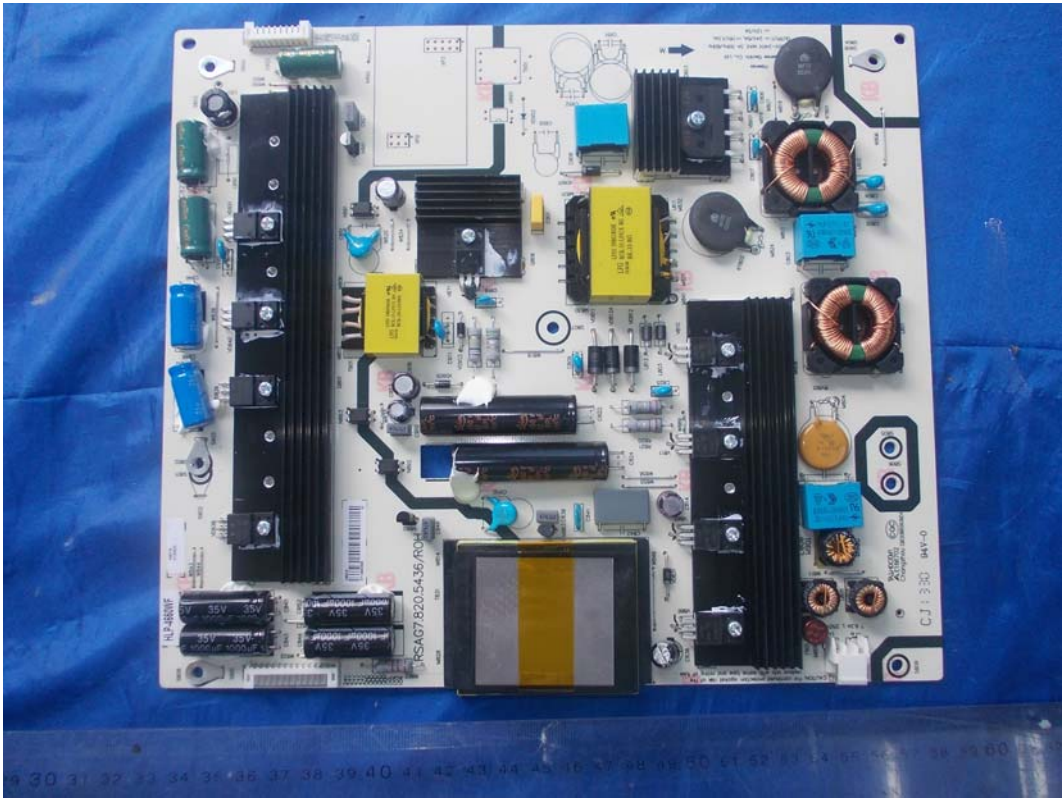


FIGURE 4
LED LCD TV (M/N: LTDN58XT880GWUS)
POWER BOARD (SOLDERED SIDE)

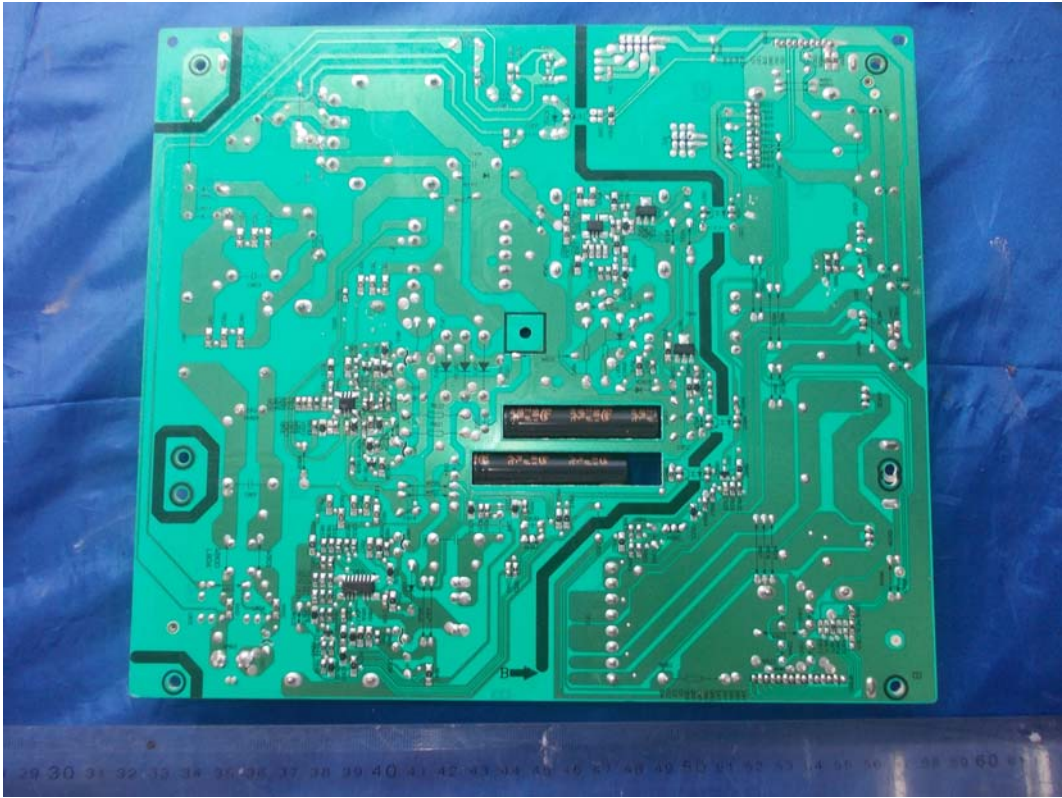


FIGURE 5
LED LCD TV (M/N: LTDN58XT880GWUS)
MAIN BOARD (COMPONENT SIDE)



FIGURE 6
LED LCD TV (M/N: LTDN58XT880GWUS)
MAIN BOARD (SOLDERED SIDE)

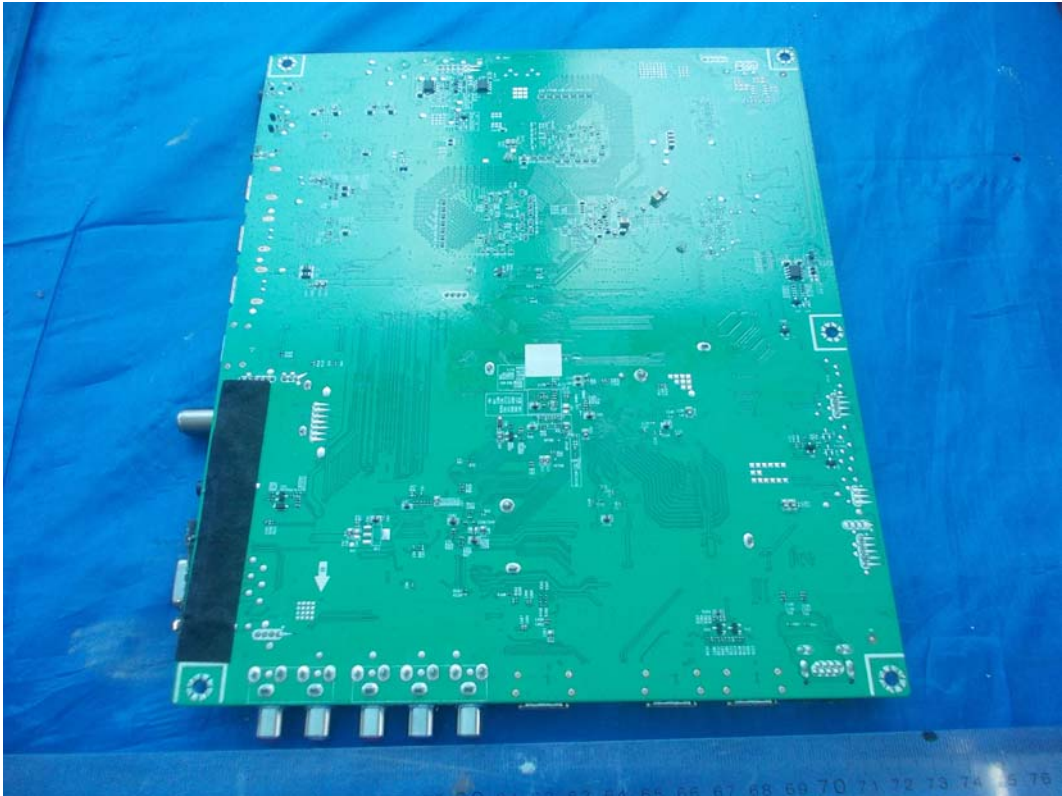


FIGURE 11
LED LCD TV (M/N: LTDN58XT880GWUS)
CRYSTAL #2 ON MAIN BOARD

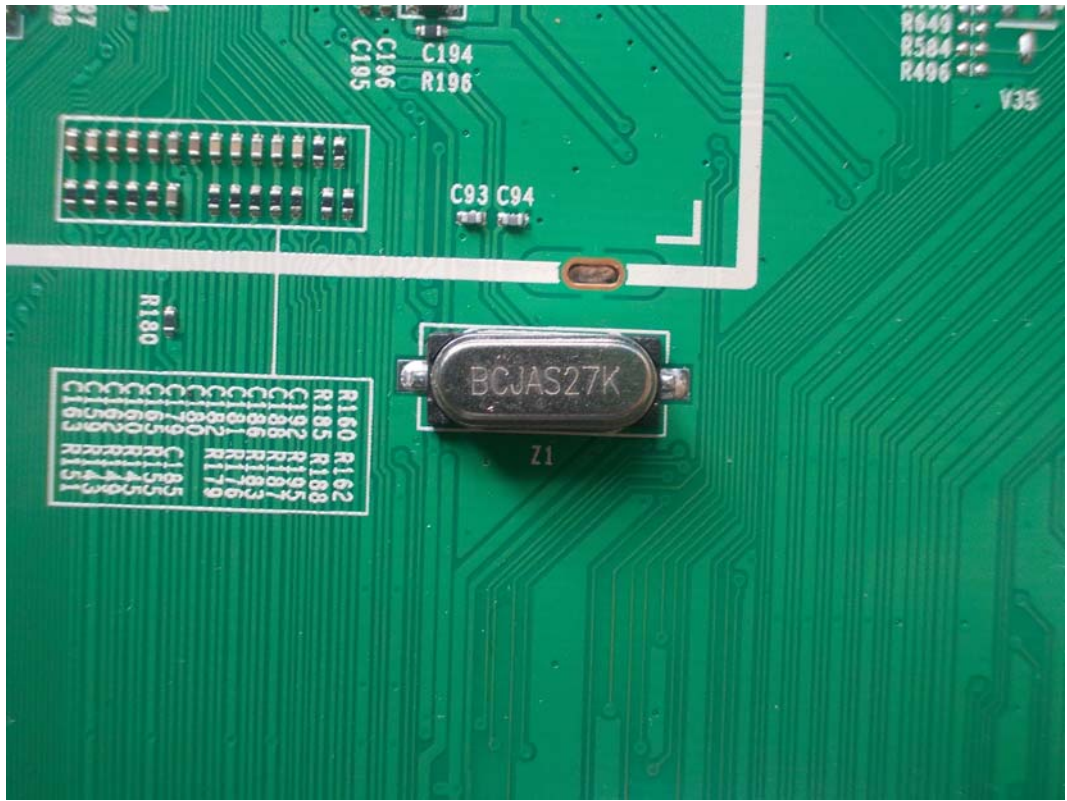


FIGURE 12
LED LCD TV (M/N: LTDN58XT880GWUS)
CRYSTAL #3 ON MAIN BOARD

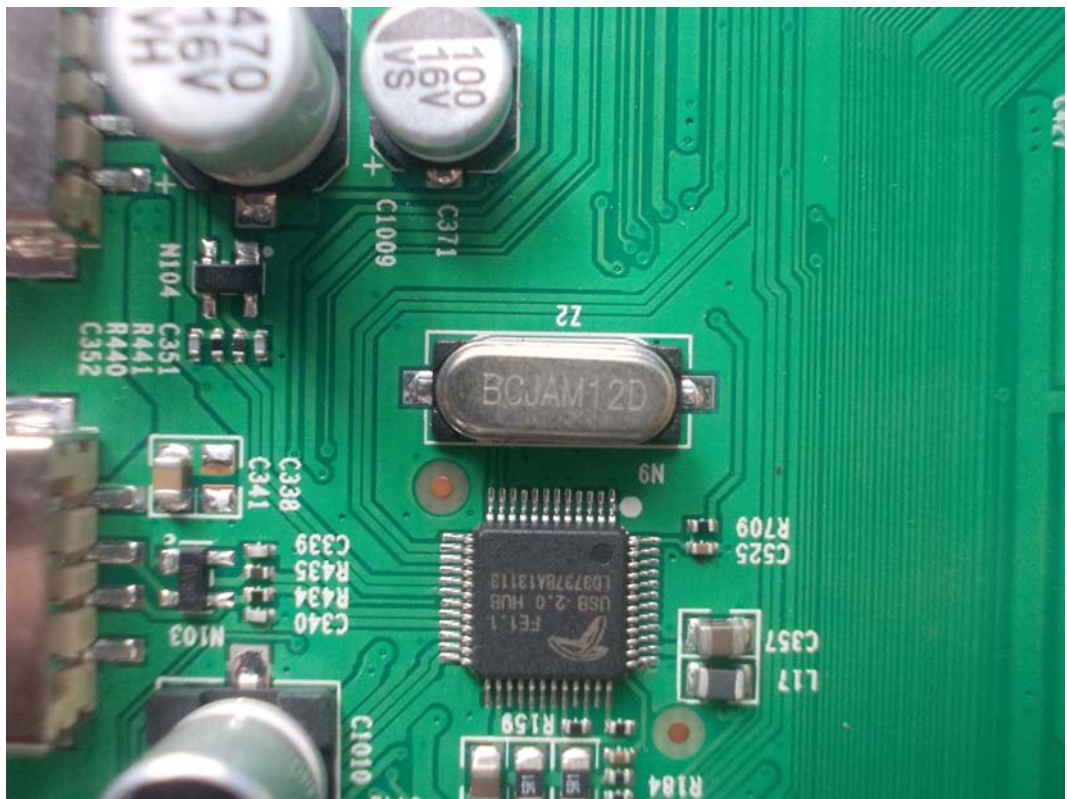


FIGURE 13
LED LCD TV (M/N: LTDN58XT880GWUS)
LCD PANEL CONTROL BOARD (COMPONENT SIDE)

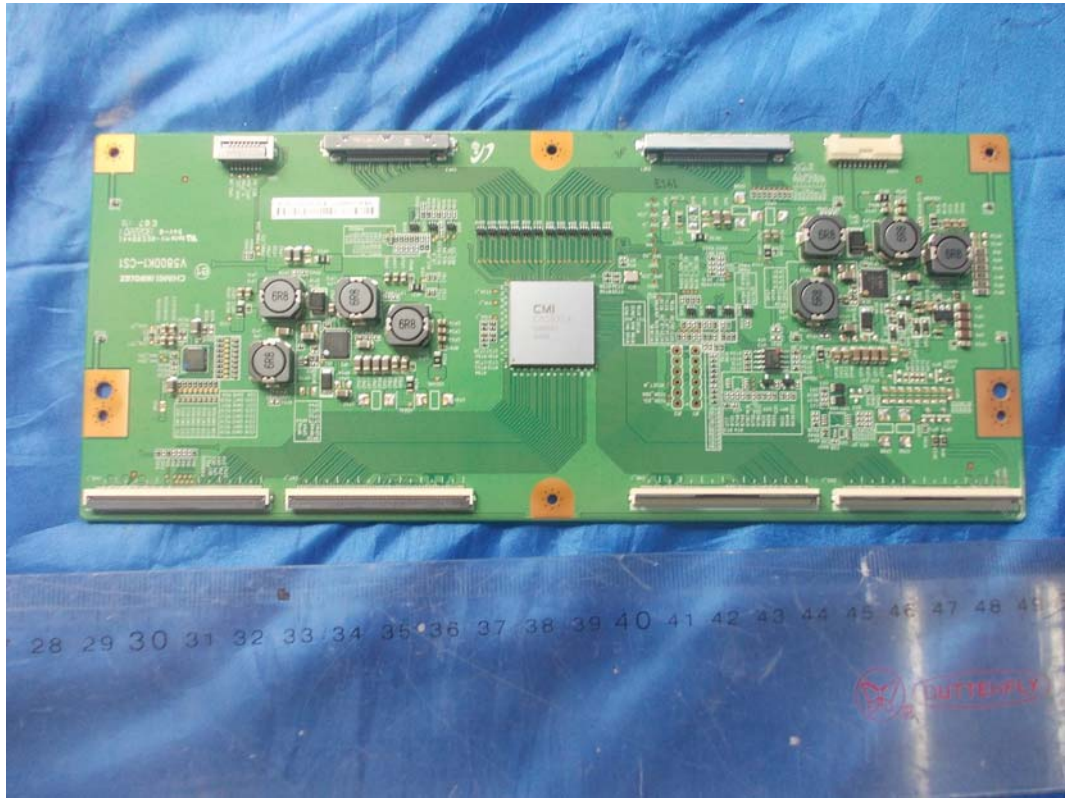


FIGURE 14
LED LCD TV (M/N: LTDN58XT880GWUS)
LCD PANEL CONTROL BOARD (SOLDERED SIDE)

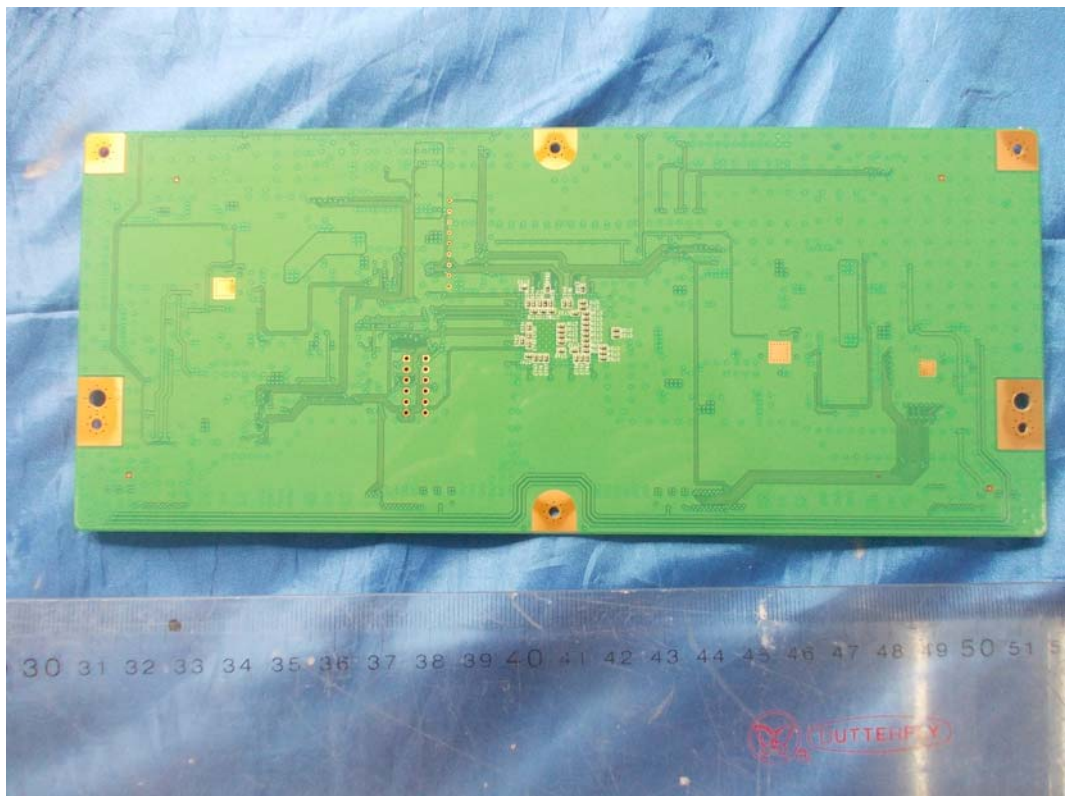


FIGURE 17
LED LCD TV (M/N: LTDN58XT880GWUS)
BOARD #1 (SOLDERED SIDE)



FIGURE 18
LED LCD TV (M/N: LTDN58XT880GWUS)
BOARD #2 (COMPONENT SIDE)

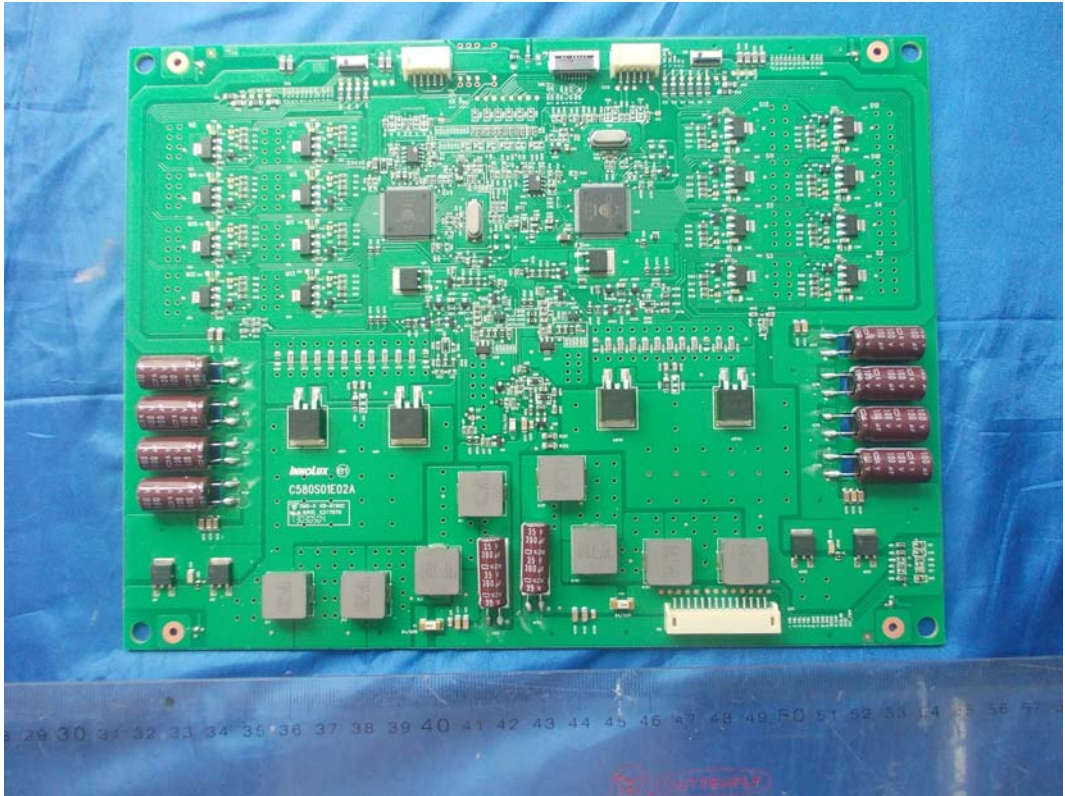


FIGURE 19
LED LCD TV (M/N: LTDN58XT880GWUS)
BOARD #2 (SOLDERED SIDE)

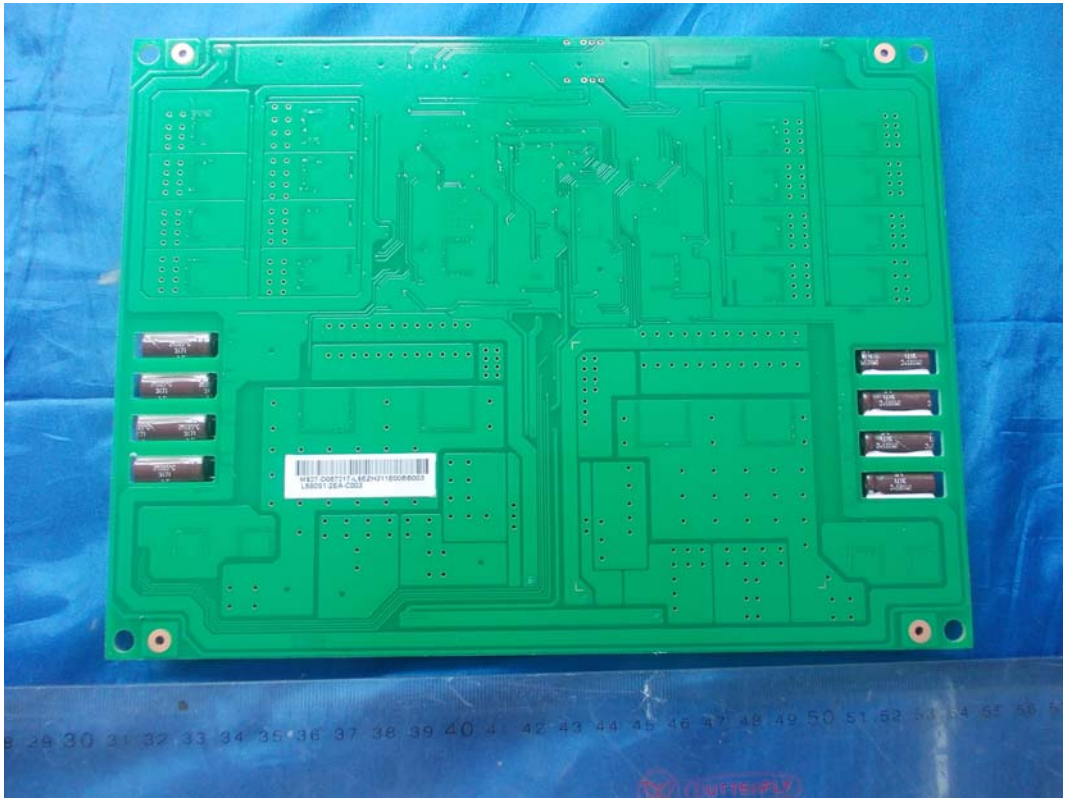


FIGURE 20
LED LCD TV (M/N: LTDN58XT880GWUS)
CHIP & CRYSTAL ON BOARD #2



FIGURE 23
LED LCD TV (M/N: LTDN58XT880GWUS)
RF BOARD (SOLDERED SIDE)

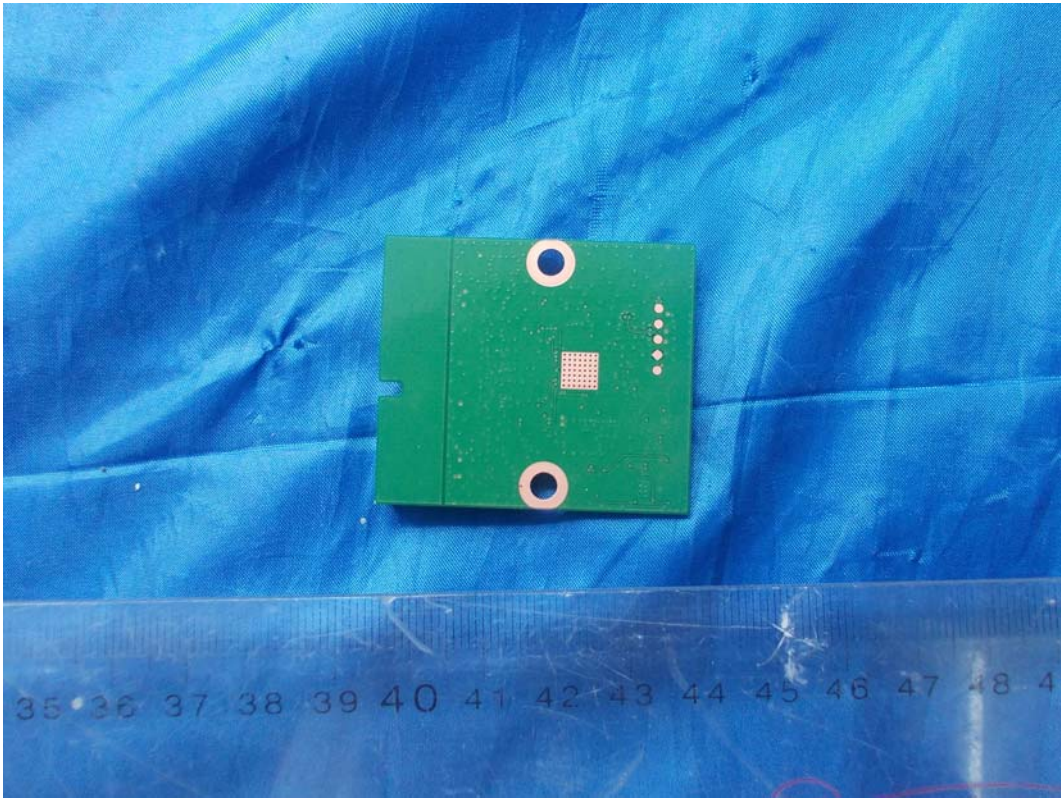


FIGURE 24
LED LCD TV (M/N: LTDN58XT880GWUS)
KEY BOARD (COMPONENT SIDE)

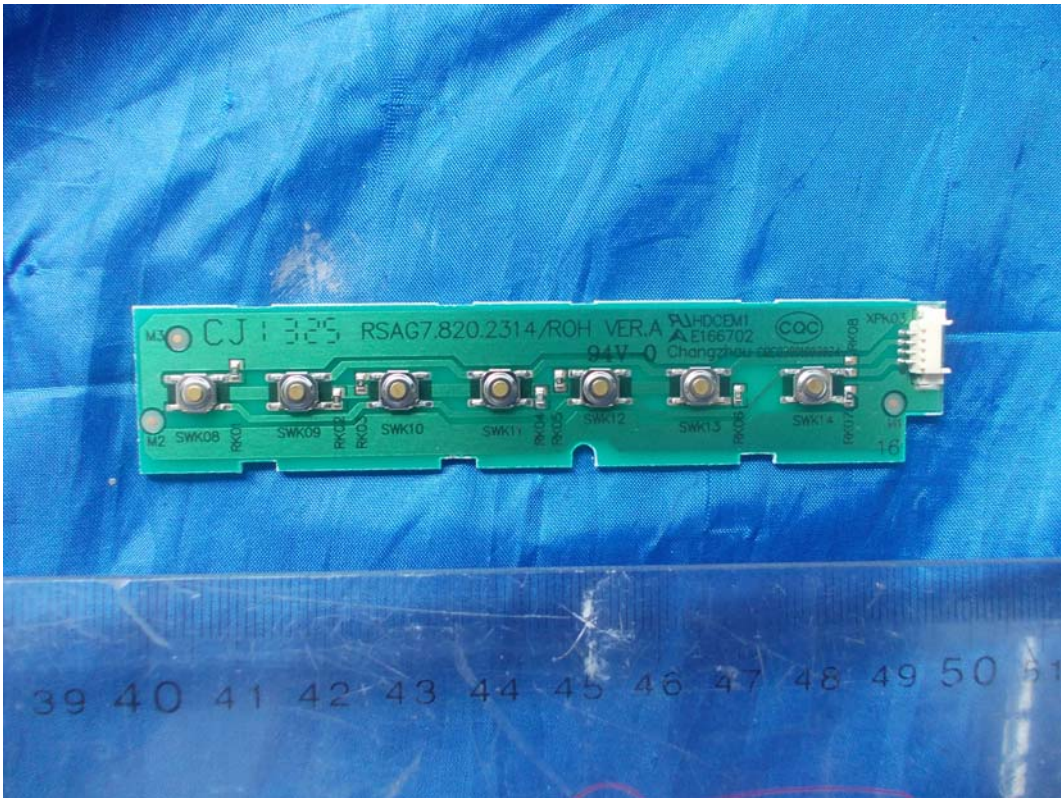


FIGURE 25
LED LCD TV (M/N: LTDN58XT880GWUS)
KEY BOARD (SOLDERED SIDE)

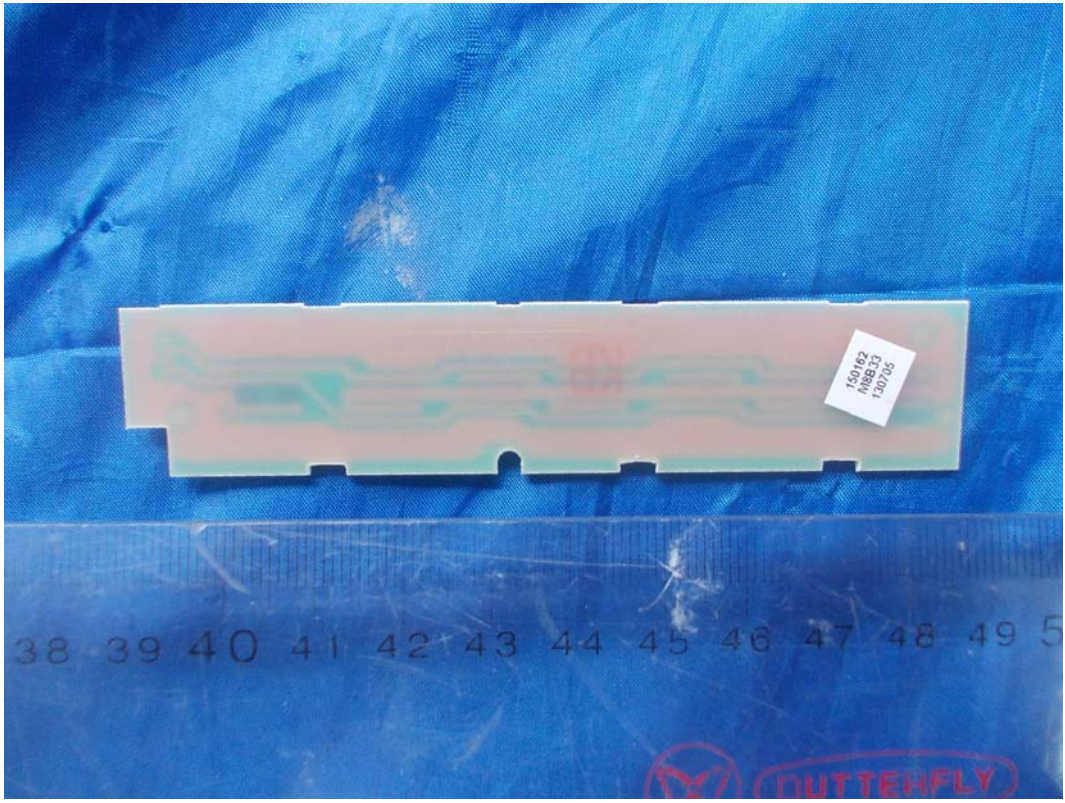


FIGURE 26
LED LCD TV (M/N: LTDN58XT880GWUS)
DEBUG #1

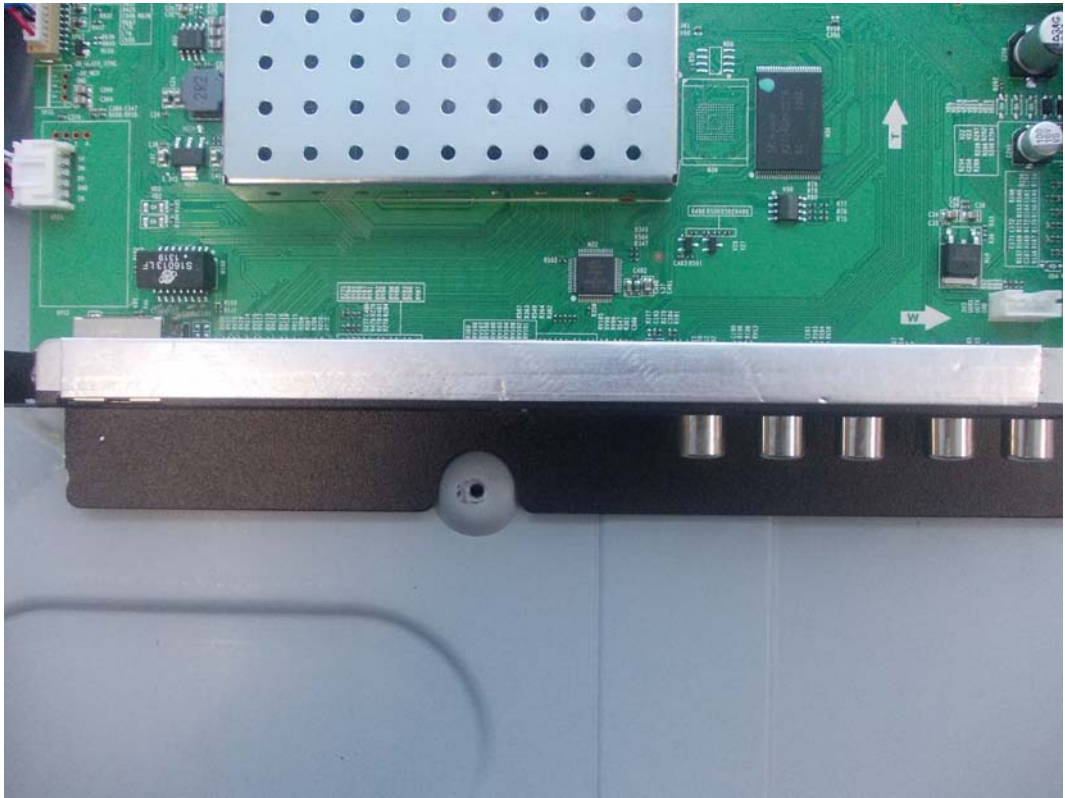


FIGURE 27
LED LCD TV (M/N: LTDN58XT880GWUS)
DEBUG #2

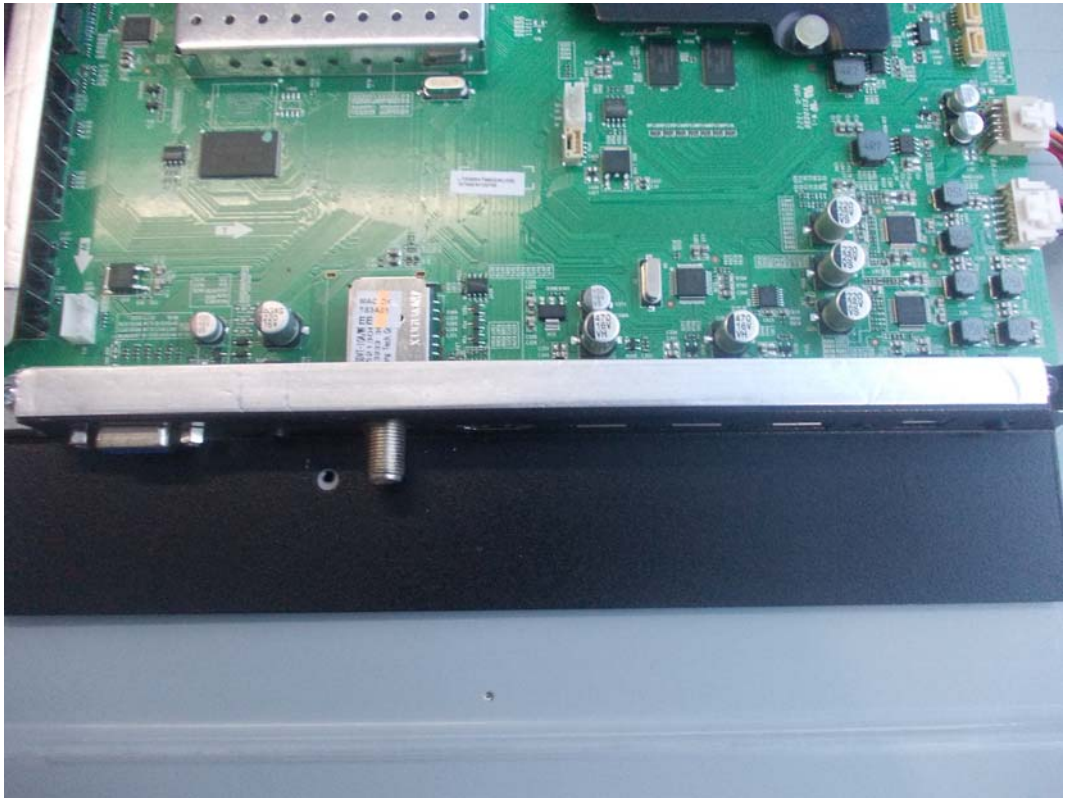


FIGURE 28
LED LCD TV (M/N: LTDN58XT880GWUS)
DEBUG #3

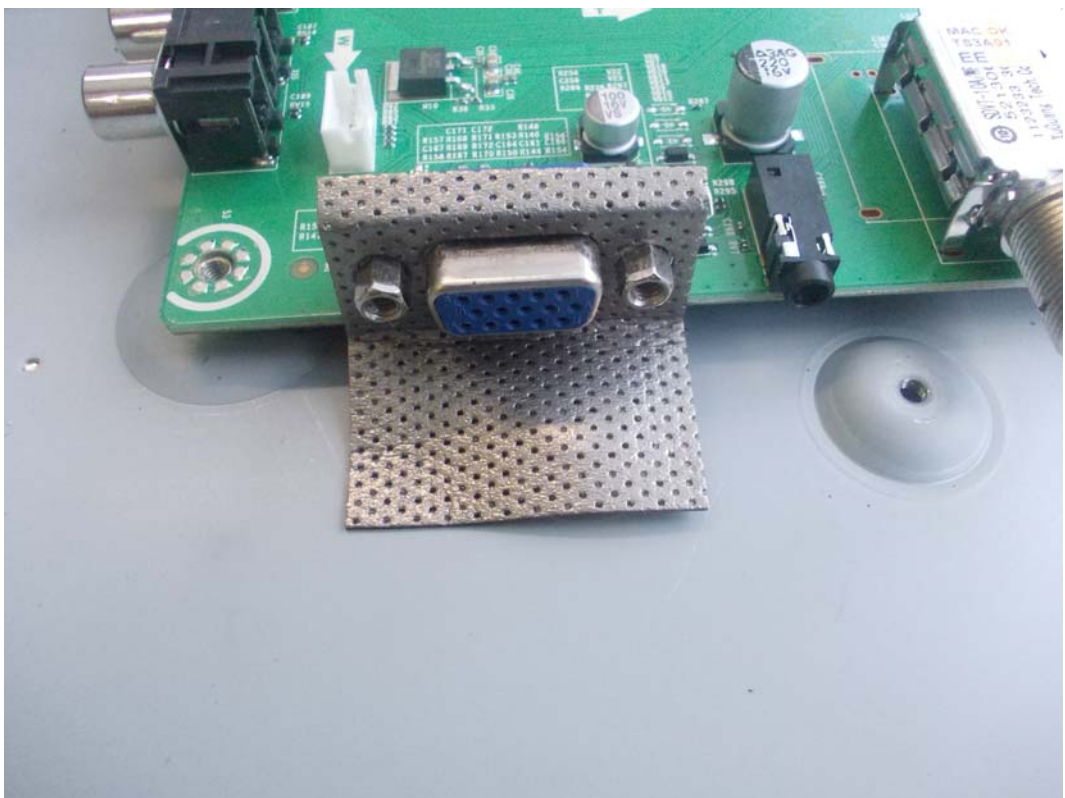


FIGURE 29
LED LCD TV (M/N: LTDN58XT880GWUS)
DEBUG #4

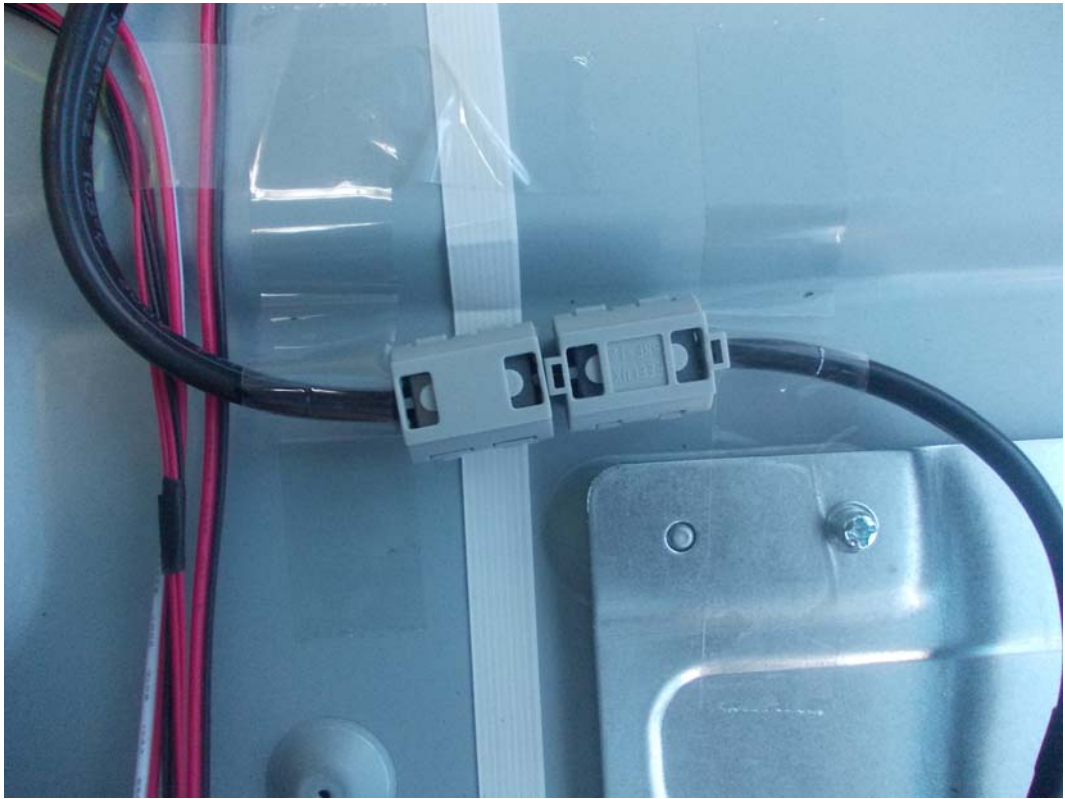


FIGURE 30
LED LCD TV (M/N: LTDN58XT880GWUS)
DEBUG #5



FIGURE 31
LED LCD TV (M/N: LTDN58XT880GWUS)
DEBUG #6

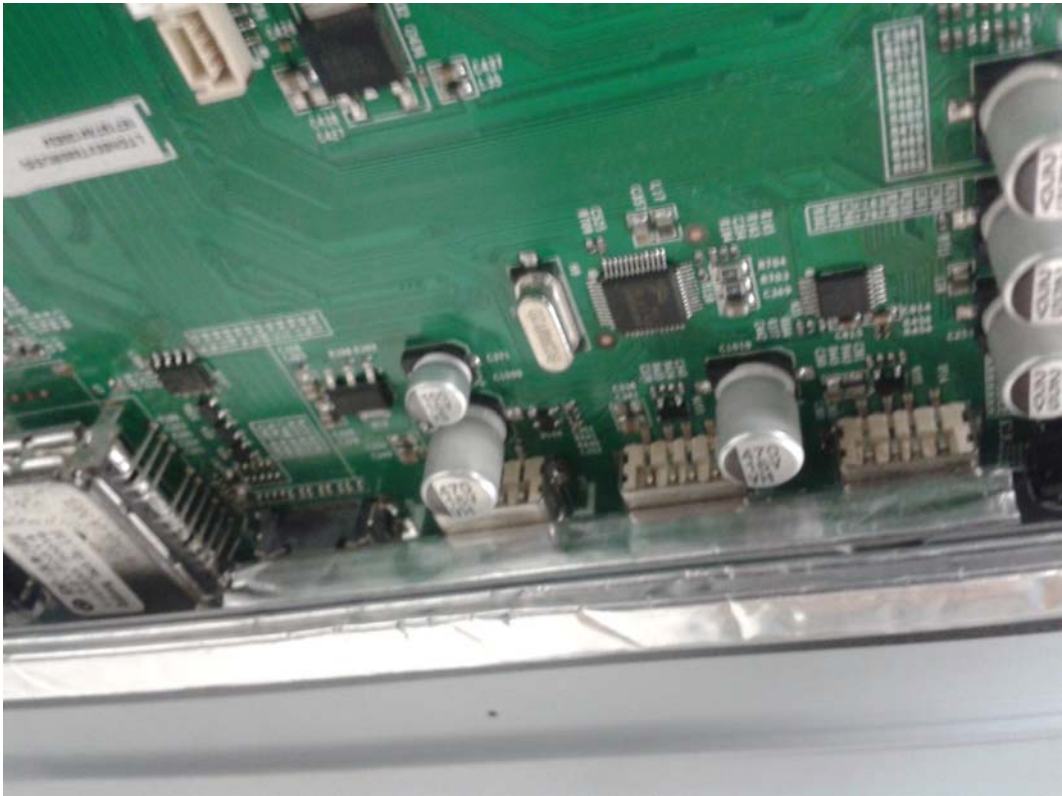


FIGURE 32
LED LCD TV (M/N: LTDN58XT880GWUS)
DEBUG #7

