

FIGURE 1
LED LCD TV (M/N: 50K20DG)
COVER REMOVED



FIGURE 2
LED LCD TV (M/N: 50K20DG)
LCD PANEL LABEL



FIGURE 3
LED LCD TV (M/N: 50K20DG)
POWER BOARD (COMPONENT SIDE)



FIGURE 4
LED LCD TV (M/N: 50K20DG)
POWER BOARD (SOLDERED SIDE)

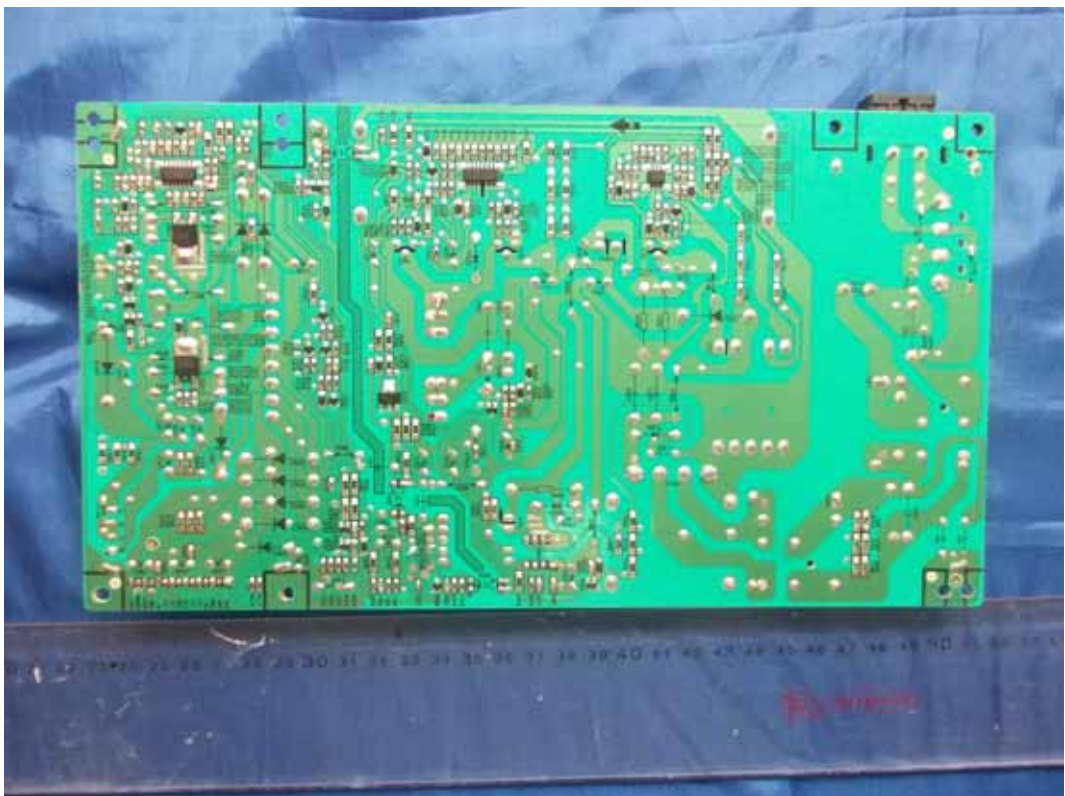


FIGURE 5
LED LCD TV (M/N: 50K20DG)
MAIN BOARD (COMPONENT SIDE)



FIGURE 6
LED LCD TV (M/N: 50K20DG)
MAIN BOARD (SOLDERED SIDE)

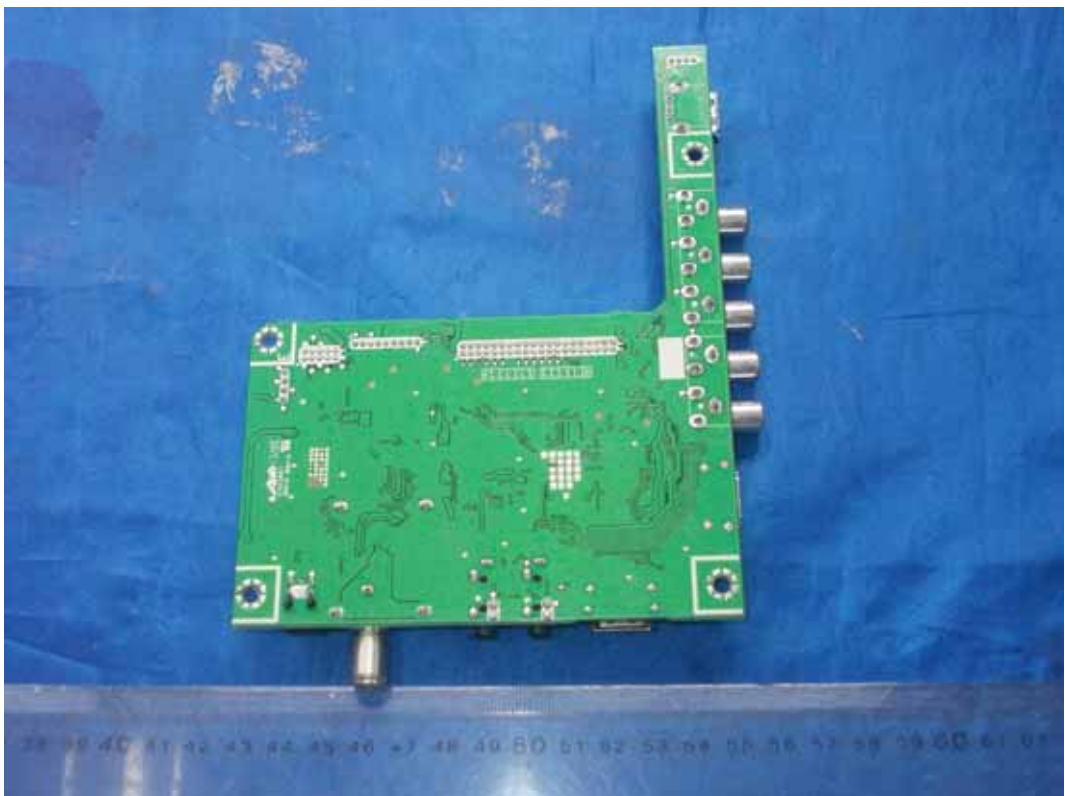


FIGURE 7
LED LCD TV (M/N: 50K20DG)
CHIP ON MAIN BOARD



FIGURE 8
LED LCD TV (M/N: 50K20DG)
CRYSTAL ON MAIN BOARD



FIGURE 9
LED LCD TV (M/N: 50K20DG)
LCD PANEL CONTROL BOARD (COMPONENT SIDE)



FIGURE 10
LED LCD TV (M/N: 50K20DG)
LCD PANEL CONTROL BOARD (SOLDERED SIDE)



FIGURE 11
LED LCD TV (M/N: 50K20DG)
CHIP & CRYSTAL ON LCD PANEL CONTROL BOARD



FIGURE 12
LED LCD TV (M/N: 50K20DG)
KEY BOARD (COMPONENT SIDE)



FIGURE 13
LED LCD TV (M/N: 50K20DG)
KEY BOARD (SOLDERED SIDE)

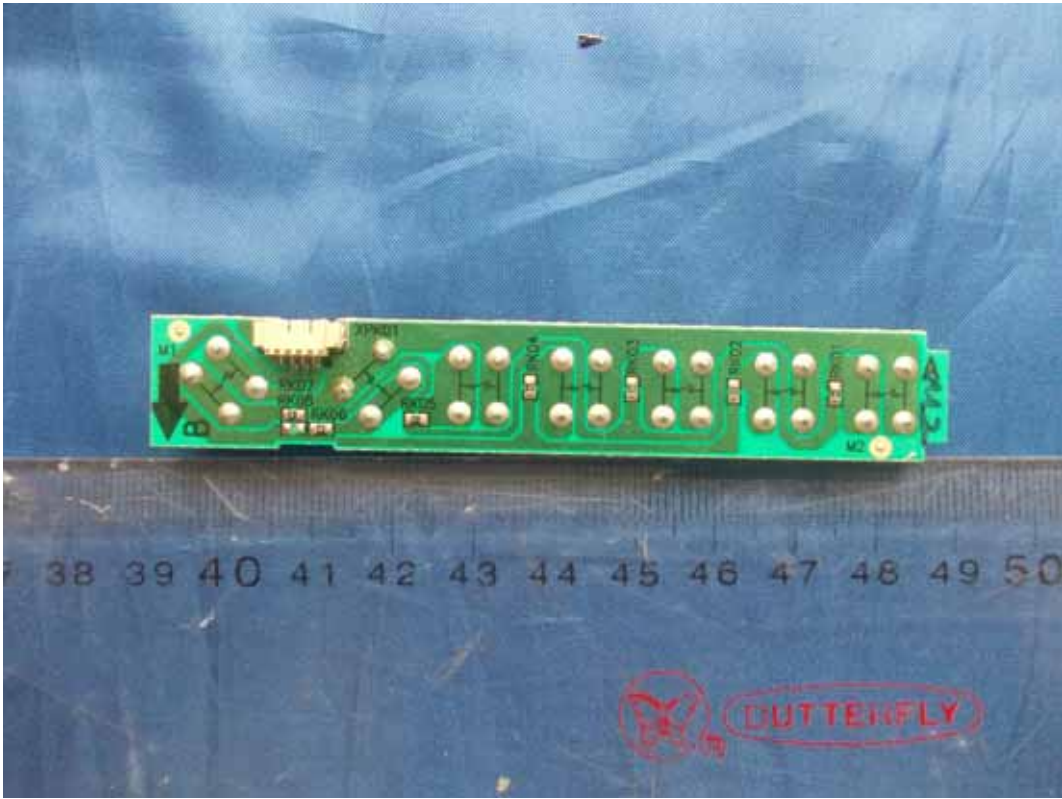


FIGURE 14
LED LCD TV (M/N: 50K20DG)
IR BOARD (COMPONENT SIDE)



FIGURE 15
LED LCD TV (M/N: 50K20DG)
IR BOARD (SOLDERED SIDE)



FIGURE 16
LED LCD TV (M/N: 50K20DG)
DEBUG

