

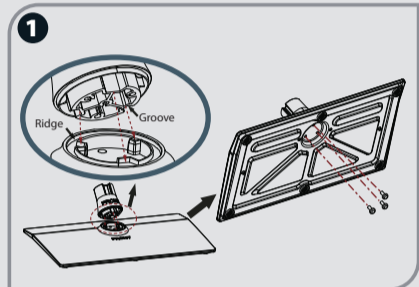
K362G Series QUICK SETUP GUIDE

1 ACCESSORIES LIST

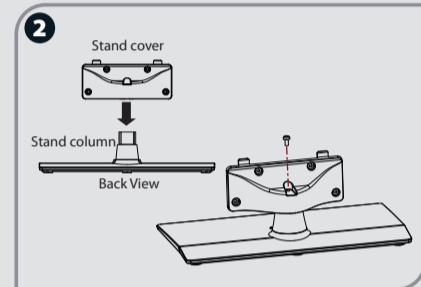
- User Manual
- Quick Setup Guide
- Remote Control
- Screw A (M5 × 12) × 8
- Screw B (M6 × 45) × 4
- Spacer × 4
- Batteries: AAA × 2

2 INSTALLING THE STAND

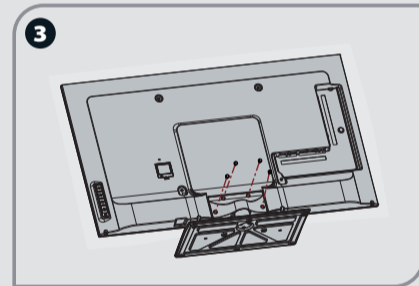
Follow the illustrations below to complete the installation steps.



Align the front of the stand column with the front of the base, then insert the stand column into the base making sure that the groove in the stand column aligns with the ridge in the base. Secure the stand column to the base with 3 Screws A (M5 x 12).



Align the stand cover with the stand column, then secure the stand cover to the stand column with 1 Screw A (M5 x 12). Make sure that the bottom of the stand cover is flush against the top of the stand column.



Secure the stand to the TV with the 4 Screws A (M5 x 12).

NOTES

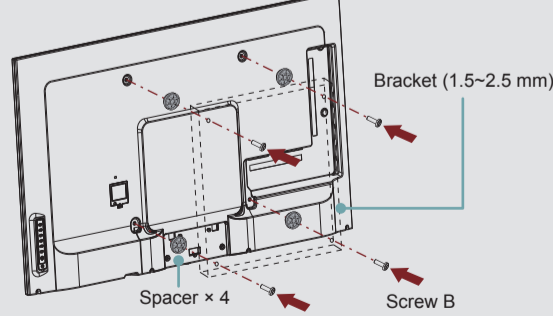
Product image is only for reference, actual product may vary in appearance. Carefully place your TV facedown on a soft, cushioned surface to prevent damage to the TV or scratching to the screen.

3 INSTALLING A WALL-MOUNT BRACKET

If you want to attach the TV to a wall-mount bracket(not provided), you should first remove the stand if it is pre-attached.

1. If you want to attach the TV to a wall-mount bracket (not provided), you should first remove the stand if it is pre-attached. Make sure the TV is laid face-down on a clean, safe, and cushioned surface.

2. Attach purchased bracket (1.5-2.5 mm thickness) on the TV with the 4 screws in the Screw B pack.



WARNING

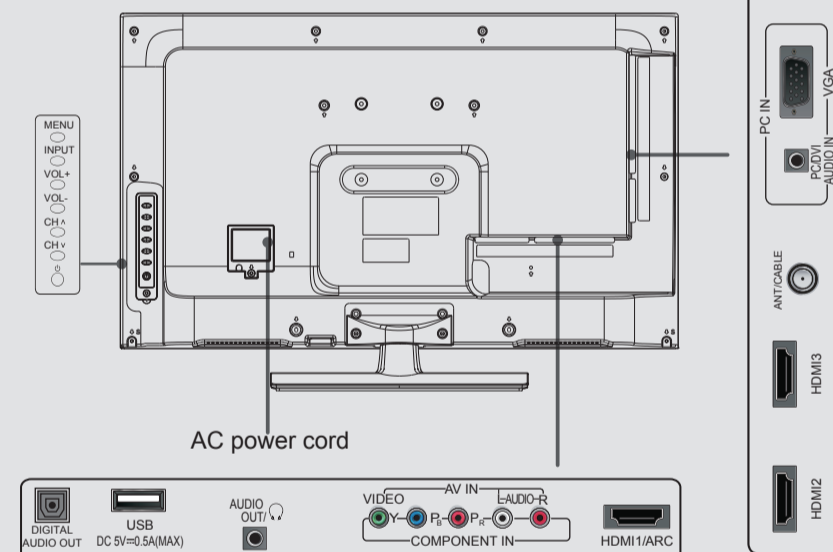
To prevent internal damage to the TV and ensure the TV is mounted securely, use only the 4 screws in the Screw B pack.

Wall-Mount hole pattern VESA (mm)	400 × 400
Wall-Mount screw size (mm)	M6

Follow instructions provided with the Wall-Mount bracket.

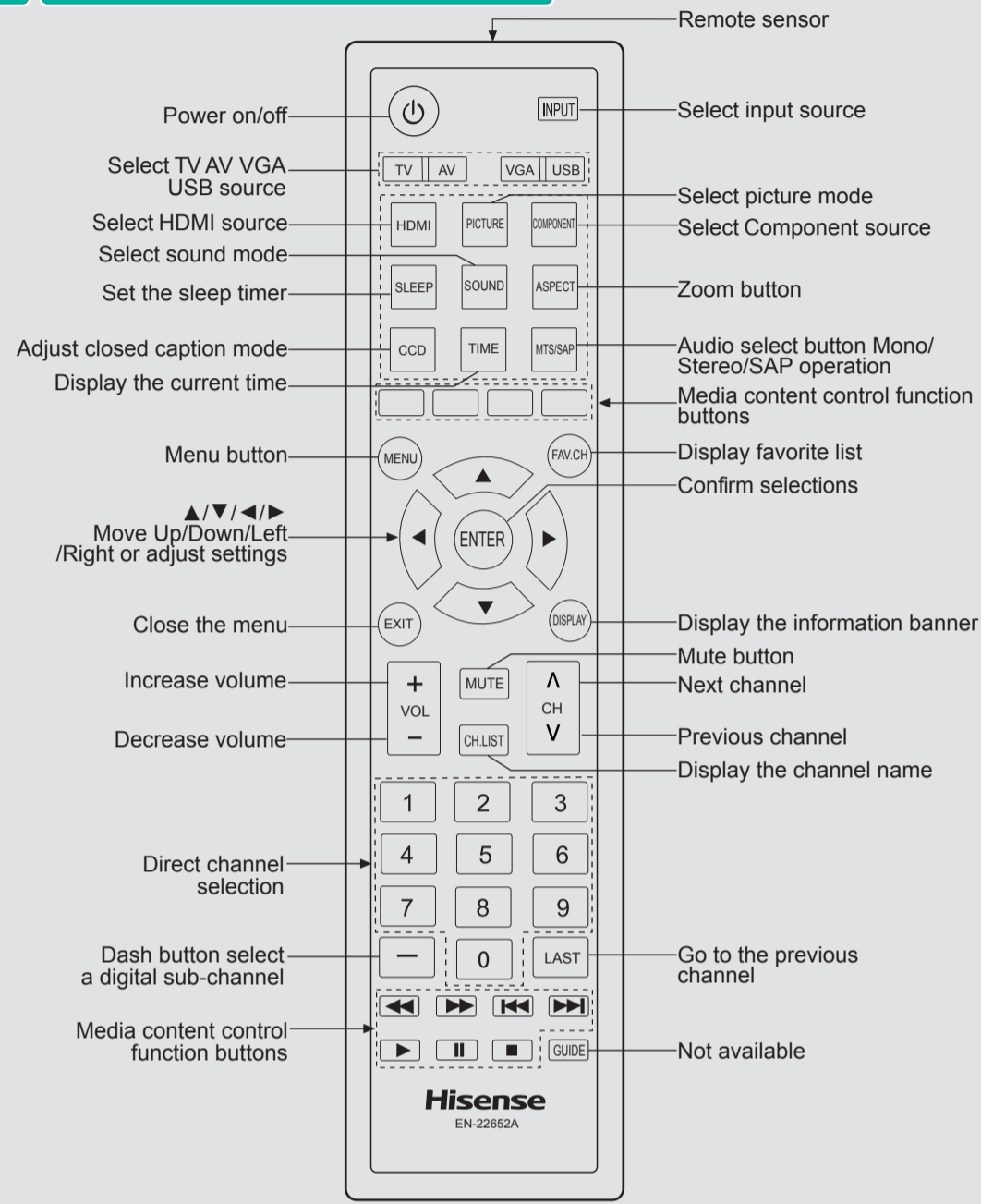
- If you are not sure of your ability to do complete the installation, contact a professional installer or service technician for assistance. The manufacturer is not responsible for any damages or injuries that occur due to mishandling or incorrect assembly.
- Be sure to use the provider spacers between the TV and the bracket when attaching the mount.

4 BUTTONS AND CONNECTORS



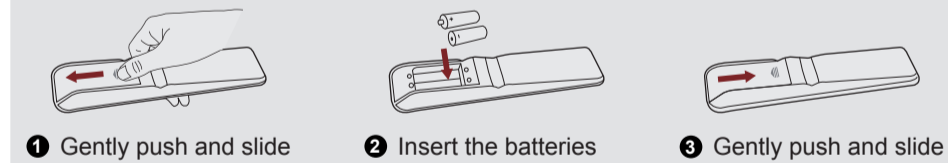
Item	Description
MENU	Display the on-screen menu to setup your TV's features.
INPUT	Select the different input signal sources.
VOL+/-	Adjust the volume.
CH ▲ / ▼	Select the channel.
(Power button)	Turn on the TV or put the TV in standby mode. Caution: The TV continues to receive power even in standby mode. Unplug the power cord to disconnect power.
ANT/CABLE	Connect an antenna or cable TV to this jack.
HDMI	HDMI (High-Definition Multimedia Interface) provides an uncompressed, all digital audio/video interface between this TV and any HDMI-device, such as a set-top box, Blu-ray disc player, or AV receiver.
COMPONENT IN	Connect to a DVD player, Digital Set-Top-Box, or other A/V devices with component (YPbPr) video and audio output jacks.
AV IN	Connect to the composite video and audio (L/R) output jacks on external video devices.
VGA PC/DVI AUDIO IN	Connect to a PC or other devices with a VGA or DVI interface.
○/□/△/◇/AUDIO OUT	Connect headphone or analog sound system using RCA Y-cable (1/8"-stereo mini to L/R phono-not provided).
DIGITAL AUDIO OUT	Connect an audio amplifier to this jack.
USB	Port for Digital Media Player and for software update.

5 REMOTE CONTROL



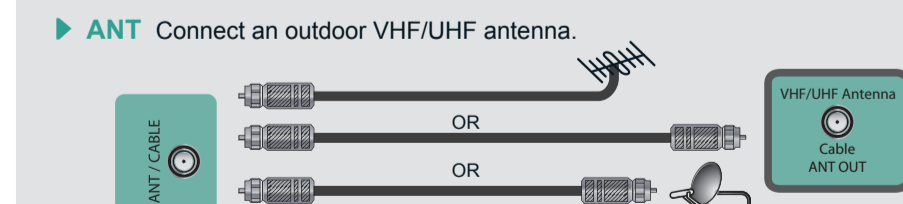
CHANGE THE BATTERIES

1. Slide the back cover to open the battery compartment of the remote control.
2. Insert two AAA size batteries. Make sure to match the (+) and (-) ends of the batteries with the (+) and (-) ends indicated in the battery compartment.
3. Close the battery compartment cover.

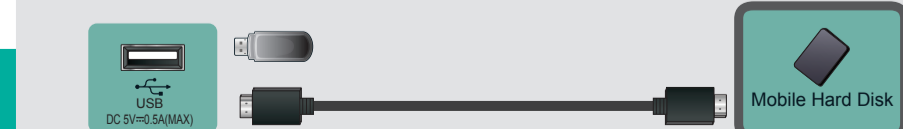


6 TV CONNECTORS

Check the jacks for position and type before making any connections. Loose connections can result in image or color problems. Make sure that all connections are tight and secure.

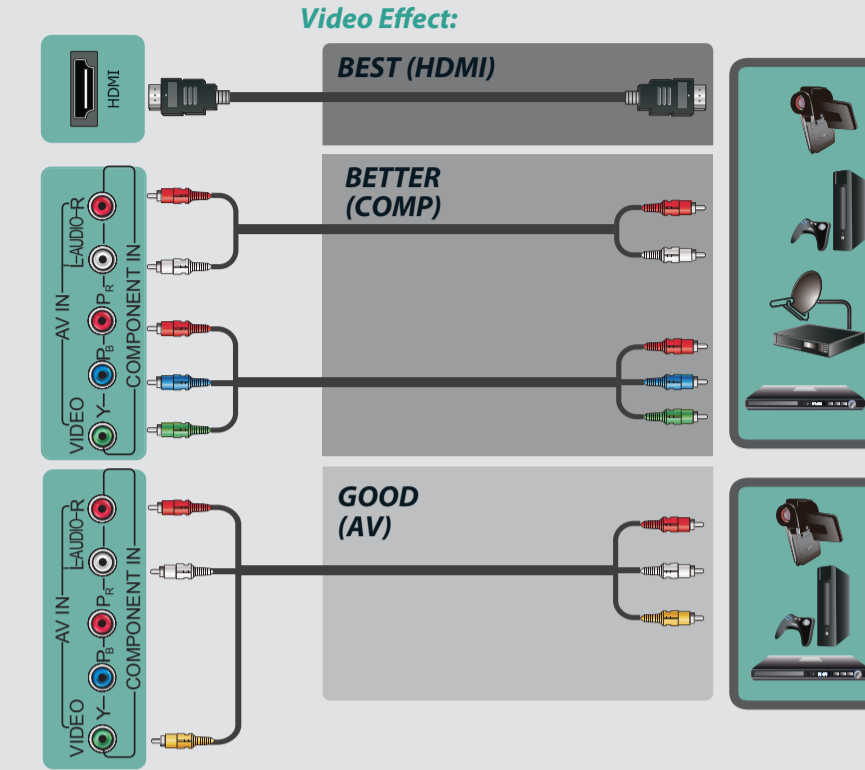


- ▶ **ANT** Connect an outdoor VHF/UHF antenna.



- ▶ **USB** Connect a USB device for browsing photos, music and movies.

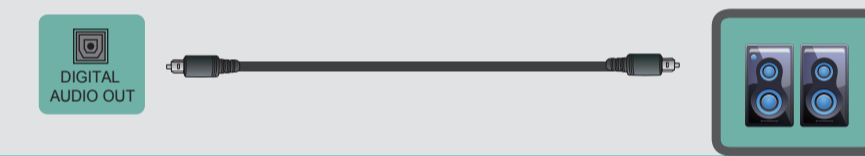
- ▶ **HDMI / COMP / AV** Connect an HDMI cable or Comp/AV Adapter from an external AV equipment.



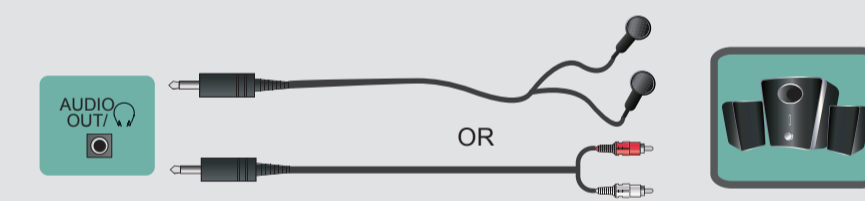
- ▶ **VGA & VGA AUDIO** Connect a VGA cable and an audio cable from the PC.



- ▶ **DIGITAL AUDIO OUT** Connect an optical cable from an external digital audio system.



- ▶ **HEADPHONE** Connect Headphone for audio out of the TV.



7 SPECIFICATIONS

Model Name	50K362G	55K362G
Dimension	Without Stand	Width: 44.3 inches (1124 mm) Height: 26.2 inches (666 mm) Depth: 2.5 inches (64 mm)
	With Stand	Width: 44.3 inches (1124 mm) Height: 28.7 inches (729 mm) Depth: 11.1 inches (281 mm)
Weight	Without Stand	39.7 lbs (18 kg)
	With Stand	46.3 lbs (21 kg)
LCD Panel Minimum size (diagonal)	49.6 inches	
Screen resolution	1920 × 1080	
Audio power	10 W + 10 W	
Power supply	120 V ~ 60 Hz	
Receiving systems	Analog	NTSC
	Digital	ATSC / QAM
Receiving channels	VHF: 2~13 UHF: 14~69 CATV: 1 ~ 125 Digital Terrestrial Broadcast (8VSB): 2 ~ 69 Digital cable (64/256 QAM): 1 ~ 135	
Tuner type	Frequency synthesized	
Environmental conditions	Temperature:	41°F ~ 95°F (5°C ~ 35°C)
	Humidity:	20% ~ 80% RH
	Atmospheric pressure:	86 kPa ~ 106 kPa
Component Input	480 I / 60 Hz, 480 P / 60 Hz, 720 P / 60 Hz, 1080 I / 60 Hz, 1080P/60Hz	
VGA Input	VGA (640×480 / 60 Hz), SVGA (800×600 / 60 Hz), XGA (1024×768 / 60 Hz)	
HDMI Input	RGB / 60 Hz	(640×480, 800×600, 1024×768)
	YUV / 60 Hz	(480 I, 480 P, 720 P, 1080 I, 1080P)

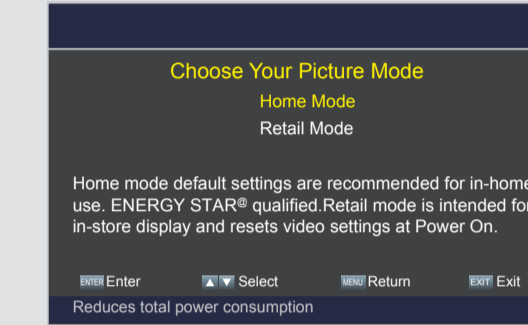
8 TURNING THE TV ON FOR THE FIRST TIME

- ▶ **Menu Language**



Connect your TV's power cord to a power outlet, then press power. The initial setup screen opens. Press [▲/▼] button to select your language, press [ENTER] button to confirm.

- ▶ **Picture Mode**

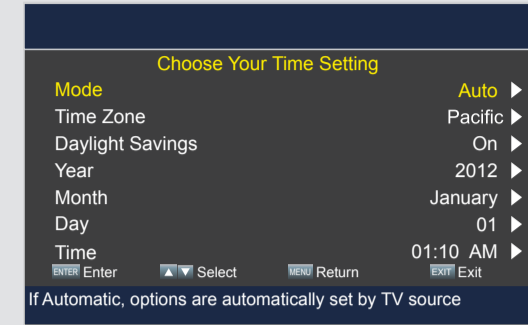


Press [▲/▼] to select your Picture Mode: Home Mode or Retail Mode, press [ENTER] button to confirm. If you select Retail Mode, a message appears "Are you sure you want retail mode?" Select "Yes" to continue, or select "No" to change your selection. For energy saving, we kindly suggest you select the Home Mode.

Note:

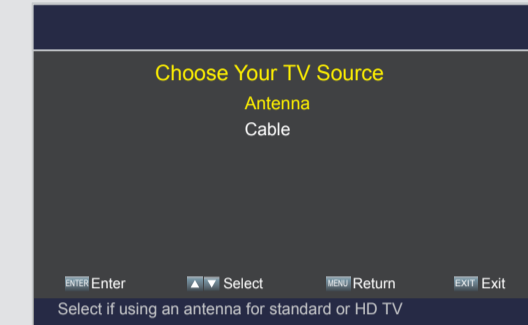
If you are using a cable or satellite box and you have connected it to the TV using a Coaxial cable, you should select the cable option. Be sure the cable or satellite box is turned on before starting the channel scan. If you use a cable or satellite box connected to AV, Component or HDMI, you don't need to scan for channels.

- ▶ **Time Setting**



Setting Time Zone: Select the local time zone according to your region.
Setting the Time: Press [▲/▼] to select the number you want to set and press [▲/▼] to set.

- ▶ **TV Source**



Press [▲/▼] to select your TV Source: Antenna or Cable, press [ENTER] button to confirm. If you press [EXIT] to exit the scanning, a message appears "Please Run Channel Auto Scan", you should scan channels from the menu of Channels

9 HELP TOPICS

When there is something wrong with your TV, you can try turning off the TV and restarting it. You can also refer to the following chart for problem and solution tips. If the problem cannot be resolved, please contact Hisense for additional assistance 1-888-935-8880.

SYMPTOMS	POSSIBLE SOLUTIONS
No sound or picture	<ul style="list-style-type: none"> • Confirm power cord is plugged into the AC outlet and the AC outlet is getting electricity. • Attempt to power on unit using the power button on both the TV and the Remote.
Picture is normal, but no sound	<ul style="list-style-type: none"> • Check the volume settings. • Check if Mute mode is set "on".
I have connected an external source to my TV and I get no picture and/or sound.	<ul style="list-style-type: none"> • Check for the correct output connection on the external source and for the correct input connection on the TV. • Make sure you have made the correct selection for the input mode for the incoming signal.
Sound but no picture or black and white picture.	<ul style="list-style-type: none"> • If black and white picture first unplug TV from AC outlet and replug after 60 seconds. • Check Color Setting if picture is black and white.
Sound and picture distorted or appear wavy.	<ul style="list-style-type: none"> • An electrical appliance may be affecting TV set. Turn off any appliances, if interference goes away, move appliance farther away from TV. • Insert the power plug of the TV set into another power outlet.
Sound and picture is blurry or cuts out momentarily.	<ul style="list-style-type: none"> • If using an external antenna, check the direction, position and connection of the antenna. • Adjust the direction of your antenna or reset or fine tune the channel.
[CHA/V] don't work when I set the Channel to Cable? They work with the Air setting?	<ul style="list-style-type: none"> • After switching to Cable, please auto program the channels. The TV will "remember" all the channels then the TV will allow you to surf the channels with [CHA/V] buttons.
Remote control does not work.	<ul style="list-style-type: none"> • Confirm that TV still has power and is operational. • Change the batteries in the remote control. • Check if the batteries are correctly installed. • Clean the front of the remote control (LED window). • If using a universal remote, be sure to select the TV mode on the remote. • If the remote still does not work: <ul style="list-style-type: none"> -Remove and reinstall the batteries correctly to reset the remote or install new batteries. -Press the Power button to turn on the TV. With a universal remote if you have reset or changed the batteries you will need to reprogram the remote for the other units. • Check if there is obstruction between the remote control and the TV. • Check if you have a digital camera / camera phone, you can aim the front of the remote at camera lenses (at this time, the camera should set on camera mode, not play mode). Observe the camera screen while pressing a button on the remote control; you should see flashing light on the screen. If there is no light observed, the remote control is not working. You need to repair or replace the remote control.