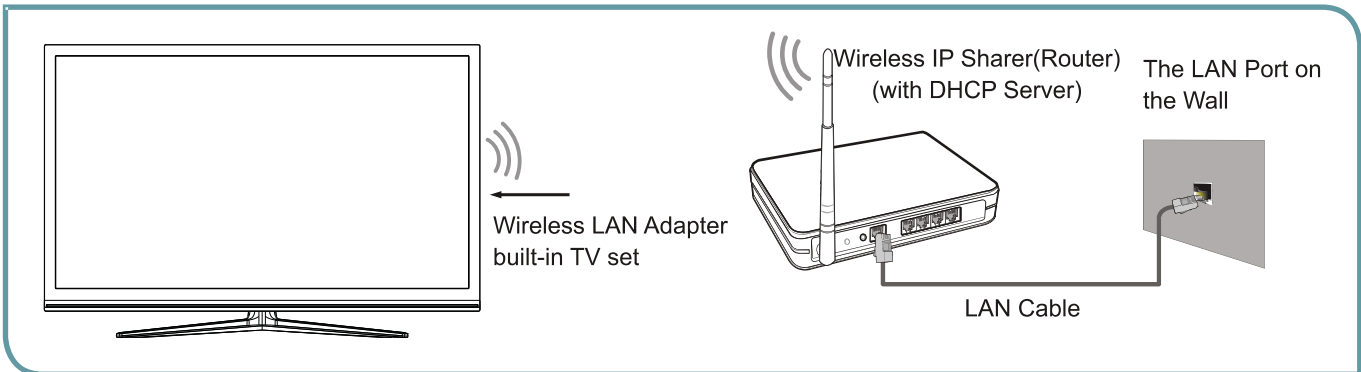


Advanced Features

➤ Connecting to a Wireless Network

To connect your TV to your network wirelessly, you need a wireless router or modem. See the illustration below.



Hisense's built-in Wireless LAN Adapter supports the IEEE 802.11 b/g/n communication protocols. Hisense recommends using IEEE 802.11n router. When you play the video over a IEEE 802.11b/g connection, the video may not play smoothly.

☑ NOTES

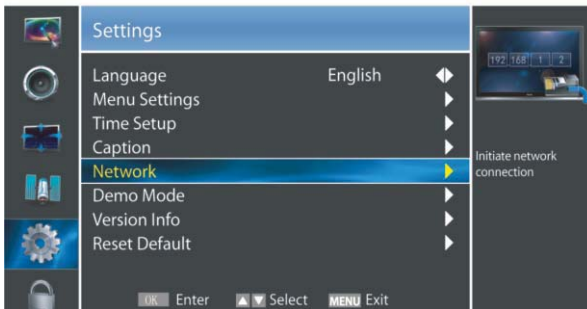
- You must use the Hisense's built-in Wireless LAN Adapter to use a wireless network, the set doesn't support external USB network adapter.
- To use a wireless network, your TV must be connected to a wireless IP sharer. If the wireless IP sharer supports DHCP, your TV can use a DHCP or static IP address to connect to the wireless network.
- Select a channel for the wireless IP sharer that is not currently being used. If the channel set for the wireless IP sharer is currently being used by another device nearby, this will result in interference and communication failure.
- If you apply a security system other than the systems listed below, it will not work with the TV.
- If Pure High-throughput (Greenfield) 802.11N mode is selected and the Encryption type is set to WEP, TKIP or TKIP-AES (WPS2 Mixed) for your Access Point (AP), Hisense TVs will not support a connection in compliance with new Wi-Fi certification specifications.
- If your AP supports WPS (Wi-Fi Protected Setup), you can connect to the network via PBC (Push Button Configuration) or PIN (Personal Identification Number). WPS will automatically configure the SSID and WPA key in either mode.
- Connection Methods: You can setup the wireless network connection three ways.
 - Scan
 - Manual
 - Auto

Advanced Features

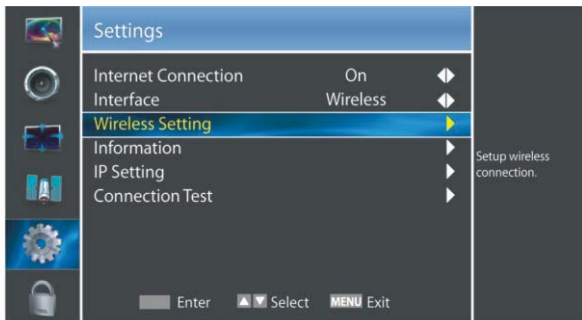
❏ Wireless Setting

- How to set up

1. Turn on your TV, operate according to the description in the Settings menu until the Network screen appears.



2. On the Network screen, select Configuration and press [ENTER] button to enter the submenu.



3. Set Internet Connection to On and Interface to Wireless.
4. Select Wireless Setting and press [ENTER] button to enter it.
You can select: Scan\Manual\Auto.
5. If you select Scan, a screen will appear listing all of the wireless networks within range of the TV. Use the [▲/▼] keys to select the wireless network with your router SSID and press [ENTER] to confirm. Proceed to Step 7.
6. If you select Manual, a screen will appear prompting you to enter the SSID of your wireless network. Press [ENTER] and an on-screen keyboard will pop up. Enter the SSID and select OK. Press [ENTER] to confirm and a screen will appear prompting you select the security mode for your wireless network. Use the [▲/▼] keys to select the proper security mode and press [ENTER] to confirm. If you selected None for the security mode, proceed to step 9.
7. A screen will appear prompting you to enter the password for the selected security mode. Press [ENTER] and an on-screen keyboard will pop up. Enter the password and select OK. Press [ENTER] to confirm. Proceed to Step 9.
8. If you select Auto, a screen will appear prompting you to select PIN (personal identification number) or PBC

(push button configuration) setup. Choose the method supported by your wireless access point.

- 8a. If you choose PIN, an identification number will appear on the screen for you to enter into the access point. After entering the PIN, press the [▶] key. If the PIN is in use by another device, select [REFRESH] to obtain a new PIN and enter it into the access point. After entering the PIN, press the [▶] key.
- 8b. If you choose PBC, a screen will appear prompting to press [▶] key. After pressing the [▶] key you have two minutes to locate and press the Push Button on your access point to connect to the TV.
9. Press the [MENU] key to return to the previous menu.
10. Select Connection Test to check the Internet connectivity.

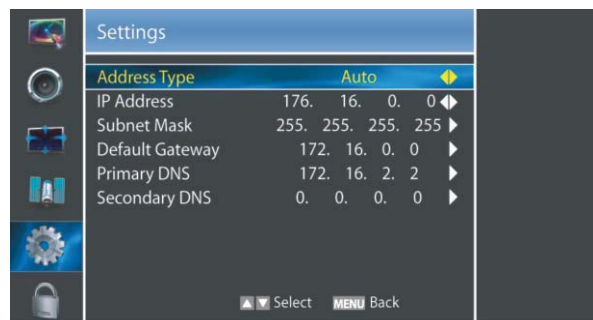
DLNA Settings

Computer, TV and other digital devices can be connected via DLNA and they can share files with each other. You can use the TV set as a DLNA DMP (Digital Media Player) device to enjoy movies, pictures, music and other multimedia materials in your computer through DLNA connection.

DLNA Setting needs to be set on TV and computer Respectively.

❏ Network Setup:

1. Turn on your TV, operate according to the description in the Settings menu until the Network screen appears.
2. On the Network screen, select Configuration and press [ENTER] button to enter the submenu.
3. Set Internet Connection to On and Interface to Ethernet.
4. Select IP Setting and press [ENTER] button to enter it.
5. Set Address Type to Auto.

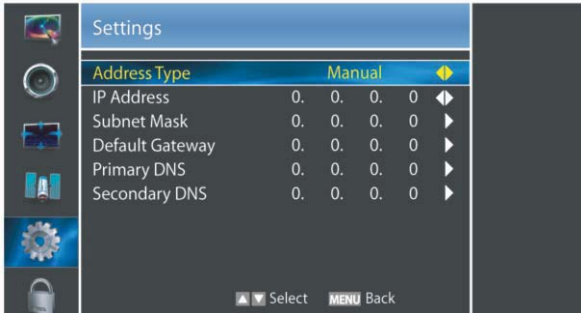


6. Auto acquires and enters the necessary connection values automatically.
7. If the connection values are not automatically entered, please check your modem and router manuals for directions to enable automatic IP addressing by DHCP. Or, follow the steps below to manually configure the network connection.

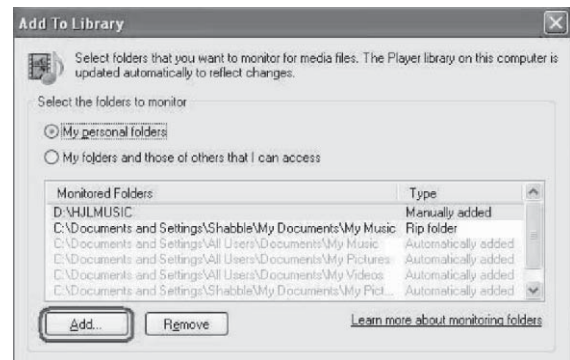
Advanced Features

To set up your TV's network connection manually, follow these steps:

- 1). Follow Steps 1 through 5 in the "How to set up automatically" procedure.
- 2). Set Address Type to Manual.



3. The "Add To Library" will pop up on the screen. Click "Add".



4. Select a folder and click OK button.



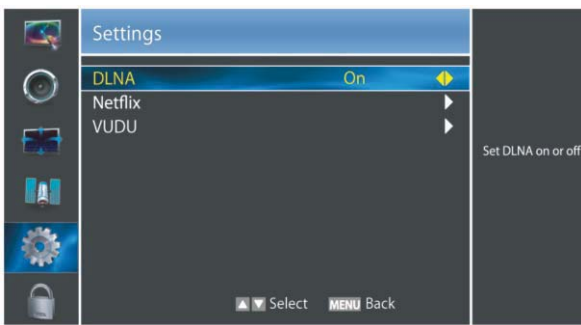
5. Click "Close" to close the dialog.



8. Set Address Type to Manual, enter IP Setting. Then press [▲/▼] button to select IP Address and press [◀/▶] button to move the cursor to the entry field. Then press 0~9 buttons to enter the numbers.
9. Press [MENU] button to exit IP Address and press [▲/▼] button to select the next options to enter the numbers.
10. When done, press [MENU] to return to the previous menu.
11. Select Connection Test to check the Internet connectivity.

❏ Set DLNA to On:

1. On the Network screen, select Applications and press [ENTER] button to enter the submenu.
2. Press [◀/▶] button to set DLNA to On.



Media Share Settings in Computer

If your computer does not support DLNA, you may install software that supports DLNA such as TVersity or Windows Media Player. We recommend Windows Media Player as the installation and setup is easier.

1. Start the Windows Media Player 11 or later version.
2. Click "Library" and then "Add to Library..."

Settings to Share Files

1. Click "Library" and move the cursor to select "Media Sharing..."

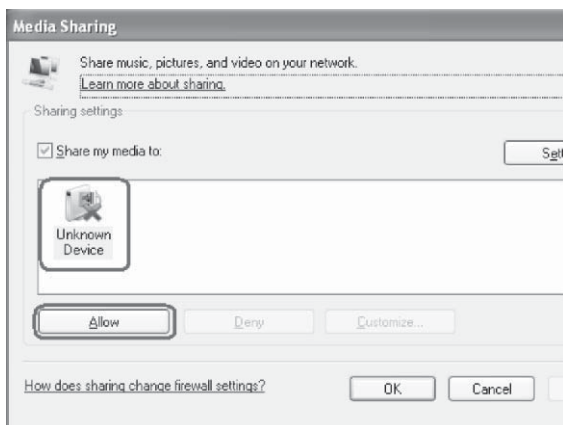
Advanced Features



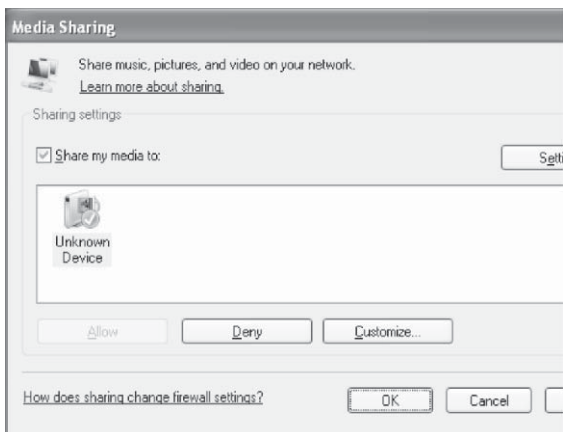
2. Click the box to select “Share my media” and click [OK].



3. An equipment icon will appear on the white area if the DLNA Settings has been correctly set. Select the appropriate icon and then click “Allow”.



4. The TV now has access to the shared files on the computer.



Network Function

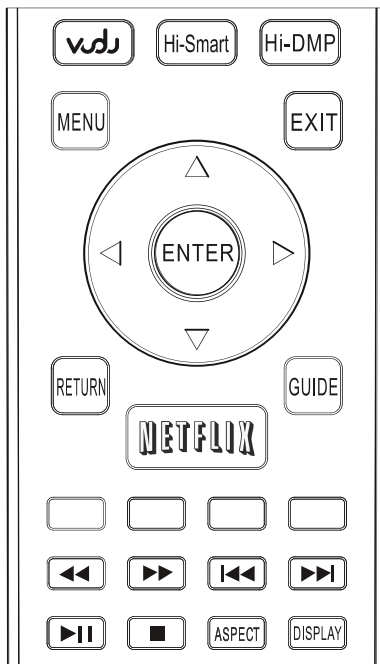
NOTICE FOR USE

If you use VUDU services, see the following note before using it.

1. Use of Internet services requires a working broadband Internet connection (1 to 2 Mbps for SD video, 2.25 to 4.5 Mbps for HD video and 4.5 to 9 Mbps for HDX video).
2. VUDU and other Internet-based services are not provided by Hisense, may change or be discontinued at any time and may be subject to restrictions imposed by your Internet service provider. The quality, functionality, or availability of such services may be affected by the capacity of your Internet connection. Use of VUDU video-on-demand and other Internet services may require the creation of a separate account through a computer with internet access.
3. Certain VUDU services may not be available for this TV model.
4. VUDU video-on-demand and other Internet services may require payment of one-time and/or recurring charges.
5. You are solely responsible for any charges incurred as a result of using Internet-based content, including, without limitation, communications charges for the provision of Internet or network services and any charges incurred for third-party Internet content services, such as video on demand or subscription services. All third-party services are provided in accordance with whatever terms and conditions are established between such third-party providers and you.
6. HISENSE MAKES NO REPRESENTATIONS OR WARRANTIES ABOUT THE CONTENT, AVAILABILITY OR FUNCTIONALITY OF THE VUDU SERVICE OR OTHER INTERNET DELIVERED THIRD-PARTY SERVICES AND DOES NOT WARRANT THAT ANY OF THEM WILL BE UNINTERRUPTED, ERROR FREE OR SATISFACTORY. ANY IMPLIED WARRANTY, INCLUDING BUT NOT LIMITED TO ANY IMPLIED WARRANTY OF MERCHANTABILITY OR FITNESS FOR A PARTICULAR PURPOSE OF ANY THIRD PARTY CONTENT OR SERVICE, IS EXPRESSLY EXCLUDED AND DISCLAIMED. UNDER NO CIRCUMSTANCES WILL HISENSE BE LIABLE IN CONTRACT, TORT OR UNDER ANY OTHER THEORY FOR ANY DAMAGES ARISING OUT OF OR IN CONNECTION WITH YOUR USE OF ANY CONTENT OR SERVICE PROVIDED BY ANY THIRD PARTY, EVEN IF ADVISED OF THE POSSIBILITY OF SUCH DAMAGES.

Advanced Features

Operational buttons



Buttons	Description
	Press to launch VUDU Movies App directly.
	Opens the Hi-Smart Hub with links to various Internet Services.
	Press to launch Netflix App directly.
	Selects the on-screen menu items.
ENTER	Confirms selections.
EXIT	Closes the menu.
RETURN	Returns to the previous menu.
	Stops playback and displays the movie title screen.
	Pauses playback. Press the button to return to playback.
	Displays the TrickPlay screen and fast forwards playback.
	Displays the TrickPlay screen and fast reverses playback.
	Plays the next video.
	Plays the previous video.

Enter the Network Applications

1. Press the [Hi-Smart] button to display Hi-Smart Hub.



2. Press [] button to select the interface you want to view and press [ENTER] to enter the following description.

No	Interface description
1	Live TV
2	Information
3	Apps Market
4	My Applications
5	Quick Launcher Bar

VUDU HD Movies

Brief introduction

VUDU is an on-demand service that offers high-definition movies on Web.

For enjoying more movies, please register and log in to your account.

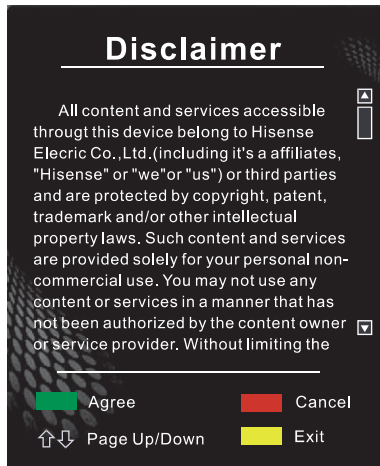
Operation instructions

You can access the VUDU HD Movies by the following method:

1. Press the [Hi-Smart] button to display network main menu.
2. Press [] button to select the VUDU HD Movies icon and press [ENTER] to enter it (Refer to “Enter the network application”), or press [VUDU] button to enter directly.
3. Select the Sign Up Now icon on the VUDU HD Movies interface, and press [ENTER] to enter.

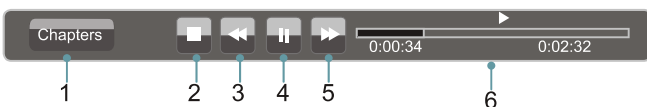
Advanced Features

- Please read the content of the Disclaimer first. If agree, press [Green] button and then access the network main menu. If disagree, press [Red] button or [Yellow] button to cancel or exit Disclaimer menu, then network cannot be used.



- Enter your email address to start your VUDU experience. (Refer to "How to Input the Email Address")
- Press [▲/▼/◀/▶] button to move the cursor to select service items in the VUDU HD Movies home page, and press [ENTER] button to confirm.
- In the process of watching a movie, press [ENTER] button to display/exit the tool bar, press [◀/▶] button to select the function icon, and press [ENTER] button to confirm.
- Press [RETURN] button to return the upper menu, or press [EXIT] button to close the menu.

● Tool Bar



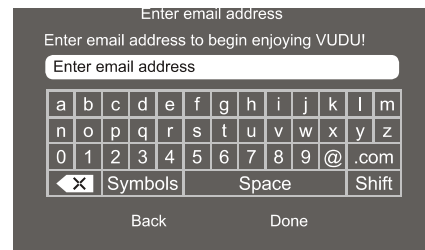
- Press [ENTER] button to enter and press [◀/▶] button to select the chapter.
- Stop playback.
- Fast backward. Press [ENTER] button to select the backward speed. You can press [◀◀] button to achieve the function.
- Play/Pause. You can press [▶||] button to play/pause directly when there is no control bar on the screen.
- Fast forward. Press [ENTER] button to select the forward speed. You can press [▶▶] button to achieve the function.
- Progress bar. The progress bar when playing.

❏ How to Input the Email Address

- Press [▲/▼/◀/▶] button to move the cursor to the address bar and press [ENTER] button to confirm.

- Press [ENTER] button to display the keyboard. There are some shortcuts on the bottom of the keyboard so that you can input part of the address often used directly.

Other keys are used as the keyboard of your computer.



- Press [▲/▼/◀/▶] button to move the cursor to the characters you want to select and then press [ENTER] button to confirm.

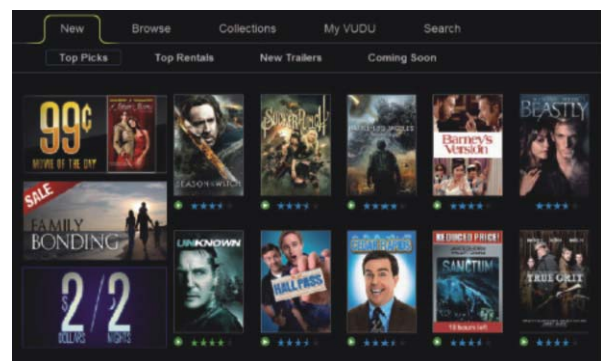
If you want to delete one character, move the cursor to Back key ◀X and press [ENTER] button to confirm.

- Move the cursor to Done key and press [ENTER] button to confirm if you have completed the address input. Then the new address will appear on the address bar.

❏ NOTE

TV screen may be difference with picture.

❏ VUDU HD Movies home page



Title	Function
New	The latest movies
Top Picks	Mostly picked up movies
Top Rentals	Mostly rented movies
New Trailers	Latest trailers
Coming Soon	The movies can be picked soon
Browse	Browse all the movies in VUDU
Collections	Browse the classified movies
My VUDU	The movies user bought or rented
Search	Search movies in VUDU

Advanced Features

VUDU HD Movies subpage



Title	Function
Rent/Own	To rent or buy current movie
Watch Trailer	To watch trailer of the current movie
2 Minute Preview	To preview current movie for 2 minutes
Add to Wishlist	Add current movie to your wishlist
Rate/share	To rate current movie or share it to your friends in Facebook or Twitter
Overview	The overview of current movie
Cast&Crew	The cast and crew of current movies and find their related movies
Reviews	The reviews of current movie
Similar	The similar types of movies
More Info	The detail information of current movie

3. Press [▲/▼/◀/▶] button to select the widget you want to access, and press [ENTER] to enter it.
4. You can press [RETURN] to return the upper menu or press [EXIT] button to close the Widgets display.

VUDU Apps home page



Title	Function
My favorites	The user's favorite applications
Most popular	The most popular applications
Newest	The newest applications in VUDU
Browse by genre	Browse applications by genre
Show Ticker	Show the applications at the bottom of screen while watching TV
Info&settings	VUDU Apps system information

VUDU Apps

Brief introduction

The applications platform for connected TVs.

- VUDU Apps provides customers with access to a wide range of Internet services and applications including streaming video, music on demand, photo browsing, social networking and more.
- VUDU Apps supports the development of responsive apps designed specifically for use on home HD televisions.
- VUDU Apps uses a unique, cloud-based architecture optimized for consumer electronics devices, including delivering the latest applications to consumers without the need for software downloads or frequent firmware updates.

Operation instructions

You can access the VUDU Apps by the following methods:

1. Press the [Hi-Smart] button to display network main menu.
2. Press [▲/▼/◀/▶] button to select the VUDU Apps icon and press [ENTER] to enter it.

Netflix

Netflix unlimited membership required.

Brief introduction

Instantly watch thousands of TV episodes & movies streaming over the Internet from Netflix. Unlimited membership required.

NOTES

- TV screen may be difference with picture.
- For more information on Netflix visit <http://www.netflix.com/help> or login to your Netflix account and click "Help" at the top of the page.
- Your broadband fluency and picture quality depend on the network speed and original bit rate.
- Illustrations are examples and may differ from the actual Netflix screens. The display and operations may change as a result of a software update. Use Netflix without configuring a proxy server. Part or all of Netflix may not be available when connecting to the Internet via a proxy server.

Advanced Features

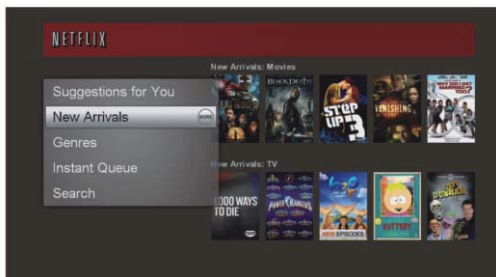
❖ Operation instructions

1. Press the [Hi-Smart] button to display network main menu.
2. Press [▲/▼/◀/▶] button to select the Netflix icon and press [ENTER] to enter it, or press [NETFLIX] button to enter Netflix website directly.
3. Input Email and Password in following window to sign in. (Refer to “How to Input the Email Address”)



4. Press [▲/▼/◀/▶] button to move the cursor to select service items in the Netflix home page, and [ENTER] button to confirm.
5. In the process of watching a movie, press operational buttons to control the movie.
6. Press [RETURN] button to return the upper menu, or press [EXIT] button to close the menu.

❖ Netflix Movies home page



Title	Function
Suggestions for you	The movies suggested for you by Netflix
New Arrivals	The new arrivals
Genres	Browse movies in different genres
Instant Queue	Your list of movies
Search	Search for available titles

Opera

- ❖ The function of the buttons on the remote control

Buttons	Description
▲/▼/◀/▶	Press these buttons to move the cursor on the screen as the mouse of the computer.
MENU	Press the button to display/cancel the keyboard on the screen.
ENTER	Press the button to confirm the selection. Press the button twice to search the new website.

❖ Operation instructions

● How to enter the Opera Browser

The Network setup must be correct. Then you can use the network.

1. Press the [Hi-Smart] button to display network main menu.
2. Press [▲/▼/◀/▶] button to select the opera icon and press [ENTER] to enter it.



3. Then the default interface will appears on the screen. There are some function icons on the bottom of the screen:



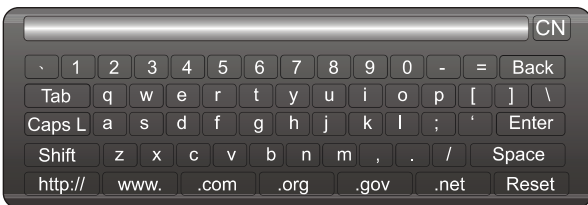
● The function of the buttons on the screen:

1. Back to main page.
Move the cursor to the icon and press [ENTER] button to return to the default interface.
2. Back to previous page.
Move the cursor to the icon and press [ENTER] button to return to the previous viewed web page.
3. Return a page.
Move the cursor to the icon and press [ENTER] button to go forward to the previous viewed web pages.

Advanced Features

- Refresh page.
Move the cursor to the icon and press [ENTER] button to refresh the current page.
- Folder.
Move the cursor to the icon and press [ENTER] button to enter the favorite folder.
- Add Folder.
Move the cursor to the icon and press [ENTER] button to add the website to the favorite folder.
- Help.
Move the cursor to the icon and press [ENTER] button for help.
- Address bar.
Input the website you want to view.
- Sure to enter the Address of the page
Move the cursor to the icon and press [ENTER] button to search the website.
- Exit Opera.
Move the cursor to the icon and press [ENTER] button to close the page.

● How to Input the New Address



- Press [▲/▼/◀/▶] button to move the cursor to the address bar and press [ENTER] button to confirm.
- Press [MENU] to display the keyboard.
There are some shortcuts on the bottom of the keyboard so that you can input part of the address often used directly.
Other keys are used as the keyboard of your
- Press [▲/▼/◀/▶] button to move the cursor to the characters you want to select and then press [ENTER] button to confirm.
If you want to delete one character, move the cursor to Back key and press [ENTER] button to confirm. Or if you want to re-enter all the characters, move the cursor to Reset key and press [ENTER] button to confirm.
- Move the cursor to Enter key and press [ENTER] button to confirm if you have completed the address input.
Then the new address will appear on the address bar.
- Move the cursor to the address bar and press [ENTER] button twice to enter the website.
Or move the cursor to the ➔ and press [ENTER] button to search.

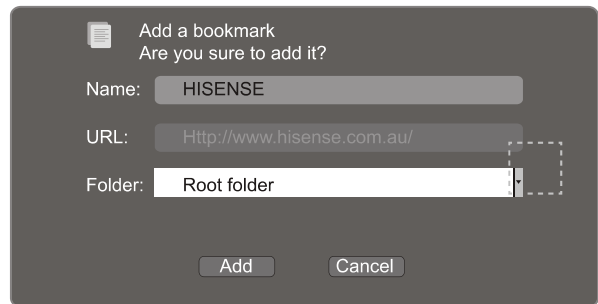
☑ NOTE

There is only recommend to open the English website.

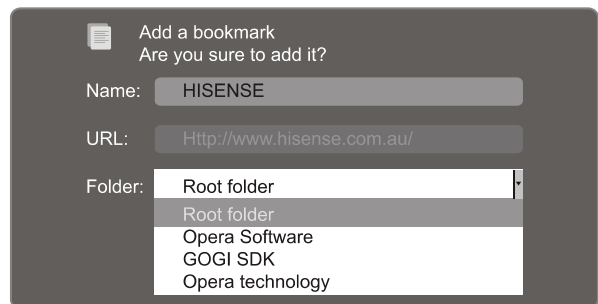
● How to Add a Bookmark

If you want to find the often viewed website from the favorite folder, you can follow the steps to add it to the folder.

- Input the address on the address bar and enter it.
- Press [▲/▼/◀/▶] button to move the cursor to the ⚙ and press [ENTER] button to confirm.
The menu will pop up on the screen.



- Press [▲/▼/◀/▶] button to move the cursor to the icon marked with dashed box on the right screen. Then press [ENTER] button to confirm to display all the folders.
- Press [▲/▼] button to select the folder you want to add the bookmark to. And press [ENTER] button to confirm.
- Move the cursor to the Add button and then press [ENTER] button to confirm.
If you do not want to add the book mark, move the cursor to the Cancel button and press [ENTER] button to confirm.

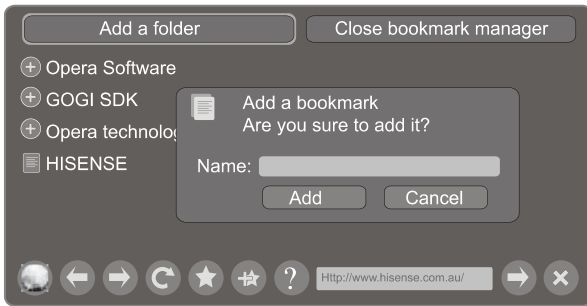


● How to Add a Folder

You can add a folder to the favorite as follows:

- Move the cursor to the ⚙ icon and press [ENTER] button to confirm. The menu will pop up on the screen.
- Move the cursor to Add a folder button and press [ENTER] button to confirm.
A pop-up menu appears on the screen.
- Move the cursor to Name bar and press [ENTER] button to confirm. Follow the steps 2~4 in "How to Input the New Address" to input the name.
- Move the cursor to Add button and press [ENTER] button to confirm and the new folder has been added.

Advanced Features

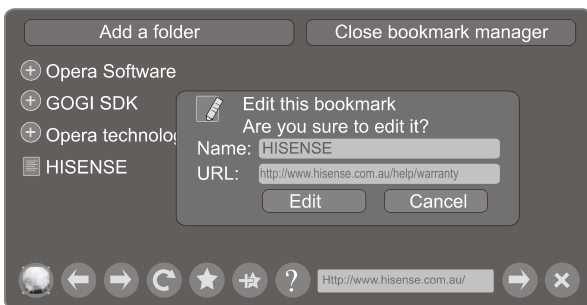


● How to Edit/Delete a Folder/Bookmark

1. Move the cursor to the icon and press [ENTER] button to confirm. The menu will pop up on the screen.
2. Move the cursor to the folder /bookmark directly and there will be two icons on the right of it. Move the cursor to one of the icons and press [ENTER] button to display a pop-up menu.

: Edit button.

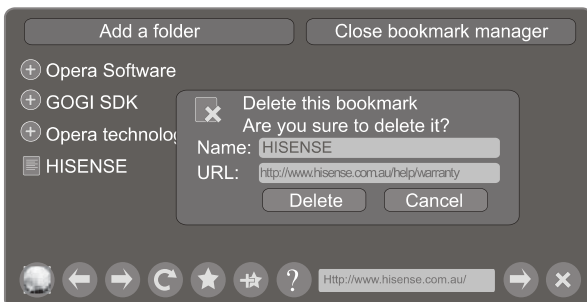
- 1). Move the cursor to the Name/URL bar and press [ENTER] button to confirm. Follow the steps 2~4 in "How to Input the New Address" to edit it.



- 2). Move the cursor to Edit button, then press [ENTER] to confirm and the folder/bookmark will be saved.

: Delete button.

Move the cursor to the Delete button and press [ENTER] button to confirm. Then the folder/bookmark will be deleted from the favorite folder.

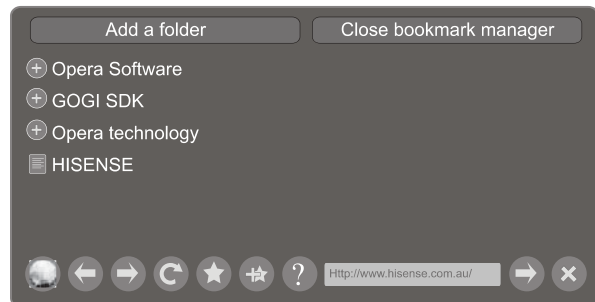


☑ NOTE

There is only Name bar on the pop-up menu for folder.

● How to select the Website from the favorite folder

1. Move the cursor to the icon and press [ENTER] button to confirm. The menu will pop up on the screen.
2. Move the cursor to the icon before the folder name and press [ENTER] button to confirm. The websites in the folder will appear in the following lines.
3. Move the cursor to the website you want to view and press [ENTER] button to confirm. If the website is in the root folder, you can select it directly. And do not need operate as step 2.



● How to exit the manager

Move the cursor to the Close bookmark manager icon and press [ENTER] button to confirm.

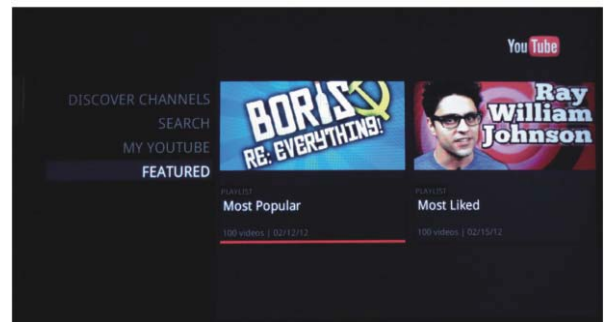
YouTube

✚ Brief introduction

Watches the video via YouTube.

✚ Operation introduction

1. Press the [Hi-Smart] button to display network main menu.
2. Press [] button to select the YouTube icon and press [ENTER] to enter it.

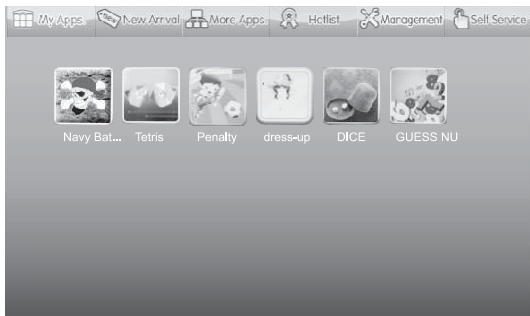


Advanced Features

Other Apps

Operation introduction

1. Press the [Hi-Smart] button to display network main menu.
2. Press [▲/▼/◀/▶] button to select the Other Apps and press [ENTER] to enter it.



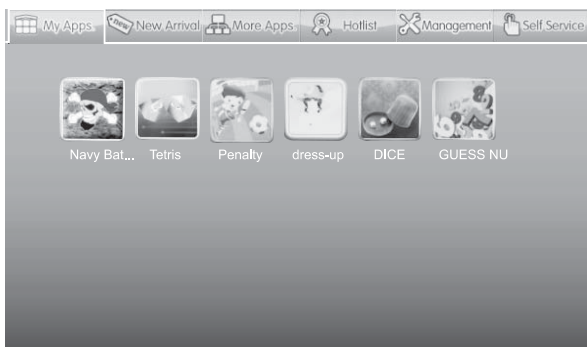
Title	Function
My Apps.	Your local applications
New Arrival	The applications of the latest online
More Apps.	Applications classification to download
Hotlist	The pop ranking applications
Management	Delete the local applications
SelfService	View the service information

3. Follow the steps as following.

● My Apps:

Display the applications of downloaded and installed on the local.

- 1) Press [◀/▶] to select the title of My Apps and press [▼/ENTER] to enter it.

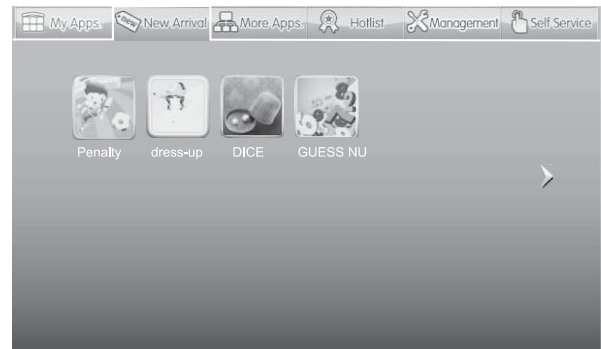


- 2) Press [▲/▼/◀/▶] to select the applications you want to enter and press [Enter] to confirm.

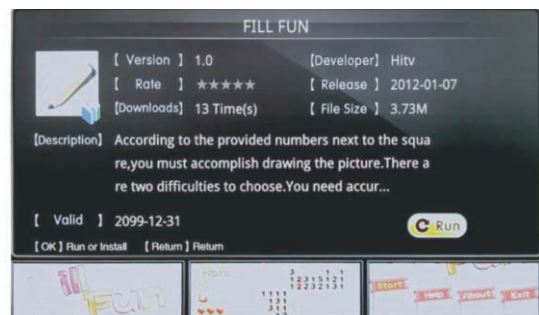
- 3) Press [RETURN] to return to the title.

● New Arrival:

- 1) Press [◀/▶] to select the title of New Arrival and press [▼/ENTER] to enter it.



- 2) Press [▲/▼/◀/▶] to select the applications you want to install and press [ENTER] to confirm.



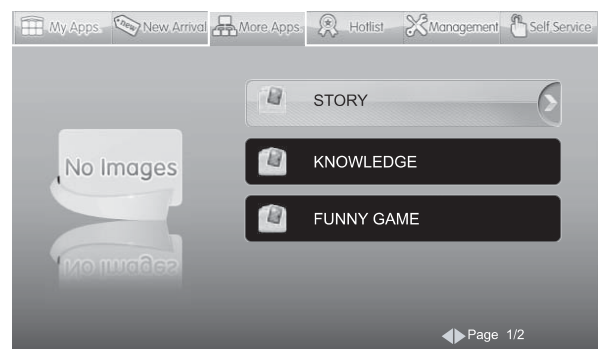
- 3) Press [ENTER] to install the applications or press [RETURN] to return to the new arrival home page. If installed, the application will be shown in My Apps interface.

- 4) Press [RETURN] to return to the title.

● More Apps:

Classify the applications by story, knowledge and funny game.

- 1) Press [◀/▶] to select the title of More Apps and press [▼/ENTER] to enter it.



- 2) Press [▲/▼] to select the classification and press [ENTER] to confirm.

- 3) Press [▲/▼/◀/▶] to select the applications you want to install and press [ENTER] to confirm.

- 4) Press [ENTER] to install the applications or press [RETURN] to return to the More Apps home page.