

FIGURE 1
LED LCD TV (M/N: LTDN50K316XWUS3D)
COVER REMOVED



FIGURE 2
LED LCD TV (M/N: LTDN46K316XWUS3D)
RF BOARD POSITION

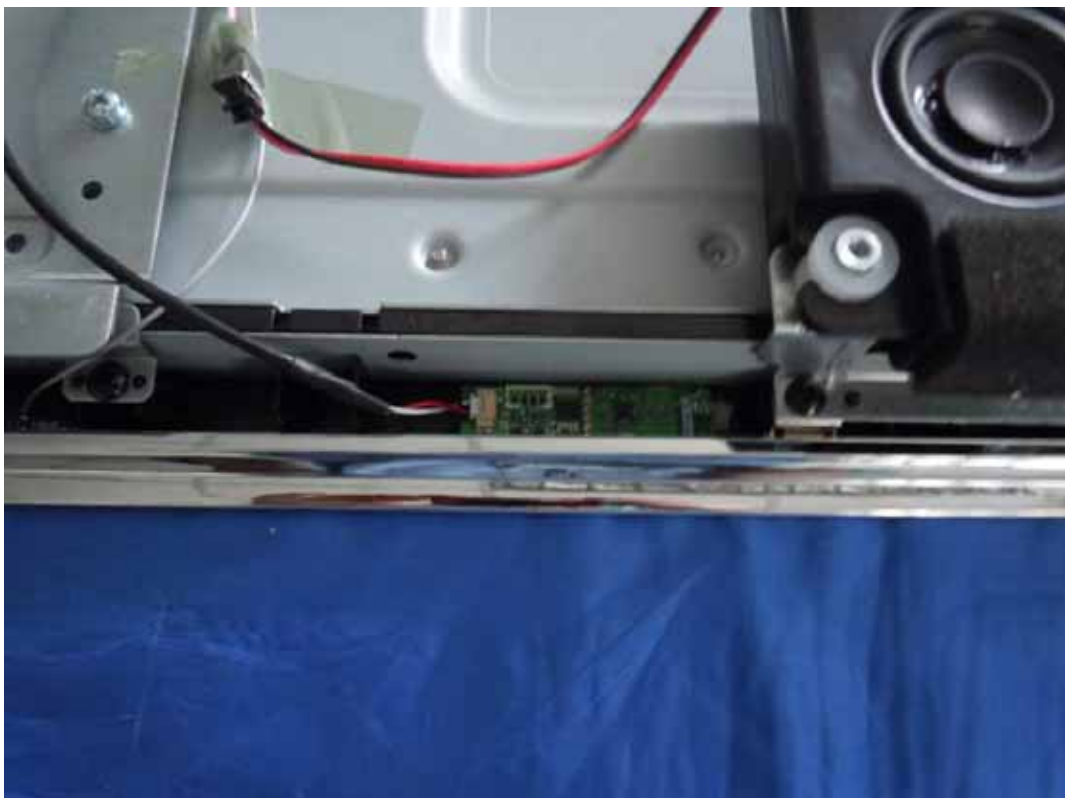


FIGURE 3
LED LCD TV (M/N: LTDN50K316XWUS3D)
PANEL LABEL



FIGURE 4
LED LCD TV (M/N: LTDN50K316XWUS3D)
POWER BOARD (COMPONENT SIDE)



FIGURE 5
LED LCD TV (M/N: LTDN50K316XWUS3D)
POWER BOARD (SOLDERED SIDE)

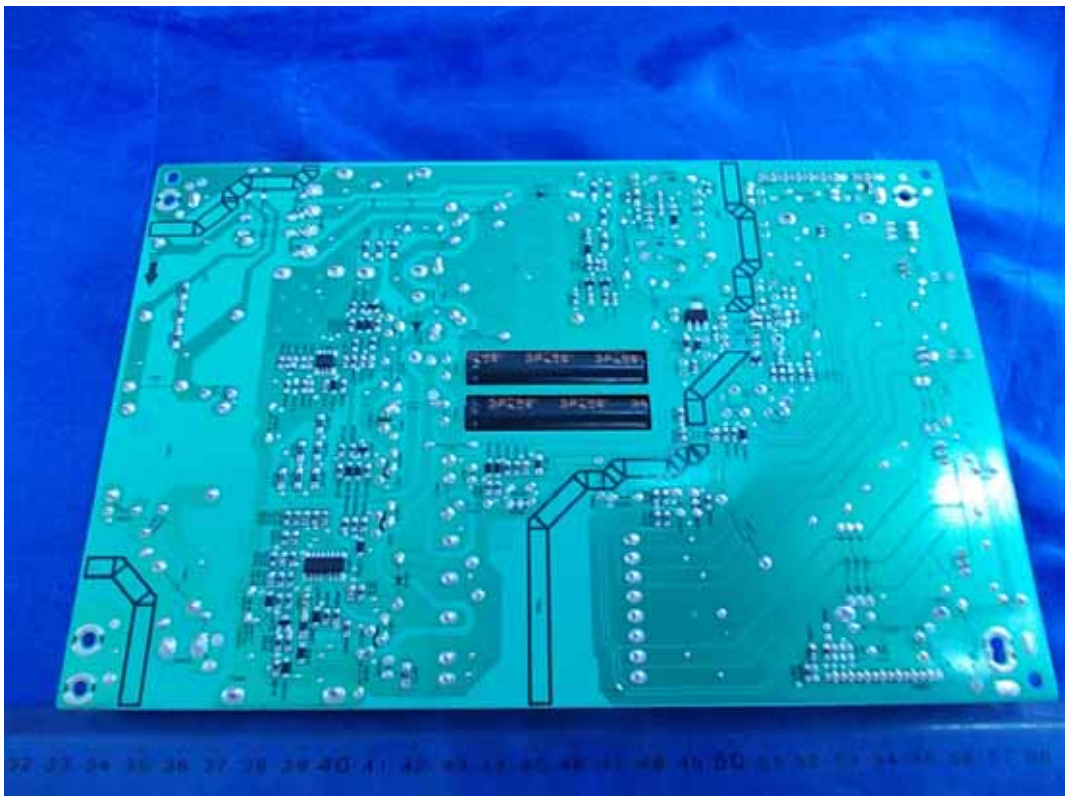


FIGURE 6
LED LCD TV (M/N: LTDN50K316XWUS3D)
MAIN BOARD (COMPONENT SIDE)



FIGURE 7
LED LCD TV (M/N: LTDN50K316XWUS3D)
MAIN BOARD (SOLDERED SIDE)



FIGURE 8
LED LCD TV (M/N: LTDN50K316XWUS3D)
TUNER ON MAIN BOARD



FIGURE 9
LED LCD TV (M/N: LTDN50K316XWUS3D)
CHIP ON MAIN BOARD



FIGURE 10
LED LCD TV (M/N: LTDN50K316XWUS3D)
CRYSTAL #1 ON MAIN BOARD



FIGURE 11
LED LCD TV (M/N: LTDN50K316XWUS3D)
CRYSTAL #2 ON MAIN BOARD



FIGURE 12
LED LCD TV (M/N: LTDN50K316XWUS3D)
KEY BOARD (COMPONENT SIDE)



FIGURE 13
LED LCD TV (M/N: LTDN50K316XWUS3D)
KEY BOARD (SOLDERED SIDE)

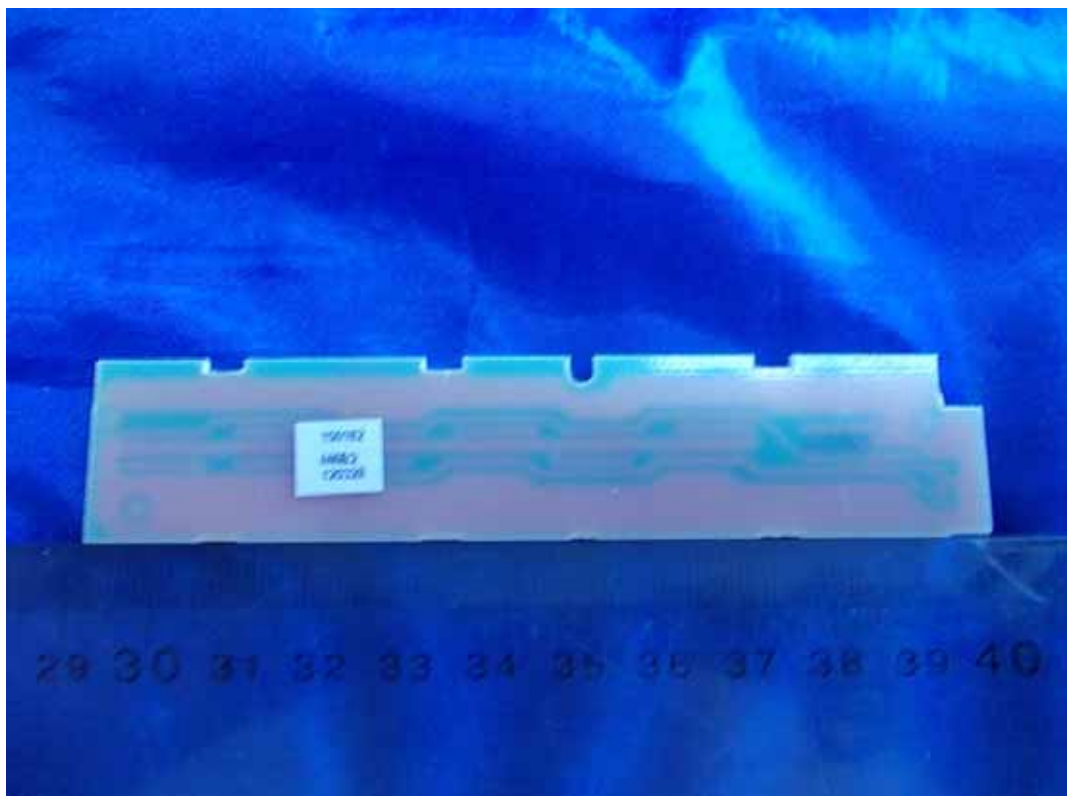


FIGURE 14
LED LCD TV (M/N: LTDN50K316XWUS3D)
IR BOARD (COMPONENT SIDE)

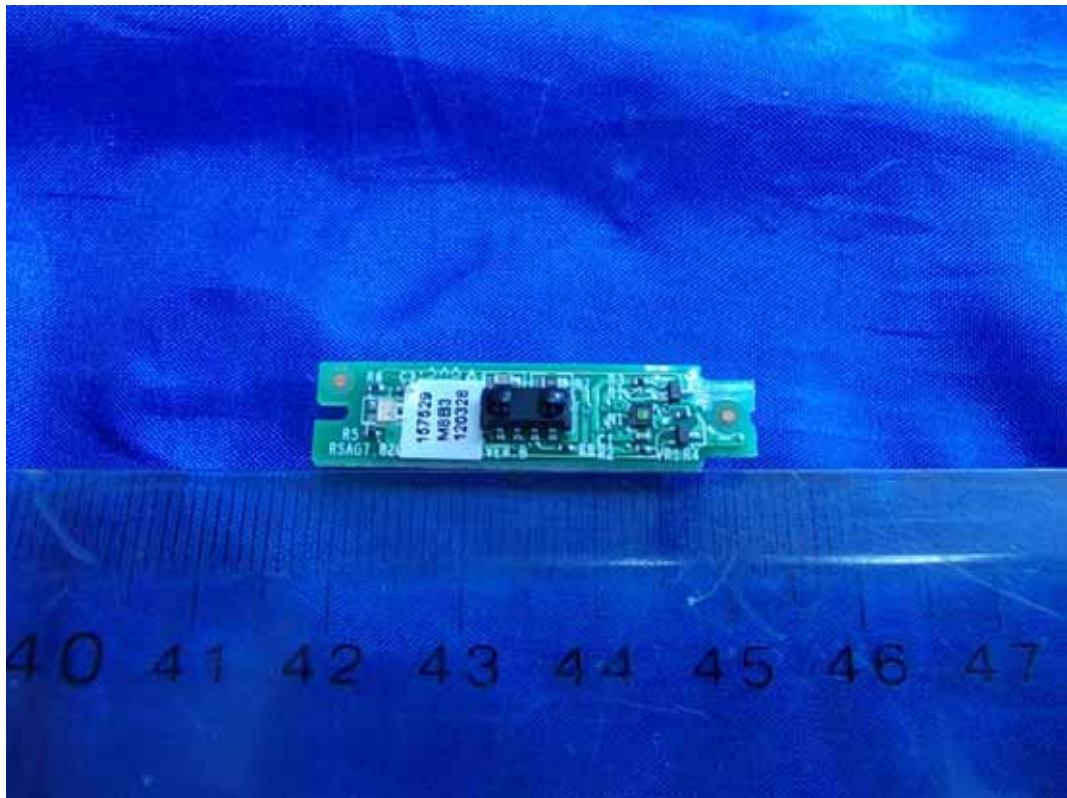


FIGURE 15
LED LCD TV (M/N: LTDN50K316XWUS3D)
IR BOARD (SOLDERED SIDE)



FIGURE 16
LED LCD TV (M/N: LTDN50K316XWUS3D)
RF BOARD (COMPONENT SIDE)

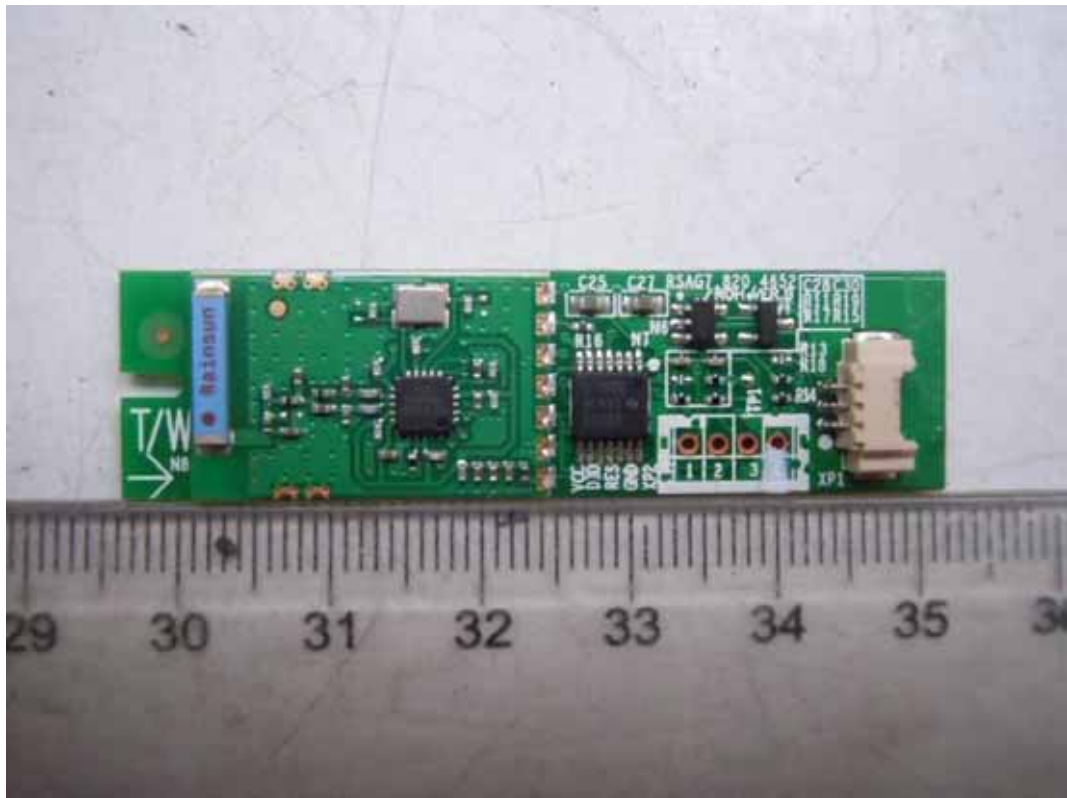


FIGURE 17
LED LCD TV (M/N: LTDN50K316XWUS3D)
RF BOARD (SOLDERED SIDE)

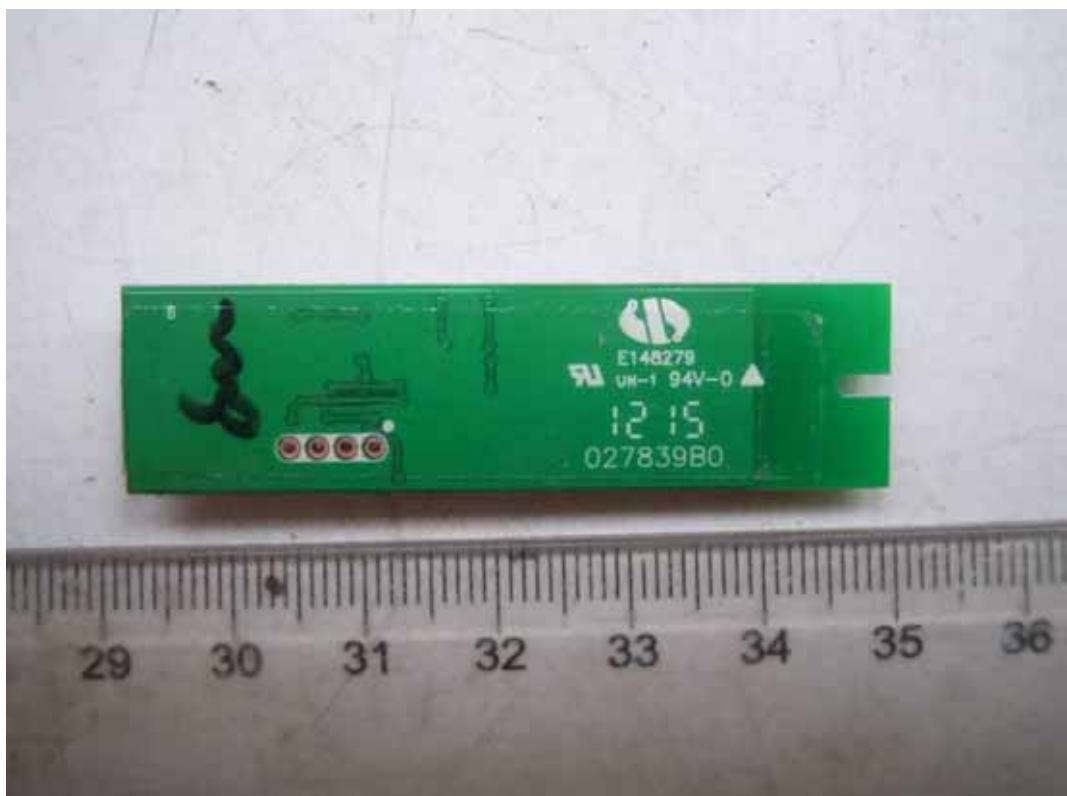


FIGURE 18
LED LCD TV (M/N: LTDN50K316XWUS3D)
CHIP & CRYSTAL ON RF BOARD

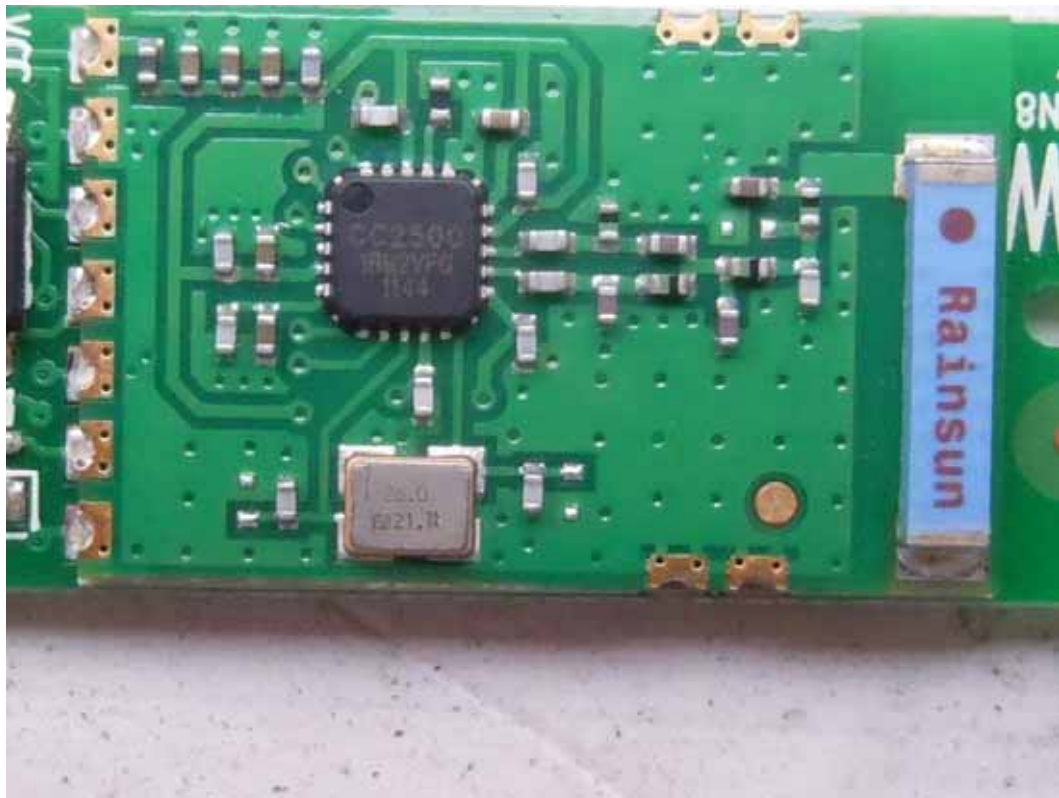


FIGURE 19
LED LCD TV (M/N: LTDN50K316XWUS3D)
LCD PANEL CONTROL BOARD (COMPONENT SIDE)



FIGURE 20
LED LCD TV (M/N: LTDN50K316XWUS3D)
LCD PANEL CONTROL BOARD (SOLDERED SIDE)

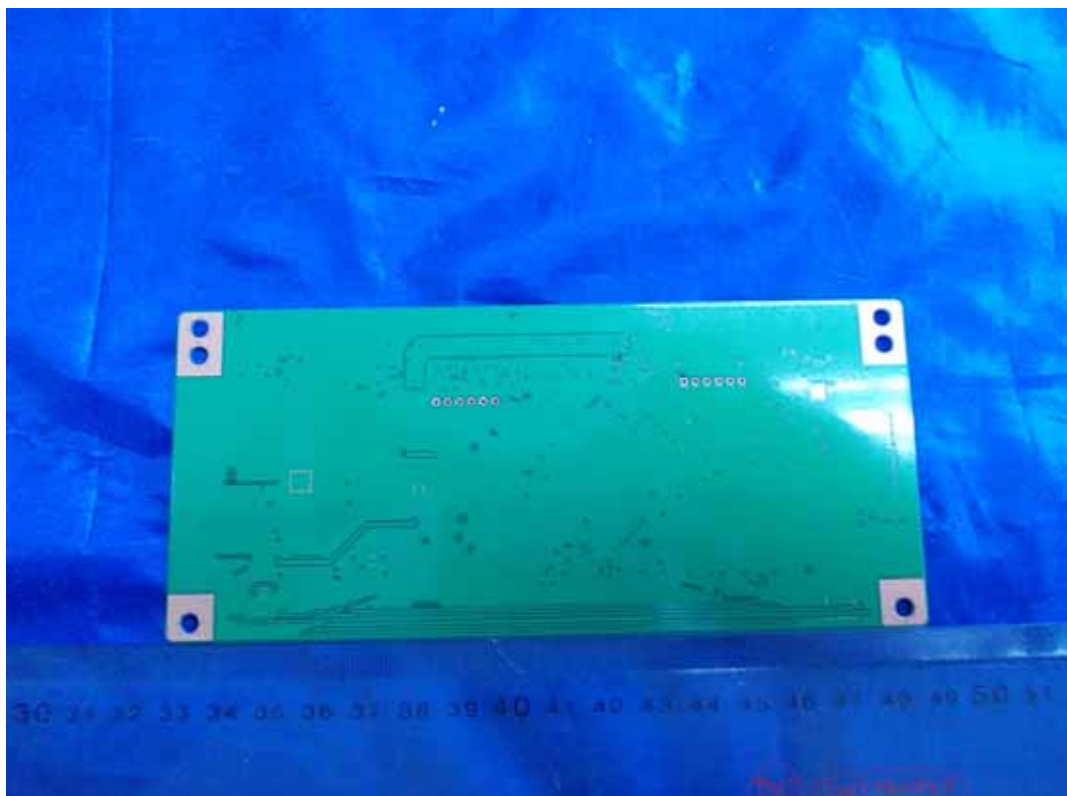


FIGURE 21
LED LCD TV (M/N: LTDN50K316XWUS3D)
HIGH VOLTAGE SIGNAL BOARD (COMPONENT SIDE)



FIGURE 22
LED LCD TV (M/N: LTDN50K316XWUS3D)
HIGH VOLTAGE SIGNAL BOARD (SOLDERED SIDE)

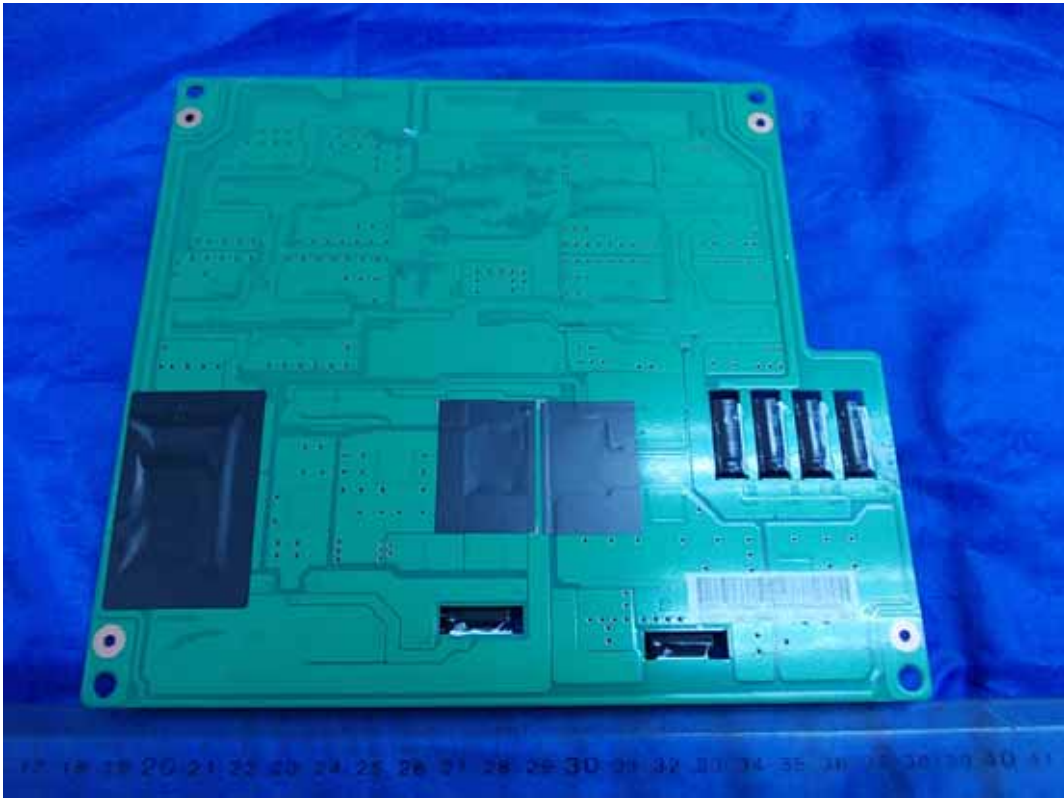


FIGURE 23
LED LCD TV (M/N: LTDN50K316XWUS3D)
DEBUG 1



FIGURE 24
LED LCD TV (M/N: LTDN50K316XWUS3D)
DEBUG 2

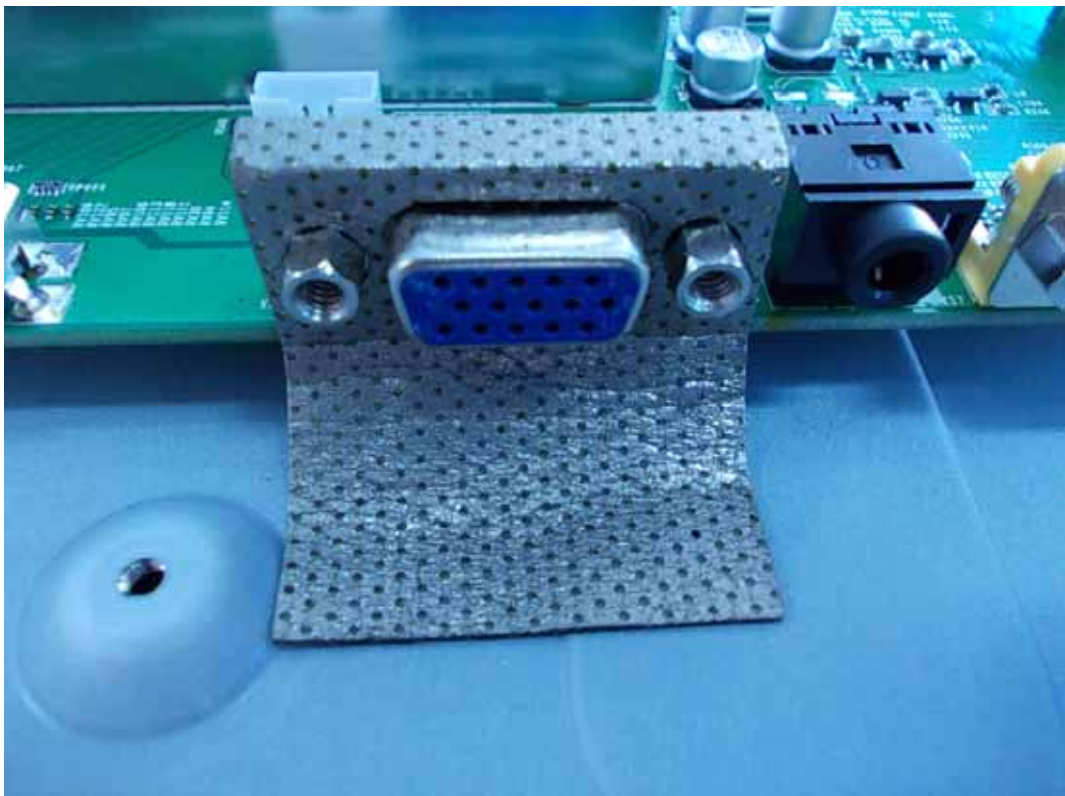


FIGURE 25
LED LCD TV (M/N: LTDN50K316XWUS3D)
DEBUG 3

