

FIGURE 1
LED LCD TV (M/N: LTDN55XT770XWUS3D)
COVER REMOVED



FIGURE 2
LED LCD TV (M/N: LTDN55XT770XWUS3D)
PANEL LABEL



FIGURE 3
LED LCD TV (M/N: LTDN55XT770XWUS3D)
POWER BOARD (COMPONENT SIDE)



FIGURE 4
LED LCD TV (M/N: LTDN55XT770XWUS3D)
POWER BOARD (SOLDERED SIDE)



FIGURE 5
LED LCD TV (M/N: LTDN55XT770XWUS3D)
MAIN BOARD (COMPONENT SIDE)



FIGURE 6
LED LCD TV (M/N: LTDN55XT770XWUS3D)
MAIN BOARD (SOLDERED SIDE)

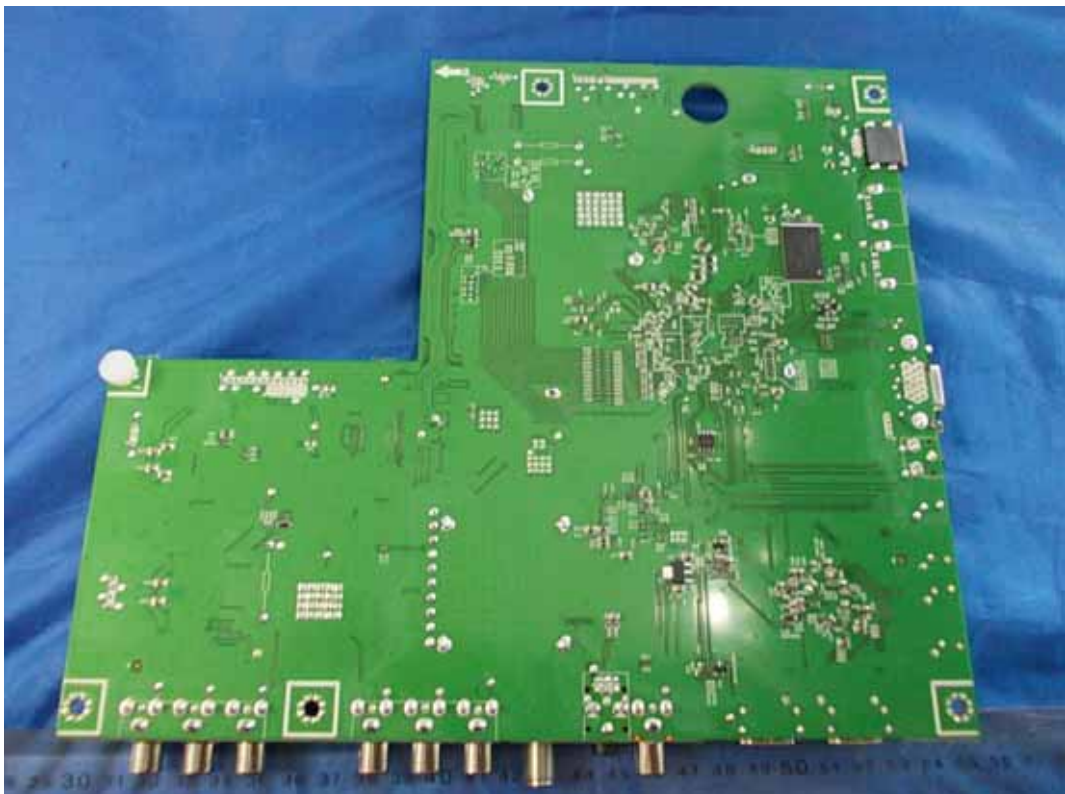


FIGURE 7
LED LCD TV (M/N: LTDN55XT770XWUS3D)
TUNER ON MAIN BOARD



FIGURE 8
LED LCD TV (M/N: LTDN55XT770XWUS3D)
CHIP #1 & CRYSTAL #1 ON MAIN BOARD



FIGURE 9
LED LCD TV (M/N: LTDN55XT770XWUS3D)
CHIP #2 & CRYSTAL #2 ON MAIN BOARD



FIGURE 10
LED LCD TV (M/N: LTDN55XT770XWUS3D)
CRYSTAL #3 ON MAIN BOARD

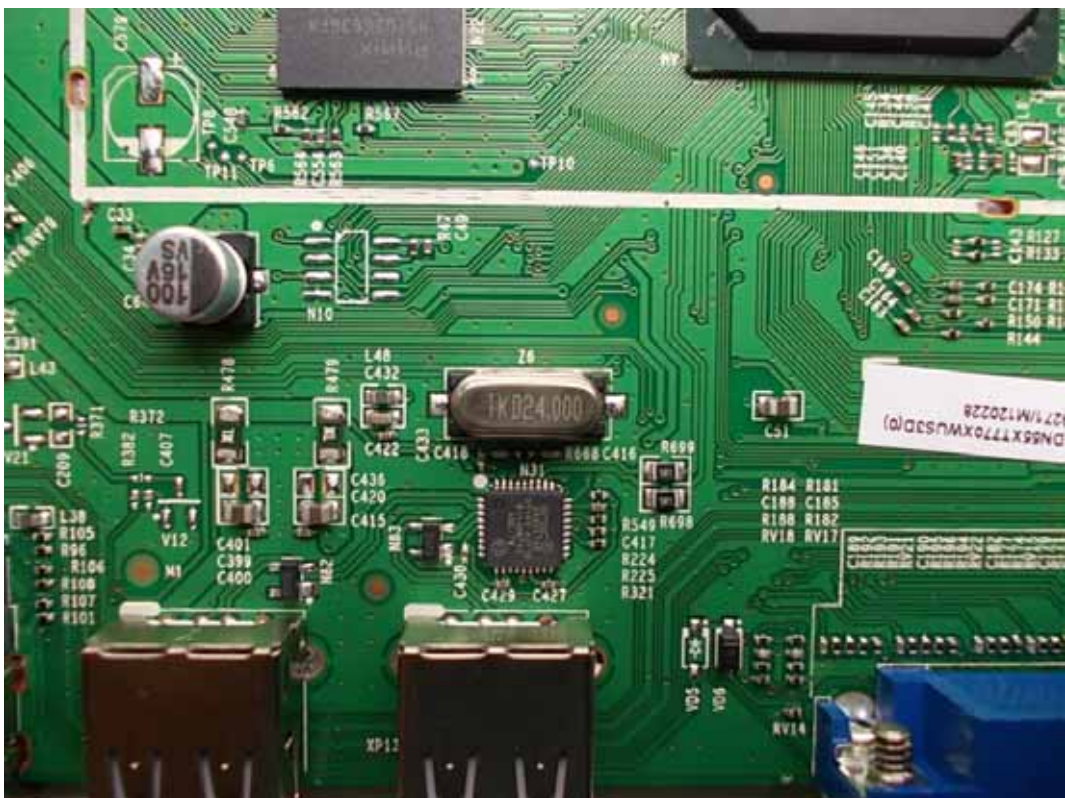


FIGURE 11
LED LCD TV (M/N: LTDN55XT770XWUS3D)
RF BOARD



FIGURE 12
LED LCD TV (M/N: LTDN55XT770XWUS3D)
KEY BOARD (COMPONENT SIDE)



FIGURE 13
LED LCD TV (M/N: LTDN55XT770XWUS3D)
KEY BOARD (SOLDERED SIDE)



FIGURE 14
LED LCD TV (M/N: LTDN55XT770XWUS3D)
LCD PANEL CONTROL BOARD (COMPONENT SIDE)



FIGURE 15
LED LCD TV (M/N: LTDN55XT770XWUS3D)
LCD PANEL CONTROL BOARD (SOLDERED SIDE)

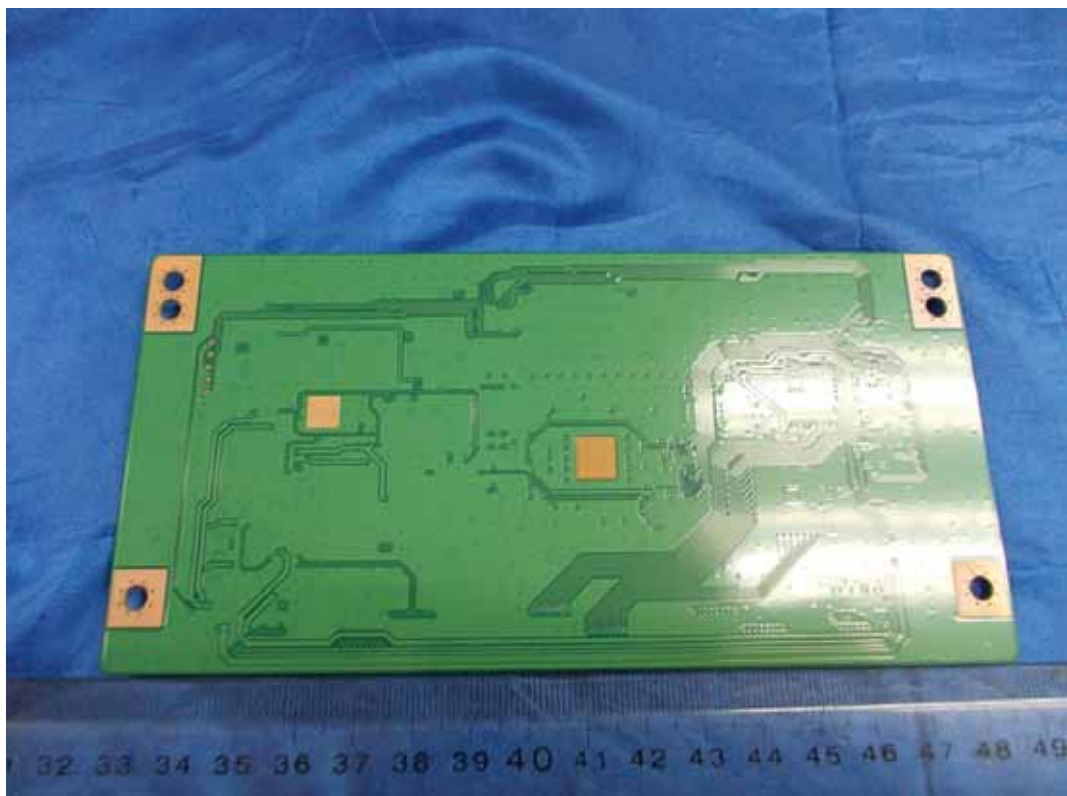


FIGURE 16
LED LCD TV (M/N: LTDN55XT770XWUS3D)
DEBUG 1

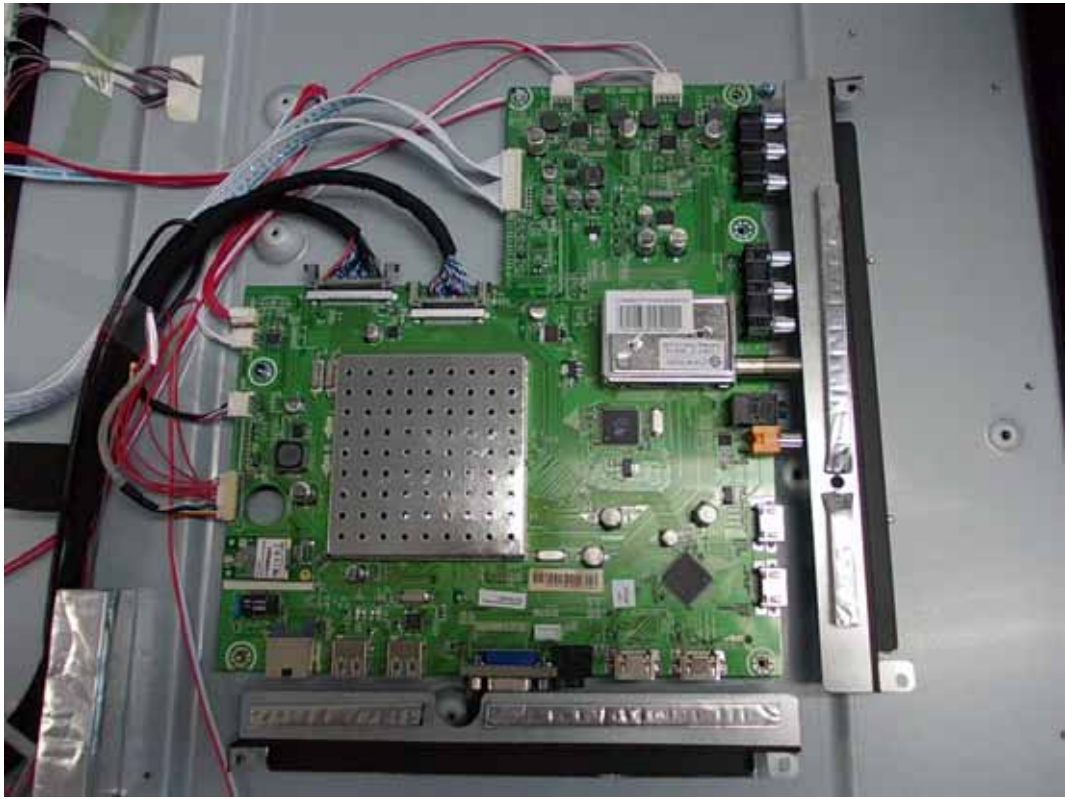


FIGURE 17
LED LCD TV (M/N: LTDN55XT770XWUS3D)
DEBUG 2



FIGURE 18
LED LCD TV (M/N: LTDN55XT770XWUS3D)
DEBUG 3

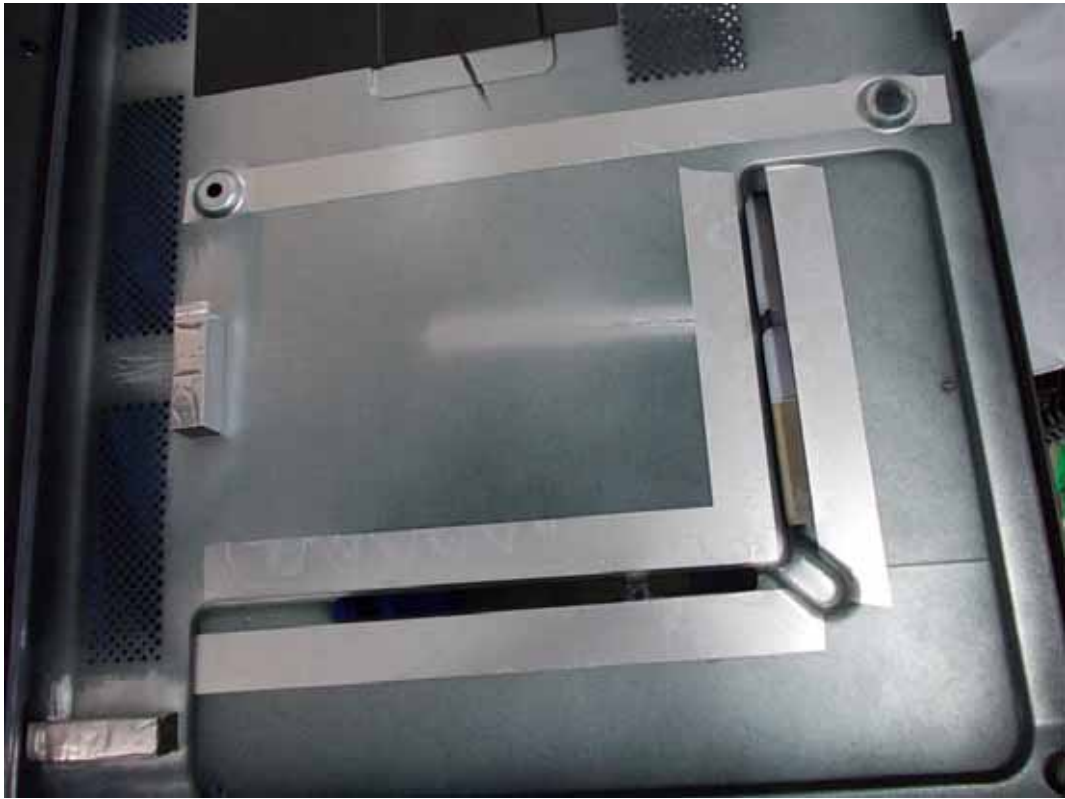


FIGURE 19
LED LCD TV (M/N: LTDN55XT770XWUS3D)
DEBUG 4

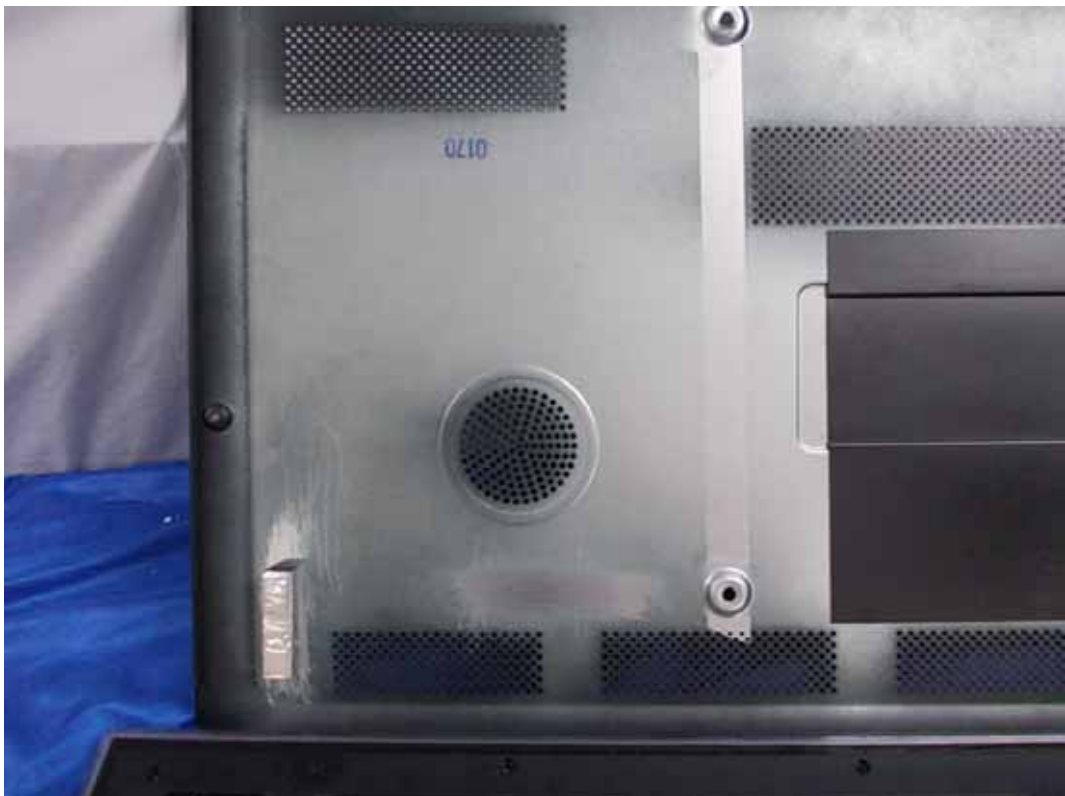


FIGURE 20
LED LCD TV (M/N: LTDN55XT770XWUS3D)
DEBUG 5

